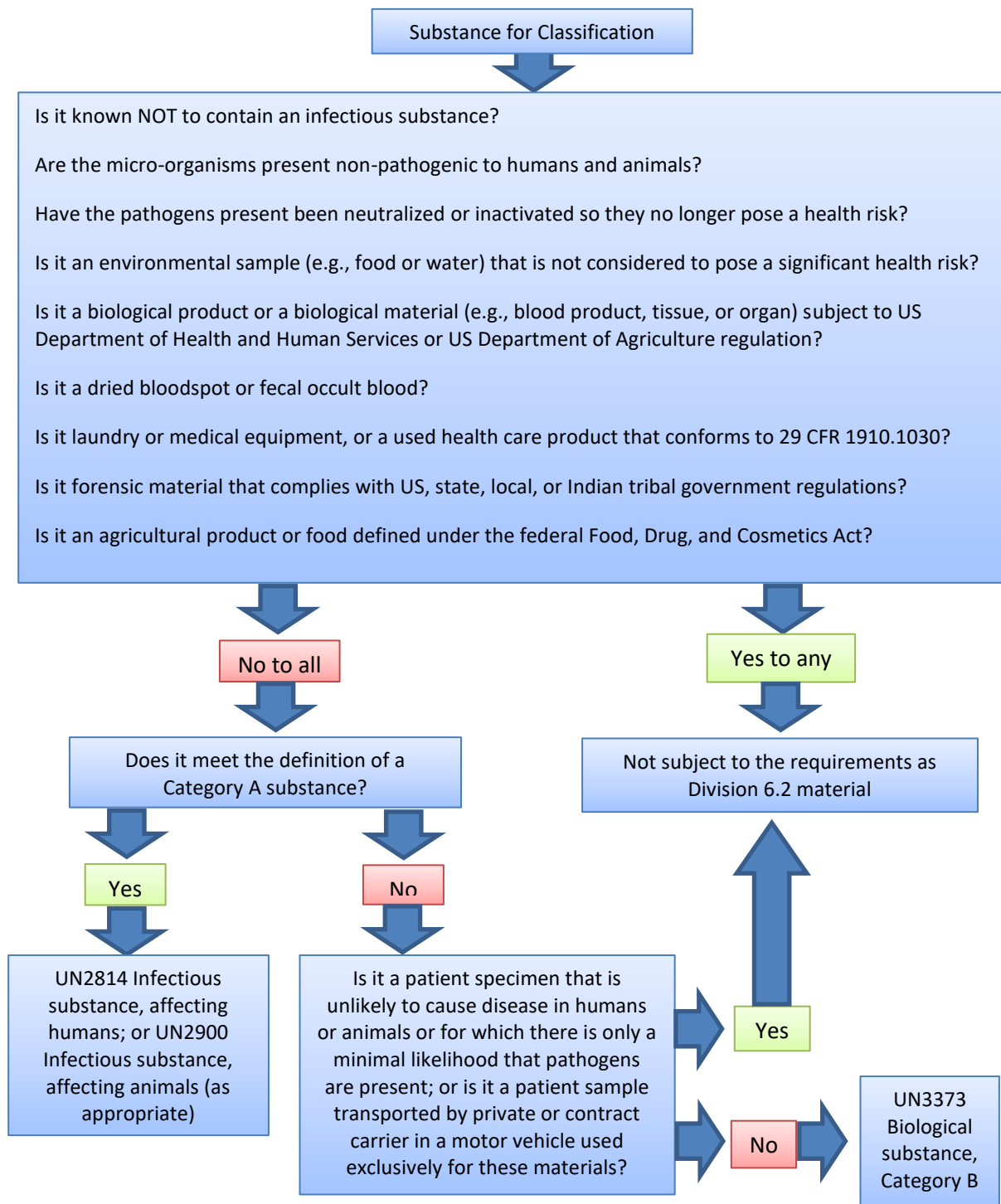


## Step 2: DOT Job Aid

Use the decision tree below to help you classify your substance if shipping by motor vehicle courier/ground in accordance with Hazardous Materials Regulations (HMR). Use the IATA job aid for packages sent by air.



## DOT Category A Indicative List

The following list is not exhaustive. Infectious substances, including new or emerging pathogens, which do not appear in the list, but which meet the same criteria, must be assigned to Category A. In addition, if there is doubt as to whether a substance meets the criteria it must be included in Category A.

### **UN2814 Infectious substance, affecting humans**

*Bacillus anthracis (cultures only)*  
*Brucella abortus (cultures only)*  
*Brucella melitensis (cultures only)*  
*Brucella suis (cultures only)*  
*Burkholderia mallei – Pseudomonas mallei – Glanders (cultures only)*  
*Burkholderia pseudomallei – Pseudomonas pseudomallei (cultures only)*  
*Chlamydia psittaci – avian strains (cultures only)*  
*Clostridium botulinum (cultures only)*  
*Coccidioides immitis (cultures only)*  
*Coxiella burnetii (cultures only)*  
*Crimean-Congo hemorrhagic fever virus*  
*Dengue virus (cultures only)*  
*Eastern equine encephalitis virus (cultures only)*  
*Escherichia coli, verotoxigenic (cultures only)*  
*Ebola virus*  
*Flexal virus*  
*Francisella tularensis (cultures only)*  
*Guanarito virus*  
*Hantaan virus*  
*Hantavirus causing hemorrhagic fever with renal syndrome*  
*Hendra virus*  
*Herpes B virus (cultures only)*  
*Human immunodeficiency virus (cultures only)*  
*Highly pathogenic avian influenza virus (cultures only)*  
*Japanese Encephalitis virus (cultures only)*  
*Junin virus*  
*Kyasanur Forest disease virus*  
*Lassa virus*  
*Machupo virus*  
*Marburg virus*

*Mpox virus*  
*Mycobacterium tuberculosis (cultures only)*  
*Nipah virus*  
*Omsk hemorrhagic fever virus*  
*Poliovirus (cultures only)*  
*Rabies and other lyssaviruses (cultures only)*  
*Rickettsia prowazekii (cultures only)*  
*Rickettsia rickettsii (cultures only)*  
*Rift Valley fever virus (cultures only)*  
*Russian spring-summer encephalitis virus (cultures only)*  
*Sabia virus*  
*Shigella dysenteriae type 1 (cultures only)*  
*Tick-borne encephalitis virus (cultures only)*  
*Variola virus*  
*Venezuelan equine encephalitis virus (cultures only)*  
*Vesicular stomatitis virus (cultures only)*  
*West Nile virus (cultures only)*  
*Yellow fever virus (cultures only)*  
*Yersinia pestis (cultures only)*

### **UN2900 Infectious substance, affecting animals**

*African swine fever virus (cultures only)*  
*Avian paramyxovirus Type 1 – Velogenic Newcastle disease virus (cultures only)*  
*Classical swine fever virus (cultures only)*  
*Foot and mouth disease virus (cultures only)*  
*Lumpy skin disease virus (cultures only)*  
*Mycoplasma mycoides – Contagious bovine pleuropneumonia (cultures only)*  
*Peste des petits ruminant's virus (cultures only)*  
*Rinderpest virus (cultures only)*  
*Sheep-pox virus (cultures only)*  
*Goatpox virus (cultures only)*  
*Swine vesicular disease virus (cultures only)*

This job aid is a component of the free, on-demand CDC training course “Packing and Shipping Dangerous Goods: What the Laboratory Staff Must Know.” Find the course at <https://www.cdc.gov/labtraining>.