



# *Francisella tularensis*

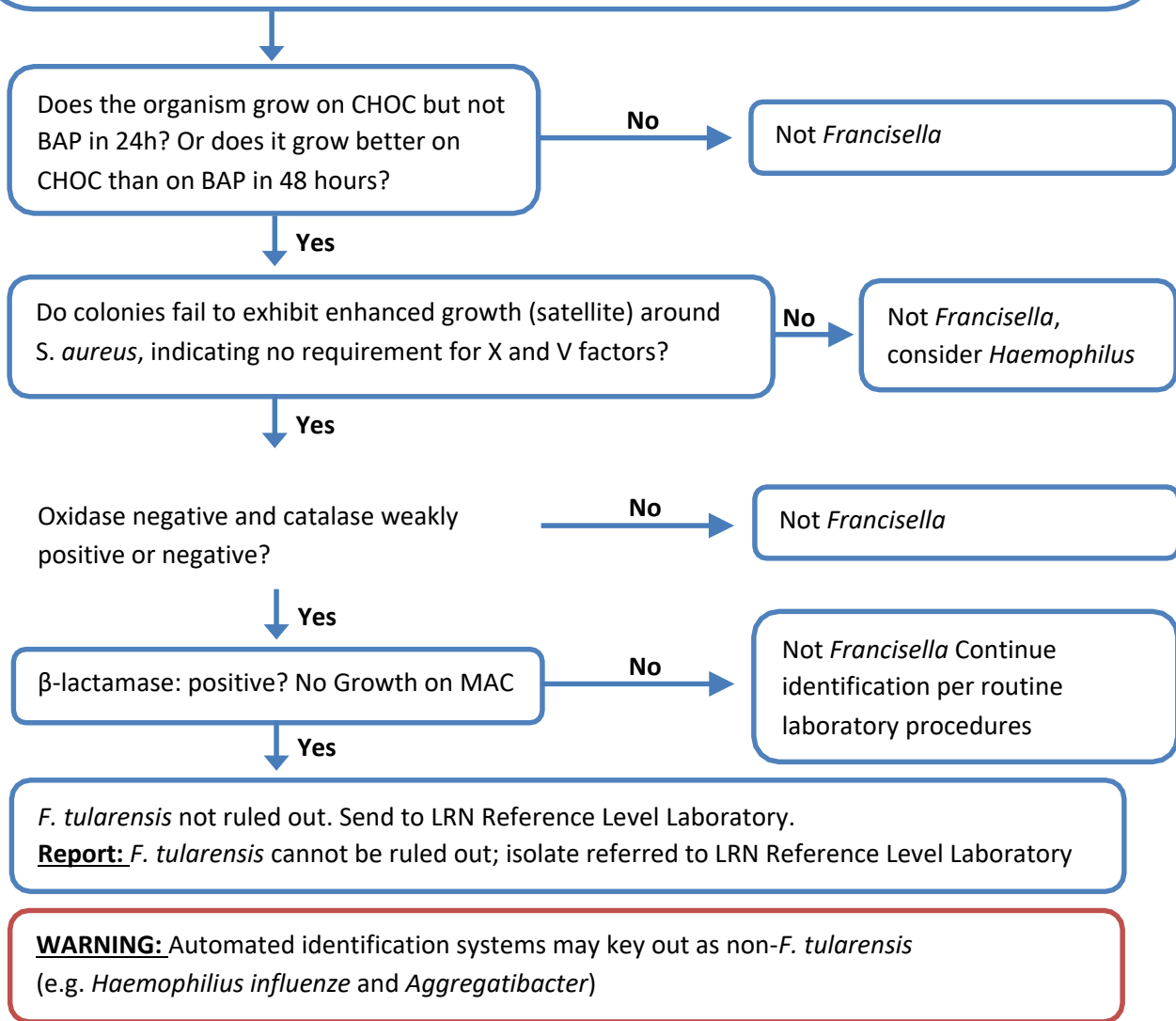
## Identification Flowchart

### Major characteristics of *Francisella tularensis*

**Gram stain morphology:** Aerobic, pleomorphic, minute (0.2 to 0.5 by 0.7 to 1.0  $\mu\text{m}$ ) faintly staining, Gram-negative coccobacillus

**Colony morphology:** No growth on MAC, scant to no growth on BAP after >48 h. Produces 1-2 mm gray to grayish-white colonies on CHOC after >48 h.

Perform all work in a biosafety cabinet using BSL-3 precautions.



**Note:** Biochemical test procedures and quality control instructions can be found at the end of the General Recommendation and Biochemical Testing Procedures document.

This job aid is a component of the free, on-demand CDC training course "*Francisella tularensis*." Find the course at <https://www.cdc.gov/labtraining>.