

Beta-Hemolytic Streptococci on BAP Identification Chart

Summary

1. Major pathogens: *Streptococcus pyogenes* (group A) & *S. agalactiae* (group B). In abscesses and body fluids, *S. anginosus* group ("*S. milleri*") also found. All are catalase (-), Gram (+) cocci chains

Group A - *S. pyogenes*

Characteristics

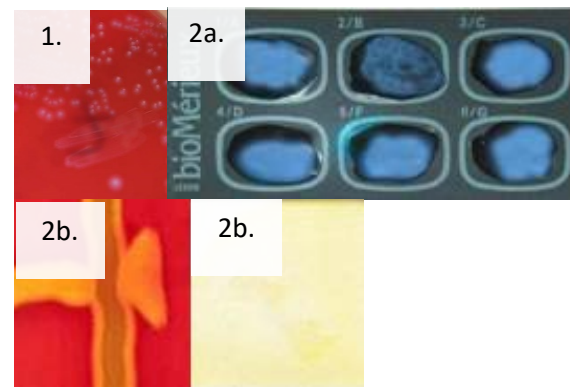
1. Colony Morphology and beta-hemolysis around colony
2. a- Group A positive Latex or b- PYR (+)



Group B - *S. agalactiae*

Characteristics

1. Colony Morphology and soft beta-hemolysis under colony
2. a- Group B positive Latex or b- CAMP (+) and PYR (-)



S. anginosus group

Characteristics

1. Pinpoint colonies <0.5 mm; Caramel odor (noted but do not sniff plates)
"*S. anginosus*" group



Note: If none of the above: Beta-strep not A or B