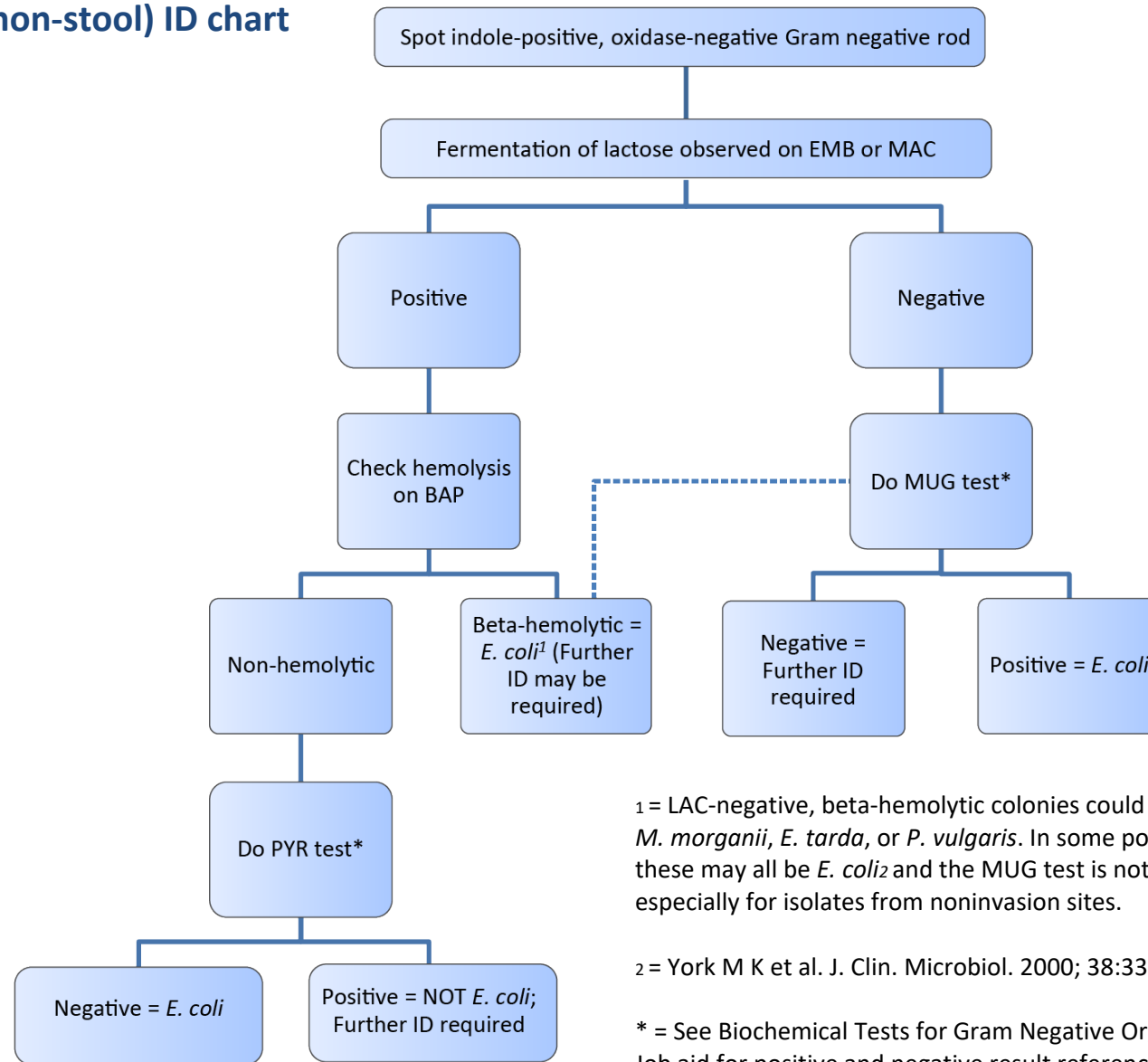




### Escherichia coli (non-stool) ID chart



<sup>1</sup> = LAC-negative, beta-hemolytic colonies could be *M. morgani*, *E. tarda*, or *P. vulgaris*. In some populations, these may all be *E. coli*<sup>2</sup> and the MUG test is not needed, especially for isolates from noninvasion sites.

<sup>2</sup> = York M K et al. J. Clin. Microbiol. 2000; 38:3394-3398

\* = See Biochemical Tests for Gram Negative Organism ID Job aid for positive and negative result reference.