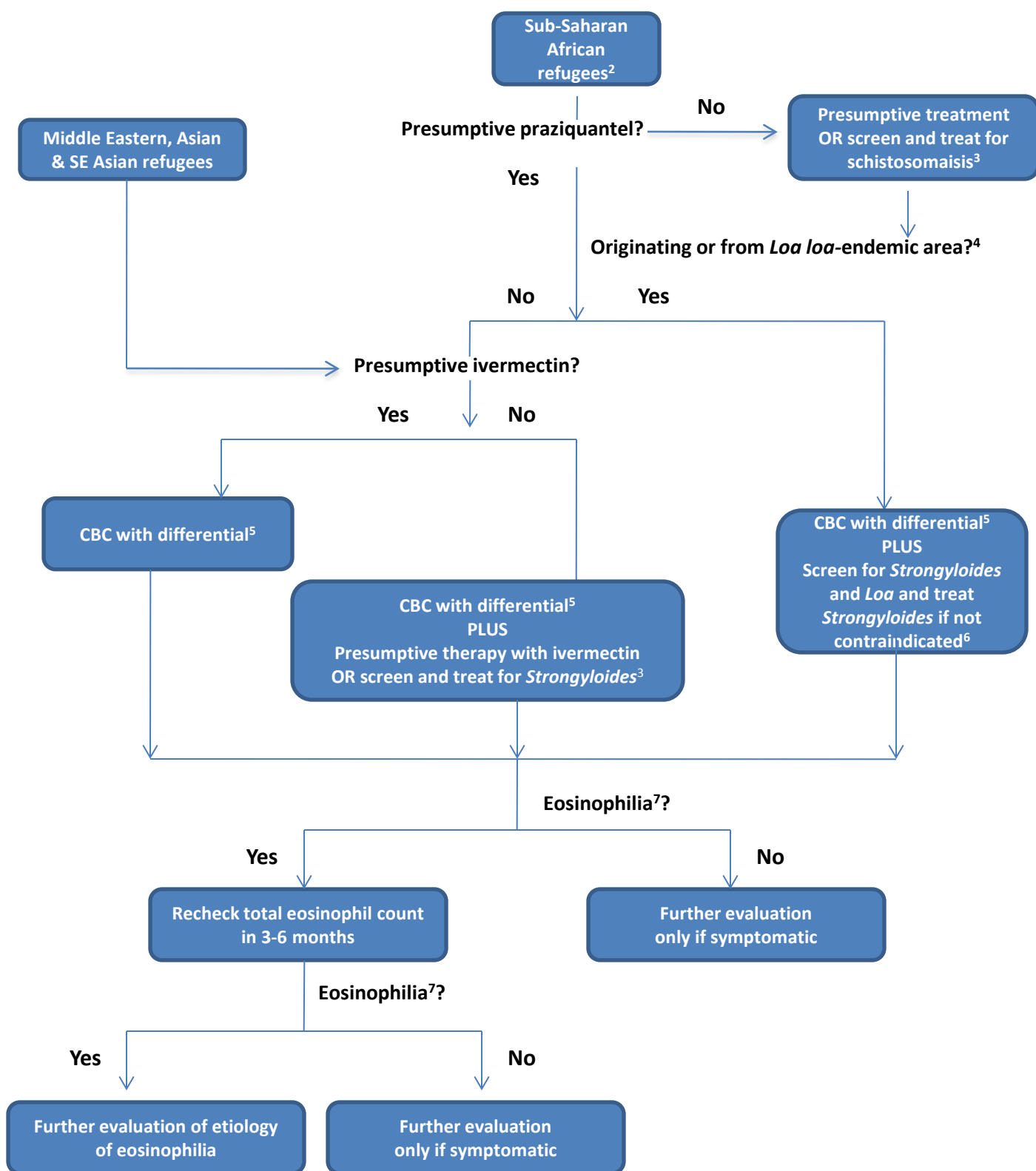


Figure 2. Management of parasitic infections for refugee population currently receiving parasitic predeparture presumptive albendazole but incomplete predeparture therapy as of March 1, 2013¹



¹Most refugees without a contraindication are currently receiving pre-departure albendazole. Visit the CDC's [current immunization schedule for US-bound refugees](#) for current status of pre-departure presumptive treatment.

²Sub-Saharan African refugees without a contraindication are currently receiving pre-departure praziquantel for schistosomiasis. (Consider serologic screening for those with a contraindication at departure; see Figure 2.)

³See text for screening strategies

⁴See list 1 of overseas guidelines and map of *Loa loa*-endemic countries.

⁵CBC: Complete blood count and differential (not recommended as screening test for parasitic infection but routinely obtained for new arrival screening)

⁶See text for discussion of screening for *Loa loa*

⁷Eosinophilia = an eosinophil count of >400 μ L.