

HIV Incidence and Prevalence Report*

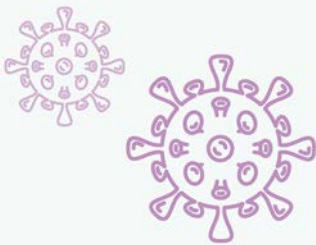


The CDC can determine the **burden of HIV** in the U.S. by using **three different measures**.

HIV Incidence in 2016

38,700**

The estimated number of **new HIV infections** in a year



HIV Prevalence in 2016

1.1 M**

The estimated number of all people with **diagnosed or undiagnosed** HIV infections at a point in time



1 in 7
did not
know they
were infected

HIV Diagnoses[†] in 2017

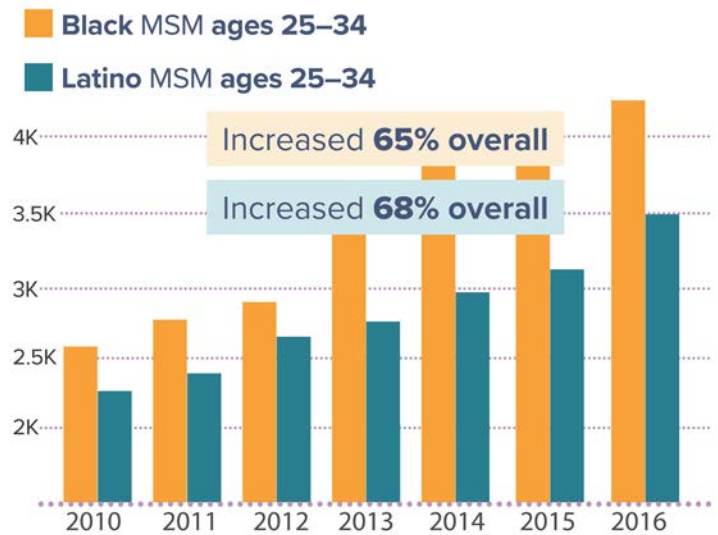
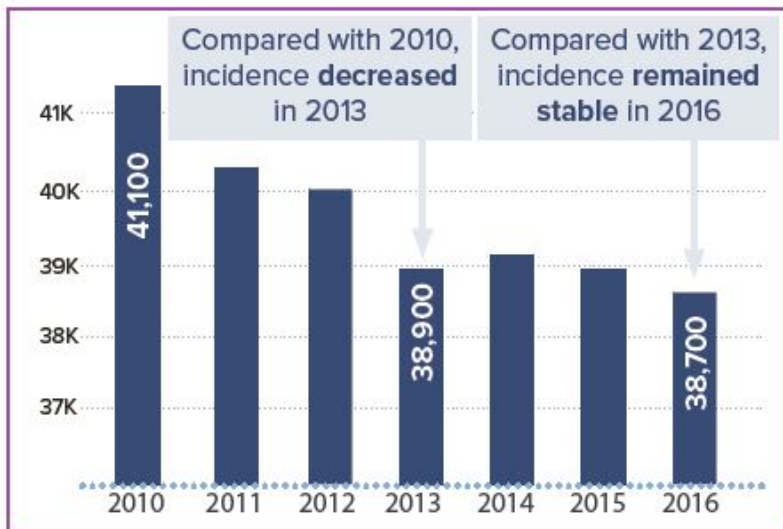
38,739***

The number of **HIV diagnoses** reported for a year



** U.S. only ***U.S. and 6 dependent areas † <https://www.cdc.gov/hiv/pdf/library/reports/surveillance/cdc-hiv-surveillance-report-2017-vol-29.pdf>

Annual New Infections (Incidence) 2010-2016



Men who have Sex with Men (MSM) represented 68% of new infections in 2016

White MSM

down
16%

Black/African American MSM

stable

Hispanic/Latino MSM

up
30%

National Center for HIV/AIDS, Viral Hepatitis, STD, and TB Prevention
Division of HIV/AIDS Prevention



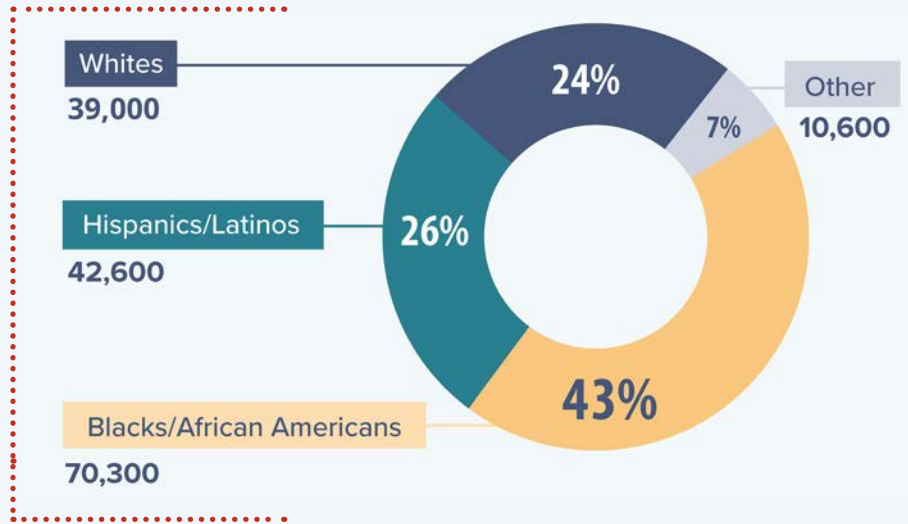
* Centers for Disease Control and Prevention. Estimated HIV incidence and prevalence in the United States, 2010-2016. HIV Surveillance Supplemental Report 2019;24(No. 1). <http://www.cdc.gov/hiv/library/reports/hiv-surveillance.html>. Published February 2019.

Persons with HIV (Prevalence)

In 2016, **only 86%** of people with HIV had a **diagnosed infection**

162,500 people still **did not know** they were infected

Undiagnosed HIV Infections



Persons Who Inject Drugs (PWID)

5% of HIV infections in the U.S. are among **PWID**

Infections **decreased by 34%** among **all women** with an infection attributed to injection drug use 2010–2016

Opioid Crisis



While HIV infections from injection drug use have **steadily declined**, the **nation's opioid crisis threatens this progress.**

The South

In 2016:

51% of **annual** HIV infections

45% of **persons living with** HIV infections

50% of **undiagnosed** HIV infections

Southern states account for **38%** of the US population but bear the highest burden of HIV infection