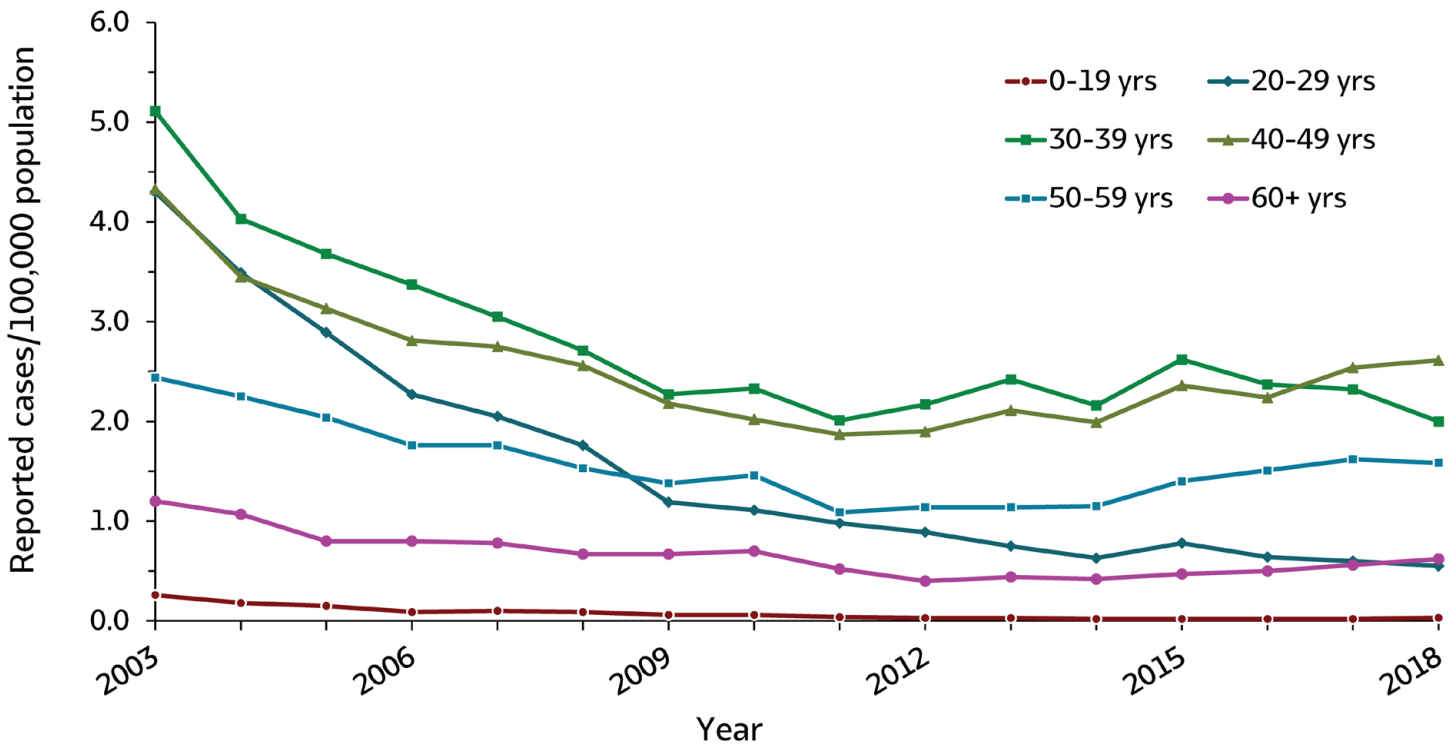


Figure 2.4. Rates of reported acute hepatitis B, by age group — United States, 2003–2018



Age (years)	2003	2004	2005	2006	2007	2008	2009	2010	2011	2012	2013	2014	2015	2016	2017	2018
0-19	0.3	0.2	0.2	0.1	0.1	0.1	0.1	0.1	0.0	0.0	0.0	0.0	0.0	0.0	0.0	0.0
20-29	4.3	3.5	2.9	2.3	2.1	1.8	1.2	1.1	1.0	0.9	0.8	0.6	0.8	0.6	0.6	0.6
30-39	5.1	4.0	3.7	3.4	3.1	2.7	2.3	2.3	2.0	2.2	2.4	2.2	2.6	2.4	2.3	2.0
40-49	4.3	3.5	3.1	2.8	2.8	2.6	2.2	2.0	1.9	1.9	2.1	2.0	2.4	2.2	2.5	2.6
50-59	2.4	2.3	2.0	1.8	1.8	1.5	1.4	1.5	1.1	1.1	1.1	1.2	1.4	1.5	1.6	1.6
60+	1.2	1.1	0.8	0.8	0.8	0.7	0.7	0.7	0.5	0.4	0.4	0.4	0.5	0.5	0.6	0.6

Source: CDC, National Notifiable Diseases Surveillance System.