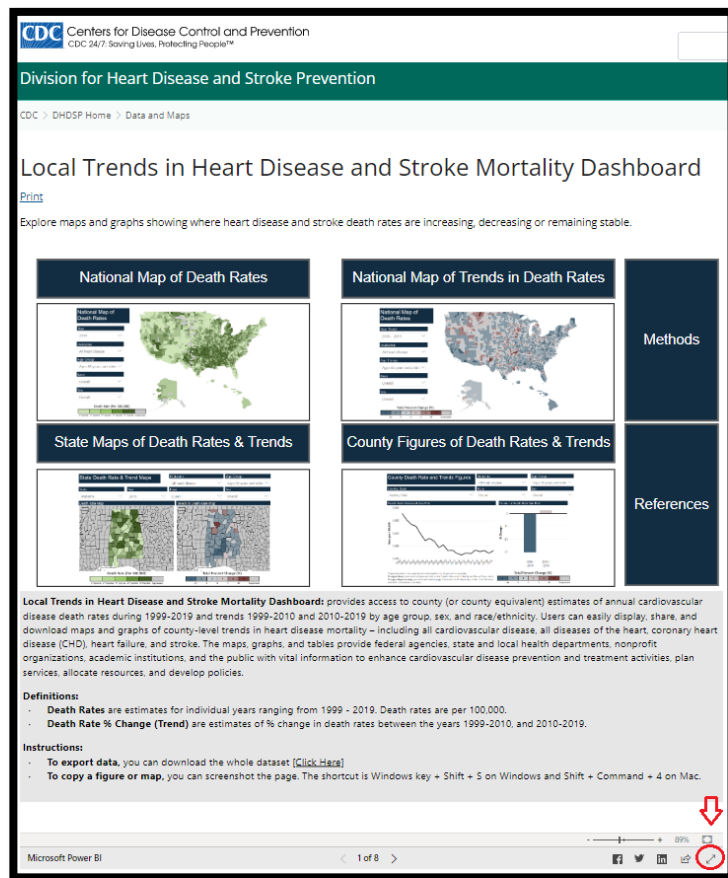


# How to View County-Specific Figures of Trends in Heart Disease and Stroke Death Rates

## Step 1: Open the Local Trends in Heart Disease and Stroke Mortality Dashboard

<https://www.cdc.gov/dhdsp/maps/hd-stroke-mortality-dashboard.htm>

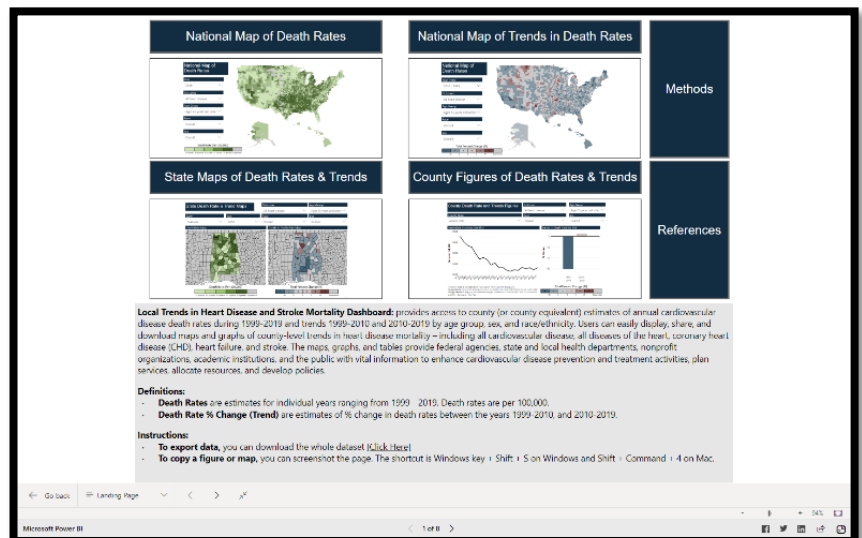


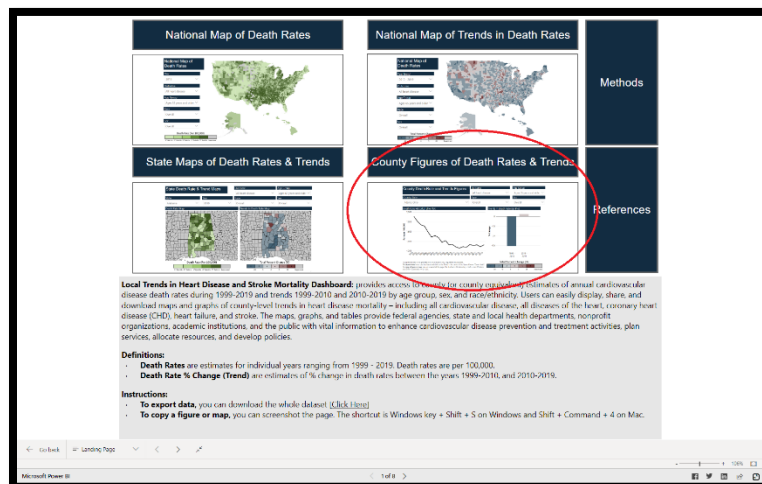
## Step 2:

Click on the expand tool on the bottom right corner of the screen to open the dashboard in full-screen mode.

Note: This step is optional; it will make it easier to navigate within the Dashboard.

Full Screen Mode





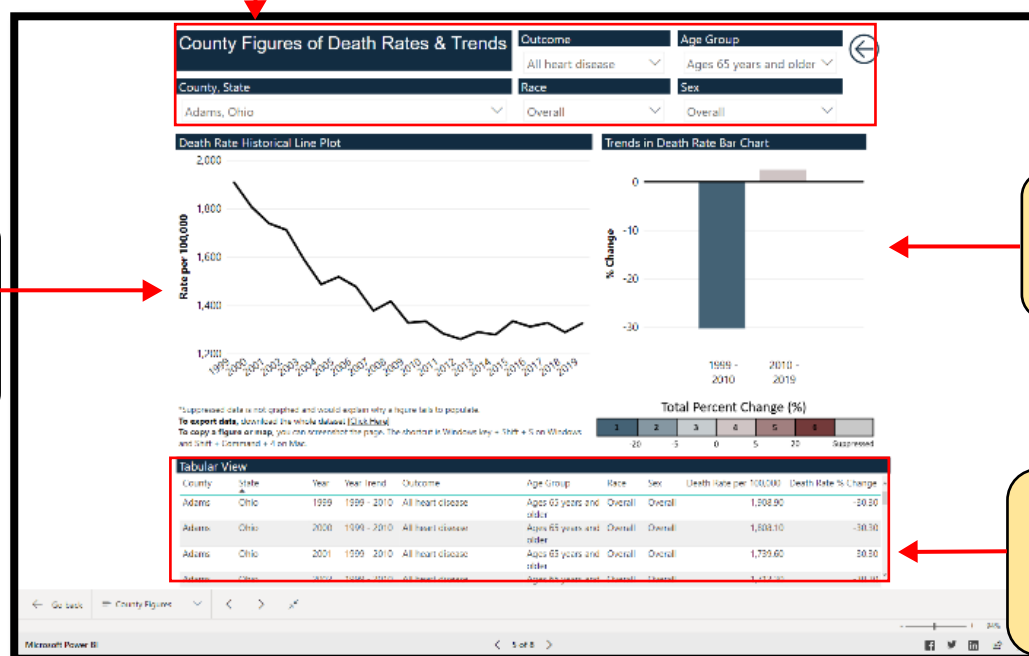
**Step 3:** Click on the County Figures of Death Rates and Trends located on the bottom right quadrant.

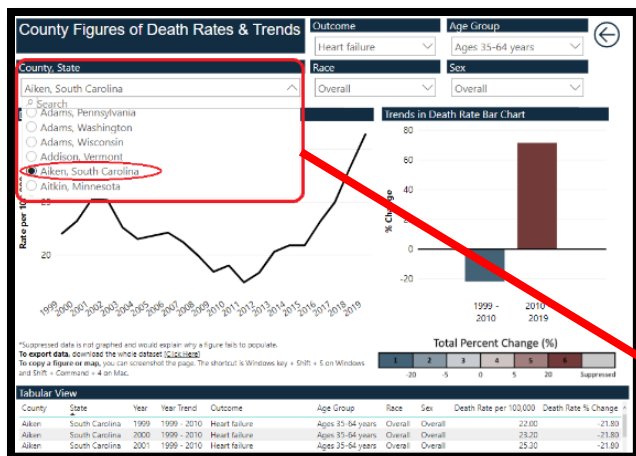
Panel for selecting the county, state, outcome, racial/ethnic group, age group, and sex

Line Plot of Historical Death Rates

Bar Chart of Trends in Death Rates

Table of Death Rates and Trends by County



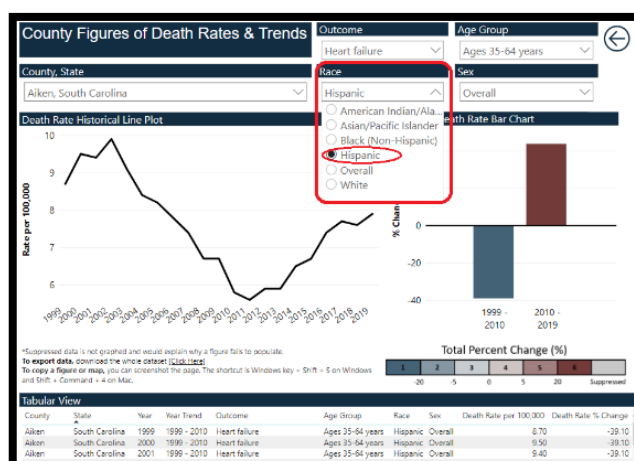
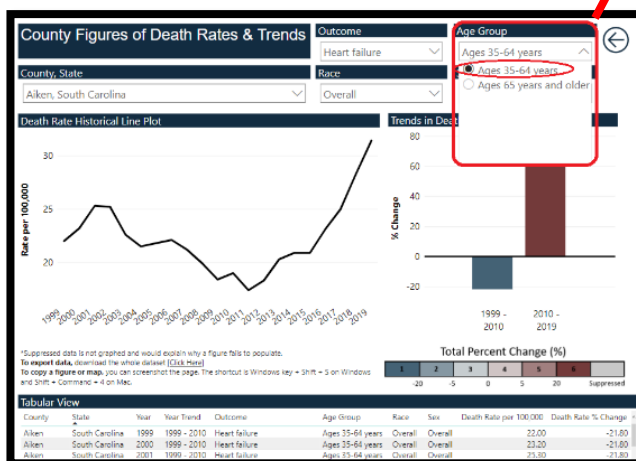
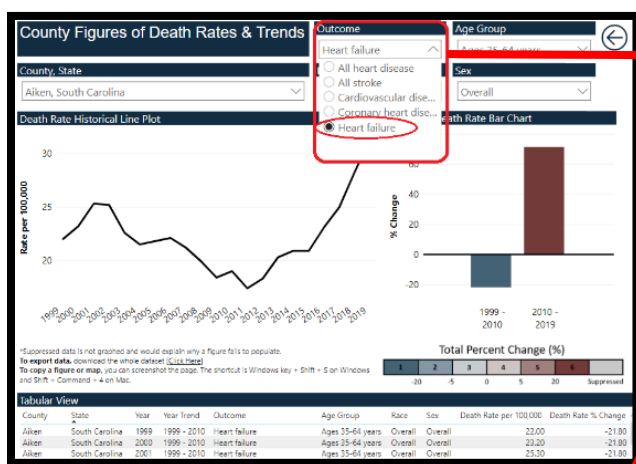


**Step 4:** Use the drop-down menu to choose specific data. The trends figure will change each time a selection is made.

In this example, the following options have been selected:

- **County/State:** Aiken, South Carolina (You may search for your county of interest by using the search feature under **County, State**)
- **Outcome:** Heart failure
- **Age Group:** Ages 35-64 years
- **Race:** Hispanic
- **Sex:** Overall

Once selected you should see your Map Trend!

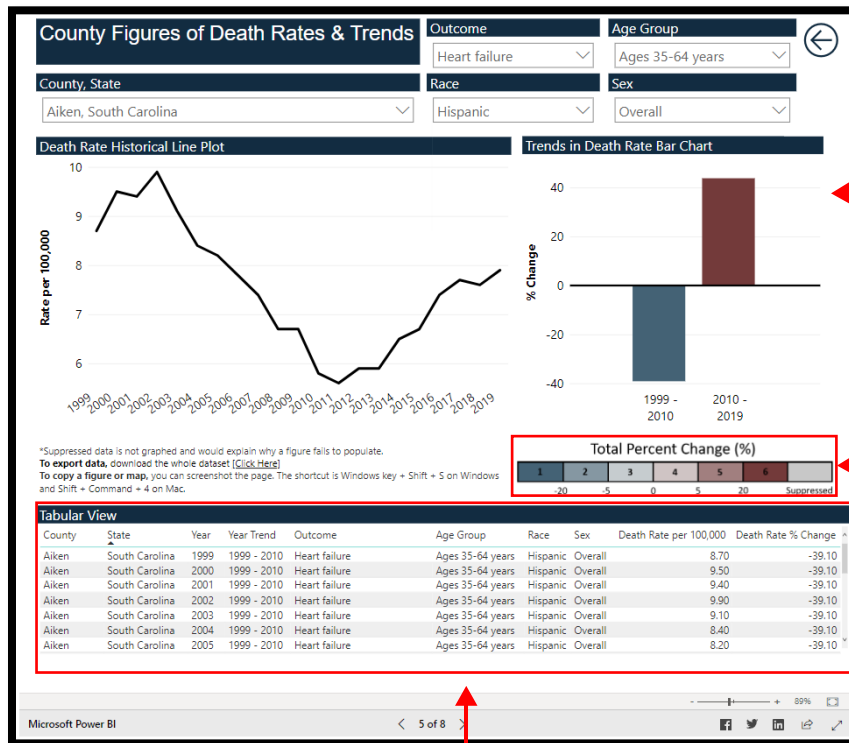


## Note\*

There are some instances for which the data are not available by race/ethnicity or sex. This happens when the population sizes are too small to calculate statistically stable death rates.

**INFO:** Here are descriptions of the data displayed on the Dashboard.

**Line Chart:**  
Depicts the trend in annual death rates in the county from 1999 to 2019.



**Bar Chart:** Depicts the percent change in death rates for two time periods: 1999–2010 and 2010–2019.

**Bar Chart Legend:** Indicates the magnitude of percent change, ranging from a decrease of more than 20% to an increase of more than 20%. The numbers in the boxes (i.e., 1–5) are labels.

The table includes all the data displayed in the figures above. You can export the table by following the Instruction for [How to Preview and Export Tables](#).