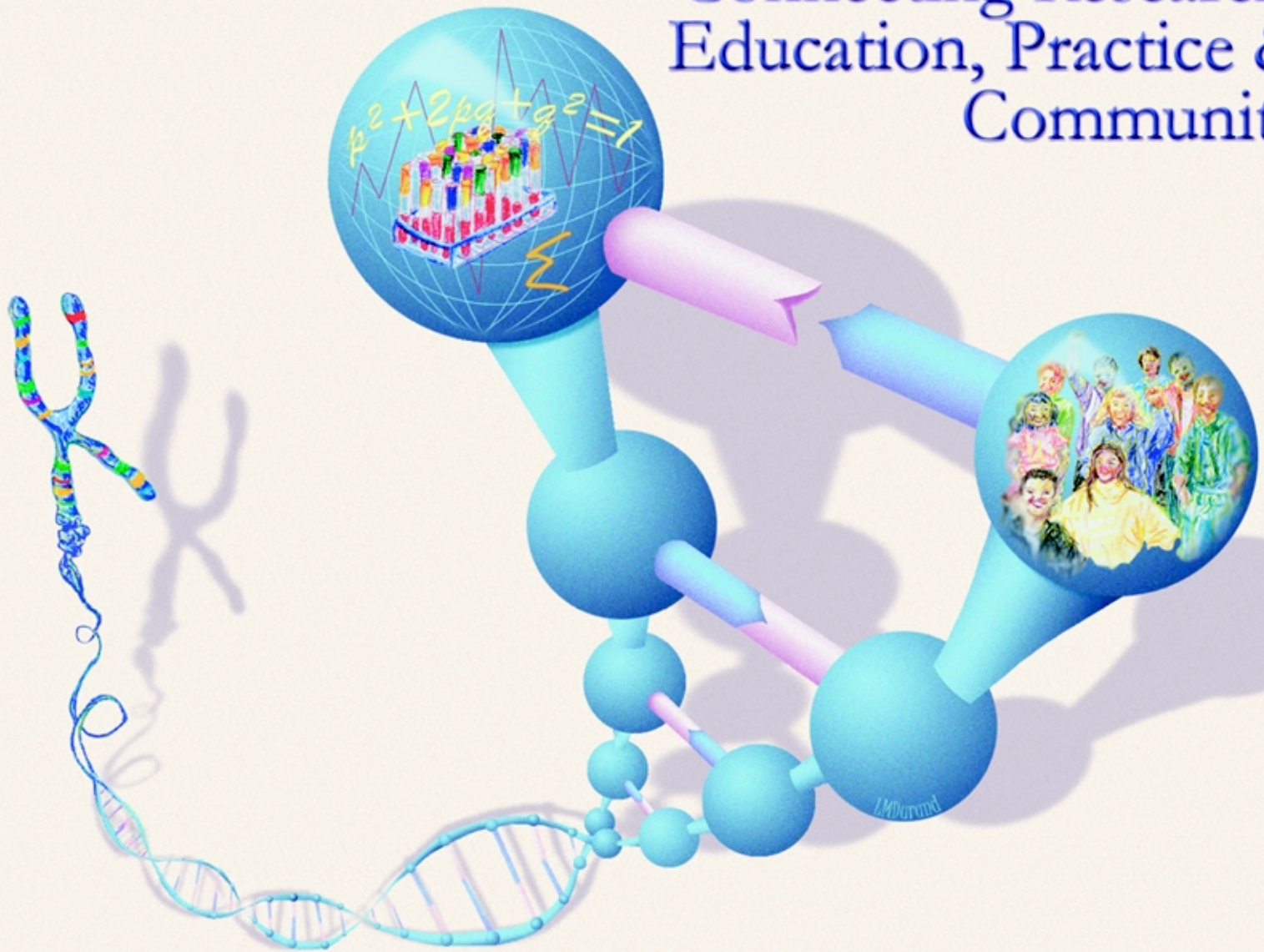


3rd National Conference on Genetics and Public Health:

Connecting Research,
Education, Practice &
Community



September 19-20, 2000
Ann Arbor, Michigan
Pre-Conference
September 18, 2000

Sponsors:

- *The Centers for Disease Control & Prevention
- *Health Resources & Services Administration
- *National Human Genome Research Institute
- *University of Michigan - School of Public Health
- *Michigan Department of Community Health
- *Association of State and Territorial Health Officials

Co-Sponsors:

- *Association of Maternal & Child Health Programs
- *American Public Health Association
- *Association of Schools of Public Health
- *Coalition of State Genetics Coordinators
- *National Association of County & City Health Officials
- *National Cancer Institute
- *National Newborn Screening & Genetics Resources Center
- *Ohio Department of Health

YOU ARE INVITED

The Planning Committee is very pleased to invite you to attend the Third National Conference on Genetics and Public Health. We hope the conference will be a strong learning and quality networking experience for you, one that enhances your abilities long after the conference ends.

The conference highlights critical issues of how genetic information and technology are impacting all facets of Public Health including research, education, and practice. Importantly, the impact of genetics on the diverse communities we serve is of critical concern.

This conference will be highly interactive, with emphasis on dialogue and exchange of information and ideas. Presenters will engage you in discussion on key topics in order to share their perspectives and expertise as well as to gain yours. In addition, there will be opportunities for you to meet informally with other conference attendees to discuss current issues and events of importance to you. So plan on joining us to share, learn and enjoy yourself!

See you in Ann Arbor

GENETICS PROGRAM PLANNING COMMITTEE

Co-Chairs:

David Johnson, MD, MPH

*Chief Medical Executive and Deputy Director
for Public Health
Michigan Department of Community Health*

Noreen M. Clark, PhD

*Dean and Marshall H. Becker Professor
School of Public Health
University of Michigan*

Committee:

Deborah Arms, PhD, RN

*Chief, Division of Prevention
Ohio Department of Health*

Sylvia M. Au, MS, CGC

*Hawaii State Genetics Coordinator
Hawaii Department of Health/CSHNB
Coalition of State Genetics Coordinators*

Melissa A. Austin, PhD

*Professor, Department of Epidemiology
Director, Public Health Genetics Program
University of Washington*

Janice Bach, MS

*Hereditary Disorders Program
Coordinator
Michigan Department of Community Health*

Timothy G. Baker

*Deputy Director, Office of Genetic and
Disease Prevention
Centers for Disease Control and
Prevention **

Jacalyn Bryan, RN, MS,

*Deputy Director for Policy and Programs
Association of State and Territorial Health
Officials*

Toby Citrin, JD

*Office of Community-Based Public Health &
Department of Health Management and
Policy
School of Public Health
University of Michigan*

Carol Garlinghouse, MSN, RN

*Manager, Clinical Services Unit
Cancer Prevention and Control Section
Michigan Dept. of Community Health*

Grace Gorenflo

*Associate Executive Director
National Association of County and City
Health Officials*

James W. Hanson, MD

*Senior Advisor for Medical Genetics
Division of Cancer Control and Population
Sciences
National Cancer Institute
National Institutes of Health*

George E. Hardy, Jr. MD, MPH

*Executive Director
Association of State and Territorial Health
Officials*

Wendy Katz, MPH

*Data Center Director
Association of Schools of Public Health*

Amy E. Klein, MPH

*Senior Analyst, Genetics
Association of State and Territorial Health
Officials*

Richard A. Levinson, MD, DPA

*Associate Executive Director for Programs
and Policy
American Public Health Association*

Deborah Linzer, MS, Post-Grad HSA

*Public Health Analyst, Genetic Services
Branch
Maternal and Child Health Bureau
Health Resources and Services
Administration*

Michele Lloyd-Puryear, MD, PhD

*Chief, Genetic Services Branch
Maternal and Child Health Bureau
Health Resources and Services
Administration **

Kathryn Peppe, RN, MS

*Chief, Division of Family and Community
Health Services
Ohio Department of Health, and President,
Association of Maternal and Child Health
Programs*

David Perlman, MPH

*Director, Office of Academic Outreach
School of Public Health
University of Michigan*

Patricia A. Peyser, Ph.D.

*Professor of Epidemiology
Director, Public Health Genetics
Interdepartmental Concentration
Department of Epidemiology
School of Public Health
University of Michigan*

Peter Rumm, MD, MPH

*Chief Medical Officer and State
Epidemiologist
Chronic Disease and Health Promotion
Wisconsin Division of Public Health
Council of State and Territorial
Epidemiologists*

Christa-Marie Singleton, MD, MPH

*Senior Analyst, Maternal & Child Health Policy
Association of State and Territorial Health
Officials*

Brad Therrell, PhD

*Director, National Newborn Screening and
Genetics Resources Center (NNSGRC)
University of Texas Health Science Center at
San Antonio*

Elizabeth Thomson, MS, RN, CGC, FAAN

*Program Director, ELSI Program
National Human Genome Research Institute
National Institutes of Health **

***CONFERENCE FUNDING AGENCIES**

THE THIRD ANNUAL CONFERENCE ON GENETICS IN PUBLIC HEALTH

CALL FOR ABSTRACTS

Resource Fair and Poster Session

Tuesday, September 19, 2000, 5-7 PM

Conference participants are invited to submit an abstract for poster for presentation at the 3rd Annual Genetics Conference. Abstracts and posters will only be considered if they incorporate the themes of the conference, Genetics in Public Health: Connecting Research, Education, Practice and Community. Abstracts and posters should be structured according to the following themes: Genetics and Public Health; Genetics and Education; Genetics and Medical Practice; Genetics and the Community; or a combination of any of the four categories.

Abstracts can be submitted either by e-mail or regular mail and must be received by August 21, 2000. No faxes, please. Because of limited space in the viewing hall, up to forty abstract submissions will be accepted. Authors will be notified of acceptance by September 1, 2000. For planning purposes, poster presentations must fit in a 4' x 4' area. Easels/mounting areas will be provided by the University of Michigan. You must confirm that you will be making your presentation no later than **September 1, 2000**.

SUBMISSION INSTRUCTIONS:

Complete the call for presentation form.

Attach a 250 word, or less, abstract of your research or project.

Descriptions of each accepted presentation will be reproduced in the conference materials exactly as submitted.

Formatting instructions: One page, single-spaced, font: Times Roman 12.

Fax copies will not be accepted.

Complete this form and send it with your abstract. Complete one form for each abstract presentation.

Name _____

Degree _____

Affiliation _____

Mailing Address _____

Phone _____

FAX _____

E-mail _____

Abstract Title _____

Authors _____

ABSTRACTS SHOULD BE SENT TO ASTHO GENETICS PROJECT, 1275 K STREET, NW, SUITE 800, WASHINGTON, DC 20005. E-MAIL ADDRESS: AKLEIN@ASTHO.ORG

THANK YOU TO THE FOLLOWING ORGANIZATIONS FOR THEIR SUPPORT OF THIS CONFERENCE



National
Human Genome
Research Institute

**SPECIAL THANKS TO THE GENETICS PROGRAM COVER DESIGNER:
LORI M. DURAND, THE CADENCE GROUP ASSOCIATES, WEB DEVELOPER, OFFICE OF GENETICS AND DISEASE PREVENTION,
CENTERS FOR DISEASE CONTROL AND PREVENTION**

GENERAL INFORMATION

ANN ARBOR, MICHIGAN

Founded in 1824, Ann Arbor, Michigan offers the advantages and diversity of big city living while retaining the small town appeal of friendliness, accessibility, and an easy life style. Home to our conference host-The University of Michigan, Ann Arbor is a vibrant community offering museums, live theatre, quality restaurants of nearly every epicurean and ethnic variety, extensive and unique shopping.

LOCATION

The conference will take place primarily at the Michigan League and the Horace Rackham Graduate School on the University of Michigan Central Campus. From these adjoining venues, you will be able to walk to two of the conference hotels (Campus Inn and Bell Tower), as well as the internationally acclaimed University Medical Center and School of Public Health. Just a block away is the State Street shopping and restaurant district. Within a few more blocks, you will find Ann Arbor's main downtown business district, featuring distinctive restaurants, unique shops, and a variety of entertainment venues.

TRANSPORTATION

Ann Arbor is located 25 miles west of Detroit's Metropolitan Airport, the midwest hub for our conference airline, Northwest. Commuter Express offers daily van service between the airport and 25 Ann Arbor hotels and The University of Michigan Union (\$22 one-way and \$42 round trip). Call 1-888-854-6700 for reservations and schedules.

FOR MORE INFORMATION

For more details about the sites and services in Ann Arbor, visit www.annarbor.org or call the Ann Arbor Area Convention and Visitors Bureau at 1-800-888-9487.

HOTELS

A number of on and off campus hotels have reserved room blocks for The Third National Conference on Genetics in Public Health. Please see housing instructions/hotel information on pages 8-9.

AIRLINE DISCOUNTS

Northwest Airlines has been designated as the official carrier for the attendees of The Third National Conference on Genetics in Public Health in Ann Arbor, Michigan. Northwest Airlines is offering a discounted rate to conference attendees. To obtain these discounts, call Northwest's Meeting Services Reservation Desk at 1-800-328-1111, M-F, 7:30 am - 7:30 pm (CT). Refer to WorldFile number **NMQ2L**.

CAR RENTAL

Alamo Rent-A-Car is offering special discounted rates for The Third National Conference on Genetics in Public Health. For reservations, call 1-800-732-3232 or visit www.alamo.com and refer to Group ID Number **603967**, Rate Code **GR**.

RECEPTION AND RESOURCE FAIR/POSTER SESSION

Tuesday, September 19, 5:00 pm - 7:00 pm

Come and learn about the State and Federal genetics programs.

PRE-CONFERENCE SYMPOSIUM

MONDAY, SEPTEMBER 18, 2000

GENETICS IN PUBLIC HEALTH: CONNECTING RESEARCH, EDUCATION, PRACTICE AND COMMUNITY

Sponsored by the University of Michigan School of Public Health

8:15-8:30 AM

Welcome

8:30-8:45

Dedication

8:45-8:50

Overview of the day's activities

8:50-9:25

Genetics and Public Health in the 21st Century: A Scientific Foundation for Using Genetic Information to Improve Health and Prevent Disease

With the completion of the Human Genome Project, numerous DNA-based tests may become available in medical and public health practice. An important challenge for the years to come is the appropriateness of using genetic information in disease prevention, the fundamental mission of public health. Using examples from both single gene disorders and multifactorial conditions, Dr. Khoury will describe recent CDC collaborative initiatives in: 1) conducting population research on human genome epidemiology, 2) developing a national genetic testing assessment program, 3) and conducting policy and communication research in genetics and public health.

Muin J. Khoury, Director, Office of Genetics and Disease Prevention, CDC

9:25-9:45

Genetics and Health Promotion: Access to Genetic Resources and Services

The "new" genetics offers promises of promoting health. We will gain new understanding of the disease process, tailor therapies through pharmacogenomics, increase our ability to screen, change our concepts of normalcy and disabled.

Michele Lloyd-Puryear, Chief, Genetic Services Branch, Maternal and Child Health Bureau, HRSA

9:45-10:00

Genetics in Public Health Education: An Interdepartmental Concentration in Public Health Genetics

The School of Public Health at the University of Michigan recognizes the challenge created by the rapid expansion of genetic knowledge and technologies. In response to this challenge, an innovative education program, the Public Health Genetics Interdepartmental Concentration, was initiated in 1996. The multidisciplinary approach to the curriculum will be described along with profiles of participating students and faculty. Internship experiences as well as future opportunities for graduates will be illustrated. Our approach provides a contrast to programs in other Schools of Public Health.

Patricia A. Peyser, Professor of Epidemiology and Director, Public Health Genetics Interdepartmental Concentration, School of Public Health, University of Michigan

10:00-10:15 Q AND A

10:15-10:35 BREAK

10:35-10:55

Genetics and the Community

How will the community react to the increasing application of genetics in public health programs? Dr. Ossorio will consider the issues likely to engage the public, special concerns of racial and ethnic minorities, and the need to involve the community in policy making.

Pilar Ossorio, Assistant Professor of Law & Medical Ethics, University of Wisconsin Law School

10:55-11:15

Is there a Pink Slip in My Genes? Genetic Discrimination in the Workplace

Mr. Miller will address the growing concerns about genetic discrimination in the workplace and suggest possible methods for addressing such discrimination. He will discuss workers' fears and the reality of genetic discrimination in employment, as well as the application of existing federal statutes, particularly the Americans with Disabilities Act, state statutes, and the limited amount of case law in this area.

Paul Steven Miller, Commissioner, U.S. Equal Employment Opportunity Commission

Keynote Speaker

11:15 AM -12:00NOON

Public Health Genetics in a World Where the Human Sequence is Known

The year 2000 has seen the vast majority of the sequence of the human genome deposited in public databases, in either finished or working draft form. At the same time, a catalog of common human variations is being rapidly generated. These research tools should make it possible to uncover major genetic susceptibility factors for most common illnesses in the next 5 - 7 years. This in turn will permit individualized prediction of future risks of illness, allowing programs of preventive medicine to be designed, with considerable benefit to public health. In the longer term, new therapies based on a detailed understanding of the genetics of illness will be much more successful than current therapies for many disorders. For the full medical benefits of the genomics revolution to be realized, however, solutions to the problems of genetic discrimination and breach of privacy must be found.

Francis Collins, Director, National Human Genome Research Institute

12:00-12:20 Q AND A

12:20-1:45 GROUP LUNCH

1:45-3:15 CONCURRENT SESSIONS

1. Genetics, Race and Ethnicity
2. Genetics in Cancer Control Programs
3. Genetics and the Media
4. Public Policy on Antibiotic Resistance: The Role of Genetics
5. Gene Therapy on Trial?
6. Studying the Genetics of Complex Diseases
7. Genetic Counseling: Myths and Realities
8. International Issues in Genetic Research and Practice
9. Role of Genetics in Public Health Prevention Programs
10. Genetics Law and Policy
11. Gene-Environment Interactions and Chronic Diseases
12. Eugenics, Genetics and Public Health

3:15-3:30 BREAK

3:30 - 4:00: CLOSING SESSION

The Human Genome Perspective: "On The Inside Out"

DNA sequence variation not only defines disease susceptibility genes, but also challenges the truth of 'perceived' and 'believed' links between human identity and biology, inculcated in the American culture. The social implications of uncoupling individual and group identity from superficial appearances are enormous. Will emerging knowledge of human genome sequence variation effect a paradigm shift in self image and group identity?

Georgia Dunston, Department of Microbiology, Howard University College of Medicine

4:00 - 5:30: RECEPTION

Celebrating the Contributions of John Maassab to Public Health: Using Genetics in Flu Vaccine Development

PROGRAM

MONDAY, SEPTEMBER 18, 2000 MONDAY NIGHT KICK-OFF TO THE THIRD NATIONAL CONFERENCE ON GENETICS AND PUBLIC HEALTH

4:00 – 5:00

Genetics 101 for Public Health Professionals

This special introductory session for national conference attendees will provide an overview of human genetics principles, technology, and terminology using clinical and public health examples.

*Wendy Uhlmann, Genetic Counselor, Division of Medical Genetics,
University of Michigan Health System and President, National Society of
Genetic Counselors*

NATIONAL CONFERENCE AGENDA

TUESDAY, SEPTEMBER 19, 2000

8:30 – 9:45

Opening Plenary Session/Keynote Address Welcoming Remarks

*David Johnson, Chief Medical Executive and Deputy Director for Public
Health, Michigan Department of Community Health
Noreen M. Clark, Dean and Marshall H. Becker Professor of Public Health,
University of Michigan School of Public Health*

Keynote Speaker

Public Health Genetics: An Emerging Interdisciplinary Field for the Post-Genomic Era

Dr. Omenn will examine the tension in public health between applying what we know and investing in research to improve the basis for successful interventions in heterogeneous populations. As genetics continues to grow in importance in public health, and as the public becomes more knowledgeable and more demanding of genetics services, we will need a credible process for public discourse and for respectful consideration of diverse views.

*Gilbert S. Omenn, Executive Vice President for Medical Affairs, Professor of
Molecular Medicine and Genetics, Professor of Internal Medicine, Professor
of Human Genetics, Professor of Public Health, University of Michigan*

9:45-10:15: BREAK

10:15 – 11:50

PLENARY SESSION

Genetics in Public Health Practice: Current Status and Future Directions

The number and scope of public health genetics activities has been increasing every year. The panel members will present an update on federal and state public health genetics activities. The session will also address the challenges in implementing multidisciplinary training in schools of public health to meet the demand for trained professionals in public health genetics.

*Sylvia M. Au, President, Coalition of State Genetics Coordinators
Brad Therrell, Executive Director, National Newborn Screening and Genetics
Resource Center, University of Texas Health Science Center at San Antonio
Melissa Austin, Professor, Department of Epidemiology and Director, Public
Health Genetics Program, University of Washington, Seattle
Munir J. Khoury, Director, Office of Genetics and Disease Prevention - CDC
Michele Lloyd-Puryear, Chief, Genetic Services Branch, Maternal and Child
Health Bureau, HRSA*

12:00 – 1:15: LUNCH BREAK

1:15 – 2:45

PLENARY SESSION

Genetics in Public Health: Participants' Perceptions of Current Practice and Future Needs

Utilizing key-pad technology, conference participants will register their views on the potential of genetics in public health, and will identify differences in their perceptions. Issues and differences disclosed by key-pad "voting" will be discussed by a panel representing research, practice, academe and the community, and by the audience as a whole.

Moderator: William A. Sederburg, President, Ferris State University

2:45-3:00: BREAK

3:00-4:30: CONCURRENT SESSIONS I

1. Newborn Hearing Screening

This session will review nationwide hearing screening programs, development of protocols for genetic testing in infants confirmed with hearing loss, and a consumer perspective to all the changes.

2. Public Health Response to Heritable Cancer Risk Factors

This session will review inherited mutations and common cancers and discuss the role of public health in risk factor identification and management.

3. Human Genome Epidemiology (HuGE)

In this session, speakers will present examples addressing three major topics in human genome epidemiology: gene prevalence and associations, gene-environment interactions, and evaluation of genetic testing. Examples will highlight practical issues, such as access to study populations, as well as laboratory and epidemiologic findings.

4. Role of Community in Public Policy Development

A panel representing a variety of genetics policy projects and policy-oriented organizations will consider the role of community in shaping policies guiding genetics in public health. Special attention will be given to successful models of engaging communities of color and other minority groups in genetics policy development.

5. Integrating Competencies in Genetics into Public Health Workforce Development

The panel will discuss the development of competencies in genetics and public health as the foundation for training strategies, the integration of genetics into the Training of Public Health Workforce, Assessments of the Genetics Workforce, and the University of Washington and University of Michigan Schools of Public Health approaches to developing practicums that link formal training with public health practice.

6. New Genetics/Newborn Screening Technology: Policy Implications and State Role in Acquisition, Use and Oversight

This session will discuss the involvement of current genetic technologies and laboratory tools in state genetics programs and in state health programs. Speakers will highlight program integration, infrastructure/data sources, funding issues, and areas for possible legislative involvement as states become involved with genetic technology oversight, quality assessment, and evaluation.

5:00-7:00

RECEPTION AND RESOURCE FAIR:

Poster Session and Opportunity to Learn About the State and Federal Genetics Programs

Cash Bar

PROGRAM

WEDNESDAY, SEPTEMBER 20, 2000

8:30 – 10:00: CONCURRENT SESSIONS II

1. Birth Defects Programs

The panel will address the current status of birth defects programs in the country and comment on future developments in this area. Two states will describe their birth defects programs with special emphasis on how their programs impact other public health programs in their state.

2. Genetic Factors in Heart Disease: Public Health Impact and Implications

This session will provide an overview of genetic factors in heart disease, discuss implications for program planning, and consider the role of advocacy organizations in promoting the public health agenda.

3. Population Screening for Genetic Disease

This session will discuss the emerging roles of genetic epidemiologists in public health by examining expanding issues in testing and surveillance for cystic fibrosis, hereditary hemochromatosis, and hemoglobinopathies. It will also delve into the “new wave” of genetic epidemiology that deals with more common diseases such as heart conditions and cancers that have more attributable risk to the population at large.

4. Advancing Public Health Genetics Through Partnerships with Advocacy Organizations

The leadership from genetics advocacy organizations will discuss the role their organizations play in educating and engaging the public and advocating policies on behalf of their constituencies. Current and potential relationships between advocacy organizations, public health agencies, health care providers and government will be explored.

5. Information Resources for Genetics in Public Health

The panel will demonstrate and discuss electronic information resources on genetics that are available to the public health community, including GeneClinics and GeneTests, Genetic Resources on the Web (GROW), GeneSage, and Kansas University Medical Center. Other presentations and discussions will be added, and an open forum on available systems as well as needs will be promoted. This session also will be presented in concurrent sessions III.

6. Developing Programs, Plans and Policies

Panel members will address how to develop public health genetics programs, state genetics plans and public policies and clinical guidelines. A special effort will be made to allow workshop participants to interact with the panel to allow discussion of specific areas of concern and find possible solutions.

10:00-10:30: BREAK

10:30-12:00: PLENARY SESSION

Ethics, Law and Society

This session is designed to provide information about ethical and societal perspectives on advances in genetic research and technologies and the interpretation and use of genetic information. An update on nationwide genetics laws and a legislator's experience in genetics will be presented.

Panel:

Moderator: Elizabeth Thomson, ELSI Research Program, National Human Genome Research Institute

Cheyne Calvo, National Conference of State Legislatures

Patrick Johnston, Senator, California

Eric Juengst, Center for Biomedical Ethics, Case Western Reserve

Charmaine Royal, National Human Genome Center, Howard University

12:00-1:30: GROUP LUNCH AND ROUNDTABLE DISCUSSIONS BY DISCIPLINE

1:45-3:15: CONCURRENT SESSIONS III

1. Genetic Factors in Obesity: Public Health Impact and Implications

This session will provide an overview of genetic factors in obesity and discuss the implications for public health program planning, including the role of partner organizations.

2. Genetics of Osteoarthritis and Osteoporosis: Public Health Implications

This session will provide an overview of genetic factors in osteoarthritis and osteoporosis, discuss implications for programs, and consider the role of advocacy partners in public health programming.

3. Genetics and Occupational Safety and Health; Genetics and Berylliosis

This session will highlight research on gene-environment interactions that provide information on genetic factors in occupational diseases. Case studies will be used to emphasize issues surrounding the ethical use of genetic information in the workplace.

4. Experiencing Public Dialogue

Attendees of this session will experience a “live” community dialogue considering ethical, legal and social issues arising out of genetics in the public health setting. This experience will give participants a first-hand education in the potential of the dialogue process for informing and engaging the community at large.

5. Information Resources for Genetics in Public Health (Repeated from Session II)

The panel will demonstrate and discuss electronic information resources on genetics that are available to the public health community, including GeneClinics and GeneTests, Genetic Resources on the Web (GROW), GeneSage, and Kansas University Medical Center. Other presentations and discussions will be added, and an open forum on available systems as well as needs will be promoted.

6. Genetics, Medicine, and Managed Care

This session will explore the interface between the current uses of genetics in medical practice as well as the current and future uses of genetics by managed care organizations.

3:15-3:30: BREAK

3:30-4:30

CLOSING SESSION

Advancing the Public Health Genetics Agenda: Where Do We Go From Here?

A panel of leadership from government, practice, academe and community will consider the potential of a permanent “network” to coordinate and further policies and programs to realize the full potential of genetics in public health.

Moderator: Toby Citrin, Office of Community Health-Based Public Health and Department of Health Management and Policy, University of Michigan School of Public Health

HOUSING INSTRUCTIONS/ HOTEL INFORMATION

INSTRUCTIONS:

- Complete each section below in detail to ensure a quick and accurate response. Please make sure all spelling is correct, as the text that you enter will be used on all housing documentation.
- **IMPORTANT:** All room reservations require a deposit with a major credit card at the time of booking equal to one night's room rate.
- Any changes and/or cancellations must be submitted in writing no later than 8/16/00. Submit your written cancellation request by fax or mail (see address/fax number at right).

THREE WAYS TO REGISTER:

- **Online** www.astho.org
- **Fax** completed form to 301-984-9441
- **Mail** completed form to:
Genetics 2000 Housing
6220 Montrose Road
Rockville, MD 20852

DEADLINE TO RECEIVE YOUR HOUSING FORM WITH DEPOSIT: 8/16/00

HOTEL DESCRIPTIONS & RATES

ON-CAMPUS HOTELS

1. The Dahlmann Campus Inn

615 East Huron Street, Ann Arbor, Michigan 48104
www.campusinn.com

The Dahlmann Campus Inn, located within walking distance to the University of Michigan and downtown Ann Arbor, offers elegant accommodations with breathtaking views of Ann Arbor. Take advantage of the exercise room, saunas, outdoor pool and gift shop filled with University of Michigan and Ann Arbor mementos.

Standard Single/Double	\$113/\$128
Penthouse Single/Double (limited availability)	\$154/\$169
Suite Single/Double (limited availability)	\$185/\$200
Additional person	\$15

2. The Bell Tower Hotel

300 South Thayer, Ann Arbor, Michigan 48104
www.belltowerhotel.com

The Bell Tower Hotel, recipient of the city of Ann Arbor's coveted Award for Outstanding Historic Preservation, combines old world elegance with gracious service. The Bell Tower offers superb accommodations in a truly distinctive setting, an escape from the ordinary. Complimentary continental breakfast is included. Located on the University of Michigan's campus.

Standard Single/Double	\$125/\$140
Additional person	\$15

OFF-CAMPUS HOTELS

3. Courtyard by Marriott

3205 Boardwalk, Ann Arbor, Michigan 48108

The Courtyard by Marriott is located off-campus off of I-94 and State Street; close to the University of Michigan and the Briarwood Mall. The Courtyard by Marriott offers an indoor pool, whirlpool, sun deck and fitness center.

Standard Single/Double/Triple/Quad	\$99/\$99
Suite Single/Double	\$119/\$119
Corner/Executive Suites	\$129

4. Fairfield Inn

3285 Boardwalk, Ann Arbor, Michigan 48108

The Fairfield Inn is located behind the Courtyard by Marriott off of I-94 and State Street; close to the University of Michigan and the Briarwood Mall. The Fairfield Inn offers an indoor pool, whirlpool, use of the Courtyard by Marriott's fitness center and complimentary continental breakfast.

Standard Single/Double/Triple/Quad	\$79/\$79
------------------------------------	-----------

COMPLIMENTARY SHUTTLE BUS SERVICE WILL BE OFFERED ON TUESDAY AND WEDNESDAY BETWEEN THE OFF-CAMPUS HOTELS AND THE MEETING SITE.

THE THIRD NATIONAL CONFERENCE ON GENETICS AND DISEASE PREVENTION * HOUSING FORM * SEPTEMBER 19-20, 2000

☐ I am sharing a room but am not the person making the reservation. Name of reservation holder is: _____

First Name _____

Last Name _____

Institution/Company _____

Address _____

City _____ State _____ Zip Code _____

Country _____

Phone (include area code) _____

Fax (include area code) _____

E-mail address _____

☐ Special Needs: If you have any special housing needs, please check this box. A Genetics housing representative will contact you by phone.

ARRIVAL DATE Month _____ Day _____

DEPARTURE DATE Month _____ Day _____

Choose your room type:

☐ Smoking

☐ Non-Smoking

HOTEL PREFERENCE

1. _____ Rate Requested: _____

2. _____ Rate Requested: _____

3. _____ Rate Requested: _____

*Note: Room rates are per night in US Dollars and do not include occupancy tax (8%). An acknowledgement will be sent to you within fourteen (14) of the date your housing form is received.

ROOM TYPE

☐ Single (1 person, 1 bed)

☐ Double (2 people, 1 bed)

☐ Double/Double (2 person, 2 beds)

☐ Triple (3 people, 2 beds)

☐ Quad (4 people, 2 beds)

☐ Other (please specify) _____

☐ I already have roommate(s) I would like to share with. Their name(s) are:

1. _____

2. _____

3. _____

RESERVATION GUARANTEE All rooms must be guaranteed in US Funds with a major credit card.

Credit Card: ☐ MasterCard ☐ Visa

Card Number _____ Exp. Date _____

Full Name on Card _____ Signature _____

Fax to: 301-984-9441, Mail to: Genetics 2000 Housing, 6220 Montrose Road, Rockville, MD 20852

REGISTRATION INSTRUCTIONS

Please fill out the attached registration form completely (type or print clearly.)

PAYMENT

Registration will not be considered complete until payment is received in full. The Third National Conference on Genetics in Public Health will accept Visa, MasterCard, checks made payable to ASTHO (Federal ID #35-1044487), and signed Government Purchase Orders or Training Orders.

REGISTER ON-LINE

(credit cards only)

www.astho.org

MAIL TO

(checks and purchase orders)

Genetics Conference Registration Coordinator
6220 Montrose Road
Rockville, MD 20852

FAX TO

(credit cards/purchase orders and training orders only)

Genetics Conference Registration Coordinator
(301) 984-9441

Please do not mail your form after you have registered by fax.

To receive the Early Bird registration rate, the Registration Coordinator must receive your form and complete payment no later than **August 15, 2000**. For the Advance discount rate, registration and payment must be received no later than **September 8, 2000**.

REGISTRATION CONFIRMATION

Confirmation of your registration will be mailed within 3 weeks of receipt of your registration. If you have not received confirmation within this time frame, or if there is an error, please contact Corey Chandler, Registration Coordinator, at (301) 984-9450, extension 17, or by email at Coreychandler@conferencemanagers.com.

REGISTRATION MATERIALS

Name badges, tickets, programs, etc. will not be mailed in advance. Attendees who have registered in advance may pick up their registration materials on-site at the Advance Registration area in the Second Floor foyer area of the Michigan League.

CANCELLATION POLICY

50% of the full registration amount will be refunded if cancellation is received in writing by the Registration Coordinator no later than **September 1, 2000**. Refunds will not be available for cancellations received after September 1, 2000.

SPECIAL NEEDS

If you require vegetarian meals, special assistance or handicapped accessibility in order to fully participate in the meeting, please check the special needs box on the registration form. A conference manager will be in touch with you to discuss your needs.

ON-SITE REGISTRATION HOURS

If you have registered in advance you may pick up your registration materials during the following hours:

Monday, September 18	7:30 am - 5:00 pm
Tuesday, September 19	7:30 am - 5:00 pm
Wednesday, September 20	7:30 am - 3:00 pm

IMPORTANT DATES

August 15, 2000	Early Bird deadline
August 15, 2000	Last day to receive 50% cancellation refund
September 8, 2000	Advance Discount deadline

THE THIRD NATIONAL CONFERENCE ON GENETICS IN PUBLIC HEALTH

ADVANCE REGISTRATION FORM

September 19-20, 2000 • University of Michigan • Ann Arbor, Michigan

REGISTRATION FEES

Pre-Conference Symposium \$50
(Includes all Monday events)

National Conference: Early Bird \$150
(Registration and payment must be received by August 15, 2000)

National Conference: Advance \$200
(Registration and payment must be received by September 8, 2000)

National Conference after September 8, 2000 and On-Site \$300

Student \$60
(Includes continental breakfasts but not lunches or social event)

Daily \$175
(Available on-site only)

Please write in the session numbers of the concurrent sessions you will attend:

Monday PM (if you are registered for the Pre-Conference Symposium: _____)

Check here if you plan to attend Genetics 101 on Monday: _____

Tuesday, Session I: _____

Wednesday, Session II: _____

Wednesday, Session III: _____

Please type or print all requested information:

☐ Dr ☐ Mr ☐ Mrs ☐ Ms

First Name

Last Name Degree (MD, PhD, MPH, etc.)

Nickname/how your name should appear on your badge

Title

Organization

Address

City, State, Zip

Country

Phone (include area code)

Fax (include area code)

E-mail address

- ☐ I plan to use the hotel shuttle service
☐ Please contact me to discuss my special needs. I prefer to be contacted by phone/fax/e-mail (circle one).

Registration fee (please check one) \$ _____

- ☐ Early Bird (before August 15, 2000) \$150
☐ Advance (before September 8, 2000) \$200
☐ After September 8, 2000 and on-site \$250
☐ Student \$60

Pre-Conference Symposium, September 18 (\$50 per person)

_____ Total \$ _____

Total Due \$ _____

PAYMENT

Registrations without complete payment will be returned. Please make checks and Purchase Orders/Training Orders payable to ASTHO (Federal ID# 35-1044487).

Register On-Line: (credit cards only)

www.astho.org

Mail to: (checks and purchase orders)

Genetics Conference Registration Coordinator
6220 Montrose Road, Rockville, MD 20852

Fax to: (credit cards/purchase orders and training orders only)

Genetics Conference Registration Coordinator
(301) 984-9441

Please do not mail your form after you have registered by fax.

Amount Enclosed \$ _____

- ☐ Check enclosed ☐ Signed Government Purchase Order or Training Order enclosed
☐ Please charge my Visa/MasterCard

Name on Card

Card Number Expiration Date

Authorized Signature

By what type of agency are you employed?

- ☐ Health Department
☐ Federal Agency
☐ Academia
☐ Public Interest
☐ Industry
☐ Other _____

**THE THIRD NATIONAL CONFERENCE ON
GENETICS IN PUBLIC HEALTH**

6220 Montrose Road
Rockville, MD 20852

First-Class Mail
U.S. Postage
PAID
Permit No. 48
Merrifield, VA

**GENETICS IS TRANSFORMING
THE PRACTICE OF PUBLIC HEALTH**

LEARN HOW GENETICS WILL AFFECT YOUR WORK IN PUBLIC
HEALTH RESEARCH, TEACHING, PRACTICE AND COMMUNITY
OUTREACH

**ATTEND THE THIRD ANNUAL CONFERENCE
ON GENETICS IN PUBLIC HEALTH:**

CONNECTING RESEARCH, EDUCATION, PRACTICE & COMMUNITY

*AT THE UNIVERSITY OF MICHIGAN IN ANN ARBOR
SEPTEMBER 19-20, 2000.*

PRE-CONFERENCE SYMPOSIUM: SEPTEMBER 18, 2000

HIGHLIGHTS INCLUDE:

- Plenary sessions on informational resources, funding opportunities, model programs, law and policy
- Workshops on epidemiology, education, program administration, maternal and child health, chronic disease, environmental and occupational health
- Interactive participation with keypads to share perceptions regarding current practice and future needs of genetics in public health
- Displays; exhibits; posters

WHO SHOULD ATTEND:

- Federal, state and local public health and genetics professionals
- Health care providers
- Faculty and students at Schools of Public Health, and other health professions schools
- Community advocacy organizations
- Health policy-makers