

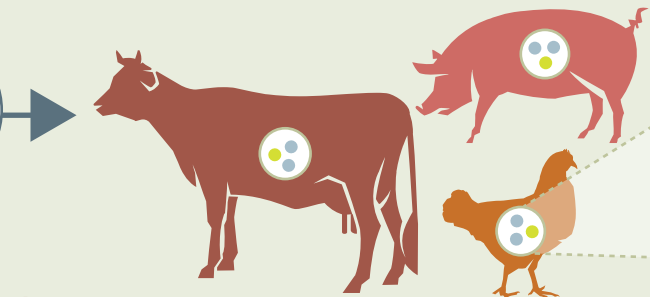


ANTIBIOTIC RESISTANCE

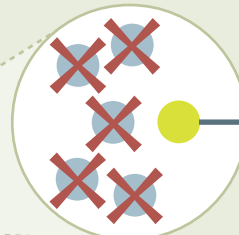
from the farm to the table

RESISTANCE

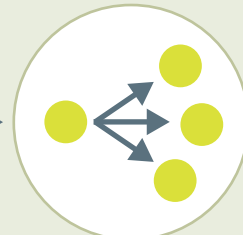
Animals can carry harmful **bacteria** in their intestines



When **antibiotics** are given to animals...



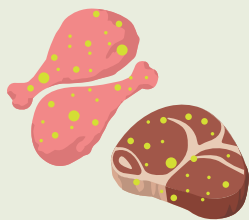
Antibiotics kill most bacteria



But resistant bacteria can survive and multiply

SPREAD

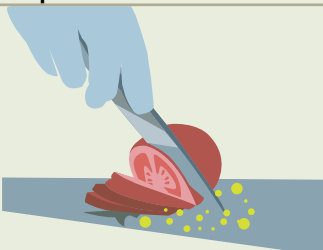
Resistant bacteria can spread to...



animal products



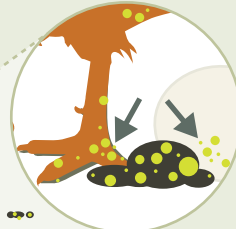
produce through contaminated water or soil



prepared food through contaminated surfaces



the environment when animals poop

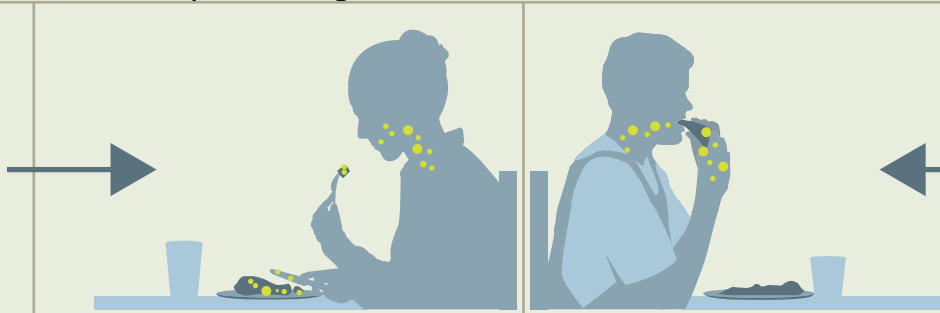


EXPOSURE

People can get sick with resistant infections from...



contaminated food



contaminated environment

Learn 4 steps to prevent food poisoning at www.foodsafety.gov

IMPACT

Some resistant infections cause...



mild illness



severe illness and may lead to death

About **1 in 5** resistant infections are caused by germs from food and animals.

Source: *Antibiotic Resistant Threats in the United States, 2013*

Learn more about antibiotic resistance and food safety at www.cdc.gov/foodsafety/antibiotic-resistance.html
Learn more about protecting you and your family from resistant infections at www.cdc.gov/drugresistance/protecting_yourself_family.html

