

## 2009-2010 Influenza Season Week 13 ending April 3, 2010

All data are preliminary and may change as more reports are received.

**Synopsis:** During week 13 (March 28-April 3, 2010), influenza activity decreased slightly in the U.S.

- 105 (3.7%) specimens tested by U.S. World Health Organization (WHO) and National Respiratory and Enteric Virus Surveillance System (NREVSS) collaborating laboratories and reported to CDC/Influenza Division were positive for influenza.
- All subtyped influenza A viruses reported to CDC were 2009 influenza A (H1N1) viruses.
- The proportion of deaths attributed to pneumonia and influenza (P&I) was below the epidemic threshold.
- One pediatric death associated with laboratory confirmed influenza A was reported; the subtype was undetermined.
- The proportion of outpatient visits for influenza-like illness (ILI) was 1.1%, which is below the national baseline of 2.3%. All 10 regions reported ILI below region-specific baseline levels.
- No states reported widespread influenza activity. Three states reported regional influenza activity. Puerto Rico and three states reported local influenza activity. The District of Columbia, Guam and 33 states reported sporadic influenza activity. Eleven states reported no influenza activity, and the U.S. Virgin Islands did not report.

### National and Regional Summary of Select Surveillance Components

HHS Surveillance Regions**	Data for current week			Data cumulative since August 30, 2009 (Week 35)*						
	Out-patient ILI†	% positive for flu‡	Number of jurisdictions reporting regional or widespread activity§	A (H1)	A (H3)	2009 A (H1N1)	A (unable to subtype)¶	A (Subtyping not performed)	B	Pediatric Deaths
<b>Nation</b>	Normal	3.7%	3 of 54	34	64	66,449	288	22,354	293	270
<b>Region 1</b>	Normal	0.0%	0 of 6	4	4	3,402	14	503	11	6
<b>Region 2</b>	Normal	0.9%	0 of 4	8	6	1,801	0	2,394	14	19
<b>Region 3</b>	Normal	2.1%	0 of 6	3	11	10,708	48	1,453	18	14
<b>Region 4</b>	Normal	11.5%	3 of 8	0	7	9,723	95	4,641	88	52
<b>Region 5</b>	Normal	3.0%	0 of 6	8	25	9,486	46	1,580	19	36
<b>Region 6</b>	Normal	5.1%	0 of 5	2	3	5,169	19	5,403	56	71
<b>Region 7</b>	Normal	4.9%	0 of 4	3	1	3,281	3	847	9	8
<b>Region 8</b>	Normal	1.3%	0 of 6	4	2	9,858	0	3,940	56	16
<b>Region 9</b>	Normal	0.2%	0 of 5	0	4	8,335	49	1,245	18	38
<b>Region 10</b>	Normal	1.0%	0 of 4	2	1	4,686	14	348	4	10

\*Influenza season officially begins each year at week 40. This season data from week 35 will be included to show the trend of influenza activity before the official start of the 2009-10 influenza season.

\*\*HHS regions (Region 1 CT, ME, MA, NH, RI, VT; Region 2: NJ, NY, Puerto Rico, US Virgin Islands; Region 3: DE, DC, MD, PA, VA, WV; Region 4: AL, FL, GA, KY, MS, NC, SC, TN; Region 5: IL, IN, MI, MN, OH, WI; Region 6: AR, LA, NM, OK, TX; Region 7: IA, KS, MO, NE; Region 8: CO, MT, ND, SD, UT, WY; Region 9: AZ, CA, Guam, HI, NV; and Region 10: AK, ID, OR, WA). Use of the national baseline for regional data or regional baselines for state data is not appropriate.

† Elevated means the % of visits for ILI is at or above the national or region-specific baseline.

‡ National data are for current week; regional data are for the most recent three weeks.

§ Includes all 50 states, the District of Columbia, Guam, Puerto Rico, and U.S. Virgin Islands.

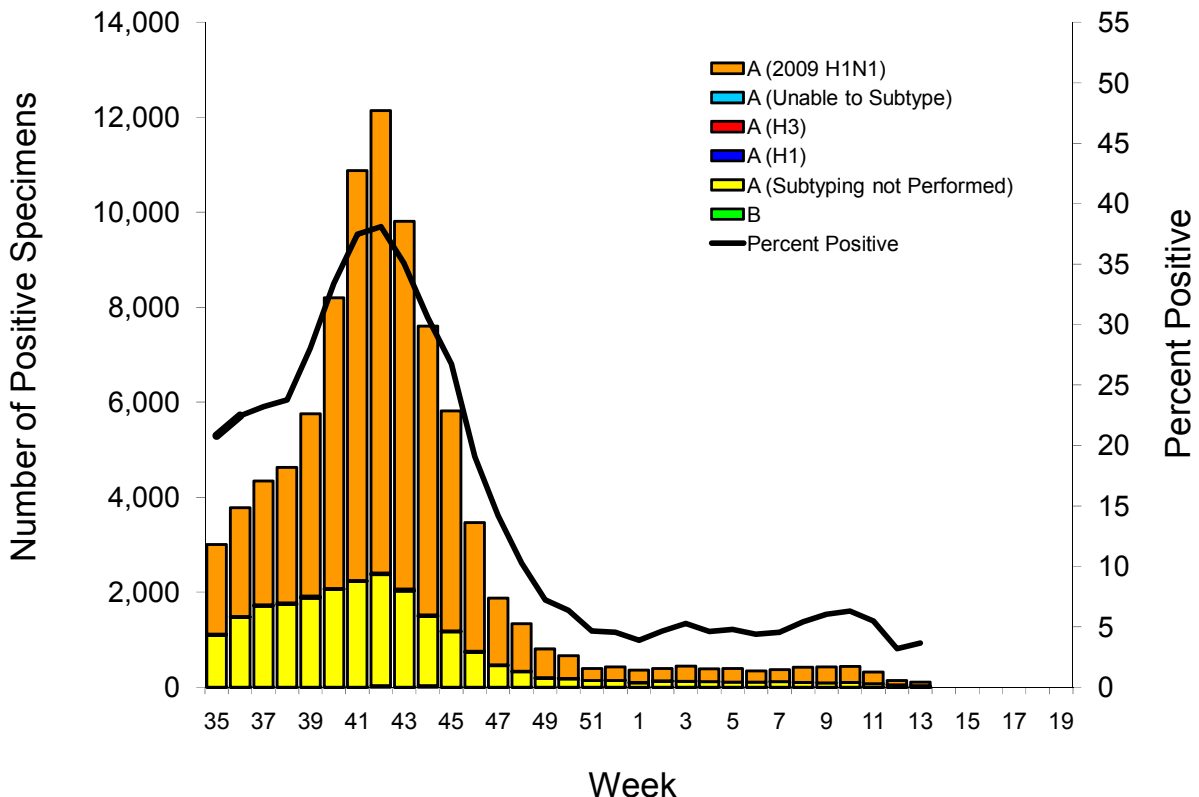
¶ Subtyping results for the majority of specimens in this category were inconclusive because of low virus titers.

**U.S. Virologic Surveillance:** WHO and NREVSS collaborating laboratories, located in all 50 states and Washington, D.C., report to CDC the number of respiratory specimens tested for influenza and the number positive by influenza type and subtype. The results of tests performed during the current week are summarized in the table below.

	<b>Week 13</b>
<b>No. of specimens tested</b>	2,871
<b>No. of positive specimens (%)</b>	105 (3.7%)
<b>Positive specimens by type/subtype</b>	
<b>Influenza A</b>	103 (98.1%)
<b>A (2009 H1N1)</b>	69 (67.0%)
<b>A (subtyping not performed)</b>	34 (33.0%)
<b>A (unable to subtype)</b>	0 (0.0%)
<b>A (H3)</b>	0 (0.0%)
<b>A (H1)</b>	0 (0.0%)
<b>Influenza B</b>	2 (1.9%)

During week 13, two influenza B viruses were reported, and all subtyped influenza A viruses reported to CDC this week were 2009 influenza A (H1N1) viruses.

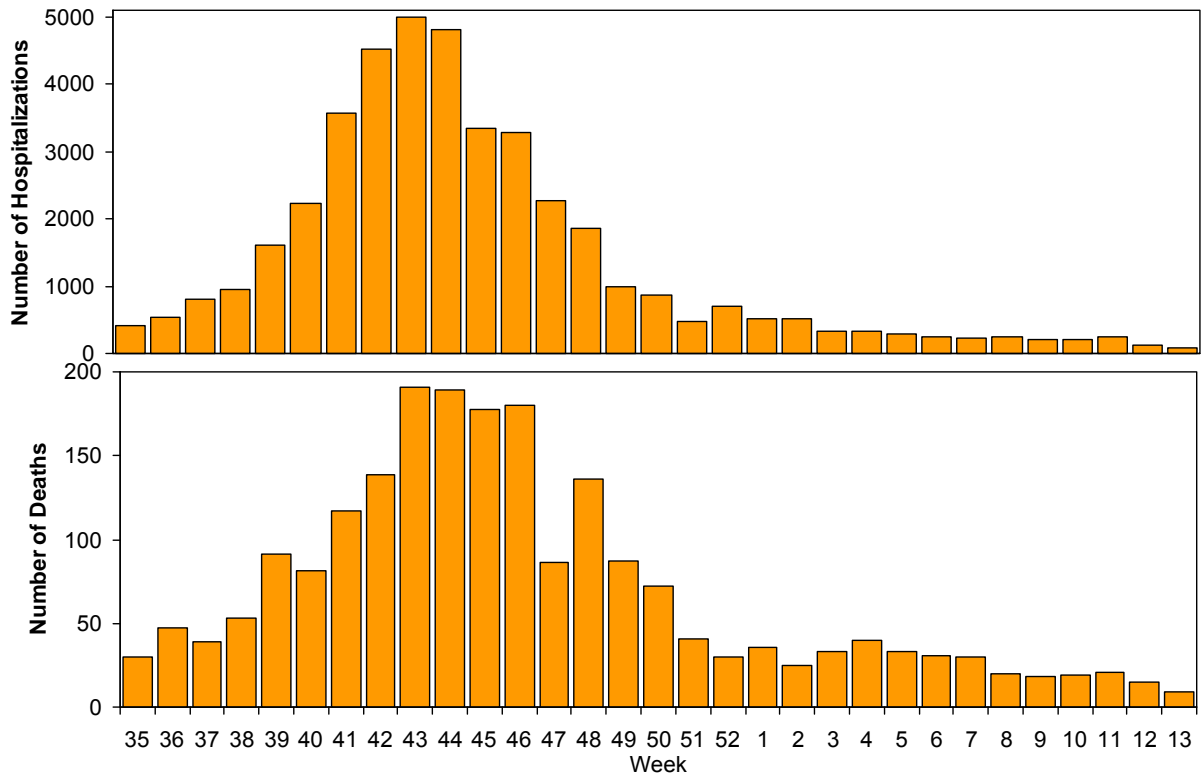
**Influenza Positive Tests Reported to CDC by U.S. WHO/NREVSS Collaborating Laboratories, National Summary, August 30, 2009-April 3, 2010**



**Pneumonia and Influenza Hospitalization and Death Tracking:** The Aggregate Hospitalization and Death Reporting Activity (AHDRA) system was implemented on August 30, 2009, and replaces the weekly report of laboratory confirmed 2009 H1N1-related hospitalizations and deaths that began in April 2009. Jurisdictions report to CDC the number of hospitalizations and deaths resulting from all types or subtypes of influenza, not just those associated with 2009 H1N1. Counts were reset to zero on August 30, 2009. From August 30, 2009 – April 3, 2010, 41,821 laboratory-confirmed influenza-associated hospitalizations and 2,117 laboratory-confirmed influenza-associated deaths were reported to CDC.

Reporting of influenza-associated hospitalizations and deaths through AHDRA was discontinued during the week ending April 3, 2010 (week 13). CDC will continue to use its traditional influenza surveillance systems to track the remainder of the 2009-10 season.

### Weekly Laboratory-Confirmed Influenza-Associated Hospitalizations and Deaths Reported to AHDRA, National Summary, August 30, 2009 – April 3, 2010



**Antigenic Characterization:** CDC has antigenically characterized two seasonal influenza A (H1N1), 13 influenza A (H3N2), 23 influenza B, and 1,679 2009 influenza A (H1N1) viruses collected since September 1, 2009.

Both seasonal influenza A (H1N1) viruses tested were related to the influenza A (H1N1) component of the 2009-10 Northern Hemisphere influenza vaccine (A/Brisbane/59/2007).

The 13 influenza A (H3N2) viruses tested showed reduced titers with antisera produced against A/Brisbane/10/2007, the 2009-2010 Northern Hemisphere influenza A (H3N2) vaccine component, and were antigenically related to A/Perth/16/2009, the WHO recommended influenza A (H3N2) component of the 2010 Southern Hemisphere and 2010-11 Northern Hemisphere vaccine formulations.

Influenza B viruses currently circulating globally can be divided into two distinct lineages represented by the B/Yamagata/16/88 and B/Victoria/02/87 viruses. The influenza B component of the 2009-10 and 2010-11 Northern Hemisphere vaccines belongs to the B/Victoria lineage. The 23 influenza B viruses tested belong to the B/Victoria lineage and are related to the influenza vaccine component for the 2009-10 and 2010-11 Northern Hemisphere influenza B vaccine strain (B/Brisbane/60/2008).

One thousand six hundred seventy-four (99.7%) of 1,679 2009 influenza A (H1N1) viruses tested are related to the A/California/07/2009 (H1N1) reference virus selected by WHO as the 2009 H1N1 vaccine virus, and as a component in the 2010-11 Northern Hemisphere vaccine. Five viruses (0.3%) tested showed reduced titers with antiserum produced against A/California/07/2009.

Annual influenza vaccination is expected to provide the best protection against those virus strains that are related to the vaccine strains, but limited to no protection may be expected when the vaccine and circulating virus strains are so different as to be from different lineages. Antigenic characterization of 2009 influenza A (H1N1) viruses indicates that these viruses are only distantly related antigenically and genetically to seasonal influenza A (H1N1) viruses, suggesting that little to no protection would be expected from vaccination with seasonal influenza vaccine.

**Composition of the 2010-11 Influenza Vaccine:** WHO has recommended vaccine strains for the 2010-11 Northern Hemisphere trivalent influenza vaccine, and FDA has made the same recommendations for the U.S. influenza vaccine. Both agencies recommend that the vaccine contain A/California/7/2009-like (2009 H1N1), A/Perth/16/2009-like (H3N2), and B/Brisbane/60/2008-like (B/Victoria lineage) viruses. A seasonal influenza A (H1N1) component is not included in the 2010-11 formulation, and the A (H3N2) component has been changed from the 2009-10 Northern Hemisphere vaccine formulation. This recommendation was based on surveillance data related to epidemiology and antigenic characteristics, serological responses to 2009-10 trivalent seasonal and 2009 H1N1 monovalent vaccines, and the availability of candidate strains and reagents.

**Antiviral Resistance:** Since September 1, 2009, one seasonal influenza A (H1N1), 13 influenza A (H3N2), 23 influenza B, and 1,688 2009 influenza A (H1N1) virus isolates have been tested for resistance to the neuraminidase inhibitors (oseltamivir and zanamivir), and 2,735 2009 influenza A (H1N1) original clinical samples were tested for a single known mutation in the virus that confers oseltamivir resistance. In addition, one seasonal influenza A (H1N1), 13 influenza A (H3N2), and 1,669 2009 influenza A (H1N1) virus isolates have been tested for resistance to the adamantanes (amantadine and rimantadine). The results of antiviral resistance testing performed on these viruses are summarized in the table below. Additional laboratories perform antiviral testing and report their results to CDC, and positive results from that testing are included in the footnote.

**Antiviral Resistance Testing Results on Samples Collected Since September 1, 2009.**

	Viruses tested (n)	Resistant Viruses, Number (%)	Viruses tested (n)	Resistant Viruses, Number (%)	Isolates tested (n)	Resistant Viruses, Number (%)
		Oseltamivir		Zanamivir		Adamantanes
<b>Seasonal Influenza A (H1N1)</b>	1	1 (100.0)	0	0 (0)	1	0 (0)
<b>Influenza A (H3N2)</b>	13	0 (0)	0	0 (0)	13	13 (100.0)
<b>Influenza B</b>	23	0 (0)	0	0 (0)	N/A*	N/A*
<b>2009 Influenza A (H1N1)</b>	4,423	52 <sup>†‡</sup> (1.2)	1,617	0 (0)	1,669	1,665 (99.8)

\*The adamantanes (amantadine and rimantadine) are not effective against influenza B viruses.

<sup>†</sup>Two screening tools were used to determine oseltamivir resistance: sequence analysis of viral genes and a neuraminidase inhibition assay.

<sup>‡</sup>Additional laboratories perform antiviral resistance testing and report their results to CDC. Three additional oseltamivir resistant 2009 influenza A (H1N1) virus has been identified by these laboratories since September 1, 2009, bringing the total number to 55.

All subtyped influenza A viruses reported during week 13 were 2009 influenza A (H1N1) viruses, and nearly all of 2009 H1N1 viruses tested since April 2009 have been resistant to the adamantanes (amantadine and rimantadine).

Antiviral treatment with oseltamivir or zanamivir is recommended for all patients with confirmed or suspected influenza virus infection who are hospitalized, are at higher risk for influenza complications, or who have lower respiratory tract or progressive disease. Additional information on antiviral recommendations for treatment and chemoprophylaxis of influenza virus infection is available at <http://www.cdc.gov/H1N1flu/recommendations.htm>.

2009 influenza A (H1N1) viruses were tested for oseltamivir resistance by a neuraminidase inhibition assay and/or detection of genetic sequence mutation, depending on the type of specimen tested. Original clinical samples were examined for a single known mutation in the virus that confers oseltamivir resistance in currently circulating seasonal influenza A (H1N1) viruses, while influenza virus isolates were tested using a neuraminidase inhibition assay that determines the presence or absence of neuraminidase inhibitor resistance, followed by neuraminidase gene sequence analysis of resistant viruses.

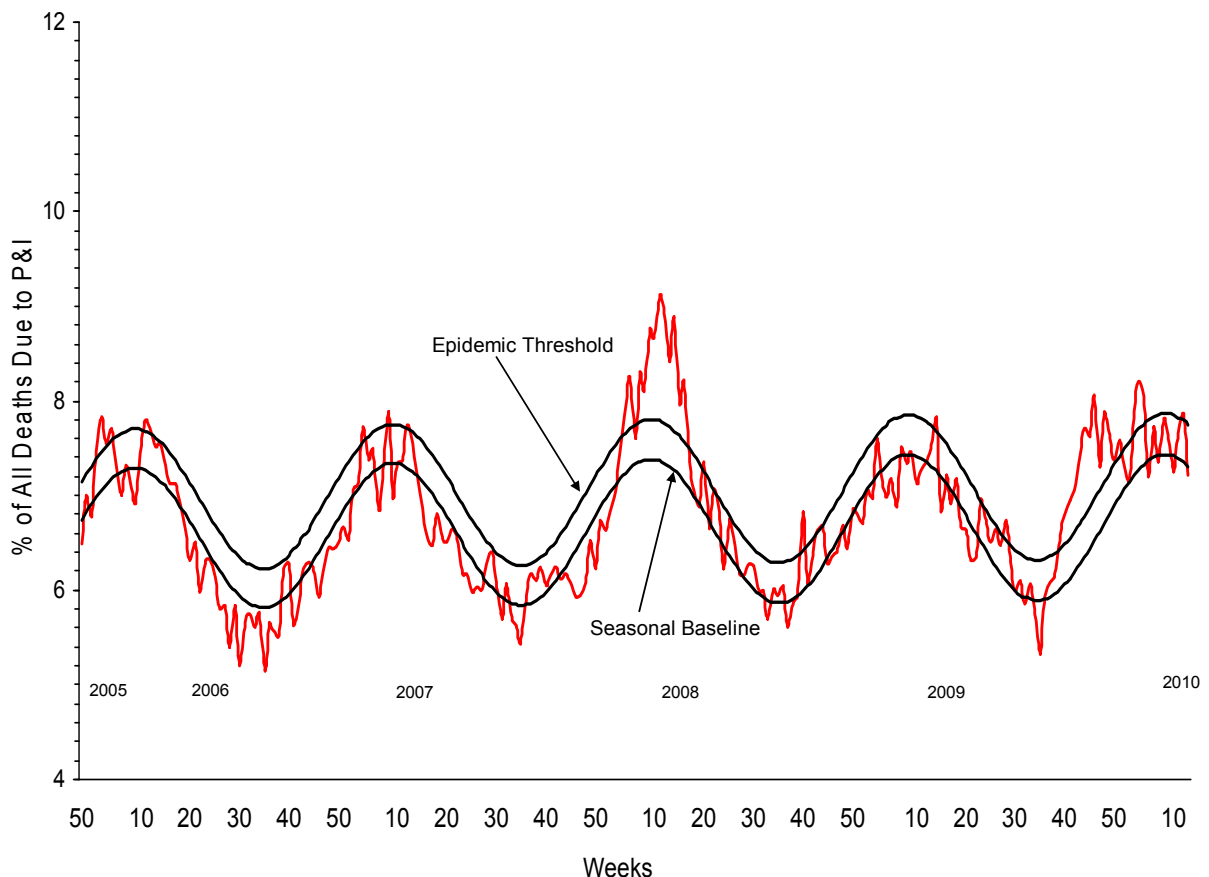
The majority of 2009 influenza A (H1N1) viruses are susceptible to the neuraminidase inhibitor antiviral medication oseltamivir; however, rare sporadic cases of oseltamivir resistant 2009 influenza A (H1N1) viruses have been detected worldwide. A total of 64 cases of oseltamivir resistant 2009 influenza A (H1N1) viruses have been identified in the United States since April 2009. No new cases have been identified since last week. Fifty-five of these specimens were collected after September 1, 2009. The proportion of oseltamivir-resistant 2009 H1N1 viruses does

not represent the prevalence of oseltamivir-resistant 2009 H1N1 in the United States. Most cases were tested because drug resistance was suspected. All tested viruses retained their sensitivity to the neuraminidase inhibitor zanamivir. Of the 64 total cases identified since April 2009, 52 patients had documented exposure to oseltamivir through either treatment or chemoprophylaxis, eight patients are under investigation to determine exposure to oseltamivir, three patients had no documented oseltamivir exposure, and in one patient, exposure cannot be determined. Occasional development of oseltamivir resistance during treatment or prophylaxis is not unexpected. Enhanced surveillance, an increased availability of testing performed at CDC, and an increasing number of public health and other clinical laboratories performing antiviral resistance testing increase the number of cases of oseltamivir resistant 2009 influenza A (H1N1) viruses detected. All cases are investigated to assess the spread of resistant strains in the community.

To prevent the spread of antiviral resistant virus strains, CDC reminds clinicians and the public of the need to continue hand and cough hygiene measures for the duration of any symptoms of influenza, even while taking antiviral medications  
<http://www.cdc.gov/mmwr/preview/mmwrhtml/mm5832a3.htm>.

**Pneumonia and Influenza (P&I) Mortality Surveillance:** During week 13, 7.2% of all deaths reported through the 122-Cities Mortality Reporting System were due to P&I. This percentage was below the epidemic threshold of 7.7% for week 13.

Pneumonia and Influenza Mortality for 122 U.S. Cities  
 Week ending 4/3/2010



**Influenza-Associated Pediatric Mortality:** One pediatric death associated with laboratory confirmed influenza A was reported to CDC during week 13 (Florida); the subtype was undetermined. This death occurred during week 8 (the week ending February 27, 2010).

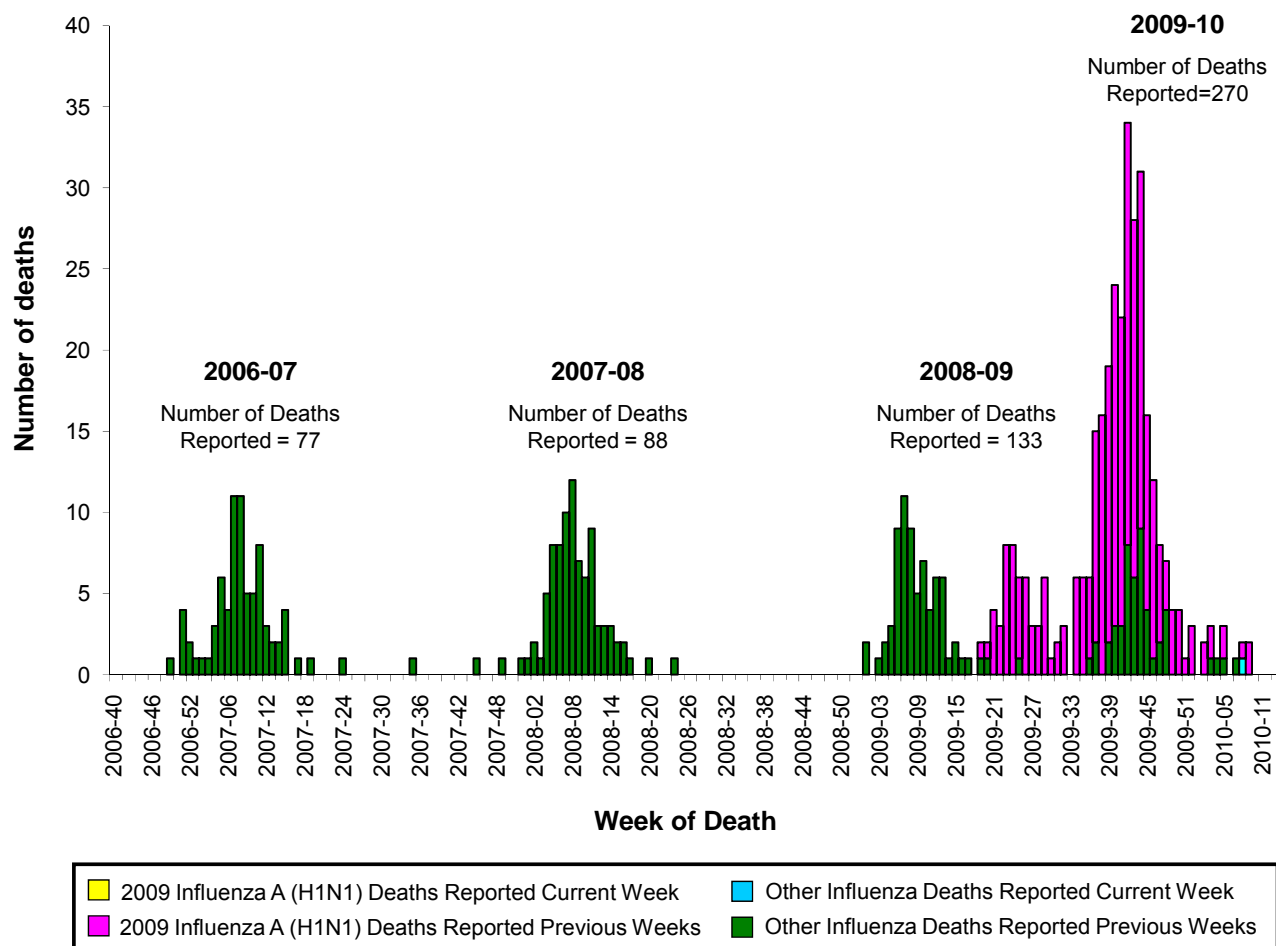
Since August 30, 2009, CDC has received 270 reports of influenza-associated pediatric deaths that occurred during the current influenza season (48 deaths in children less than 2 years old, 30 deaths in children 2-4 years old, 101 deaths in children 5-11 years old, and 91 deaths in children 12-17 years old). Two hundred twenty (81%) of the 270 deaths were due to 2009 influenza A (H1N1) virus infections, 49 were associated with an influenza A virus for which the subtype is undetermined, and one was associated with an influenza B virus infection. A total of 280 deaths in children associated with 2009 influenza A (H1N1) virus infection have been reported to CDC.

Among the 270 deaths in children, 144 children had specimens collected for bacterial culture from normally sterile sites and 49 (34.0%) of the 144 were positive; *Streptococcus pneumoniae* was identified in 11 (22.4%) of the 49 children, and *Staphylococcus aureus* was identified in 14 (28.6%) of the 49 children. Four *S. aureus* isolates were sensitive to methicillin, nine were methicillin resistant, and one did not have sensitivity testing performed. Thirty-two (65.3%) of the 49 children with bacterial coinfections were five years of age or older, and 17 (34.7%) of the 49 children were 12 years of age or older.

**Laboratory-Confirmed Influenza-Associated Pediatric Deaths by Date and Type/Subtype of Influenza.**

Date	2009 H1N1 Influenza	Influenza A-Subtype Unknown	Seasonal Influenza	Total
<b>Number of Deaths REPORTED for Current Week – Week 13 (Week ending April 3, 2010)</b>	0	1	0	1
<b>Number of Deaths OCCURRED since August 30, 2009</b>	220	49	1	270
<b>Number of Deaths OCCURRED since April 26, 2009</b>	280	52	2	334

## Number of Influenza-Associated Pediatric Deaths by Week of Death: 2006-07 season to present



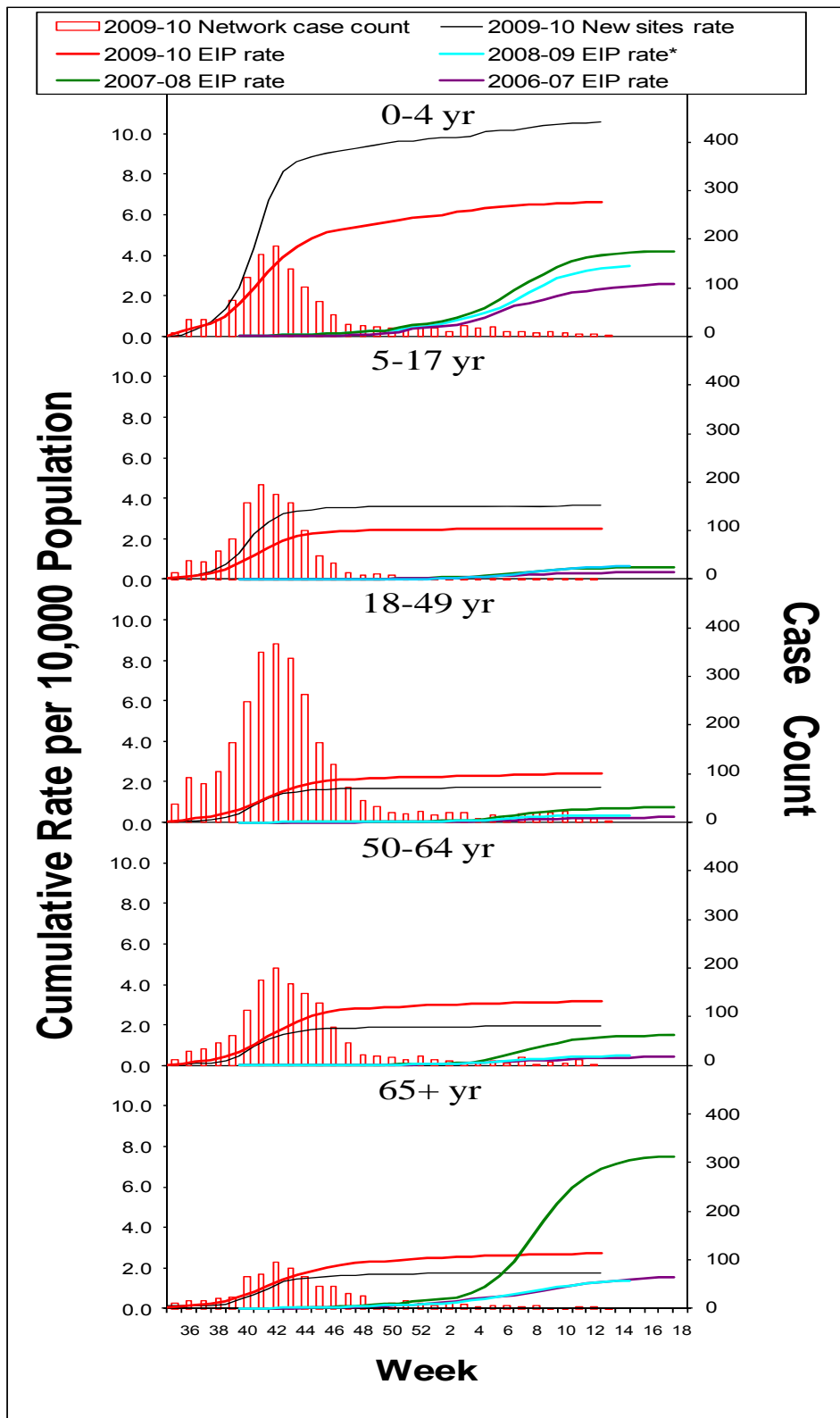
**Influenza-Associated Hospitalizations:** Laboratory-confirmed influenza-associated hospitalizations are monitored using a population-based surveillance network that includes the 10 Emerging Infections Program (EIP) sites (CA, CO, CT, GA, MD, MN, NM, NY, OR and TN) and six new sites (IA, ID, MI, ND, OK and SD).

During September 1, 2009 – April 3, 2010, the following preliminary laboratory-confirmed overall influenza associated hospitalization rates were reported by EIP and the new sites (*rates include influenza A, influenza B, and 2009 influenza A (H1N1)*):

Rates [EIP (new sites)] for children aged 0-4 years and 5-17 years were 6.6 (10.6) and 2.5 (3.6) per 10,000, respectively. Rates [EIP (new sites)] for adults aged 18-49 years, 50-64 years, and ≥ 65 years were 2.4 (1.7), 3.2 (2.0) and 2.7 (1.8) per 10,000, respectively.



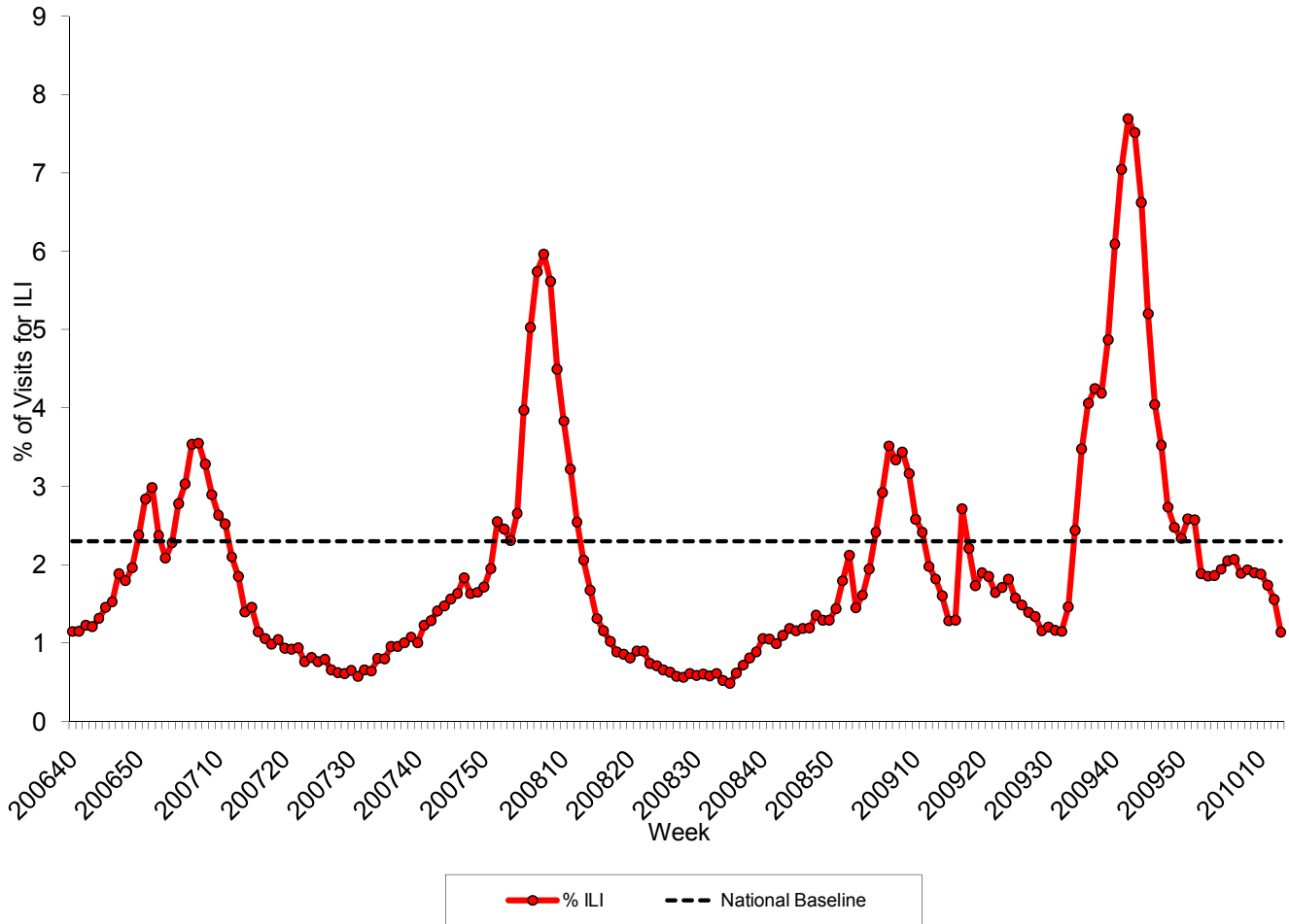
## EIP Influenza Laboratory-Confirmed Cumulative Hospitalization Rates, 2009-10 and Previous Three Seasons\*



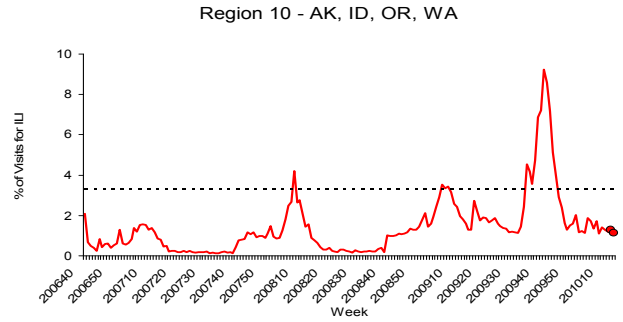
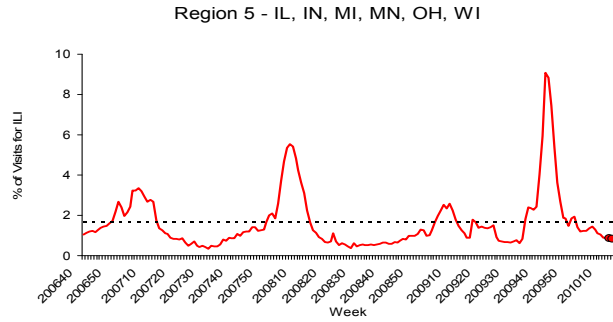
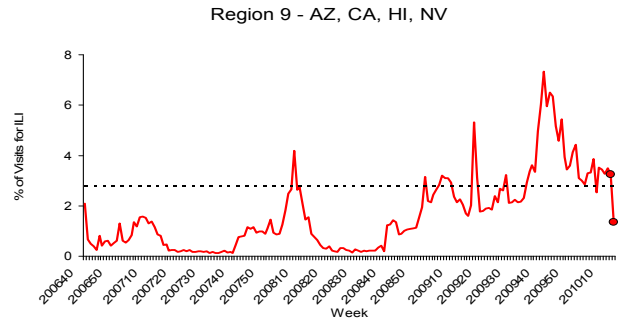
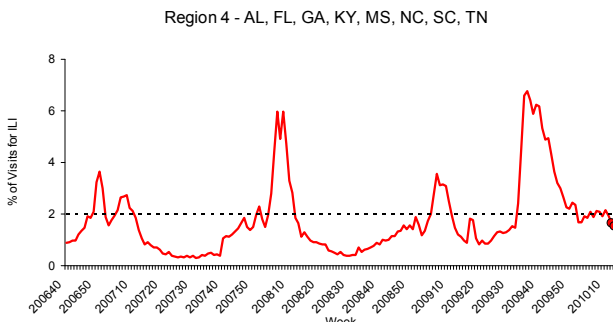
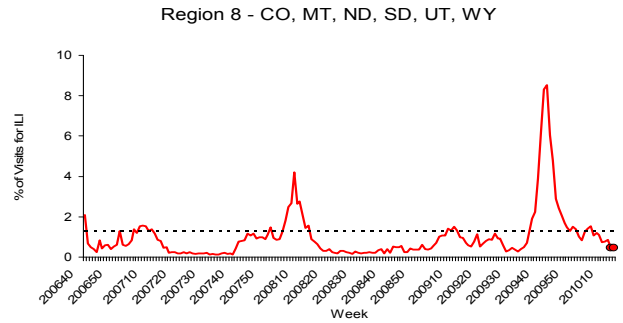
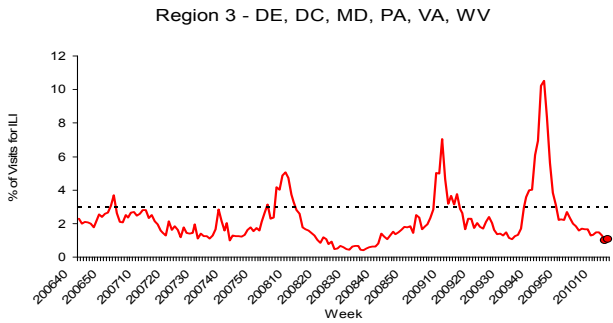
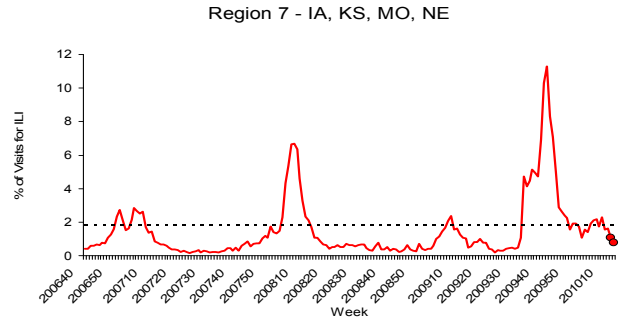
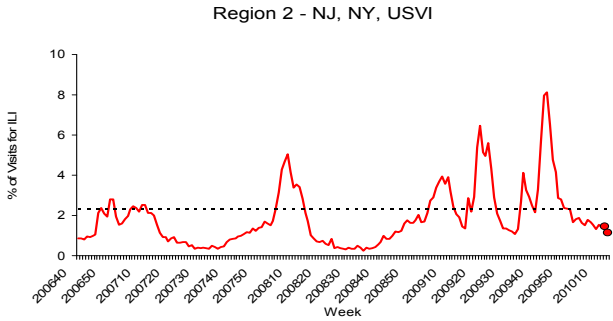
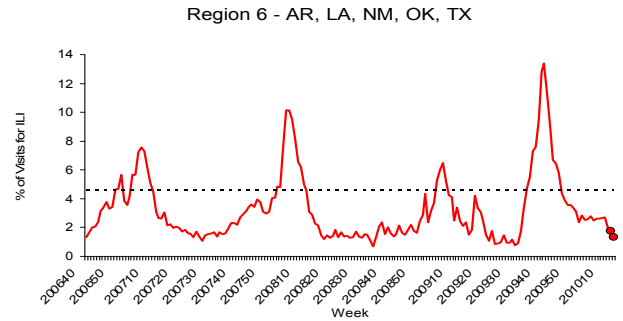
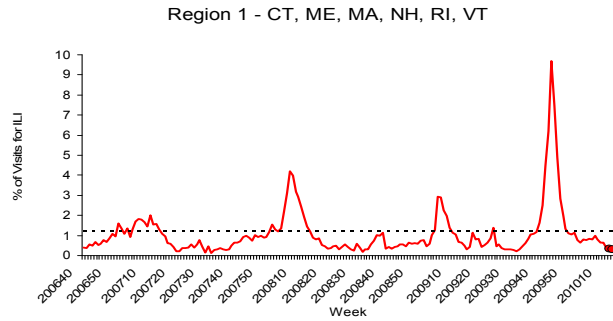
\* The 2008-09 EIP rate ended as of April 14, 2009 due to the onset of the 2009 H1N1 season.

**Outpatient Illness Surveillance:** Nationwide during week 13, 1.1% of patient visits reported through the U.S. Outpatient Influenza-like Illness Surveillance Network (ILINet) were due to influenza-like illness (ILI). This percentage is below the national baseline of 2.3%.

Percentage of Visits for Influenza-like Illness (ILI) Reported by the U.S. Outpatient Influenza-like Illness Surveillance Network (ILINet), Weekly National Summary, October 1, 2006 – April 3, 2010



On a regional level, the percentage of outpatient visits for ILI ranged from 0.3% to 1.4% during week 13. All 10 regions reported ILI below region-specific baseline levels. (Note: Use of the national baseline for regional ILI data or regional baselines for state-level data is not appropriate.)



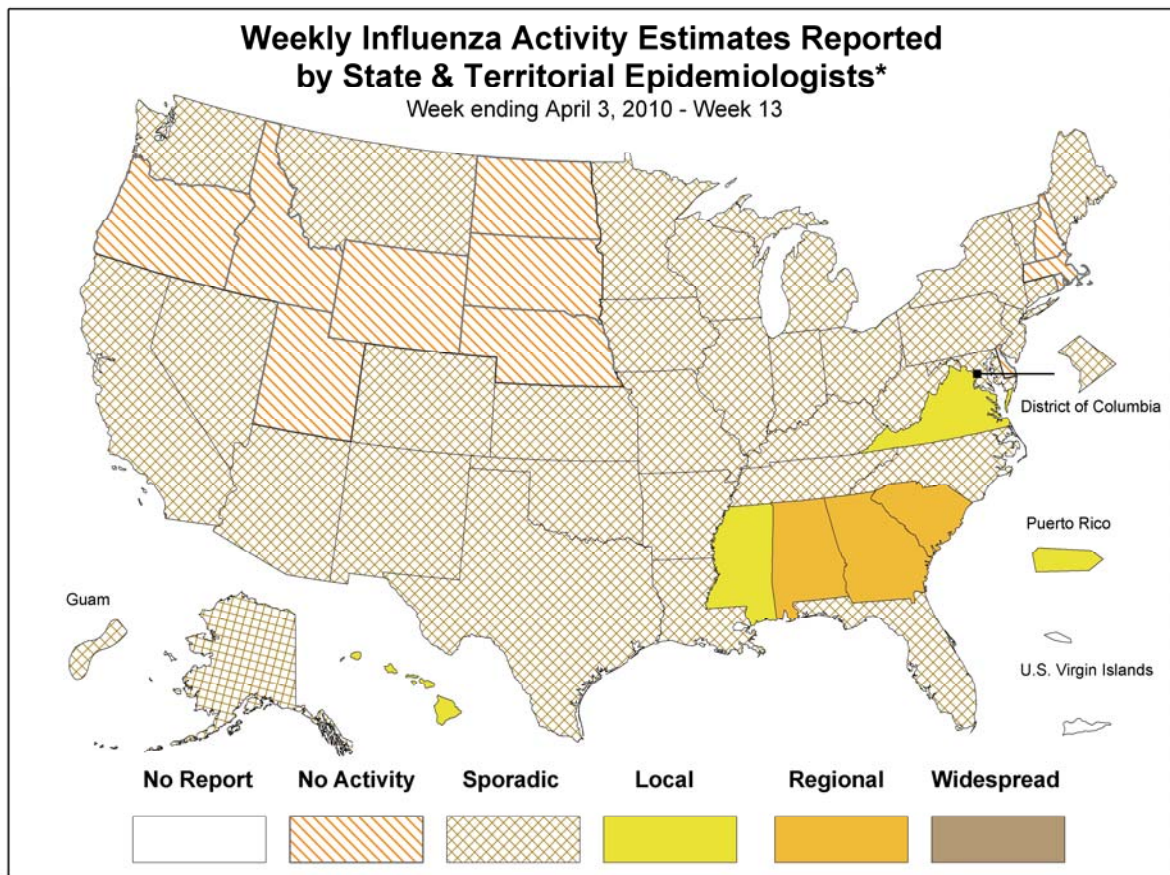
NOTE: Scales differ between regions

\*Use of the regional baselines for state data is not appropriate.

**Geographic Spread of Influenza as Assessed by State and Territorial Epidemiologists:** The influenza activity reported by state and territorial epidemiologists indicates geographic spread of both seasonal influenza and 2009 influenza A (H1N1) viruses and does not measure the severity of influenza activity.

During week 13, the following influenza activity was reported:

- No states reported widespread influenza activity.
- Regional influenza activity was reported by three states (Alabama, Georgia, and South Carolina).
- Local influenza activity was reported by Puerto Rico and three states (Hawaii, Mississippi, and Virginia).
- Sporadic influenza activity was reported by the District of Columbia, Guam, and 33 states (Alaska, Arizona, Arkansas, California, Colorado, Connecticut, Florida, Illinois, Indiana, Iowa, Kansas, Kentucky, Louisiana, Maine, Maryland, Michigan, Minnesota, Missouri, Montana, Nevada, New Jersey, New Mexico, New York, North Carolina, Ohio, Oklahoma, Pennsylvania, Tennessee, Texas, Vermont, Washington, West Virginia, and Wisconsin).
- Eleven states (Delaware, Idaho, Massachusetts, Nebraska, New Hampshire, North Dakota, Oregon, Rhode Island, South Dakota, Utah, and Wyoming) reported no influenza activity.
- The U.S. Virgin Islands did not report.



\* This map indicates geographic spread & does not measure the severity of influenza activity

A description of surveillance methods is available at: <http://www.cdc.gov/flu/weekly/fluactivity.htm>  
Report prepared: April 9, 2010.

**WHO Collaborating Laboratory Reports  
2009-10 Influenza Season  
Update: Friday, April 09, 2010  
Summary for All Regions**

CDC Week	No. of Reporting Laboratories	No. of Specimens Tested	No. (%) of Specimens Positive for Influenza	Positive specimens by Type/Subtype					
				A(H1)	A(H3)	AH1SWINE	AUNSUB	A-Unk	B
200935	139	14443	3006 ( 20.81 )	2	13	1884	16	1087	4
200936	139	16842	3782 ( 22.46 )	1	6	2294	8	1462	11
200937	137	18726	4347 ( 23.21 )	5	3	2617	10	1707	5
200938	135	19496	4632 ( 23.76 )	4	6	2857	24	1723	18
200939	136	20564	5762 ( 28.02 )	4	7	3847	24	1863	17
200940	135	24563	8203 ( 33.40 )	1	2	6121	17	2043	19
200941	137	29034	10875 ( 37.46 )	2	0	8627	17	2211	18
200942	137	31864	12137 ( 38.09 )	2	2	9734	27	2342	30
200943	136	27990	9807 ( 35.04 )	1	2	7738	38	2009	19
200944	134	24857	7599 ( 30.57 )	3	3	6080	21	1462	30
200945	138	21714	5814 ( 26.78 )	1	1	4625	22	1156	9
200946	138	18194	3471 ( 19.08 )	1	0	2711	21	725	13
200947	135	13199	1876 ( 14.21 )	1	3	1408	9	448	7
200948	134	12977	1334 ( 10.28 )	1	0	997	11	316	9
200949	135	11195	809 ( 7.23 )	1	3	610	7	185	3
200950	133	10473	667 ( 6.37 )	0	3	480	6	172	6
200951	131	8437	393 ( 4.66 )	3	0	251	1	135	3
200952	130	9454	429 ( 4.54 )	0	1	285	1	134	8
201001	126	9364	362 ( 3.87 )	0	0	264	3	90	5
201002	130	8452	392 ( 4.64 )	1	2	261	2	115	11
201003	128	8373	442 ( 5.28 )	0	1	317	2	119	3
201004	128	8343	386 ( 4.63 )	0	3	267	0	110	6
201005	127	8228	394 ( 4.79 )	0	0	289	0	101	4
201006	127	7935	347 ( 4.37 )	0	0	235	0	105	7
201007	127	8125	370 ( 4.55 )	0	0	255	1	108	6
201008	126	7702	417 ( 5.41 )	0	1	316	0	98	2
201009	123	7168	432 ( 6.03 )	0	0	338	0	92	2
201010	121	6869	433 ( 6.30 )	0	0	337	0	85	11
201011	112	5765	315 ( 5.46 )	0	1	237	0	75	2
201012	95	4532	144 ( 3.18 )	0	1	98	0	42	3
201013	70	2871	105 ( 3.66 )	0	0	69	0	34	2
<b>Totals</b>	3979	427749	89482 ( 20.92 )	34	64	66449	288	22354	293

**WHO Collaborating Laboratory Reports  
2009-2010 Influenza Season  
Update: Friday, April 09, 2010  
Summary by Region**

**HHS Region 1 (CT, ME, MA, NH, RI, VT)**

CDC Week	No. of Reporting Laboratories	No. of Specimens Tested	No. (%) of Specimens Positive for Influenza	Positive specimens by Type / Subtype					
				A(H1)	AH3	AH1SWINE	AUNSUB	AUNK	B
200935	10	460	12 ( 2.61 )	0	0	11	0	1	0
200936	10	489	28 ( 5.73 )	1	1	23	0	3	0
200937	10	678	48 ( 7.08 )	3	0	43	0	2	0
200938	10	758	45 ( 5.94 )	0	0	37	2	6	0
200939	10	759	48 ( 6.32 )	0	0	41	0	5	2
200940	10	780	50 ( 6.41 )	0	1	46	0	3	0
200941	10	917	176 ( 19.19 )	0	0	159	0	15	2
200942	10	1303	387 ( 29.70 )	0	0	350	1	33	3
200943	10	1681	622 ( 37.00 )	0	0	537	2	81	2
200944	10	1894	739 ( 39.02 )	0	0	639	3	97	0
200945	10	1773	687 ( 38.75 )	0	0	595	0	92	0
200946	10	1531	470 ( 30.70 )	0	0	400	2	67	1
200947	10	916	243 ( 26.53 )	0	0	207	1	35	0
200948	10	946	156 ( 16.49 )	0	0	133	3	20	0
200949	10	597	56 ( 9.38 )	0	0	50	0	6	0
200950	10	540	38 ( 7.04 )	0	0	34	0	4	0
200951	10	401	21 ( 5.24 )	0	0	17	0	4	0
200952	10	485	17 ( 3.51 )	0	0	17	0	0	0
201001	10	463	15 ( 3.24 )	0	0	13	0	2	0
201002	9	176	2 ( 1.14 )	0	0	2	0	0	0
201003	10	401	5 ( 1.25 )	0	0	3	0	2	0
201004	11	420	15 ( 3.57 )	0	2	10	0	2	1
201005	10	458	9 ( 1.97 )	0	0	6	0	3	0
201006	10	427	11 ( 2.58 )	0	0	6	0	5	0
201007	10	429	17 ( 3.96 )	0	0	11	0	6	0
201008	10	382	10 ( 2.62 )	0	0	4	0	6	0
201009	10	360	8 ( 2.22 )	0	0	6	0	2	0
201010	10	243	3 ( 1.23 )	0	0	2	0	1	0
201011	8	168	0 ( 0.00 )	0	0	0	0	0	0
201012	6	115	0 ( 0.00 )	0	0	0	0	0	0
201013	6	123	0 ( 0.00 )	0	0	0	0	0	0
<b>Totals</b>	<b>300</b>	<b>21073</b>	<b>3938 ( 18.69 )</b>	<b>4</b>	<b>4</b>	<b>3402</b>	<b>14</b>	<b>503</b>	<b>11</b>

**HHS Region 2 (NJ, NY)**

CDC Week	No. of Reporting Laboratories	No. of Specimens Tested	No. (%) of Specimens Positive for Influenza	Positive specimens by Type / Subtype					
				A(H1)	AH3	AH1SWINE	AUNSUB	AUNK	B
200935	12	398	16 ( 4.02 )	1	1	8	0	6	0
200936	12	481	27 ( 5.61 )	0	0	20	0	7	0
200937	13	647	29 ( 4.48 )	0	0	16	0	13	0

**WHO Collaborating Laboratory Reports  
2009-2010 Influenza Season  
Update: Friday, April 09, 2010  
Summary by Region**

**HHS Region 2 (NJ, NY)**

CDC Week	No. of Reporting Laboratories	No. of Specimens Tested	No. (%) of Specimens Positive for Influenza	Positive specimens by Type / Subtype					
				A(H1)	AH3	AH1SWINE	AUNSUB	AUNK	B
200938	12	700	17 ( 2.43 )	0	0	6	0	11	0
200939	12	697	17 ( 2.44 )	0	1	9	0	7	0
200940	12	1089	63 ( 5.79 )	0	1	33	0	26	3
200941	12	1201	123 ( 10.24 )	0	0	65	0	58	0
200942	13	1673	356 ( 21.28 )	1	0	159	0	196	0
200943	13	1932	615 ( 31.83 )	0	0	253	0	362	0
200944	11	2132	599 ( 28.10 )	3	0	272	0	321	3
200945	13	2260	650 ( 28.76 )	0	1	252	0	397	0
200946	13	2240	480 ( 21.43 )	0	0	208	0	271	1
200947	13	1669	274 ( 16.42 )	0	0	92	0	181	1
200948	13	1691	218 ( 12.89 )	0	0	94	0	124	0
200949	13	1372	140 ( 10.20 )	0	0	58	0	82	0
200950	13	1364	113 ( 8.28 )	0	0	50	0	63	0
200951	13	864	72 ( 8.33 )	3	0	27	0	42	0
200952	13	1359	85 ( 6.25 )	0	0	31	0	52	2
201001	13	1289	52 ( 4.03 )	0	0	20	0	32	0
201002	13	1216	45 ( 3.70 )	0	0	17	0	27	1
201003	13	1033	65 ( 6.29 )	0	0	32	0	33	0
201004	13	1020	55 ( 5.39 )	0	1	30	0	24	0
201005	12	954	33 ( 3.46 )	0	0	13	0	19	1
201006	12	894	21 ( 2.35 )	0	0	7	0	14	0
201007	12	802	20 ( 2.49 )	0	0	7	0	13	0
201008	12	751	11 ( 1.46 )	0	0	7	0	4	0
201009	11	527	11 ( 2.09 )	0	0	6	0	5	0
201010	11	464	5 ( 1.08 )	0	0	2	0	1	2
201011	9	401	5 ( 1.25 )	0	0	3	0	2	0
201012	10	452	3 ( 0.66 )	0	1	1	0	1	0
201013	9	321	3 ( 0.93 )	0	0	3	0	0	0
<b>Totals</b>	<b>376</b>	<b>33893</b>	<b>4223 ( 12.46 )</b>	<b>8</b>	<b>6</b>	<b>1801</b>	<b>0</b>	<b>2394</b>	<b>14</b>

**HHS Region 3 (DE, DC, MD, PA, VA, WV)**

CDC Week	No. of Reporting Laboratories	No. of Specimens Tested	No. (%) of Specimens Positive for Influenza	Positive specimens by Type / Subtype					
				A(H1)	AH3	AH1SWINE	AUNSUB	AUNK	B
200935	12	1073	131 ( 12.21 )	1	1	122	0	7	0
200936	12	1465	184 ( 12.56 )	0	1	169	0	14	0
200937	12	1646	271 ( 16.46 )	0	0	253	0	16	2
200938	12	1709	345 ( 20.19 )	0	3	294	6	38	4
200939	11	1474	509 ( 34.53 )	0	0	457	0	52	0
200940	11	1847	800 ( 43.31 )	0	0	693	2	105	0

**WHO Collaborating Laboratory Reports  
2009-2010 Influenza Season  
Update: Friday, April 09, 2010  
Summary by Region**

**HHS Region 3 (DE, DC, MD, PA, VA, WV)**

CDC Week	No. of Reporting Laboratories	No. of Specimens Tested	No. (%) of Specimens Positive for Influenza	Positive specimens by Type / Subtype					
				A(H1)	AH3	AH1SWINE	AUNSUB	AUNK	B
200941	12	3796	1703 ( 44.86 )	0	0	1544	3	155	1
200942	13	4892	2736 ( 55.93 )	0	0	2348	2	384	2
200943	12	4099	1995 ( 48.67 )	0	1	1680	4	307	3
200944	12	3266	1381 ( 42.28 )	0	0	1215	0	165	1
200945	13	2756	1240 ( 44.99 )	1	0	1135	3	101	0
200946	12	1865	426 ( 22.84 )	1	0	356	14	54	1
200947	12	1261	183 ( 14.51 )	0	0	150	5	28	0
200948	12	1053	63 ( 5.98 )	0	0	52	1	9	1
200949	12	1052	50 ( 4.75 )	0	1	39	5	4	1
200950	12	863	38 ( 4.40 )	0	2	31	3	2	0
200951	13	747	19 ( 2.54 )	0	0	18	0	1	0
200952	12	804	16 ( 1.99 )	0	0	14	0	2	0
201001	12	749	26 ( 3.47 )	0	0	22	0	4	0
201002	12	714	24 ( 3.36 )	0	1	21	0	0	2
201003	12	724	15 ( 2.07 )	0	0	14	0	1	0
201004	11	725	5 ( 0.69 )	0	0	5	0	0	0
201005	12	716	6 ( 0.84 )	0	0	6	0	0	0
201006	11	367	9 ( 2.45 )	0	0	9	0	0	0
201007	12	677	10 ( 1.48 )	0	0	10	0	0	0
201008	12	602	5 ( 0.83 )	0	0	5	0	0	0
201009	12	590	14 ( 2.37 )	0	0	14	0	0	0
201010	11	559	10 ( 1.79 )	0	0	9	0	1	0
201011	11	464	12 ( 2.59 )	0	1	8	0	3	0
201012	10	430	9 ( 2.09 )	0	0	9	0	0	0
201013	7	403	6 ( 1.49 )	0	0	6	0	0	0
<b>Totals</b>	<b>362</b>	<b>43388</b>	<b>12241 ( 28.21 )</b>	<b>3</b>	<b>11</b>	<b>10708</b>	<b>48</b>	<b>1453</b>	<b>18</b>

**HHS Region 4 (AL, FL, GA, KY, MS, NC, SC, TN)**

CDC Week	No. of Reporting Laboratories	No. of Specimens Tested	No. (%) of Specimens Positive for Influenza	Positive specimens by Type / Subtype					
				A(H1)	AH3	AH1SWINE	AUNSUB	AUNK	B
200935	25	4479	1115 ( 24.89 )	0	0	608	9	496	2
200936	25	4502	1224 ( 27.19 )	0	1	572	6	638	7
200937	24	3934	1055 ( 26.82 )	0	0	590	4	460	1
200938	25	3888	1087 ( 27.96 )	0	0	633	5	449	0
200939	25	4083	1211 ( 29.66 )	0	1	755	17	436	2
200940	24	4030	1189 ( 29.50 )	0	0	811	9	365	4
200941	25	3762	1094 ( 29.08 )	0	0	752	9	330	3
200942	25	4669	1015 ( 21.74 )	0	0	721	8	283	3
200943	25	3696	862 ( 23.32 )	0	0	625	8	227	2



**WHO Collaborating Laboratory Reports**  
**2009-2010 Influenza Season**  
**Update: Friday, April 09, 2010**  
**Summary by Region**

**HHS Region 4 (AL, FL, GA, KY, MS, NC, SC, TN)**

CDC Week	No. of Reporting Laboratories	No. of Specimens Tested	No. (%) of Specimens Positive for Influenza	Positive specimens by Type / Subtype					
				A(H1)	AH3	AH1SWINE	AUNSUB	AUNK	B
200944	23	3303	720 ( 21.80 )	0	2	554	9	142	13
200945	24	2922	511 ( 17.49 )	0	0	413	1	95	2
200946	26	2725	380 ( 13.94 )	0	0	289	2	82	7
200947	25	1947	183 ( 9.40 )	0	1	126	0	52	4
200948	25	2181	267 ( 12.24 )	0	0	205	3	53	6
200949	26	1954	156 ( 7.98 )	0	0	133	0	23	0
200950	25	1922	165 ( 8.58 )	0	1	124	0	36	4
200951	25	1563	88 ( 5.63 )	0	0	58	0	29	1
200952	25	1343	101 ( 7.52 )	0	0	72	1	25	3
201001	25	1518	106 ( 6.98 )	0	0	85	3	14	4
201002	26	1397	175 ( 12.53 )	0	0	119	0	52	4
201003	25	1289	188 ( 14.58 )	0	0	148	0	40	0
201004	24	1425	166 ( 11.65 )	0	0	132	0	33	1
201005	25	1337	183 ( 13.69 )	0	0	152	0	30	1
201006	25	1423	155 ( 10.89 )	0	0	114	0	38	3
201007	24	1342	175 ( 13.04 )	0	0	140	1	34	0
201008	23	1374	233 ( 16.96 )	0	1	189	0	42	1
201009	23	1370	197 ( 14.38 )	0	0	162	0	34	1
201010	24	1476	245 ( 16.60 )	0	0	199	0	39	7
201011	21	1289	198 ( 15.36 )	0	0	158	0	40	0
201012	18	927	75 ( 8.09 )	0	0	56	0	18	1
201013	12	466	35 ( 7.51 )	0	0	28	0	6	1
<b>Totals</b>	<b>742</b>	<b>73536</b>	<b>14554 ( 19.79 )</b>	<b>0</b>	<b>7</b>	<b>9723</b>	<b>95</b>	<b>4641</b>	<b>88</b>

**HHS Region 5 (IL, IN, MI, MN, OH, WI)**

CDC Week	No. of Reporting Laboratories	No. of Specimens Tested	No. (%) of Specimens Positive for Influenza	Positive specimens by Type / Subtype					
				A(H1)	AH3	AH1SWINE	AUNSUB	AUNK	B
200935	19	1172	240 ( 20.48 )	0	8	168	6	58	0
200936	18	1548	276 ( 17.83 )	0	2	214	1	59	0
200937	18	1807	289 ( 15.99 )	0	2	222	1	64	0
200938	16	1841	399 ( 21.67 )	2	1	296	2	96	2
200939	16	2113	490 ( 23.19 )	3	4	357	3	122	1
200940	16	2367	836 ( 35.32 )	0	0	693	4	138	1
200941	16	3266	1598 ( 48.93 )	0	0	1435	0	161	2
200942	14	4048	2094 ( 51.73 )	1	2	1763	6	315	7
200943	13	3599	1716 ( 47.68 )	1	1	1457	17	240	0
200944	15	2956	1124 ( 38.02 )	0	0	987	2	134	1
200945	14	2732	815 ( 29.83 )	0	0	721	2	91	1
200946	13	2165	528 ( 24.39 )	0	0	490	0	38	0

**WHO Collaborating Laboratory Reports  
2009-2010 Influenza Season  
Update: Friday, April 09, 2010  
Summary by Region**

**HHS Region 5 (IL, IN, MI, MN, OH, WI)**

CDC Week	No. of Reporting Laboratories	No. of Specimens Tested	No. (%) of Specimens Positive for Influenza	Positive specimens by Type / Subtype					
				A(H1)	AH3	AH1SWINE	AUNSUB	AUNK	B
200947	15	1566	284 ( 18.14 )	0	1	261	1	21	0
200948	13	1294	143 ( 11.05 )	0	0	131	0	12	0
200949	15	1137	79 ( 6.95 )	0	1	68	1	9	0
200950	12	1011	55 ( 5.44 )	0	0	50	0	5	0
200951	10	784	18 ( 2.30 )	0	0	17	0	1	0
200952	13	814	23 ( 2.83 )	0	1	22	0	0	0
201001	12	771	13 ( 1.69 )	0	0	13	0	0	0
201002	13	706	22 ( 3.12 )	1	1	16	0	4	0
201003	12	682	11 ( 1.61 )	0	1	7	0	2	1
201004	13	641	10 ( 1.56 )	0	0	9	0	1	0
201005	12	720	11 ( 1.53 )	0	0	10	0	1	0
201006	12	624	9 ( 1.44 )	0	0	8	0	1	0
201007	11	535	16 ( 2.99 )	0	0	11	0	2	3
201008	12	567	14 ( 2.47 )	0	0	13	0	1	0
201009	12	479	22 ( 4.59 )	0	0	22	0	0	0
201010	11	488	10 ( 2.05 )	0	0	10	0	0	0
201011	11	393	10 ( 2.54 )	0	0	9	0	1	0
201012	7	152	4 ( 2.63 )	0	0	3	0	1	0
201013	5	91	5 ( 5.49 )	0	0	3	0	2	0
<b>Totals</b>	<b>409</b>	<b>43069</b>	<b>11164 ( 25.92 )</b>	<b>8</b>	<b>25</b>	<b>9486</b>	<b>46</b>	<b>1580</b>	<b>19</b>

**HHS Region 6 (AR, LA, NM, OK, TX)**

CDC Week	No. of Reporting Laboratories	No. of Specimens Tested	No. (%) of Specimens Positive for Influenza	Positive specimens by Type / Subtype					
				A(H1)	AH3	AH1SWINE	AUNSUB	AUNK	B
200935	19	3210	754 ( 23.49 )	0	2	418	1	331	2
200936	19	3953	885 ( 22.39 )	0	0	371	1	512	1
200937	19	4634	1156 ( 24.95 )	0	1	358	0	797	0
200938	19	5055	1215 ( 24.04 )	0	0	375	1	832	7
200939	19	4603	1022 ( 22.20 )	0	0	335	0	684	3
200940	20	4688	1205 ( 25.70 )	0	0	646	0	556	3
200941	19	4158	1035 ( 24.89 )	1	0	557	0	477	0
200942	19	3873	816 ( 21.07 )	0	0	496	2	312	6
200943	19	3295	512 ( 15.54 )	0	0	318	3	187	4
200944	20	2671	385 ( 14.41 )	0	0	244	1	133	7
200945	21	2336	237 ( 10.15 )	0	0	159	1	75	2
200946	21	2351	155 ( 6.59 )	0	0	87	1	65	2
200947	20	1777	62 ( 3.49 )	0	0	39	1	21	1
200948	19	1788	72 ( 4.03 )	0	0	44	1	25	2
200949	20	1540	36 ( 2.34 )	1	0	20	1	13	1

**WHO Collaborating Laboratory Reports  
2009-2010 Influenza Season  
Update: Friday, April 09, 2010  
Summary by Region**

**HHS Region 6 (AR, LA, NM, OK, TX)**

CDC Week	No. of Reporting Laboratories	No. of Specimens Tested	No. (%) of Specimens Positive for Influenza	Positive specimens by Type / Subtype					
				A(H1)	AH3	AH1SWINE	AUNSUB	AUNK	B
200950	19	1603	50 ( 3.12 )	0	0	28	2	19	1
200951	19	1522	49 ( 3.22 )	0	0	28	1	20	0
200952	17	1648	54 ( 3.28 )	0	0	22	0	30	2
201001	16	1555	48 ( 3.09 )	0	0	29	0	18	1
201002	17	1440	60 ( 4.17 )	0	0	42	1	15	2
201003	16	1498	95 ( 6.34 )	0	0	68	1	26	0
201004	15	1456	80 ( 5.49 )	0	0	51	0	28	1
201005	15	1406	86 ( 6.12 )	0	0	62	0	23	1
201006	16	1371	71 ( 5.18 )	0	0	45	0	25	1
201007	16	1537	80 ( 5.20 )	0	0	45	0	35	0
201008	15	1455	98 ( 6.74 )	0	0	67	0	31	0
201009	15	1358	129 ( 9.50 )	0	0	92	0	37	0
201010	14	1356	93 ( 6.86 )	0	0	67	0	24	2
201011	14	1064	57 ( 5.36 )	0	0	36	0	19	2
201012	11	754	28 ( 3.71 )	0	0	13	0	14	1
201013	8	393	27 ( 6.87 )	0	0	7	0	19	1
<b>Totals</b>	<b>536</b>	<b>71348</b>	<b>10652 ( 14.93 )</b>	<b>2</b>	<b>3</b>	<b>5169</b>	<b>19</b>	<b>5403</b>	<b>56</b>

**HHS Region 7 (IA, KS, MO, NE)**

CDC Week	No. of Reporting Laboratories	No. of Specimens Tested	No. (%) of Specimens Positive for Influenza	Positive specimens by Type / Subtype					
				A(H1)	AH3	AH1SWINE	AUNSUB	AUNK	B
200935	7	407	112 ( 27.52 )	0	0	84	0	28	0
200936	9	423	118 ( 27.90 )	0	0	101	0	17	0
200937	7	542	157 ( 28.97 )	1	0	116	2	38	0
200938	6	611	198 ( 32.41 )	1	1	168	1	27	0
200939	7	734	294 ( 40.05 )	1	0	243	0	50	0
200940	6	1052	527 ( 50.10 )	0	0	448	0	78	1
200941	7	1302	653 ( 50.15 )	0	0	506	0	147	0
200942	8	1478	750 ( 50.74 )	0	0	576	0	173	1
200943	8	1203	432 ( 35.91 )	0	0	314	0	117	1
200944	7	1120	286 ( 25.54 )	0	0	236	0	50	0
200945	7	860	155 ( 18.02 )	0	0	117	0	38	0
200946	7	705	79 ( 11.21 )	0	0	65	0	14	0
200947	6	512	44 ( 8.59 )	0	0	42	0	2	0
200948	7	532	24 ( 4.51 )	0	0	18	0	6	0
200949	5	463	12 ( 2.59 )	0	0	10	0	2	0
200950	7	489	19 ( 3.89 )	0	0	15	0	4	0
200951	6	397	13 ( 3.27 )	0	0	11	0	2	0
200952	5	397	14 ( 3.53 )	0	0	12	0	2	0

**WHO Collaborating Laboratory Reports  
2009-2010 Influenza Season  
Update: Friday, April 09, 2010  
Summary by Region**

**HHS Region 7 (IA, KS, MO, NE)**

CDC Week	No. of Reporting Laboratories	No. of Specimens Tested	No. (%) of Specimens Positive for Influenza	Positive specimens by Type / Subtype					
				A(H1)	AH3	AH1SWINE	AUNSUB	AUNK	B
201001	5	382	8 ( 2.09 )	0	0	6	0	2	0
201002	6	378	11 ( 2.91 )	0	0	9	0	2	0
201003	6	432	12 ( 2.78 )	0	0	10	0	2	0
201004	6	429	15 ( 3.50 )	0	0	9	0	5	1
201005	7	553	17 ( 3.07 )	0	0	14	0	3	0
201006	6	486	21 ( 4.32 )	0	0	14	0	4	3
201007	6	529	27 ( 5.10 )	0	0	21	0	4	2
201008	7	443	22 ( 4.97 )	0	0	19	0	3	0
201009	6	474	32 ( 6.75 )	0	0	28	0	4	0
201010	6	452	38 ( 8.41 )	0	0	27	0	11	0
201011	6	388	23 ( 5.93 )	0	0	16	0	7	0
201012	5	385	15 ( 3.90 )	0	0	11	0	4	0
201013	5	324	16 ( 4.94 )	0	0	15	0	1	0
<b>Totals</b>	<b>199</b>	<b>18882</b>	<b>4144 ( 21.95 )</b>	<b>3</b>	<b>1</b>	<b>3281</b>	<b>3</b>	<b>847</b>	<b>9</b>

**HHS Region 8 (CO, MT, ND, SD, UT, WY)**

CDC Week	No. of Reporting Laboratories	No. of Specimens Tested	No. (%) of Specimens Positive for Influenza	Positive specimens by Type / Subtype					
				A(H1)	AH3	AH1SWINE	AUNSUB	AUNK	B
200935	16	1629	222 ( 13.63 )	0	1	104	0	117	0
200936	15	1970	421 ( 21.37 )	0	0	253	0	165	3
200937	15	2546	560 ( 22.00 )	1	0	270	0	288	1
200938	16	2611	538 ( 20.61 )	1	0	328	0	205	4
200939	16	3193	1069 ( 33.48 )	0	0	637	0	424	8
200940	16	4988	1872 ( 37.53 )	0	0	1210	0	656	6
200941	16	6543	2682 ( 40.99 )	0	0	1956	0	718	8
200942	16	5863	2346 ( 40.01 )	0	0	1856	0	482	8
200943	16	4473	1562 ( 34.92 )	0	0	1233	0	322	7
200944	16	3711	1069 ( 28.81 )	0	0	841	0	224	4
200945	16	2698	574 ( 21.28 )	0	0	485	0	87	2
200946	15	1909	265 ( 13.88 )	0	0	228	0	36	1
200947	15	1468	179 ( 12.19 )	1	1	128	0	49	0
200948	15	1359	118 ( 8.68 )	1	0	87	0	30	0
200949	15	1249	82 ( 6.57 )	0	0	61	0	21	0
200950	15	1158	52 ( 4.49 )	0	0	39	0	12	1
200951	15	974	30 ( 3.08 )	0	0	19	0	11	0
200952	16	1135	40 ( 3.52 )	0	0	29	0	10	1
201001	14	1102	15 ( 1.36 )	0	0	12	0	3	0
201002	15	1087	22 ( 2.02 )	0	0	13	0	9	0
201003	14	1049	23 ( 2.19 )	0	0	13	0	10	0

**WHO Collaborating Laboratory Reports  
2009-2010 Influenza Season  
Update: Friday, April 09, 2010  
Summary by Region**

**HHS Region 8 (CO, MT, ND, SD, UT, WY)**

CDC Week	No. of Reporting Laboratories	No. of Specimens Tested	No. (%) of Specimens Positive for Influenza	Positive specimens by Type / Subtype					
				A(H1)	AH3	AH1SWINE	AUNSUB	AUNK	B
201004	15	962	19 ( 1.98 )	0	0	8	0	10	1
201005	15	1043	21 ( 2.01 )	0	0	8	0	12	1
201006	15	1034	18 ( 1.74 )	0	0	8	0	10	0
201007	16	1086	10 ( 0.92 )	0	0	1	0	9	0
201008	15	1008	5 ( 0.50 )	0	0	3	0	2	0
201009	15	996	8 ( 0.80 )	0	0	3	0	5	0
201010	15	901	16 ( 1.78 )	0	0	13	0	3	0
201011	14	740	7 ( 0.95 )	0	0	5	0	2	0
201012	13	694	9 ( 1.30 )	0	0	5	0	4	0
201013	10	272	6 ( 2.21 )	0	0	2	0	4	0
<b>Totals</b>	<b>466</b>	<b>61451</b>	<b>13860 ( 22.55 )</b>	<b>4</b>	<b>2</b>	<b>9858</b>	<b>0</b>	<b>3940</b>	<b>56</b>

**HHS Region 9 (AZ, CA, HI, NV)**

CDC Week	No. of Reporting Laboratories	No. of Specimens Tested	No. (%) of Specimens Positive for Influenza	Positive specimens by Type / Subtype					
				A(H1)	AH3	AH1SWINE	AUNSUB	AUNK	B
200935	13	1187	314 ( 26.45 )	0	0	274	0	40	0
200936	13	1475	491 ( 33.29 )	0	0	453	0	38	0
200937	13	1573	590 ( 37.51 )	0	0	565	3	21	1
200938	13	1584	582 ( 36.74 )	0	1	531	6	43	1
200939	14	1959	803 ( 40.99 )	0	1	739	2	60	1
200940	14	2610	1263 ( 48.39 )	0	0	1174	2	86	1
200941	14	2756	1249 ( 45.32 )	0	0	1119	3	127	0
200942	13	2251	860 ( 38.21 )	0	0	716	6	138	0
200943	14	2233	763 ( 34.17 )	0	0	608	2	153	0
200944	14	2420	754 ( 31.16 )	0	1	577	5	170	1
200945	14	2177	512 ( 23.52 )	0	0	382	15	113	2
200946	14	1678	431 ( 25.69 )	0	0	379	0	52	0
200947	13	1394	308 ( 22.09 )	0	0	267	0	40	1
200948	14	1436	181 ( 12.60 )	0	0	153	3	25	0
200949	13	1262	135 ( 10.70 )	0	1	113	0	20	1
200950	14	1049	88 ( 8.39 )	0	0	69	0	19	0
200951	14	771	56 ( 7.26 )	0	0	30	0	24	2
200952	13	1029	44 ( 4.28 )	0	0	35	0	9	0
201001	13	1104	59 ( 5.34 )	0	0	46	0	13	0
201002	14	1000	28 ( 2.80 )	0	0	19	1	6	2
201003	14	869	17 ( 1.96 )	0	0	12	1	2	2
201004	14	854	17 ( 1.99 )	0	0	10	0	6	1
201005	14	925	26 ( 2.81 )	0	0	16	0	10	0
201006	14	889	30 ( 3.37 )	0	0	22	0	8	0

**WHO Collaborating Laboratory Reports**  
**2009-2010 Influenza Season**  
**Update: Friday, April 09, 2010**  
**Summary by Region**

**HHS Region 9 (AZ, CA, HI, NV)**

CDC Week	No. of Reporting Laboratories	No. of Specimens Tested	No. (%) of Specimens Positive for Influenza	Positive specimens by Type / Subtype					
				A(H1)	AH3	AH1SWINE	AUNSUB	AUNK	B
201007	14	769	15 ( 1.95 )	0	0	9	0	5	1
201008	14	754	17 ( 2.25 )	0	0	8	0	8	1
201009	13	617	5 ( 0.81 )	0	0	1	0	4	0
201010	13	591	11 ( 1.86 )	0	0	7	0	4	0
201011	12	523	1 ( 0.19 )	0	0	1	0	0	0
201012	10	336	0 ( 0.00 )	0	0	0	0	0	0
201013	5	242	1 ( 0.41 )	0	0	0	0	1	0
<b>Totals</b>	<b>408</b>	<b>40317</b>	<b>9651 ( 23.94 )</b>	<b>0</b>	<b>4</b>	<b>8335</b>	<b>49</b>	<b>1245</b>	<b>18</b>

**HHS Region 10 (AK, ID, OR, WA)**

CDC Week	No. of Reporting Laboratories	No. of Specimens Tested	No. (%) of Specimens Positive for Influenza	Positive specimens by Type / Subtype					
				A(H1)	AH3	AH1SWINE	AUNSUB	AUNK	B
200935	6	428	90 ( 21.03 )	0	0	87	0	3	0
200936	6	536	128 ( 23.88 )	0	1	118	0	9	0
200937	6	719	192 ( 26.70 )	0	0	184	0	8	0
200938	6	739	206 ( 27.88 )	0	0	189	1	16	0
200939	6	949	299 ( 31.51 )	0	0	274	2	23	0
200940	6	1112	398 ( 35.79 )	1	0	367	0	30	0
200941	6	1333	562 ( 42.16 )	1	0	534	2	23	2
200942	6	1814	777 ( 42.83 )	0	0	749	2	26	0
200943	6	1779	728 ( 40.92 )	0	0	713	2	13	0
200944	6	1384	542 ( 39.16 )	0	0	515	1	26	0
200945	6	1200	433 ( 36.08 )	0	0	366	0	67	0
200946	7	1025	257 ( 25.07 )	0	0	209	2	46	0
200947	6	689	116 ( 16.84 )	0	0	96	1	19	0
200948	6	697	92 ( 13.20 )	0	0	80	0	12	0
200949	6	569	63 ( 11.07 )	0	0	58	0	5	0
200950	6	474	49 ( 10.34 )	0	0	40	1	8	0
200951	6	414	27 ( 6.52 )	0	0	26	0	1	0
200952	6	440	35 ( 7.95 )	0	0	31	0	4	0
201001	6	431	20 ( 4.64 )	0	0	18	0	2	0
201002	5	338	3 ( 0.89 )	0	0	3	0	0	0
201003	6	396	11 ( 2.78 )	0	0	10	0	1	0
201004	6	411	4 ( 0.97 )	0	0	3	0	1	0
201005	5	116	2 ( 1.72 )	0	0	2	0	0	0
201006	6	420	2 ( 0.48 )	0	0	2	0	0	0
201007	6	419	0 ( 0.00 )	0	0	0	0	0	0
201008	6	366	2 ( 0.55 )	0	0	1	0	1	0
201009	6	397	6 ( 1.51 )	0	0	4	0	1	1

**WHO Collaborating Laboratory Reports  
2009-2010 Influenza Season  
Update: Friday, April 09, 2010  
Summary by Region**

**HHS Region 10 (AK, ID, OR, WA)**

<b>CDC Week</b>	<b>No. of Reporting Laboratories</b>	<b>No. of Specimens Tested</b>	<b>No. (%) of Specimens Positive for Influenza</b>	<b>Positive specimens by Type / Subtype</b>					
				<b>A(H1)</b>	<b>AH3</b>	<b>AH1SWINE</b>	<b>AUNSUB</b>	<b>AUNK</b>	<b>B</b>
201010	6	339	2 ( 0.59 )	0	0	1	0	1	0
201011	6	335	2 ( 0.60 )	0	0	1	0	1	0
201012	5	287	1 ( 0.35 )	0	0	0	0	0	1
201013	3	236	6 ( 2.54 )	0	0	5	0	1	0
<b>Totals</b>	181	20792	5055 ( 24.31 )	2	1	4686	14	348	4

**PNEUMONIA AND INFLUENZA MORTALITY**  
**(Reported from 122 U.S. Cities)**  
**For the Week Ending April 3, 2010**  
**(Week 13)**

YEAR	WEEK	% OF DEATHS	EXPECTED	THRESH.	TOTAL DEATHS	PNEUMONIA DEATHS	INFLUENZA DEATHS
2009	35	5.32	5.89	6.32	10254	538	8
2009	36	5.92	5.90	6.33	9182	539	5
2009	37	6.09	5.93	6.36	11250	676	9
2009	38	6.14	5.96	6.39	10848	659	7
2009	39	6.57	6.01	6.44	9912	639	12
2009	40	6.79	6.06	6.49	10766	701	30
2009	41	6.95	6.12	6.55	10175	683	24
2009	42	7.06	6.19	6.62	11068	734	47
2009	43	7.43	6.27	6.70	11205	782	50
2009	44	7.71	6.35	6.78	10902	776	65
2009	45	7.64	6.44	6.87	10664	753	62
2009	46	8.06	6.53	6.96	11489	854	72
2009	47	7.30	6.62	7.05	8444	581	35
2009	48	7.88	6.71	7.14	11969	894	49
2009	49	7.60	6.81	7.24	11901	864	40
2009	50	7.38	6.90	7.33	11484	817	31
2009	51	7.59	6.98	7.41	9143	674	20
2009	52	7.32	7.07	7.50	9503	684	12
2010	1	7.16	7.14	7.57	13393	940	19
2010	2	7.88	7.21	7.64	13019	1019	7
2010	3	8.20	7.27	7.70	12046	970	18
2010	4	8.04	7.32	7.75	12466	996	6
2010	5	7.19	7.37	7.80	12073	858	10
2010	6	7.73	7.40	7.83	11332	874	2
2010	7	7.35	7.42	7.85	11219	819	6
2010	8	7.82	7.43	7.86	11642	902	8
2010	9	7.64	7.43	7.86	12142	920	8
2010	10	7.25	7.42	7.85	12131	878	2
2010	11	7.65	7.39	7.82	11406	866	7
2010	12	7.85	7.36	7.79	11191	872	6
2010	13	7.21	7.31	7.74	11271	807	6



**U.S. Outpatient Influenza-like Illness Surveillance Network (ILINet)  
 2009-2010 Influenza Season  
 Update: Friday, April 09, 2010  
 Summary for All Regions**

**National Baseline: 2.3%**

<b>CDC Week</b>	<b>Number Reporting</b>	<b>Patient Visits</b>	<b>Total ILI</b>	<b>% Unweighted ILI</b>	<b>% Weighted ILI</b>
200935	1360	612017	20903	3.415	3.475
200936	1376	603412	22404	3.713	4.060
200937	1390	690184	26172	3.792	4.248
200938	1326	655273	24403	3.724	4.189
200939	1344	656827	27971	4.259	4.869
200940	2004	827590	46835	5.659	6.091
200941	2074	835645	55348	6.623	7.043
200942	2100	881582	66223	7.512	7.690
200943	2116	879642	64265	7.306	7.516
200944	2130	874874	54673	6.249	6.622
200945	2120	837103	41104	4.910	5.201
200946	2093	830787	31479	3.789	4.043
200947	2084	638626	22028	3.449	3.524
200948	2049	798617	21624	2.708	2.733
200949	2013	756903	18688	2.469	2.474
200950	1934	705965	16179	2.292	2.333
200951	1857	518446	13751	2.652	2.581
200952	1861	564027	15068	2.672	2.570
201001	1918	700466	13898	1.984	1.885
201002	1928	745424	13505	1.812	1.851
201003	1966	739000	14054	1.902	1.861
201004	1937	755541	14272	1.889	1.939
201005	1893	738586	15049	2.038	2.047
201006	1879	723675	14536	2.009	2.066
201007	1824	720188	13930	1.934	1.886
201008	1869	770577	15260	1.980	1.933
201009	1758	720994	13401	1.859	1.896
201010	1718	716424	13262	1.851	1.876
201011	1664	670977	11599	1.729	1.738
201012	1537	630672	9422	1.494	1.552
201013	1201	504256	6694	1.328	1.136
<b>Totals</b>	<b>56323</b>	<b>22304300</b>	<b>732801</b>	<b>3.285</b>	<b>3.460</b>

**U.S. Outpatient Influenza-like Illness Surveillance Network (ILINet)  
2009-2010 Influenza Season  
Update: Friday, April 09, 2010  
Summary by Region**

**HHS Region 1 (CT, ME, MA, NH, RI, VT) (Baseline: 1.2 %)**

<b>CDC Week</b>	<b>Number Reporting</b>	<b>Patient Visits</b>	<b>Total ILI</b>	<b>% Unweighted ILI</b>	<b>% Weighted ILI</b>
200935	96	64093	257	0.401	0.628
200936	96	53552	265	0.495	0.838
200937	99	73590	478	0.650	1.049
200938	101	76099	622	0.817	1.069
200939	102	73743	614	0.833	1.165
200940	133	40591	665	1.638	1.626
200941	145	38368	930	2.424	2.507
200942	146	41669	1883	4.519	4.468
200943	148	45199	3222	7.128	6.211
200944	152	47875	4703	9.823	9.688
200945	148	44846	3365	7.503	7.471
200946	155	45824	2273	4.960	4.903
200947	151	27742	861	3.104	2.828
200948	152	39966	775	1.939	1.970
200949	155	40778	595	1.459	1.324
200950	138	36092	434	1.202	1.104
200951	139	22963	270	1.176	1.058
200952	135	23827	267	1.121	1.127
201001	138	31688	276	0.871	0.782
201002	143	33169	235	0.708	0.633
201003	145	34582	276	0.798	0.789
201004	143	37935	299	0.788	0.772
201005	142	38091	350	0.919	0.844
201006	140	35925	328	0.913	0.812
201007	135	32202	361	1.121	0.997
201008	130	34078	276	0.810	0.807
201009	128	33741	223	0.661	0.637
201010	127	32265	209	0.648	0.639
201011	119	29108	135	0.464	0.370
201012	116	29943	109	0.364	0.342
201013	97	23372	68	0.291	0.314
<b>Totals</b>	4094	1262916	25311	2.029	2.001

**HHS Region 2 (NJ, NY) (Baseline: 2.3%)**

<b>CDC Week</b>	<b>Number Reporting</b>	<b>Patient Visits</b>	<b>Total ILI</b>	<b>% Unweighted ILI</b>	<b>% Weighted ILI</b>
200935	53	89896	1426	1.586	2.690
200936	59	91248	1775	1.945	4.108

**U.S. Outpatient Influenza-like Illness Surveillance Network (ILINet)  
2009-2010 Influenza Season  
Update: Friday, April 09, 2010  
Summary by Region**

**HHS Region 2 (NJ, NY) (Baseline: 2.3%)**

<b>CDC Week</b>	<b>Number Reporting</b>	<b>Patient Visits</b>	<b>Total ILI</b>	<b>% Unweighted ILI</b>	<b>% Weighted ILI</b>
200937	56	95006	1828	1.924	3.253
200938	56	100622	2133	2.120	2.920
200939	57	94551	1904	2.014	2.491
200940	186	117207	2397	2.045	2.151
200941	194	109925	2738	2.491	3.277
200942	206	125592	4776	3.803	5.726
200943	202	128798	6321	4.908	7.962
200944	206	126771	6258	4.936	8.125
200945	208	129536	6129	4.732	6.530
200946	199	127524	5006	3.926	4.754
200947	198	107569	4325	4.021	4.152
200948	198	121639	3842	3.159	2.868
200949	189	113225	3337	2.947	2.808
200950	191	112123	3168	2.825	2.365
200951	181	92139	2706	2.937	2.336
200952	183	97675	2999	3.070	2.313
201001	176	108312	2321	2.143	1.657
201002	177	109121	2255	2.067	1.819
201003	187	112561	2414	2.145	1.879
201004	182	109796	2065	1.881	1.644
201005	172	108955	2159	1.982	1.513
201006	170	105988	2195	2.071	1.777
201007	167	107618	2010	1.868	1.668
201008	171	101950	1700	1.667	1.543
201009	127	100406	1406	1.400	1.334
201010	110	99267	1470	1.481	1.531
201011	104	96899	1639	1.691	1.420
201012	94	96654	1541	1.594	1.449
201013	73	83983	1363	1.623	1.132
<b>Totals</b>	<b>4732</b>	<b>3322556</b>	<b>85206</b>	<b>2.637</b>	<b>3.227</b>

**HHS Region 3 (DE, DC, MD, PA, VA, WV) (Baseline: 3.0%)**

<b>CDC Week</b>	<b>Number Reporting</b>	<b>Patient Visits</b>	<b>Total ILI</b>	<b>% Unweighted ILI</b>	<b>% Weighted ILI</b>
200935	169	82952	1318	1.589	1.700
200936	176	91810	2159	2.352	2.949
200937	177	102794	2961	2.881	3.568
200938	170	95666	3349	3.501	3.983

**U.S. Outpatient Influenza-like Illness Surveillance Network (ILINet)  
2009-2010 Influenza Season  
Update: Friday, April 09, 2010  
Summary by Region**

**HHS Region 3 (DE, DC, MD, PA, VA, WV) (Baseline: 3.0%)**

<b>CDC Week</b>	<b>Number Reporting</b>	<b>Patient Visits</b>	<b>Total ILI</b>	<b>% Unweighted ILI</b>	<b>% Weighted ILI</b>
200939	172	88682	3578	4.035	4.021
200940	207	110344	6445	5.841	6.079
200941	226	127586	9291	7.282	6.943
200942	241	132505	15923	12.017	10.224
200943	244	133928	16471	12.298	10.533
200944	249	125306	11353	9.060	8.339
200945	251	119126	7469	6.270	5.625
200946	248	117276	4816	4.107	3.850
200947	244	86814	2873	3.309	3.091
200948	237	101691	2598	2.555	2.233
200949	236	101130	2505	2.477	2.257
200950	221	92424	2271	2.457	2.198
200951	216	80164	2164	2.699	2.710
200952	219	86118	2203	2.558	2.339
201001	225	97747	2136	2.185	1.996
201002	224	99586	1857	1.865	1.842
201003	225	99992	1813	1.813	1.579
201004	230	99732	1918	1.923	1.682
201005	216	90909	1633	1.796	1.645
201006	221	84650	1385	1.636	1.645
201007	216	94469	1383	1.464	1.278
201008	215	97580	1470	1.506	1.327
201009	207	97683	1606	1.644	1.484
201010	197	95578	1562	1.634	1.489
201011	196	97018	1420	1.464	1.297
201012	193	96014	1249	1.301	1.013
201013	163	84440	1142	1.352	1.074
<b>Totals</b>	<b>6631</b>	<b>3111714</b>	<b>116277</b>	<b>3.867</b>	<b>3.551</b>

**HHS Region 4 (AL, FL, GA, KY, MS, NC, SC, TN) (Baseline: 2.0%)**

<b>CDC Week</b>	<b>Number Reporting</b>	<b>Patient Visits</b>	<b>Total ILI</b>	<b>% Unweighted ILI</b>	<b>% Weighted ILI</b>
200935	344	130948	9723	7.425	6.595
200936	341	127745	9621	7.531	6.769
200937	356	151133	9874	6.533	6.401
200938	333	136135	8403	6.173	5.890
200939	345	135784	8320	6.127	6.225
200940	450	170236	10831	6.362	6.186

**U.S. Outpatient Influenza-like Illness Surveillance Network (ILINet)  
2009-2010 Influenza Season  
Update: Friday, April 09, 2010  
Summary by Region**

**HHS Region 4 (AL, FL, GA, KY, MS, NC, SC, TN) (Baseline: 2.0%)**

<b>CDC Week</b>	<b>Number Reporting</b>	<b>Patient Visits</b>	<b>Total ILI</b>	<b>% Unweighted ILI</b>	<b>% Weighted ILI</b>
200941	449	177520	9858	5.553	5.316
200942	446	176099	9157	5.200	4.884
200943	458	178984	9394	5.249	4.947
200944	445	174885	7836	4.481	4.331
200945	439	166670	6395	3.837	3.653
200946	442	167388	5596	3.343	3.202
200947	440	127553	4287	3.361	3.012
200948	430	161825	4546	2.809	2.655
200949	415	152910	3636	2.378	2.266
200950	401	143097	3525	2.463	2.208
200951	379	98322	2957	3.007	2.450
200952	399	112451	3245	2.886	2.356
201001	430	141067	2907	2.061	1.682
201002	416	150345	2746	1.826	1.678
201003	421	147676	3043	2.061	1.910
201004	415	151609	2966	1.956	1.860
201005	418	143150	3331	2.327	2.085
201006	426	154304	3402	2.205	1.887
201007	411	147807	3373	2.282	2.115
201008	434	174570	4273	2.448	2.082
201009	412	152373	3483	2.286	1.904
201010	419	149033	3836	2.574	2.143
201011	412	146099	3210	2.197	1.930
201012	379	136694	2483	1.816	1.653
201013	293	108707	1745	1.605	1.530
<b>Totals</b>	<b>12598</b>	<b>4593119</b>	<b>160685</b>	<b>3.658</b>	<b>3.232</b>

**HHS Region 5 (IL, IN, MI, MN, OH, WI) (Baseline: 1.7%)**

<b>CDC Week</b>	<b>Number Reporting</b>	<b>Patient Visits</b>	<b>Total ILI</b>	<b>% Unweighted ILI</b>	<b>% Weighted ILI</b>
200935	202	82442	1583	1.920	1.808
200936	211	84386	2150	2.548	2.403
200937	210	93464	2307	2.468	2.369
200938	209	91887	2279	2.480	2.273
200939	200	90291	2519	2.790	2.442
200940	281	112164	4968	4.429	4.041
200941	280	112101	7209	6.431	5.938
200942	285	120552	11234	9.319	9.072

**U.S. Outpatient Influenza-like Illness Surveillance Network (ILINet)  
2009-2010 Influenza Season  
Update: Friday, April 09, 2010  
Summary by Region**

**HHS Region 5 (IL, IN, MI, MN, OH, WI) (Baseline: 1.7%)**

<b>CDC Week</b>	<b>Number Reporting</b>	<b>Patient Visits</b>	<b>Total ILI</b>	<b>% Unweighted ILI</b>	<b>% Weighted ILI</b>
200943	292	121064	10959	9.052	8.832
200944	291	114373	8751	7.651	7.453
200945	295	112037	6313	5.635	5.378
200946	286	107387	4132	3.848	3.641
200947	279	78350	2310	2.948	2.664
200948	267	99551	1988	1.997	1.867
200949	263	91625	1880	2.052	1.853
200950	268	90950	1429	1.571	1.475
200951	250	64220	1453	2.263	1.845
200952	245	62841	1417	2.255	1.934
201001	246	82012	1356	1.653	1.402
201002	248	88269	1239	1.404	1.201
201003	263	91644	1323	1.444	1.244
201004	257	91847	1317	1.434	1.219
201005	260	93569	1440	1.539	1.354
201006	252	89873	1492	1.660	1.435
201007	246	89628	1402	1.564	1.306
201008	247	92479	1140	1.233	1.117
201009	232	88175	1020	1.157	1.048
201010	231	86618	865	0.999	0.899
201011	220	82309	853	1.036	0.884
201012	193	72910	687	0.942	0.855
201013	165	62454	585	0.937	0.839
<b>Totals</b>	<b>7674</b>	<b>2841472</b>	<b>87394</b>	<b>3.153</b>	<b>2.893</b>

**HHS Region 6 (AR, LA, NM, OK, TX) (Baseline: 4.6%)**

<b>CDC Week</b>	<b>Number Reporting</b>	<b>Patient Visits</b>	<b>Total ILI</b>	<b>% Unweighted ILI</b>	<b>% Weighted ILI</b>
200935	143	51585	3982	7.719	4.724
200936	135	49049	3365	6.860	5.503
200937	142	57754	5142	8.903	7.294
200938	132	41479	3445	8.305	7.604
200939	136	54235	5353	9.870	9.462
200940	209	76441	9134	11.949	12.841
200941	213	68479	9027	13.182	13.391
200942	205	71092	7782	10.946	11.378
200943	204	67191	5815	8.654	9.158
200944	219	84393	5604	6.640	6.698

**U.S. Outpatient Influenza-like Illness Surveillance Network (ILINet)  
2009-2010 Influenza Season  
Update: Friday, April 09, 2010  
Summary by Region**

**HHS Region 6 (AR, LA, NM, OK, TX) (Baseline: 4.6%)**

<b>CDC Week</b>	<b>Number Reporting</b>	<b>Patient Visits</b>	<b>Total ILI</b>	<b>% Unweighted ILI</b>	<b>% Weighted ILI</b>
200945	208	68576	4183	6.100	6.428
200946	203	63371	3502	5.526	5.816
200947	213	60034	2740	4.564	4.382
200948	207	74605	3018	4.045	3.910
200949	208	72499	2749	3.792	3.563
200950	194	56702	1985	3.501	3.546
200951	193	46743	1750	3.744	3.397
200952	188	58924	2051	3.481	3.126
201001	200	76224	2055	2.696	2.382
201002	203	82252	2469	3.002	2.847
201003	198	80721	2312	2.864	2.533
201004	190	76946	2165	2.814	2.587
201005	178	73830	2351	3.184	2.811
201006	183	76137	2093	2.749	2.479
201007	169	82914	2500	3.015	2.636
201008	183	87203	2768	3.174	2.616
201009	173	81772	2429	2.970	2.681
201010	171	82931	2417	2.914	2.689
201011	164	70970	1680	2.367	1.972
201012	166	66543	1387	2.084	1.747
201013	109	40214	636	1.582	1.321
<b>Totals</b>	<b>5639</b>	<b>2101809</b>	<b>103025</b>	<b>5.133</b>	<b>4.669</b>

**HHS Region 7 (IA, KS, MO, NE) (Baseline: 1.8%)**

<b>CDC Week</b>	<b>Number Reporting</b>	<b>Patient Visits</b>	<b>Total ILI</b>	<b>% Unweighted ILI</b>	<b>% Weighted ILI</b>
200935	55	13610	516	3.791	4.140
200936	60	15278	610	3.993	4.479
200937	56	13911	652	4.687	5.121
200938	60	17778	933	5.248	4.945
200939	61	19431	1002	5.157	4.729
200940	126	36433	2602	7.142	6.895
200941	127	37261	3877	10.405	10.295
200942	130	39132	4409	11.267	11.313
200943	133	37981	3135	8.254	8.298
200944	130	36378	2500	6.872	7.085
200945	127	35174	1701	4.836	4.989
200946	126	33321	977	2.932	2.880

**U.S. Outpatient Influenza-like Illness Surveillance Network (ILINet)  
2009-2010 Influenza Season  
Update: Friday, April 09, 2010  
Summary by Region**

**HHS Region 7 (IA, KS, MO, NE) (Baseline: 1.8%)**

<b>CDC Week</b>	<b>Number Reporting</b>	<b>Patient Visits</b>	<b>Total ILI</b>	<b>% Unweighted ILI</b>	<b>% Weighted ILI</b>
200947	130	26689	674	2.525	2.637
200948	131	34779	748	2.151	2.406
200949	128	29623	570	1.924	2.269
200950	125	29853	447	1.497	1.548
200951	124	19579	357	1.823	1.929
200952	117	21242	374	1.761	1.906
201001	117	23334	406	1.740	1.749
201002	124	30493	349	1.145	1.076
201003	127	30861	462	1.497	1.551
201004	122	30182	439	1.455	1.391
201005	123	32354	674	2.083	1.914
201006	122	31956	691	2.162	2.115
201007	122	32633	705	2.160	2.173
201008	124	33794	650	1.923	1.719
201009	122	32453	764	2.354	2.274
201010	116	31017	529	1.706	1.559
201011	113	26486	447	1.688	1.638
201012	105	26832	284	1.058	1.057
201013	87	20728	209	1.008	0.762
<b>Totals</b>	<b>3470</b>	<b>880576</b>	<b>32079</b>	<b>3.713</b>	<b>3.737</b>

**HHS Region 8 (CO, MT, ND, SD, UT, WY) (Baseline: 1.3%)**

<b>CDC Week</b>	<b>Number Reporting</b>	<b>Patient Visits</b>	<b>Total ILI</b>	<b>% Unweighted ILI</b>	<b>% Weighted ILI</b>
200935	73	37704	320	0.849	0.692
200936	70	34102	522	1.531	1.384
200937	70	37783	779	2.062	1.895
200938	70	37425	922	2.464	2.234
200939	70	39445	1570	3.980	3.886
200940	104	57408	3783	6.590	6.229
200941	112	58392	5133	8.791	8.301
200942	114	59815	5110	8.543	8.515
200943	109	50253	3074	6.117	6.036
200944	106	51755	2593	5.010	4.792
200945	105	52639	1537	2.920	2.869
200946	102	51637	1243	2.407	2.424
200947	105	41023	858	2.092	2.052
200948	103	52479	953	1.816	1.689



**U.S. Outpatient Influenza-like Illness Surveillance Network (ILINet)  
2009-2010 Influenza Season  
Update: Friday, April 09, 2010  
Summary by Region**

**HHS Region 8 (CO, MT, ND, SD, UT, WY) (Baseline: 1.3%)**

<b>CDC Week</b>	<b>Number Reporting</b>	<b>Patient Visits</b>	<b>Total ILI</b>	<b>% Unweighted ILI</b>	<b>% Weighted ILI</b>
200949	100	47016	751	1.597	1.461
200950	99	48377	685	1.416	1.295
200951	84	29879	432	1.446	1.488
200952	92	34473	531	1.540	1.369
201001	91	47631	534	1.121	1.009
201002	94	46784	407	0.870	0.826
201003	96	48439	660	1.363	1.263
201004	96	52203	819	1.569	1.420
201005	92	51397	760	1.479	1.525
201006	86	46957	528	1.124	1.085
201007	73	40236	404	1.004	1.191
201008	90	50702	563	1.110	1.096
201009	88	51398	399	0.776	0.750
201010	89	48838	406	0.831	0.762
201011	85	43103	392	0.909	0.869
201012	75	37157	163	0.439	0.474
201013	61	32029	135	0.421	0.473
<b>Totals</b>	<b>2804</b>	<b>1418479</b>	<b>35903</b>	<b>2.606</b>	<b>2.404</b>

**HHS Region 9 (AZ, CA, HI, NV) (Baseline: 2.8%)**

<b>CDC Week</b>	<b>Number Reporting</b>	<b>Patient Visits</b>	<b>Total ILI</b>	<b>% Unweighted ILI</b>	<b>% Weighted ILI</b>
200935	187	50225	1397	2.781	2.918
200936	186	48339	1497	3.097	3.371
200937	182	54904	1743	3.175	3.608
200938	156	49087	1810	3.687	3.352
200939	158	50606	2332	4.608	4.966
200940	242	87318	4405	5.045	6.041
200941	262	88133	5567	6.317	7.326
200942	262	97165	4390	4.518	5.954
200943	261	99218	4631	4.667	6.508
200944	269	96606	4256	4.406	6.344
200945	272	91486	3359	3.672	5.166
200946	271	101099	3482	3.444	4.583
200947	263	72463	2869	3.959	5.430
200948	263	96248	2867	2.979	3.939
200949	259	94228	2445	2.595	3.439
200950	243	84593	2064	2.440	3.595

**U.S. Outpatient Influenza-like Illness Surveillance Network (ILINet)  
2009-2010 Influenza Season  
Update: Friday, April 09, 2010  
Summary by Region**

**HHS Region 9 (AZ, CA, HI, NV) (Baseline: 2.8%)**

<b>CDC Week</b>	<b>Number Reporting</b>	<b>Patient Visits</b>	<b>Total ILI</b>	<b>% Unweighted ILI</b>	<b>% Weighted ILI</b>
200951	234	56438	1517	2.688	4.133
200952	230	58405	1806	3.092	4.437
201001	238	77808	1714	2.203	3.112
201002	250	92599	1780	1.922	3.004
201003	254	80182	1582	1.973	2.855
201004	252	92845	2039	2.196	3.295
201005	247	95056	2147	2.259	3.331
201006	232	85027	2222	2.613	3.871
201007	239	81180	1540	1.897	2.538
201008	231	85590	2209	2.581	3.515
201009	228	72084	1889	2.621	3.442
201010	220	80834	1808	2.237	3.281
201011	213	70743	1704	2.409	3.489
201012	183	61252	1424	2.325	3.252
201013	132	43631	734	1.682	1.365
<b>Totals</b>	<b>7119</b>	<b>2395392</b>	<b>73445</b>	<b>3.141</b>	<b>4.094</b>

**HHS Region 10 (AK, ID, OR, WA) (Baseline:3.3%)**

<b>CDC Week</b>	<b>Number Reporting</b>	<b>Patient Visits</b>	<b>Total ILI</b>	<b>% Unweighted ILI</b>	<b>% Weighted ILI</b>
200935	38	8562	381	4.450	4.534
200936	42	7903	440	5.568	4.173
200937	42	9845	408	4.144	3.569
200938	39	9095	507	5.574	4.709
200939	43	10059	779	7.744	6.869
200940	66	19448	1605	8.253	7.209
200941	66	17880	1718	9.609	9.225
200942	65	17961	1559	8.680	8.577
200943	65	17026	1243	7.301	7.165
200944	63	16532	819	4.954	5.127
200945	67	17013	653	3.838	3.976
200946	61	15960	452	2.832	2.912
200947	61	10389	231	2.224	2.388
200948	61	15834	289	1.825	1.611
200949	60	13869	220	1.586	1.302
200950	54	11754	171	1.455	1.496
200951	57	7999	145	1.813	1.597
200952	53	8071	175	2.168	2.025

**U.S. Outpatient Influenza-like Illness Surveillance Network (ILINet)**  
**2009-2010 Influenza Season**  
**Update: Friday, April 09, 2010**  
**Summary by Region**

**HHS Region 10 (AK, ID, OR, WA) (Baseline:3.3%)**

<b>CDC Week</b>	<b>Number Reporting</b>	<b>Patient Visits</b>	<b>Total ILI</b>	<b>% Unweighted ILI</b>	<b>% Weighted ILI</b>
201001	57	14643	193	1.318	1.153
201002	49	12806	168	1.312	1.240
201003	50	12342	169	1.369	1.126
201004	50	12446	245	1.969	1.881
201005	45	11275	204	1.809	1.711
201006	47	12858	200	1.555	1.337
201007	46	11501	252	2.191	1.707
201008	44	12631	211	1.670	1.110
201009	41	10909	182	1.668	1.422
201010	38	10043	160	1.593	1.298
201011	38	8242	119	1.444	1.196
201012	33	6673	95	1.424	1.279
201013	21	4698	77	1.639	1.121
<b>Totals</b>	<b>1562</b>	<b>376267</b>	<b>13476</b>	<b>3.739</b>	<b>3.483</b>

WEEKLY INFLUENZA ACTIVITY ESTIMATE  
 REPORTED BY STATE AND TERRITORIAL HEALTH DEPARTMENTS  
 UNITED STATES INFLUENZA SURVEILLANCE SEASON 2009-10

UPDATE - Week 13 (March 28 - April 3, 2010)

REPORTING AREA	WEEK 9	WEEK 10	WEEK 11	WEEK 12	WEEK 13
REGION 1					
MAINE	REGIONAL	NONE	SPORADIC	LOCAL	SPORADIC
N.H.	NONE	NONE	NONE	NONE	NONE
VERMONT	SPORADIC	SPORADIC	SPORADIC	SPORADIC	SPORADIC
MASS.	SPORADIC	SPORADIC	NONE	NONE	NONE
R.I.	SPORADIC	NONE	NONE	NONE	NONE
CONN.	SPORADIC	SPORADIC	SPORADIC	SPORADIC	SPORADIC
REGION 2					
NEW YORK	SPORADIC	SPORADIC	SPORADIC	SPORADIC	SPORADIC
NEW JERSEY	SPORADIC	SPORADIC	SPORADIC	SPORADIC	SPORADIC
PUERTO RICO	LOCAL	LOCAL	LOCAL	LOCAL	LOCAL
VIRGIN IS.	NO REPT.	NO REPT.	NO REPT.	NO REPT.	NO REPT.
REGION 3					
PENN.	SPORADIC	SPORADIC	SPORADIC	SPORADIC	SPORADIC
DELAWARE	SPORADIC	SPORADIC	SPORADIC	NONE	NONE
MARYLAND	SPORADIC	SPORADIC	SPORADIC	SPORADIC	SPORADIC
D.C.	SPORADIC	SPORADIC	SPORADIC	SPORADIC	SPORADIC
VIRGINIA	SPORADIC	SPORADIC	LOCAL	LOCAL	LOCAL
W. VIRGINIA	SPORADIC	SPORADIC	SPORADIC	SPORADIC	SPORADIC
REGION 4					
N. CAROLINA	LOCAL	LOCAL	LOCAL	LOCAL	SPORADIC
S. CAROLINA	REGIONAL	LOCAL	REGIONAL	REGIONAL	REGIONAL
GEORGIA	REGIONAL	REGIONAL	REGIONAL	REGIONAL	REGIONAL
FLORIDA	SPORADIC	SPORADIC	SPORADIC	SPORADIC	SPORADIC
KENTUCKY	SPORADIC	SPORADIC	SPORADIC	SPORADIC	SPORADIC
TENNESSEE	LOCAL	LOCAL	LOCAL	LOCAL	SPORADIC
ALABAMA	REGIONAL	REGIONAL	REGIONAL	REGIONAL	REGIONAL
MISSISSIPPI	REGIONAL	REGIONAL	LOCAL	SPORADIC	LOCAL
REGION 5					
OHIO	SPORADIC	SPORADIC	SPORADIC	SPORADIC	SPORADIC
INDIANA	SPORADIC	SPORADIC	SPORADIC	SPORADIC	SPORADIC
ILLINOIS	SPORADIC	SPORADIC	SPORADIC	SPORADIC	SPORADIC
MICHIGAN	SPORADIC	SPORADIC	SPORADIC	SPORADIC	SPORADIC
WISCONSIN	SPORADIC	SPORADIC	SPORADIC	SPORADIC	SPORADIC
MINNESOTA	SPORADIC	SPORADIC	SPORADIC	SPORADIC	SPORADIC
REGION 6					
ARKANSAS	SPORADIC	LOCAL	LOCAL	LOCAL	SPORADIC
LOUISIANA	LOCAL	LOCAL	LOCAL	LOCAL	SPORADIC
OKLAHOMA	LOCAL	LOCAL	SPORADIC	SPORADIC	SPORADIC
TEXAS	LOCAL	LOCAL	SPORADIC	SPORADIC	SPORADIC
NEW MEXICO	SPORADIC	SPORADIC	LOCAL	SPORADIC	SPORADIC

REGION 7					
IOWA	SPORADIC	SPORADIC	SPORADIC	SPORADIC	SPORADIC
MISSOURI	SPORADIC	SPORADIC	SPORADIC	SPORADIC	SPORADIC
NEBRASKA	NONE	NONE	NONE	NONE	NONE
KANSAS	SPORADIC	SPORADIC	SPORADIC	SPORADIC	SPORADIC
REGION 8					
NORTH DAKOTA	NONE	NONE	NONE	NONE	NONE
SOUTH DAKOTA	SPORADIC	SPORADIC	SPORADIC	SPORADIC	NONE
MONTANA	NONE	NONE	SPORADIC	NONE	SPORADIC
WYOMING	SPORADIC	SPORADIC	NONE	SPORADIC	NONE
COLORADO	SPORADIC	SPORADIC	SPORADIC	SPORADIC	SPORADIC
UTAH	SPORADIC	SPORADIC	SPORADIC	NONE	NONE
REGION 9					
ARIZONA	SPORADIC	SPORADIC	SPORADIC	SPORADIC	SPORADIC
NEVADA	SPORADIC	SPORADIC	SPORADIC	SPORADIC	SPORADIC
CALIFORNIA	SPORADIC	SPORADIC	SPORADIC	SPORADIC	SPORADIC
HAWAII	LOCAL	LOCAL	LOCAL	LOCAL	LOCAL
GUAM	SPORADIC	SPORADIC	SPORADIC	SPORADIC	SPORADIC
REGION 10					
IDAHO	NONE	NONE	NONE	NONE	NONE
WASHINGTON	SPORADIC	SPORADIC	SPORADIC	SPORADIC	SPORADIC
OREGON	NONE	NONE	NONE	NONE	NONE
ALASKA	SPORADIC	SPORADIC	SPORADIC	SPORADIC	SPORADIC

Activity Level	ILI activity*/Outbreaks		Laboratory data
No activity	Low	And	No lab confirmed cases <sup>†</sup>
Sporadic	Not increased	And	Isolated lab-confirmed cases
	OR		
Local	Not increased	And	Lab confirmed outbreak in one institution <sup>‡</sup>
	OR		
Regional (doesn't apply to states with ≤4 regions)	Increased ILI in 1 region <sup>**</sup> ; ILI activity in other regions is not increased	And	Recent (within the past 3 weeks) lab evidence of influenza in region with increased ILI
	OR		
Regional (doesn't apply to states with ≤4 regions)	2 or more institutional outbreaks (ILI or lab confirmed) in 1 region; ILI activity in other regions is not increased	And	Recent (within the past 3 weeks) lab evidence of influenza in region with the outbreaks; virus activity is no greater than sporadic in other regions
	OR		
Regional (doesn't apply to states with ≤4 regions)	Increased ILI in ≥2 but less than half of the regions	And	Recent (within the past 3 weeks) lab confirmed influenza in the affected regions
	OR		
Regional (doesn't apply to states with ≤4 regions)	Institutional outbreaks (ILI or lab confirmed) in ≥2 and less than half of the regions	And	Recent (within the past 3 weeks) lab confirmed influenza in the affected regions
	OR		
Widespread	Increased ILI and/or institutional outbreaks (ILI or lab confirmed) in at least half of the regions	And	Recent (within the past 3 weeks) lab confirmed influenza in the state.

\* ILI activity can be assessed using a variety of data sources including ILINet providers, school/workplace absenteeism, and other syndromic surveillance systems that monitor influenza-like illness.

† Lab confirmed case = case confirmed by rapid diagnostic test, antigen detection, culture, or PCR.

‡ Institution includes nursing home, hospital, prison, school, etc.

\*\*Region: population under surveillance in a defined geographical subdivision of a state.