

**2008-2009 Influenza Season**  
**Week 43, ending October 25, 2008**

*(All data are preliminary and may change as more reports are received.)*

**Synopsis:** During week 43 (October 19-25, 2008), a low level of influenza activity was reported in the United States.

- Five (0.4%) specimens tested by U.S. World Health Organization (WHO) and National Respiratory and Enteric Virus Surveillance System (NREVSS) collaborating laboratories, and reported to CDC/Influenza Division, were positive for influenza.
- The proportion of deaths attributed to pneumonia and influenza (P&I) was below the epidemic threshold.
- The proportion of outpatient visits for influenza-like illness (ILI) was below national and region-specific baseline levels.
- Thirteen states and Puerto Rico reported sporadic influenza activity; 36 states and the District of Columbia reported no influenza activity; and one state did not report.

**National and Regional Summary of Select Surveillance Components**

	Data for current week			Data cumulative for the season				
	Out-patient ILI*	% positive for flu†	Number of jurisdictions reporting regional or widespread activity‡	A (H1)	A (H3)	A Unsub-typed	B	Pediatric Deaths
<b>Nation</b>	Normal	0.4%	0 of 51	1	6	35	14	0
<b>New England</b>	Normal	0%	0 of 6	0	0	0	0	0
<b>Mid-Atlantic</b>	Normal	0.1%	0 of 3	0	0	1	0	0
<b>East North Central</b>	Normal	0%	0 of 5	0	0	0	0	0
<b>West North Central</b>	Normal	0%	0 of 7	0	0	0	0	0
<b>South Atlantic</b>	Normal	0.7%	0 of 9	0	0	9	3	0
<b>East South Central</b>	Normal	0%	0 of 4	0	0	0	0	0
<b>West South Central</b>	Normal	0.9%	0 of 4	0	0	7	2	0
<b>Mountain</b>	Normal	3.1%	0 of 8	0	6	3	3	0
<b>Pacific</b>	Normal	2.1%	0 of 5	1	0	15	6	0

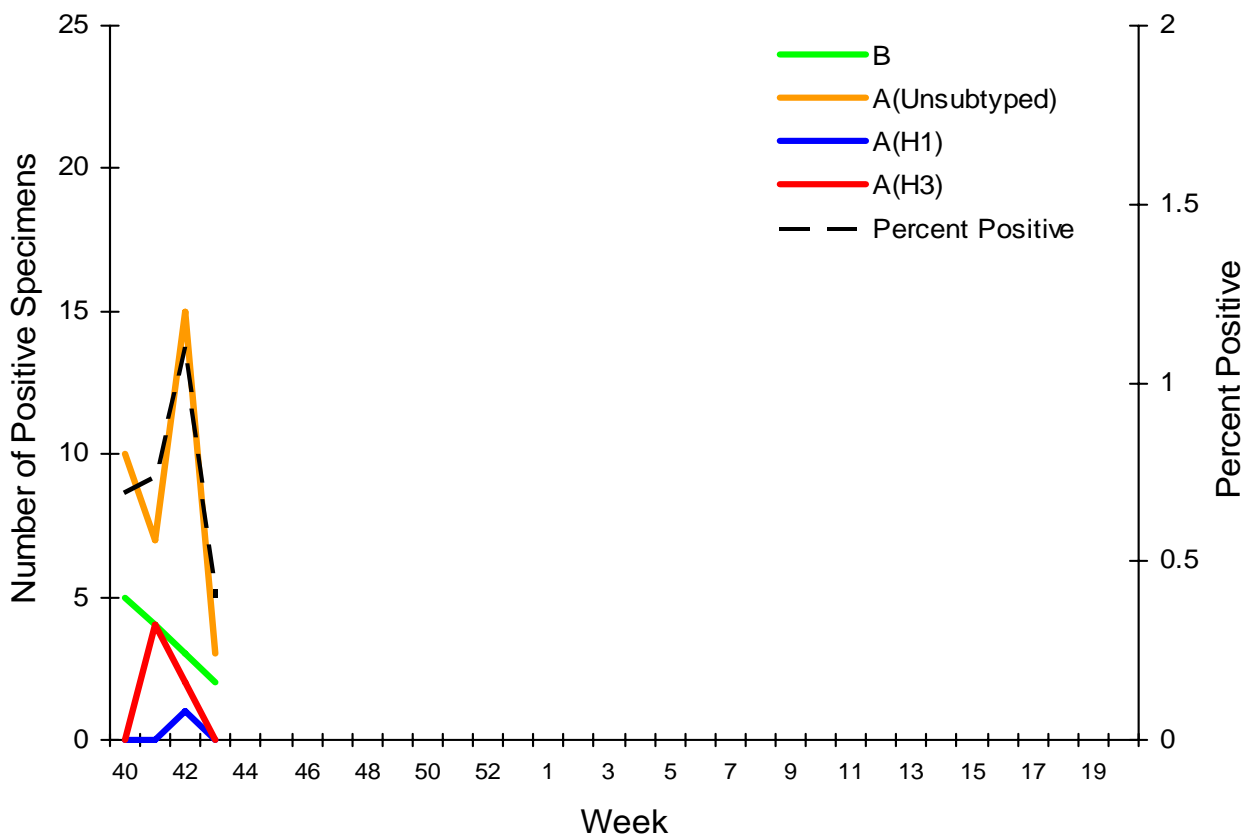
\* Elevated means the % of visits for ILI is at or above the national or region-specific baseline

† National data are for current week; regional data are for the most recent three weeks

‡ Includes all 50 states and the District of Columbia

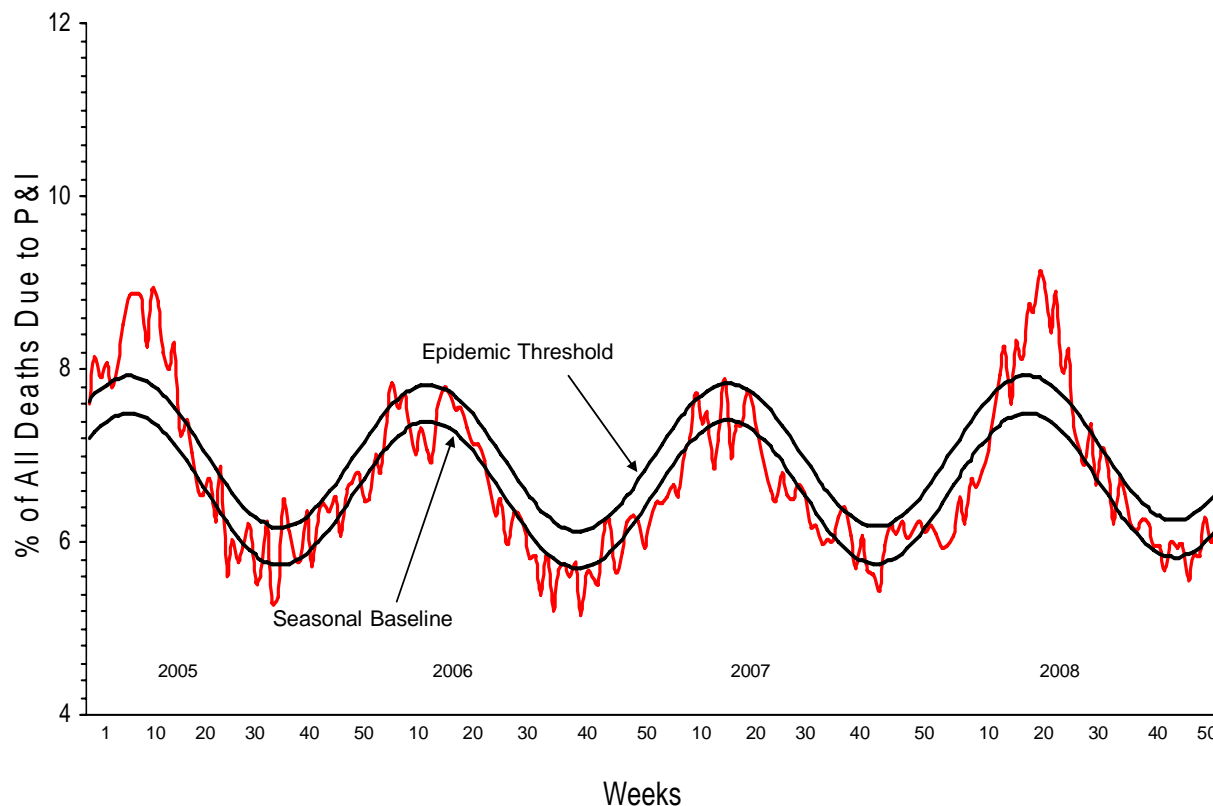
**U.S. Virologic Surveillance:** During week 43, WHO and NREVSS laboratories located in all 50 states and Washington D.C. reported 1,251 specimens tested for influenza viruses, five of which were positive: three influenza A viruses that were not subtyped (Pacific and West South Central regions) and two influenza B viruses (Pacific and South Atlantic regions).

### U.S. WHO/NREVSS Collaborating Laboratories, National Summary, 2008-09



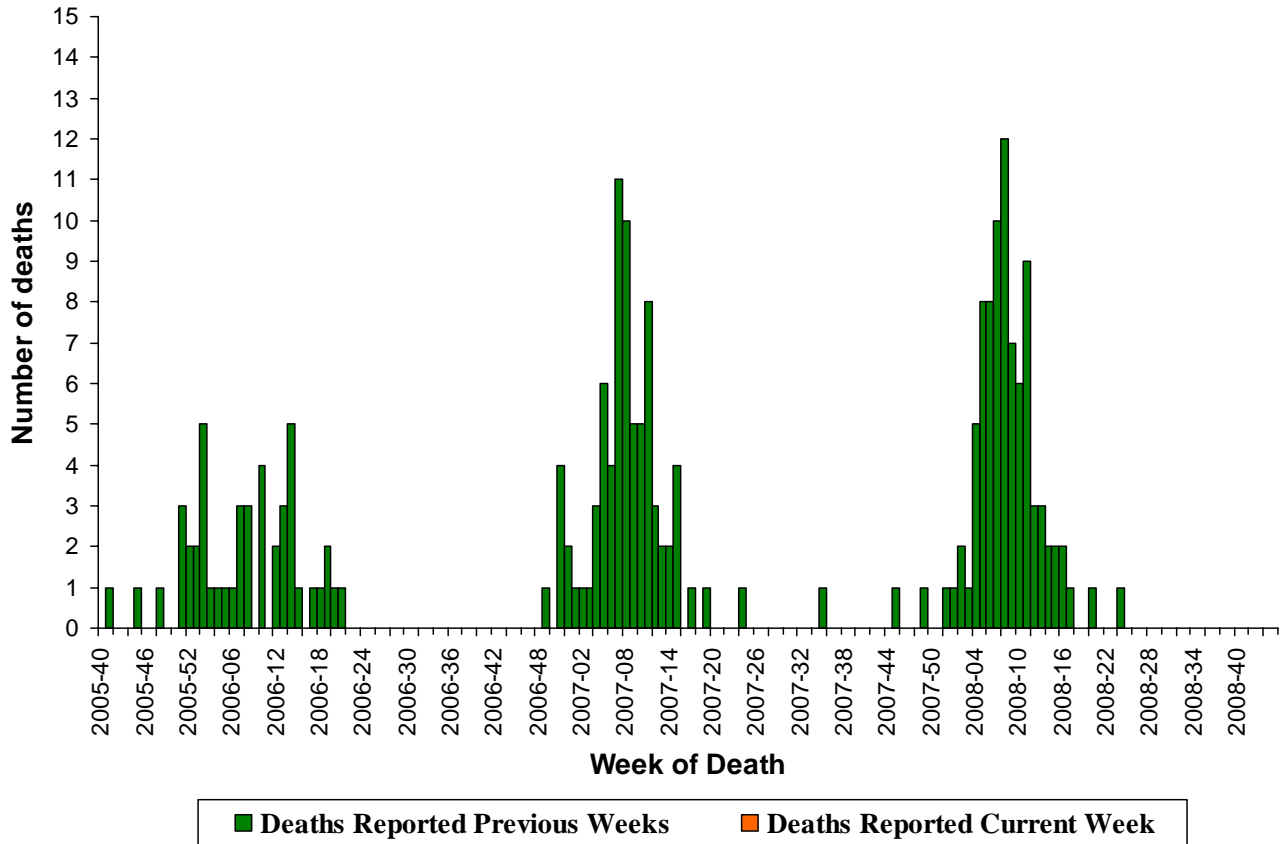
**Pneumonia and Influenza (P&I) Mortality Surveillance:** During week 43, 6.5% of all deaths reported through the 122-Cities Mortality Reporting System were due to P&I. This percentage is below the epidemic threshold of 6.7% for week 43.

### Pneumonia and Influenza Mortality for 122 U.S. Cities Week ending 10/25/2008



**Influenza-Associated Pediatric Mortality:** No influenza-associated pediatric deaths were reported during week 43.

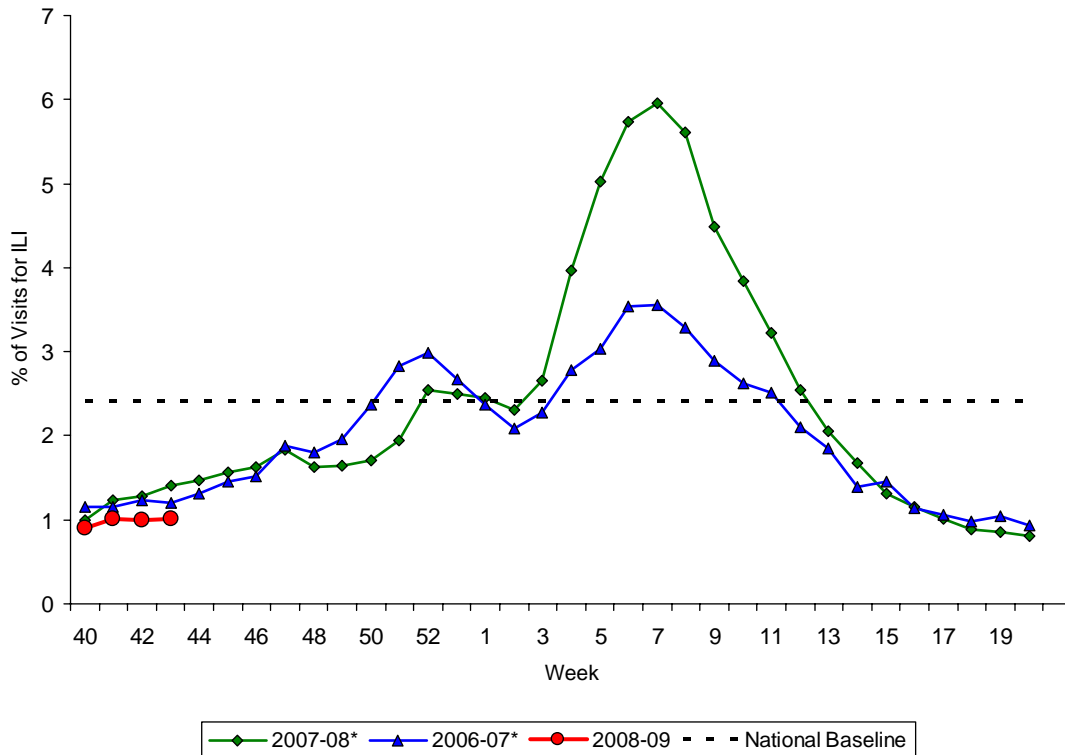
Number of Influenza-Associated Pediatric Deaths by Week of Death:  
2005-06 season to present



**Influenza-Associated Hospitalizations:** Laboratory-confirmed influenza-associated hospitalizations are monitored in two population-based surveillance networks: the Emerging Infections Program (EIP) and the New Vaccine Surveillance Network (NVSN). EIP and NVSN estimated rates of hospitalization for influenza will be reported every two weeks starting later this season.

**Outpatient Illness Surveillance:** During week 43, 1.0% of patient visits reported through the U.S. Outpatient Influenza-like Illness Surveillance Network (ILINet) (formerly known as the U.S. Influenza Sentinel Provider Surveillance Network) were due to influenza-like illness (ILI). This percentage is less than the national baseline of 2.4%. On a regional level, the percentage of visits for ILI ranged from 0.4% to 2.1%. All nine regions reported percentages of visits for ILI below their respective region-specific baselines.

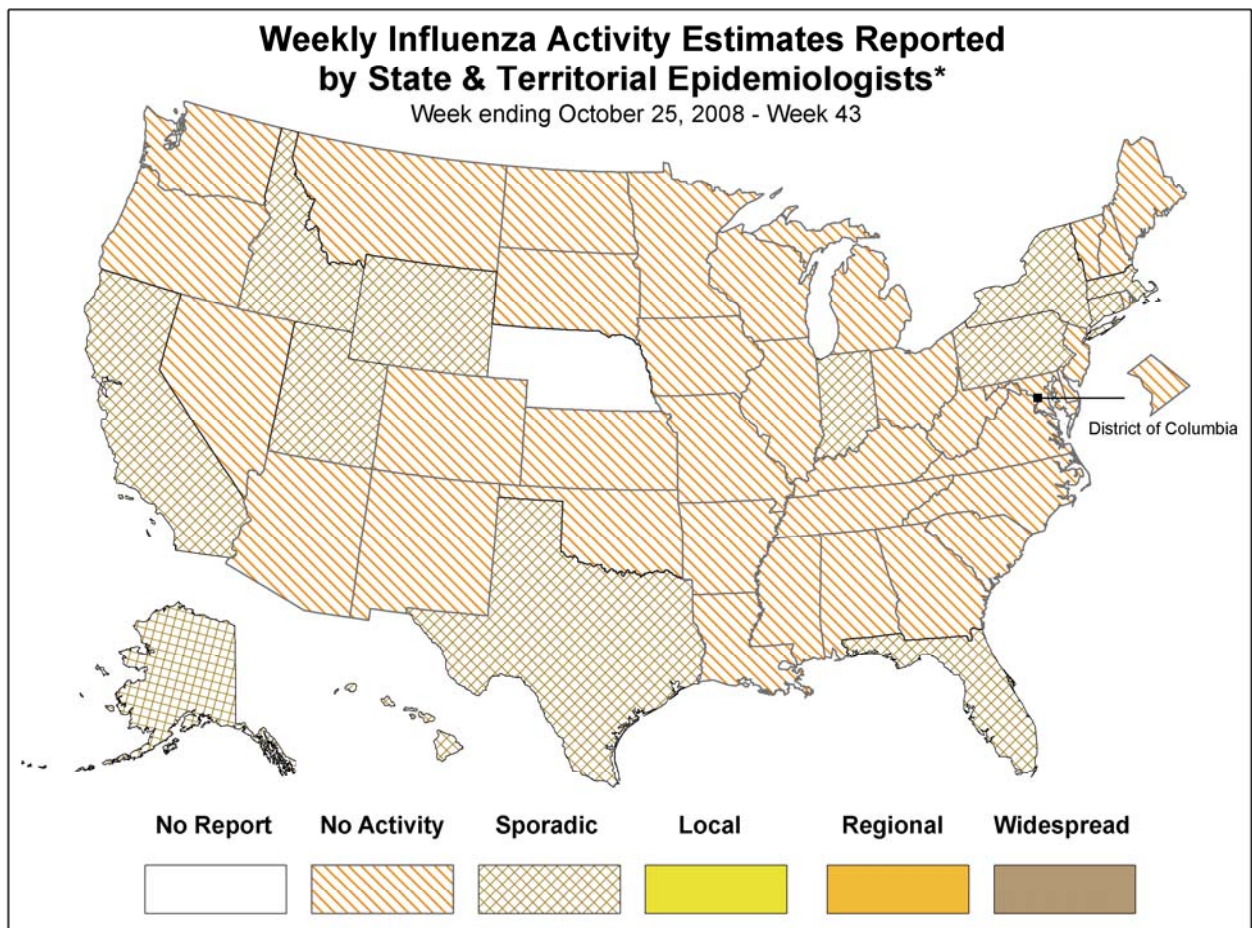
Percentage of Visits for Influenza-like Illness (ILI) Reported by the U.S. Outpatient Influenza-like Illness Surveillance Network (ILINet), National Summary, 2008-09 and Previous Two Seasons



\*There was no week 53 during the 2006-07 and 2007-08 seasons, therefore the week 53 data point for those seasons is an average of weeks 52 and 1.

**Geographic Spread of Influenza as Assessed by State and Territorial Epidemiologists:** During week 43 the following influenza activity was reported:

- Sporadic activity was reported in Puerto Rico and 13 states (Alaska, California, Connecticut, Florida, Hawaii, Idaho, Indiana, Massachusetts, New York, Pennsylvania, Texas, Utah, and Wyoming).
- No influenza activity was reported in the District of Columbia and 36 states (Alabama, Arizona, Arkansas, Colorado, Delaware, Georgia, Illinois, Iowa, Kansas, Kentucky, Louisiana, Maine, Maryland, Michigan, Minnesota, Mississippi, Missouri, Montana, Nevada, New Hampshire, New Jersey, New Mexico, North Carolina, North Dakota, Ohio, Oklahoma, Oregon, Rhode Island, South Carolina, South Dakota, Tennessee, Vermont, Virginia, Washington, West Virginia, and Wisconsin).
- One state did not report (Nebraska).



\* This map indicates geographic spread & does not measure the severity of influenza activity

A description of surveillance methods is available at: <http://www.cdc.gov/flu/weekly/fluactivity.htm>

Report prepared: October 31, 2008.