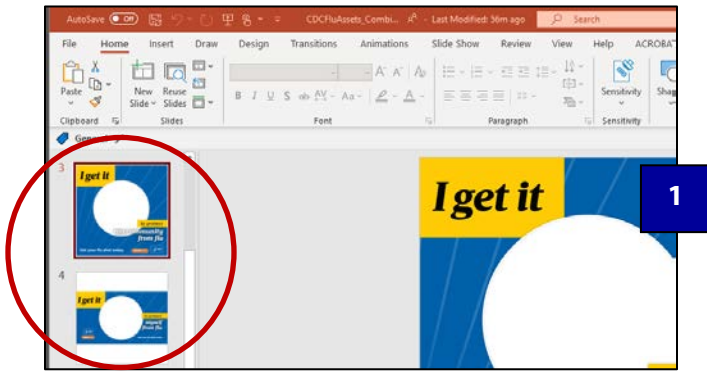
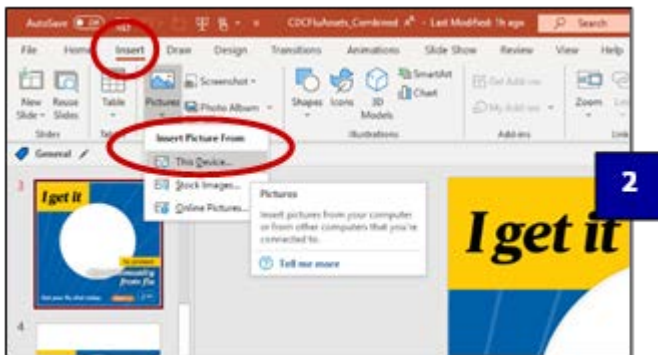


How to Use the “I Get It” Social Media Graphic PowerPoint Template



STEP 1: SELECT A SLIDE

Determine which frame style and message you would like to use and for which social media channel (Facebook/Instagram 1080x1080 or Twitter 1200x675).

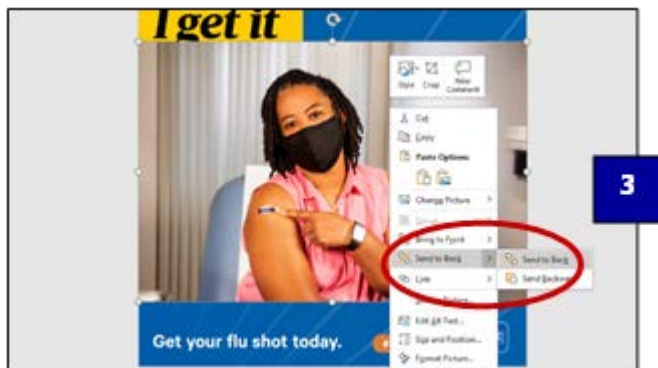


STEP 2: SELECT A PHOTO

To upload the photo into the template, click **Insert > Picture > Picture from File (or Insert Picture from This Device)** from the toolbar. Navigate to the image you wish to use.

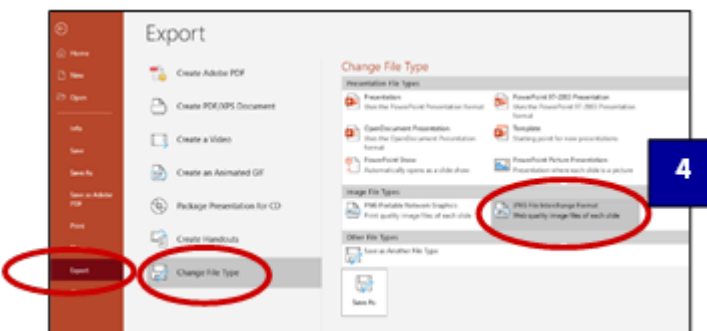
If the photo you selected is not cropped correctly, select **Format Picture or the landscape icon**, then click **Crop** and correct your image on the slide. Click outside the image area when you are satisfied.

You can also copy and paste your preferred image directly onto the slide you would like to use.



STEP 3: SEND PHOTO TO BACK

To send the photo to back, right click on photo and select **'Send to back.'**



STEP 4: SAVE IMAGE

Export your new image by saving your file as a JPEG. Click **File > Export** and select **Change File Type** then select **JPEG** from the file format drop down menu. After you click Save As choose the option for either 'current slide only' or 'every slide' for multiple photos and click **export**.