



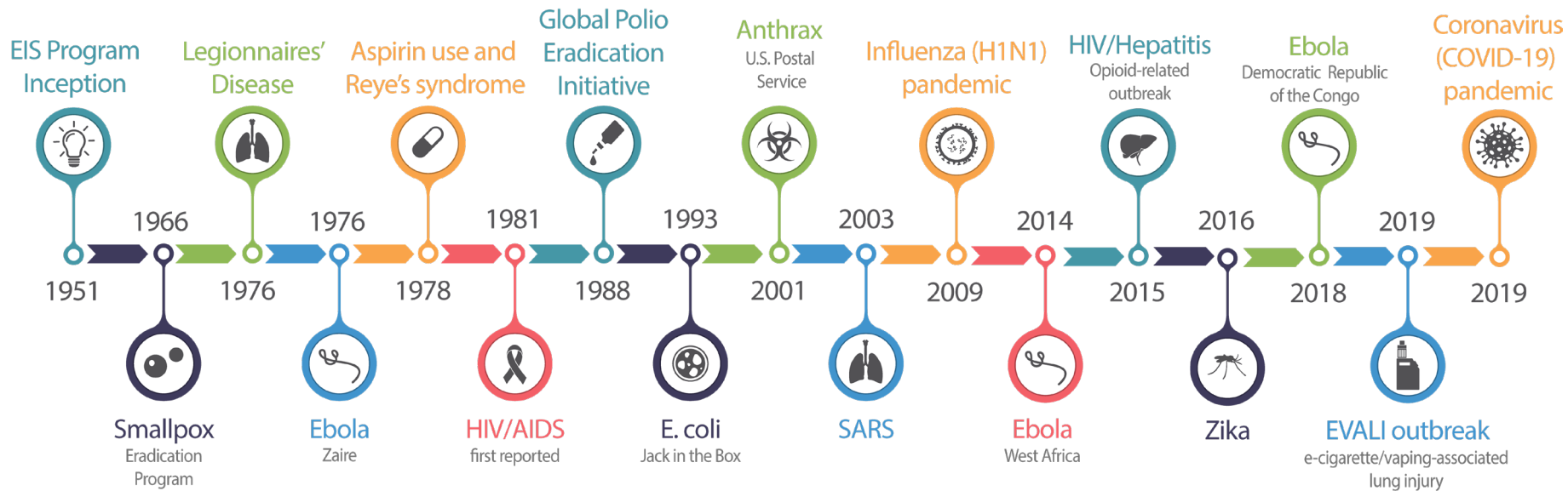
U.S. Department of
Health and Human Services
Centers for Disease
Control and Prevention

EPIDEMIC INTELLIGENCE SERVICE

CDC's Disease Detective Training Program



WE WERE THERE



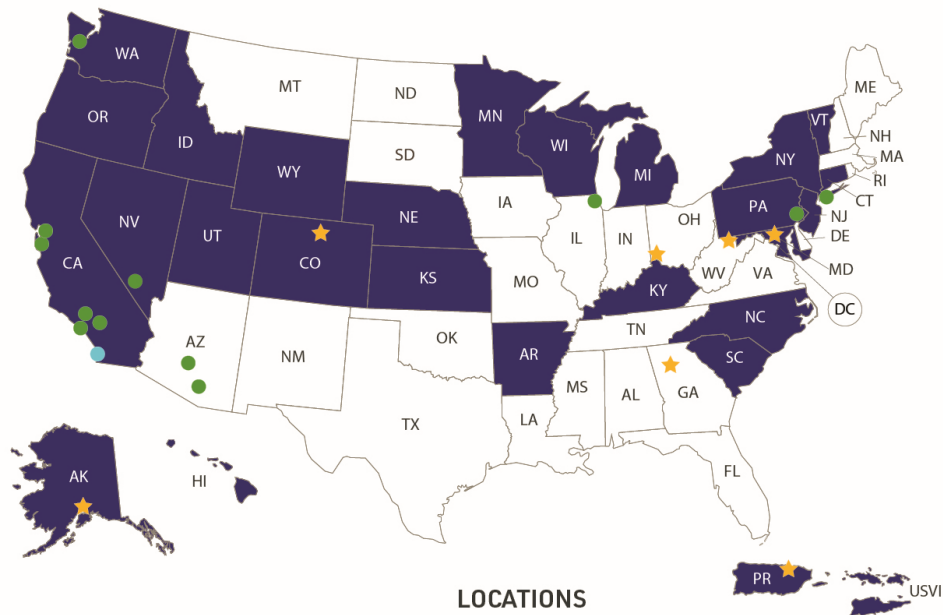
A man and a woman are sitting at a desk in an office, looking at a large computer monitor. The man is wearing a blue shirt and glasses, and the woman is wearing a light-colored top. They are both looking at the screen, which displays a complex spreadsheet or data management system. The desk is cluttered with a keyboard, a mouse, and a large bottle of water. A window in the background shows a white pickup truck parked outside. The text "ON THE FRONT LINES" is overlaid in the center of the image.

ON THE FRONT LINES



2023 & 2024 EIS CLASSES

86 in class of 2023 | 49 in class of 2024



LOCATIONS

■ State or territorial health departments (30 officers)

● City, county, tribal, and other partners (16 officers)

★ CDC headquarters and campuses (88 officers)

● Combined local and federal positions (1 officer)

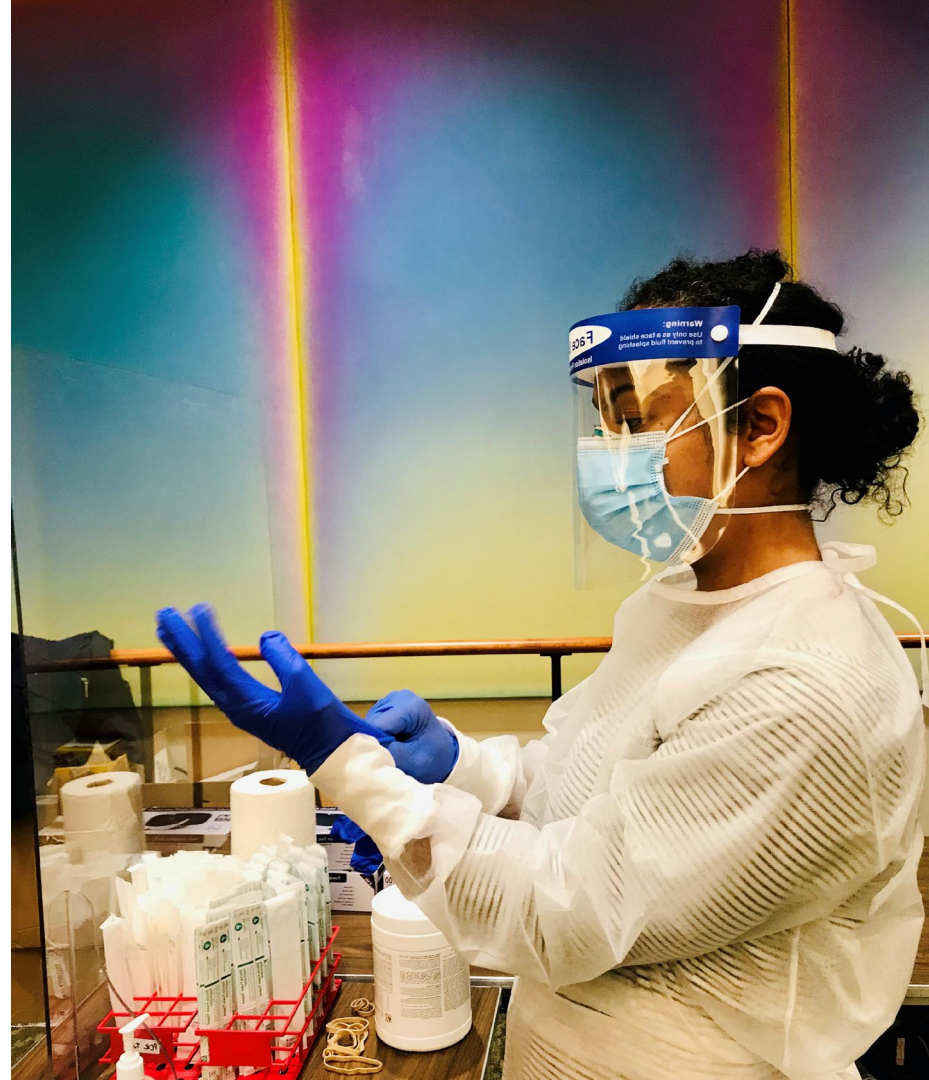
2023 and 2024 EIS classes (135 officers)
86 in class of 2023 | 49 in class of 2024

Effective July 2024



**EIS
OFFICERS
ARE ...**

**WHY
EIS?**





**THERE'S
NOTHING
LIKE IT**



**WHERE
COULD
EIS
TAKE
YOU?**



97%

**of recent EIS graduates continue
in public health-related positions**



Recent EIS alumni stay with **CDC** and **State, Tribal, Local, and Territorial Health Departments**

82%

work in U.S. government
(126/153)



Recent EIS alumni stay with **CDC** and **State, Tribal, Local, and Territorial Health Departments**

82%

work in U.S. government
(126/153)

61%

work at CDC
(94/153)





Recent EIS alumni stay with **CDC** and **State, Tribal, Local, and Territorial Health Departments**

82%

work in U.S. government
(126/153)

61%

work at CDC
(94/153)

13%

work in domestic
State, Territorial,
Tribal, Local
(20/153)



Recent EIS alumni stay with **CDC** and **State, Tribal, Local, and Territorial Health Departments**

82%

work in U.S. government
(126/153)

61%

work at CDC
(94/153)

13%

work in domestic
State, Territorial,
Tribal, Local
(20/153)

8%

work at other
federal agencies
(12/153)

EIS alumni assume key **leadership roles** in **State, Tribal, Local, and Territorial Health Departments**



34%

Of State Epidemiologists

EIS alumni assume key **leadership roles** in **State, Tribal, Local, and Territorial Health Departments**



34%

Of State Epidemiologists

45%

Of State Public Health Veterinarians



4 of the last 12
CDC Directors are EIS alumni




Ready to make
a difference?



EIS class of **2026**

Application Period: March 3 - June 5, 2025

www.cdc.gov/eis



CDC Epidemic Intelligence Service

EXPLORE TOPICS ^

Public Health >

- About the Epidemic Intelligence Service
- Apply
- What Fellows Do
- Publications and News Articles
- Attending EIS Conference
- Promotion and Recruitment Tools
- Applying to Host a Fellow
- Requesting EIS Services

[VIEW ALL >](#)

Applying to be a Fellow

KEY POINTS

- To join EIS, you must be willing to commit to this 2-year, full-time fellowship (beginning in July) and relocate to your assignment.

Opportunities & Updates

The 2025 fellowship application period is closed. The next application period will open in March 2025.

For questions about the EIS program, please contact us directly at EISApplication@cdc.gov.

How to prepare

1. [Check Eligibility](#)
2. [Review Salary and Benefits Information](#)
3. [Informational Webinars for Fellowship Applicants](#)

ON THIS PAGE

[Opportunities & Updates](#)

[How to prepare](#)

[Class of 2026 Deadlines & Decision D...](#)

[Resources](#)

RELATED PAGES

[Eligibility](#)



LEARN MORE

www.cdc.gov/eis

www.cdc.gov/fellowships

