



U.S. Department of  
Health and Human Services  
Centers for Disease  
Control and Prevention

A woman with dark hair tied back, wearing a grey long-sleeved shirt and a bright yellow safety vest, is crouching outdoors. She is holding a pen and writing in a notebook. She has sunglasses perched on her head. The background shows a body of water, some trees, and a rocky shoreline. The scene is brightly lit, suggesting it's daytime.

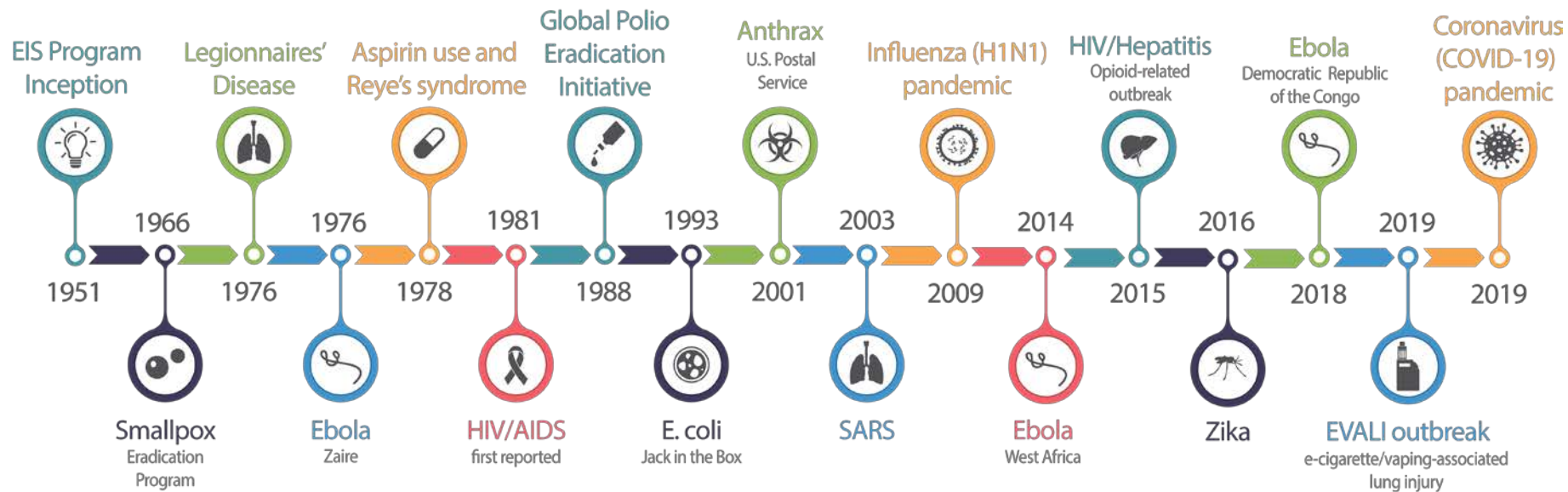
# EPIDEMIC INTELLIGENCE SERVICE

---

## CDC's Disease Detective Training Program



# WE WERE THERE







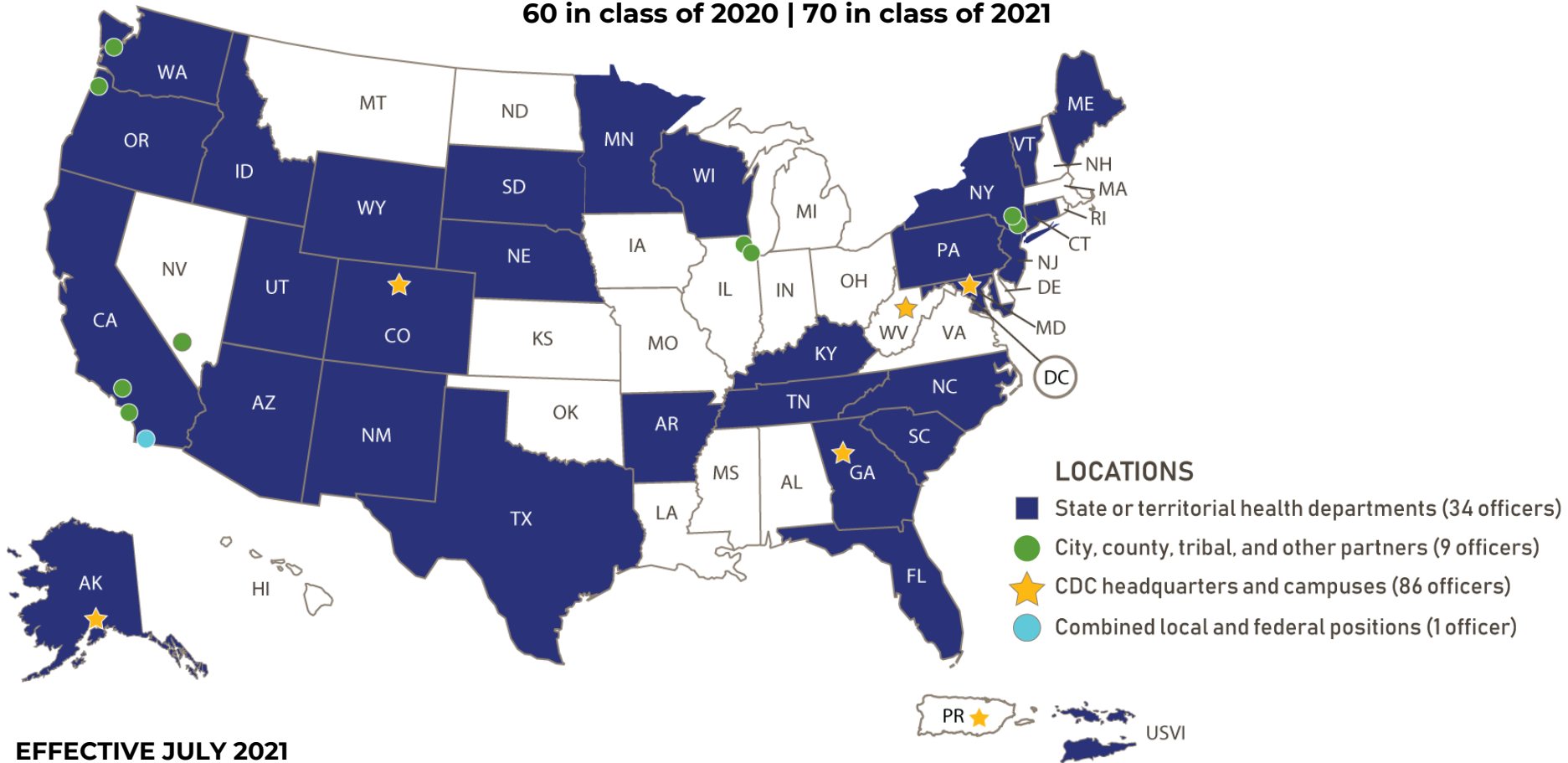
A man and a woman are sitting at a desk in an office, looking at a large computer monitor. The man is wearing a blue shirt and glasses, and the woman is wearing a light-colored top. They are both looking intently at the screen, which displays a complex data table with yellow highlights. The desk is wooden and has a keyboard, a mouse, and a large bottle of water. A window in the background shows a white pickup truck parked outside. The text "ON THE FRONT LINES" is overlaid in the center of the image.

# ON THE FRONT LINES



# 2020 & 2021 EIS CLASSES

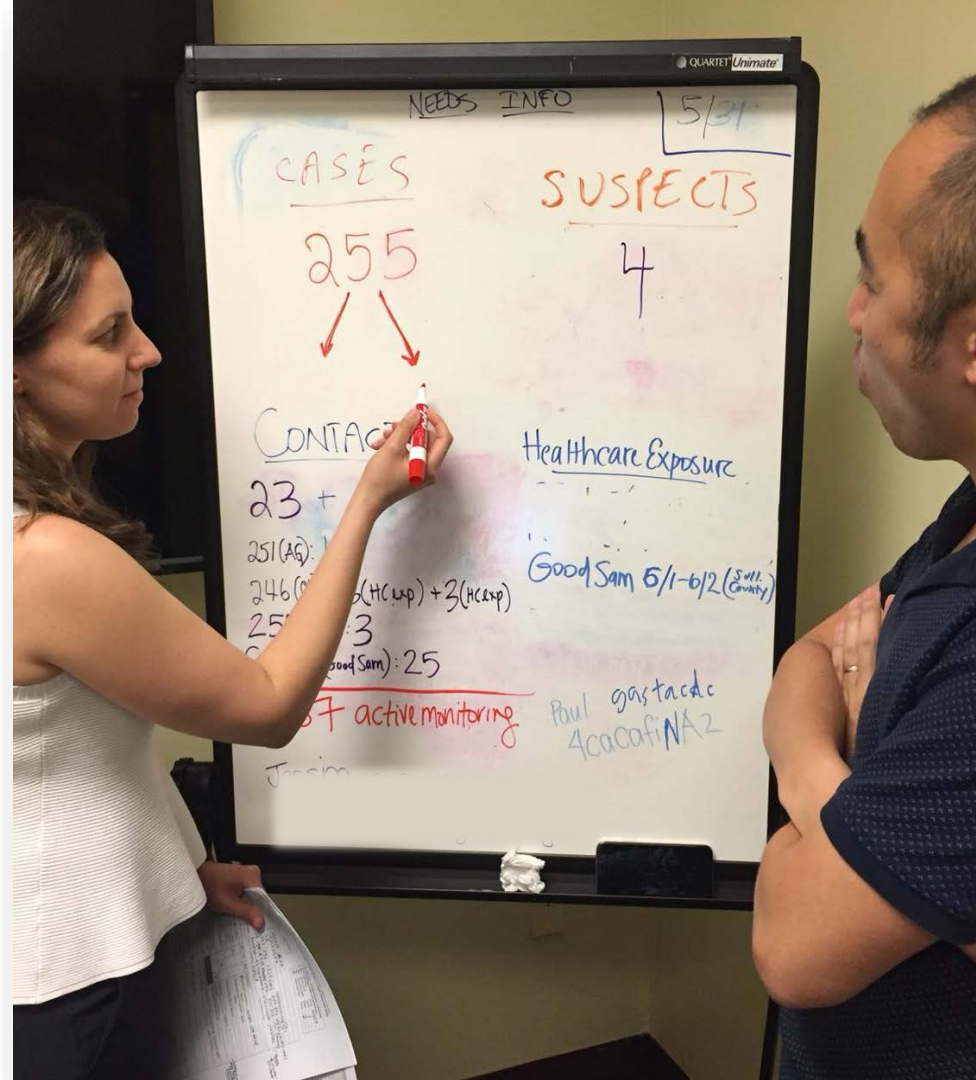
60 in class of 2020 | 70 in class of 2021





**EIS  
OFFICERS  
ARE...**

# WHY EIS?







**THERE'S  
NOTHING  
LIKE IT**



Add  
Your  
Photo  
Here

Add your name and  
EIS story here





**WHERE  
COULD  
EIS  
TAKE  
YOU?**



**98%**

**of recent EIS graduates continue  
in public health-related positions**



**4 of the last 11  
CDC Directors are EIS alumni**



**EIS officers and alumni contributed to  
900+ peer-reviewed scientific  
publications from classes of 2015-2020**





Ready to make  
*a difference?*



## Epidemic Intelligence Service

[CDC](#) > [EIS](#)



### EIS

- What EIS Officers Do +
- Applying to EIS -**
- Check Eligibility
- Review Salary/Benefits
- Prepare Application Info
- Complete Online Application
- Requesting EIS Services +
- Attending EIS Conference +
- Who We Are +
- Media and Publications +
- About Our Program +

The application period for EIS Class of 2021 will be open April 8-June 12, 2020. Check your [eligibility](#) and prepare for the [application](#) process.

For questions about the EIS program, please contact us directly at [eis@cdc.gov](mailto:eis@cdc.gov).

## Applying to EIS

Follow these steps to apply to EIS. You must be willing to commit to this 2-year, full-time fellowship (beginning in July) and relocate to your assignment.

- 1 Check Eligibility
- 2 Review Salary and Benefits
- 3 Prepare Application Information
- 4 Complete Online Application

For EIS application questions, contact us at [eis@cdc.gov](mailto:eis@cdc.gov).

## Class of 2021 Deadlines & Decision Dates

\*Dates subject to change\*

April 8, 2020	Application period opens at 9:00 a.m. (ET).
June 12, 2020	Application period closes at 11:59 p.m. (ET). All applications and supporting materials must be received by the deadline. Late applications will not be considered.
June-August 2020	EIS program reviews applications and selects applicants for interviews.
September 10-17, 2020	CDC interviews applicants in Atlanta (applicants pay their own travel expenses).
October 2020	EIS program notifies applicants of their status (accepted, wait-listed, or rejected).

# HOW TO APPLY

[cdc.gov/eis](https://cdc.gov/eis)

## SPRING 2022



# LEARN MORE

[cdc.gov/eis](https://cdc.gov/eis)  
[cdc.gov/fellowships](https://cdc.gov/fellowships)

