



U.S. Department of  
Health and Human Services  
Centers for Disease  
Control and Prevention

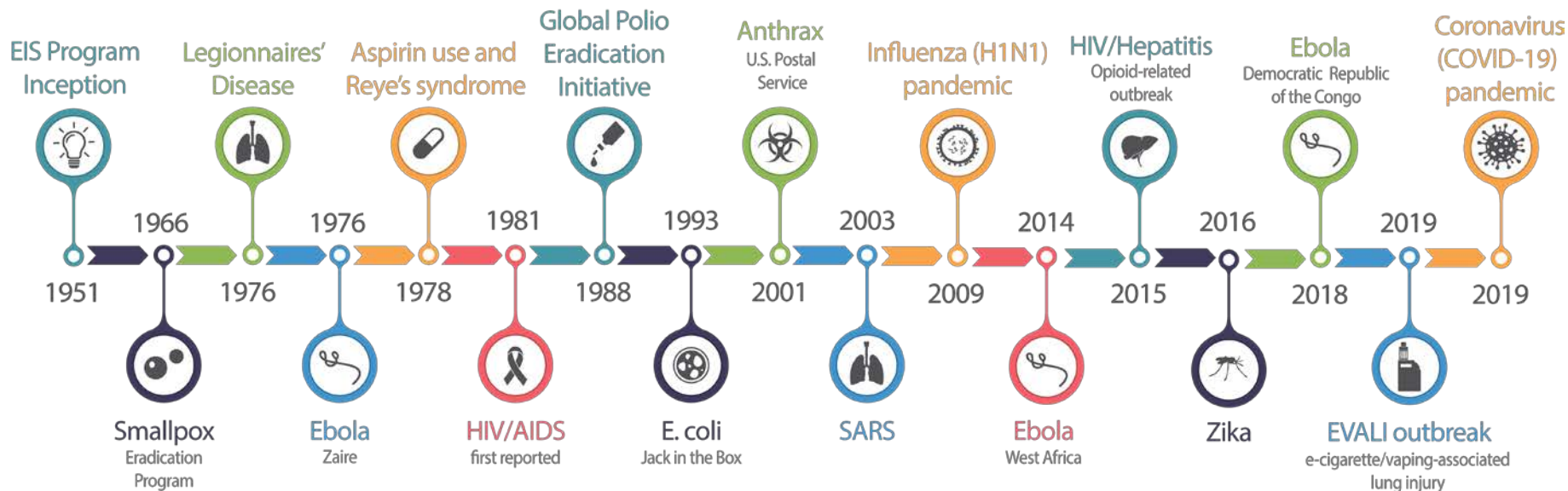
A woman with dark hair tied back, wearing a grey long-sleeved shirt and a bright yellow safety vest, is crouching on a gravelly bank. She is holding a pen and writing in a small notebook. In the background, there is a calm body of water, some trees, and a large saguaro cactus. The scene is brightly lit, suggesting a sunny day.

# EPIDEMIC INTELLIGENCE SERVICE

---

## CDC's Disease Detective Training Program

# WE WERE THERE

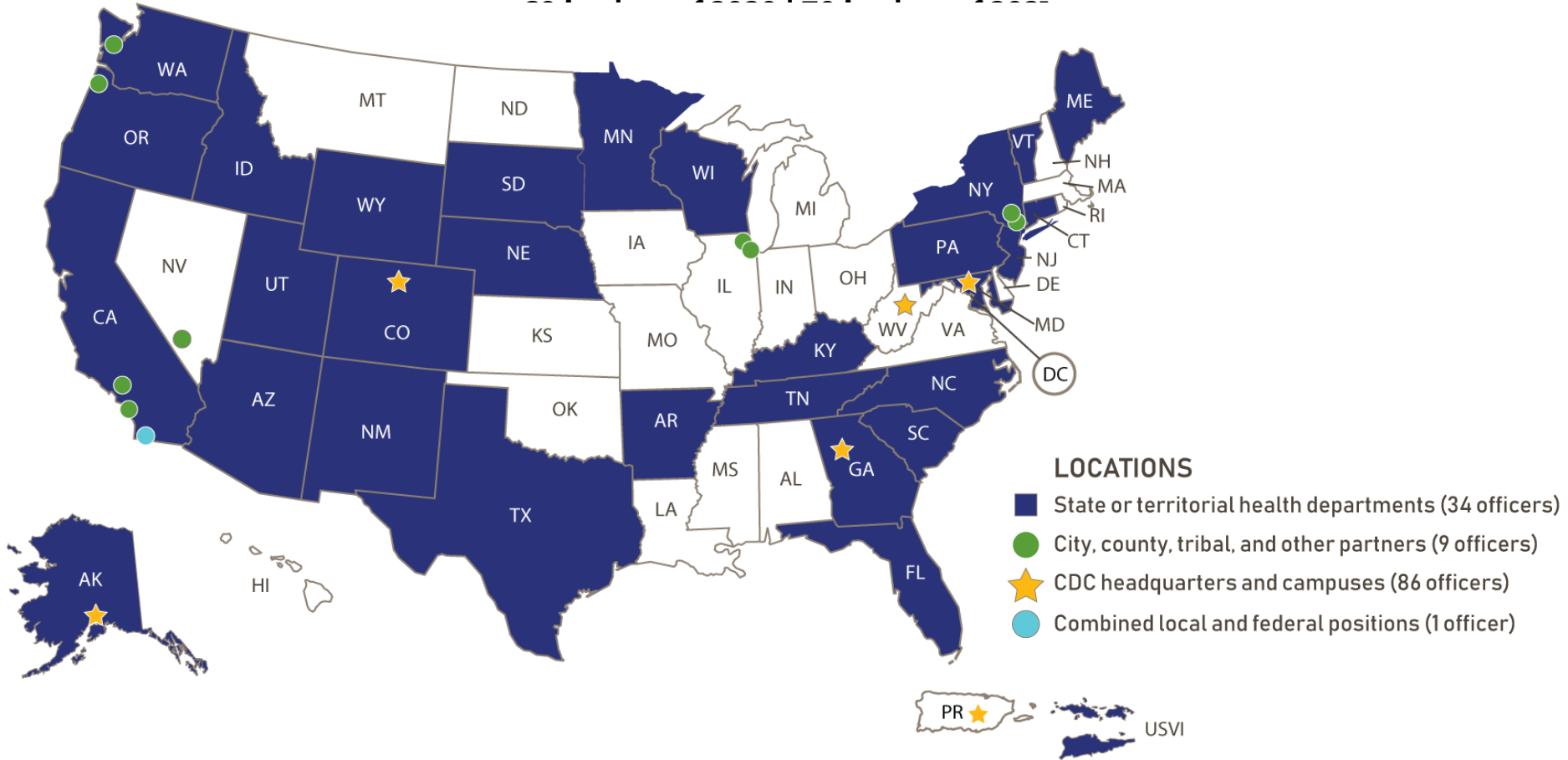




A man and a woman are sitting at a desk in an office, looking at a large computer monitor. The man is wearing a blue shirt and glasses, and the woman is wearing a light-colored top. They are both looking at the screen, which displays a complex data table or spreadsheet. The desk is wooden and has a keyboard, a mouse, and a large bottle of water on it. A window in the background shows a white pickup truck parked outside. The text "ON THE FRONT LINES" is overlaid in the center of the image.

ON THE FRONT LINES

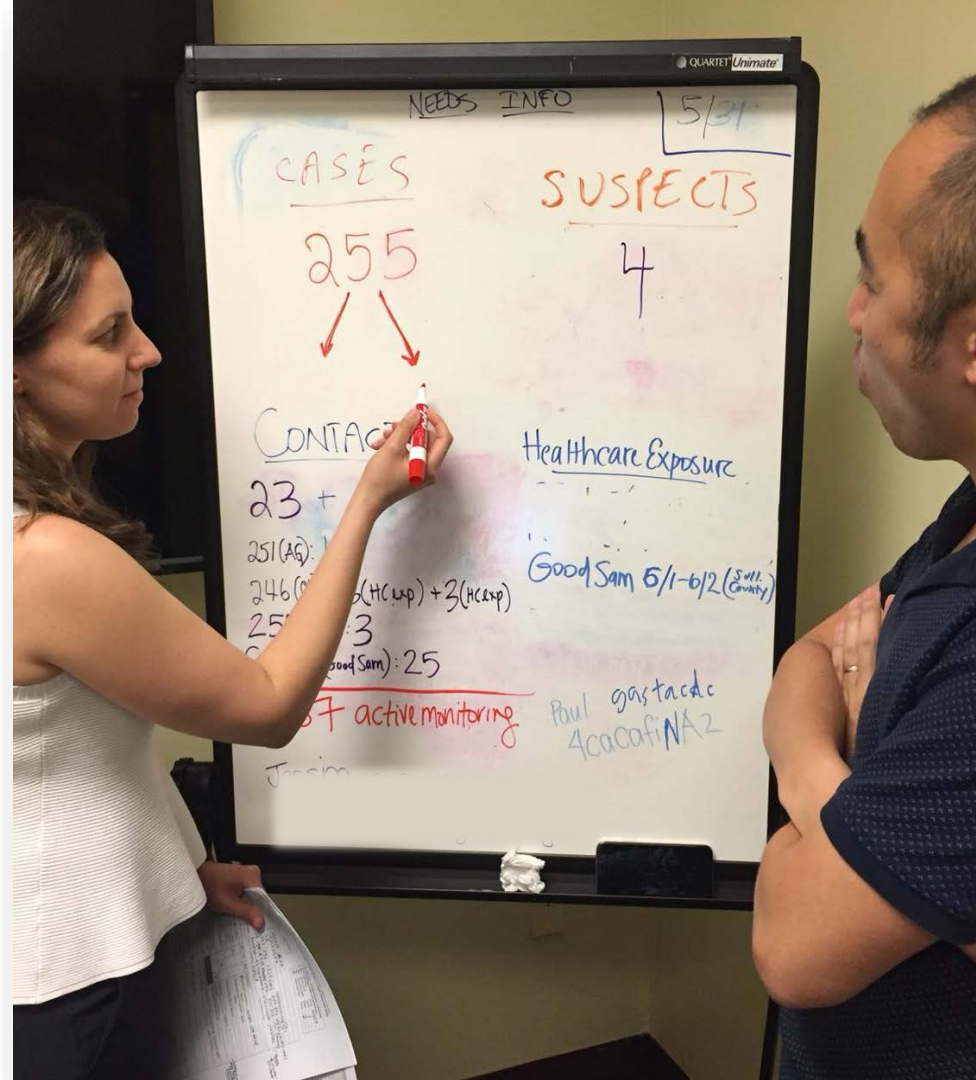
# 2020 & 2021 EIS CLASSES





**EIS  
OFFICERS  
ARE...**

# WHY EIS?







**THERE'S  
NOTHING  
LIKE IT**

Add  
Your  
Photo  
Here

Add your name and  
EIS story here



A man with grey hair and glasses, wearing a light blue button-down shirt and jeans, is leaning over a desk. A woman with brown hair in a ponytail, wearing a dark blue short-sleeved shirt with a name tag, is also leaning over the desk. They are both looking at a large map spread out on the desk. The map shows geographical features and labels for 'LIBERIA' and 'COTE D'IVOIRE'. In the background, there are office shelves with boxes, one of which has the 'esri' logo. A semi-transparent white box with the text 'WHERE COULD EIS TAKE YOU?' is overlaid on the center of the image.

**WHERE  
COULD  
EIS  
TAKE  
YOU?**



**98%**

**of recent EIS graduates continue  
in public health-related positions**



**4 of the last 11  
CDC Directors are EIS alumni**



**EIS officers and alumni contributed to  
900+ peer-reviewed scientific  
publications from classes of 2015-2020**





Ready to make  
*a difference?*

# HOW TO APPLY

[cdc.gov/eis](https://cdc.gov/eis)

SPRING 2022

## Epidemic Intelligence Service

CDC > EIS



### EIS

What EIS Officers Do +

Applying to EIS -

Check Eligibility

Review Salary/Benefits

Prepare Application Info

Complete Online Application

Requesting EIS Services +

Attending EIS Conference +

Who We Are +

Media and Publications +

About Our Program +

## Applying to EIS

Follow these steps to apply to EIS. You must be willing to commit to this 2-year, full-time fellowship (beginning in July) and relocate to your assignment.

1 Check Eligibility

2 Review Salary and Benefits

3 Prepare Application Information

4 Complete Online Application

For EIS application questions, contact us at [eis@cdc.gov](mailto:eis@cdc.gov).

The application period for EIS Class of 2021 will be open April 8-June 12, 2020. Check your [eligibility](#) and prepare for the [application](#) process.

For questions about the EIS program, please contact us directly at [eis@cdc.gov](mailto:eis@cdc.gov).

## Class of 2021 Deadlines & Decision Dates

\*Dates subject to change\*

April 8, 2020	Application period opens at 9:00 a.m. (ET).
June 12, 2020	Application period closes at 11:59 p.m. (ET). All applications and supporting materials must be received by the deadline. Late applications will not be considered.
June-August 2020	EIS program reviews applications and selects applicants for interviews.
September 10-17, 2020	CDC interviews applicants in Atlanta (applicants pay their own travel expenses).
October 2020	EIS program notifies applicants of their status (accepted, wait-listed, or rejected).

# LEARN MORE

[cdc.gov/eis](https://cdc.gov/eis)  
[cdc.gov/fellowships](https://cdc.gov/fellowships)

