
Lineage-Specific Real-Time Reverse Transcription PCR for Yellow Fever Virus Outbreak Surveillance, Brazil

Carlo Fischer,¹ Maria C. Torres,¹ Pranav Patel,
Andres Moreira-Soto, Ernest A. Gould,
Rémi N. Charrel, Xavier de Lamballerie,
Rita Maria Ribeiro Nogueira, Patricia C. Sequeira,
Cintia D.S. Rodrigues, Beate M. Kümmerer,
Christian Drosten, Olfert Landt,
Ana Maria Bispo de Filippis, Jan Felix Drexler

The current yellow fever outbreak in Brazil prompted widespread yellow fever virus (YFV) vaccination campaigns, imposing a responsibility to distinguish between vaccine- and wild-type YFV-associated disease. We developed novel multiplex real-time reverse transcription PCRs that differentiate between vaccine and American wild-type YFV. We validated these highly specific and sensitive assays in an outbreak setting.

Yellow fever virus (YFV) is a mosquito-borne member of the genus *Flavivirus* within the family *Flaviviridae* (online Technical Appendix Figure 1, panel A, <https://wwwnc.cdc.gov/EID/article/23/11/17-1131-Techapp1.pdf>) that is endemic to Africa and South America (1). Within YFV, 2 American and at least 3 African genotypes can be differentiated (2). The American YFV genotypes evolved from ancestral African viruses several hundred years ago and now are found only in South America (3).

In December 2016, Brazil reported the country's largest yellow fever (YF) outbreak in decades. Through May 31, 2017, a total of 3,240 suspected cases were reported, including 435 deaths (4). The geographically widespread

outbreak was caused by the American genotype 1 (online Technical Appendix Figure 1, panel B) (5). In response to the outbreak, authorities launched large-scale vaccination campaigns aimed at distributing >20 million doses of YFV vaccine (6). Two different live-attenuated vaccines are being deployed. Most contain the vaccine strain 17DD, produced in Brazil (7). International authorities are deploying another 3.5 million doses of the standard vaccine strain, 17D (6). Both vaccine strains originate from the same parental strain, Asibi, and represent the West African genotype 2 (online Technical Appendix Figure 1, panel B).

While YFV vaccines are considered safe, rare vaccine-associated adverse events (YF-VAAE) can occur (8). Viscerotropic YF-VAAE symptoms can overlap those of YF disease (9). In YFV-endemic regions, it is essential to distinguish between YF-VAAE and wild-type YFV infection (10). Routine diagnostic procedures can take several days, usually requiring 2 separate steps, detection and strain characterization by nucleotide sequencing. Here, we present 2 highly sensitive real-time reverse transcription PCRs (RT-PCRs) designed to detect and discriminate between YFV vaccine and American wild-type (hereafter referred to as wild-type) strains within 1 hour.

The Study

We followed 2 rationales for real-time RT-PCR design. First, a small number of oligonucleotides per assay can be beneficial in resource-limited settings. Therefore, we designed 5 different single-target assays using primers capable of simultaneously amplifying vaccine and wild-type YFV strains. However, these criteria restricted the ability to design optimal oligonucleotides. Therefore, we designed 2 additional dual-target assays that target 2 separate genomic regions in which vaccine and wild-type strains differ sufficiently from one another (Figure 1, panel A). Vaccine and wild-type strains were generally discriminated by lineage-specific hydrolysis probes within a single tube reaction, incapable of detecting the heterologous lineage due to high numbers of nucleotide mismatches under oligonucleotide binding sites (Figure 1, panel B) (12).

We selected the 2 most sensitive single- and dual-target assays on the basis of preliminary experiments using full viral RNA of wild-type and vaccine strains (Table; online Technical Appendix Figure 2). For assay validation

Author affiliations: University of Bonn Medical Centre, Bonn, Germany (C. Fischer, A. Moreira-Soto, B.M. Kümmerer); German Centre for Infection Research (DZIF) (C. Fischer, C. Drosten, J.F. Drexler); Instituto Oswaldo Cruz, Rio de Janeiro, Brazil (M.C. Torres, R.M.R. Nogueira, P.C. Sequeira, C.D.S. Rodrigues, A.M.B. de Filippis); TIB MOLBIOL Syntheselabor GmbH, Berlin, Germany (P. Patel, O. Landt); Charité—Universitätsmedizin Berlin, corporate member of Freie Universität Berlin, Humboldt-Universität zu Berlin, and Berlin Institute of Health, Institute of Virology, Germany (A. Moreira-Soto, C. Drosten, J.F. Drexler); Aix-Marseille University, Marseille, France (E.A. Gould, R.N. Charrel, X. de Lamballerie); Institut Hospitalo Universitaire Méditerranée-Infection, Marseille (R.N. Charrel, X. de Lamballerie)

DOI: <https://doi.org/10.3201/eid2311.171131>

¹These authors contributed equally to this article.

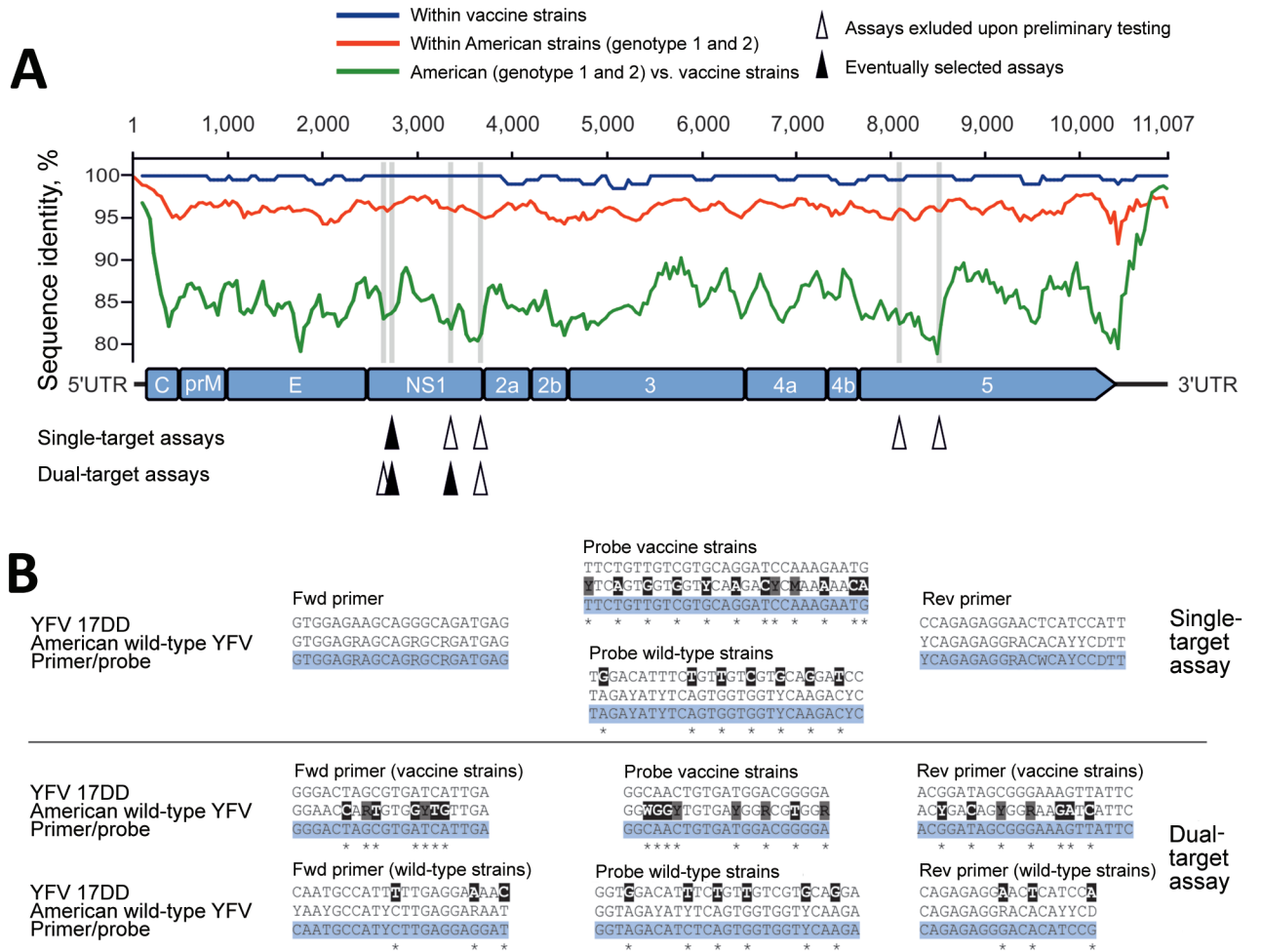


Figure 1. Design of new real-time RT-PCRs for differentiation between vaccine and wild-type YFV. A) YFV genomic representation (GenBank accession no. DQ100292) with real-time RT-PCR target sites, indicated by arrowheads, and identity plot of all complete YFV sequences available in GenBank as of May 24, 2017. Plots were done in SSE version 1.2 (11) using a sliding window of 200 and a step size of 40 nt. Target sites of the eventually selected assays are indicated by filled arrowheads; all other designed assays excluded after preliminary testing by open arrowheads. Of the real-time RT-PCR assays developed in this study, 1 assay targets only 1 genomic region, whereas the other assay targets 2 different genomic regions of vaccine and wild-type YFV strains. Both PCRs are duplex assays in which vaccine and wild-type YFV RNA are detected by lineage-specific probes. We called the assay targeting only 1 genomic region a single-target assay and the assay targeting 2 separate genomic regions a dual-target assay, even though the term dual-target commonly refers to detection of 2 different genes of a single pathogen, which is not the case in this study. B) Alignment of real-time RT-PCR oligonucleotide binding sites with YFV 17DD and American wild-type strains. The 100% consensus sequences were generated in Geneious (Biomatters Ltd., Auckland, New Zealand) and mapped to respective PCR primers and probes. Potential nucleotide mismatches are indicated by asterisks. D = A/G/T, M = A/C, R = A/G, W = A/T, Y = C/T. Black indicates a mismatch with all American wild-type strains, gray a mismatch with some American wild-type strains, based on the complete genetic information of American YFV strains and YFV vaccine strains available in GenBank as of March 24, 2017. C, capsid; E, envelope; Fwd, Forward; NS, nonstructural protein; prM, precursor membrane; Rev, reverse; RT-PCR, reverse transcription PCR; UTR, untranslated region; YFV, yellow fever virus.

and quantification, we designed 2 in vitro transcripts (IVTs) based on the vaccine strain 17DD and an outbreak strain from Brazil (5), as described previously (12).

The 95% lower limit of detection of the single- and dual-target assays ranged from 4.0 to 8.8 RNA copies/reaction for vaccine and wild-type YFV strains (online Technical Appendix Figure 3). Discrimination between vaccine and wild-type strains was reliable even at high concentrations of IVTs

and full viral RNA in the range of 10^6 copies/reaction. Assay specificity was assessed using a set of 39 high-titer flavivirus cell culture isolates (online Technical Appendix Figure 1, panel A), all of which tested negative in the novel assays.

Hypothetically, near-simultaneous infection with wild-type YFV and vaccination may occur in the outbreak setting in Brazil. In the case of co-occurrence of vaccine and wild-type YFV within a single sample, 1 target may

Table. Oligonucleotides for new yellow fever virus real-time RT-PCRs*

Oligonucleotide name	Primer/probe†	Sequence, 5' → 3'‡	Target genomic domain, no. bases	Orientation
Single-target assay				
YFVsingle-fwd	Primer	GTGGAGRAGCAGRGCRGATGAG	2,653–2,674	+
YFVsingle-rv	Primer	AAHGGRTGWGTYCCTCTCTGR	2,743–2,763	-
YFVsingleP-vac	Probe (FAM)	TTCTGTTGTCGTGCAGGATCCAAAGAATG	2,710–2,738	+
YFVsingleP-wt	Probe (YAK)	TAGAYATYTCAGTGGTGGTYCAAGACYC	2,703–2,730	+
Dual-target assay				
YFVdual-fwd-vac	Primer	GGGACTAGCGTGATCATTGA	3,296–3,315	+
YFVdual-rv-vac	Primer	GAATAACTTTCCCGCTATCCGT	3,356–3,377	-
YFVdualP-vac	Probe (FAM)	TCCCCGTCCATCACAGTTGCC	3,317–3,337	-
YFVdual-fwd-wt	Primer	CAATGCCATYCTTGAGGAGAAT	2,677–2,698	+
YFVdual-rv-wt	Primer	CGGATGTGTCCCTCTCTG	2,744–2,761	-
YFVdualP-wt	Probe (YAK)	TCTTGRACCACCACTGAGATGTCTACC	2,701–2,727	-

*25 μ L real-time RT-PCR reactions were performed using the Superscript III one-step RT-PCR system with Platinum Taq polymerase (Thermo Fisher Scientific, Darmstadt, Germany). Target genomic domain positions according to GenBank reference genome NC_002031. Reactions were set up with 5 μ L of RNA; 12.5 μ L of 2 \times reaction buffer; 0.4 μ L of a 50 mM magnesium sulfate solution (Superscript III one-step RT-PCR system with Platinum Taq polymerase kit, Thermo Fisher Scientific); 1 μ g of nonacetylated bovine serum albumin; and 1 μ L enzyme. Single-target assay reactions contained 400 nM forward primer, 600 nM reverse primer, and 280 nM of each probe. Dual-target assay reactions contained 400 nM of each primer and 220 nM of each probe. RT-PCR, reverse transcription PCR.

†Probes are labeled with either fluorescein amidite (FAM) or Yakima Yellow (YAK) at the 5'-end and a Black Hole Quencher (TIB MOLBIOL Syntheselabor GmbH, Berlin, Germany) at the 3'-end. Primer concentrations were optimized using the YFV vaccine strain IVT and the wild-type YFV IVT. Amplification involved 50°C for 15 min, followed by 95°C for 3 min and 45 cycles of 95°C for 15 s and 58°C for 30 s with fluorescence read at the 58°C annealing/extension step on a LightCycler 480 thermocycler (Roche, Basel, Switzerland).

‡H = A/C/T, M = A/C, R = A/G, W = A/T, Y = C/T.

occur in relatively higher concentrations than, and thus outcompete amplification of, the other target, resulting in an incomplete test result. We observed no target competition with the dual-target assay even in the presence of high concentrations of the heterologous RNA (Figure 2, panel A). In contrast, the single-target assay showed decreased sensitivity at $\leq 1,000$ copies/reaction upon the presence of 100–500-fold higher concentrations of the heterologous target.

Commonly used clinical specimens for YFV diagnostics may contain substances that can interfere with PCR (13). To assess our assays' performance in different clinical matrices, we used human plasma and urine previously tested negative for YFV and spiked them with 10^1 – 10^6 copies/mL of either vaccine or wild-type YFV. Three replicates of each spiked specimen were purified individually and tested by using our PCRs and a YFV reference assay (13). We detected samples containing $\geq 1,000$ copies/mL in all replicates irrespective of the clinical matrix (Figure 2, panel B). Detection of samples containing ≤ 100 copies/mL was unreliable in all 3 assays. As exemplified before for Zika virus, final RNA copy numbers in eluates used for RT-PCR will depend on the RNA extraction protocol, illustrating that even assays with analytical sensitivity in the single-copy range may not correctly detect weakly positive clinical specimens (12).

Clinical specimens may differ from spiked materials, and assay performance needs to be assessed in an outbreak context. Therefore, we compared the new assays to the reference assay (13) in a Brazilian flavivirus reference laboratory, using different clinical specimens obtained from 11 YF cases previously confirmed by nucleotide sequencing as wild-type YFV infections. The sensitivity of the dual-target

assay was identical to that of the reference assay, whereas the single-target assay was slightly less sensitive (Figure 2, panel C). Identification of wild-type YFV was reliable in all cases, consistent with specific detection of lineages even in highly positive clinical specimens.

Conclusions

The new PCRs we describe enable YFV detection with diagnostic sensitivity. The dual-target assay was superior to the single-target assay in sensitivity and robustness to target competition. However, the single-target assay may be advantageous in resource-limited settings and may be more convenient for multiplex usage in combination with assays targeting co-circulating arboviruses, such as chikungunya, Zika, and dengue viruses. Beyond rapid test results, the real-time RT-PCR-based protocols provide considerably higher sensitivity than protocols aiming at generating longer PCR amplicons necessary for strain discrimination by nucleotide sequencing, enabling conclusive results even when virus concentrations in specimens are low or when these materials are available only in limited quantity. Of note, PCR-based YFV detection is most reliable 5–7 days after symptom onset, during the viremic phase. Reliable YFV surveillance should thus include serologic methods. However, serologic tests used for virologic diagnostics cannot discriminate between vaccination and wild-type YFV infection.

Of note, our novel assays are limited to vaccine and American YFV wild-type strains. West African wild-type strains would be detected by our YFV vaccine assays due to the close genetic relatedness between these strains, but our assays are not suitable to detect the genetically diverse Eastern and Central African wild-type strains. If needed, one

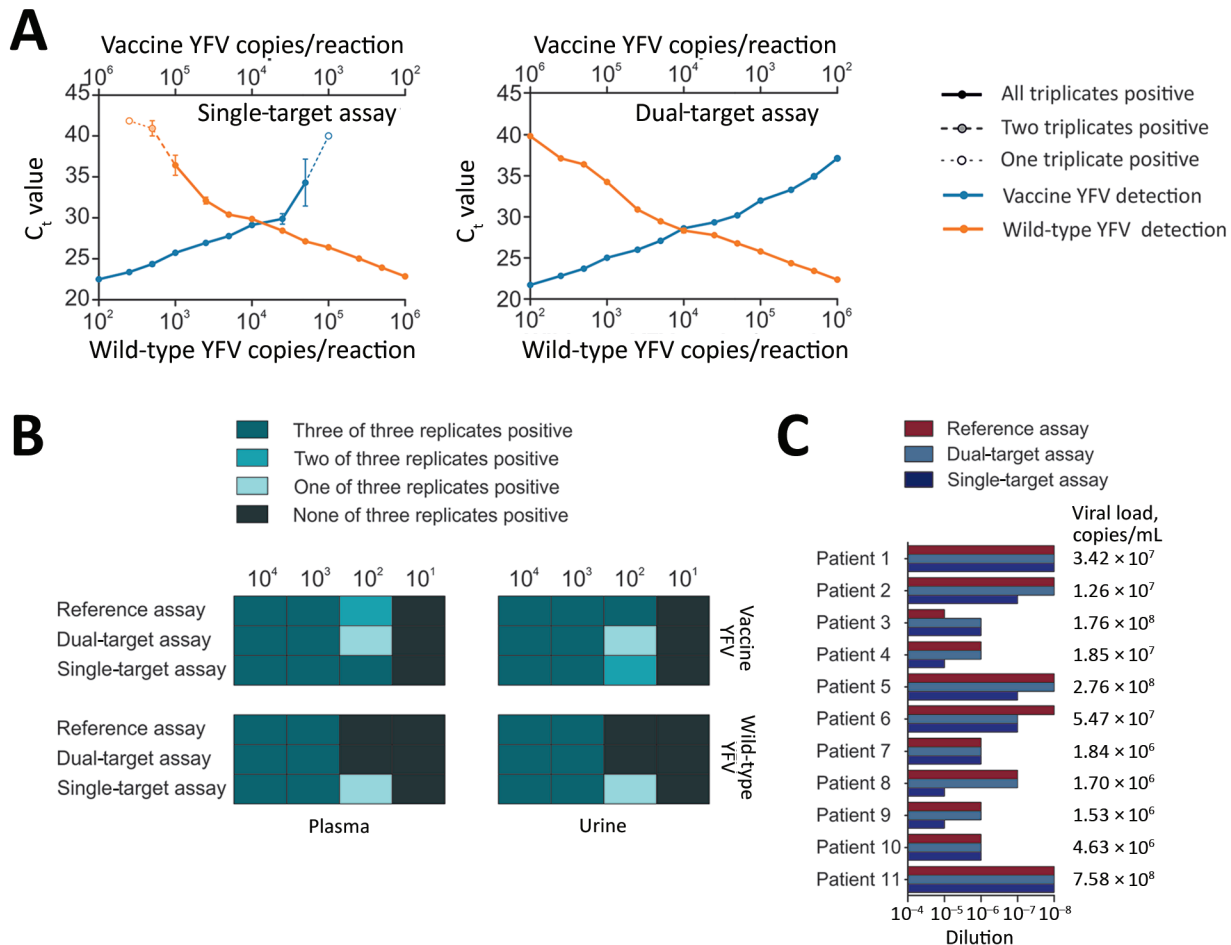


Figure 2. Validation of new real-time RT-PCRs for differentiation between vaccine and wild-type YFV. A) Effects of target competition on YFV real-time RT-PCRs. Mean cycle threshold (C_t) values are plotted against IVT concentrations. Triplicates were tested for each datum point. B) Validation of the assays with clinical matrices. Spiked viruses were vaccine strain 17D and the American genotype 2 wild-type strain BOL88/1999. RNA purification was performed using the MagNA Pure 96 Viral NA Small Volume Kit (Roche, Basel, Switzerland) according to the manufacturer's instructions. C) Clinical validation. Clinical specimens (serum, liver, whole blood, and plasma) from 11 YFV-infected patients were tested. RNA was extracted using the MagMAX Pathogen RNA/DNA Kit (Thermo Fisher, São Paulo, Brazil) and serial dilutions of the RNA were tested using the new assays and a YFV reference assay (12). Viral loads were determined for clinical specimens using a commercially available quantitative real-time RT-PCR (Bio Gene Research Yellow Fever PCR kit; Bioclin, Minas Gerais, Brazil), following the manufacturer's instructions. Standard curves and sample copies per milliliter were calculated using an in-house IVT standard. IVT, in vitro transcript; RT-PCR, reverse transcription PCR; YFV, yellow fever virus.

could extend our assays by an additional primer/probe combination targeting the Eastern and Central African genotypes.

Recently, the first attenuated live dengue virus vaccine was approved in several countries, including Brazil (14). Inactivated Japanese encephalitis virus vaccines are currently replaced by attenuated live vaccines in Asia (15), and an attenuated live West Nile virus vaccine has completed a phase II clinical trial (16). Large-scale deployment of these vaccines will raise the need to discriminate between potential vaccination-associated events and wild-type virus infection in symptomatic patients. Our work with YFV may provide a diagnostic blueprint for establishing and validating suitable

methods for differentiating between vaccine and wild-type viruses for these other viruses as well.

Acknowledgments

We thank Monika Eschbach-Bludau, Janett Wieseler, and Tobias Bleicker. Positive controls for reaction control and quantification are available at the EVAg portal (<https://www.european-virus-archive.com>).

This work was partially supported by the European Union's Horizon 2020 research and innovation program (ZIKAlliance, grant agreement no. 734548; EVAg, grant agreement no. 653316; Zikaplan, grant agreement no. 734584); the German Centre for Infection Research through the ZIKApah project; the Faperj

(Fundação de Amparo à Pesquisa do estado do Rio de Janeiro, grant no. E-18/2015TXB); and the Secretaria de Vigilância em Saúde/Coordenação Geral de Laboratórios de Saúde Pública/Ministério da Saúde do Brasil.

Mr. Fischer is a PhD student at the Institute of Virology of the University of Bonn Medical Centre and the German Centre for Infection Research. His main research interests are diagnostics of emerging arboviruses.

References

- Gardner CL, Ryman KD. Yellow fever: a reemerging threat. *Clin Lab Med.* 2010;30:237–60. <http://dx.doi.org/10.1016/j.cll.2010.01.001>
- Beasley DW, McAuley AJ, Bente DA. Yellow fever virus: genetic and phenotypic diversity and implications for detection, prevention and therapy. *Antiviral Res.* 2015;115:48–70. <http://dx.doi.org/10.1016/j.antiviral.2014.12.010>
- Bryant JE, Holmes EC, Barrett AD. Out of Africa: a molecular perspective on the introduction of yellow fever virus into the Americas. *PLoS Pathog.* 2007;3:e75. <http://dx.doi.org/10.1371/journal.ppat.0030075<jm>>
- Ministério da Saúde Brazil. Informe especial febre amarela no Brasil Nº 01/2017: Ministério da Saúde 2017 [cited 2017 Sep 1]. <http://portalarquivos.saude.gov.br/images/pdf/2017/marco/18/Informe-especial-COES-FA.pdf>
- Bonaldo MC, Gómez MM, Dos Santos AA, Abreu FVS, Ferreira-de-Brito A, Miranda RM, et al. Genome analysis of yellow fever virus of the ongoing outbreak in Brazil reveals polymorphisms. *Mem Inst Oswaldo Cruz.* 2017;112:447–51. <http://dx.doi.org/10.1590/0074-02760170134>
- World Health Organization. WHO dispatched 3.5 million doses of yellow fever vaccine for outbreak response in Brazil. 2017 30 March 2017 [cited 2017 Aug 30]. <http://www.who.int/csr/disease/yellowfev/vaccination-in-Brazil/en/>
- de Melo AB, da Silva MP, Magalhães MC, Gonzales Gil LH, Freese de Carvalho EM, Braga-Neto UM, et al. Description of a prospective 17DD yellow fever vaccine cohort in Recife, Brazil. *Am J Trop Med Hyg.* 2011;85:739–47. <http://dx.doi.org/10.4269/ajtmh.2011.10-0496>
- Thomas RE. Yellow fever vaccine-associated viscerotropic disease: current perspectives. *Drug Des Devel Ther.* 2016;10:3345–53. <http://dx.doi.org/10.2147/DDDT.S99600>
- Monath TP, Vasconcelos PF. Yellow fever. *J Clin Virol.* 2015;64:160–73. <http://dx.doi.org/10.1016/j.jcv.2014.08.030>
- Boyd AT, Dombaxe D, Moreira R, Oliveira MS, Manuel E, Colorado CN, et al. Notes from the field: investigation of patients testing positive for yellow fever viral RNA after vaccination during a mass yellow fever vaccination campaign—Angola, 2016. *MMWR Morb Mortal Wkly Rep.* 2017;66:282–3. <http://dx.doi.org/10.15585/mmwr.mm6610a5>
- Simmonds P. SSE: a nucleotide and amino acid sequence analysis platform. *BMC Res Notes.* 2012;5:50–9. <http://dx.doi.org/10.1186/1756-0500-5-50>
- Corman VM, Rasche A, Baronti C, Aldabbagh S, Cadar D, Reusken CB, et al. Assay optimization for molecular detection of Zika virus. *Bull World Health Organ.* 2016;94:880–92. <http://dx.doi.org/10.2471/BLT.16.175950>
- Domingo C, Patel P, Yillah J, Weidmann M, Méndez JA, Nakouné ER, et al. Advanced yellow fever virus genome detection in point-of-care facilities and reference laboratories. *J Clin Microbiol.* 2012;50:4054–60. <http://dx.doi.org/10.1128/JCM.01799-12>
- World Health Organization. Dengue vaccine: WHO position paper—July 2016. *Wkly Epidemiol Rec.* 2016;91:349–64.
- Hegde NR, Gore MM. Japanese encephalitis vaccines: Immunogenicity, protective efficacy, effectiveness, and impact on the burden of disease. *Hum Vaccin Immunother.* 2017;13:1320–1337. <http://dx.doi.org/10.1080/21645515.2017.1285472>
- Dayan GH, Bevilacqua J, Coleman D, Buldo A, Risi G. Phase II, dose ranging study of the safety and immunogenicity of single dose West Nile vaccine in healthy adults ≥ 50 years of age. *Vaccine.* 2012;30:6656–64. <http://dx.doi.org/10.1016/j.vaccine.2012.08.063>

Addresses for correspondence: Ana Maria Bispo de Filippis, Laboratório de Flavivírus, Instituto Oswaldo Cruz, Pavilhão Hélio e Peggy Pereira, Avenida Brasil, 4365, Manguinhos-Rio de Janeiro, Brazil; email: abispo@ioc.fiocruz.br; Jan Felix Drexler, Helmut-Ruska-Haus, Institute of Virology, Campus Charité Mitte, Charitéplatz 1, 10117 Berlin, Germany; email: felix.drexler@charite.de

Get the content you want delivered to your inbox.

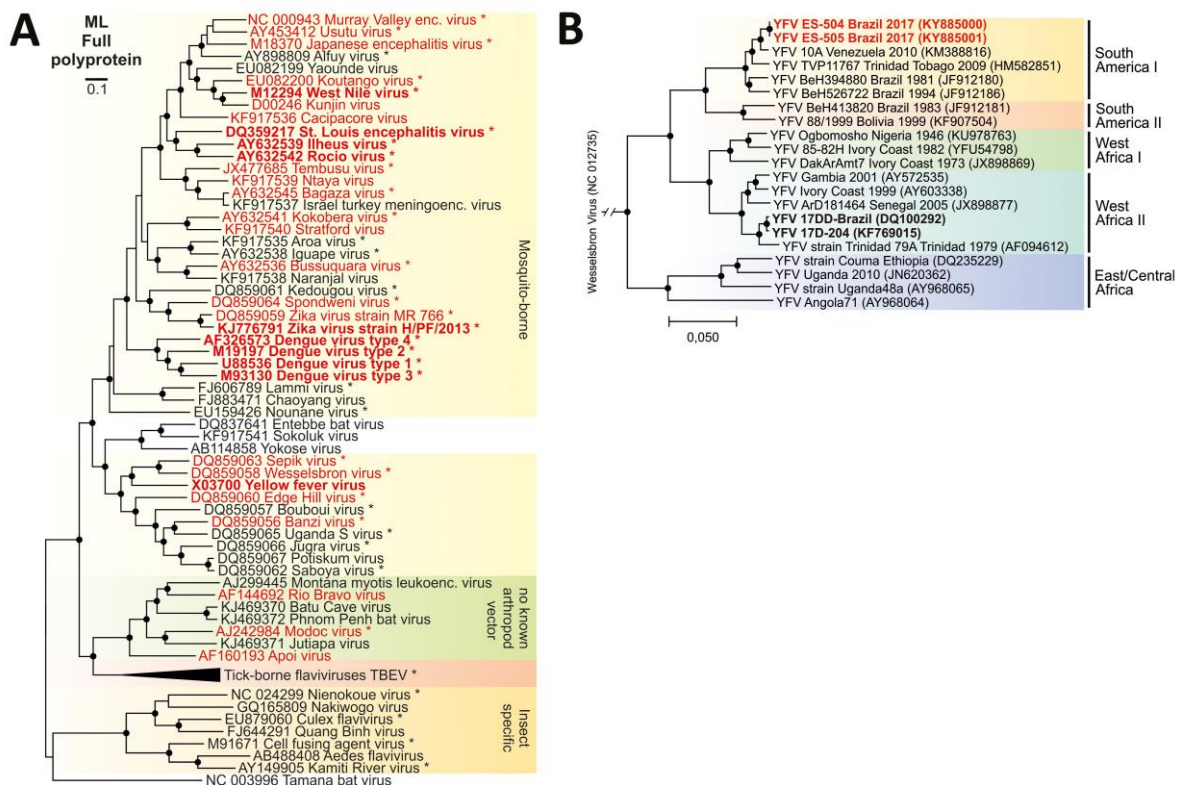


- Table of Contents
- Podcasts
- Ahead of Print articles
- CME
- Specialized Content

Online subscription: wwwnc.cdc.gov/eid/subscribe/htm

Lineage-Specific Real-Time RT-PCR for Yellow Fever Virus Outbreak Surveillance, Brazil

Technical Appendix



Technical Appendix Figure 1. Genetic relationships of flaviviruses and yellow fever virus genotypes.

A) Maximum-likelihood phylogeny of the full polyprotein genes of selected flaviviruses. Red indicates human pathogenic viruses. Bold indicates viruses of medical importance in Brazil. Asterisks indicate viruses that were used for specificity testing of real-time RT-PCR assays. The scale bar indicates evolutionary distances of 0.1 differences per site. The HKY nucleotide substitution model was used with a complete deletion option in MEGA7. Black circles at nodes represent over 75% statistical support of grouping from 1,000 bootstrap replicates. B) Neighbor-joining phylogeny of complete coding sequences of representative Yellow Fever virus strains identified by strain name, country, year of isolation (where applicable) and GenBank accession number. Bold and red type indicates sequences of the current outbreak in Brazil (5). Bold indicates vaccine strains. The tree was generated using a percentage distance substitution model in MEGA7 and the complete deletion option. The final dataset encompassed 11,139 nt. Black circles at nodes represent over 98% support of grouping from 1,000 bootstrap replicates. The scale bar indicates genetic distance of 5%. The tree was rooted by Wesselsbron virus (branches truncated as indicated by slashed lines).

Supplementary Figure S1. Bench protocol for real-time RT-PCR assays



CharitéCentrum für diagnostische und präventive Labormedizin

Charité | Campus Mitte | 10098 Berlin

Institut für Virologie
-HELMUT-RUSKA-HAUS-
Univ.-Prof. Dr. med. J. F. Drexler

Tel. +49-30-450-52 50 92
Fax +49-30-450-752 59 07
felix.drexler@charite.de
http://virologie-ccm.charite.de/

Development and clinical validation of lineage-specific real-time RT-PCR assays for Yellow Fever virus surveillance

Single-target and dual-target assay

Example formulation: Thermo Fisher SuperScriptIII OneStep RT-PCR System with Platinum Taq DNA Polymerase

Single target assay		Dual target assay	
MasterMix	single rxn [μ L]	MasterMix	single rxn [μ L]
H ₂ O (RNAse free)	1.2	H ₂ O (RNAse free)	-
MgSO ₄ (50mM)	0.4	MgSO ₄ (50mM)	0.4
2x Reaction mix	12.5	2x Reaction mix	12.5
BSA (1 mg/ml)*	1	BSA (1 mg/ml)*	1
Fwd primer (10 μ M)	1	Fwd primer 1 (10 μ M)	1
Rev primer (10 μ M)	1.5	Fwd primer 2 (10 μ M)	1
Probe 1 (10 μ M)	0.7	Rev primer 1 (10 μ M)	1
Probe 2 (10 μ M)	0.7	Rev primer 2 (10 μ M)	1
SSIII/Taq EnzymeMix	1	Probe 1 (10 μ M)	0.55
		Probe 2 (10 μ M)	0.55
		SSIII/Taq EnzymeMix	1
	20		20
Template RNA	5	Template RNA	5

*non-acetylated. This component is only necessary if using glass capillary LightCycler. Can be replaced with water in plastic vessel machines such as ABI 7500, LC 480, etc.

Thermocycling conditions

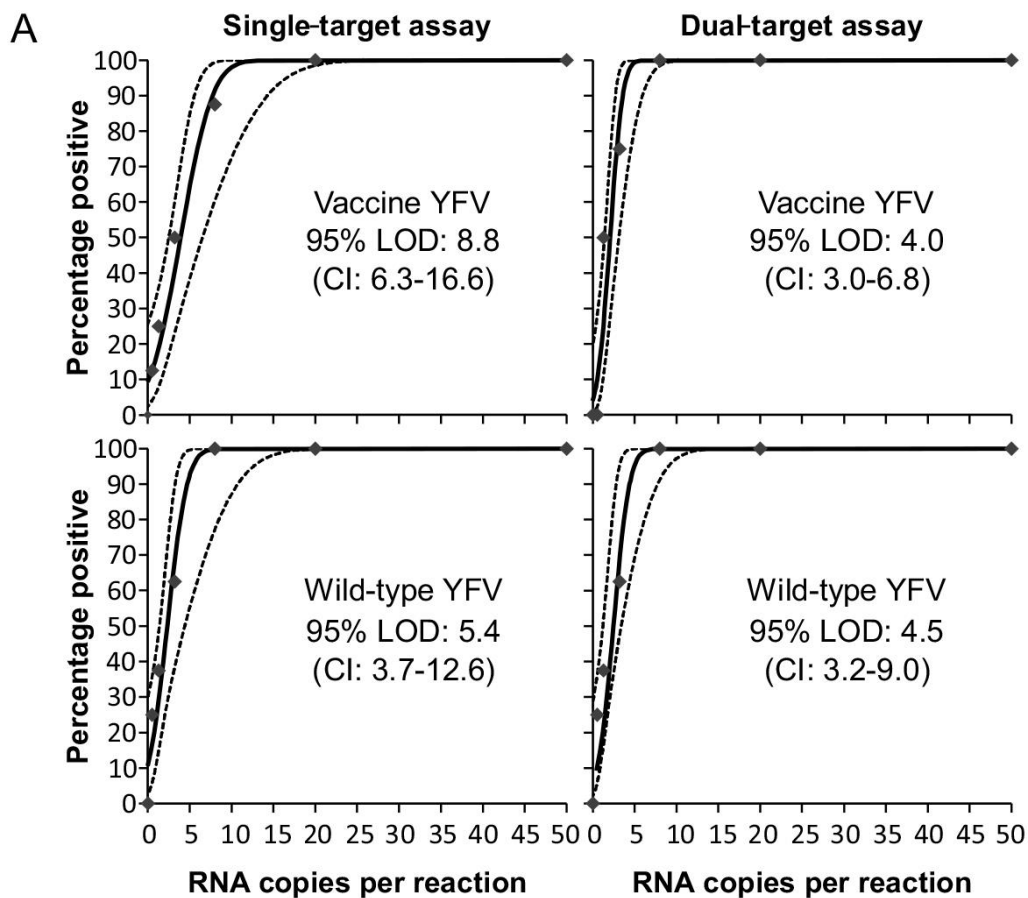
50°C	15'	
95°C	3'	
95°C	15"	45x
58°C	30"	
40°C	30"	

Primers/probe (5'-3')

YFVsingle-fwd	GTGGAGRAGCAGRGCRGATGAG
YFVsingleP-vac	6-FAM-TTCTGTTGTCGTGCAGGATCCAAAGAATG-BBQ
YFVsingleP-wt	YAK-TAGAYATYTCAGTGGTGGTYCAAGACYC-BBQ
YFVsingle-rv	AAHGGRTGWGTYCCTCTCTGR
YFVdual-fwd-vac	GGGACTAGCGTGATCATTGA
YFVdualP-vac	6FAM-TCCCCGTCCATCACAGTTGCC-BBQ
YFVdual-rv-vac	GAATAACTTTCCCGCTATCCGT
YFVdual-fwd-wt	CAATGCCATYCTTGAGGAGAAT
YFVdualP-wt	YAK-TCTTGRACCACCAGATGTCTACC-BBQ
YFVdual-rv-wt	CGGATGTGCCCTCTCTG

CHARITÉ - UNIVERSITÄTSMEDIZIN BERLIN
Gliedkörperschaft der Freien Universität Berlin und der Humboldt-Universität zu Berlin
Charitéplatz 1 | 10117 Berlin | Telefon +49 30 450-50 | www.charite.de

Technical Appendix Figure 2. Bench protocol for real-time RT-PCR assays.



Technical Appendix Figure 3. Analytical sensitivity of YFV real-time RT-PCR assays. CI: confidence interval; LOD: lower limit of detection. Probability of detection determined in probit regression analyses is plotted against IVT copies/reaction in 8 replicates. Diamonds represent observed positive results. Solid line shows predicted proportion of positive results at a given IVT input; dashed line shows 95% CI. In-vitro transcripts were designed upon strain 17DD and the Brazilian outbreak strain ES-505, GenBank accession numbers DQ100292 and KY885001, respectively.