

Autochthonous *Leishmania siamensis* in Horse, Florida, USA

Technical Appendix

Multiple alignment with Fast Fourier Transform of *Leishmania siamensis* ITS1 sequences. Nucleotides with differences are shown in red.

```
Horse FL ATTACA-CCAAAAACATACAGG-TAGAGA-GTAGTAGAATACATCTACTCGGGGAGGCATGTTTTTCCG-ATATGCCTTTCCACATACACAAAACAGCAATATATATGT
Bovine|GQ281282 ATTACA-CCAAAAACATACAGGCTAGAGA-GTAGTAGAATACATCTACTCGGGGAGGCATGTTTTTCCG-ATATGCCTTTCCACATACACAAAACAGCAATATATATGT
Horse|GQ281281 ATTACA-CCAAAAACATACAGGCTAGAGA-GTAGTAGAATACATCTACTCGGGGAGGCATGTTTTTCCG-ATATGCCTTTCCACATACACAAAACAGCAATATATATGT
Human|JQ001751 ATTACA-CCAAAAACATACAGG-TAGAGA-GTAGTAGAATACATCTACTCGGGGAGGCATGTTTTTCCG-ATATGCCTTTCCACATACACAAAACAGCAATATATATGT
Human|JQ001752 ATTACA-CCAAAAACATACAGG-TAGAGA-GTAGTAGAATACATCTACTCGGGGAGGCATGTTTTTCCG-ATATGCCTTTCCACATACACAAAACAGCAATATATATGT
Human|GQ293226 ATTACA-CCAAAAACATACAGG-TAGAGA-GTAGTAGAATACATCTACTCGGGGAGGCATGTTTTTCCG-ATATGCCTTTCCACATACACAAAACAGCAATATATATGT
Human|GQ226034 ATTACA-CCAAAAACATACAGG-TAGAGA-GTAGTAGAATACATCTACTCGGGGAGGCATGTTTTTCCG-ATATGCCTTTCCACATACACAAAACAGCAATATATATGT
Human ref|EF200012 ATTACA-CCAAAAACATACAGG-TAGAGA-GTAGTAGAATACATCTACTCGGGGAGGCATGTTTTTCCG-ATATGCCTTTCCACATACACAAAACAGCAATATATATGT
```

```
Horse FL ATATATATACGTATATTGCTATACCCAAAAACCATACCGTAAAAAGCAAAAAGGCCGGTCGACGCCAAATGCCGCGCGTATACAGTGGAAAAGTCCGTTTCGTTACGGCTCTTT
Bovine|GQ281282 ATATATATACGTATATTGCTATACCCAAAAACCATACCGTAAAAAGCAAAAAGGCCGGTCGACGCCAAATGCCGCGCGTATACAGTGGAAAAGTCCGTTTCGTTACGGCTCTTT
Horse|GQ281281 ATATATATACGTATATTGCTATACCCAAAAACCATACCGTAAAAAGCAAAAAGGCCGGTCGACGCCAAATGCCGCGCGTATACAGTGGAAAAGTCCGTTTCGTTACGGCTCTTT
Human|JQ001751 ATATATATACGTATATTGCTATACCCAAAAACCATACCGTAAAAAGCAAAAAGGCCGGTCGACGCCAAATGCCGCGCGTATACAGTGGAAAAGTCCGTTTCGTTACGGCTCTTT
Human|JQ001752 ATATATATACGTATATTGCTATACCCAAAAACCATACCGTAAAAAGCAAAAAGGCCGGTCGACGCCAAATGCCGCGCGTATACAGTGGAAAAGTCCGTTTCGTTACGGCTCTTT
Human|GQ293226 ATATATATACGTATATTGCTATACCCAAAAACCATACCGTAAAAAGCAAAAAGGCCGGTCGACGCCAAATGCCGCGCGTATACAGTGGAAAAGTCCGTTTCGTTACGGCTCTTT
Human|GQ226034 ATATATATACGTATATTGCTATACCCAAAAACCATACCGTAAAAAGCAAAAAGGCCGGTCGACGCCAAATGCCGCGCGTATACAGTGGAAAAGTCCGTTTCGTTACGGCTCTTT
Human ref|EF200012 ATATATATACGTATATTGCTATACCCAAAAACCATACCGTAAAAAGCAAAAAGGCCGGTCGACGCCAAATGCCGCGCGTATACAGTGGAAAAGTCCGTTTCGTTACGGCTCTTT
```

```
Horse FL CTCTCTCGCGGGTGTGTGTGGATAACGGCTCACATAACGTGTGCGCATGGA-TGACTTGGCTTCCTATTTTCGTTGAAGAACGCAGTA
Bovine|GQ281282 CTCTCTCGCGGGTGTGTGTGGATAACGGCTCACATAACGTGTGCGCATGGA-TGACTTGGCTTCCTATTTTCGTTGAAGAACGCAGTA
Horse|GQ281281 CTCTCTCGCGGGTGTGTGTGGATAACGGCTCACATAACGTGTGCGCATGGA-TGACTTGGCTTCCTATTTTCGTTGAAGAACGCAGTA
Human|JQ001751 CTCTCTCGCGGGTGTGTGTGGATAACGGCTCACATAACGTGTGCGCATGGA-TGACTTGG-----
Human|JQ001752 CTCTCTCGCGGGTGTGTGTGGATAACGGCTCACATAACGTGTGCGCATGGA-TGACTTGG-----
Human|GQ293226 CTCTCTCGCGGGTGTGTGTGGATAACGGCTCACATAACGTGTGCGCATGGA-TGACTTGG-----
Human|GQ226034 CTCTCTCGCGGGTGTGTGTGGATAACGGCTCACATAACGTGTGCGCATGGA-TGACTTGG-----
Human ref|EF200012 CTCTCTCGCGGGTGTGTGTGGATAACGGCTCACATAACGTGTGCGCATGGA-TGACTTGGCTTCCTATTTTCGTTGAAGAACGCAGTA
```

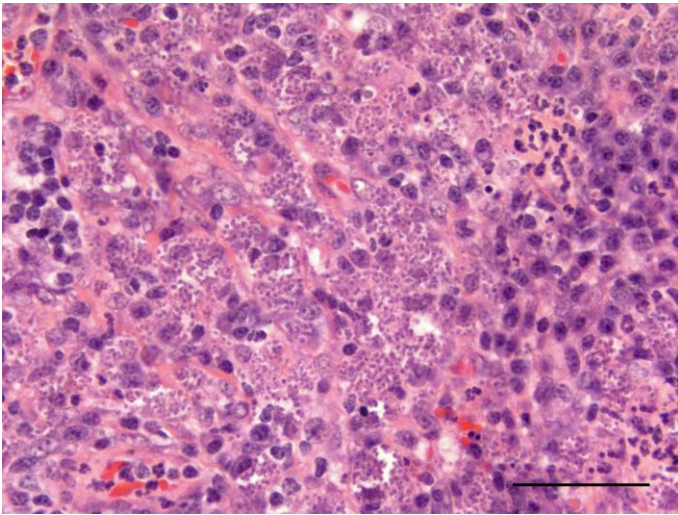


Figure 1. Histologic section of an ulcerated mass from a horse with cutaneous leishmaniasis. Macrophage cytoplasm contains myriad protozoa, each with a small nucleoid and a smaller kinetoplast. Original magnification $\times 50$.

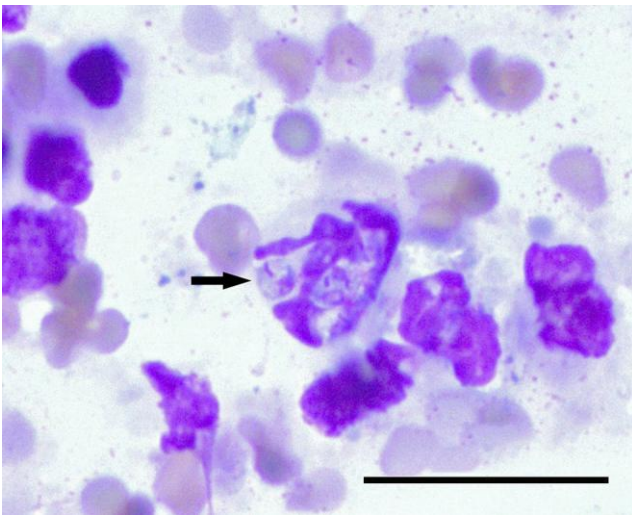


Figure 2. Fine needle aspirate of an ulcerated mass from a horse with cutaneous leishmaniasis exhibiting an intracellular amastigote (arrow). Original magnification $\times 100$.