

# GIS Quick Tips

Presented by CDC's Division of Heart Disease and Stroke Prevention GIS Exchange

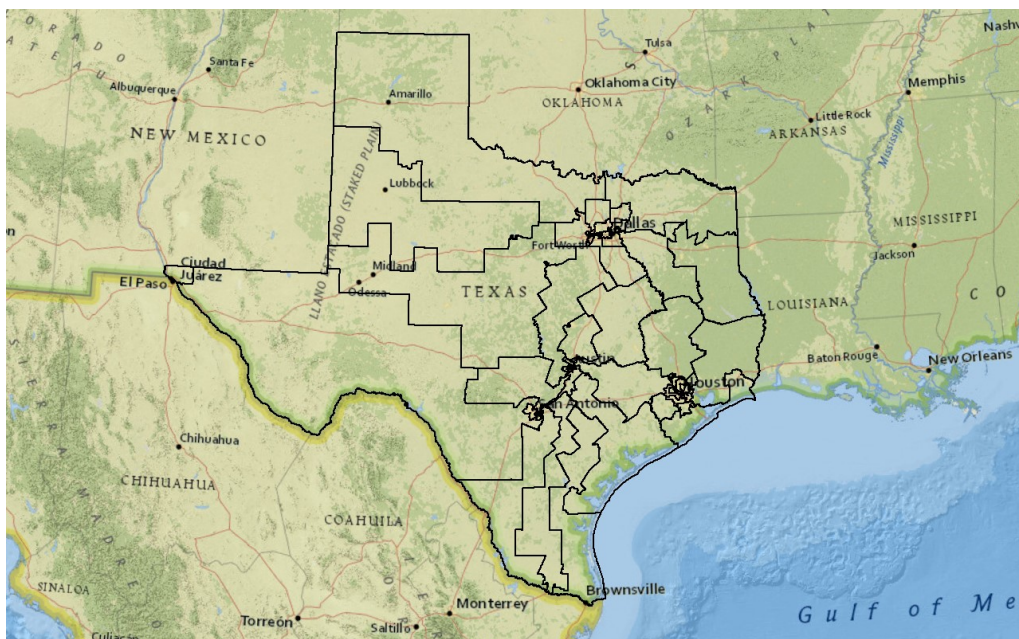
For more information visit the GIS Exchange website:

<https://www.cdc.gov/dhdsp/maps/gisx/index.html>

Utilize the Data Frame properties Clip function to temporarily clip data to shape.

When working with basemaps it is possible to clip the basemap to reduce the time it takes ArcMap to draw, and also to eliminate data outside of the shapefile of interest.

Take the map of Texas congressional districts (below) for example. If all that is needed is the data within the state boundaries of Texas, use the clip function within the Data Frame Properties dialogue box :



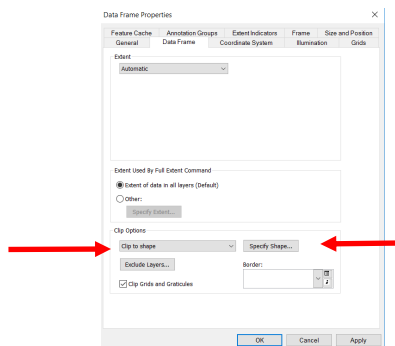
# GIS Quick Tips

Presented by CDC's Division of Heart Disease and Stroke Prevention GIS Exchange

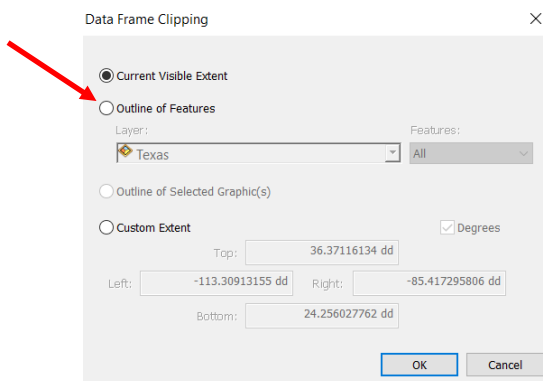
For more information visit the GIS Exchange website:

<https://www.cdc.gov/dhdsp/maps/gisx/index.html>

Open the Data Frame properties dialogue box and choose the Data Frame tab. Choose 'clip to shape' and 'specify shape'.



Choose to clip to 'current extent' if you simply want to speed up drawing. Choose 'outline of features' if you want to clip to the shape of another feature. Remember, all of these clips are easily reversed by going back to the Data Frame tab and choosing 'no clipping'.



=

