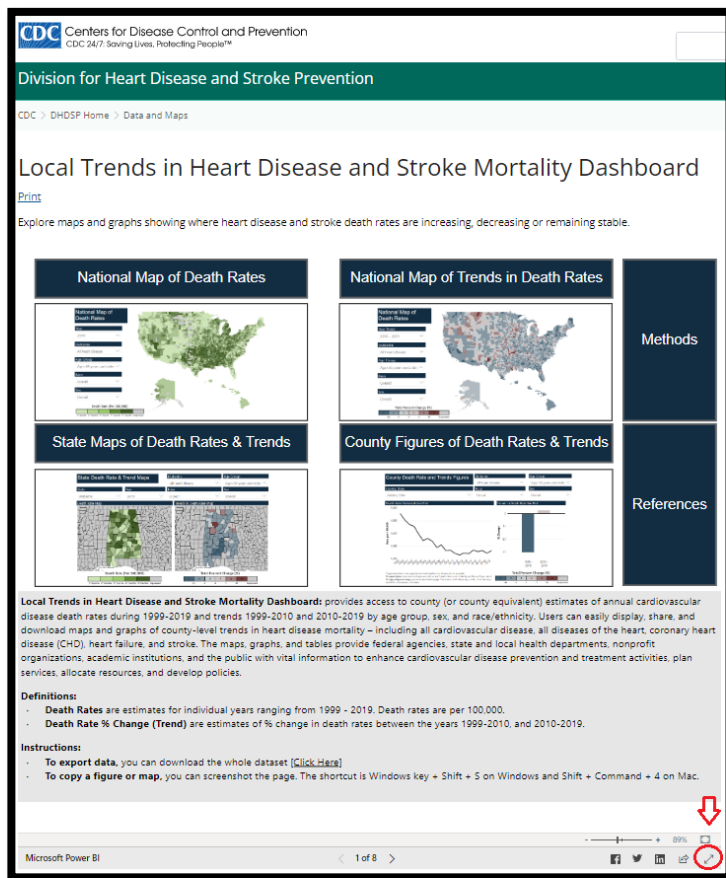


# How to View County-Specific Figures of Trends in Heart Disease and Stroke Death Rates

## Step 1: Open the Local Trends in Heart Disease and Stroke Mortality Dashboard

<https://www.cdc.gov/dhdsp/maps/hd-stroke-mortality-dashboard.htm>



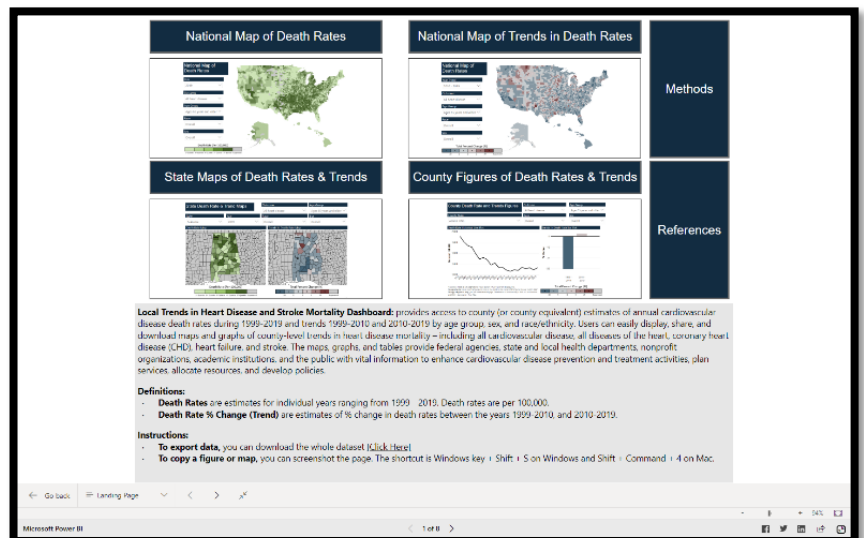
## Step 2:

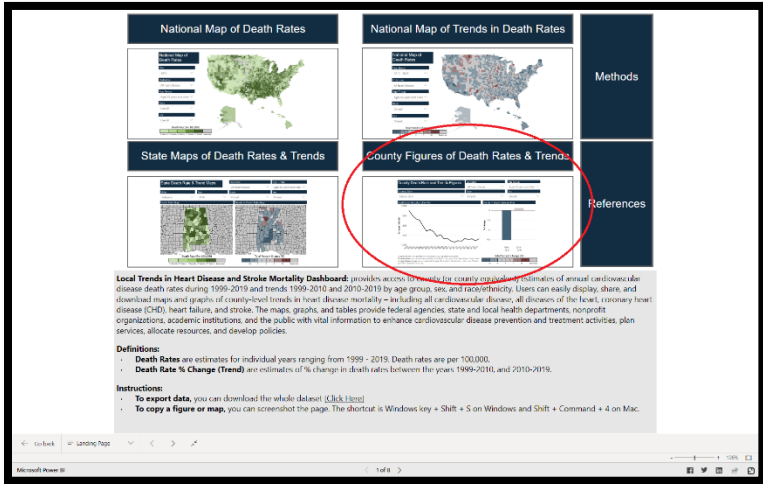
Click on the expand tool on the bottom right corner of the screen to open the dashboard in full-screen mode.

Note: This step is optional; it will make it easier to navigate within the Dashboard.



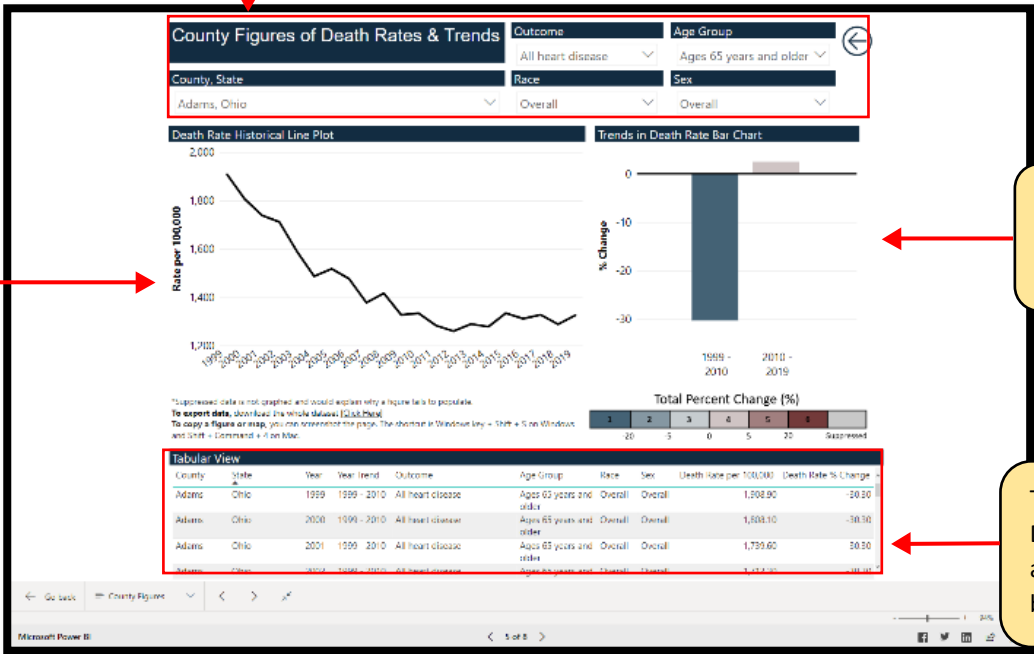
Full Screen Mode





**Step 3:** Click on the County Figures of Death Rates and Trends located on the bottom right quadrant.

Panel for selecting the county, state, outcome, racial/ethnic group, age group, and gender



Line Plot of Historical Death Rates

Bar Chart of Trends in Death Rates

Table of Death Rates and Trends by County



