



Dengue Surveillance Weekly Report

CDC Dengue Branch & Puerto Rico Department of Health



Data through December 9, 2015

November 12 18, 2015 (Week 46)

Summary¹

Week 46

30 suspected cases reported

This level of reporting is BELOW the historical average.²

Week 45

23 suspected cases reported

2 (8.7%) confirmed in the laboratory³

2 (3%) municipios** had confirmed cases

Serotypes

In the last 8 weeks:

- 80% DENV-2
- 20% DENV-4
- 0% DENV-3
- 0% DENV-1

Accumulated in 2015

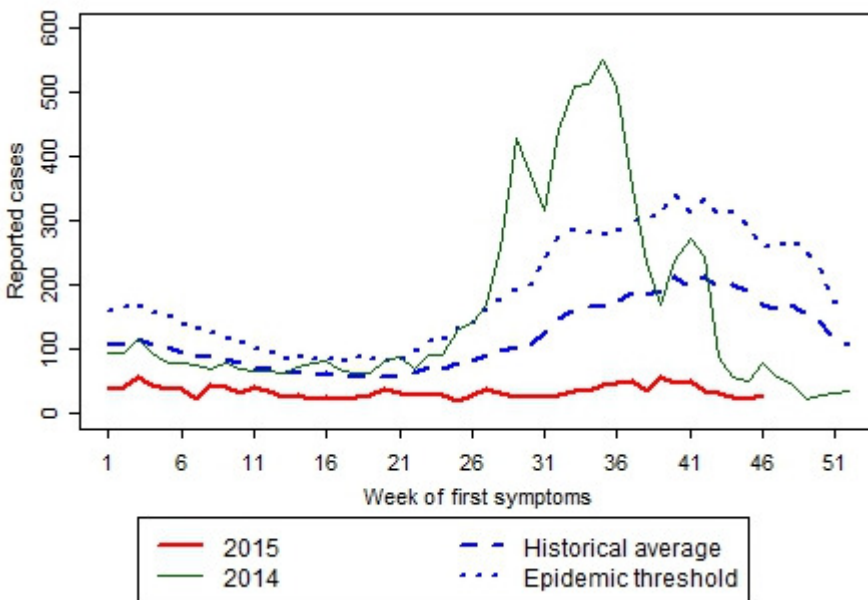
1696 suspected cases reported

43 (3%) confirmed in the laboratory³

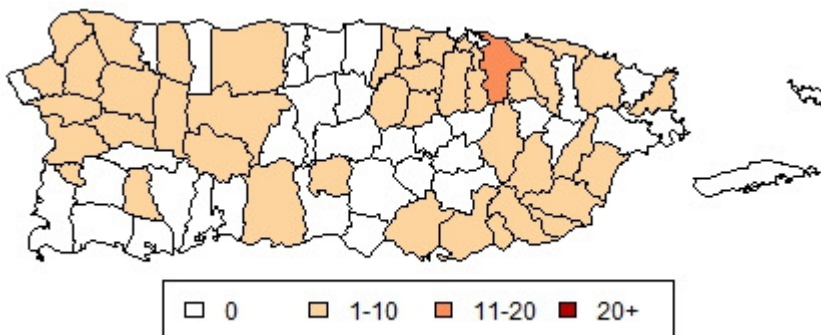
0 confirmed cases of dengue hemorrhagic fever (DHF)

0 confirmed fatal cases pending review

Suspected cases reported for 2015 compared to the historical average²



Municipios with suspected cases in weeks 43-46**



¹The numbers reported in the Summary reflect all data from regular and enhanced surveillance.

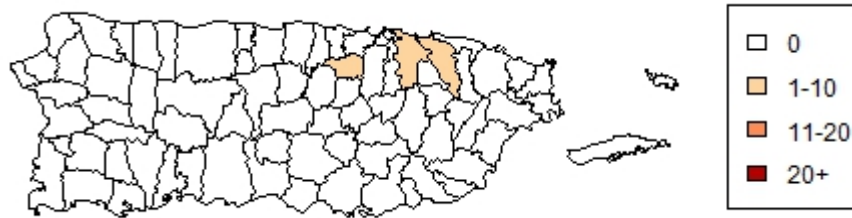
²The historical average represents the years 1986 - 2014. The threshold level is the 75th percentile of the distribution of cases in the same years. Data from the areas involved in an enhanced surveillance project are not included*. For this reason, the total number of reported cases in the figure may differ from the number reported in the Summary.

³In this report laboratory confirmation refers to a positive IgM or PCR test.

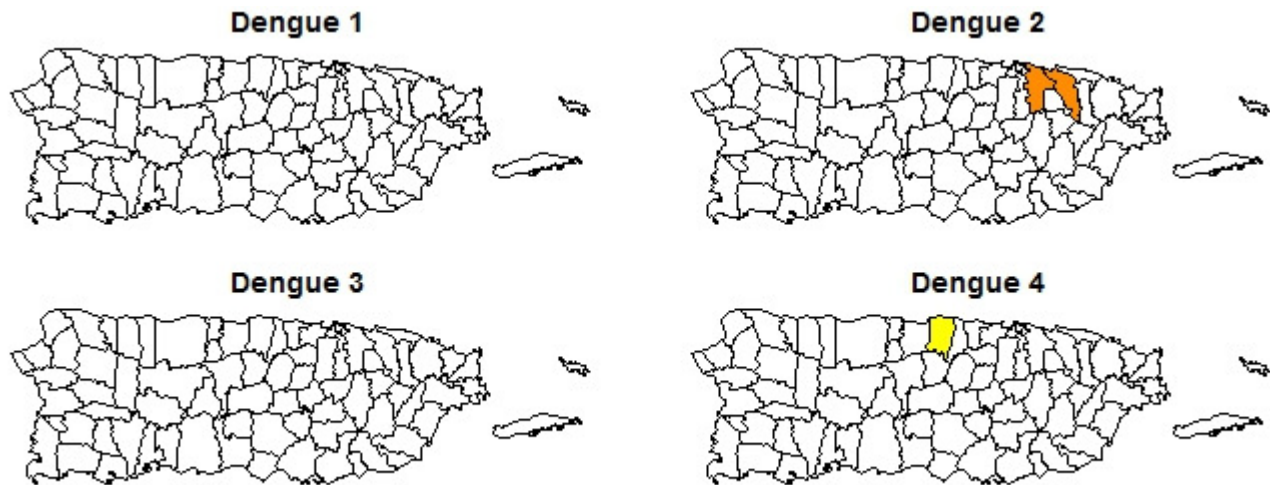
*Reported cases from the municipios of Arroyo, Guayama, Maunabo, Patillas, and Salinas may be higher due to their involvement in an enhanced surveillance project.

** Municipios are administrative units roughly equivalent to counties.

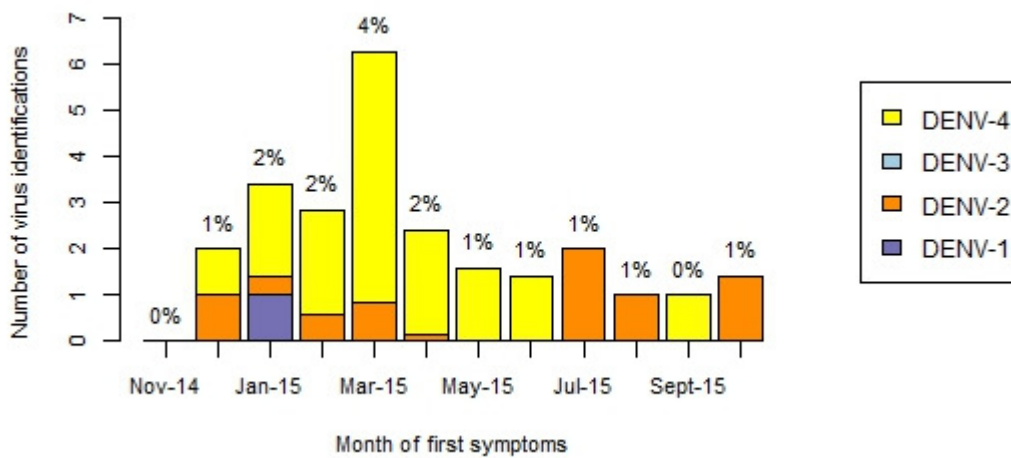
Municipios with laboratory confirmed cases in the weeks 42-45³



Confirmations of virus serotype in the last eight weeks by municipio



Total viral identifications in the last 12 months⁴



⁴The percentage is the proportion of reported cases with confirmation of serotype.