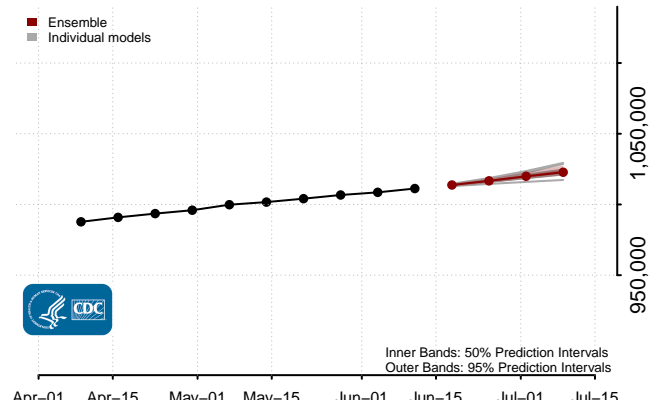
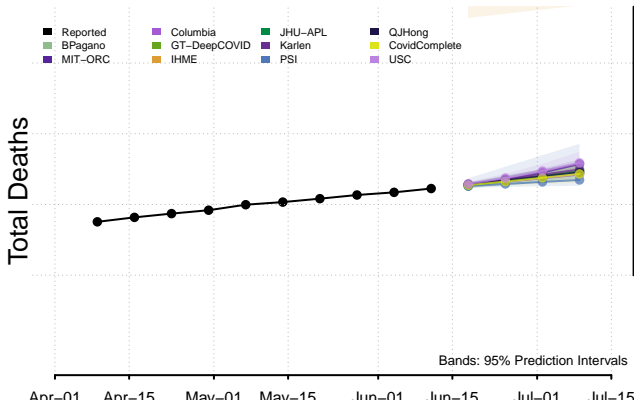
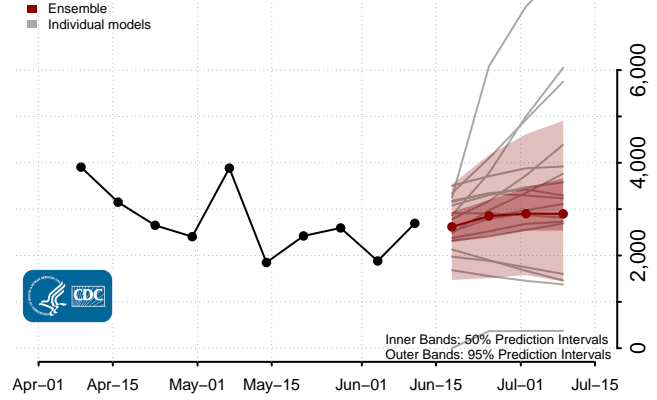
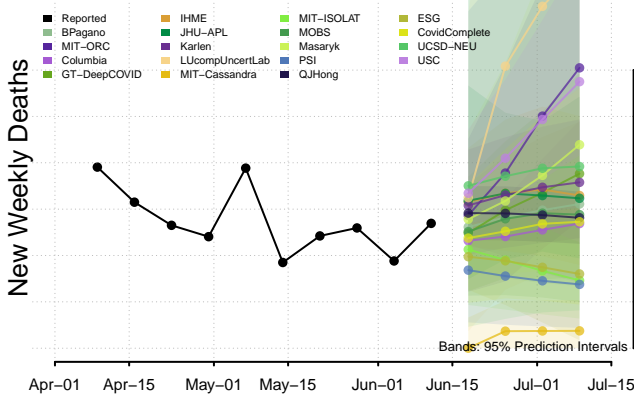
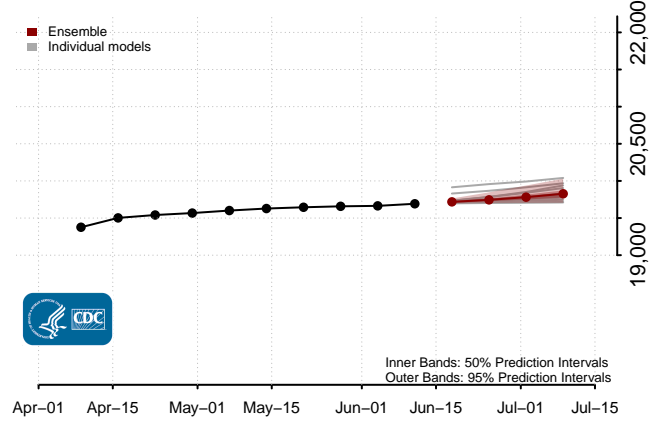
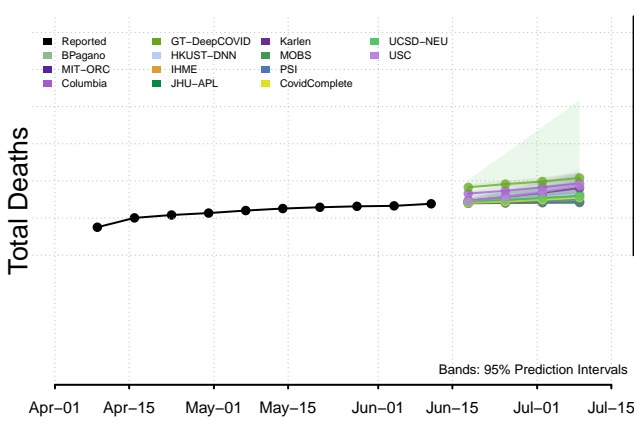
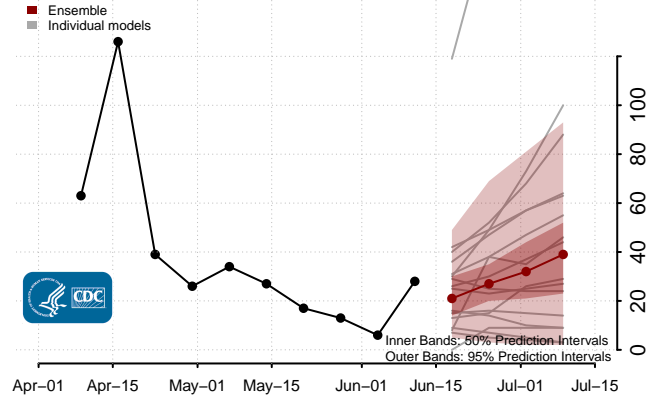
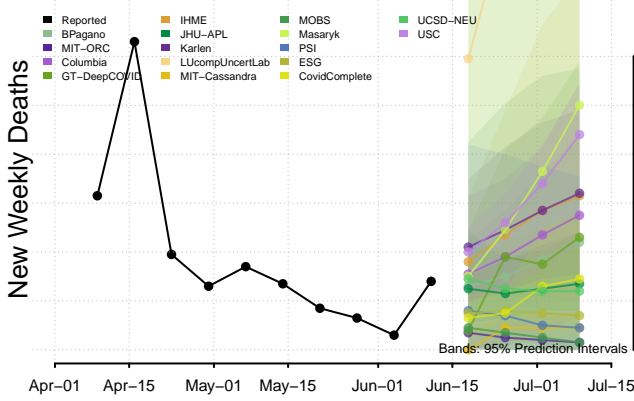


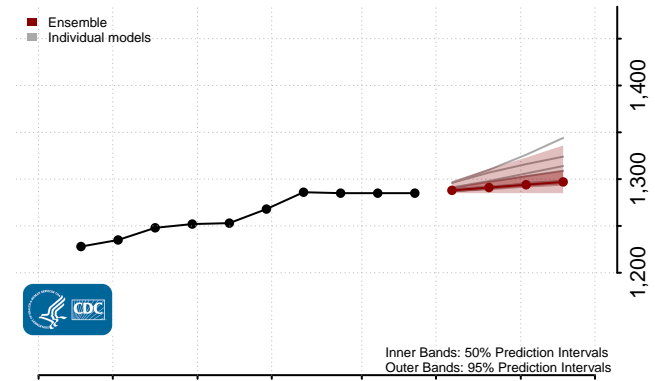
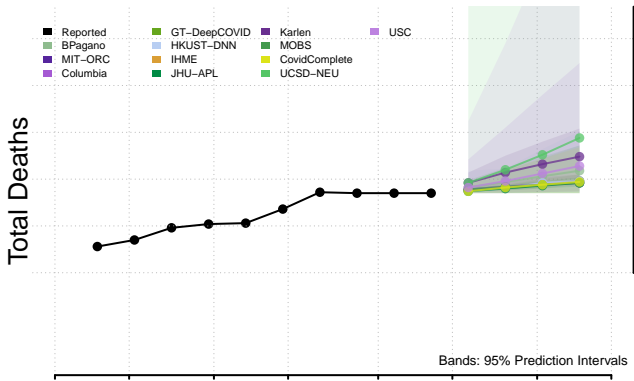
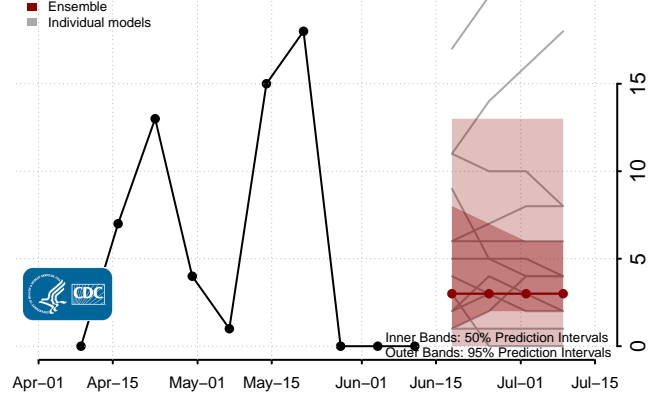
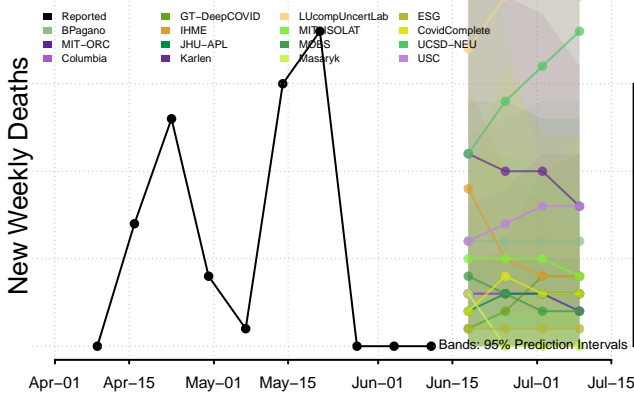
### National



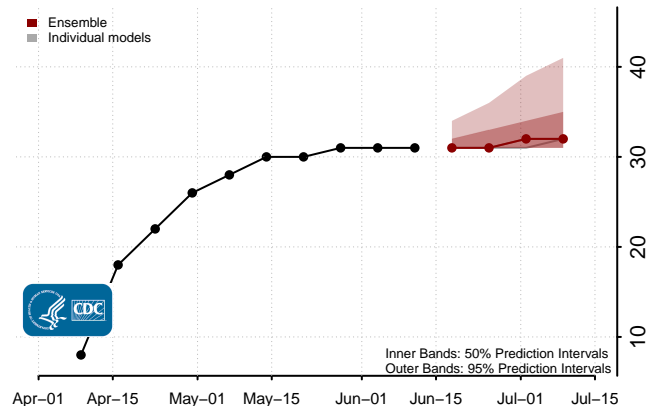
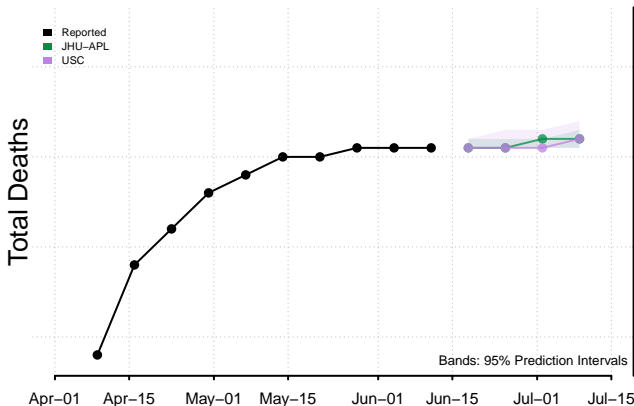
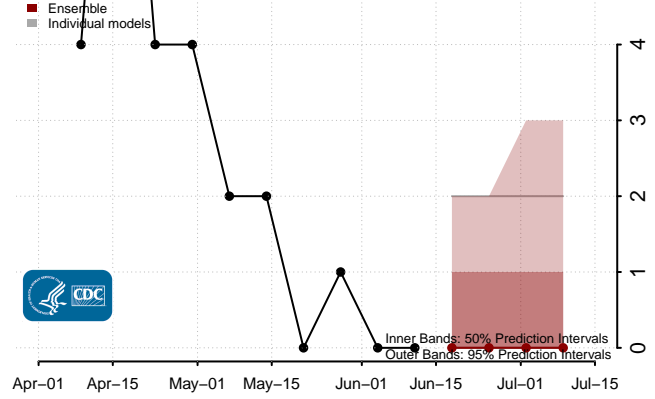
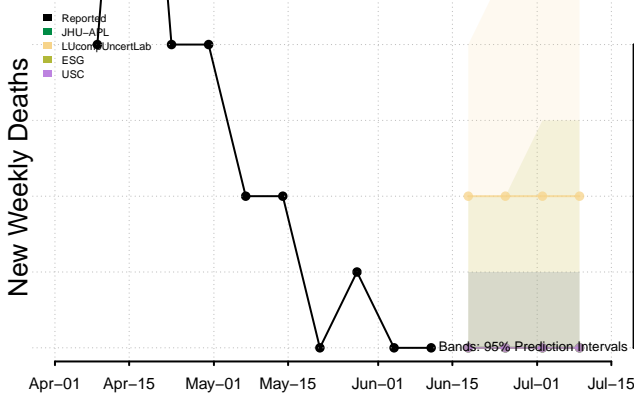
### Alabama

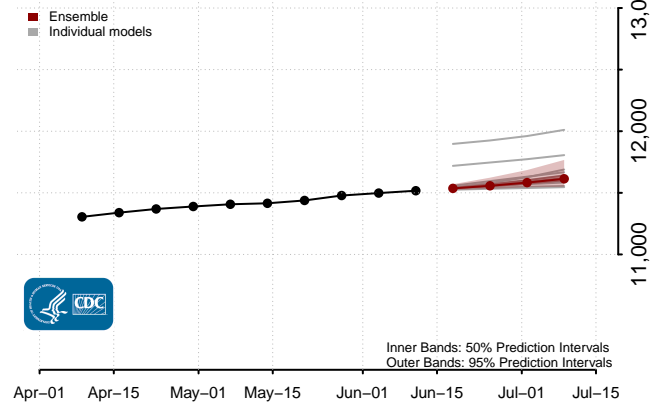
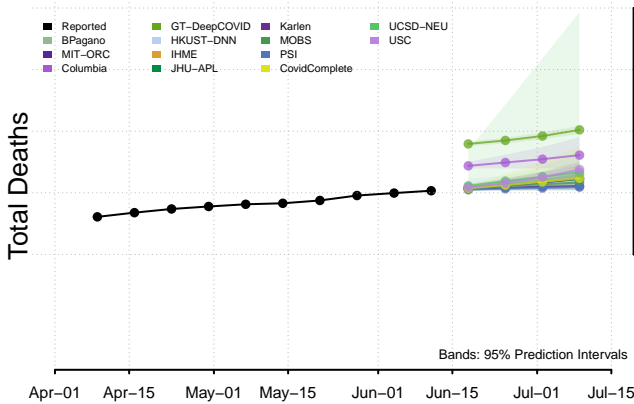
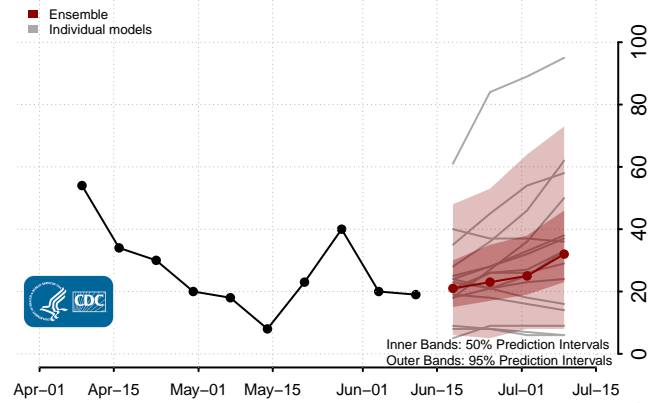
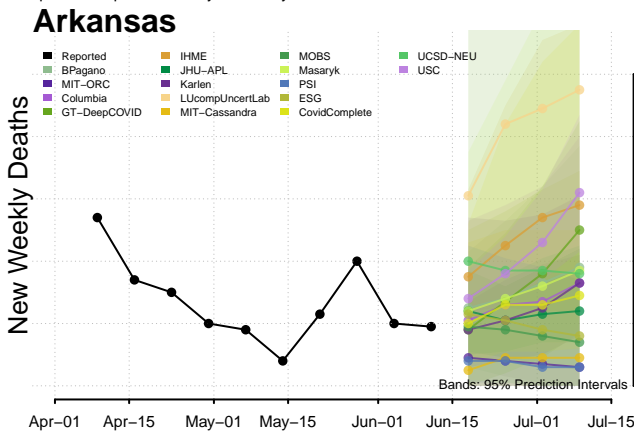
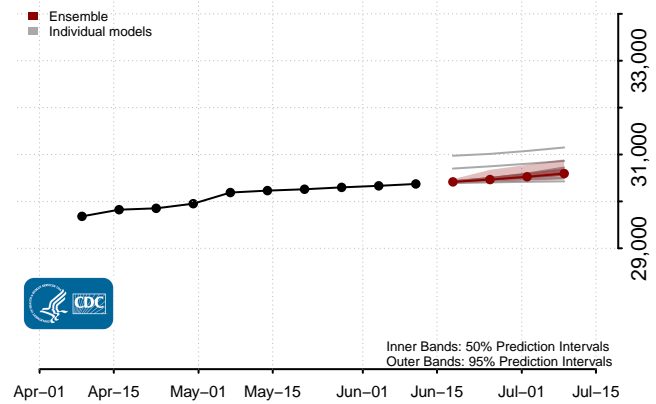
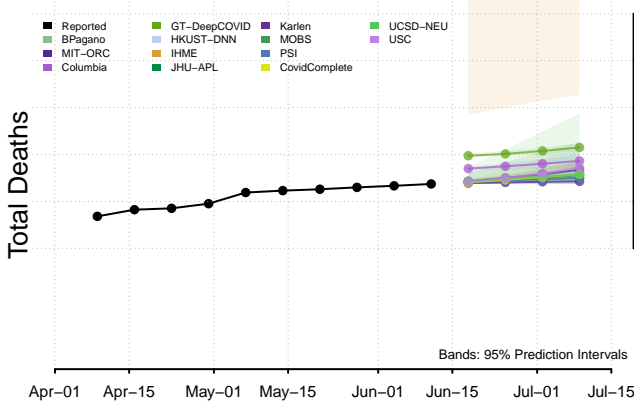
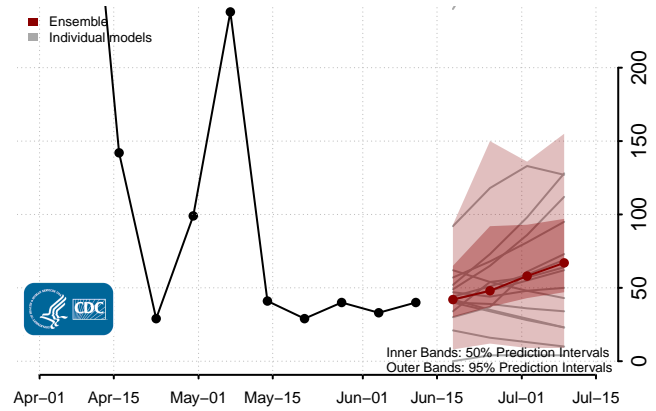
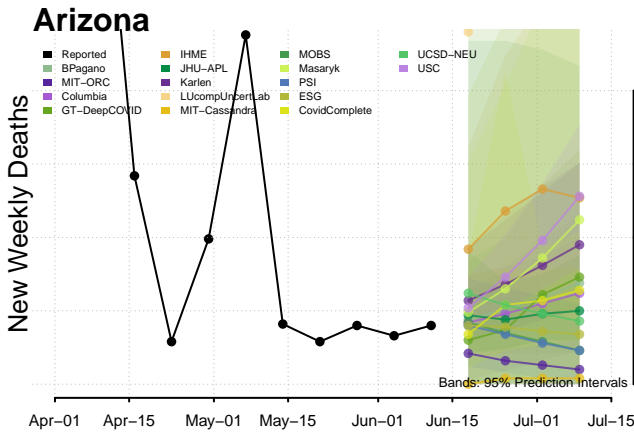


### Alaska

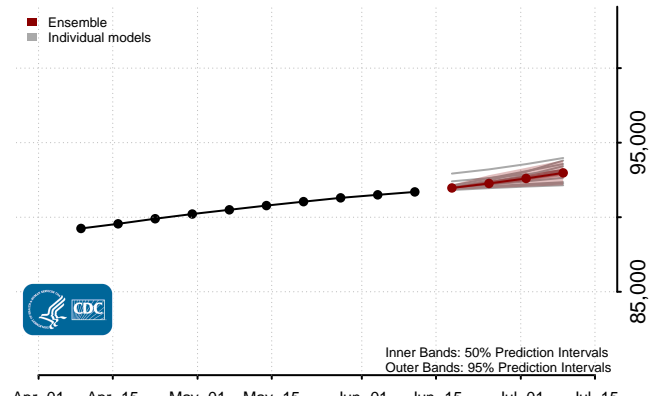
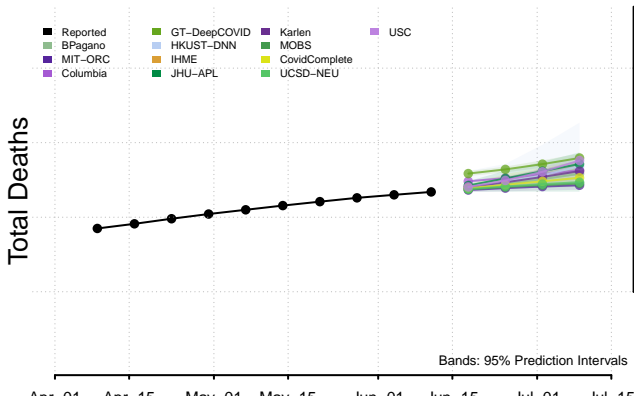
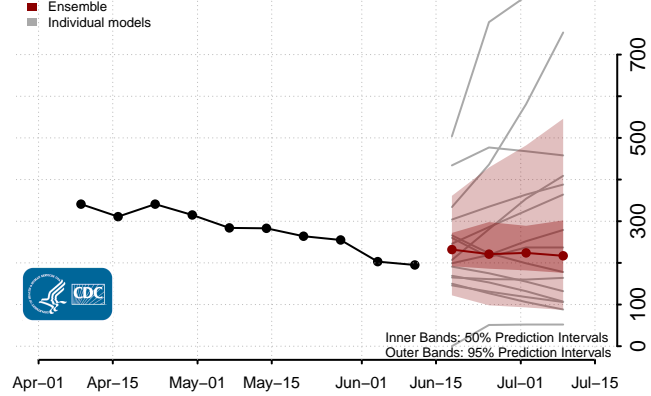
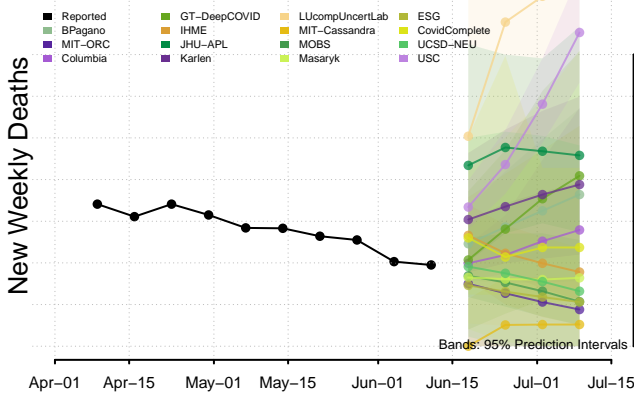


### American Samoa

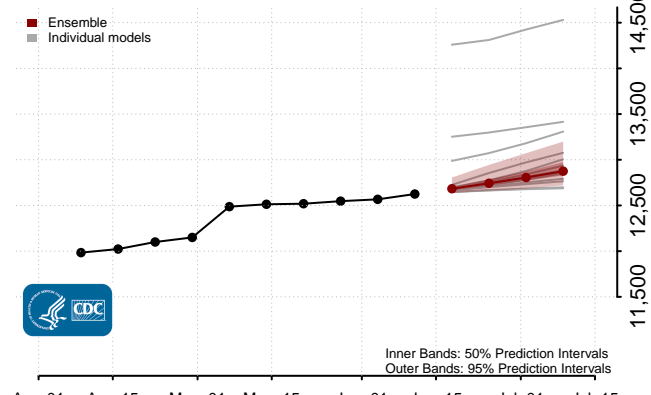
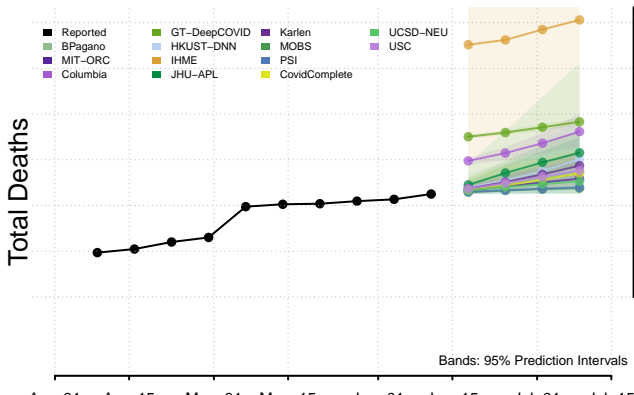
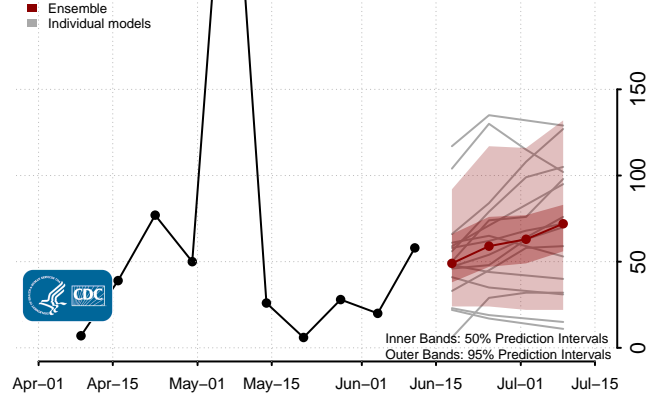
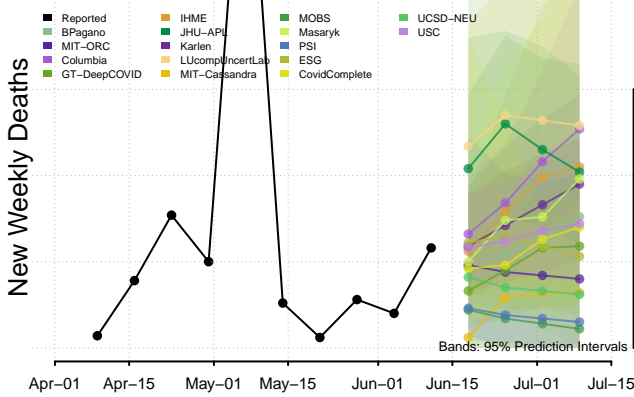




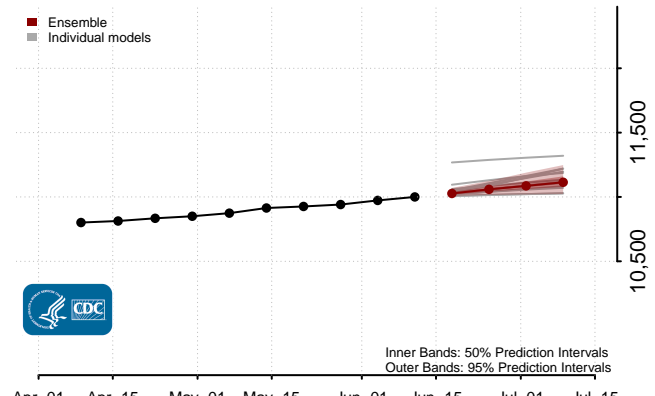
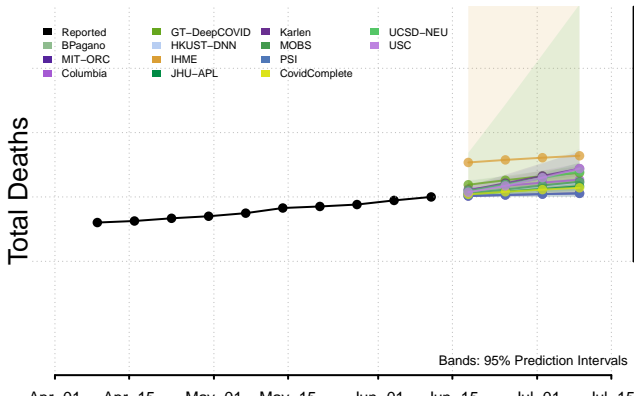
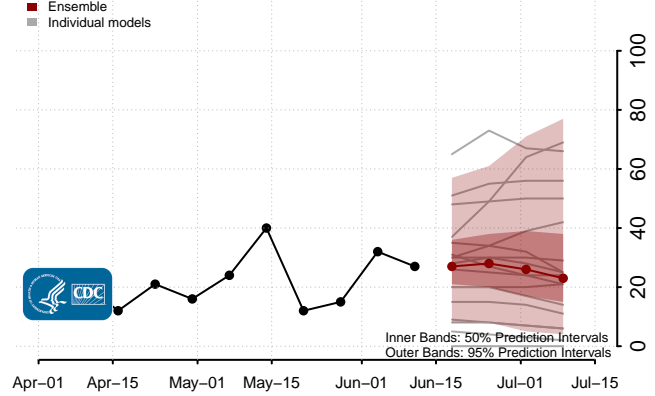
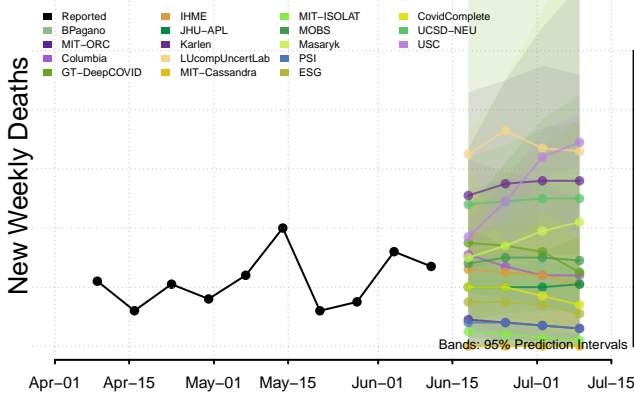
### California



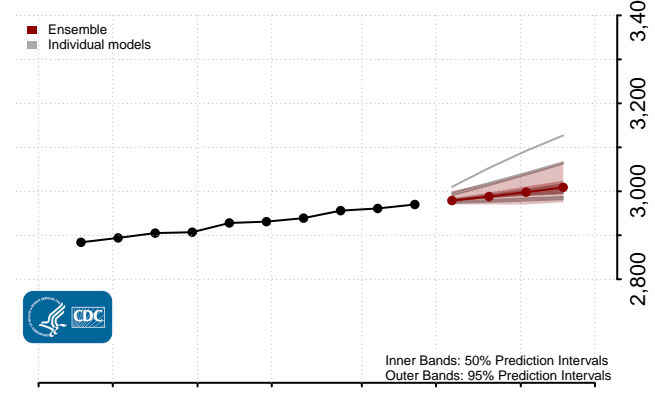
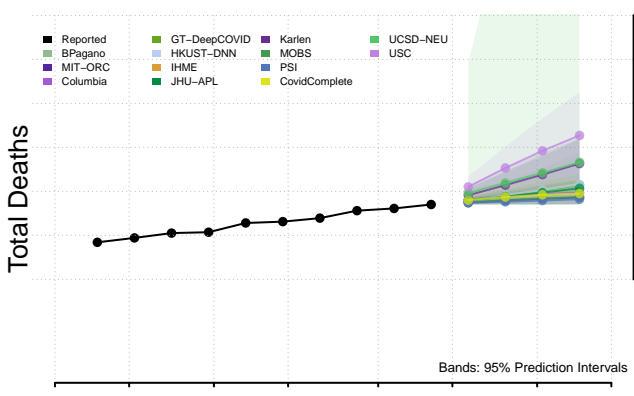
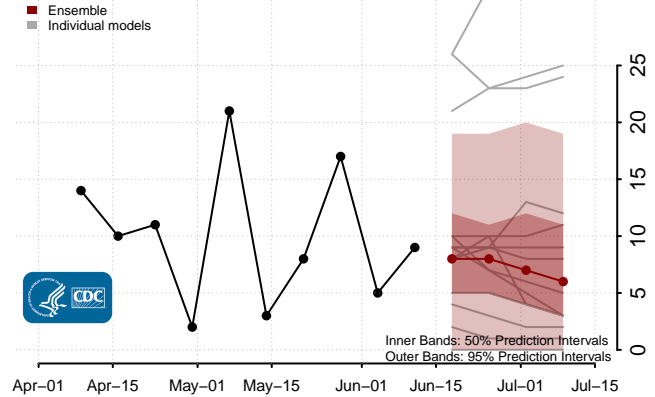
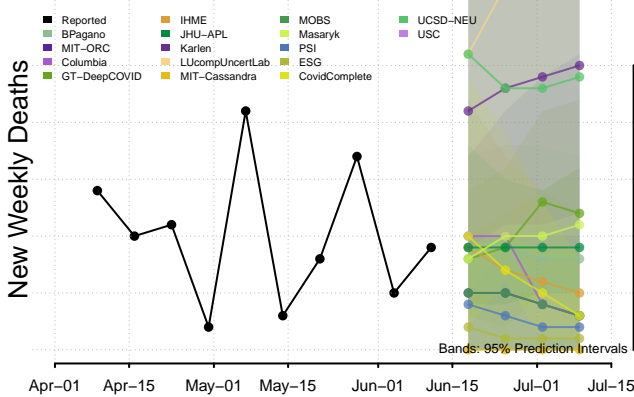
### Colorado



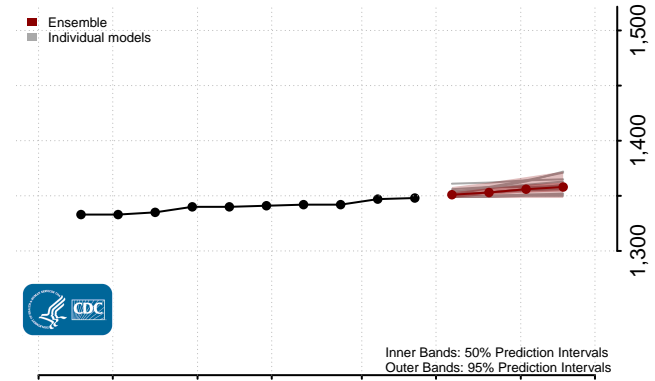
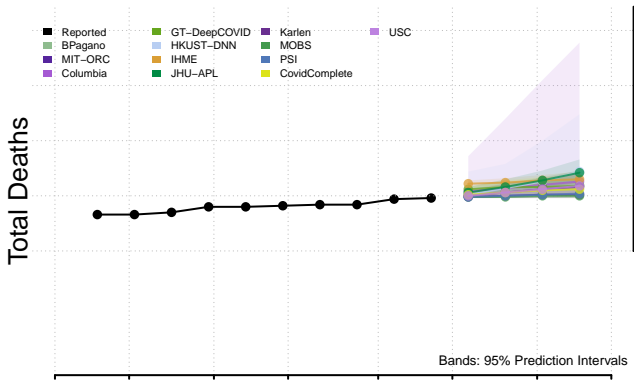
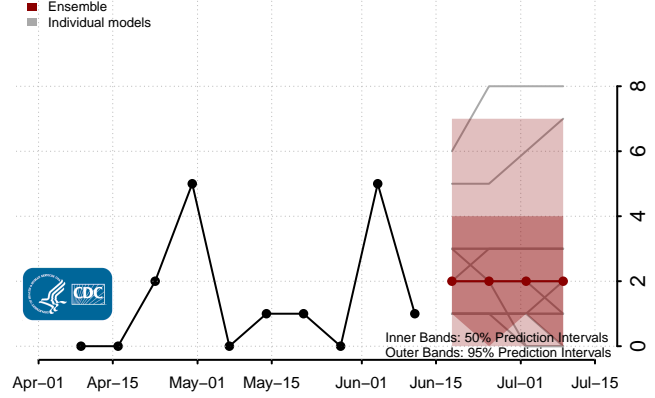
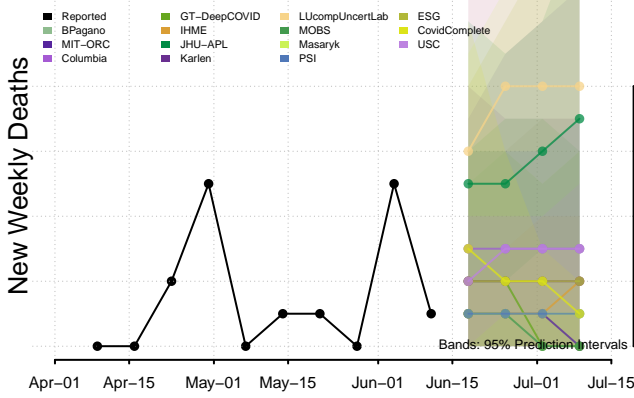
### Connecticut



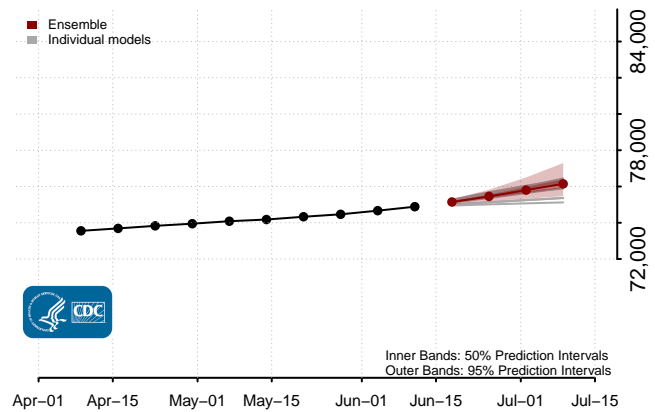
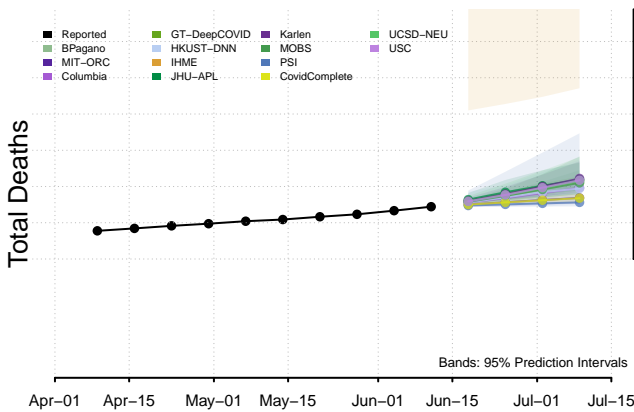
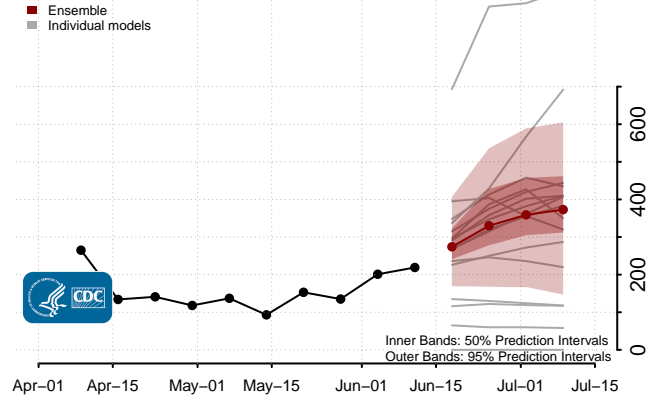
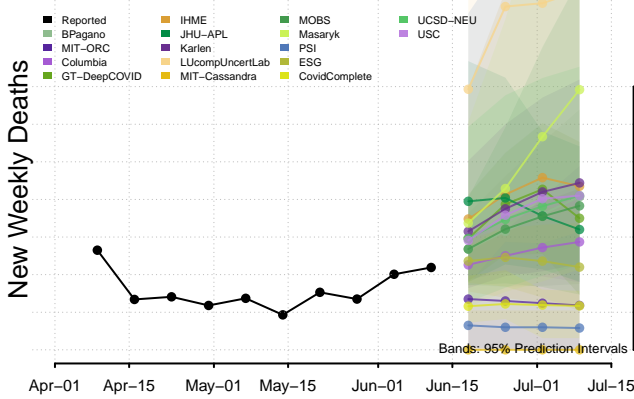
### Delaware



### District of Columbia

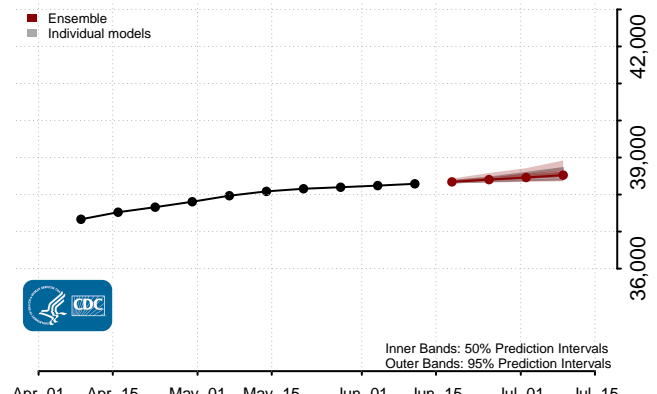
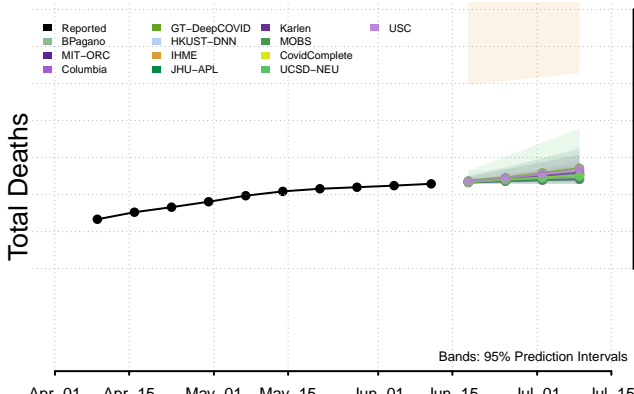
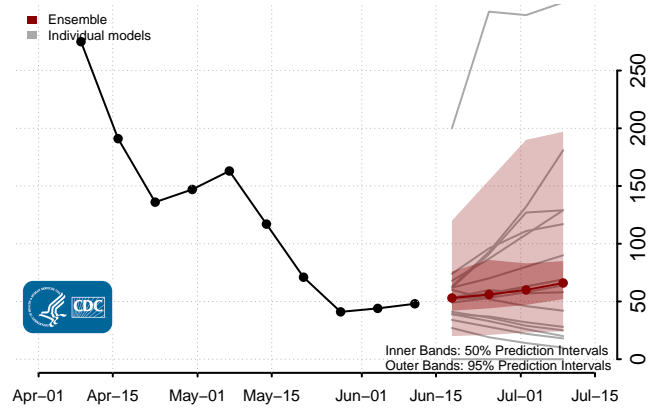
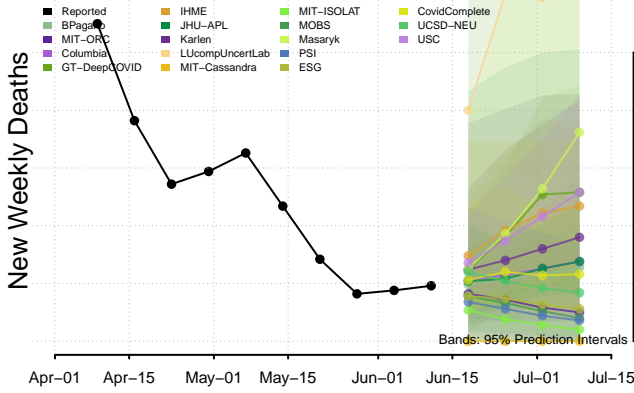


### Florida\*\*

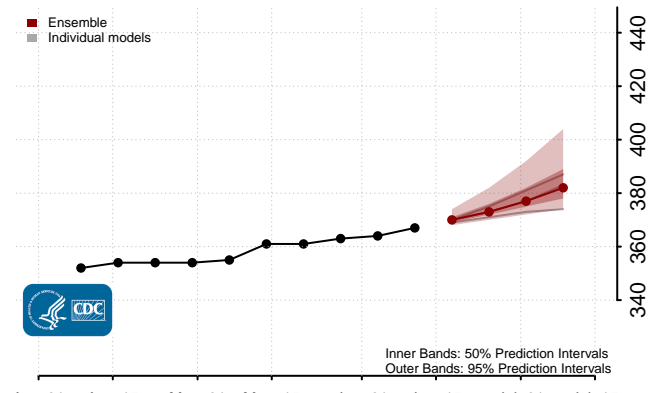
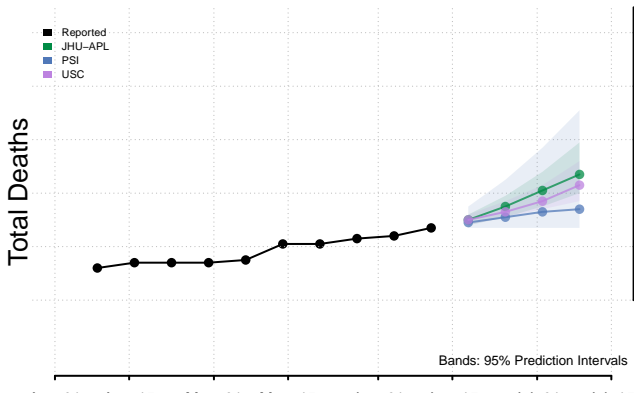
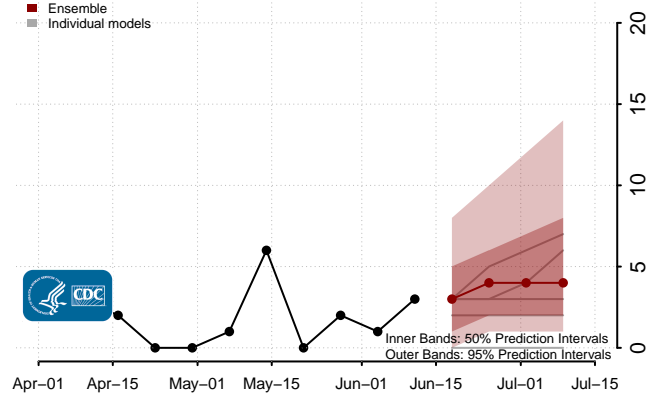
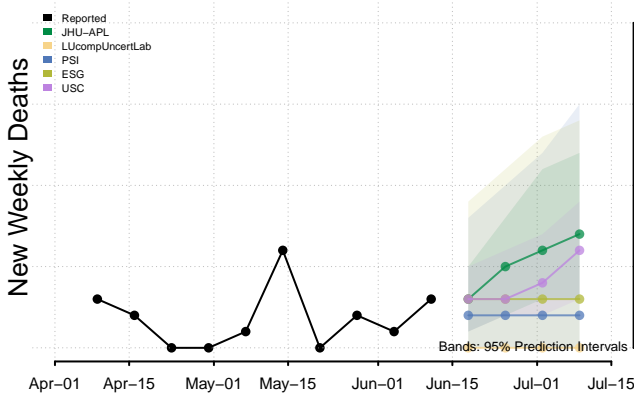


\*\*New weekly deaths may increase in this location over the next four weeks. For these locations, the ensemble forecast indicates a probability of 0.75 or greater that more deaths will be reported in week four of the forecast than in the last reported week.

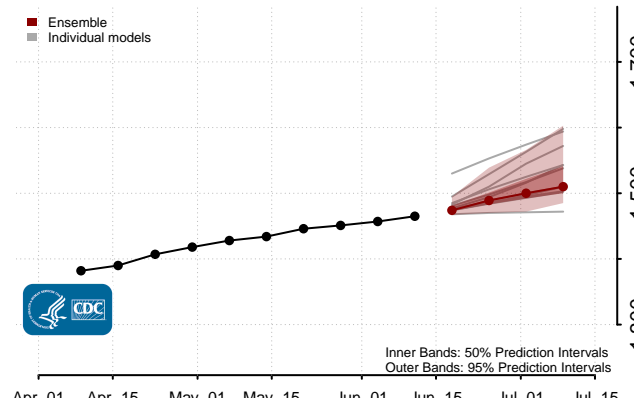
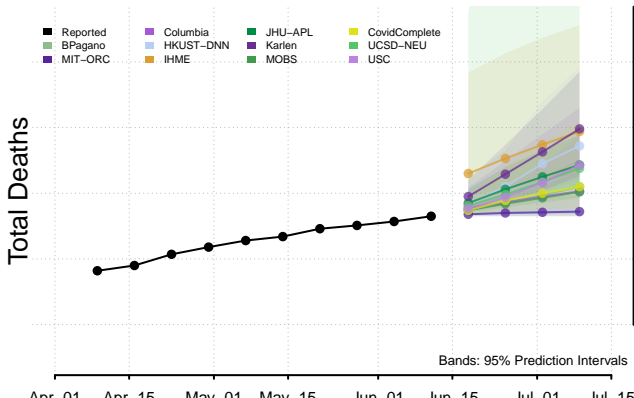
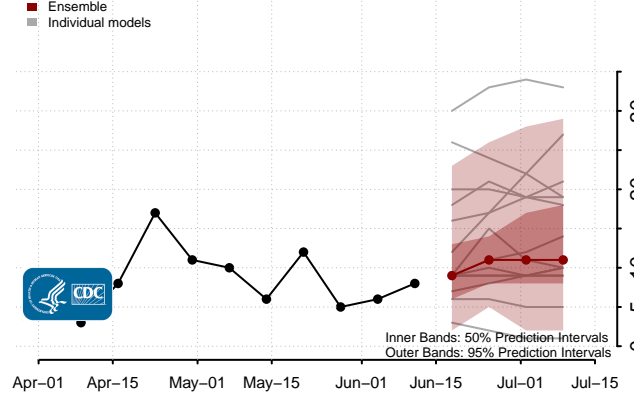
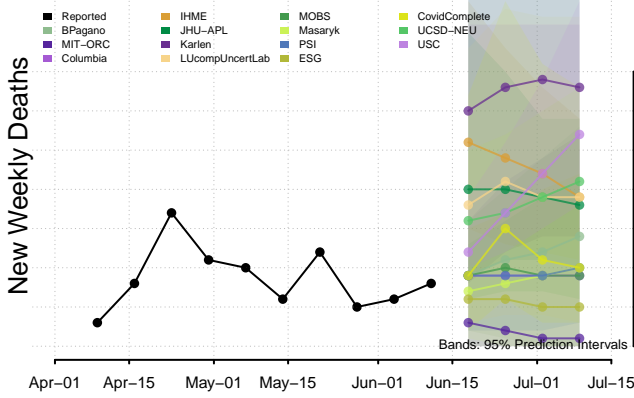
### Georgia



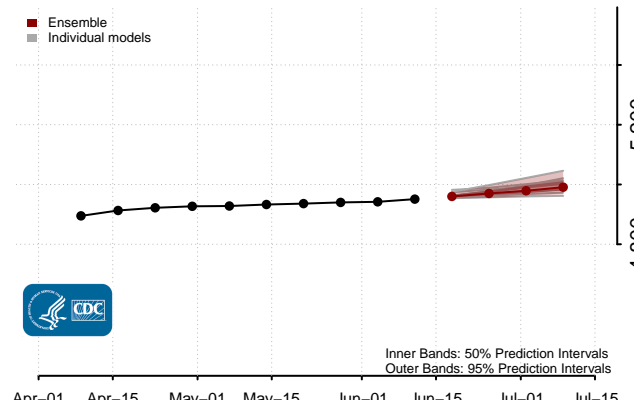
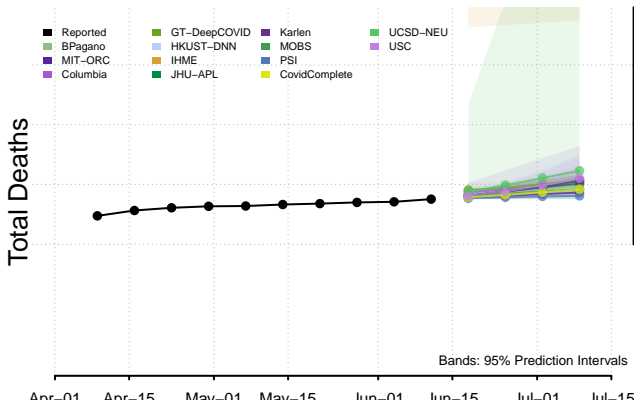
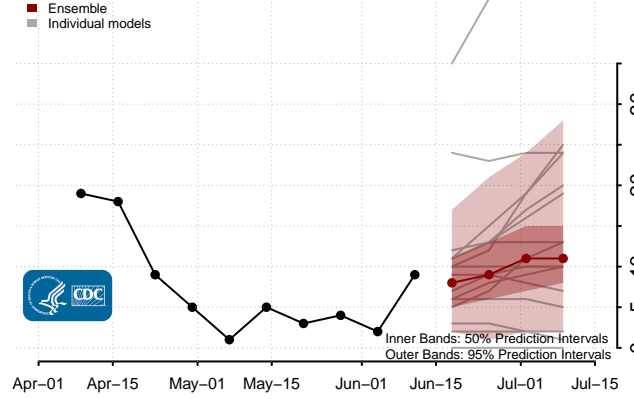
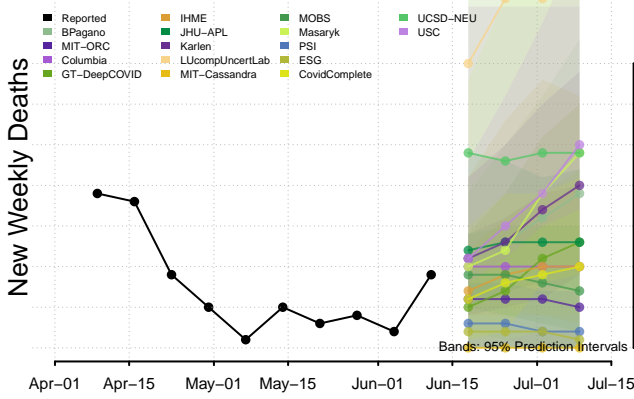
### Guam



### Hawaii

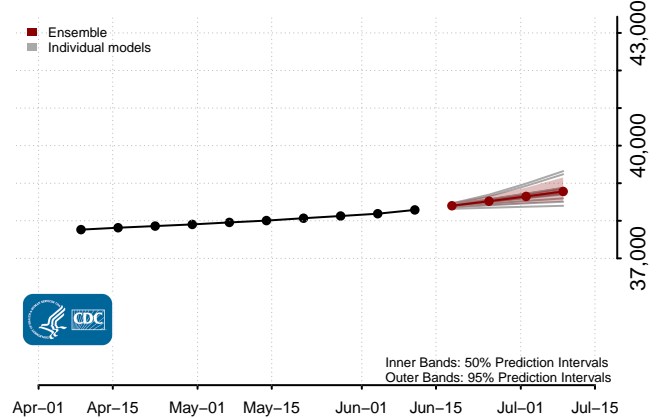
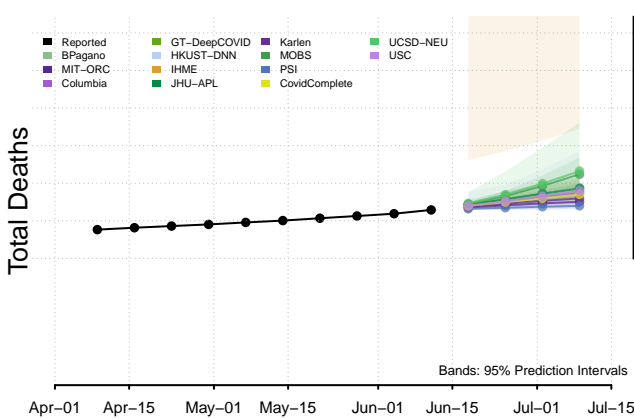
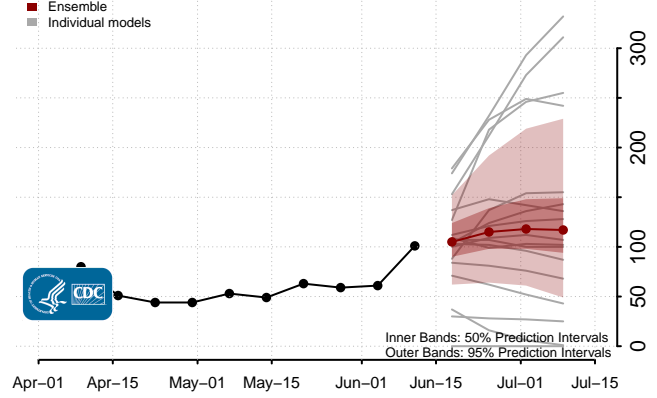
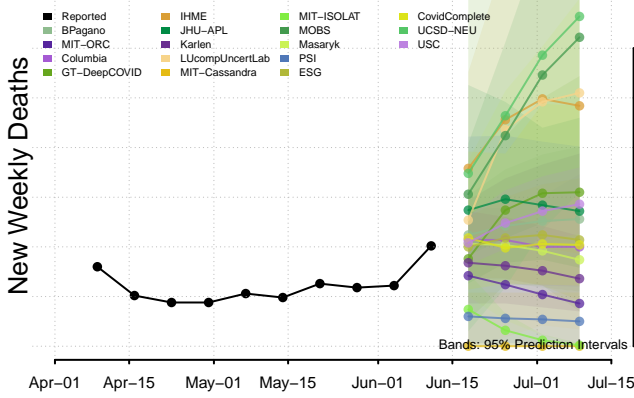


### Idaho

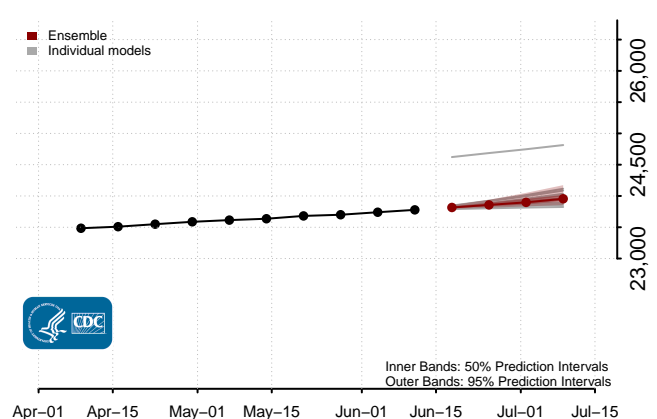
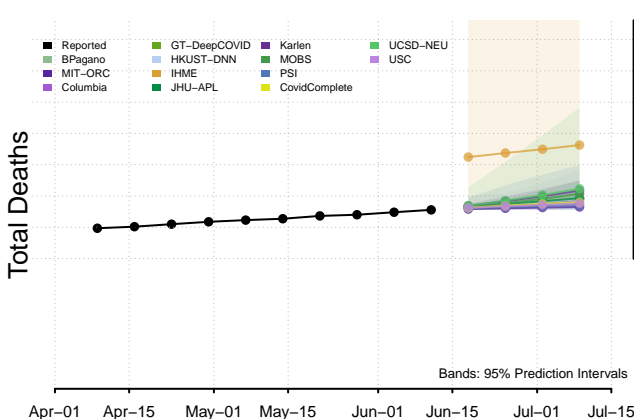
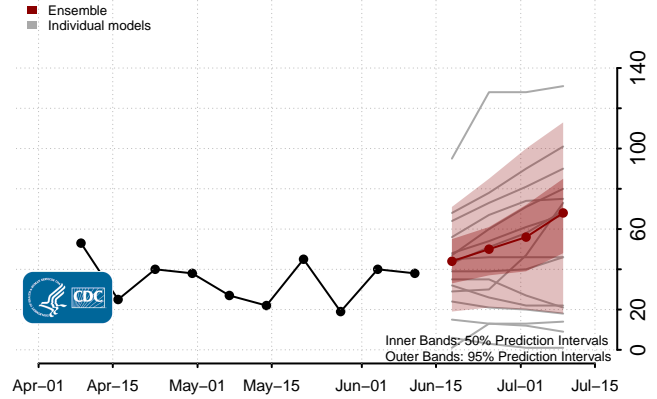
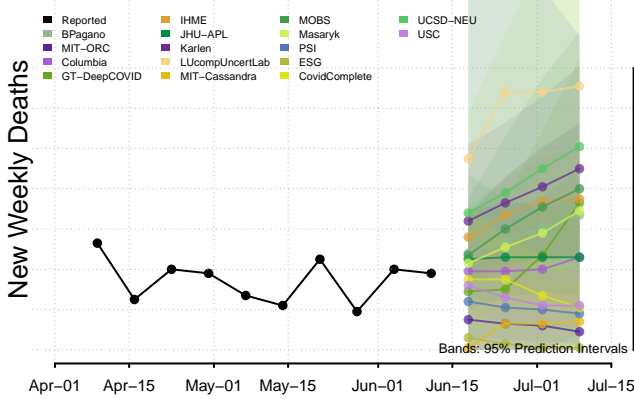




### Illinois

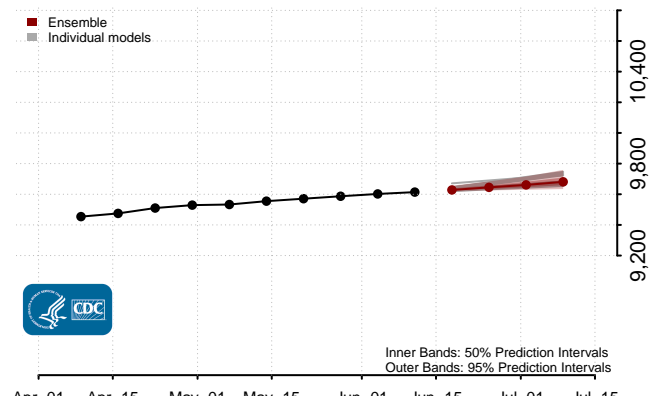
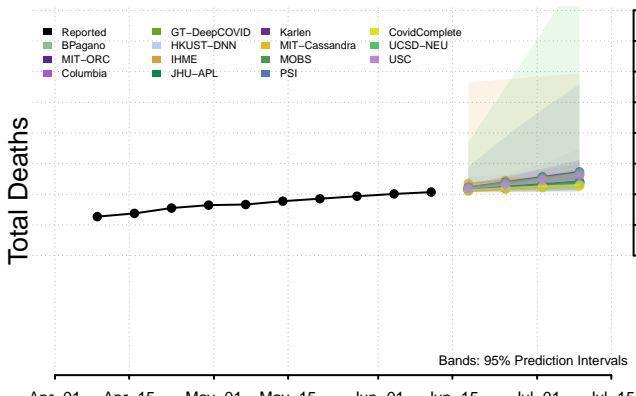
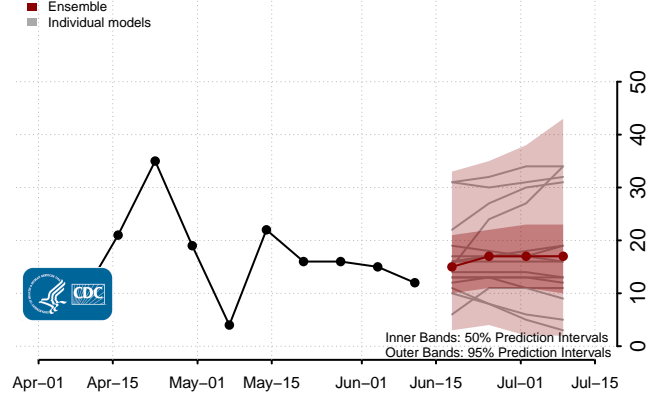
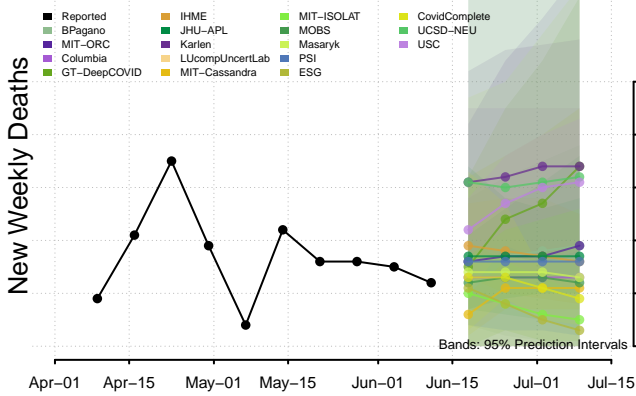


### Indiana\*\*

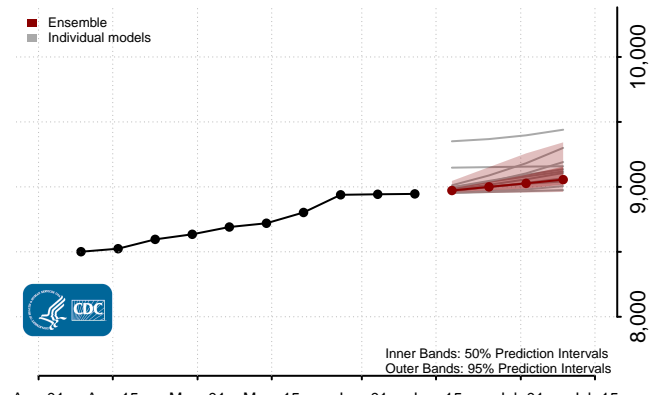
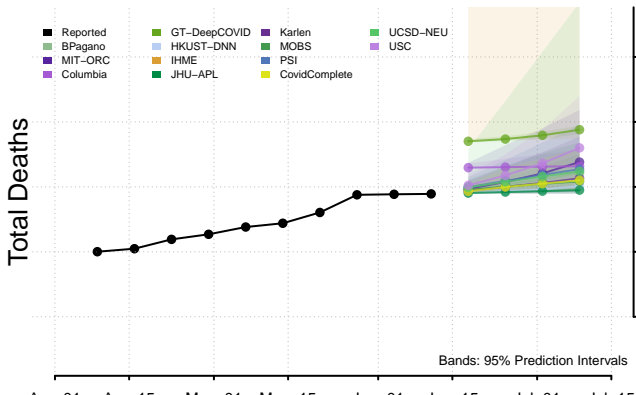
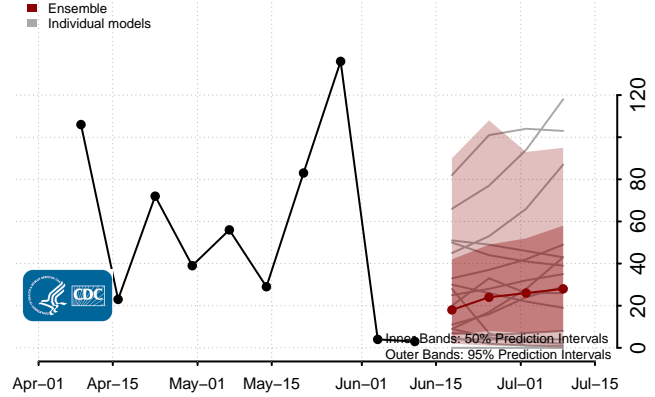
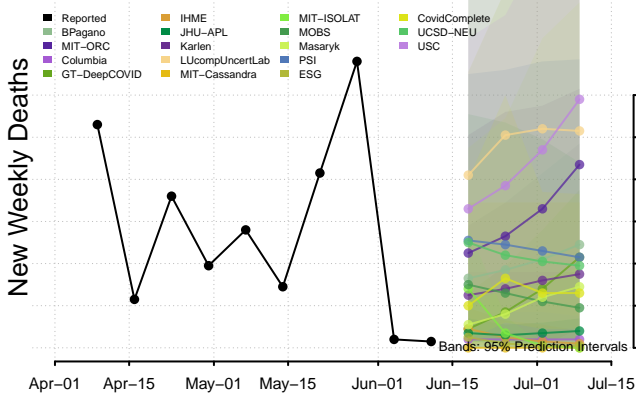


\*\*New weekly deaths may increase in this location over the next four weeks. For these locations, the ensemble forecast indicates a probability of 0.75 or greater that more deaths will be reported in week four of the forecast than in the last reported week.

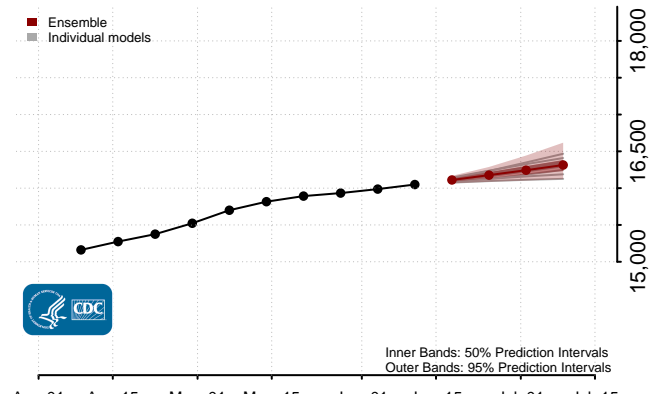
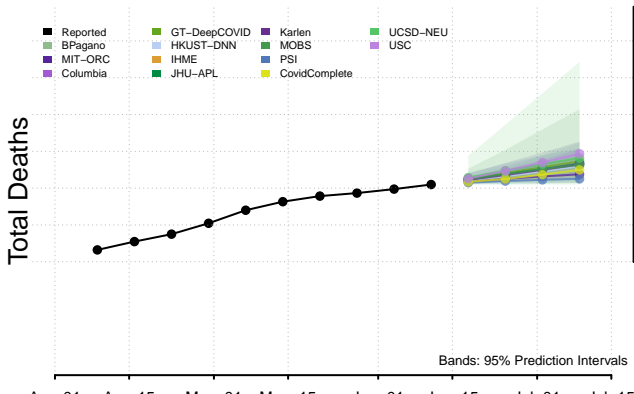
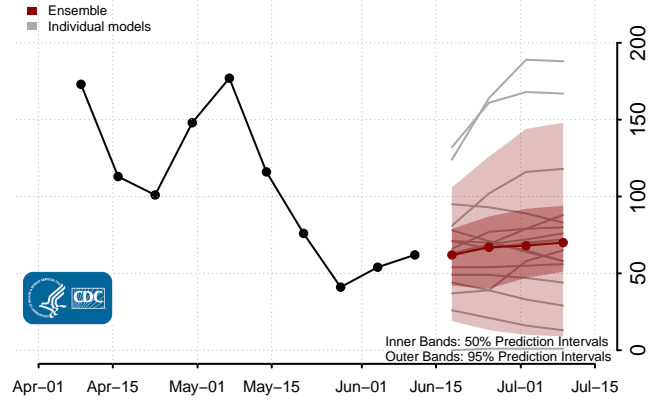
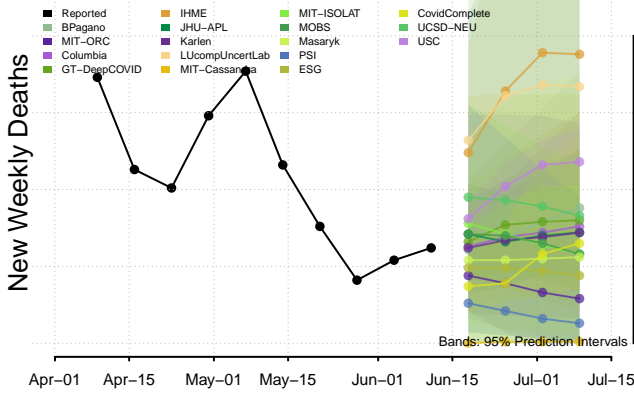
### Iowa



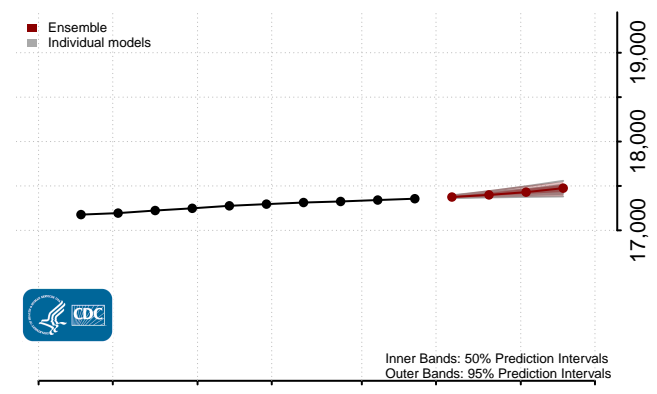
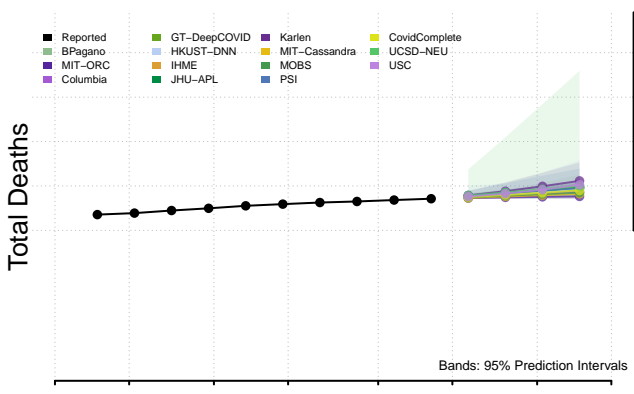
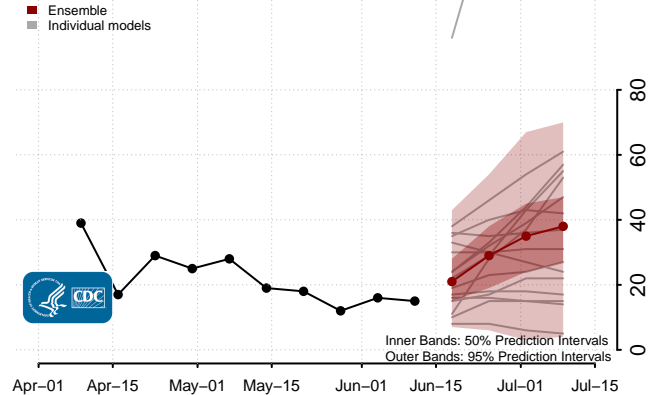
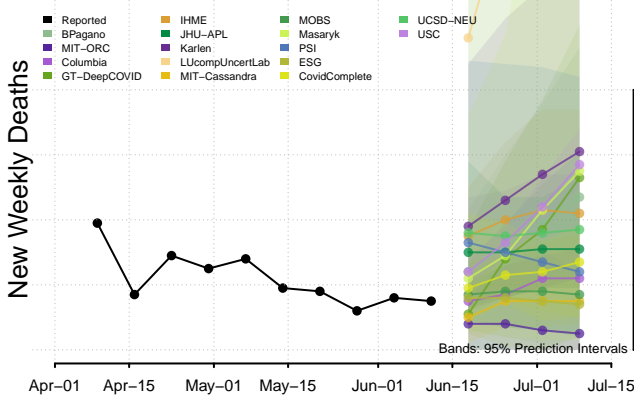
### Kansas



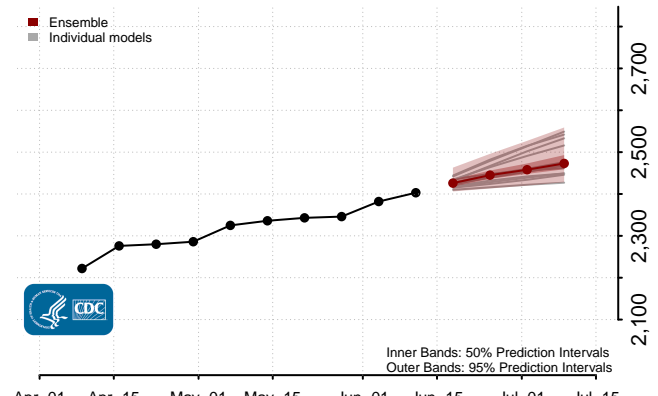
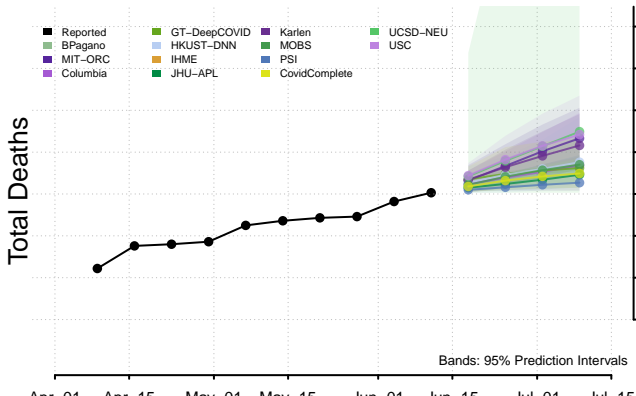
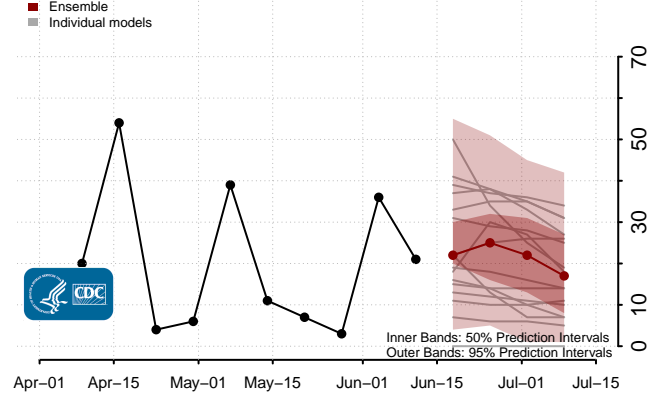
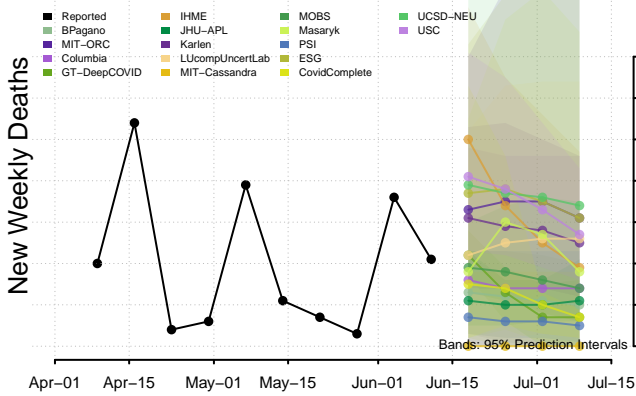
### Kentucky



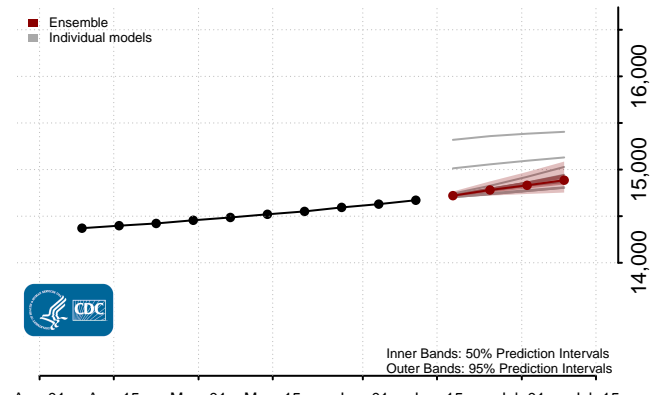
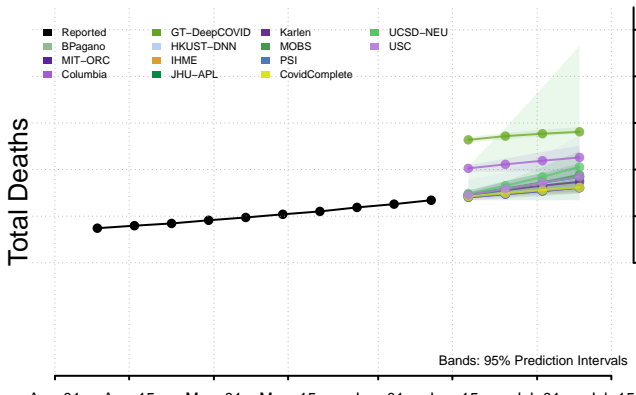
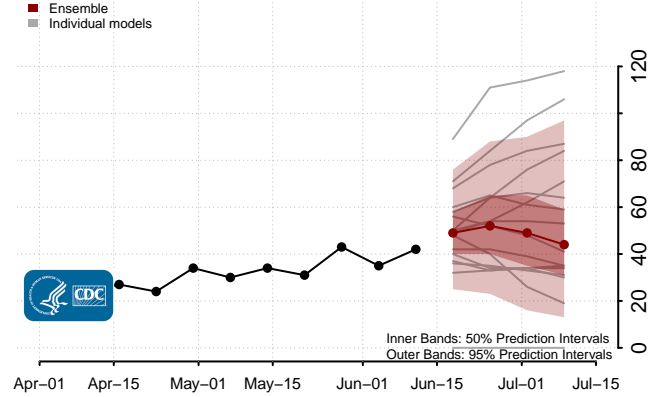
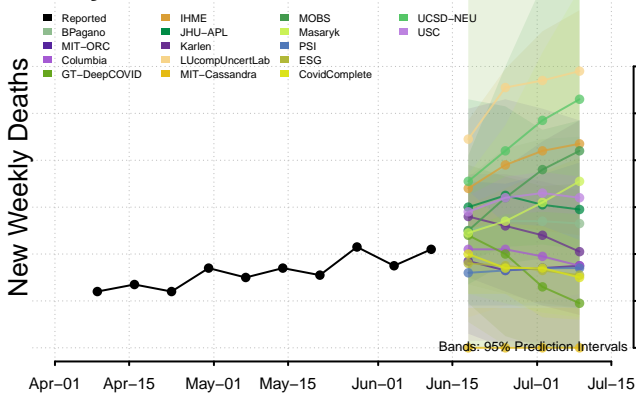
### Louisiana



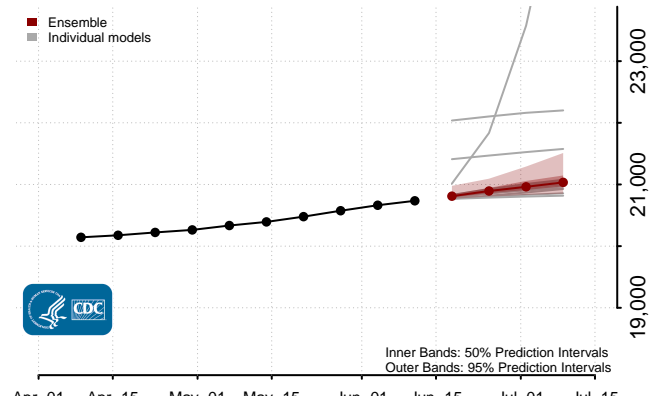
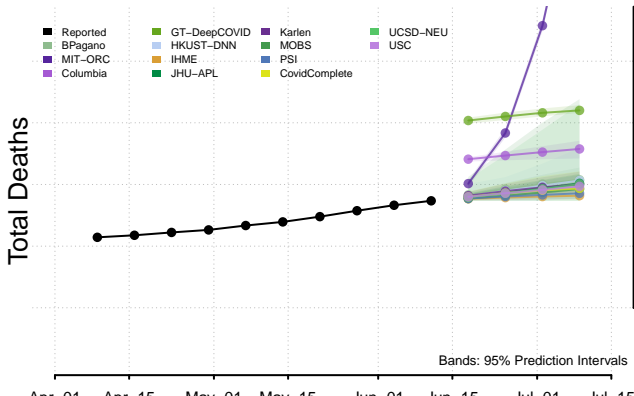
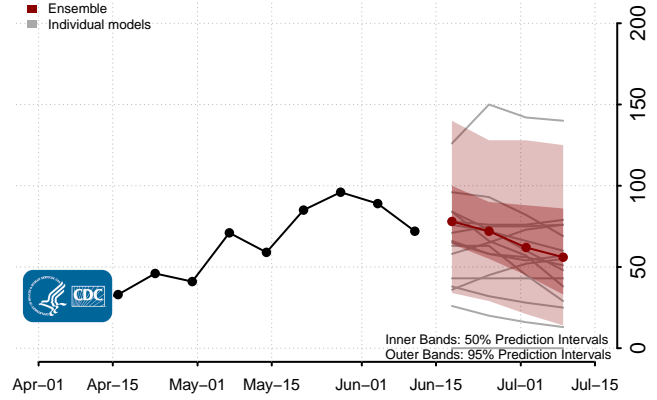
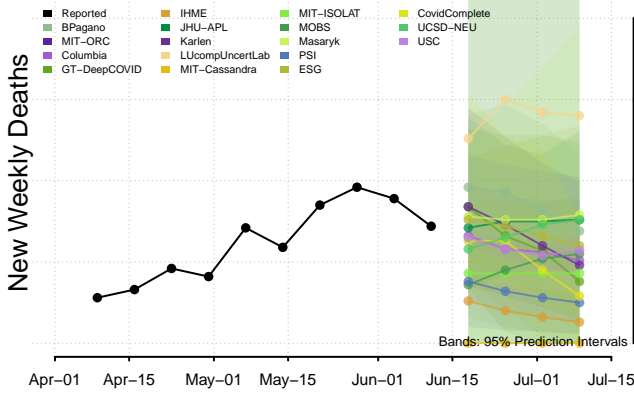
### Maine



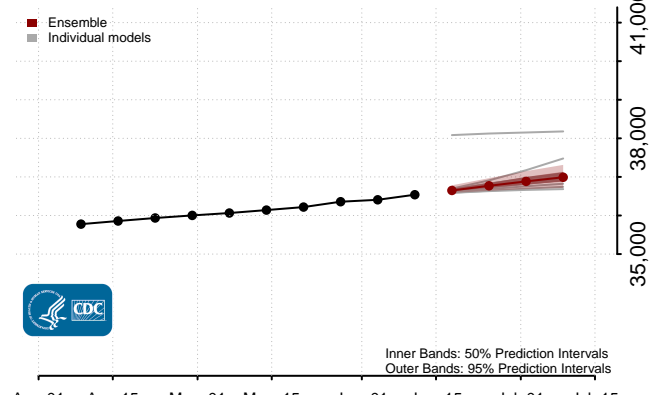
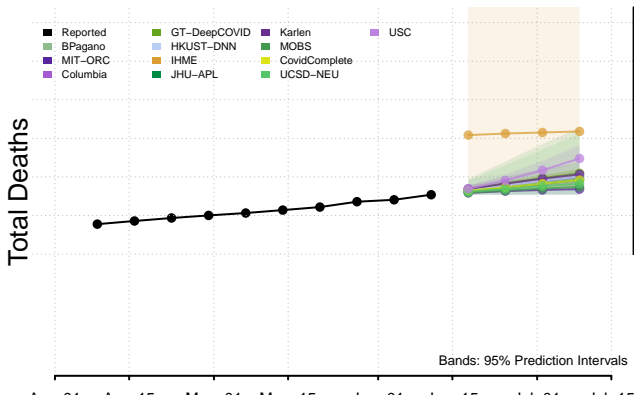
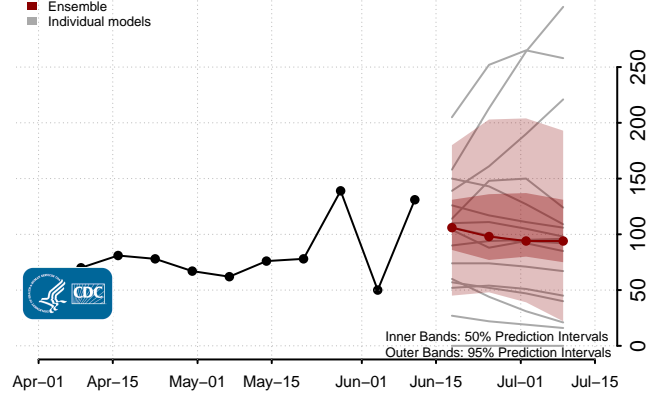
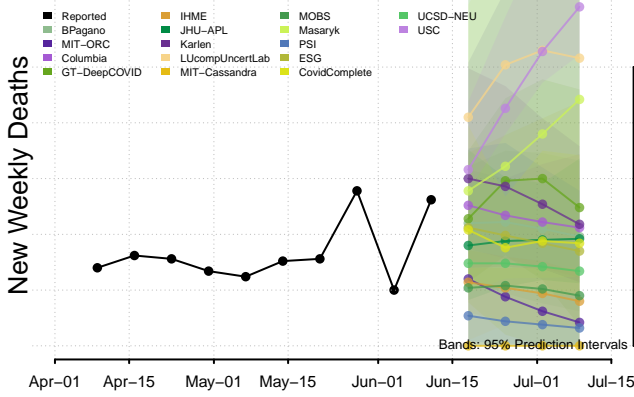
### Maryland



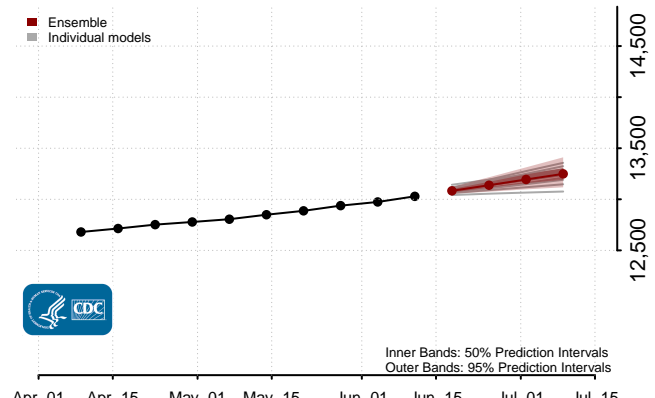
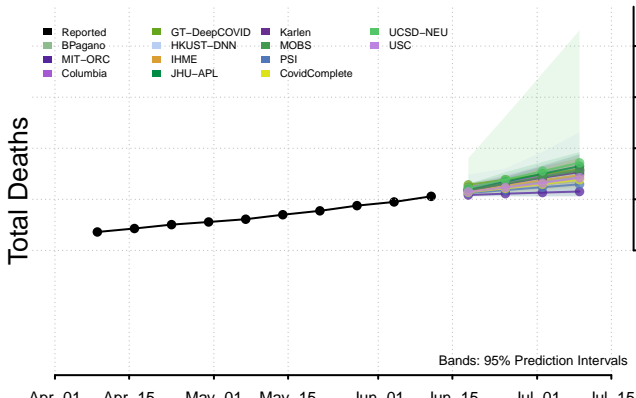
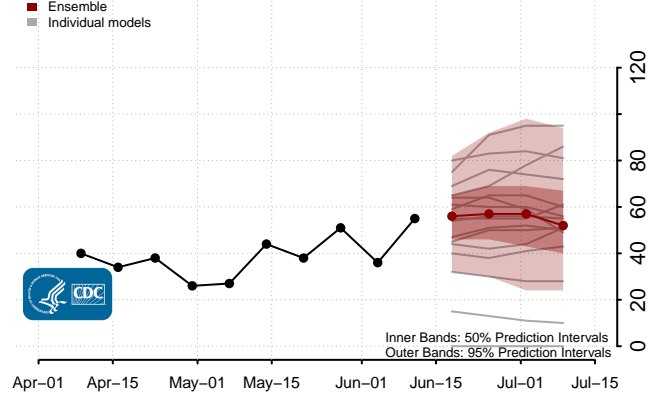
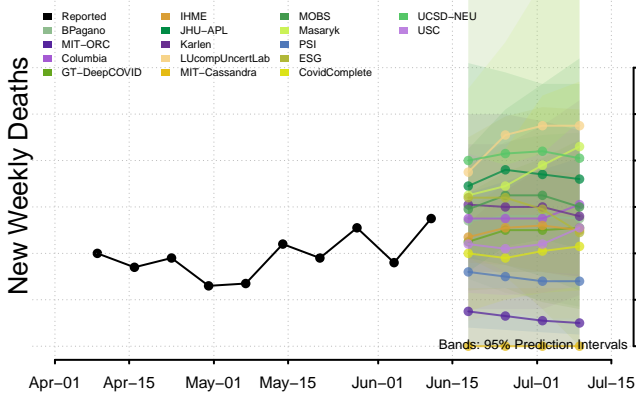
### Massachusetts



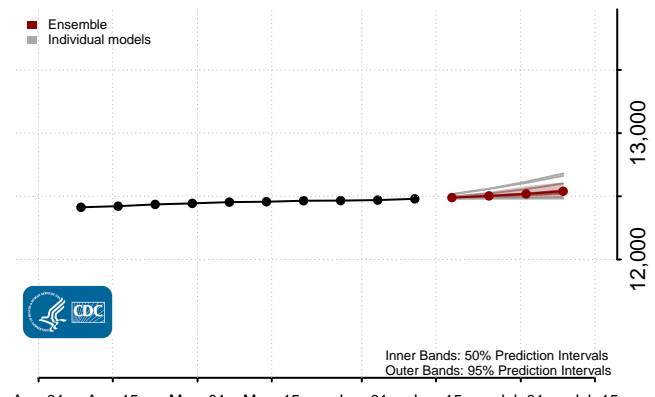
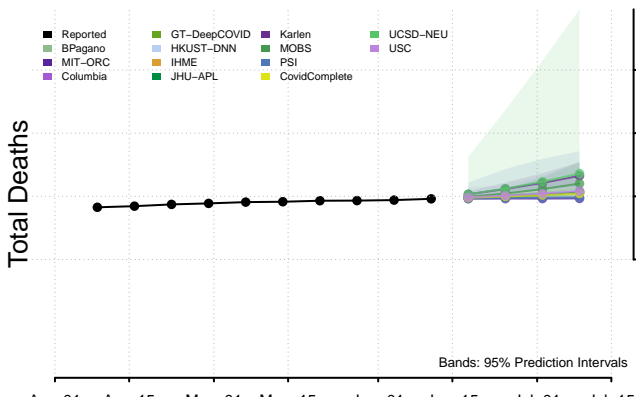
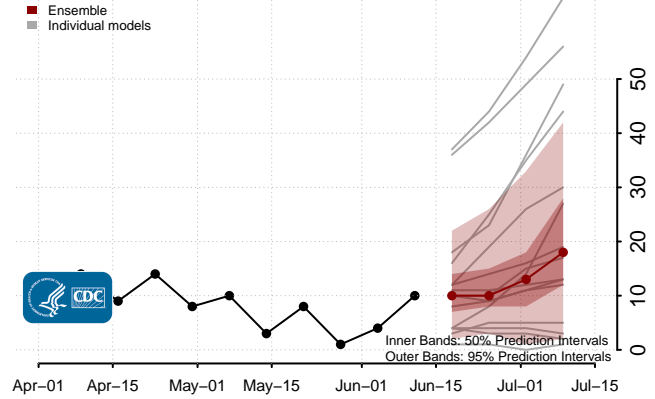
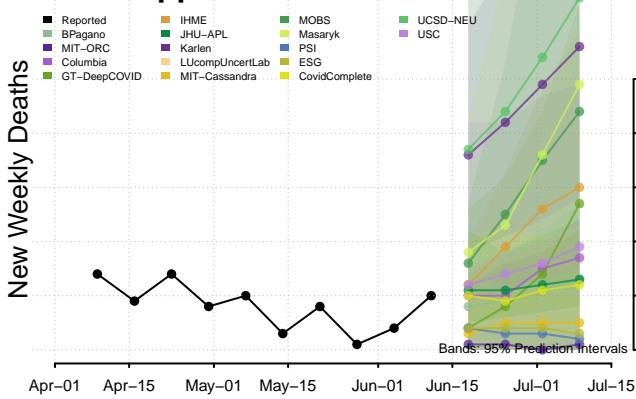
### Michigan



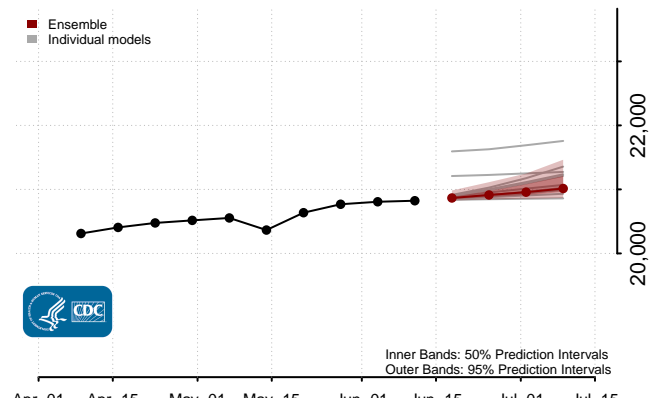
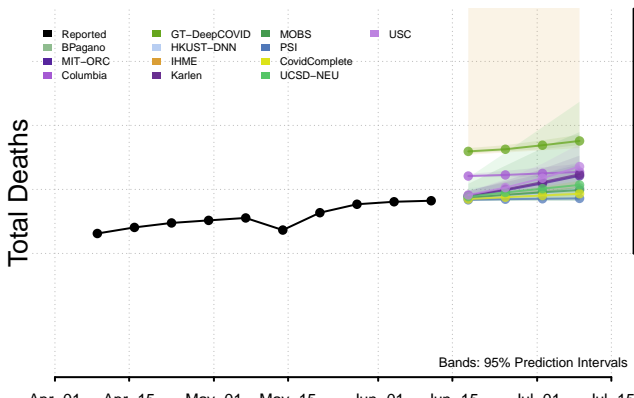
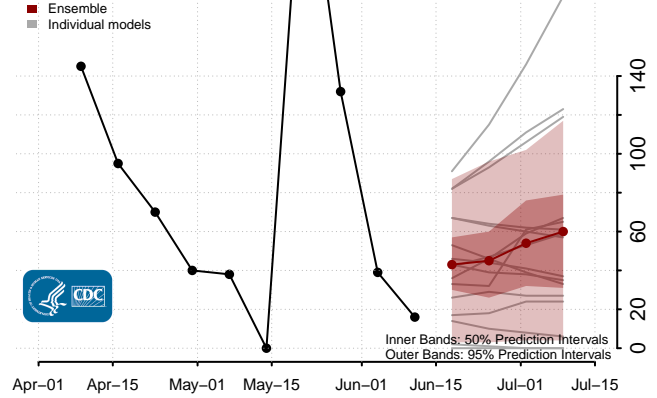
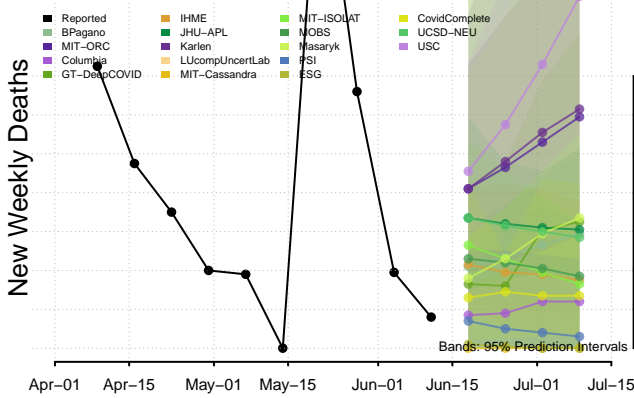
### Minnesota



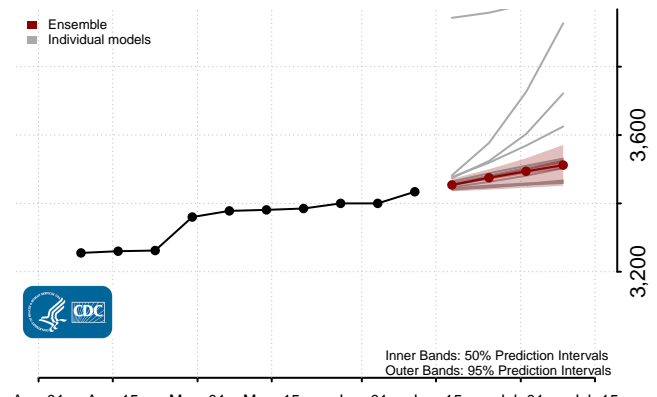
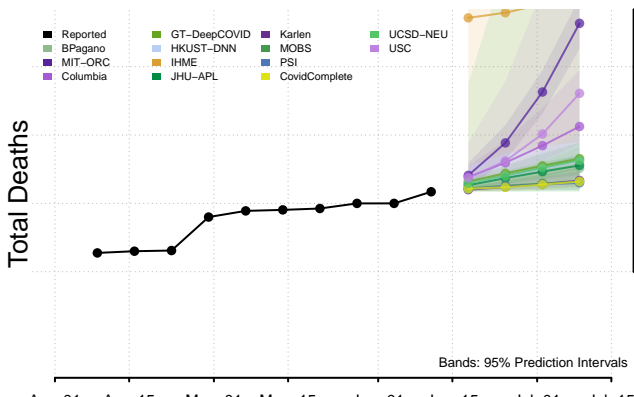
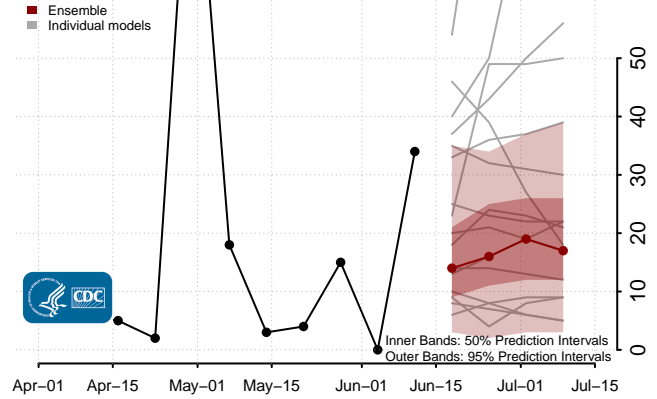
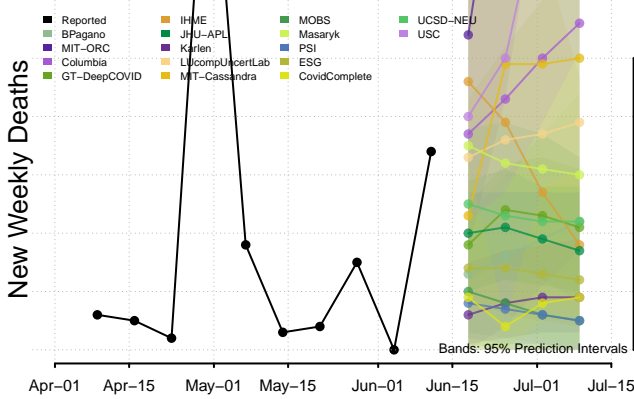
### Mississippi



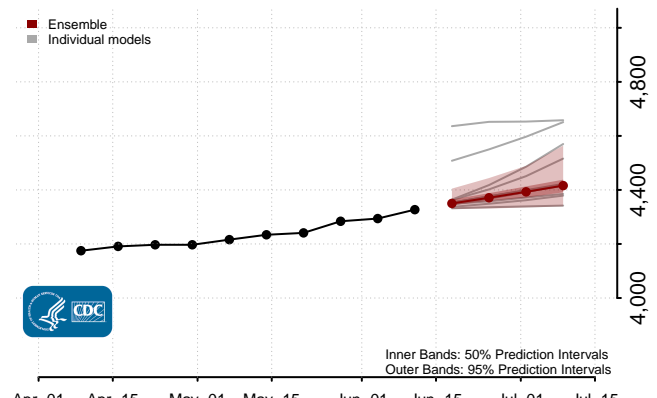
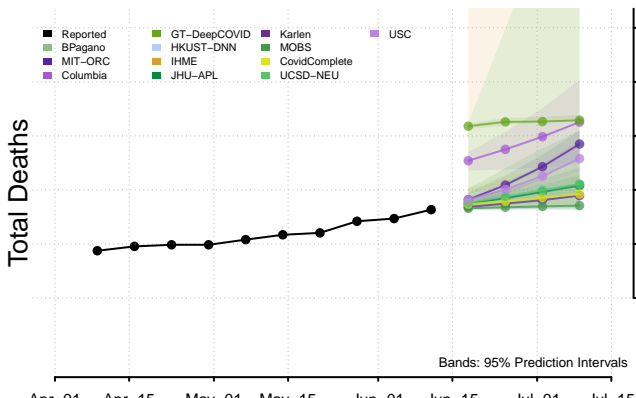
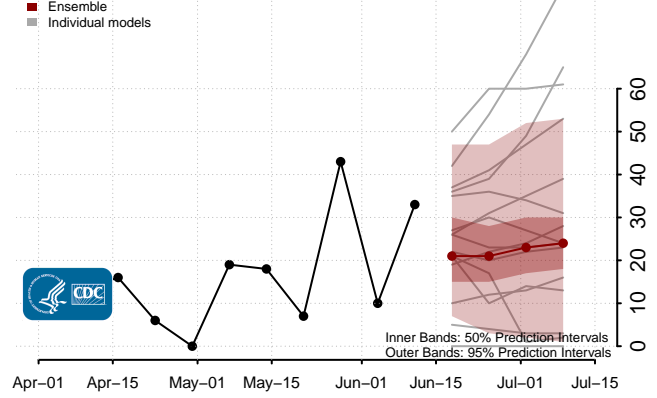
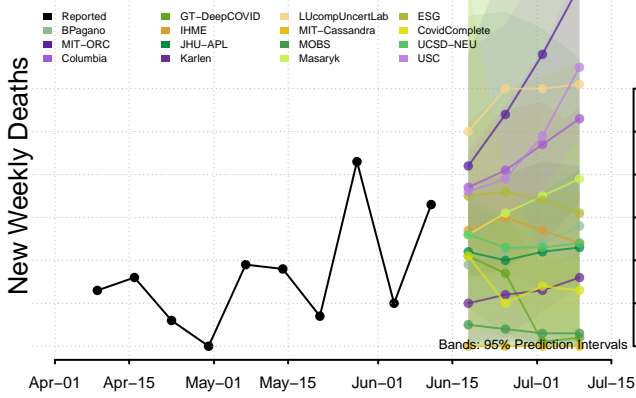
### Missouri



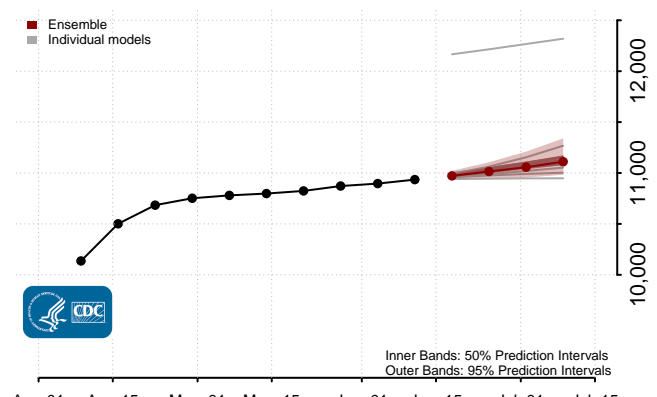
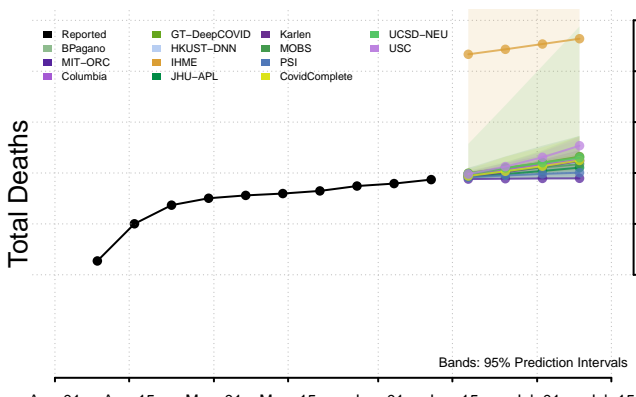
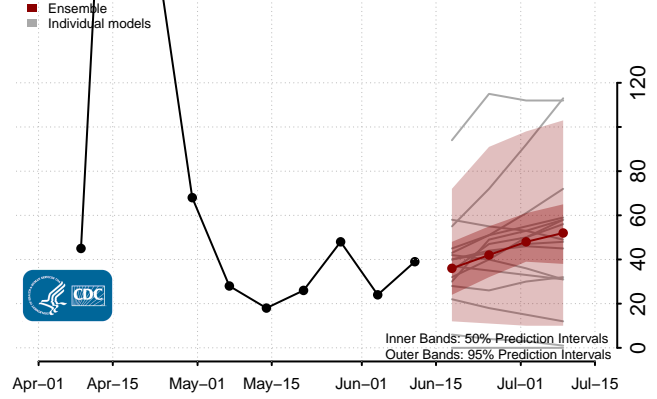
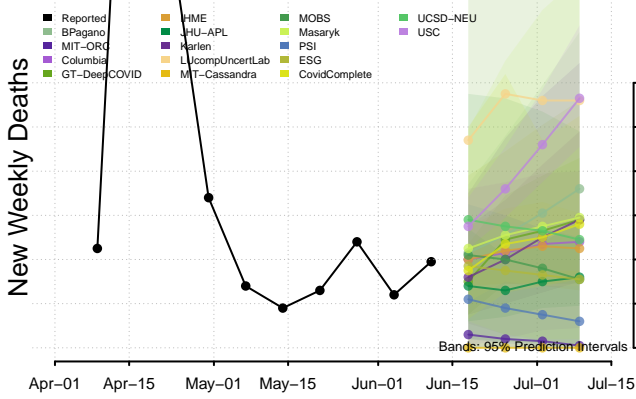
### Montana



### Nebraska

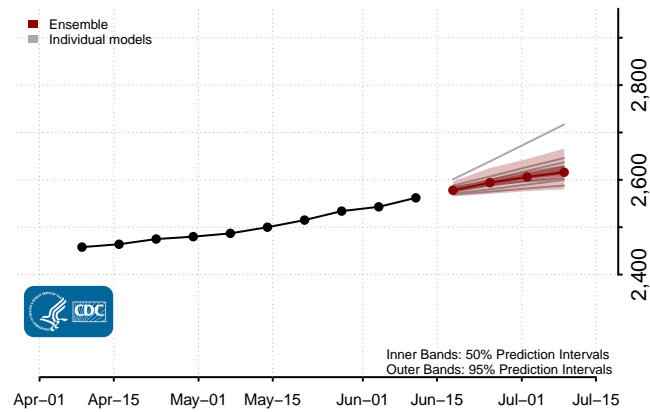
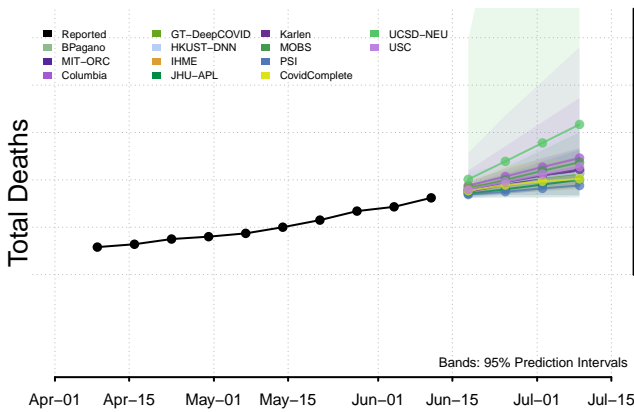
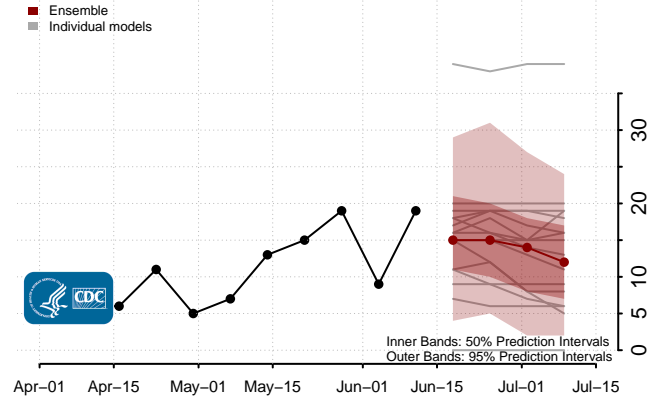
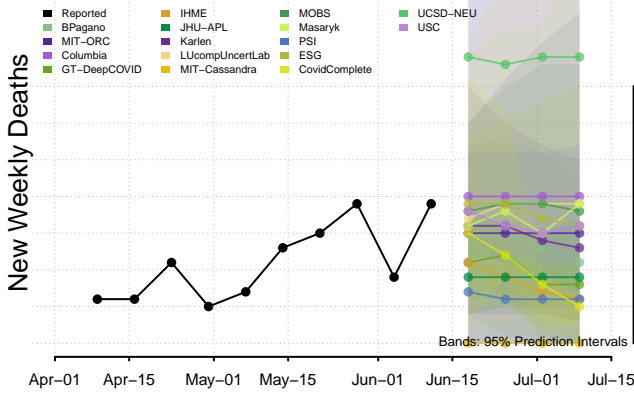


### Nevada

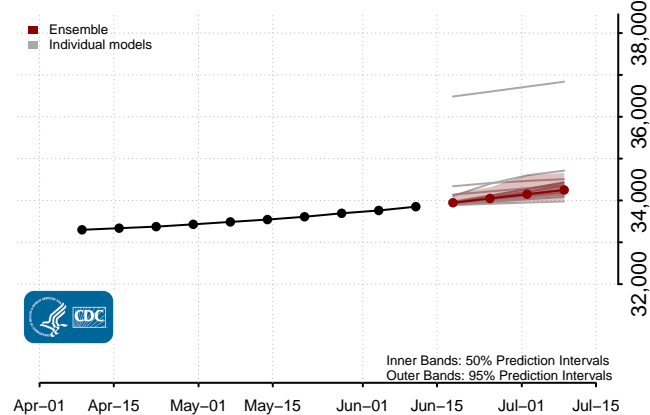
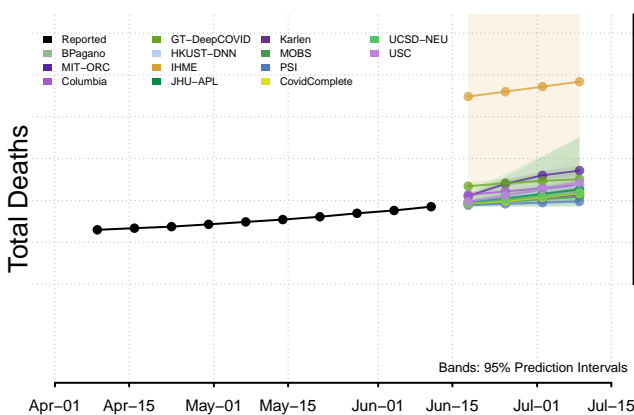
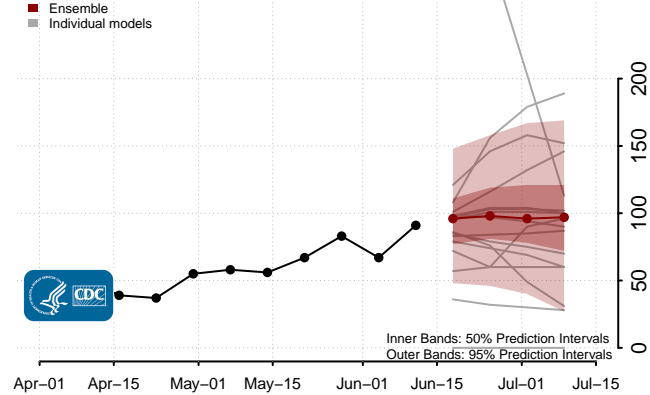
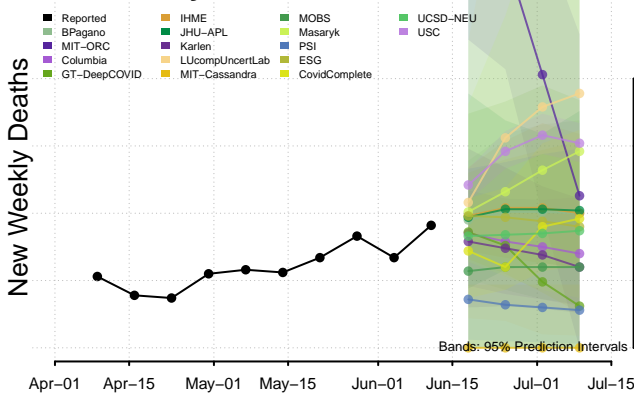




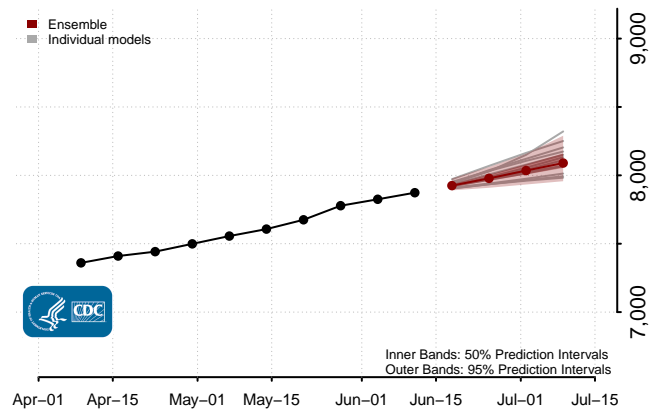
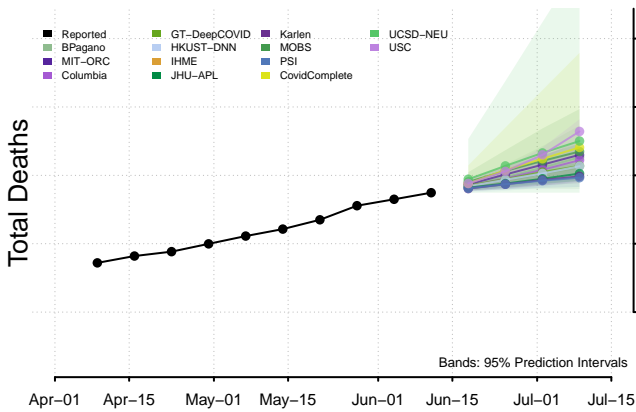
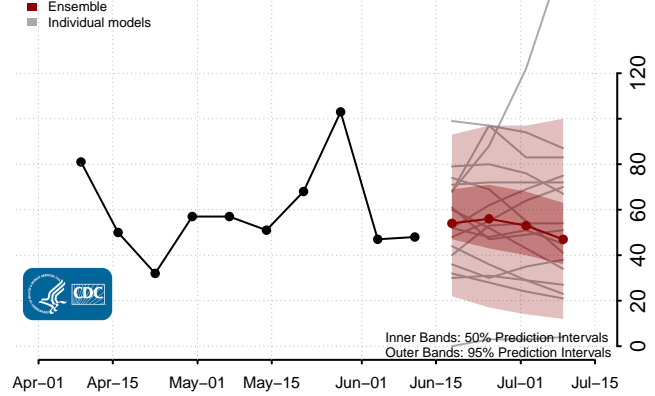
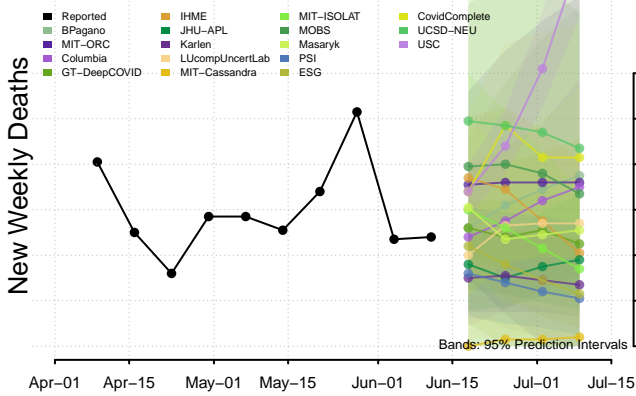
### New Hampshire



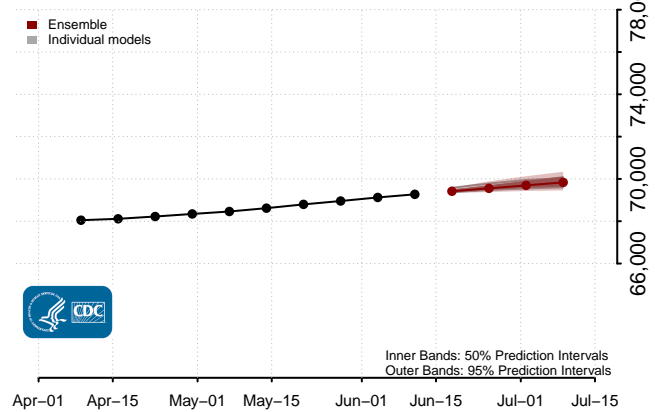
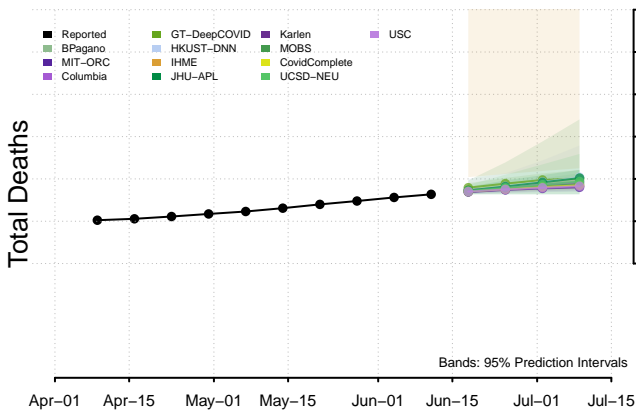
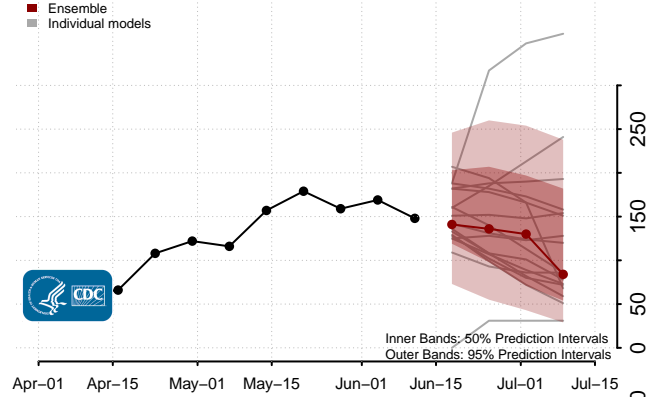
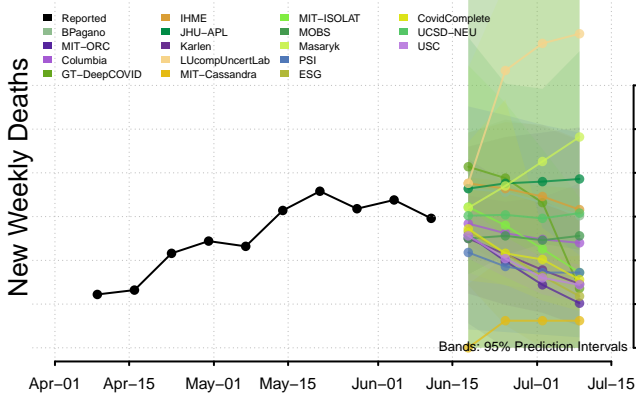
### New Jersey



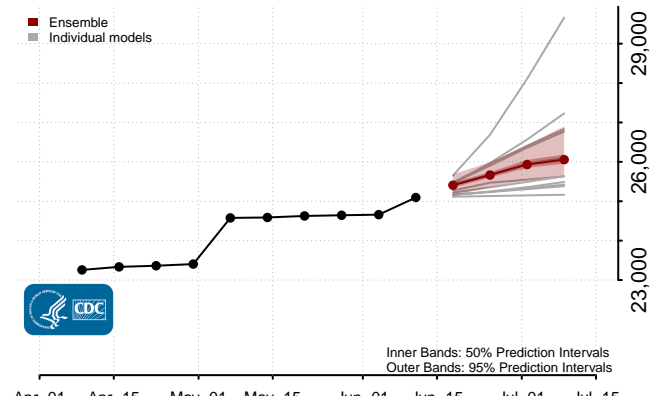
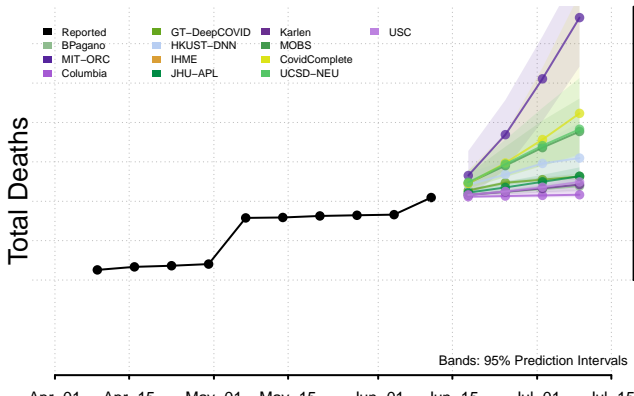
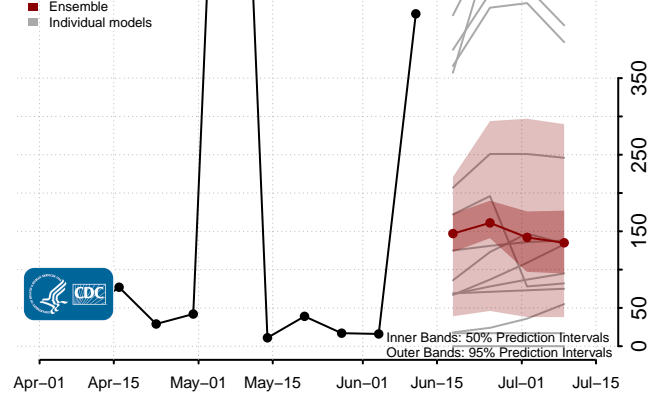
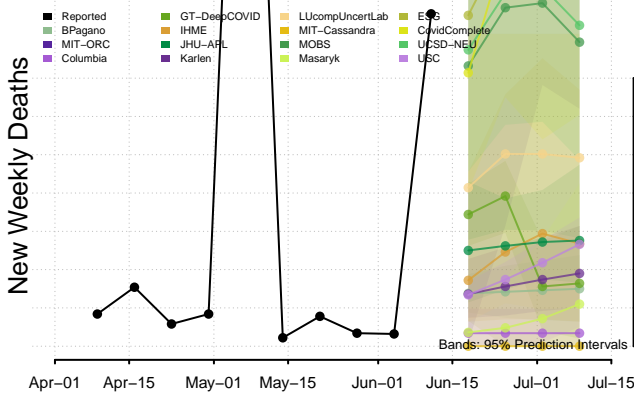
### New Mexico



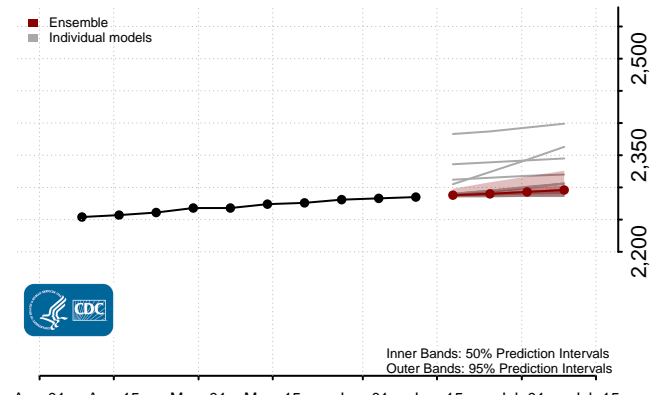
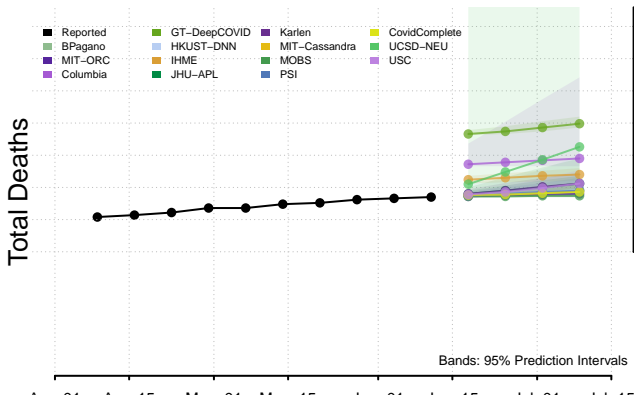
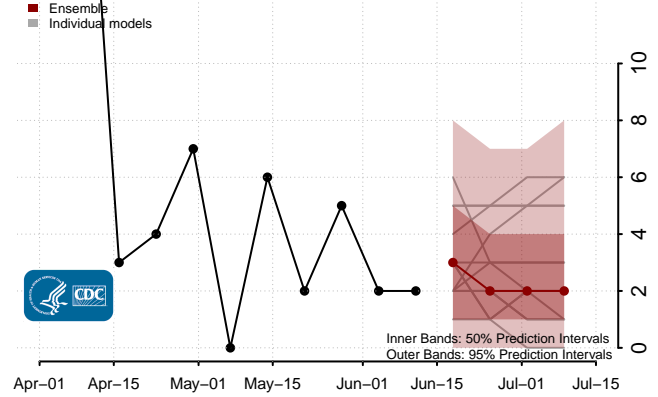
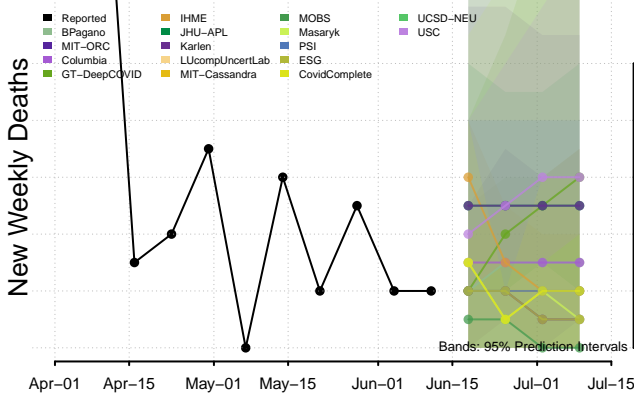
### New York



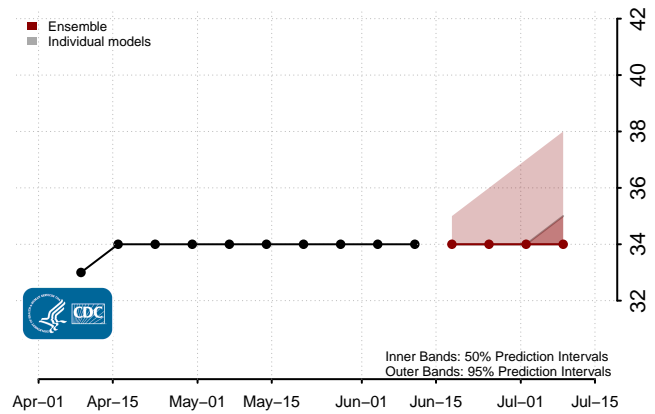
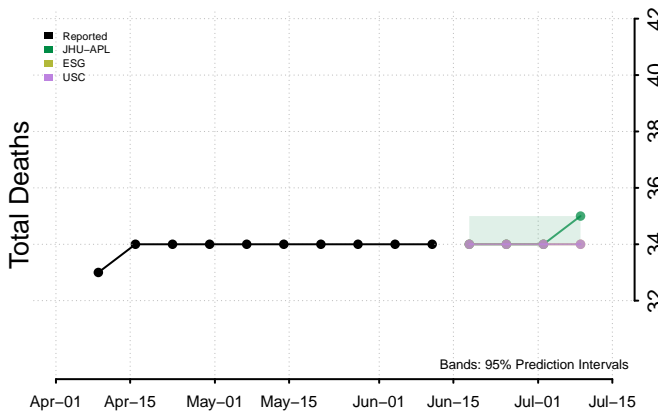
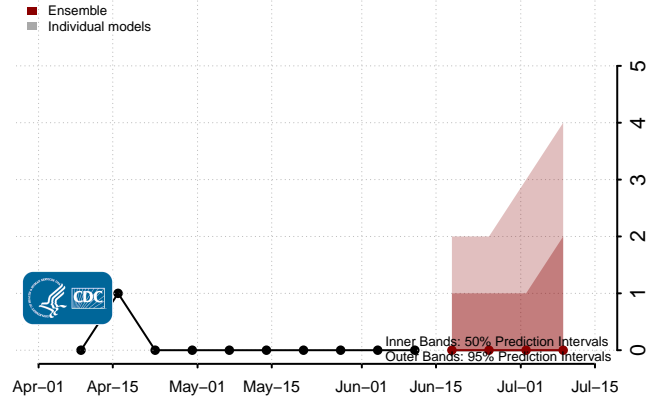
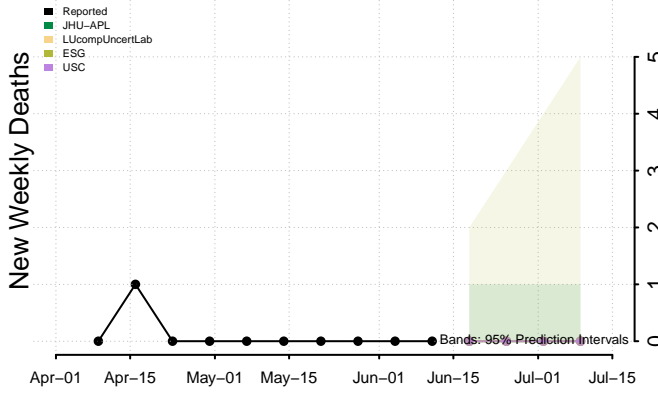
### North Carolina



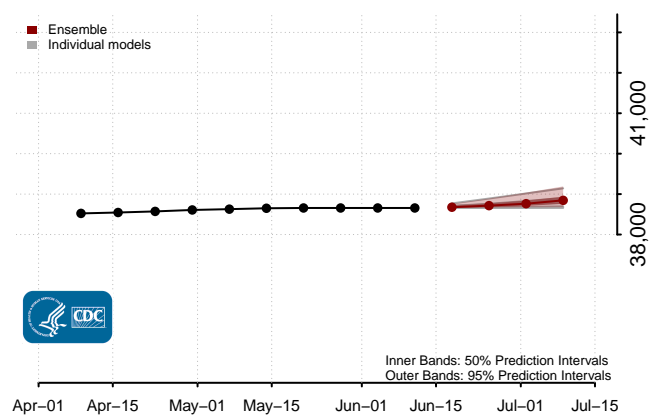
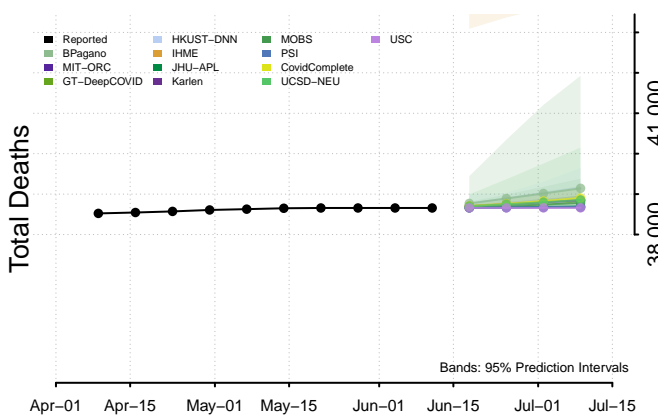
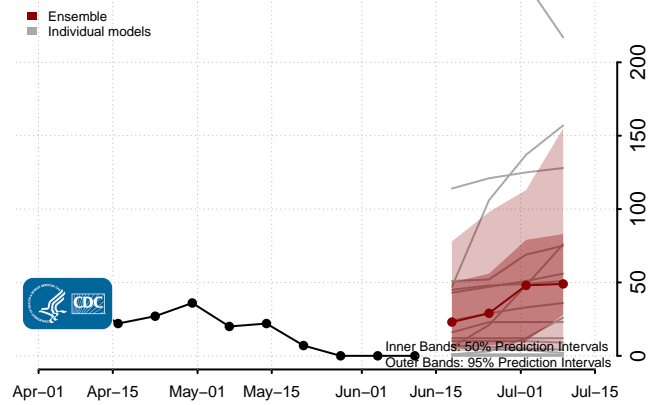
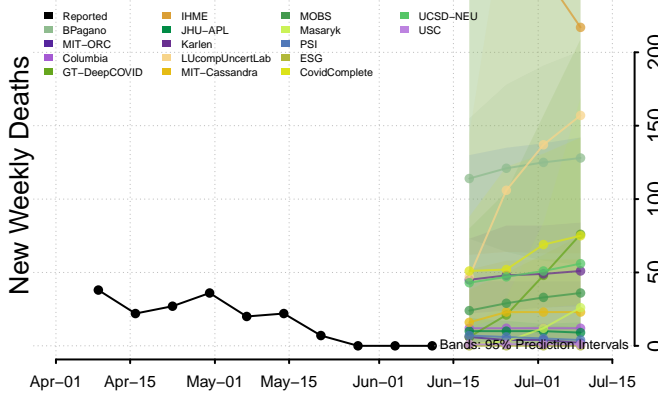
### North Dakota



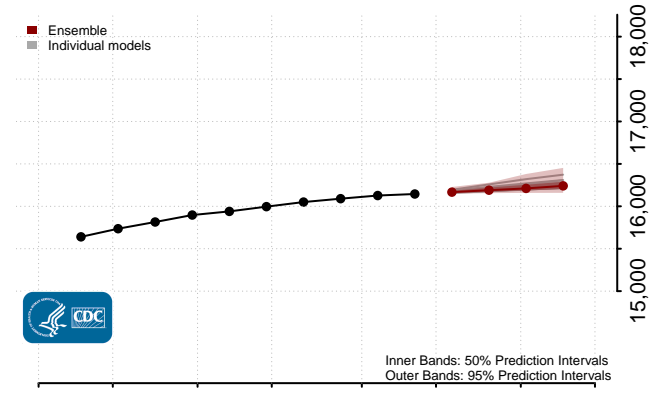
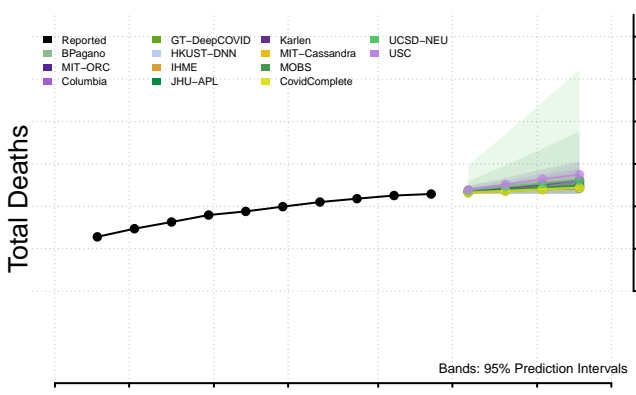
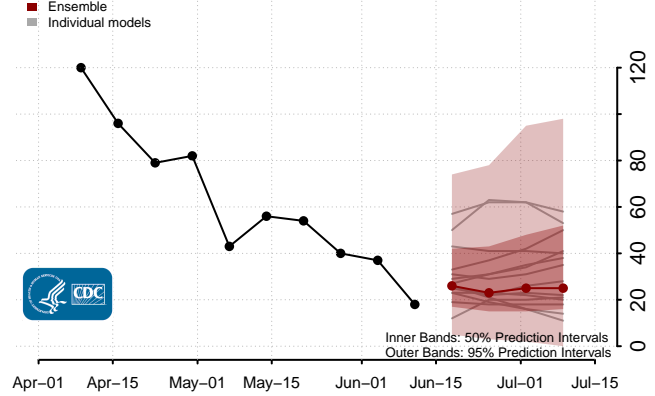
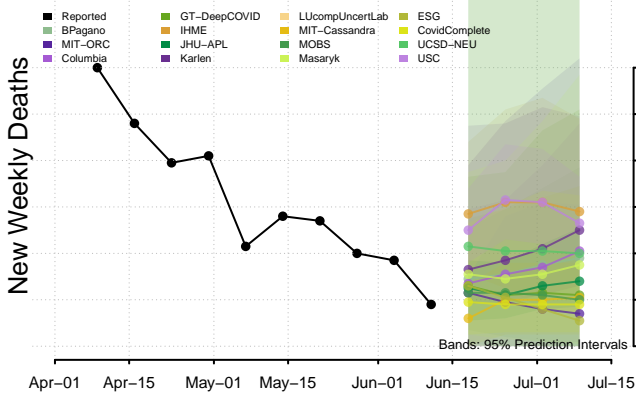
### Northern Mariana Islands



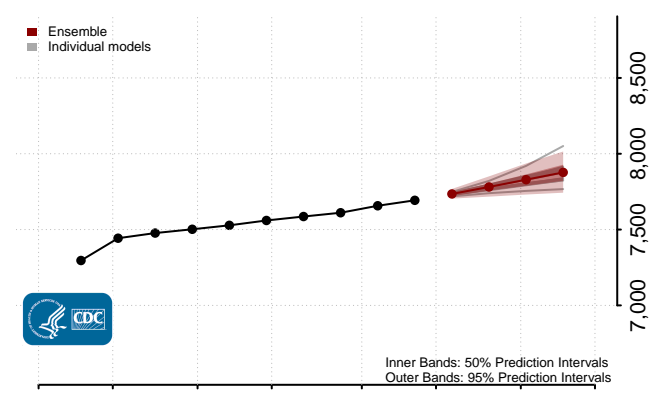
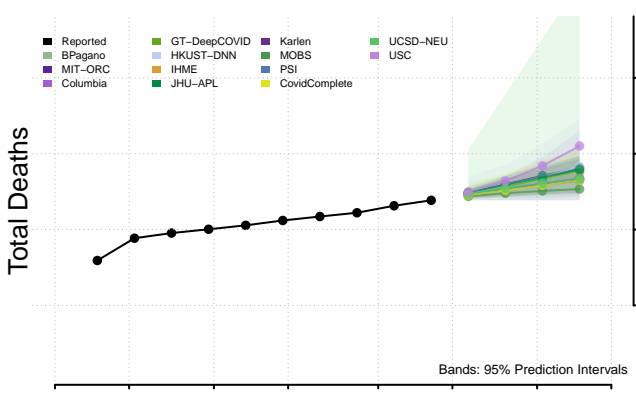
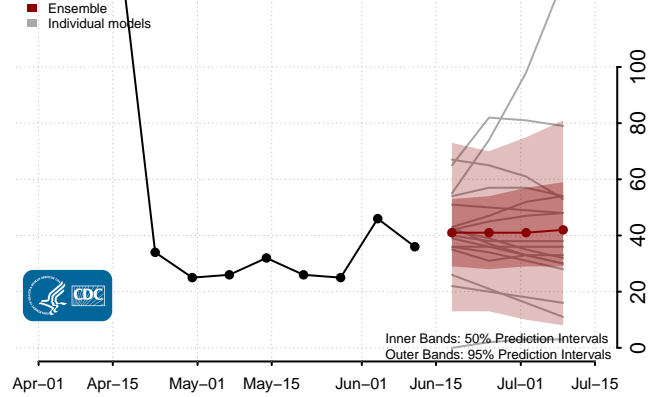
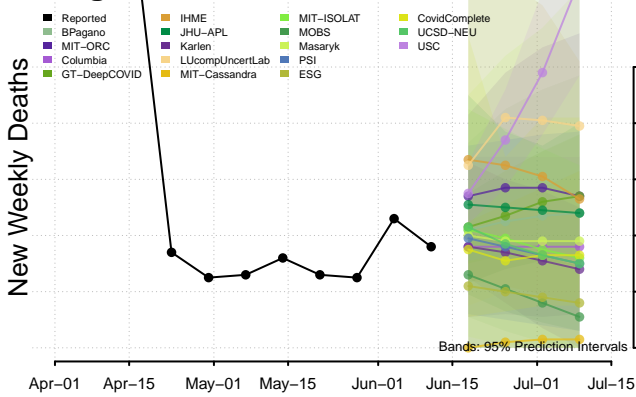
### Ohio



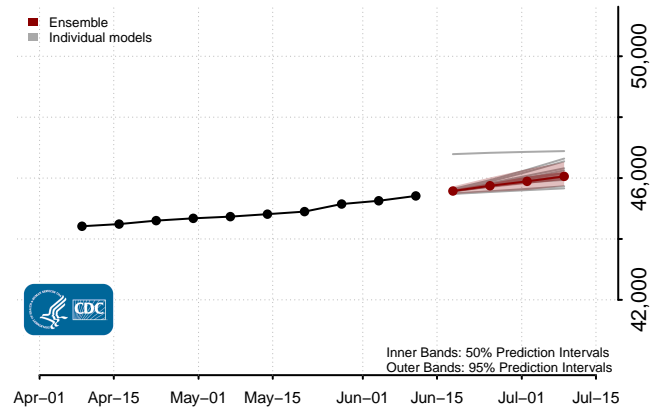
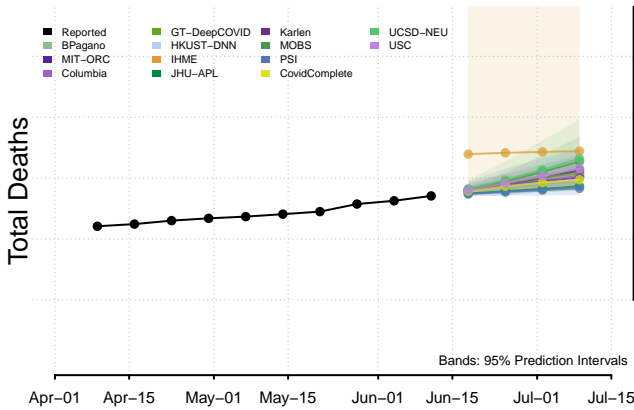
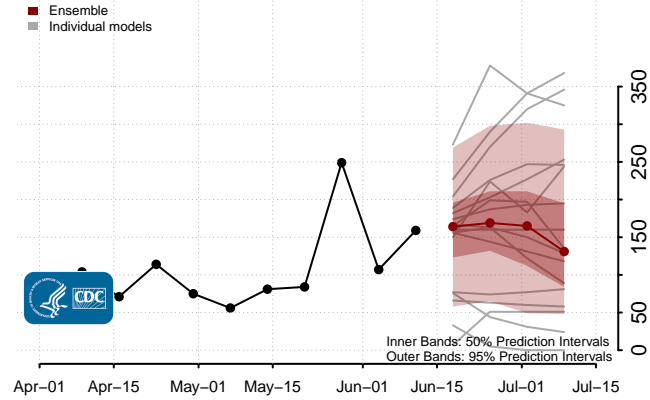
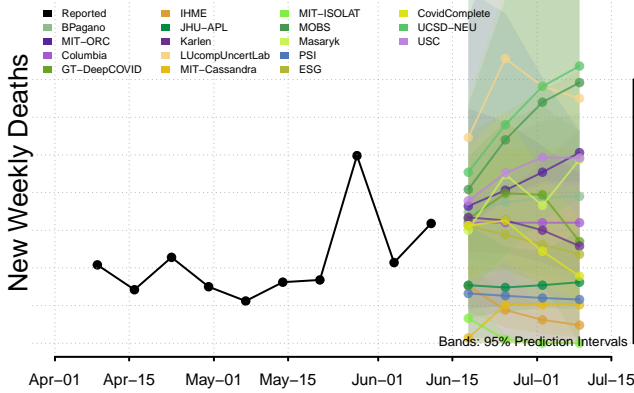
### Oklahoma



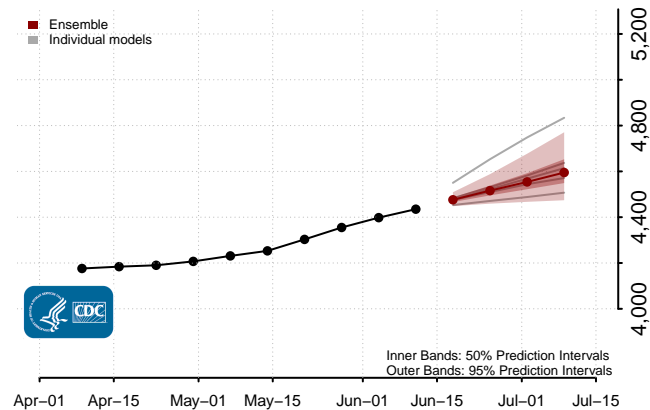
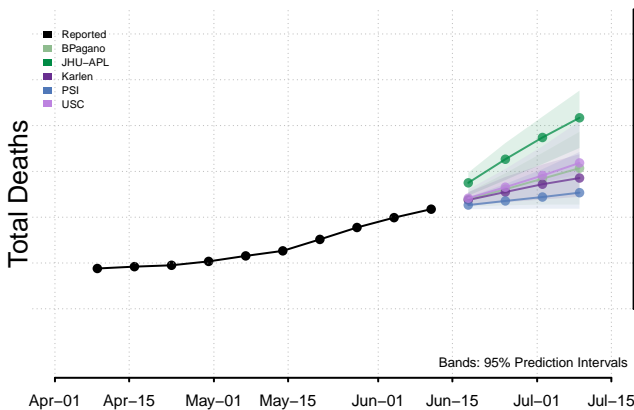
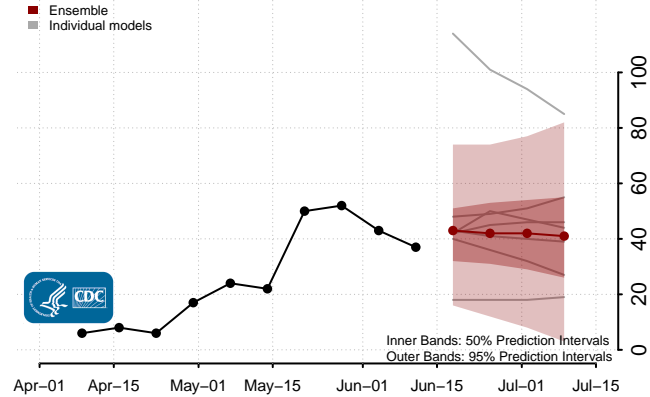
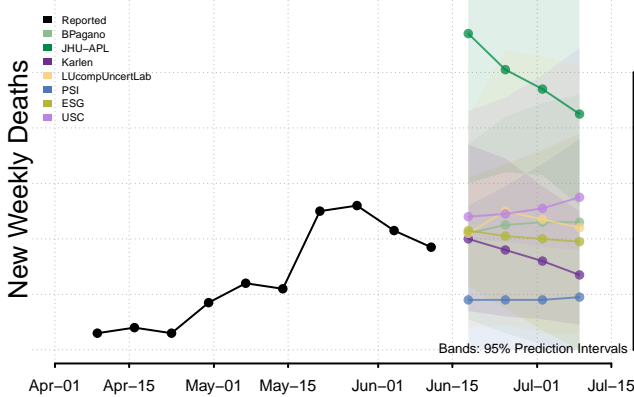
### Oregon



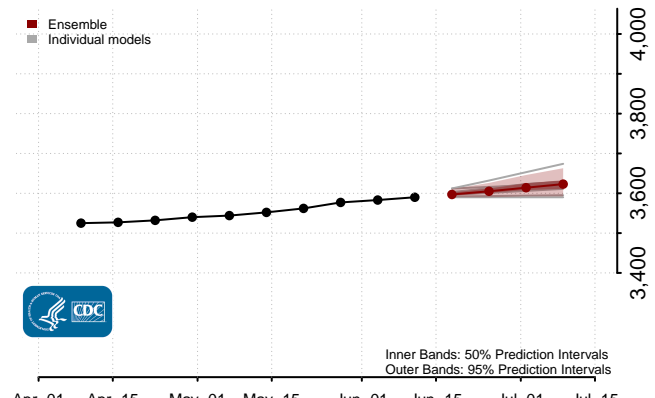
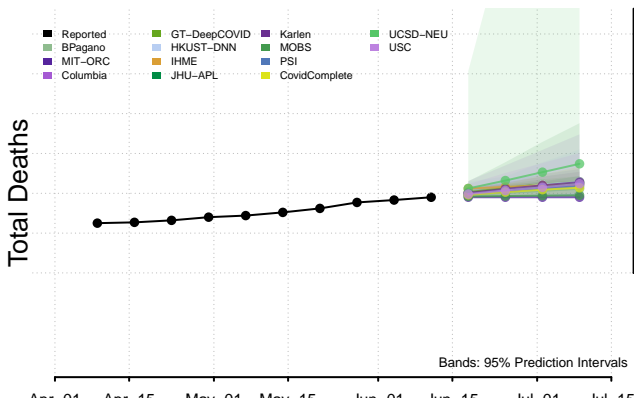
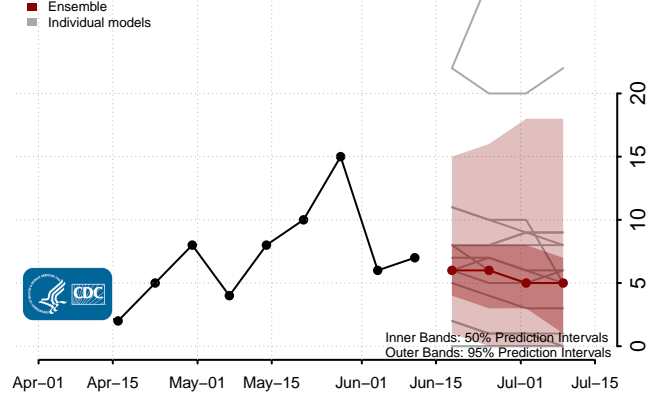
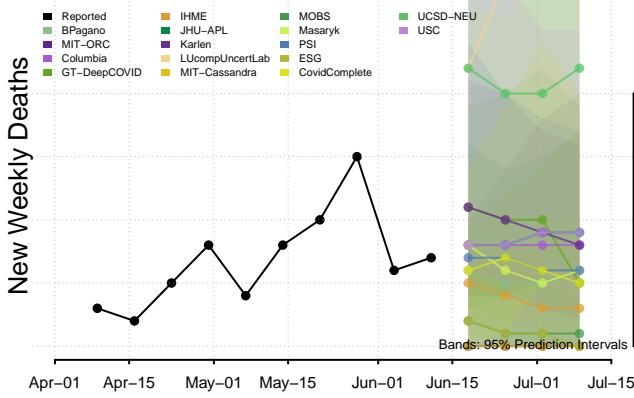
### Pennsylvania



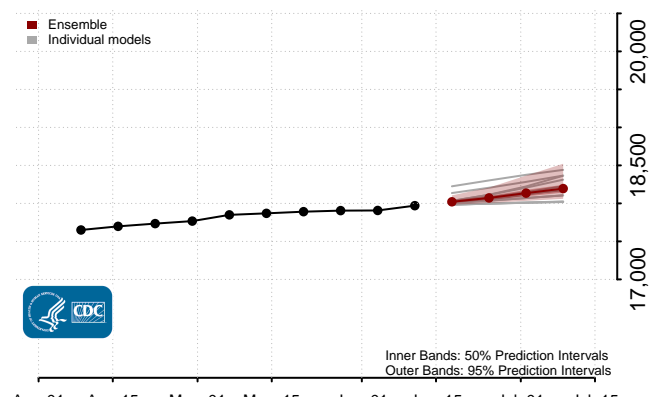
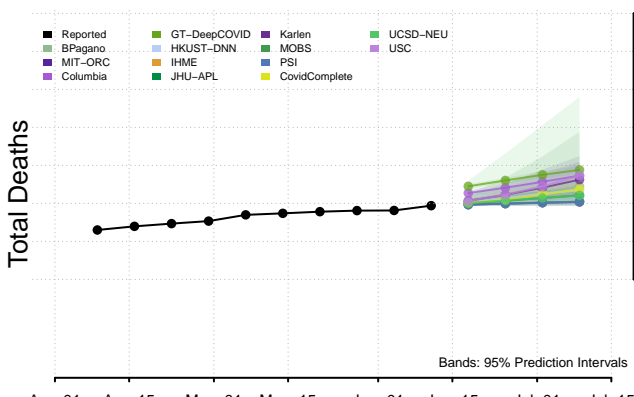
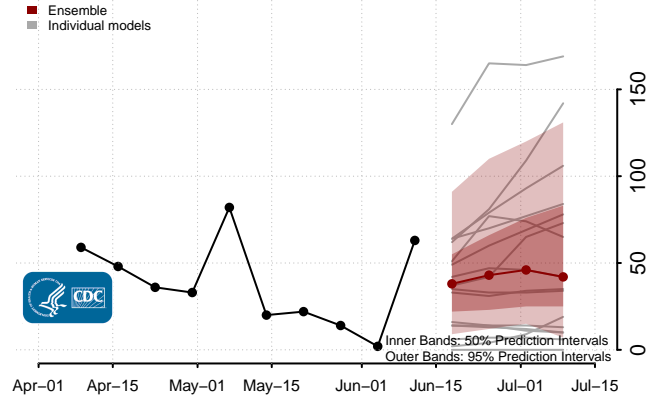
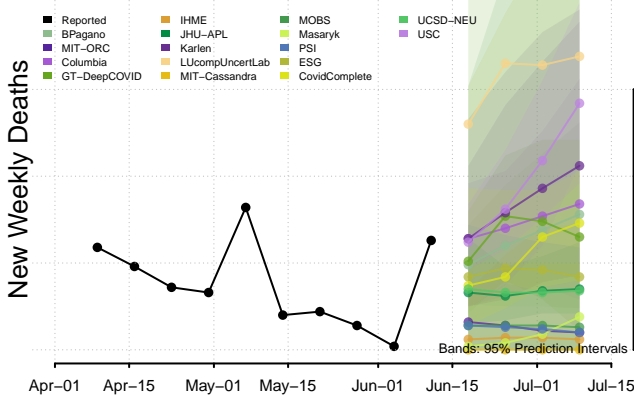
### Puerto Rico



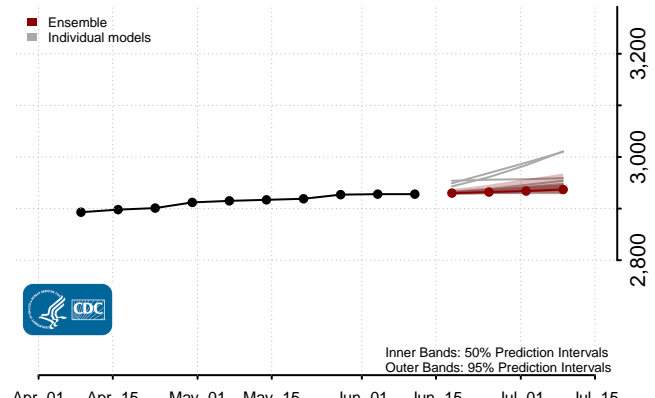
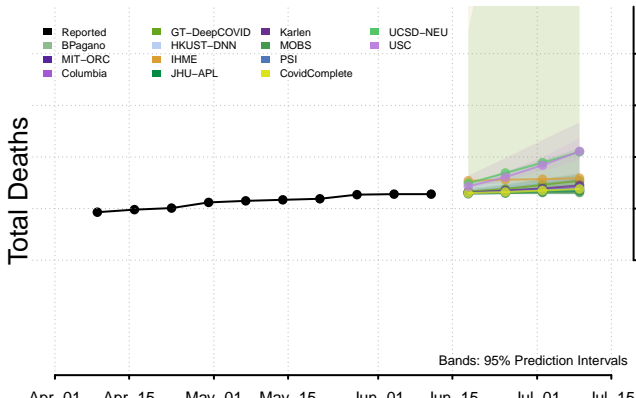
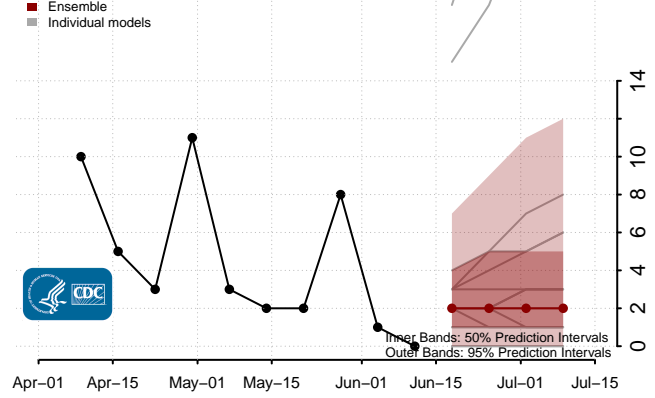
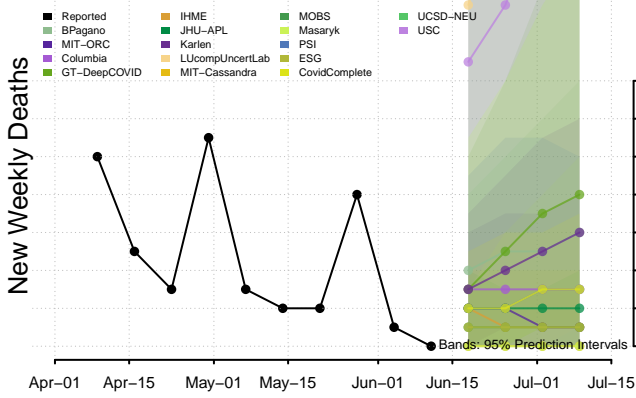
### Rhode Island



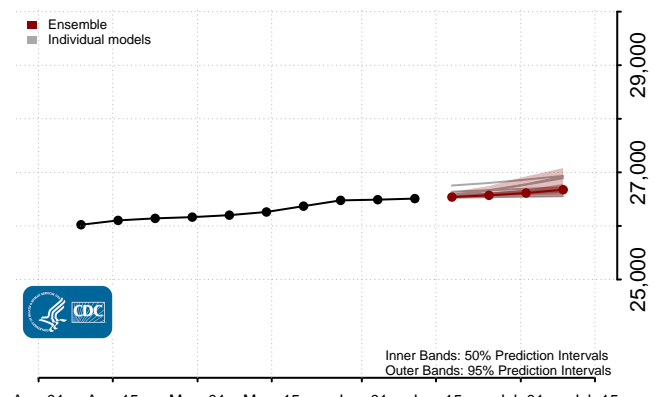
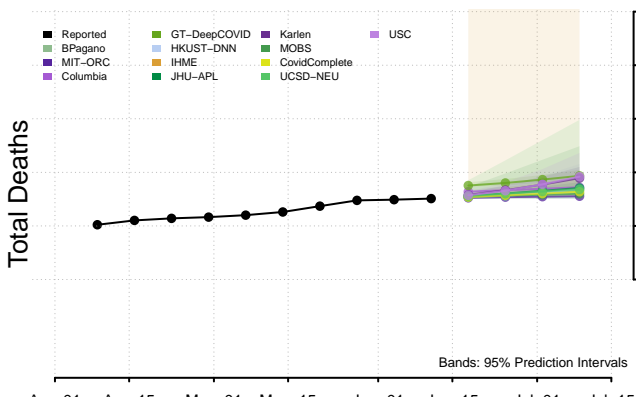
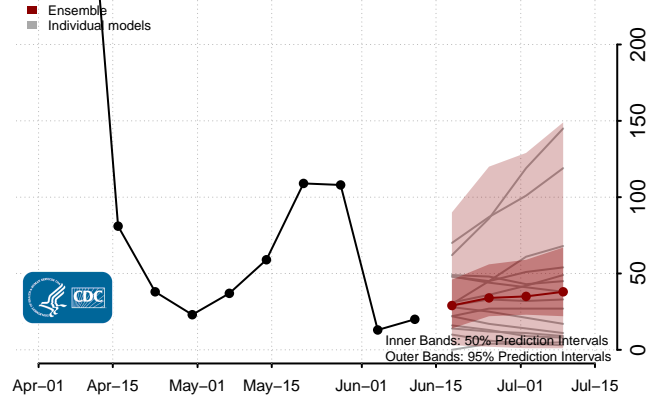
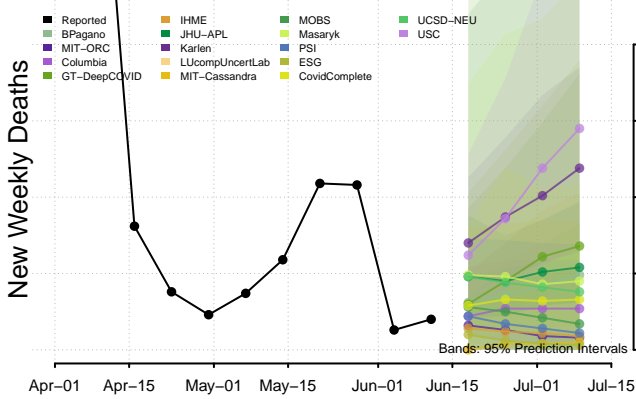
### South Carolina



### South Dakota

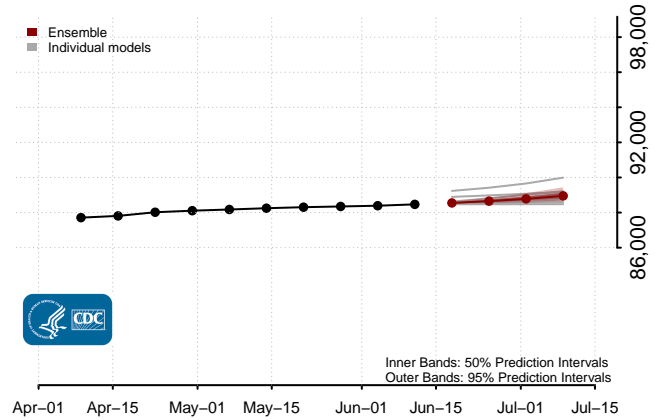
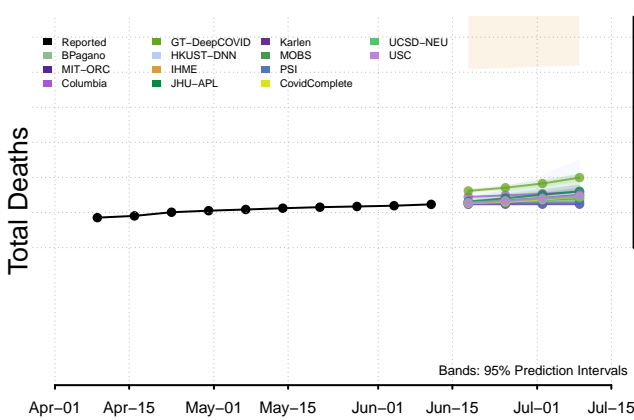
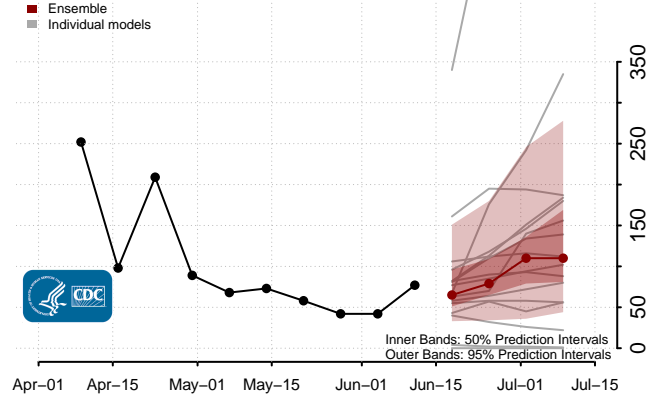
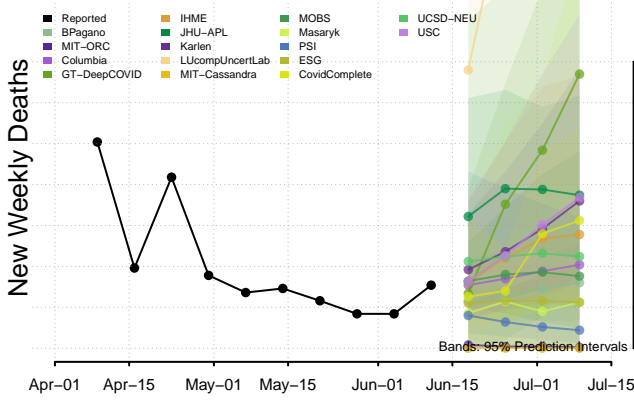


### Tennessee

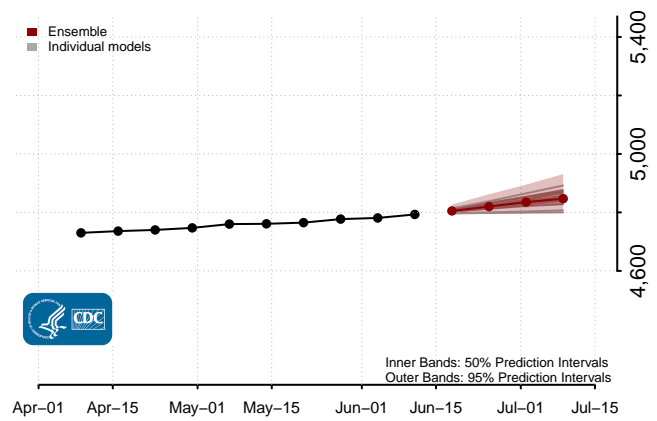
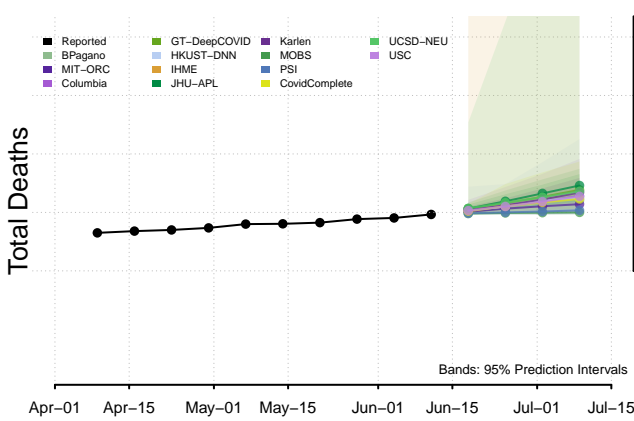
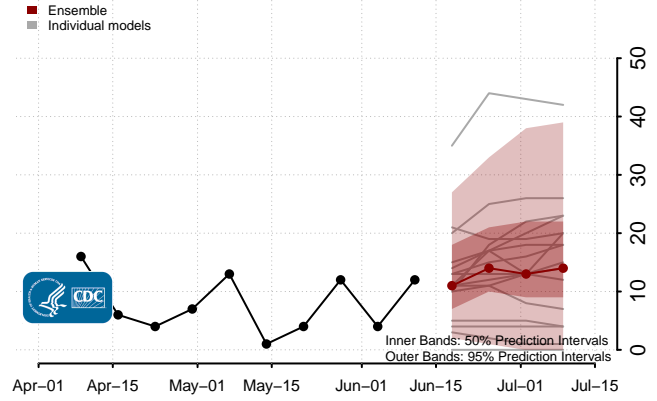
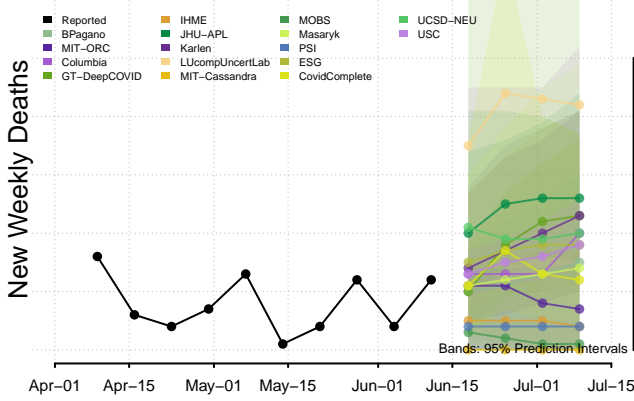




### Texas\*\*

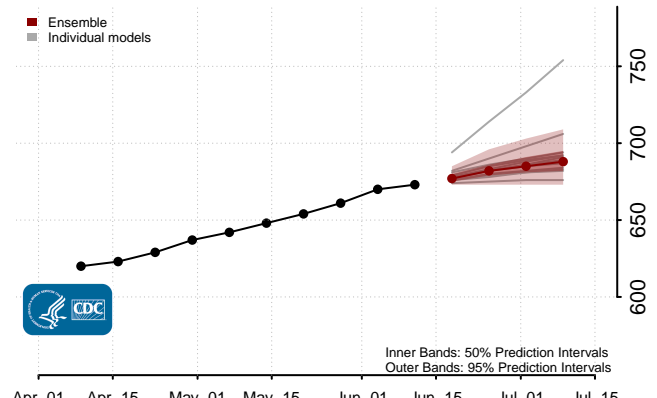
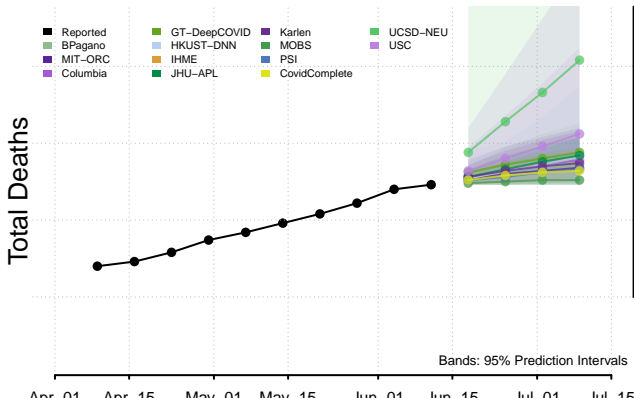
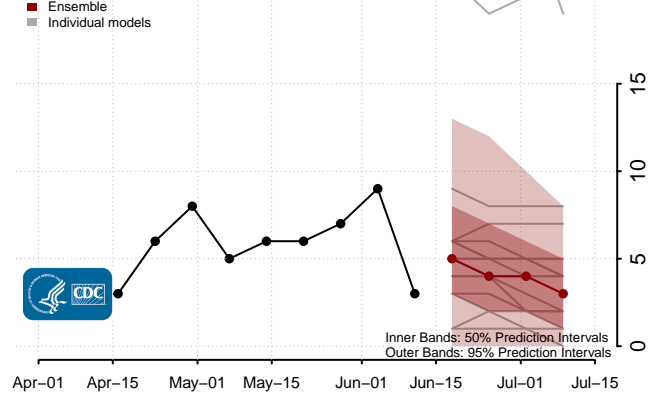
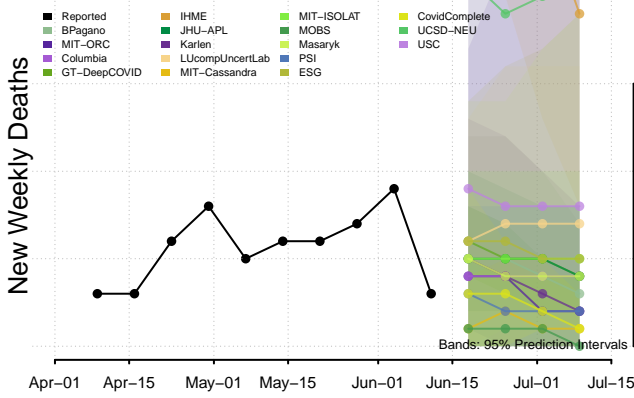


### Utah

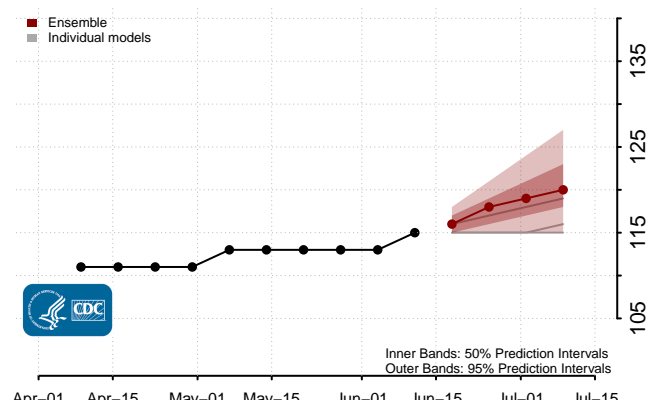
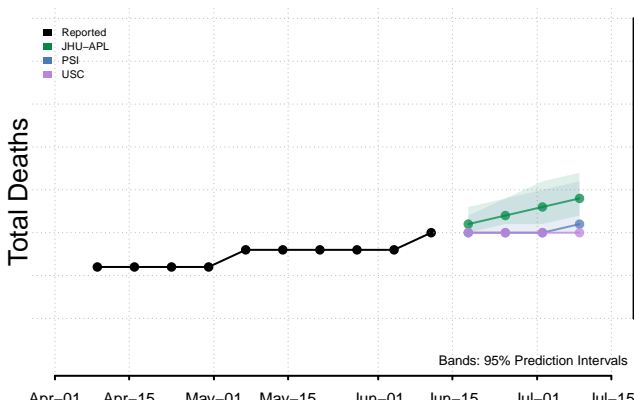
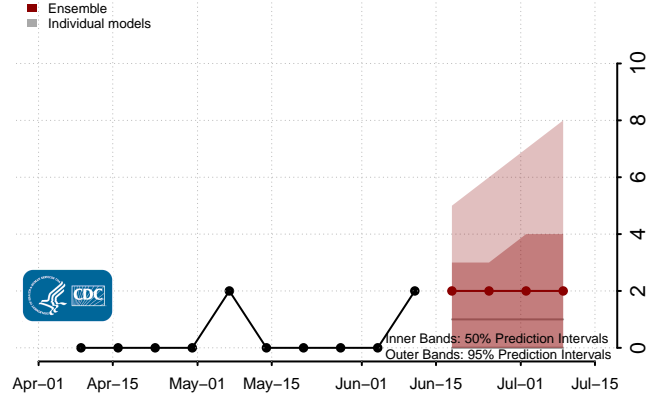
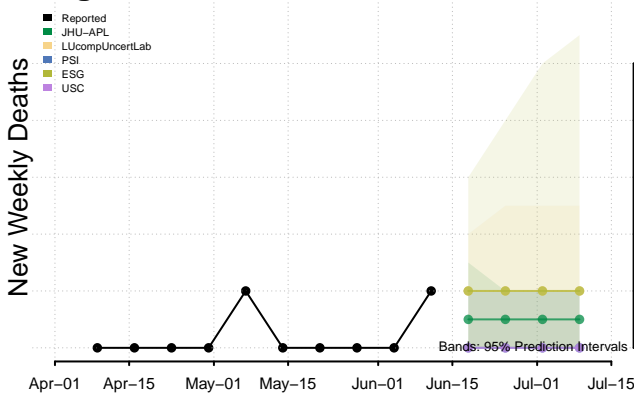


\*\*New weekly deaths may increase in this location over the next four weeks. For these locations, the ensemble forecast indicates a probability of 0.75 or greater that more deaths will be reported in week four of the forecast than in the last reported week.

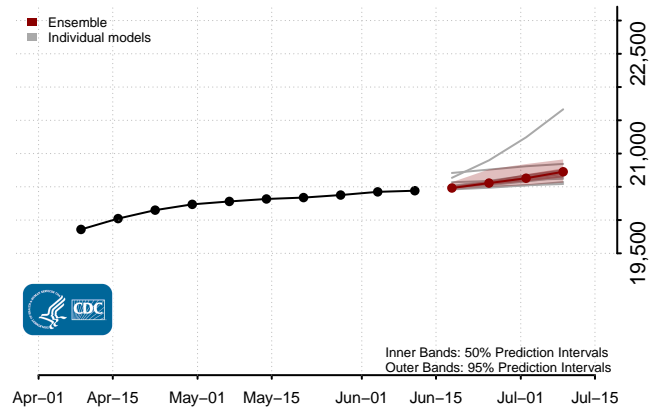
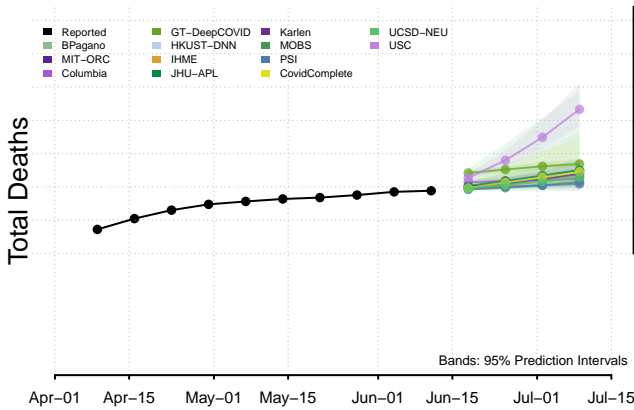
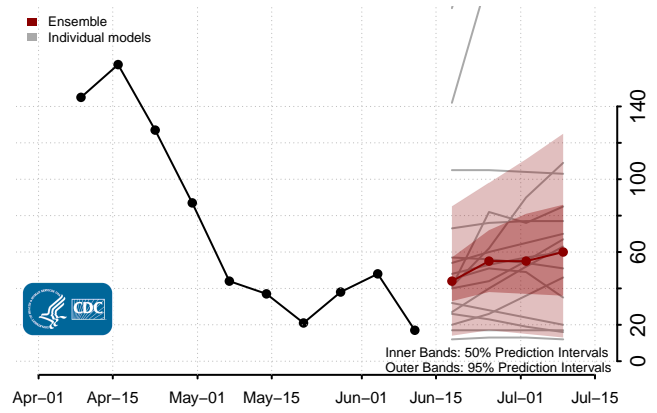
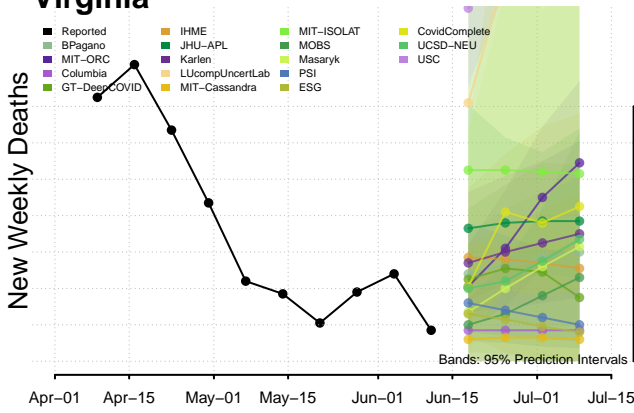
### Vermont



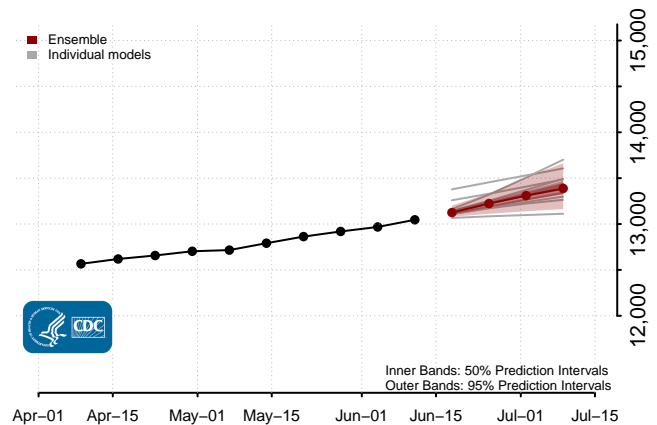
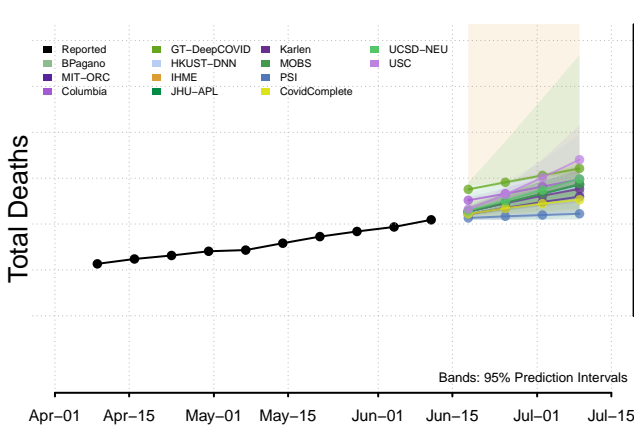
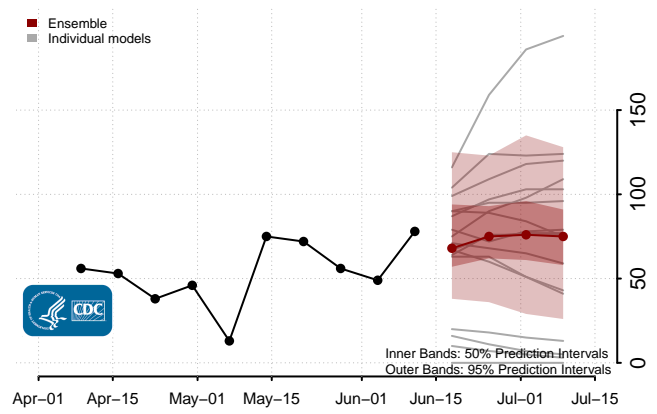
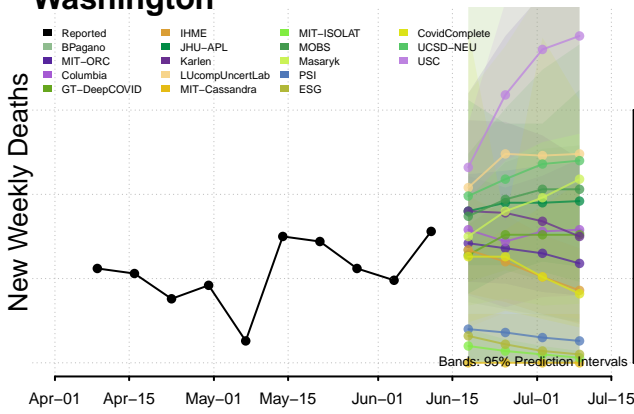
### Virgin Islands



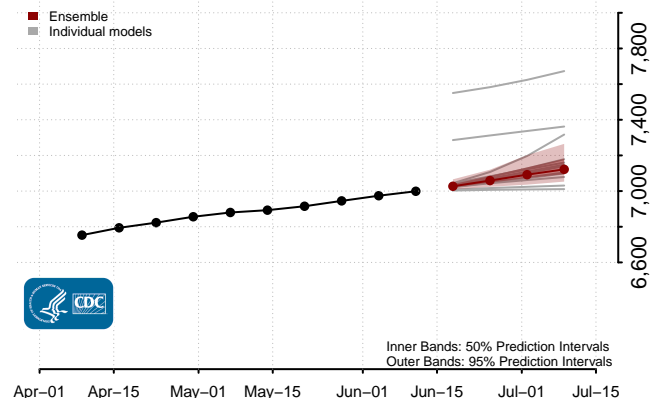
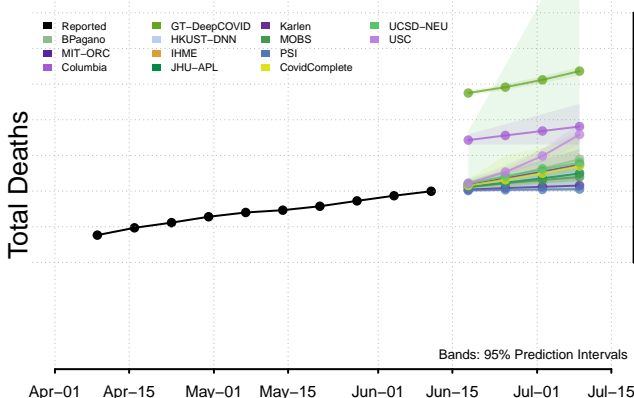
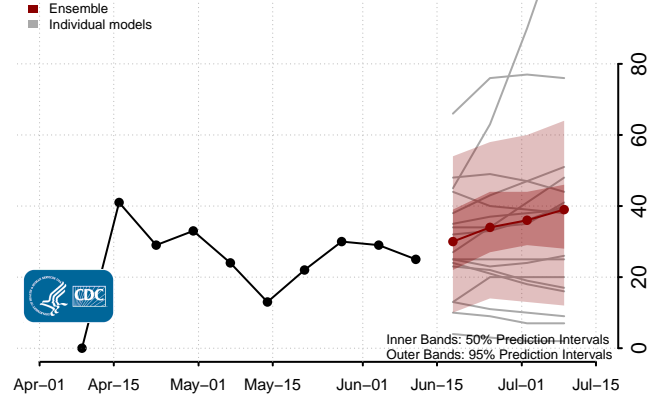
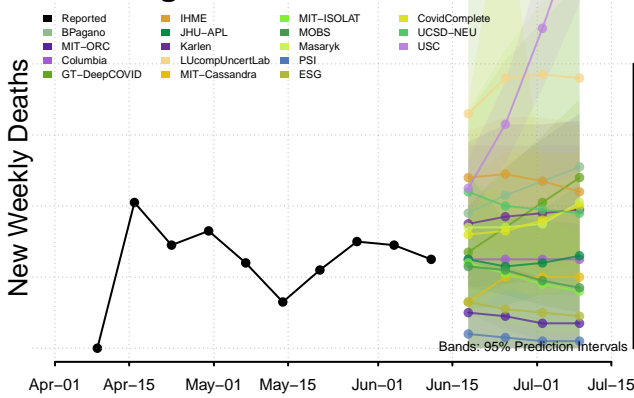
### Virginia



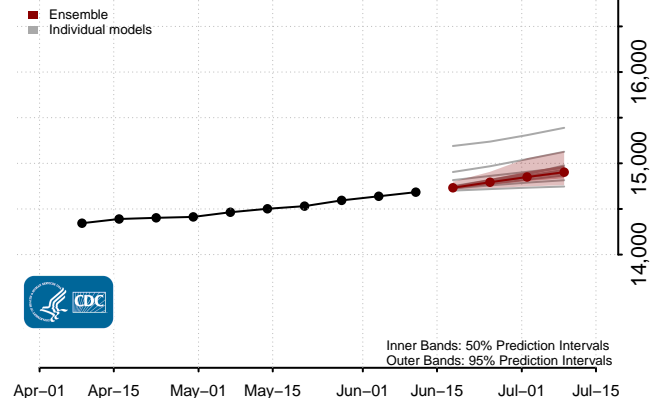
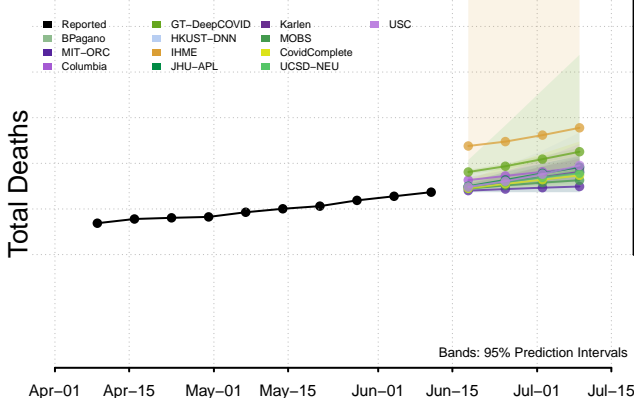
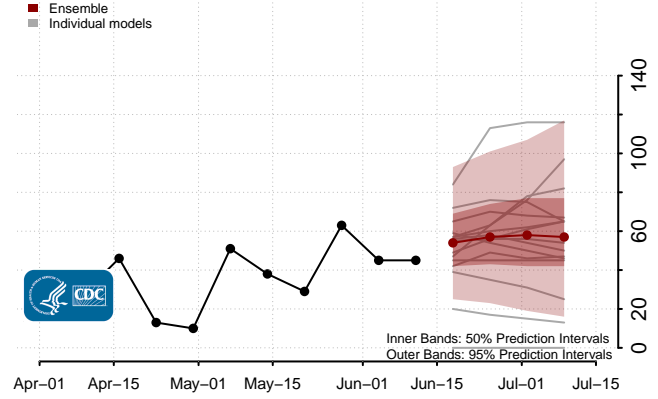
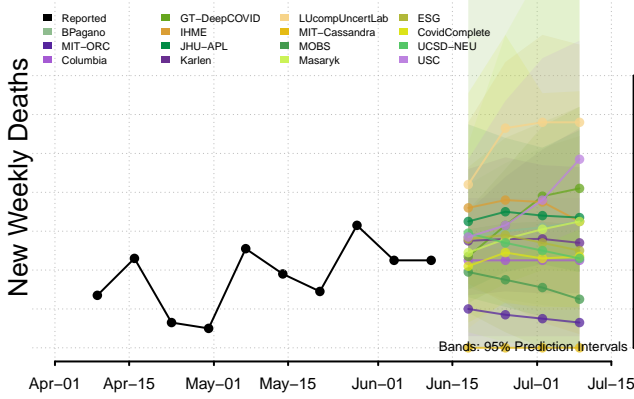
### Washington



### West Virginia



### Wisconsin



# Wyoming

