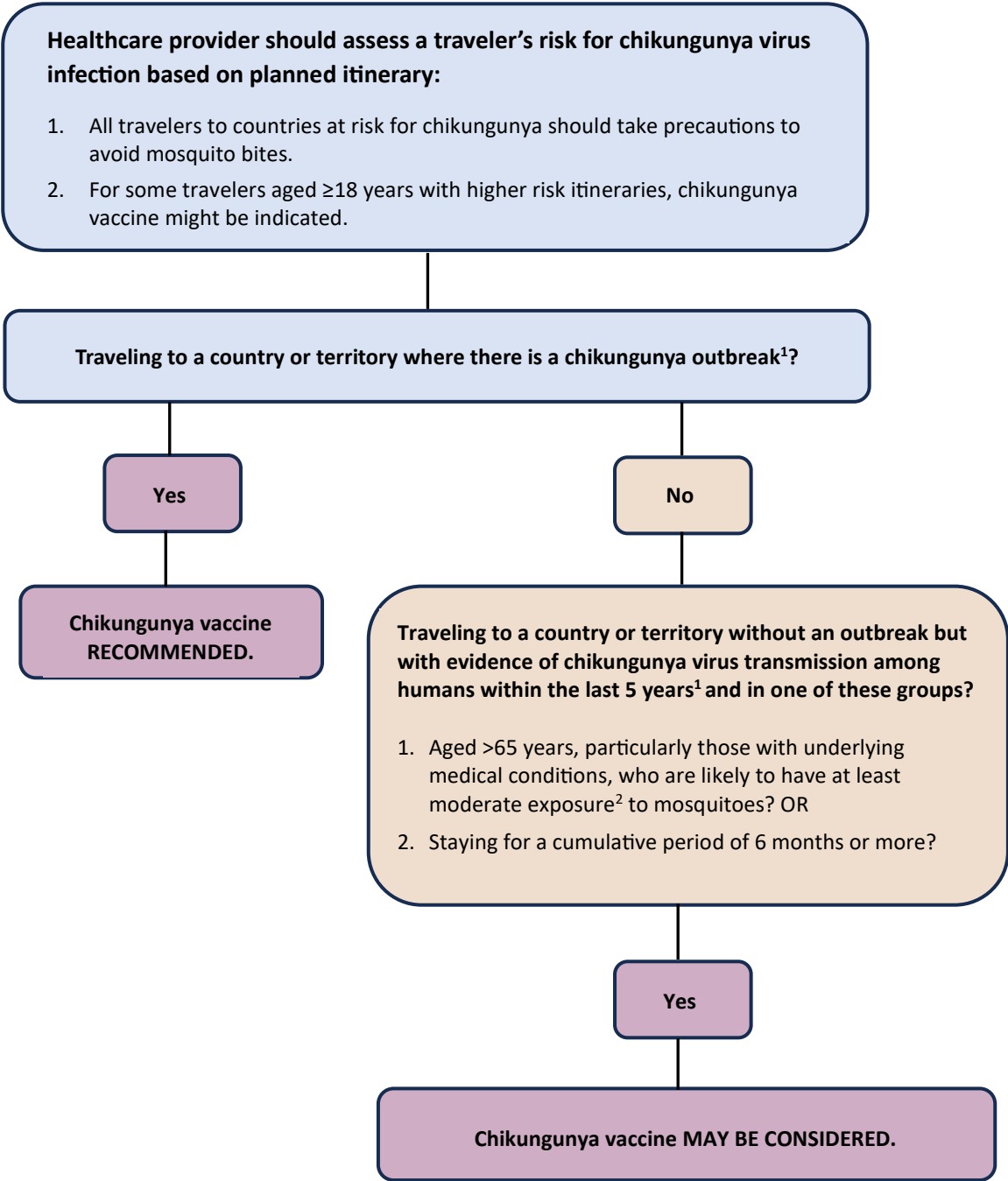


Chikungunya Vaccination for U.S. Travelers Decision Tree



¹CDC posts information on countries and territories with outbreaks or evidence of chikungunya virus transmission among humans during the last 5 years at <https://www.cdc.gov/chikungunya/geo/index.html>.

²Moderate exposure could include travelers who might have at least 2 weeks (cumulative) of exposure to mosquitoes in indoor or outdoor settings. It does not include travelers who might have limited exposure to mosquitoes (e.g., business travelers likely to be mainly in mosquito-protected indoor settings).

