

# Sign up for Environmental Health Training in Emergency Response (EHTER)

Form Approved  
OMB No: 0920-0956  
Exp. Date: March 31, 2016

Environmental health practitioners and others should sign up now for the **Environmental Health Training in Emergency Response (EHTER)** to learn how to respond to environmental health threats during disasters.



CDC healthcare response team providing supplies to a community.

## Take EHTER and learn:

- Disaster management
- Responder safety and health
- Food and drinking water safety in an emergency
- Shelter and building assessments in an emergency
- Wastewater and solid waste handling in an emergency
- Vector control and pest management in an emergency
- Radiation and environmental health response in an emergency

## SIGN UP NOW

To sign up, visit [http://address\\_here](http://address_here)



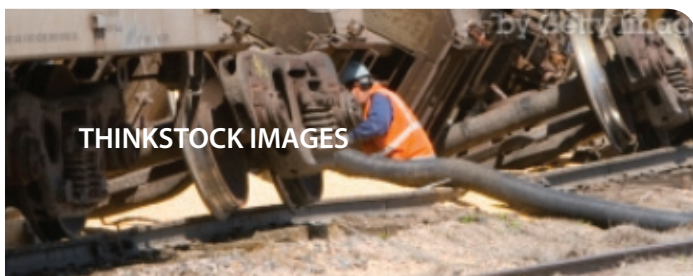
CDC healthcare response team providing clean water to a disaster area.

National Center for Environmental Health  
Division of Emergency and Environmental Health Services



## EHTER graduates respond to emergencies: Two stories

Read about two cases where EHTER graduates responded to emergencies using their new skills.



Caption dependent on event photo.

### Emergency: Train derailment in New York

Geoff Snyder, Environmental Health Director in Madison County, New York, relates how EHTER prepared him for real-world emergency responses. “I feel very fortunate to have attended the EHTER course when I did. The CSX train derailment in Madison County served as a prime example of why we need to be prepared for such emergencies,” Snyder says.

“The concepts covered during the EHTER course,” Snyder says, “were very helpful during the emergency and our subsequent response activities...we hope to secure the same training for all county environmental health staff as well as other public health staff and emergency responders.”



Caption dependent on event photo.

### Emergency: Tornado in Kansas

Just a few weeks after completing the EHTER training, some EHTER graduates in Kansas faced a challenge when an EF-5 tornado devastated Greensburg, Kansas. The tornado had winds of over 200 miles per hour. Many of the officials who responded to the disaster were EHTER-trained, which substantially aided them in responding to the crisis.

EHTER-trained responders evaluated malfunctioning septic systems and wastewater problems and protected food. They also sanitized flooded basements, rehabilitated drinking water wells, and assisted with environmental incident command operations.

## Safeguarding environmental health during emergencies

During emergencies, environmental health practitioners perform many critical functions, such as assessing shelters, testing drinking water, conducting food safety inspections, and controlling disease-causing vectors.

To be able to quickly select and execute protective actions, environmental health practitioners need additional training to handle the specific challenges that may arise during disasters.

### Additional EHTER course options are coming soon

To learn more about additional course options, visit <http://www.cdc.gov/nceh/ehs/eLearn/EHTER.htm>

CDC experts are working closely with the Federal Emergency Management Agency (FEMA), Center for Domestic Preparedness (CDP), in Anniston, Alabama, to develop several types of EHTER courses, including:

- An independent-study, online awareness level course offered through FEMA's Independent Study Program web site
- An instructor-led operations level course
- An instructor-led planning and management level course

CDC experts are working closely with the International Federation of Environmental Health to develop and deliver EHTER-based courses and workshops internationally. For more information, please visit <http://www.ifeh.org/ehdm/index.html>

## SIGN UP NOW

To sign up, visit <http://www.address>