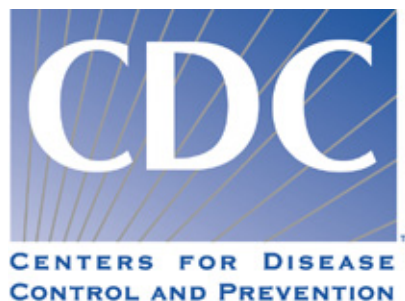




1999 BRFSS SUMMARY QUALITY CONTROL REPORT



BEHAVIORAL RISK FACTOR SURVEILLANCE SYSTEM QUALITY CONTROL DOCUMENTATION

This report provides selected statistical indicators which are monitored in the Behavioral Risk Factor Surveillance System (BRFSS) to detect changes in the quality of the data collection procedures used in states. The value of these indicators is primarily for individual states to identify changes that may occur in their data collection process over time. When the indicators are below the objectives, it is appropriate to review data collection procedures and determine whether the procedures are optimal. When there are no evident procedural deficiencies and the quality indicators are stable, not meeting an objective is not an indication of poor quality. Similarly, it is useful to look at how the indicators differ between states to assess whether data collection procedures are optimal in all states. However, quality indicators that rank lower in one state than in another do not necessarily mean the quality of the data collection effort is also lower.

Additional tables of quality control indicators include those in Section 2 comparing demographic characteristics of BRFSS sample data with that of the population for each state, and Section 3 tables showing non-response rates for selected items from the core and module sections.

RESPONSE RATES

The response rate measures the extent to which interviews were completed from among the telephone numbers selected for the sample. The higher the response rate, the lower the potential will be for bias in the data.

No definitive formula for response rate estimates exists. The three estimates that are used for BRFSS provide a combination of monitoring information that is useful for program management. The formulas for each, translated into BRFSS call disposition codes (see page 7), are as follows:

CASRO: This response rate formula, developed by the Council of American Survey Research Organizations (CASRO), apportions dispositions with unknown eligibility status (ring-no-answer and busy) to dispositions representing eligible respondents in the same proportion as exists among all calls of known status (all other BRFSS call dispositions). The resulting estimate reflects telephone sampling efficiency as well as the degree of cooperation among eligibles contacted.

$$\frac{01}{(01+02+07+09) + \frac{(01+02+07+09)}{(01+02+07+09) + (03+05+06+08+11)} \times (04 + 10)}$$

AAPOR Cooperation Rate One: This rate is the number of completes divided by the number of identified households contacted that contain a resident 18 years or older. The resulting measure reflects the cooperation of identified eligibles and is not affected by differences in telephone sampling efficiency.

$$\frac{01}{01+02+07+08+09+11}$$

Upper Bound: The most liberal of response rate formulas, the upper bound calculation includes only refusals, terminations, and completed interviews. The resulting estimate reflects the cooperation of eligibles contacted and is not affected by differences in telephone sampling efficiency.

$$\frac{01}{01+02+09}$$

Among Waksberg sampling states, the call-back rules are disregarded during wind-down interviewing (see page 3); therefore, total response rates for an interviewing period will not accurately reflect performance under the call-back rules during regular mode interviewing. The response rate estimates included in this report have been calculated using only the records dispositioned during regular mode interviewing.

OTHER IMPORTANT QUALITY CONTROL INDICATORS

Survey Efficiency: The efficiency rate used for BRFSS is the percentage of all numbers called (excluding numbers rejected during Waksberg prescreening) that resulted in completed interviews. This indicator is directly related to the percent of telephone numbers in the survey area that are assigned to households. The degree to which interviewers adhere to survey procedures and gain respondent cooperation also affects efficiency. This percentage should remain static unless there is a change in the phone companies' assignment of phone numbers in the survey area, a change in sampling design, or a substantial change in interviewer performance.

$$\frac{01}{\text{Total Telephone Numbers Used}}$$

Wind-Down: In order to terminate data collection activities within the allotted time period each month, wind-down procedures (i.e., suspension of the call-back rules) may be necessary with Waksberg sampling. Wind-down is permitted once 95% of the sample has been completed. Each interview completed in the wind-down mode should be coded as such. Generally, if the percentage of wind-down interviews is greater than five percent, the survey supervisor is going into wind-down too early. The greater the proportion of interviews completed in wind-down mode, the greater the potential for bias in the survey results.

This is because data collected during wind-down are reflective only of those respondents who are easiest to reach. Respondents who are more difficult to reach may differ significantly from those who are easier to reach.

Refused Interview: The percentage of refusals of total numbers called in a given interviewing period is an indicator of both interviewer performance and degree of potential bias in the survey data. Ten percent¹ refusals or less is a generally accepted standard.

Ring-No-Answer: The percentage of ring-no-answers reflects how many attempts are made and with what time variation on unanswered phone numbers. The objective for ring-no-answers is 10%¹ or less of total numbers called. States that exceed this percentage may not be following prescribed call-back procedures or may be using this disposition inappropriately as a final disposition for a selected respondent who was not interviewed.

Selected Respondent Not Available During the Interviewing Period: This disposition is used most often in wind-down and therefore reflects the proportion of calling done during wind-down. It also reflects the diligence of efforts to contact selected respondents whose availability is limited. The objective for this disposition is 3%¹ or less of total numbers called. Those states that exceed this percentage may need to extend the number of days they interview during the month.

Line Busy: This disposition should be infrequent. The objective is 0.3%¹ or less. A higher percentage than 0.3 may indicate that call-back procedures are not being carefully followed or that this disposition is being used inappropriately as a final disposition for a selected respondent who was not interviewed.

Variation in Cluster Size: Variation in size of clusters in Waksberg-Mitofsky designs is an indirect indicator of how the sampling design was implemented. Percentages of records with a cluster size of three are shown for states using Waksberg-Mitofsky designs.

Monitoring Capability: BRFSS protocol specifies that systematic, unobtrusive electronic monitoring be a routine and integral part of monthly survey procedures for all interviewers. Monitoring is considered a valuable tool for training and achieving uniform questionnaire administration, resulting in less bias in the data set. Monitoring of interviewers can provide quick information on features of the respondent recruitment and questioning process that needs improvement. Monitoring capability information is shown for all states as of December 1999.

OTHER DATA QUALITY MEASURES

BRFSS is developing a quality profile, which is a compendia of all known information about the quality of the data, including aspects of sampling error, coverage, nonresponse, and other

¹This percentage is affected by the efficiency of the sampling methodology (i.e., by the number of nonworking and nonresidential dispositions in the denominator). Comparisons between survey areas with different sampling methods may not be meaningful. Within a survey area, month-to-month and year-to-year changes are important to monitor.

indicators of quality. Tables in Section 2 present information on the discrepancy between sample data and population estimates for gender, race, and age. In these tables, the sample data percentage is based upon data weighted by the variable WT1, composed of number of telephones, size of household, and geographic and density stratification. The rationale for using the weighted data is that the factors which go into it are deliberate features of the sample design. Thus, any differences between the raw and WT1 percentages are not considered as bias.

Respondent Sex Distribution: Survey samples with a respondent sex distribution that differs substantially from the population distribution in the survey area may produce biased estimates of risk factor prevalences. A distribution substantially skewed toward females relative to the population surveyed (after adjusting for probability of selection due to number of telephone and number of adults in households) suggests that interviewers may not be interviewing randomly selected respondents.

Respondent Age Distribution: The discrepancy between the percentage in specific age groups in the sample and the corresponding percentage in the population is an indicator of the age bias of the sample. An age distribution that differs substantially from the population distribution in the survey area may produce biased estimates of risk factor prevalences, particularly since many characteristics of individuals are substantially affected by age. For example, younger persons tend to be healthier than those who are older. Such a discrepancy also suggests that interviewers may not be interviewing randomly selected respondents.

Respondent Race Distribution: Survey samples with a respondent race distribution that differs substantially from the population distribution in the survey area may produce biased estimates of risk factor prevalences. The discrepancy between the percentage White or Black in the sample and the percentage White or Black in the population is an indicator of racial bias of the sample. The percentage White in the sample is, however, affected by large interstate differences in the protocol for coding the race of Hispanics. These differences in protocol significantly affect the percentage White in states with large Hispanic populations and can introduce substantial bias in the race-specific risk factor prevalences for these areas.

Item Nonresponse: Item non-response rates from completed interviews for selected items from the core questions have been calculated by state, and are shown in Section 3. The assumption is that these measures are an indication of overall interviewing and/or coding quality. The percentages shown are based upon the number of responses coded as missing or refused. On the questionnaire, the code 9 is generally listed as refused, but this code may capture some responses that were supposed to be answered, but for some reason were not, and appeared as a blank or other missing value symbol. These cases have been coded as 9 in order to meet the constraints of processing CATI and editing programs. It is important to note that any survey will have natural variation over sample sites; therefore, some variation between states is to be expected. In evaluating possible measurement error stemming from variation in item missing data rates across states, the goal is to identify outliers in the distribution of the indicators.

BRFSS CALL DISPOSITION CODES

- 01** Completed interview
- 02** Refused interview
- 03** Nonworking number
- 04** Ring-no-answer
- 05** Not a private residence
- 06** No eligible respondent at this number
- 07** Selected respondent not available during the interviewing period
- 08** Language barrier
- 09** Interview terminated within questionnaire
- 10** Line Busy
- 11** Respondent unable to communicate due to physical or mental impairment

Interpretation of Summary Statistics

The tables in sections 2 and 3 contain summary statistics useful in assessing data quality. Some of the tables in Section 3 contain Z-scores. Z-scores indicate how many standard deviations values are from the mean, and are one way of assessing the location of a case in a distribution. Standardization permits comparison of the scores from different distributions (e.g. states). Observations below the mean have a negative z-score. As a general guide, z-scores falling outside the -2.0 to 2.0 range can be considered extreme values, and indicate possible problems in the item.

STATUS OF MONITORING SYSTEMS 1999

December 1999

STATE	AUDIO (Y/N)	CATI DISPLAY(Y/N)	COMMENTS
AL	Y	N	
AK	Y	Y	
AZ	Y	N	
AR	Y	Y	
CA	Y	Y	
CO	Y	Y	
CT	Y	Y	
DE	Y	Y	
DC	N	N	
FL	Y	N	
GA	Y	Y	
HI	Y	N	
ID	Y	Y	
IL	Y	Y	
IN	Y	Y	
IA	Y	Y	
KS	Y	Y	
KY	Y	N	
LA	Y	Y	
ME	N	Y	
MD	Y	Y	
MA	Y	Y	
MI	Y	Y	
MN	Y	N	
MS	Y	Y	
MO	Y	Y	
MT	Y	N	
NE	Y	Y	
NV	Y	Y	
NH	Y	Y	
NJ	Y	Y	
NM	Y	Y	
NY	Y	Y	
NC	Y	N	
ND	Y	Y	
OH	Y	Y	
OK	N	N	
OR	Y	Y	
PA	Y	Y	
PR	N	N	
RI	Y	Y	
SC	Y	Y	
SD	N	N	
TN	N	N	
TX	Y	Y	
UT	Y	Y	
VT	Y	Y	
VA	Y	Y	
WA	Y	Y	
WV	N	N	
WI	Y	Y	
WY	Y	Y	
TOTALS	45 with audio, 37 with audio and video		

BRFSS Call Dispositions

Frequency Distribution by State, 1999

State	1		2		3		4		5		6		7		8		9		10		11		Total
	No	%	No	%	No	%	No	%	No	%	No	%	No	%	No	%	No	%	No	%	No	No	
AK	2051	7.3%	854	3.1%	18968	67.8%	1427	5.1%	2655	9.5%	63	0.2%	297	1.1%	53	0.2%	2	0.0%	1580	5.6%	34	0.1%	27,984
AL	2097	16.8%	897	7.2%	5902	47.2%	533	4.3%	1919	15.4%	48	0.4%	659	5.3%	17	0.1%	48	0.4%	251	2.0%	126	1.0%	12,497
AR	2997	13.1%	2483	10.9%	12113	52.9%	1120	4.9%	3239	14.2%	50	0.2%	460	2.0%	46	0.2%	118	0.5%	112	0.5%	146	0.6%	22,884
AZ	1744	10.1%	89	0.5%	8949	52.0%	2431	14.1%	2317	13.5%	53	0.3%	1245	7.2%	56	0.3%	0	0.0%	282	1.6%	34	0.2%	17,200
CA	4304	21.2%	669	3.3%	4708	23.2%	3190	15.7%	4152	20.5%	1719	8.5%	975	4.8%	167	0.8%	276	1.4%	55	0.3%	61	0.3%	20,276
CO	3053	15.7%	897	4.6%	9765	50.1%	585	3.0%	4266	21.9%	171	0.9%	571	2.9%	34	0.2%	3	0.0%	33	0.2%	118	0.6%	19,496
CT	3517	17.3%	2406	11.8%	8637	42.5%	1979	9.7%	3051	15.0%	25	0.1%	426	2.1%	187	0.9%	49	0.2%	5	0.0%	53	0.3%	20,335
DC	1267	7.1%	504	2.8%	8509	47.6%	2611	14.6%	4282	23.9%	24	0.1%	479	2.7%	96	0.5%	4	0.0%	69	0.4%	46	0.3%	17,891
DE	2561	13.9%	1417	7.7%	9204	49.9%	1944	10.5%	2694	14.6%	319	1.7%	166	0.9%	50	0.3%	59	0.3%	3	0.0%	33	0.2%	18,450
FL	5177	10.5%	5744	11.6%	20222	40.8%	4422	8.9%	10119	20.4%	866	1.7%	1569	3.2%	270	0.5%	122	0.2%	432	0.9%	582	1.2%	49,525
GA	2273	13.9%	1237	7.5%	7624	46.5%	1057	6.4%	3118	19.0%	81	0.5%	526	3.2%	109	0.7%	39	0.2%	145	0.9%	187	1.1%	16,396
HI	2156	21.2%	989	9.7%	4859	47.9%	898	8.9%	139	1.4%	283	2.8%	322	3.2%	288	2.8%	33	0.3%	38	0.4%	141	1.4%	10,146
IA	3618	11.8%	890	2.9%	20052	65.2%	1249	4.1%	3209	10.4%	11	0.0%	1206	3.9%	68	0.2%	11	0.0%	29	0.1%	404	1.3%	30,747
ID	4955	16.3%	3280	10.8%	14938	49.1%	1567	5.2%	4474	14.7%	51	0.2%	576	1.9%	143	0.5%	191	0.6%	111	0.4%	117	0.4%	30,403
IL	2910	12.0%	1947	8.0%	13743	56.8%	441	1.8%	4235	17.5%	111	0.5%	509	2.1%	113	0.5%	22	0.1%	0	0.0%	164	0.7%	24,195
IN	2443	17.1%	1882	13.1%	5903	41.2%	923	6.4%	2631	18.4%	72	0.5%	240	1.7%	0	0.0%	41	0.3%	114	0.8%	70	0.5%	14,319
KS	3878	13.6%	1031	3.6%	18764	65.7%	1352	4.7%	2691	9.4%	69	0.2%	662	2.3%	42	0.1%	0	0.0%	7	0.0%	54	0.2%	28,550
KY	7543	17.3%	1992	4.6%	26478	60.7%	1037	2.4%	4191	9.6%	98	0.2%	1714	3.9%	44	0.1%	30	0.1%	29	0.1%	494	1.1%	43,650
LA	1670	15.3%	703	6.4%	5116	46.7%	702	6.4%	1928	17.6%	65	0.6%	532	4.9%	41	0.4%	21	0.2%	48	0.4%	122	1.1%	10,948
MA	5024	13.8%	4190	11.5%	14937	40.9%	4856	13.3%	5600	15.3%	50	0.1%	765	2.1%	545	1.5%	138	0.4%	287	0.8%	112	0.3%	36,504
MD	3959	16.7%	1757	7.4%	10806	45.7%	1557	6.6%	2646	11.2%	467	2.0%	1994	8.4%	122	0.5%	33	0.1%	164	0.7%	145	0.6%	23,650
ME	1673	13.9%	167	1.4%	7113	59.3%	563	4.7%	1458	12.2%	327	2.7%	576	4.8%	20	0.2%	4	0.0%	36	0.3%	63	0.5%	12,000
MI	2522	14.1%	2234	12.4%	7340	40.9%	1521	8.5%	3263	18.2%	177	1.0%	568	3.2%	64	0.4%	46	0.3%	91	0.5%	123	0.7%	17,949
MN	5340	39.1%	340	2.5%	4215	30.8%	1094	8.0%	1757	12.9%	153	1.1%	521	3.8%	76	0.6%	19	0.1%	47	0.3%	111	0.8%	13,673
MO	4277	14.2%	1922	6.4%	17896	59.4%	1261	4.2%	3632	12.0%	69	0.2%	618	2.1%	22	0.1%	89	0.3%	190	0.6%	166	0.6%	30,142
MS	2180	18.6%	749	6.4%	5812	49.7%	520	4.4%	1832	15.7%	44	0.4%	310	2.6%	15	0.1%	35	0.3%	37	0.3%	166	1.4%	11,700
MT	1798	15.2%	353	3.0%	7535	63.6%	437	3.7%	1346	11.4%	51	0.4%	198	1.7%	7	0.1%	10	0.1%	29	0.2%	84	0.7%	11,848
NC	2445	18.5%	806	6.1%	6064	45.9%	854	6.5%	2218	16.8%	69	0.5%	481	3.6%	47	0.4%	10	0.1%	161	1.2%	44	0.3%	13,199
ND	1981	13.3%	334	2.2%	10619	71.4%	513	3.4%	1128	7.6%	36	0.2%	206	1.4%	10	0.1%	4	0.0%	17	0.1%	31	0.2%	14,879
NE	2824	10.9%	801	3.1%	16495	63.7%	1776	6.9%	3046	11.8%	48	0.2%	428	1.7%	79	0.3%	4	0.0%	304	1.2%	94	0.4%	25,899
NH	1248	11.7%	865	8.1%	5936	55.5%	614	5.7%	1229	11.5%	87	0.8%	294	2.7%	12	0.1%	28	0.3%	337	3.1%	50	0.5%	10,700
NJ	2822	11.6%	2280	9.4%	10238	42.0%	3753	15.4%	4175	17.1%	75	0.3%	562	2.3%	248	1.0%	65	0.3%	83	0.3%	50	0.2%	24,351
NM	3488	17.6%	1109	5.6%	9868	49.9%	1228	6.2%	3118	15.8%	93	0.5%	545	2.8%	13	0.1%	62	0.3%	150	0.8%	113	0.6%	19,787
NV	2187	16.6%	646	4.9%	5224	39.7%	1749	13.3%	2453	18.6%	144	1.1%	203	1.5%	203	1.5%	0	0.0%	169	1.3%	176	1.3%	13,154
NY	2650	13.8%	2109	11.0%	8163	42.7%	2080	10.9%	3160	16.5%	19	0.1%	412	2.2%	399	2.1%	71	0.4%	24	0.1%	49	0.3%	19,136
OH	1638	13.8%	746	6.3%	5438	45.9%	1009	8.5%	2112	17.8%	17	0.1%	616	5.2%	22	0.2%	24	0.2%	163	1.4%	65	0.5%	11,850
OK	2968	14.4%	1549	7.5%	12308	59.6%	1205	5.8%	2090	10.1%	148	0.7%	250	1.2%	10	0.0%	22	0.1%	57	0.3%	35	0.2%	20,642
OR	1808	11.6%	1878	12.1%	7453	48.0%	853	5.5%	2994	19.3%	20	0.1%	291	1.9%	32	0.2%	78	0.5%	75	0.5%	61	0.4%	15,543
PA	3559	15.7%	2464	10.9%	10149	44.9%	2318	10.3%	3311	14.7%	19	0.1%	458	2.0%	85	0.4%	54	0.2%	111	0.5%	72	0.3%	22,600
PR	3052	24.8%	259	2.1%	5153	41.9%	1169	9.5%	1763	14.3%	12	0.1%	633	5.1%	22	0.2%	1	0.0%	75	0.6%	172	1.4%	12,311
RI	4003	19.5%	2953	14.4%	7432	36.2%	2182	10.6%	2990	14.6%	27	0.1%	473	2.3%	235	1.1%	95	0.5%	51	0.2%	95	0.5%	20,536
SC	3468	15.0%	2269	9.8%	11286	48.7%	2055	8.9%	3224	13.9%	25	0.1%	513	2.2%	36	0.2%	100	0.4%	75	0.3%	118	0.5%	23,169
SD	4151	12.8%	1127	3.5%	23014	71.1%	853	2.6%	2584	8.0%	52	0.2%	380	1.2%	28	0.1%	19	0.1%	83	0.3%	79	0.2%	32,370
TN	3015	28.1%	1343	12.5%	2937	27.3%	1828	17.0%	1236	11.5%	42	0.4%	128	1.2%	21	0.2%	7	0.1%	91	0.8%	96	0.9%	10,744
TX	4990	11.6%	5929	13.8%	18955	44.2%	3046	7.1%	7544	17.6%	90	0.2%	1485	3.5%	91	0.2%	305	0.7%	246	0.6%	205	0.5%	42,886
UT	3195	15.3%	616	3.0%	12054	57.9%	1059	5.1%	2131	10.2%	50	0.2%	574	2.8%	84	0.4%	14	0.1%	974	4.7%	67	0.3%	20,818
VA	3502	18.9%	1765	9.5%	7326	39.4%	1109	6.0%	3092	16.6%	100	0.5%	837	4.5%	227	1.2%	1	0.0%	404	2.2%	214	1.2%	18,577
VT	3163	11.9%	1072	4.0%	18027	68.1%	1460	5.5%	2230	8.4%	42	0.2%	327	1.2%	16	0.1%	48	0.2%	22	0.1%	65	0.2%	26,472
WA	3608	18.9%	2168	11.4%	6549	34.3%	1517	8.0%	3469	18.2%	356	1.9%	566	3.0%	194	1.0%	104	0.5%	423	2.2%	114	0.6%	19,068
WI	2177	19.1%	1098	9.6%	5143	45.2%	548	4.8%	2024	17.8%	112	1.0%	125	1.1%	0	0.0%	33	0.3%	57	0.5%	68	0.6%	11,385
WV	2589	23.2%	796	7.1%	5187	46.5%	571	5.1%	1428	12.8%	29	0.3%	349	3.1%	1	0.0%	12	0.1%	60	0.5%	128	1.1%	11,150
WY	2403	18.4%	1186	9.1%	6074	46.5%	733	5.6%	2147	16.4%	36	0.3%	282	2.2%	20	0.2%	55	0.4%	61	0.5%	66	0.5%	13,063
Cum	159921		79791		537200		77359		153740		7265		30102		4830		2659		8497		6283		1,067,647
Med	2939		1118		8573		1216.5		2692.5		64		511		48.5		33		79		95.5		19,102

BRFSS UPPER BOUND RESPONSE RATE ESTIMATES*
BY STATE, 1995-1999

State	1995 Rate	1996 Rate	1997 Rate	1998 Rate	1999 Rate
AK	80.0	75.3	74.4	68.2	70.6
AL	79.9	80.6	75.2	69.4	68.9
AR	76.0	73.1	78.7	74.5	53.5
AZ	73.6	81.9	92.6	95.4	95.1
CA	70.3	66.9	64.6	83.0	82.0
CO	86.1	83.2	76.2	79.2	77.2
CT	78.9	77.7	74.5	65.5	58.9
DC		82.1	82.1	76.9	71.4
DE	89.8	85.1	80.2	73.2	63.4
FL	77.1	70.0	64.7	45.4	46.9
GA	83.4	93.5	86.7	60.6	64.0
HI	82.2		74.8	73.3	67.8
IA	86.9	85.7	86.9	84.0	80.1
ID	76.0	69.8	69.8	68.0	58.8
IL	73.2	54.1	64.0	62.1	59.6
IN	86.5	82.5	74.3	57.7	56.0
KS	89.9	92.5	92.2	88.3	79.0
KY	87.1	84.1	86.6	80.6	78.9
LA	77.4	74.6	77.1	76.7	69.8
MA	69.1	68.2	67.0	59.0	53.7
MD	75.7	60.1	65.4	74.6	68.9
ME	83.8	78.2	82.7	87.3	90.7
MI	80.1	63.6	62.3	59.4	52.5
MN	92.9	89.0	92.1	92.8	93.7
MO	68.6	68.6	81.6	73.4	68.0
MS	85.3	81.2	79.5	71.8	73.5
MT	88.7	88.6	86.2	86.6	83.2
NC	86.8	81.8	78.2	76.2	75.0
ND	95.0	94.4	92.4	88.6	85.4
NE	80.4	83.7	77.6	78.6	77.8
NH	78.7	77.3	73.9	74.0	58.3
NJ	86.7	76.5	73.9	61.9	54.6
NM	60.5	69.5	76.2	75.6	74.9
NV	90.4	87.1	86.1	79.1	77.2
NY	72.4	62.3	67.1	62.2	54.9
OH	81.4	83.2	76.8	69.4	68.0
OK	79.2	78.5	79.0	70.0	65.4
OR	67.9	67.1	64.1	53.7	48.0
PA	69.0	78.0	73.4	63.6	58.6
PR				89.4	92.1
RI	76.9	70.6	70.6	63.7	56.8
SC	83.9	75.9	85.6	68.6	59.4
SD	89.0	86.1	80.1	79.6	78.4
TN	79.7	75.0	72.2	66.8	70.5
TX	75.6	74.0	67.3	50.5	44.5
UT	87.4	88.3	87.0	84.1	83.5
VA	75.9	76.4	75.8	73.6	66.5
VT	89.3	87.4	86.8	79.6	73.9
WA	72.0	66.4	65.6	60.6	61.4
WI	74.5	72.5	73.2	71.8	65.8
WV	85.0	81.2	78.2	76.9	76.2
WY	79.5	77.9	74.9	71.1	65.9
MEDIAN	80.0	78.0	76.2	73.4	68.4
MAX	95.0	94.4	92.6	95.4	95.1
MIN	60.5	54.1	62.3	45.4	44.5

*Excluding wind-down records

Revised: 6/28/00

BRFSS AAPOR COOPERATION RATE ONE*
BY STATE, 1995-1999

State	1995 Rate	1996 Rate	1997 Rate	1998 Rate	1999 Rate
AK	64.5	63.0	60.2	58.6	62.3
AL	74.4	71.1	61.9	55.2	54.6
AR	65.7	63.2	67.7	69.6	48.0
AZ	65.7	75.0	83.6	68.2	55.1
CA	57.7	55.3	51.1	65.6	66.7
CO	76.5	75.1	67.8	65.9	65.3
CT	67.5	64.1	62.9	62.5	53.0
DC		61.9	66.2	60.6	52.9
DE	77.6	74.0	70.4	66.7	59.8
FL	55.0	58.9	51.8	38.3	38.5
GA	81.3	91.4	80.7	52.9	52.0
HI	50.9		52.4	57.6	54.9
IA	75.4	76.5	70.0	64.4	58.4
ID	71.0	62.0	60.1	60.2	53.5
IL	56.7	46.1	46.8	52.4	51.4
IN	79.2	73.7	63.2	55.0	52.2
KS	81.3	85.0	85.3	77.7	68.4
KY	71.5	66.4	70.9	64.7	63.8
LA	70.6	65.5	66.2	63.5	54.1
MA	62.7	59.2	53.4	55.1	46.6
MD	66.3	55.1	62.2	56.3	49.4
ME	71.1	67.8	65.9	68.0	66.8
MI	57.8	55.8	50.5	49.1	45.4
MN	82.3	81.3	83.8	83.6	83.9
MO	61.3	60.5	55.9	59.5	60.3
MS	73.0	71.5	69.3	64.3	63.1
MT	76.8	76.5	74.3	75.0	73.4
NC	71.4	71.1	66.4	65.2	63.8
ND	83.3	86.3	82.5	80.2	77.2
NE	71.4	74.1	65.8	66.8	66.8
NH	64.5	63.9	56.0	51.5	50.0
NJ	84.6	57.7	55.5	57.9	46.8
NM	55.5	65.0	67.8	67.2	65.4
NV	79.8	78.0	72.1	59.9	64.0
NY	53.1	47.4	50.0	56.3	46.6
OH	71.0	75.1	61.7	55.4	52.7
OK	73.8	72.2	72.1	65.4	61.4
OR	56.1	56.5	54.4	46.5	43.6
PA	66.5	65.5	62.3	61.8	53.2
PR				80.9	73.7
RI	69.9	61.4	57.2	59.8	51.0
SC	79.9	71.6	73.2	66.6	53.3
SD	82.3	79.4	73.0	73.3	71.8
TN	73.6	68.6	65.2	62.5	67.1
TX	63.7	61.5	56.6	42.9	38.4
UT	76.4	80.8	74.1	71.4	70.2
VA	62.5	59.9	59.0	60.2	53.5
VT	81.0	76.2	75.7	77.4	67.4
WA	63.1	55.3	54.2	50.1	53.4
WI	72.4	69.8	70.5	68.8	62.2
WV	77.3	72.4	66.0	65.4	66.8
WY	71.7	70.5	65.5	64.2	59.9
MEDIAN	71.3	68.2	65.8	63.0	56.7
MAX	84.6	91.4	85.3	83.6	83.9
MIN	50.9	46.1	46.8	38.3	38.4

*Excluding wind-down records

Revised: 6/28/00

BRFSS CASRO RESPONSE RATE ESTIMATES*
BY STATE, 1995-1999

State	1995 Rate	1996 Rate	1997 Rate	1998 Rate	1999 Rate
AK	68.4	62.9	59.5	50.1	57.1
AL	68.3	69.1	59.6	53.5	53.1
AR	65.7	62.5	65.9	65.0	46.8
AZ	65.1	67.1	72.5	59.6	47.7
CA	52.3	47.9	48.2	57.2	58.1
CO	77.4	74.4	62.5	66.2	65.3
CT	65.1	60.4	60.7	56.6	49.6
DC		64.1	67.8	60.9	47.8
DE	68.3	63.5	59.8	60.9	54.5
FL	54.6	55.8	49.4	32.5	37.0
GA	77.6	87.1	76.8	49.0	51.7
HI	48.6		41.3	55.2	55.9
IA	73.3	74.9	69.4	66.2	60.6
ID	66.8	59.6	59.0	59.4	52.0
IL	61.6	45.6	44.2	53.6	53.0
IN	78.9	73.2	62.8	52.4	49.2
KS	73.6	77.5	75.1	75.1	66.3
KY	72.6	65.5	69.6	64.9	65.2
LA	67.3	62.7	63.8	54.8	53.2
MA	60.4	56.6	50.4	49.8	42.7
MD	60.9	54.6	54.9	54.4	47.4
ME	70.2	66.0	66.1	66.9	65.7
MI	56.0	54.6	49.6	48.1	42.7
MN	78.1	73.6	77.9	75.7	80.8
MO	59.1	59.5	54.2	52.0	59.0
MS	75.4	71.3	67.4	61.6	63.4
MT	77.5	76.5	72.6	68.9	73.2
NC	69.2	59.3	64.4	61.7	60.3
ND	84.5	85.6	79.3	73.4	75.7
NE	67.5	68.0	61.6	56.9	64.0
NH	59.5	59.3	51.4	42.5	46.7
NJ	66.9	52.4	51.0	50.7	41.5
NM	52.5	61.2	62.5	65.1	62.4
NV	77.4	75.9	71.8	59.9	61.5
NY	60.2	50.6	51.6	52.2	45.0
OH	69.5	74.4	61.7	51.9	48.8
OK	76.2	72.8	72.3	60.7	58.2
OR	56.9	55.4	53.1	45.6	41.9
PA	64.1	61.8	58.2	56.4	48.6
PR			88.9	76.7	69.5
RI	68.7	59.4	54.7	55.5	47.4
SC	74.5	60.9	58.8	59.2	49.6
SD	81.2	76.8	70.0	65.0	71.0
TN	68.7	62.5	60.1	50.1	60.1
TX	60.2	52.8	45.7	41.2	36.2
UT	78.5	77.6	71.9	61.8	65.5
VA	62.3	61.2	59.6	60.2	52.7
VT	74.5	71.6	71.5	73.2	64.8
WA	61.4	53.7	52.3	49.3	50.3
WI	71.9	69.6	69.7	67.0	60.0
WV	77.5	71.8	65.9	58.9	65.2
WY	69.2	67.7	63.4	62.1	57.5
MEDIAN	68.4	63.2	61.7	59.1	55.2
MAX	84.5	87.1	79.3	76.7	80.8
MIN	48.6	45.6	41.3	32.5	36.2

*Excluding wind-down records

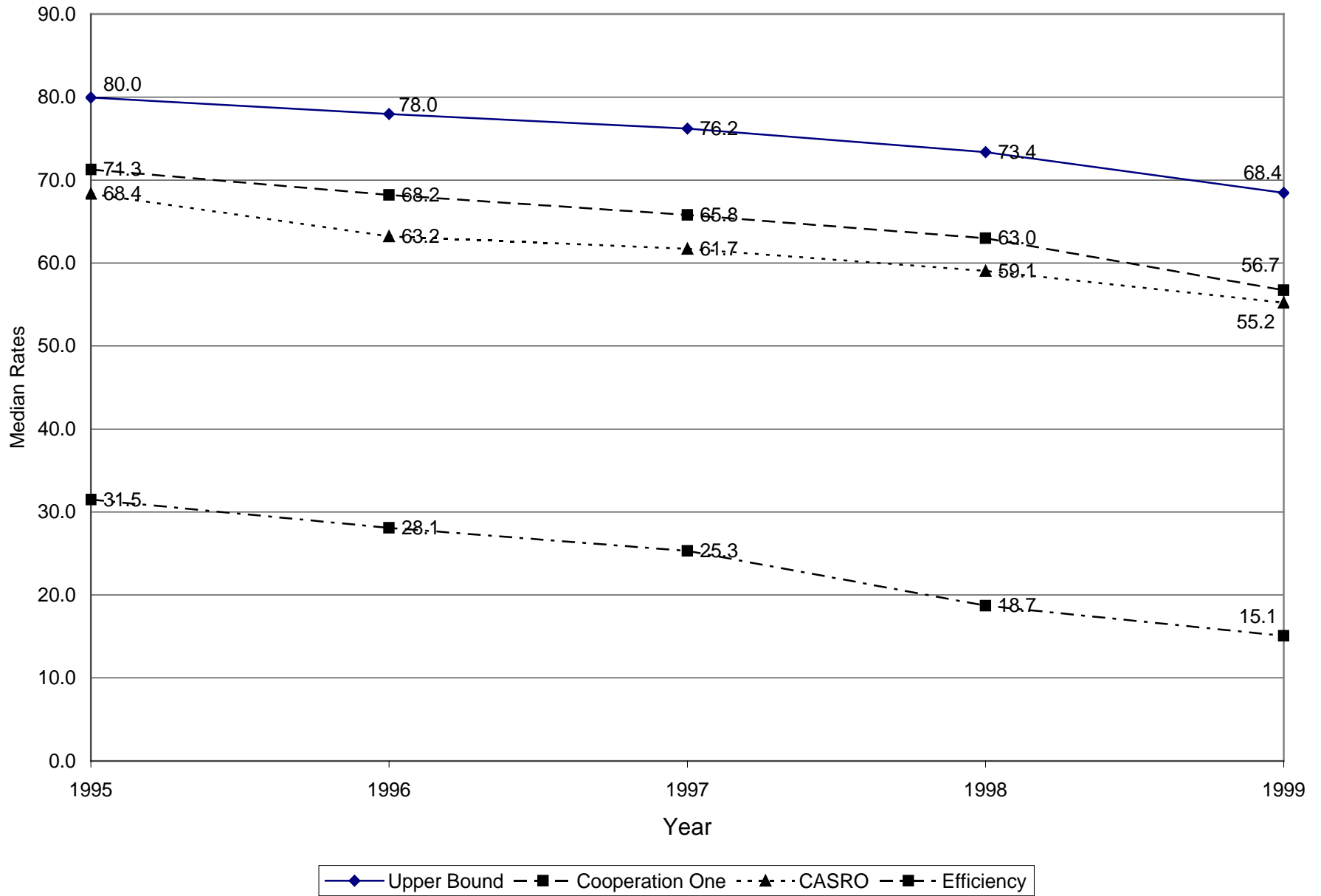
Revised: 6/28/00

**BRFSS EFFICIENCY RATES
BY STATE, 1995-1999**

State	1995 Rate	1996 Rate	1997 Rate	1998 Rate	1999 Rate
AK	22.4	23.7	23.3	13.6	7.3
AL	40.6	37.0	28.8	18.6	16.8
AR	35.6	19.8	20.0	15.8	13.1
AZ	31.5	32.2	32.1	14.8	10.1
CA	31.5	33.6	30.5	19.9	21.2
CO	29.0	28.6	29.3	18.1	15.7
CT	26.3	20.1	20.2	17.9	17.3
DC		19.1	22.6	9.2	7.1
DE	38.8	34.0	29.5	18.0	13.9
FL	30.3	26.3	23.5	14.8	10.5
GA	38.2	46.3	40.5	18.5	13.9
HI	17.9		32.4	40.6	21.2
IA	41.1	40.0	38.8	13.8	11.8
ID	31.5	28.4	24.5	18.8	16.3
IL	23.6	21.9	21.2	20.3	12.0
IN	41.6	37.2	26.4	19.3	17.1
KS	54.3	59.7	59.7	16.3	13.6
KY	35.4	29.0	33.1	23.6	17.3
LA	33.6	30.0	27.6	25.9	15.3
MA	25.1	23.3	17.4	15.8	13.8
MD	27.5	27.3	25.3	20.5	16.7
ME	35.4	33.2	32.3	15.3	13.9
MI	10.4	19.1	17.9	16.0	14.1
MN	34.5	33.4	34.7	36.8	39.1
MO	22.7	24.6	23.5	24.6	14.2
MS	42.5	35.2	35.9	23.0	18.6
MT	36.0	34.8	31.0	30.9	15.2
NC	30.7	27.8	27.7	19.5	18.5
ND	43.6	43.2	38.4	34.7	13.3
NE	19.3	17.7	19.1	26.8	10.9
NH	26.4	26.3	24.0	21.2	11.7
NJ	45.5	16.9	19.5	15.0	11.6
NM	24.9	27.0	29.3	18.9	17.6
NV	58.8	54.9	24.9	14.3	16.6
NY	24.0	21.2	22.7	15.7	13.8
OH	29.7	28.6	25.8	16.7	13.8
OK	30.0	25.6	32.4	17.3	14.4
OR	25.9	21.9	19.8	13.7	11.6
PA	32.2	20.2	22.6	19.1	15.7
PR				32.8	24.8
RI	29.6	25.9	21.9	18.1	19.5
SC	30.4	26.1	21.7	16.5	15.0
SD	39.5	37.5	33.5	31.0	12.8
TN	35.3	30.2	24.7	25.0	28.1
TX	31.0	30.4	25.5	13.7	11.6
UT	33.3	34.1	31.3	29.3	15.3
VA	33.6	18.7	20.1	20.2	18.9
VT	35.0	19.0	21.1	14.7	11.9
WA	37.9	22.8	24.4	18.5	18.9
WI	27.0	24.6	23.1	21.8	19.1
WV	42.5	41.3	35.9	33.9	23.2
WY	27.6	29.4	24.9	20.1	18.4
MEDIAN	31.5	28.1	25.3	18.7	15.1
MAX	58.8	59.7	59.7	40.6	39.1
MIN	10.4	16.9	17.4	9.2	7.1

Revised: 6/28/00

BRFSS
Median Upper Bound, Cooperation, CASRO, and Efficiency Rates
1995-1999



**BRFSS WINDDOWN RATES
BY STATE, 1995-1999
WAKSBERG STATES ONLY**

State	1995	1996	1997	1998	1999
MN	3.1	1.6	2.0	2.0	1.3
TN	6.7	7.7	7.1	9.5	6.6

TABLE 1: PERCENTAGE OF RECORDS WITH A CLUSTER SIZE OF THREE,
WAKSBERG STATES, 1995-1999

State	1995	1996	1997	1998	1999	MEAN
Minnesota	97.3%	93.6%	99.6%	99.9%	100.0%	98.1%
Tennessee	100.0%	99.7%	99.5%	97.3%	99.6%	99.2%

TABLE 2: DISCREPANCY IN PERCENTAGE FEMALE BETWEEN THE WEIGHTED* SAMPLE DATA AND POPULATION DATA BY STATE, 1995-1999

STATE	1995	1996	1997	1998	1999	MEAN
Tennessee	3.9	7.2	11.0	12.0	11.9	9.2
Kentucky	6.5	7.8	8.5	8.5	9.5	8.2
District of Columbia	.	5.0	7.2	6.4	9.3	7.0
Illinois	5.5	6.3	5.4	3.2	8.5	5.8
New Hampshire	4.6	4.0	7.5	6.6	8.4	6.2
Puerto Rico	.	5.4	2.5	7.1	7.9	5.7
Delaware	8.0	7.1	7.0	5.1	7.7	7.0
Connecticut	3.6	7.3	6.5	5.8	7.6	6.2
Kansas	2.1	3.9	7.1	7.9	7.5	5.7
Arizona	9.1	5.2	-0.2	5.1	7.3	5.3
New Jersey	12.6	3.3	7.5	5.1	7.2	7.1
Indiana	1.8	3.2	2.1	5.0	7.1	3.8
Rhode Island	0.5	2.2	4.7	6.5	7.0	4.2
Ohio	7.6	5.9	6.7	5.4	6.9	6.5
Texas	9.4	8.5	6.2	6.4	6.9	7.5
Georgia	3.0	3.1	3.9	8.2	6.8	5.0
North Carolina	5.5	4.7	5.8	6.5	6.7	5.8
Florida	4.8	6.1	5.3	6.4	6.7	5.8
South Dakota	3.3	3.4	2.8	2.6	6.6	3.7
Oklahoma	1.3	2.7	3.5	7.1	6.6	4.2
Louisiana	5.5	5.4	7.5	6.7	6.5	6.3
Virginia	6.7	8.7	5.5	3.6	6.5	6.2
Maryland	5.4	4.7	2.8	7.3	6.5	5.3
Iowa	4.4	4.0	4.5	6.4	6.3	5.1
Arkansas	4.5	7.7	8.2	8.0	6.3	6.9
California	2.7	5.2	4.7	5.1	6.2	4.8
New York	4.5	4.9	5.5	3.4	6.1	4.9
Nebraska	5.2	7.0	7.8	7.1	6.1	6.6
Vermont	5.0	3.2	2.6	2.5	6.1	3.9
Pennsylvania	2.0	2.8	6.0	5.8	6.0	4.5
Idaho	7.6	6.2	6.2	6.0	5.5	6.3
Oregon	4.1	5.0	4.1	6.6	5.4	5.1
Missouri	7.3	4.6	7.1	8.3	5.4	6.5
South Carolina	4.9	5.0	8.5	3.9	5.4	5.5
Michigan	6.4	4.3	3.7	5.6	5.1	5.0
Massachusetts	3.6	4.2	5.0	3.8	4.9	4.3
Mississippi	4.6	7.9	6.6	7.6	4.9	6.3
Wisconsin	1.0	2.6	2.7	2.4	4.7	2.7
Wyoming	6.2	6.5	6.4	7.1	4.5	6.1
Colorado	4.2	3.9	2.5	2.8	4.4	3.6
Alaska	6.3	6.1	4.7	9.0	4.1	6.1
Alabama	8.5	9.7	7.5	11.1	4.0	8.2
North Dakota	2.9	6.2	2.3	3.0	3.9	3.7
West Virginia	7.1	6.9	5.2	5.4	3.9	5.7
Hawaii	5.0	.	6.4	6.3	3.6	5.3
Montana	5.4	4.5	4.6	3.8	3.5	4.4
Washington	4.4	6.3	5.5	3.8	3.4	4.7
Utah	3.6	2.8	2.2	5.2	3.3	3.4
New Mexico	9.1	7.9	4.9	4.2	2.5	5.7
Maine	2.5	3.6	1.8	5.4	1.1	2.9
Minnesota	2.4	2.9	1.3	-0.3	0.7	1.4
Nevada	11.4	6.5	6.3	2.6	-2.6	4.9

*Weighted Probability of Selection (Number of Phones, Number of Adults, And Selection of Telephone Numbers by Stratum)

TABLE 3: DISCREPANCY BETWEEN WEIGHTED* SAMPLE AND POPULATION BY AGE CATEGORY AND STATE, 1999

STATE	PERCENTAGE POINT DIFFERENCE					
	18-24	25-34	35-44	45-54	55-64	65+
Alabama	-1.7	-0.8	-1.7	2.0	2.2	0.0
Alaska	-2.3	0.4	3.6	2.4	-1.0	-3.1
Arizona	0.4	-1.0	-4.5	1.1	1.7	2.3
Arkansas	-2.2	0.6	0.7	4.0	1.6	-4.7
California	0.8	1.6	1.4	-0.6	-0.5	-2.8
Colorado	-0.2	1.5	-0.3	1.2	0.0	-2.2
Connecticut	-2.5	3.1	2.3	1.1	-1.2	-2.9
Delaware	-0.3	0.8	0.4	1.0	1.3	-3.1
District of Columbia	-1.4	2.4	-3.5	-1.9	1.0	3.4
Florida	-0.2	1.0	0.0	0.7	0.7	-2.3
Georgia	-3.7	0.1	3.2	1.6	0.7	-1.9
Hawaii	-2.4	0.4	2.2	3.3	-1.7	-1.8
Idaho	0.3	1.9	1.4	0.1	-0.2	-3.5
Illinois	0.1	2.8	3.4	-0.2	-1.8	-4.3
Indiana	-4.9	-0.6	3.8	4.1	0.5	-2.8
Iowa	-2.7	0.1	1.0	1.6	0.5	-0.5
Kansas	-2.1	-0.1	-0.5	1.5	0.8	0.4
Kentucky	-2.8	-1.0	0.4	1.1	1.7	0.6
Louisiana	-0.7	0.3	0.1	0.7	-0.2	-0.2
Maine	-3.8	-2.9	2.7	2.4	1.8	-0.2
Maryland	1.6	0.1	0.4	0.6	-0.6	-2.1
Massachusetts	-2.5	1.5	2.2	1.1	0.1	-2.4
Michigan	-0.3	0.3	1.1	0.2	-0.1	-1.2
Minnesota	-0.6	-1.1	4.7	-0.3	0.3	-3.0
Mississippi	-2.7	-1.4	1.9	2.6	2.6	-2.8
Missouri	-2.2	-0.7	2.4	-0.4	2.1	-1.3
Montana	-1.2	-3.7	1.5	2.4	1.5	-0.6
Nebraska	-0.4	-0.5	-2.3	0.0	0.6	2.7
Nevada	0.6	3.4	-1.0	2.1	-2.0	-3.0
New Hampshire	-5.1	0.2	3.1	1.4	0.5	-0.1
New Jersey	-2.0	1.6	1.0	-0.1	0.4	-0.8
New Mexico	-0.7	-2.4	-0.5	2.0	1.5	0.0
New York	-0.5	2.7	1.5	0.4	0.2	-4.3
North Carolina	-3.4	0.4	-1.4	2.3	0.7	1.4
North Dakota	-1.1	-0.7	-0.6	0.7	0.9	0.9
Ohio	-3.1	-0.6	-1.4	0.6	1.8	2.7
Oklahoma	-2.4	0.1	-0.1	0.3	1.5	0.6
Oregon	1.2	2.7	-2.6	1.6	-0.6	-2.3
Pennsylvania	-1.8	0.5	4.1	1.2	-0.9	-3.0
Puerto Rico	-5.5	-5.0	-0.3	2.7	3.2	4.9
Rhode Island	-1.7	1.3	1.7	2.4	-0.6	-3.1
South Carolina	-2.6	1.0	1.4	3.0	0.6	-3.5
South Dakota	-2.7	-1.3	3.0	1.8	0.6	-1.5
Tennessee	-1.5	1.0	0.9	0.6	0.3	-1.3
Texas	0.2	0.9	1.7	0.8	0.1	-3.7
Utah	1.7	2.1	-1.2	0.0	-1.1	-1.5
Vermont	-4.8	0.4	2.1	2.2	0.2	-0.1
Virginia	-2.8	-1.2	1.3	3.5	1.7	-2.5
Washington	1.2	2.2	0.1	-0.7	-0.4	-2.5
West Virginia	-3.2	-1.7	0.0	4.5	1.1	-0.7
Wisconsin	-3.5	0.5	2.8	0.9	0.3	-1.0
Wyoming	0.7	-0.4	0.8	1.5	0.4	-3.0

*Weighted Probability of Selection (Number of Phones, Number of Adults And Selection of Telephone Numbers by Stratum)
 Base for Sample Percentages Is Respondents with Age Not Missing

TABLE 4: DISCREPANCY IN PERCENTAGE WHITE NON-HISPANIC BETWEEN THE WEIGHTED*
SAMPLE DATA AND POPULATION DATA BY STATE, 1999

STATE	WT1 PERCENT	POP PERCENT	DIFF PERCENT
Georgia	72.8	69.1	3.7
Virginia	77.1	74.3	2.8
Arkansas	85.3	83.2	2.1
Delaware	79.1	77.2	1.9
Utah	91.3	89.4	1.9
Pennsylvania	89.3	87.6	1.7
Mississippi	67.2	65.6	1.6
New York	68.9	67.3	1.6
California	55.4	53.8	1.6
Washington	86.8	85.2	1.6
Missouri	88.4	86.9	1.5
Ohio	88.4	86.9	1.5
Oklahoma	83.8	82.4	1.4
New Jersey	72.2	70.9	1.3
South Dakota	93.1	91.9	1.2
Illinois	74.9	73.8	1.1
South Carolina	71.7	70.6	1.1
Kentucky	93.0	91.9	1.1
Kansas	88.9	88.1	0.8
North Dakota	95.0	94.2	0.8
Wisconsin	92.2	91.4	0.8
Nebraska	91.7	91.0	0.7
Idaho	91.9	91.4	0.5
Florida	71.0	70.6	0.4
Texas	59.2	58.9	0.3
Louisiana	66.8	66.5	0.3
Tennessee	83.2	83.0	0.2
Michigan	82.9	82.8	0.1
Alabama	74.5	74.6	-0.1
Montana	92.7	92.8	-0.1
Iowa	95.2	95.4	-0.2
Massachusetts	86.5	86.8	-0.3
Indiana	88.9	89.3	-0.4
Minnesota	92.7	93.2	-0.5
Wyoming	91.3	91.8	-0.5
Arizona	70.9	71.8	-0.9
West Virginia	95.1	96.0	-0.9
New Mexico	50.5	51.6	-1.1
Connecticut	81.8	83.0	-1.2
Alaska	74.0	75.3	-1.3
Vermont	96.4	97.8	-1.4
Rhode Island	87.2	88.9	-1.7
New Hampshire	94.9	96.8	-1.9
North Carolina	73.6	75.7	-2.1
Colorado	78.5	80.8	-2.3
Maine	95.8	98.1	-2.3
Hawaii	28.3	30.7	-2.4
District of Columbia	29.8	32.4	-2.6
Maryland	63.6	66.3	-2.7
Oregon	86.3	89.4	-3.1
Nevada	69.6	73.8	-4.2

*Weighted Probability of Selection (Number of Phones, Number of Adults, And Selection of Telephone Numbers by Stratum).

Base for Sample Percentages Is Respondents with White, Black, Asian/Pacific Islander, or Native American/Alaska Native, for Orace and Hispanic Or Non-Hispanic for Hispanic.

TABLE 5: DISCREPANCY IN PERCENTAGE WHITE BETWEEN THE WEIGHTED* SAMPLE DATA AND POPULATION DATA BY STATE, 1997-1999

STATE	1997	1998	1999	MEAN
California	5.1	5.5	5.2	5.2
Virginia	3.0	1.0	3.8	2.6
Georgia	1.4	0.0	3.7	1.7
New Jersey	3.4	2.0	3.3	2.9
New York	2.7	3.1	3.1	3.0
Delaware	1.8	3.5	3.0	2.8
Missouri	0.0	1.1	2.9	1.3
Mississippi	2.8	4.8	2.9	3.5
Washington	1.8	2.6	2.8	2.4
Arkansas	1.1	1.7	2.7	1.8
Arizona	4.2	3.2	2.7	3.4
Oklahoma	3.3	3.5	2.6	3.1
Ohio	-1.9	1.1	2.3	0.5
South Carolina	1.3	5.4	2.3	3.0
Kansas	0.6	1.0	2.3	1.3
Illinois	3.4	2.9	2.2	2.8
South Dakota	-0.1	1.8	1.9	1.2
Massachusetts	1.9	1.4	1.8	1.7
Pennsylvania	1.2	2.2	1.8	1.7
Texas	-0.3	1.8	1.8	1.1
Florida	1.9	-0.2	1.6	1.1
Kentucky	0.3	0.7	1.5	0.8
Louisiana	3.7	5.5	1.5	3.5
North Dakota	0.8	0.6	1.3	0.9
Utah	1.8	1.3	1.1	1.4
Michigan	1.9	2.3	1.0	1.7
Wisconsin	0.8	1.2	1.0	1.0
Colorado	1.5	0.4	1.0	0.9
Tennessee	1.2	2.7	0.9	1.6
Minnesota	1.0	0.3	0.8	0.7
Rhode Island	1.8	0.3	0.8	1.0
Wyoming	0.4	1.5	0.8	0.9
Alabama	2.7	0.6	0.8	1.4
Nebraska	1.4	2.1	0.6	1.4
Montana	0.8	1.0	0.6	0.8
Oregon	0.4	1.5	0.6	0.8
Hawaii	0.4	-0.9	0.5	0.0
New Hampshire	-0.2	-0.3	0.4	0.0
Iowa	1.0	0.4	0.4	0.6
West Virginia	1.3	0.6	0.2	0.7
Idaho	-0.1	0.2	0.1	0.1
Indiana	1.1	-3.1	0.1	-0.6
Connecticut	2.2	0.6	0.1	0.9
Maine	-0.1	-0.5	-0.1	-0.2
Vermont	-1.0	0.3	-0.5	-0.4
New Mexico	0.0	-0.5	-0.6	-0.4
Alaska	2.9	2.2	-1.1	1.3
North Carolina	-0.8	2.4	-1.2	0.1
Maryland	5.1	-0.5	-1.5	1.0
Nevada	1.5	3.3	-5.0	-0.1
District of Columbia	-5.0	-6.8	-6.4	-6.0

*Weighted Probability of Selection (Number of Phones, Number of Adults, And Selection of Telephone Numbers by Stratum).

Base for Sample Percentages Is Respondents with White, Black, Asian/Pacific Islander, or Native American/Alaska Native.

TABLE 6: DISCREPANCY IN PERCENTAGE BLACK BETWEEN THE WEIGHTED* SAMPLE DATA AND POPULATION DATA BY STATE, 1997-1999

STATE	1997	1998	1999	MEAN
District of Columbia	6.8	8.5	7.2	7.5
Nevada	-0.9	-1.8	5.3	0.9
Maryland	-3.9	1.2	1.7	-0.3
North Carolina	0.7	-2.1	1.6	0.0
Alaska	-1.1	-0.7	0.3	-0.5
California	-2.4	-0.9	0.3	-1.0
Minnesota	-0.1	0.6	0.1	0.2
Vermont	0.2	-0.3	0.1	0.0
Maine	0.1	0.3	0.0	0.1
New Hampshire	-0.2	0.1	0.0	0.0
Montana	0.1	-0.1	-0.1	0.0
South Dakota	0.3	0.0	-0.1	0.1
Wyoming	0.1	-0.4	-0.2	-0.2
Idaho	-0.2	-0.2	-0.2	-0.2
North Dakota	0.1	-0.2	-0.3	-0.1
Arizona	-1.6	-0.7	-0.3	-0.9
Iowa	-0.8	-0.3	-0.3	-0.5
Utah	-0.4	-0.3	-0.4	-0.4
Oregon	-0.6	-1.1	-0.5	-0.7
Tennessee	-0.9	-2.5	-0.6	-1.3
Connecticut	-2.7	-1.0	-0.6	-1.4
New Mexico	-0.2	-0.2	-0.7	-0.3
West Virginia	-1.0	-0.5	-0.8	-0.8
Rhode Island	-1.1	-0.3	-0.8	-0.7
Indiana	-2.0	1.4	-0.8	-0.5
Colorado	-1.6	-1.1	-0.9	-1.2
Washington	-0.7	-0.9	-1.0	-0.9
Kansas	0.3	-0.6	-1.0	-0.5
Kentucky	0.1	-0.4	-1.1	-0.5
Alabama	-3.0	-0.9	-1.1	-1.7
Nebraska	-1.1	-1.4	-1.1	-1.2
Wisconsin	-1.3	-1.9	-1.2	-1.5
Hawaii	-0.3	-1.7	-1.2	-1.1
Massachusetts	-1.3	-1.7	-1.6	-1.5
Oklahoma	-1.5	-0.7	-1.6	-1.3
Louisiana	-4.2	-4.9	-1.7	-3.6
Florida	-2.1	0.7	-1.7	-1.0
Michigan	-3.0	-3.4	-1.8	-2.7
Illinois	-3.1	-2.8	-1.8	-2.6
Pennsylvania	-1.2	-1.9	-1.8	-1.6
Texas	-0.8	-2.0	-2.1	-1.6
Ohio	1.8	-1.1	-2.1	-0.5
Mississippi	-2.7	-4.5	-2.3	-3.2
Delaware	-1.7	-2.4	-2.4	-2.2
South Carolina	-1.2	-5.8	-2.5	-3.2
Missouri	-0.1	-0.8	-2.7	-1.2
Virginia	-3.4	0.1	-2.7	-2.0
Georgia	-0.8	0.9	-2.8	-0.9
New Jersey	-3.2	-2.9	-2.8	-2.9
New York	-2.1	-3.2	-3.0	-2.8
Arkansas	-2.4	-2.6	-3.9	-3.0

*Weighted Probability of Selection (Number of Phones, Number of Adults, And Selection of Telephone Numbers by Stratum)
 Base for Sample Percentages Is Respondents with White, Black, Asian/Pacific Islander, or Native American/Alaska Native

TABLE 7: DISCREPANCY IN PERCENTAGE HISPANIC BETWEEN THE WEIGHTED* SAMPLE DATA AND POPULATION DATA BY STATE, 1998-1999

STATE	1998	1999	MEAN
Hawaii	9.3	7.2	8.2
Arizona	1.7	3.4	2.5
Colorado	3.6	3.0	3.3
Oregon	1.7	2.9	2.3
California	2.1	2.9	2.5
New Mexico	2.7	2.7	2.7
Texas	2.5	2.5	2.5
New Jersey	-2.0	2.2	0.1
Maine	1.2	2.1	1.7
New Hampshire	0.7	2.1	1.4
Florida	1.3	2.1	1.7
Connecticut	-0.2	2.1	1.0
Louisiana	2.3	1.7	2.0
South Carolina	1.0	1.6	1.3
Massachusetts	-0.5	1.5	0.5
Mississippi	1.3	1.2	1.3
Oklahoma	-0.2	1.2	0.5
Minnesota	1.1	1.2	1.1
Illinois	1.0	1.1	1.0
West Virginia	1.1	1.0	1.1
Rhode Island	0.1	1.0	0.6
Montana	0.9	1.0	1.0
Michigan	0.5	0.9	0.7
Kansas	1.3	0.9	1.1
North Carolina	1.4	0.9	1.2
Alabama	2.3	0.8	1.6
Vermont	0.5	0.8	0.7
Wyoming	0.4	0.8	0.6
South Dakota	0.1	0.8	0.5
Ohio	0.4	0.8	0.6
Missouri	1.0	0.7	0.9
Delaware	-0.6	0.7	0.1
Arkansas	0.4	0.7	0.5
Maryland	0.8	0.7	0.8
New York	-3.1	0.6	-1.3
Virginia	1.6	0.6	1.1
Tennessee	0.5	0.5	0.5
Alaska	1.8	0.5	1.2
North Dakota	0.8	0.4	0.6
Kentucky	0.3	0.3	0.3
Iowa	0.5	0.2	0.3
Pennsylvania	0.4	0.1	0.3
Wisconsin	-0.3	0.0	-0.1
Washington	-0.4	-0.1	-0.2
Indiana	0.9	-0.1	0.4
Georgia	0.2	-0.3	-0.1
Nebraska	-1.2	-0.5	-0.9
Utah	-0.3	-0.9	-0.6
Idaho	-1.9	-1.2	-1.5
Nevada	-3.3	-1.7	-2.5
District of Columbia	-3.2	-3.7	-3.4

*Weighted Probability of Selection (Number of Phones, Number of Adults, And Selection of Telephone Numbers by Stratum)
 Base for Sample Percentages Is Respondents with Hispanic Origin Not Missing

TABLE 8: PERCENT OF HISPANICS CODED OTHER RACE BY STATE, 1998-1999

STATE	1998 HISPANICS RACE = OTHER PERCENT	1999 HISPANICS RACE = OTHER PERCENT	MEAN
Kansas	40.6	68.8	54.7
Arizona	54.9	66.6	60.7
Oklahoma	31.7	47.9	39.8
New Mexico	34.1	45.3	39.7
Maryland	39.6	43.5	41.6
Nevada	52.2	42.1	47.1
Delaware	10.0	40.5	25.3
Oregon	20.9	35.8	28.3
Texas	30.3	35.7	33.0
Ohio	29.1	32.3	30.7
Virginia	35.0	29.9	32.4
New York	42.1	29.8	35.9
Rhode Island	31.4	28.5	29.9
Missouri	20.0	28.3	24.1
New Jersey	36.5	27.5	32.0
North Dakota	7.1	27.3	17.2
Connecticut	39.8	27.1	33.4
Wyoming	26.2	26.1	26.2
Georgia	25.4	25.9	25.6
Idaho	16.4	25.8	21.1
Massachusetts	39.8	25.2	32.5
Nebraska	44.3	25.0	34.6
Tennessee	9.1	23.9	16.5
Hawaii	16.4	23.0	19.7
Colorado	23.3	22.8	23.0
District of Columbia	14.5	22.2	18.4
South Dakota	30.4	22.2	26.3
Michigan	32.3	21.6	27.0
Pennsylvania	29.2	20.8	25.0
Iowa	14.1	19.7	16.9
Montana	15.9	19.0	17.5
Kentucky	13.8	18.8	16.3
Alabama	10.5	17.1	13.8
South Carolina	13.1	16.1	14.6
North Carolina	18.0	13.8	15.9
Minnesota	23.8	12.2	18.0
Mississippi	12.0	11.6	11.8
Louisiana	16.0	10.7	13.3
Arkansas	3.8	10.0	6.9
Indiana	18.6	9.3	14.0
New Hampshire	14.8	7.1	11.0
West Virginia	0.0	7.0	3.5
Wisconsin	14.0	6.7	10.3
Utah	8.1	6.3	7.2
Vermont	4.4	5.8	5.1
Maine	0.0	4.8	2.4
California	5.4	4.0	4.7
Washington	6.5	3.5	5.0
Florida	3.2	2.4	2.8
Illinois	10.5	1.7	6.1
Alaska	6.3	0.0	3.2

*Base for Percentages Is Respondents with Hispanic Origin Equal to One

TABLE 9: DISCREPANCY IN PERCENTAGE OF HISPANICS CODED WHITE BETWEEN WEIGHTED*
SAMPLE DATA AND POPULATION DATA BY STATE, 1999

STATE	WT1 PERCENT	POP PERCENT	DIFF PERCENT
Rhode Island	89.2	79.0	10.2
North Dakota	93.1	85.5	7.6
North Carolina	88.0	80.7	7.3
Delaware	87.9	80.9	7.0
Mississippi	82.0	75.1	6.9
Kentucky	89.9	85.3	4.6
Massachusetts	82.6	78.8	3.8
Iowa	94.2	92.1	2.1
Washington	87.1	85.6	1.5
New York	76.5	75.1	1.4
Arizona	95.4	94.3	1.1
California	93.1	92.6	0.5
Oregon	92.1	91.8	0.3
Minnesota	82.4	83.1	-0.7
Maine	90.7	91.9	-1.2
Colorado	93.5	95.0	-1.5
Kansas	89.9	91.4	-1.5
Illinois	91.7	93.4	-1.7
Tennessee	79.8	82.1	-2.3
Texas	94.0	96.9	-2.9
Georgia	79.7	82.7	-3.0
West Virginia	89.7	92.7	-3.0
Utah	90.1	93.5	-3.4
New Hampshire	88.3	91.9	-3.6
Missouri	84.4	88.3	-3.9
Idaho	89.9	94.4	-4.5
Nebraska	86.9	91.7	-4.8
Wyoming	90.0	94.8	-4.8
New Jersey	80.1	85.8	-5.7
Nevada	84.9	90.8	-5.9
Indiana	85.3	91.8	-6.5
South Carolina	71.4	77.9	-6.5
Vermont	86.1	92.8	-6.7
Wisconsin	82.6	89.7	-7.1
Florida	85.3	93.5	-8.2
New Mexico	87.3	97.4	-10.1
Ohio	78.0	88.5	-10.5
Pennsylvania	71.1	82.7	-11.6
Connecticut	76.0	88.6	-12.6
South Dakota	62.6	75.3	-12.7
Arkansas	74.5	87.5	-13.0
Alaska	62.7	77.1	-14.4
Maryland	63.1	78.6	-15.5
Louisiana	70.4	86.5	-16.1
Virginia	69.1	85.5	-16.4
Montana	68.8	85.8	-17.0
Hawaii	19.3	38.1	-18.8
Michigan	69.2	88.6	-19.4
Alabama	62.1	82.7	-20.6
Oklahoma	60.8	82.2	-21.4
District of Columbia	51.4	78.8	-27.4

*Weighted Probability of Selection (Number of Phones, Number of Adults, And Selection of Telephone Numbers by Stratum).
Base for Sample Percentages Is Respondents with White, Black, Asian/pacific Islander, or Native American/alaska Native, for Orace
and Hispanic for Hispanic.

TABLE 10: PERCENT COMPLETED INTERVIEWS MISSING INCOME2 BY STATE, 1999

STATE	PERCENT	Z-SCORE	N
District of Columbia	26.8	2.8	340
Oklahoma	24.8	2.5	737
New Jersey	21.3	1.9	601
Arizona	21.3	1.9	371
Massachusetts	18.4	1.5	923
Connecticut	18.3	1.5	644
Pennsylvania	18.3	1.5	651
Rhode Island	17.7	1.4	710
New York	16.0	1.1	424
Kansas	15.6	1.0	604
Vermont	15.1	0.9	479
South Carolina	14.9	0.9	518
Tennessee	13.7	0.7	414
Montana	12.6	0.5	226
North Carolina	12.1	0.4	296
New Hampshire	11.6	0.4	145
Nebraska	10.4	0.2	293
South Dakota	9.7	0.0	401
Michigan	9.2	0.0	231
Kentucky	8.5	-0.1	642
Maryland	8.3	-0.2	328
Hawaii	8.2	-0.2	177
Washington	8.2	-0.2	295
Ohio	7.1	-0.4	117
Louisiana	6.9	-0.4	116
Delaware	6.9	-0.4	176
Missouri	6.8	-0.4	291
Utah	6.7	-0.4	213
Indiana	6.5	-0.5	159
Nevada	6.2	-0.5	135
Florida	6.1	-0.5	317
Illinois	6.1	-0.5	177
Wisconsin	5.8	-0.6	127
Mississippi	5.7	-0.6	125
Georgia	5.6	-0.6	128
North Dakota	5.6	-0.6	111
Virginia	5.5	-0.6	194
Maine	5.3	-0.7	88
Alabama	5.1	-0.7	106
Arkansas	4.3	-0.8	130
California	4.3	-0.8	186
Texas	4.3	-0.8	213
Oregon	4.3	-0.8	77
Iowa	4.2	-0.8	153
Colorado	4.0	-0.9	123
Minnesota	3.9	-0.9	207
New Mexico	3.7	-0.9	130
Idaho	3.6	-0.9	179
Puerto Rico	3.5	-1.0	106
Wyoming	3.2	-1.0	77
West Virginia	3.1	-1.0	80
Alaska	2.8	-1.1	57

TABLE 11: PERCENT COMPLETED INTERVIEWS MISSING AGE BY STATE, 1999

STATE	PERCENT	Z-SCORE	N
New York	1.4	2.6	37
Massachusetts	1.3	2.4	67
New Jersey	1.3	2.3	37
Indiana	1.1	1.9	28
Pennsylvania	1.1	1.8	40
Connecticut	1.1	1.7	38
Rhode Island	0.9	1.3	38
Vermont	0.8	0.9	26
Hawaii	0.8	0.8	17
North Carolina	0.8	0.8	19
South Carolina	0.8	0.7	26
Oregon	0.7	0.6	13
Tennessee	0.7	0.5	20
Nebraska	0.6	0.3	17
Louisiana	0.6	0.3	10
Alabama	0.6	0.2	12
Delaware	0.5	0.1	14
Texas	0.5	0.1	27
Missouri	0.5	0.1	23
Colorado	0.5	0.1	16
Virginia	0.5	0.0	18
Kansas	0.5	0.0	19
Georgia	0.5	0.0	11
New Hampshire	0.5	-0.1	6
Wisconsin	0.5	-0.1	10
Wyoming	0.5	-0.1	11
North Dakota	0.5	-0.1	9
Alaska	0.4	-0.2	9
Oklahoma	0.4	-0.2	13
District of Columbia	0.4	-0.3	5
South Dakota	0.4	-0.3	16
Maryland	0.4	-0.3	15
Ohio	0.4	-0.4	6
Utah	0.3	-0.4	11
Florida	0.3	-0.5	17
Arizona	0.3	-0.6	5
Michigan	0.3	-0.6	7
Mississippi	0.3	-0.6	6
Nevada	0.3	-0.6	6
Arkansas	0.3	-0.7	8
Idaho	0.2	-0.8	11
Maine	0.2	-0.9	3
Kentucky	0.2	-0.9	13
West Virginia	0.2	-1.0	4
New Mexico	0.1	-1.0	5
Illinois	0.1	-1.0	4
Puerto Rico	0.1	-1.1	4
Montana	0.1	-1.1	2
Iowa	0.1	-1.3	2
Washington	0.1	-1.3	2
California	0.0	-1.4	0
Minnesota	0.0	-1.4	0

TABLE 12: PERCENT COMPLETED INTERVIEWS MISSING EDUCA BY STATE, 1999

STATE	PERCENT	Z-SCORE	N
California	0.8	2.8	35
New York	0.8	2.5	20
New Jersey	0.7	2.0	19
Kansas	0.6	1.9	25
Massachusetts	0.6	1.5	28
North Carolina	0.5	1.3	13
Tennessee	0.5	1.3	16
Pennsylvania	0.5	1.2	18
Oklahoma	0.5	1.2	15
Delaware	0.4	0.8	11
Connecticut	0.4	0.8	15
Nebraska	0.4	0.8	12
Rhode Island	0.4	0.8	17
District of Columbia	0.4	0.6	5
South Carolina	0.4	0.5	13
Mississippi	0.4	0.5	8
Puerto Rico	0.3	0.3	10
Kentucky	0.3	0.2	24
Virginia	0.3	0.2	11
Maryland	0.3	0.2	12
Maine	0.3	0.1	5
Georgia	0.3	0.0	6
Arizona	0.2	-0.2	4
Michigan	0.2	-0.4	5
Alaska	0.2	-0.4	4
Washington	0.2	-0.4	7
West Virginia	0.2	-0.4	5
Minnesota	0.2	-0.4	10
Hawaii	0.2	-0.4	4
Wisconsin	0.2	-0.5	4
Nevada	0.2	-0.5	4
Louisiana	0.2	-0.5	3
Florida	0.2	-0.5	9
Montana	0.2	-0.5	3
New Hampshire	0.2	-0.6	2
Vermont	0.2	-0.6	5
Utah	0.2	-0.6	5
New Mexico	0.1	-0.7	5
Texas	0.1	-0.7	7
South Dakota	0.1	-0.8	5
Oregon	0.1	-0.8	2
North Dakota	0.1	-0.9	2
Missouri	0.1	-0.9	4
Iowa	0.1	-1.0	3
Indiana	0.1	-1.0	2
Idaho	0.1	-1.0	4
Illinois	0.1	-1.0	2
Colorado	0.1	-1.1	2
Ohio	0.1	-1.1	1
Alabama	0.0	-1.2	1
Wyoming	0.0	-1.2	1
Arkansas	0.0	-1.2	1

TABLE 13: PERCENT COMPLETED INTERVIEWS MISSING EMPLOY BY STATE, 1999

STATE	PERCENT	Z-SCORE	N
California	0.7	2.7	32
Massachusetts	0.7	2.5	36
New Jersey	0.7	2.3	19
New York	0.6	2.1	17
South Carolina	0.6	1.8	20
New Hampshire	0.6	1.7	7
Pennsylvania	0.5	1.6	19
North Carolina	0.5	1.1	11
Nebraska	0.4	1.0	12
Rhode Island	0.3	0.5	13
Connecticut	0.3	0.4	11
Georgia	0.3	0.4	7
Idaho	0.3	0.3	15
Louisiana	0.3	0.3	5
Kansas	0.3	0.2	11
Washington	0.3	0.2	10
Tennessee	0.3	0.1	8
Virginia	0.3	0.1	9
Maryland	0.3	0.1	10
Michigan	0.2	0.0	6
District of Columbia	0.2	0.0	3
Hawaii	0.2	0.0	5
Texas	0.2	-0.1	11
South Dakota	0.2	-0.1	9
Oklahoma	0.2	-0.2	6
Delaware	0.2	-0.2	5
Florida	0.2	-0.2	10
Alabama	0.2	-0.3	4
Vermont	0.2	-0.3	6
Mississippi	0.2	-0.3	4
Arizona	0.2	-0.4	3
Oregon	0.2	-0.4	3
Puerto Rico	0.2	-0.4	5
Kentucky	0.1	-0.5	11
Colorado	0.1	-0.6	4
Missouri	0.1	-0.7	5
North Dakota	0.1	-0.7	2
Alaska	0.1	-0.8	2
Utah	0.1	-0.8	3
Nevada	0.1	-0.8	2
Iowa	0.1	-0.8	3
Wyoming	0.1	-0.8	2
West Virginia	0.1	-0.9	2
Minnesota	0.1	-0.9	4
Arkansas	0.1	-0.9	2
Ohio	0.1	-1.0	1
New Mexico	0.1	-1.0	2
Montana	0.1	-1.0	1
Wisconsin	0.0	-1.0	1
Indiana	0.0	-1.1	1
Illinois	0.0	-1.1	1
Maine	0.0	-1.3	0

TABLE 14: PERCENT COMPLETED INTERVIEWS MISSING MARITAL BY STATE, 1999

STATE	PERCENT	Z-SCORE	N
Massachusetts	0.7	2.5	33
North Carolina	0.6	2.0	14
Michigan	0.6	1.8	14
Kansas	0.5	1.8	21
Pennsylvania	0.5	1.7	19
New York	0.5	1.7	14
Oklahoma	0.5	1.5	15
New Jersey	0.5	1.3	13
Rhode Island	0.4	1.0	17
New Hampshire	0.4	0.9	5
California	0.4	0.8	17
Vermont	0.4	0.7	12
Nevada	0.4	0.7	8
Washington	0.4	0.6	13
Nebraska	0.3	0.4	9
Connecticut	0.3	0.3	11
Louisiana	0.3	0.2	5
Tennessee	0.3	0.2	9
Colorado	0.3	0.2	9
Indiana	0.3	0.2	7
Virginia	0.3	0.2	10
Montana	0.3	0.1	5
Illinois	0.3	0.1	8
Puerto Rico	0.3	0.0	8
South Carolina	0.3	0.0	9
Alaska	0.2	-0.1	5
District of Columbia	0.2	-0.2	3
Hawaii	0.2	-0.2	5
Mississippi	0.2	-0.2	5
Oregon	0.2	-0.3	4
Maryland	0.2	-0.4	8
Delaware	0.2	-0.4	5
Utah	0.2	-0.5	6
Ohio	0.2	-0.5	3
Arizona	0.2	-0.6	3
Kentucky	0.2	-0.6	13
Idaho	0.2	-0.6	8
Texas	0.1	-0.8	7
Georgia	0.1	-0.8	3
Maine	0.1	-0.9	2
North Dakota	0.1	-1.0	2
Arkansas	0.1	-1.0	3
Florida	0.1	-1.0	5
South Dakota	0.1	-1.0	4
Minnesota	0.1	-1.1	5
Wisconsin	0.1	-1.1	2
Iowa	0.1	-1.1	3
Wyoming	0.1	-1.1	2
New Mexico	0.1	-1.3	2
Alabama	0.0	-1.3	1
West Virginia	0.0	-1.4	1
Missouri	0.0	-1.5	1

TABLE 15: PERCENT COMPLETED INTERVIEWS MISSING HISPANIC BY STATE, 1999

STATE	PERCENT	Z-SCORE	N
New Jersey	0.9	2.9	24
New York	0.8	2.8	22
New Hampshire	0.7	2.3	9
Pennsylvania	0.7	2.2	25
Massachusetts	0.6	1.8	31
Washington	0.6	1.6	21
Vermont	0.4	0.9	14
Virginia	0.4	0.9	15
Rhode Island	0.4	0.9	17
Connecticut	0.4	0.7	14
Maryland	0.4	0.5	14
Delaware	0.4	0.5	9
Idaho	0.3	0.4	16
Michigan	0.3	0.3	8
South Carolina	0.3	0.3	11
North Carolina	0.3	0.2	7
New Mexico	0.3	0.0	9
Nebraska	0.2	0.0	7
District of Columbia	0.2	-0.1	3
Kansas	0.2	-0.1	9
Colorado	0.2	-0.1	7
Nevada	0.2	-0.1	5
Oregon	0.2	-0.1	4
Florida	0.2	-0.2	11
Oklahoma	0.2	-0.2	6
Alaska	0.2	-0.3	4
Utah	0.2	-0.3	6
Maine	0.2	-0.3	3
Missouri	0.1	-0.5	6
Hawaii	0.1	-0.5	3
Mississippi	0.1	-0.5	3
Wisconsin	0.1	-0.5	3
Arkansas	0.1	-0.6	4
Georgia	0.1	-0.6	3
Indiana	0.1	-0.6	3
South Dakota	0.1	-0.6	5
Texas	0.1	-0.6	6
Kentucky	0.1	-0.6	9
Arizona	0.1	-0.7	2
Illinois	0.1	-0.7	3
North Dakota	0.1	-0.7	2
Tennessee	0.1	-0.7	3
Puerto Rico	0.1	-0.7	3
Alabama	0.1	-0.7	2
Iowa	0.1	-0.8	3
Wyoming	0.1	-0.8	2
Minnesota	0.1	-0.8	4
Ohio	0.1	-0.9	1
Louisiana	0.1	-0.9	1
Montana	0.1	-0.9	1
California	0.0	-1.2	0
West Virginia	0.0	-1.2	0

TABLE 16: PERCENT COMPLETED INTERVIEWS MISSING HEIGHT BY STATE, 1999

STATE	PERCENT	Z-SCORE	N
California	1.8	4.2	76
New York	1.0	2.0	27
New Jersey	1.0	1.8	27
Massachusetts	0.9	1.8	47
Nebraska	0.8	1.4	23
New Hampshire	0.8	1.4	10
South Carolina	0.7	1.1	25
Pennsylvania	0.7	1.1	25
North Carolina	0.7	1.0	17
Connecticut	0.6	0.7	21
Kansas	0.6	0.7	22
Rhode Island	0.6	0.6	22
Michigan	0.5	0.5	13
Maryland	0.5	0.5	20
Mississippi	0.4	0.2	9
Oklahoma	0.4	0.2	12
Delaware	0.4	0.1	10
Washington	0.4	0.1	14
Louisiana	0.4	0.0	6
Alabama	0.3	0.0	7
Iowa	0.3	-0.1	12
Vermont	0.3	-0.1	10
Tennessee	0.3	-0.1	9
Maine	0.2	-0.3	4
District of Columbia	0.2	-0.3	3
New Mexico	0.2	-0.4	8
Georgia	0.2	-0.4	5
South Dakota	0.2	-0.4	9
Kentucky	0.2	-0.5	13
Virginia	0.2	-0.5	6
Indiana	0.2	-0.6	4
Puerto Rico	0.2	-0.6	5
North Dakota	0.2	-0.6	3
Alaska	0.1	-0.6	3
Wisconsin	0.1	-0.6	3
Illinois	0.1	-0.6	4
Nevada	0.1	-0.6	3
Utah	0.1	-0.7	4
West Virginia	0.1	-0.7	3
Arizona	0.1	-0.7	2
Montana	0.1	-0.7	2
Oregon	0.1	-0.7	2
Colorado	0.1	-0.7	3
Florida	0.1	-0.8	5
Minnesota	0.1	-0.8	5
Hawaii	0.1	-0.8	2
Texas	0.1	-0.8	4
Idaho	0.1	-0.9	3
Missouri	0.0	-0.9	2
Wyoming	0.0	-0.9	1
Arkansas	0.0	-0.9	1
Ohio	0.0	-1.0	0

TABLE 17: PERCENT COMPLETED INTERVIEWS MISSING WEIGHT BY STATE, 1999

STATE	PERCENT	Z-SCORE	N
Massachusetts	4.0	2.4	201
Pennsylvania	3.8	2.1	135
South Carolina	3.7	2.0	128
New Jersey	3.7	2.0	103
Rhode Island	3.2	1.4	128
Connecticut	3.1	1.3	109
Washington	3.1	1.3	111
Oklahoma	3.1	1.3	91
New York	3.0	1.2	80
Ohio	2.7	0.9	45
Vermont	2.6	0.8	83
Tennessee	2.6	0.7	77
Nebraska	2.6	0.7	72
New Hampshire	2.5	0.6	31
North Carolina	2.5	0.6	60
Minnesota	2.4	0.5	128
Delaware	2.3	0.4	59
Kansas	2.2	0.3	85
Indiana	2.1	0.2	52
Louisiana	2.0	0.1	34
Maryland	2.0	0.1	80
Virginia	2.0	0.1	70
Maine	1.9	0.0	32
California	1.9	-0.1	82
Nevada	1.8	-0.1	40
Wisconsin	1.8	-0.2	39
South Dakota	1.8	-0.2	73
Utah	1.7	-0.3	55
Michigan	1.7	-0.3	42
Arizona	1.7	-0.3	29
Montana	1.6	-0.4	29
Arkansas	1.6	-0.4	48
Kentucky	1.6	-0.4	119
Idaho	1.6	-0.5	77
Mississippi	1.5	-0.5	33
Wyoming	1.5	-0.6	35
Illinois	1.4	-0.6	41
Missouri	1.4	-0.6	60
Georgia	1.3	-0.7	30
North Dakota	1.3	-0.7	26
Florida	1.3	-0.8	66
Texas	1.2	-0.8	62
Oregon	1.2	-0.8	22
West Virginia	1.2	-0.9	31
Iowa	1.1	-1.0	39
District of Columbia	1.0	-1.1	13
Alaska	1.0	-1.1	21
Hawaii	0.9	-1.2	20
Colorado	0.9	-1.2	27
New Mexico	0.7	-1.4	26
Alabama	0.7	-1.4	15
Puerto Rico	0.2	-2.1	5

TABLE 18: PERCENT COMPLETED INTERVIEWS MISSING ORACE BY STATE, 1999

STATE	PERCENT	Z-SCORE	N
New Jersey	1.4	2.9	39
New York	1.2	2.5	33
Wisconsin	1.1	2.2	25
Washington	1.1	1.9	39
Massachusetts	1.0	1.7	50
Pennsylvania	1.0	1.5	34
New Hampshire	0.9	1.3	11
Delaware	0.9	1.2	22
Michigan	0.8	1.2	21
Vermont	0.8	1.0	25
Indiana	0.7	0.8	18
Rhode Island	0.6	0.5	25
New Mexico	0.6	0.4	21
Connecticut	0.6	0.3	20
Virginia	0.5	0.2	19
Maryland	0.5	0.2	21
Puerto Rico	0.5	0.2	16
South Carolina	0.5	0.2	18
District of Columbia	0.5	0.0	6
California	0.5	0.0	20
Oregon	0.4	-0.1	8
Nevada	0.4	-0.2	9
Arizona	0.4	-0.2	7
Colorado	0.4	-0.2	12
Alaska	0.4	-0.3	8
Wyoming	0.4	-0.3	9
Idaho	0.4	-0.3	18
Kansas	0.4	-0.4	14
Maine	0.4	-0.4	6
Nebraska	0.4	-0.4	10
Florida	0.3	-0.4	18
Hawaii	0.3	-0.5	7
Georgia	0.3	-0.5	7
Ohio	0.3	-0.5	5
North Carolina	0.3	-0.6	7
Mississippi	0.3	-0.6	6
Oklahoma	0.3	-0.6	8
Arkansas	0.3	-0.7	8
Texas	0.3	-0.7	13
Illinois	0.2	-0.7	7
Alabama	0.2	-0.7	5
Montana	0.2	-0.8	4
Utah	0.2	-0.8	7
North Dakota	0.2	-0.9	4
Missouri	0.2	-0.9	8
Louisiana	0.2	-0.9	3
South Dakota	0.2	-1.0	7
Iowa	0.2	-1.0	6
Kentucky	0.2	-1.0	12
Tennessee	0.1	-1.1	4
Minnesota	0.1	-1.1	7
West Virginia	0.0	-1.5	0