



1997 BRFSS SUMMARY QUALITY CONTROL REPORT



BEHAVIORAL RISK FACTOR SURVEILLANCE SYSTEM QUALITY CONTROL DOCUMENTATION

This report provides selected statistical indicators which are monitored in the Behavioral Risk Factor Surveillance System (BRFSS) to detect changes in the quality of the data collection procedures used in states. The value of these indicators is primarily for individual states to identify changes that may occur in their data collection process over time. When the indicators are below the objectives, it is appropriate to review data collection procedures and determine whether the procedures are optimal. When there are no evident procedural deficiencies and the quality indicators are stable, not meeting an objective is not an indication of poor quality. Similarly, it is useful to look at how the indicators differ between states to assess whether data collection procedures are optimal in all states. However, quality indicators that rank lower in one state than in another do not necessarily mean the quality of the data collection effort is also lower.

Additional tables of quality control indicators include those in Section 2 comparing demographic characteristics of BRFSS sample data with that of the population for each state, and Section 3 tables showing non-response rates for selected items from the core and module sections.

RESPONSE RATES

The response rate measures the extent to which interviews were completed from among the telephone numbers selected for the sample. The higher the response rate, the lower the potential will be for bias in the data.

No definitive formula for response rate estimates exists. The two estimates that are used for BRFSS provide a combination of monitoring information that is useful for program management. The formulas for each, translated into BRFSS call disposition codes (see page 8), are as follows:

CASRO: This response rate formula, developed by the Council of American Survey Research Organizations (CASRO), apportions dispositions with unknown eligibility status (ring-no-answer and busy) to dispositions representing eligible respondents in the same proportion as exists among all calls of known status (all other BRFSS call dispositions). The resulting estimate reflects telephone sampling efficiency as well as the degree of cooperation among eligibles contacted.

$$(01+02+07+09) + \frac{01}{(01+02+07+09) + (03+05+06+08+11)} \times (04 + 10)$$

Upper Bound: The most liberal of response rate formulas, the upper bound calculation includes only refusals, terminations, and completed interviews. The resulting estimate reflects the cooperation of eligibles contacted and is not affected by differences in telephone sampling efficiency.

$$\frac{01}{01+02+09}$$

Because the call-back rules are disregarded during wind-down interviewing (see page 3), total response rates for an interviewing period will not accurately reflect performance under the call-back rules during regular mode interviewing. Therefore, the response rate estimates included in this report have been calculated using only the records dispositioned during regular mode interviewing.

OTHER IMPORTANT QUALITY CONTROL INDICATORS

Survey Efficiency: The efficiency rate used for BRFSS is the percentage of all numbers called (excluding numbers rejected during Waksberg prescreening) that resulted in completed interviews. This indicator is directly related to the percent of telephone numbers in the survey area that are assigned to households. The degree to which interviewers adhere to survey procedures and gain respondent cooperation also affects efficiency. This percentage should remain static unless there is a change in the phone companies' assignment of phone numbers in the survey area, a change in sampling design, or a substantial change in interviewer performance.

01

Total Telephone Numbers Used

Wind-Down: In order to terminate data collection activities within the allotted time period each month, wind-down procedures (i.e., suspension of the call-back rules) may be necessary with Waksberg sampling. Wind-down is permitted once 95% of the sample has been completed. Each interview completed in the wind-down mode should be coded as such. Generally, if the percentage of wind-down interviews is greater than five percent, the survey supervisor is going into wind-down too early. The greater the proportion of interviews completed in wind-down mode, the greater the potential for bias in the survey results. This is because data collected during wind-down are reflective only of those respondents who are easiest to reach. Respondents who are more difficult to reach may differ significantly from those who are easier to reach.

Refused Interview: The percentage of refusals of total numbers called in a given interviewing period is an indicator of both interviewer performance and degree of potential bias in the survey data. Ten percent¹ refusals or less is a generally accepted standard.

Ring-No-Answer: The percentage of ring-no-answers reflects how many attempts are made and with what time variation on unanswered phone numbers. The objective for ring-no-answers is 10%¹ or less of total numbers called. States that exceed this percentage may not be following prescribed call-back procedures or may be using this disposition inappropriately as a final disposition for a selected respondent who was not interviewed.

Selected Respondent Not Available During the Interviewing Period: This disposition is used most often in wind-down and therefore reflects the proportion of calling done during wind-down. It also reflects the diligence of efforts to contact selected respondents whose availability is limited. The objective for this disposition is 3%¹ or less of total numbers called. Those states that exceed this percentage may need to extend the number of days they interview during the month.

Line Busy: This disposition should be infrequent. The objective is 0.3%¹ or less. A higher percentage than 0.3 may indicate that call-back procedures are not being carefully followed or that this disposition is being used inappropriately as a final disposition for a selected respondent who was not interviewed.

¹Because this percentage is affected by the efficiency of the sampling methodology (i.e., by the number of nonworking and nonresidential dispositions in the denominator), comparisons between surveys with different sampling methods may not be meaningful. However, for a particular survey, month-to-month and year-to-year changes in this percentage are important to monitor.

Variation in Cluster Size: Variation in size of clusters in Waksberg-Mitofsky designs is an indirect indicator of how the sampling design was implemented. Percentages of records with a cluster size of three are shown for states using Waksberg-Mitofsky designs.

Monitoring Capability: BRFSS protocol specifies that systematic, unobtrusive electronic monitoring be a routine and integral part of monthly survey procedures for all interviewers. Monitoring is considered a valuable tool for training and achieving uniform questionnaire administration, resulting in less bias in the data set. Monitoring of interviewers can provide quick information on features of the respondent recruitment and questioning process that needs improvement. Monitoring capability information is shown for all states as of December, 1997.

OTHER DATA QUALITY MEASURES

BRFSS is developing a quality profile, which is a compendia of all known information about the quality of the data, including aspects of sampling error, coverage, nonresponse, and other indicators of quality. Tables in Section 2 present information on the discrepancy between sample data and population estimates for gender, race, and age. In these tables, the sample data percentage is based upon data weighted by the variable WT1, composed of number of telephones, size of household, and geographic and density stratification. The rationale for using the weighted data is that the factors which go into it are deliberate features of the sample design. Thus, any differences between the raw and WT1 percentages are not considered as bias.

Respondent Sex Distribution: Survey samples with a respondent sex distribution that differs substantially from the population distribution in the survey area may produce biased estimates of risk factor prevalences. A distribution substantially skewed toward females relative to the population surveyed (after adjusting for probability of selection due to number of telephone and number of adults in households) suggests that interviewers may not be interviewing randomly selected respondents.

Respondent Race Distribution: Survey samples with a respondent race distribution that differs substantially from the population distribution in the survey area may produce biased estimates of risk factor prevalences. The discrepancy between the percentage Non-white in the sample and the percentage Non-White in the population is an indicator of racial bias of the sample. The percentage Non-White in the sample is, however, affected by large interstate differences in the protocol for coding the race of Hispanics. For example, Texas and Idaho coded Hispanics as Other race unless they identified themselves as belonging to one of the standard categorical races the first time they

were asked the question. New Mexico, by contrast, probed for one of the standard race categories. Finally, California coded the race of Hispanics as White unless they identified themselves as belonging to one of the other standard races the first time they were asked the question. These differences in protocol significantly affect the percentage Non-white in states with large Hispanic populations and can introduce substantial bias in the race-specific risk factor prevalences for these areas.

Respondent Age Distribution: The discrepancy between the percentage in specific age groups in the sample and the corresponding percentage in the population is an indicator of the age bias of the sample. An age distribution that differs substantially from the population distribution in the survey area may produce biased estimates of risk factor prevalences, particularly since many characteristics of individuals are substantially affected by age. For example, younger persons tend to be healthier than those who are older. Such a discrepancy also suggests that interviewers may not be interviewing randomly selected respondents.

Item Nonresponse: Item non-response rates from completed interviews for selected items from the core questions have been calculated by state, and are shown in Section 3. The assumption is that these measures are an indication of overall interviewing and/or coding quality. The percentages shown are based upon the number of responses coded as missing or refused. On the questionnaire, the code 9 is generally listed as refused, but this code may capture some responses that were supposed to be answered, but for some reason were not, and appeared as a blank or other missing value symbol. These cases have been coded as 9 in order to meet the constraints of processing CATI and editing programs. It is important to note that any survey will have natural variation over sample sites; therefore, some variation between states is to be expected. In evaluating possible measurement error stemming from variation in item missing data rates across states, the goal is to identify outliers in the distribution of the indicators.

BRFSS CALL DISPOSITION CODES

- 01** Completed interview
- 02** Refused interview
- 03** Nonworking number
- 04** Ring-no-answer
- 05** Not a private residence
- 06** No eligible respondent at this number
- 07** Selected respondent not available during the interviewing period
- 08** Language barrier
- 09** Interview terminated within questionnaire
- 10** Line Busy
- 11** Respondent unable to communicate due to physical or mental impairment

**BRFSS CALL DISPOSITIONS
FREQUENCY DISTRIBUTION BY STATE, 1997**

State	1		2		3		4		5		6		7		8		9		10		11		TOTAL
	No	%	No	%	No	%	No	%	No	%	No	%	No	%	No	%	No	%	No	%	No	%	No
AK	1545	23.3	573	8.6	2013	30.4	823	12.4	1036	15.6	14	0.2	367	5.5	42	0.6	10	0.2	171	2.6	31	0.5	6625
AL	2176	28.8	700	9.3	1906	25.3	1096	14.5	891	11.8	28	0.4	468	6.2	10	0.1	34	0.5	112	1.5	127	1.7	7548
AR	1800	20.0	487	5.4	4223	47.0	738	8.2	1004	11.2	349	3.9	216	2.4	12	0.1	0	0.0	16	0.2	143	1.6	8988
AZ	1904	32.1	144	2.4	1773	29.9	976	16.5	831	14.0	22	0.4	201	3.4	17	0.3	2	0.0	50	0.8	9	0.2	5929
CA	4063	30.5	2195	16.5	1717	12.9	1380	10.4	1585	11.9	640	4.8	1245	9.4	252	1.9	28	0.2	28	0.2	172	1.3	13305
CO	1813	29.3	547	8.8	1964	31.7	594	9.6	926	14.9	22	0.4	239	3.9	10	0.2	19	0.3	13	0.2	48	0.8	6195
CT	2250	20.2	769	6.9	4616	41.5	848	7.6	1992	17.9	39	0.4	390	3.5	125	1.1	0	0.0	46	0.4	45	0.4	11120
DC	1505	22.6	347	5.2	2241	33.7	1000	15.0	1104	16.6	6	0.1	218	3.3	79	1.2	6	0.1	30	0.5	119	1.8	6655
DE	2556	29.5	619	7.1	1574	18.2	1937	22.4	1366	15.8	100	1.2	317	3.7	34	0.4	7	0.1	53	0.6	100	1.2	8663
FL	3495	23.5	1999	13.4	2936	19.7	2475	16.6	2445	16.4	218	1.5	879	5.9	103	0.7	45	0.3	59	0.4	224	1.5	14878
GA	2308	40.5	337	5.9	1494	26.2	572	10.0	742	13.0	9	0.2	137	2.4	28	0.5	15	0.3	24	0.4	35	0.6	5701
HI	2169	32.4	730	10.9	458	6.8	1797	26.9	111	1.7	65	1.0	850	12.7	253	3.8	0	0.0	119	1.8	137	2.0	6689
IA	3600	38.8	532	5.7	2270	24.5	576	6.2	1258	13.6	7	0.1	762	8.2	37	0.4	9	0.1	15	0.2	206	2.2	9272
ID	4923	24.5	2003	9.9	7412	36.8	1335	6.6	3061	15.2	67	0.3	710	3.5	113	0.6	129	0.6	62	0.3	316	1.6	20131
IL	2886	21.2	1675	12.3	3108	22.8	2104	15.4	2189	16.0	73	0.5	1227	9.0	172	1.3	20	0.1	0	0.0	186	1.4	13640
IN	2372	26.4	830	9.2	2852	31.8	1134	12.6	1099	12.2	17	0.2	465	5.2	24	0.3	13	0.1	121	1.3	49	0.5	8976
KS	2004	59.7	164	4.9	270	8.0	464	13.8	245	7.3	25	0.7	125	3.7	23	0.7	5	0.1	3	0.1	29	0.9	3357
KY	3613	33.1	573	5.2	3568	32.7	1019	9.3	1149	10.5	33	0.3	723	6.6	9	0.1	7	0.1	52	0.5	173	1.6	10919
LA	1656	27.6	546	9.1	1586	26.5	1017	17.0	678	11.3	164	2.7	171	2.9	31	0.5	4	0.1	47	0.8	95	1.6	5995
MA	1770	17.4	869	8.5	3421	33.6	1083	10.7	2234	22.0	34	0.3	468	4.6	167	1.6	2	0.0	82	0.8	39	0.4	10169
MD	4576	25.3	2421	13.4	4032	22.3	3151	17.4	3392	18.7	75	0.4	204	1.1	95	0.5	0	0.0	99	0.5	66	0.4	18111
ME	1699	32.3	353	6.7	1561	29.7	388	7.4	604	11.5	99	1.9	467	8.9	5	0.1	19	0.4	29	0.6	36	0.7	5260
MI	2567	17.9	1548	10.8	6291	43.8	699	4.9	2192	15.3	105	0.7	802	5.6	64	0.4	4	0.0	6	0.0	94	0.7	14372
MN	4818	34.7	407	2.9	4577	33.0	1669	12.0	1717	12.4	50	0.4	363	2.6	62	0.4	14	0.1	129	0.9	82	0.6	13888
MO	1849	23.5	392	5.0	1799	22.9	1418	18.0	1257	16.0	43	0.5	894	11.4	24	0.3	39	0.5	45	0.6	109	1.4	7869
MS	1599	35.9	396	8.9	1011	22.7	504	11.3	573	12.9	13	0.3	196	4.4	2	0.0	29	0.7	46	1.0	85	1.9	4454
MT	1803	31.0	272	4.7	2007	34.5	518	8.9	778	13.4	43	0.7	257	4.4	5	0.1	9	0.2	50	0.9	82	1.4	5824
NC	3633	27.7	1049	8.0	3548	27.1	1978	15.1	1749	13.3	187	1.4	647	4.9	31	0.2	16	0.1	177	1.4	95	0.7	13110
ND	1802	38.4	153	3.3	1526	32.5	433	9.2	508	10.8	29	0.6	196	4.2	7	0.1	2	0.0	10	0.2	24	0.5	4690
NE	2704	19.1	779	5.5	6859	48.5	1144	8.1	1838	13.0	29	0.2	495	3.5	68	0.5	3	0.0	168	1.2	61	0.4	14148
NH	1514	24.0	515	8.2	1383	22.0	1096	17.4	987	15.7	74	1.2	589	9.3	23	0.4	4	0.1	55	0.9	60	1.0	6300
NJ	2667	19.5	938	6.8	3952	28.8	1815	13.2	2970	21.7	66	0.5	886	6.5	266	1.9	4	0.0	105	0.8	42	0.3	13711
NM	1813	29.3	547	8.8	1964	31.7	594	9.6	926	14.9	22	0.4	239	3.9	10	0.2	19	0.3	13	0.2	48	0.8	6195
NV	2507	24.9	406	4.0	4211	41.8	818	8.1	1251	12.4	227	2.3	261	2.6	215	2.1	0	0.0	96	1.0	89	0.9	10081
NY	3403	22.7	1643	11.0	3245	21.6	2397	16.0	2395	16.0	7	0.0	824	5.5	640	4.3	82	0.5	154	1.0	213	1.4	15003
OH	3166	25.8	1161	9.5	3385	27.6	1796	14.6	1854	15.1	12	0.1	709	5.8	22	0.2	10	0.1	90	0.7	61	0.5	12266
OK	1885	32.4	505	8.7	1347	23.2	1006	17.3	711	12.2	85	1.5	188	3.2	10	0.2	17	0.3	52	0.9	11	0.2	5817
OR	3321	19.8	1782	10.6	5487	32.7	1230	7.3	3835	22.9	31	0.2	580	3.5	140	0.8	79	0.5	76	0.5	202	1.2	16763
PA	3603	22.6	1302	8.1	6018	37.7	1312	8.2	2740	17.1	44	0.3	740	4.6	70	0.4	2	0.0	83	0.5	63	0.4	15977
PR	2261	52.2	159	3.7	1091	25.2	166	3.8	547	12.6	16	0.4	8	0.2	9	0.2	19	0.4	0	0.0	54	1.2	4330
RI	1842	21.9	766	9.1	3107	36.9	686	8.2	1327	15.8	21	0.2	465	5.5	106	1.3	2	0.0	51	0.6	39	0.5	8412
SC	2158	21.7	354	3.6	2531	25.5	2245	22.6	1661	16.7	167	1.7	296	3.0	7	0.1	2	0.0	386	3.9	130	1.3	9937
SD	2200	33.5	542	8.2	2311	35.1	660	10.0	545	8.3	15	0.2	230	3.5	4	0.1	11	0.2	32	0.5	26	0.4	6576
TN	2983	24.7	1249	10.3	3941	32.7	2262	18.7	1117	9.3	57	0.5	206	1.7	21	0.2	10	0.1	113	0.9	109	0.9	12068
TX	2504	25.5	1213	12.4	1728	17.6	2065	21.0	1403	14.3	68	0.7	536	5.5	19	0.2	2	0.0	124	1.3	148	1.5	9810
UT	2865	31.3	459	5.0	2754	30.1	1314	14.4	996	10.9	29	0.3	409	4.5	61	0.7	14	0.2	187	2.0	61	0.7	9149
VA	3524	20.1	1124	6.4	7201	41.1	1338	7.6	2861	16.3	128	0.7	808	4.6	178	1.0	1	0.0	0	0.0	340	1.9	17503
VT	3193	21.1	482	3.2	7879	52.2	1042	6.9	1832	12.1	89	0.6	465	3.1	23	0.2	5	0.0	45	0.3	50	0.3	15105
WA	3604	24.4	1768	12.0	3560	24.1	1054	7.1	2985	20.2	325	2.2	796	5.4	184	1.2	126	0.9	215	1.5	174	1.2	14791
WI	2245	23.1	785	8.1	4560	47.0	215	2.2	1605	16.5	124	1.3	73	0.8	0	0.0	38	0.4	21	0.2	44	0.5	9710
WV	2438	35.9	721	10.6	1395	20.6	786	11.6	833	12.3	27	0.4	410	6.0	5	0.1	5	0.1	53	0.8	113	1.7	6786
WY	2414	24.9	764	7.9	3926	40.5	638	6.6	1417	14.6	24	0.2	325	3.3	35	0.4	47	0.5	16	0.2	98	1.0	9704
CUM	135568	25.9	43594	8.3	161589	30.9	61405	11.8	77352	14.8	4263	0.8	24742	4.7	3952	0.8	989	0.2	3829	0.7	5192	1.0	522475
MED	2393	25.4	*****	8.1	*****	30.0	*****	11.0	*****	14.2	*****	0.4	*****	4.4	*****	0.4	*****	0.1	*****	0.6	*****	0.9	*****

Revised 2/25/99

BRFSS CASRO RESPONSE RATE ESTIMATES*
BY STATE, 1993-1997

State	1993 Rate	1994 Rate	1995 Rate	1996 Rate	1997 Rate
AK	75.1	74.6	68.4	62.9	59.5
AL	91.1	71.0	68.3	69.1	59.6
AR	69.7	71.9	65.7	62.5	65.9
AZ	64.2	63.5	65.1	67.1	72.5
CA	63.5	61.4	52.3	47.9	48.2
CO	75.8	74.8	77.4	74.4	62.5
CT	65.1	75.9	65.1	60.4	60.7
DC	79.1	76.1	NA	64.1	67.8
DE	73.6	69.7	68.3	63.5	59.8
FL	66.0	66.7	54.6	55.8	49.4
GA	63.3	62.5	77.6	87.1	76.8
HI	61.9	59.6	48.6	NA	41.3
IA	78.4	75.3	73.3	74.9	69.4
ID	73.6	66.2	66.8	59.6	59.0
IL	71.3	71.5	61.6	45.6	44.2
IN	80.1	77.1	78.9	73.2	62.8
KS	81.2	77.9	73.6	77.5	75.1
KY	73.8	73.6	72.6	65.5	69.6
LA	64.1	67.3	67.3	62.7	63.8
MA	62.8	65.4	60.4	56.6	50.4
MD	58.2	58.6	60.9	54.6	54.9
ME	73.6	73.2	70.2	66.0	66.1
MI	50.6	42.6	56.0	54.6	49.6
MN	74.9	73.3	78.1	73.6	77.9
MO	62.5	63.3	59.1	59.5	54.2
MS	73.6	73.1	75.4	71.3	67.4
MT	75.8	74.7	77.5	76.5	72.6
NC	69.4	68.3	69.2	59.3	64.4
ND	85.3	86.8	84.5	85.6	79.3
NE	75.9	70.2	67.5	68.0	61.6
NH	65.4	62.0	59.5	59.3	51.4
NJ	65.5	67.5	66.9	52.4	51.0
NM	53.7	53.3	52.5	61.2	62.5
NV	77.5	76.0	77.4	75.9	71.8
NY	65.4	60.6	60.2	50.6	51.6
OH	59.4	66.2	69.5	74.4	61.7
OK	82.2	71.2	76.2	72.8	72.3
OR	65.6	65.3	56.9	55.4	53.1
PA	66.5	66.0	64.1	61.8	58.2
PR	NA	NA	NA	NA	88.9
RI	73.1	NA	68.7	59.4	54.7
SC	66.0	76.8	74.5	60.9	58.8
SD	81.7	79.4	81.2	76.8	70.0
TN	68.2	65.4	68.7	62.5	60.1
TX	54.6	57.7	60.2	52.8	45.7
UT	76.1	79.4	78.5	77.6	71.9
VA	72.7	60.9	62.3	61.2	59.6
VT	71.5	72.3	74.5	71.6	71.5
WA	62.6	64.8	61.4	53.7	52.3
WI	76.7	74.7	71.9	69.6	69.7
WV	77.7	77.5	77.5	71.8	65.9
WY	NA	66.9	69.2	67.7	63.4
MEDIAN	71.4	70.0	68.4	63.2	62.1
RANGE	50.6-91.1	42.6-86.8	48.6-84.5	45.6-87.1	41.3-88.9

*Excluding wind-down records

Revised 2/25/99

BRFSS UPPER BOUND RESPONSE RATE ESTIMATES*
BY STATE, 1993-1997

State	1993 Rate	1994 Rate	1995 Rate	1996 Rate	1997 Rate
AK	85.8	84.7	80.0	75.3	74.4
AL	96.5	80.0	79.9	80.6	75.2
AR	79.6	81.4	76.0	73.1	78.7
AZ	71.5	74.6	73.6	81.9	92.6
CA	78.5	77.6	70.3	66.9	64.6
CO	88.4	86.0	86.1	83.2	76.2
CT	85.6	88.0	78.9	77.7	74.5
DC	90.7	88.3	NA	82.1	82.1
DE	89.9	89.4	89.9	85.1	80.2
FL	79.0	77.4	77.1	70.0	64.7
GA	73.2	68.5	83.4	93.5	86.7
HI	81.1	79.8	82.2	NA	74.8
IA	86.0	82.3	86.9	85.7	86.9
ID	82.3	77.8	76.0	69.8	69.8
IL	85.0	83.0	73.2	54.1	64.0
IN	88.7	85.5	89.9	82.5	74.3
KS	95.2	93.8	89.9	92.5	92.2
KY	89.2	88.5	87.1	84.1	86.6
LA	75.2	76.8	77.4	74.6	77.1
MA	69.3	72.6	69.1	68.2	67.0
MD	76.7	72.4	75.7	60.1	65.4
ME	84.0	83.0	83.8	78.2	82.7
MI	73.9	66.1	80.1	63.6	62.3
MN	86.1	84.9	92.9	89.0	92.1
MO	72.1	73.6	68.6	68.6	81.6
MS	83.2	85.2	85.3	81.2	79.5
MT	90.2	88.1	88.7	88.6	86.2
NC	81.8	82.5	86.8	81.8	78.2
ND	94.3	95.4	95.0	94.4	92.4
NE	88.3	83.2	80.4	83.7	77.6
NH	75.7	76.7	78.7	77.3	73.9
NJ	85.3	86.5	86.7	76.5	73.9
NM	63.0	61.9	60.5	69.5	76.2
NV	89.4	86.6	90.4	87.1	86.1
NY	77.9	74.9	72.4	62.3	67.1
OH	74.2	79.4	81.4	83.2	76.8
OK	87.3	75.2	79.2	78.5	79.0
OR	75.9	76.9	67.9	67.1	64.1
PA	70.5	70.3	69.0	78.0	73.4
PR	NA	NA	NA	NA	92.7
RI	78.8	NA	76.9	70.6	70.6
SC	81.0	84.2	83.9	75.9	85.6
SD	91.5	90.6	89.0	86.1	80.1
TN	79.5	77.7	79.9	75.0	72.2
TX	75.3	73.4	75.6	74.0	67.3
UT	85.2	87.7	87.4	88.3	87.0
VA	81.4	76.2	75.9	76.4	75.8
VT	87.5	88.3	89.3	87.4	86.8
WA	71.1	73.5	72.0	66.4	65.6
WI	79.9	78.4	74.5	72.5	73.2
WV	85.1	85.0	85.0	81.2	78.2
WY	NA	81.4	79.5	77.9	74.9
MEDIAN	82.1	81.4	80.0	77.9	76.5
RANGE	63.0-96.5	61.9-95.4	60.5-95.0	54.1-94.4	62.3-92.7

*Excluding wind-down records

Revised 2/25/99

BRFSS EFFICIENCY RATES
BY STATE, 1993-1997

State	1993 Rate	1994 Rate	1995 Rate	1996 Rate	1997 Rate
AK	17.1	23.8	22.4	23.7	23.3
AL	58.0	45.2	40.6	37.0	28.8
AR	39.7	38.2	35.6	19.8	20.0
AZ	30.9	33.3	31.5	32.2	32.1
CA	24.5	36.1	31.5	33.6	30.5
CO	35.1	31.4	29.0	28.6	29.3
CT	52.3	49.5	26.3	20.1	20.2
DC	29.1	29.1	NA	19.1	22.6
DE	42.0	40.0	38.8	34.0	29.5
FL	33.5	36.1	30.3	26.3	23.5
GA	34.9	29.0	38.2	46.3	40.5
HI	25.6	22.6	17.9	NA	32.4
IA	42.8	39.4	41.1	40.0	38.8
ID	33.4	27.0	31.5	28.4	24.5
IL	27.0	27.0	23.6	21.9	21.2
IN	44.6	39.3	41.6	37.2	26.4
KS	56.3	60.6	54.3	59.7	59.7
KY	35.0	30.3	35.4	29.0	33.1
LA	33.3	35.8	33.6	30.0	27.6
MA	34.6	35.5	25.1	23.3	17.4
MD	28.7	28.2	27.5	27.3	25.3
ME	35.7	36.5	35.4	33.2	32.3
MI	25.1	21.9	10.4	19.1	17.9
MN	44.9	40.8	34.5	33.4	34.7
MO	29.0	28.8	22.7	24.6	23.5
MS	41.2	37.5	42.5	35.2	35.9
MT	36.1	35.0	36.0	34.8	31.0
NC	30.3	29.8	30.7	27.8	27.7
ND	47.7	44.3	43.6	43.2	38.4
NE	28.6	29.8	19.3	17.7	19.1
NH	28.8	25.9	26.4	26.3	24.0
NJ	52.0	53.8	45.5	16.9	19.5
NM	29.3	25.8	24.9	27.0	29.3
NV	54.0	42.7	58.8	54.9	24.9
NY	29.9	27.5	24.0	21.2	22.7
OH	34.5	29.6	29.7	28.6	25.8
OK	42.7	23.6	30.0	25.6	32.4
OR	35.2	32.4	25.9	21.9	19.8
PA	36.3	36.3	32.2	20.2	22.6
PR	NA	NA	NA	NA	52.2
RI	40.7	NA	29.6	25.9	21.9
SC	26.2	31.6	30.4	26.1	21.7
SD	53.1	48.5	39.5	37.5	33.5
TN	39.3	30.1	35.3	30.2	24.7
TX	28.3	32.4	31.0	30.4	25.5
UT	31.7	34.7	33.3	34.1	31.3
VA	39.0	36.1	33.6	18.7	20.1
VT	44.0	46.3	35.0	19.0	21.1
WA	41.0	41.2	37.9	22.8	24.4
WI	27.5	26.8	27.0	24.6	23.1
WV	43.1	42.1	42.5	41.3	35.9
WY	NA	28.7	27.6	29.4	24.9
MEDIAN	35.1	34.0	31.5	28.1	25.4
RANGE	17.1-58.0	21.9-60.6	10.4-58.8	16.9-59.7	17.4-59.7

Revised 2/25/99

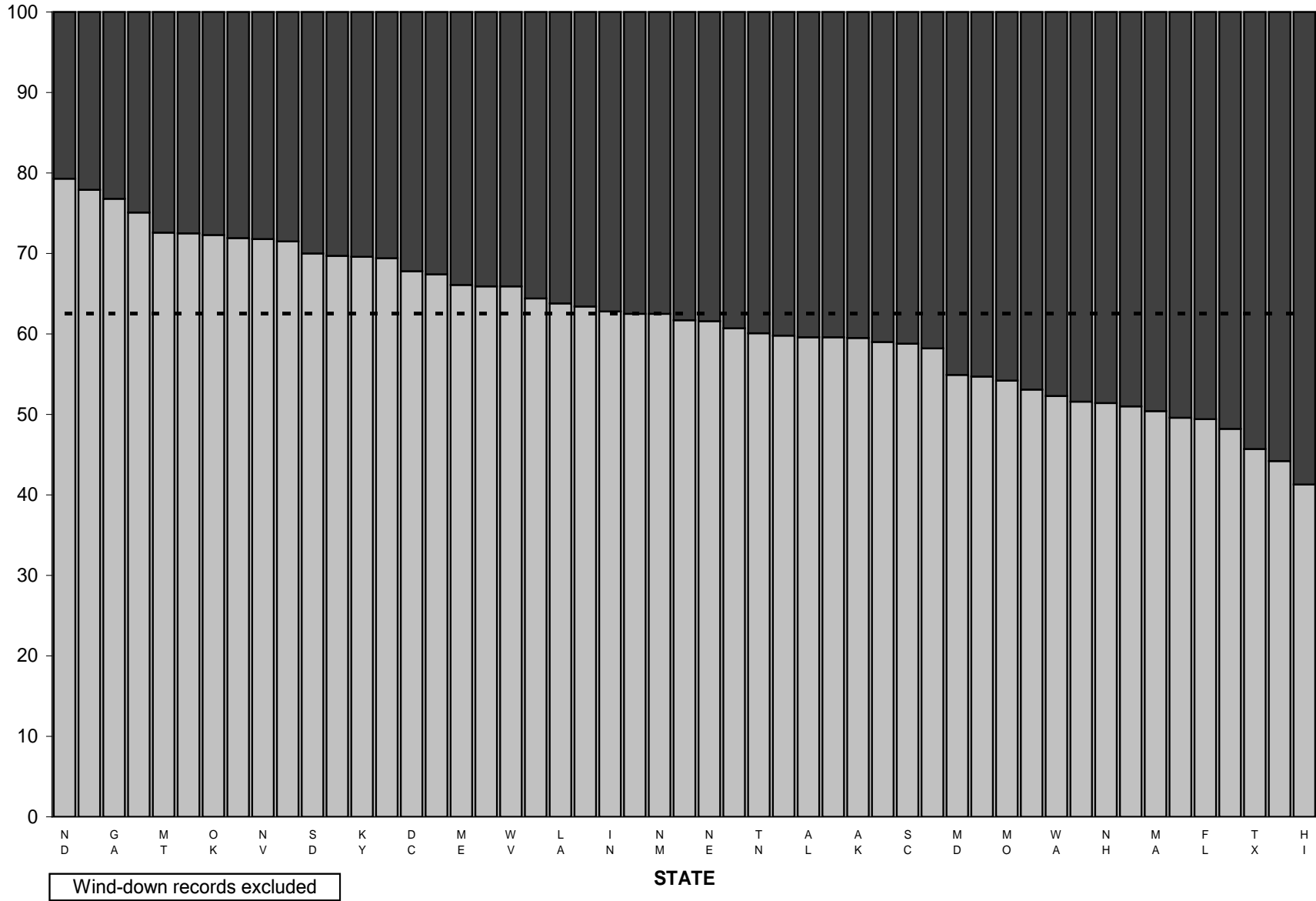
**BRFSS WIND-DOWN RATES
BY STATE, 1993-1997**

State	1993		1994		1995		1996		1997	
	Rate	Obj Met	Rate	Obj Met	Rate	Obj Met	Rate	Obj Met	Rate	Obj Met
AK	5.5	N	5.9	N	5.8	N	6.6	N	8.7	N
AL	0.3	Y	0.8	Y	5.1	N	5.5	N	3.5	Y
AR	4.9	Y	4.5	Y	4.9	Y	0.0	Y	0.0	Y
AZ	6.4	N	5.0	Y	6.0	N	4.9	Y	4.8	Y
CA	12.2	N	0.0	Y	0.0	Y	0.0	Y	0.0	Y
CO	4.8	Y	5.0	Y	0.0	Y	0.0	Y	0.0	Y
CT	0.0	Y	0.0	Y	0.0	Y	0.0	Y	0.0	Y
DC	5.7	N	3.1	Y	NA	NA	6.9	N	4.5	Y
DE	1.2	Y	1.1	Y	0.8	Y	1.9	Y	3.8	Y
FL	3.8	Y	3.0	Y	3.5	Y	2.9	Y	3.6	Y
GA	0.4	Y	5.2	N	5.0	Y	4.7	Y	2.0	Y
HI	3.9	Y	5.0	Y	5.1	N	NA	NA	0.0	Y
IA	8.9	N	4.8	Y	0.0	Y	0.0	Y	0.6	Y
ID	3.4	Y	0.6	Y	5.7	N	4.8	Y	0.0	Y
IL	4.8	Y	0.0	Y	1.3	Y	2.5	Y	2.6	Y
IN	4.4	Y	4.8	Y	4.4	Y	4.7	Y	4.6	Y
KS	4.4	Y	2.3	Y	1.1	Y	0.4	Y	0.0	Y
KY	5.4	N	5.8	N	5.2	N	4.3	Y	3.2	Y
LA	5.3	N	4.3	Y	4.2	Y	3.7	Y	3.9	Y
MA	0.0	Y	0.0	Y	0.0	Y	0.0	Y	0.0	Y
MD	2.7	Y	7.9	N	13.6	N	3.2	Y	3.8	Y
ME	5.2	N	7.7	N	5.9	N	6.3	N	6.0	N
MI	0.0	Y	0.0	Y	0.0	Y	0.0	Y	0.0	Y
MN	2.9	Y	5.5	N	3.1	Y	1.6	Y	2.0	Y
MO	6.5	N	0.0	Y	6.7	N	5.9	N	5.3	N
MS	5.2	N	6.3	N	6.0	N	4.6	Y	4.1	Y
MT	4.5	Y	4.4	Y	4.8	Y	4.3	Y	4.5	Y
NC	2.6	Y	5.1	N	4.0	Y	2.0	Y	5.1	N
ND	4.3	Y	4.1	Y	5.3	N	4.8	Y	4.8	Y
NE	5.4	N	0.0	Y	0.0	Y	0.0	Y	0.0	Y
NH	0.0	Y	7.7	N	6.9	N	6.7	N	6.9	N
NJ	0.0	Y	0.0	Y	0.0	Y	0.0	Y	0.0	Y
NM	8.7	N	28.6	N	13.1	N	12.0	N	0.0	Y
NV	0.0	Y	0.0	Y	0.0	Y	0.0	Y	0.0	Y
NY	4.2	Y	7.9	N	7.0	N	5.7	N	3.0	Y
OH	9.4	N	6.3	N	7.1	N	0.0	Y	11.4	N
OK	7.7	N	22.3	N	13.8	N	18.8	N	16.4	N
OR	3.4	Y	4.0	Y	4.1	Y	0.0	Y	0.0	Y
PA	0.0	Y	0.0	Y	0.0	Y	0.0	Y	0.0	Y
PR	NA	NA	NA	NA	NA	NA	NA	NA	0	Y
RI	0.0	Y	NA	NA	0.0	Y	0.0	Y	0.0	Y
SC	17.6	N	17.9	N	13.1	N	9.8	N	3.8	Y
SD	4.7	Y	6.1	N	10.1	N	7.8	N	3.8	Y
TN	3.3	Y	4.7	Y	6.7	N	7.7	N	7.1	N
TX	6.1	N	5.0	Y	4.7	Y	0.0	Y	0.0	Y
UT	5.6	N	4.9	Y	6.1	N	4.7	Y	3.9	Y
VA	3.4	Y	4.8	Y	4.3	Y	0.0	Y	0.0	Y
VT	0.0	Y	0.0	Y	0.0	Y	0.0	Y	0.0	Y
WA	0.0	Y	0.0	Y	0.0	Y	0.0	Y	0.0	Y
WI	0.0	Y	0.0	Y	0.0	Y	0.0	Y	0.0	Y
WV	4.9	Y	5.3	N	5.0	Y	5.0	Y	5.0	Y
WY	NA	NA	0.7	Y	5.7	N	5.4	N	0.0	Y
MEDIAN	4.4	Y	4.6	Y	4.8	Y	3.1	Y	2.3	Y
RANGE	0-17.6	33 of 50	0-28.6	34 of 50	0-13.8	29 of 50	0-18.8	37 of 50	0-16.4	44 of 52

Revised 2/25/99

BRFSS CASRO ESTIMATES OF RESPONSE AND REFUSAL RATES

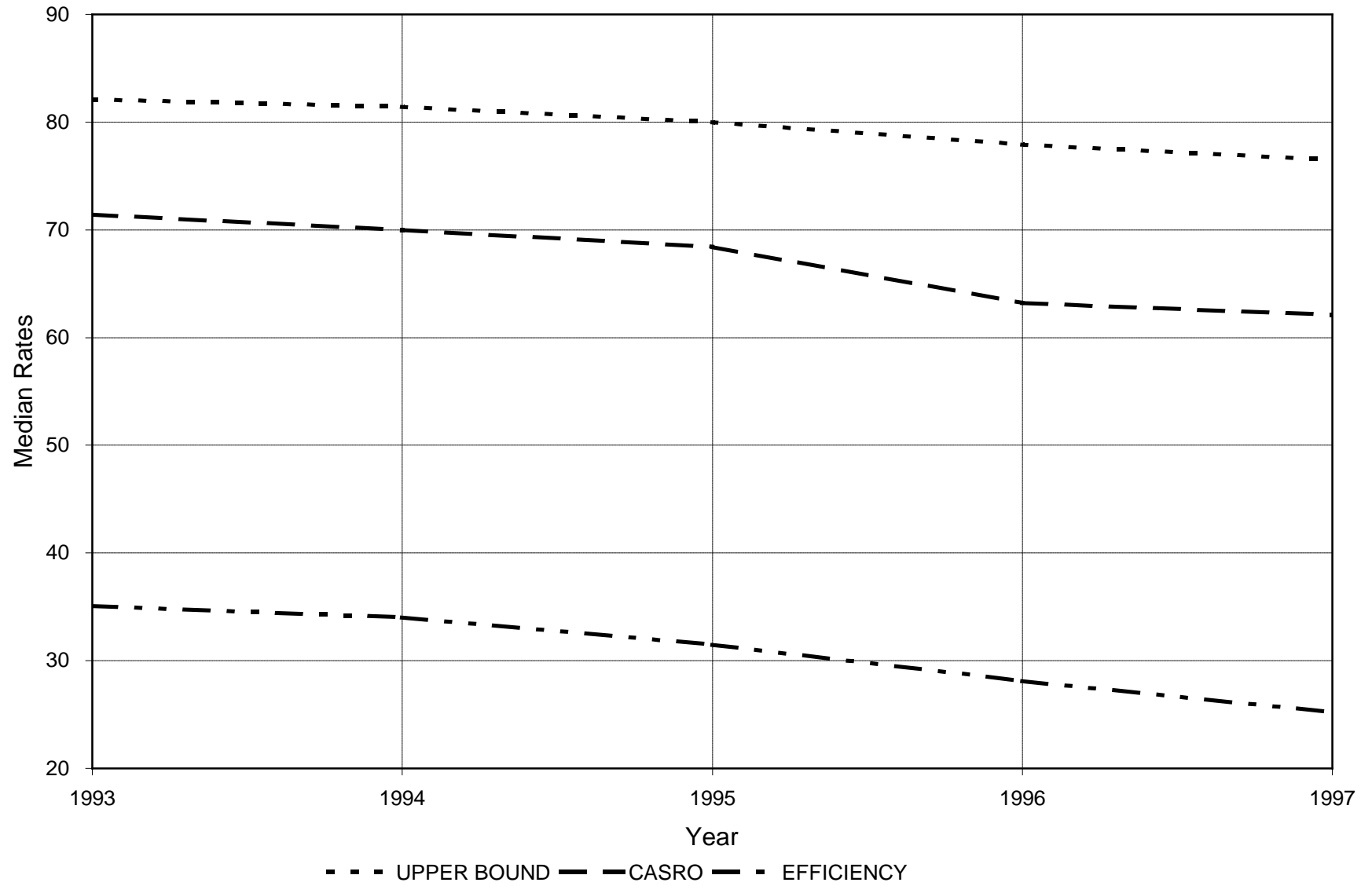
BY STATE, 1997



RESPONSE RATE
 REFUSAL RATE
 BRFSS MEDIAN

Revised 2/25/99

BRFSS
MEDIAN UPPER BOUND, CASRO, AND EFFICIENCY
1993-1997



STATUS OF MONITORING SYSTEMS 1997

December 31, 1997

STATE	AUDIO (Y/N)	CATI DISPLAY (Y/N/NA)	COMMENTS
AL	N	N	2-way audio/video in '98
AK	N	N	
AZ	N	N	
AR	N	N	
CA	Y	Y	
CO	Y	Y	
CT	Y	Y	
DE	N	NA	Interview from homes.
DC	N	N	
FL	Y	Y	
GA	N	N	Contractor in December = Y/Y
HI	Y	N	
ID	Y	Y	
IL	N	Y	
IN	Y	Y	
IA	Y	Y	
KS	N	NA	Expect to install equipment by 1/98
KY	N	N	
LA	N	NA	
ME	N	Y	
MD	N	NA	Interview from homes.
MA	Y	Y	
MI	Y	Y	
MN	N	Y	
MS	Y	N	
MO	N	N	
MT	Y	N	
NE	Y	Y	
NV	Y	N	
NH	Y	Y	
NJ	Y	Y	
NM	Y	N	
NY	Y	N	
NC	N	N	
ND	Y	N	Expect to install video by 1/98
OH	Y	Y	
OK	N	Y	
OR	Y	Y	
PA	Y	Y	
PR	N	N	
RI	Y	Y	
SC	N	N	Bought, not installed; legal privacy problems
SD	N	N	
TN	N	N	Ordered but not installed
TX	Y	Y	
UT	Y	N	Expect to install video software in 98
VT	Y	Y	
VA	Y	Y	
WA	Y	Y	
WV	N	N	Working on video; considering audio.
WI	Y	Y	
WY	Y	Y	
TOTALS	30 with audio, 22 with audio and video		

Interpretation of summary statistics

Some of the tables in Section 3 contain Z-scores. Z-scores indicate how many standard deviations values are from the mean, and are one way of assessing the location of a case in a distribution. Standardization permits comparison of the scores from different distributions (e.g. states). Observations below the mean have a negative z-score. As a general guide, z-scores falling outside the -2.0 to 2.0 range can be considered extreme values, and indicate possible problems in the item.

SECTION 2

DEMOGRAPHIC VARIABLES USED IN WEIGHTING

TABLE 1: PERCENTAGE OF RECORDS WITH A CLUSTER SIZE OF THREE,
WAKSBERG STATES, 1993-1997

STATE	1993	1994	1995	1996	1997	MEAN
Delaware	99.4	99.3	100.0	100.0	100.0	99.7
Illinois	92.0	94.4	97.6	100.0	100.0	96.8
Louisiana	98.3	97.2	99.8	100.0	100.0	99.0
North Dakota	99.7	100.0	100.0	97.9	99.7	99.5
Florida	98.8	98.8	89.7	98.8	99.6	97.1
Minnesota	99.9	100.0	97.3	93.6	99.6	98.1
Montana	99.9	95.0	98.3	99.7	99.5	98.5
Tennessee	99.1	99.6	100.0	99.7	99.5	99.6
District of Columbia	95.1	98.5	.	87.7	99.3	95.2
Maine	100.0	91.9	95.0	98.4	99.1	96.9
Ohio	.	78.6	83.6	96.5	98.9	89.4
Kentucky	96.1	97.7	98.2	98.7	98.8	97.9
New Mexico	99.5	97.3	69.8	60.2	98.8	85.1
West Virginia	99.3	96.2	98.0	99.5	98.7	98.3
Mississippi	99.9	96.7	98.6	98.6	98.7	98.5
Missouri	98.8	98.9	83.4	95.4	98.6	95.0
New York	98.3	98.1	99.4	98.1	98.3	98.4
South Carolina	80.2	85.5	82.3	76.6	98.0	84.5
Alabama	99.6	96.7	99.8	99.9	97.9	98.8
Maryland	97.4	97.5	98.2	98.2	97.7	97.8
Utah	95.7	90.6	96.6	97.4	97.5	95.5
New Hampshire	.	92.1	93.1	95.7	96.5	94.3
Arizona	95.4	99.4	.	91.1	96.3	95.5
North Carolina	92.8	87.2	93.3	86.2	95.1	90.9
Georgia	98.7	96.9	98.7	99.7	93.7	97.6
Oklahoma	99.6	86.6	94.8	84.0	93.6	91.7
Iowa	100.0	95.8	94.9	93.8	93.3	95.6
Indiana	97.9	99.8	100.0	100.0	88.0	97.1
South Dakota	99.8	89.3	94.5	97.3	82.2	92.6

TABLE 2: DISCREPANCY IN PERCENTAGE FEMALE BETWEEN THE WEIGHTED* SAMPLE DATA
AND POPULATION DATA BY STATE, 1993-1997

STATE	PERCENTAGE POINT DIFFERENCE					MEAN 1993-1997
	1993	1994	1995	1996	1997	
Tennessee	1.6	5.0	3.9	7.2	11.0	5.7
Kentucky	4.6	7.5	6.5	7.8	8.5	7.0
South Carolina	5.0	2.7	4.9	5.0	8.5	5.2
Arkansas	4.4	7.3	4.5	7.7	8.2	6.4
Nebraska	4.3	7.8	5.2	7.0	7.8	6.4
Alabama	5.3	10.4	8.5	9.7	7.5	8.3
New Jersey	7.3	7.4	12.6	3.3	7.5	7.6
Louisiana	6.3	7.5	5.5	5.4	7.5	6.4
New Hampshire	2.3	5.0	4.6	4.0	7.5	4.7
District of Columbia	4.4	2.4	.	5.0	7.2	4.7
Kansas	0.5	3.2	2.1	3.9	7.1	3.4
Missouri	4.8	8.9	7.3	4.6	7.1	6.5
Delaware	6.2	5.8	8.0	7.1	7.0	6.8
Ohio	7.5	7.3	7.6	5.9	6.7	7.0
Mississippi	5.2	5.7	4.6	7.9	6.6	6.0
Connecticut	6.7	8.8	3.6	7.3	6.5	6.6
Wyoming	.	5.7	6.2	6.5	6.4	6.2
Hawaii	4.9	5.9	5.0	.	6.4	5.5
Nevada	12.2	13.6	11.4	7.9	6.3	10.3
Idaho	11.4	6.5	7.6	6.2	6.2	7.6
Texas	6.5	6.9	9.4	8.5	6.2	7.5
Pennsylvania	1.4	3.3	2.0	2.8	6.0	3.1

North Carolina	1.3	2.9	5.5	4.7	5.8	4.0
Washington	2.3	3.1	4.4	6.3	5.5	4.3
Virginia	4.6	3.7	6.7	8.7	5.5	5.9
New York	3.4	4.4	4.5	4.9	5.5	4.5
Illinois	3.8	6.0	5.5	6.3	5.4	5.4
Florida	3.9	3.9	4.8	6.1	5.3	4.8
West Virginia	6.6	5.4	7.1	6.9	5.2	6.2
Massachusetts	1.3	4.5	3.6	4.2	5.0	3.7
New Mexico	5.8	9.2	9.1	7.9	4.9	7.4
Rhode Island	0.0	.	0.5	2.2	4.7	1.9
Alaska	6.6	4.7	6.3	6.1	4.7	5.7
California	4.2	4.5	2.7	5.2	4.7	4.2
Montana	6.4	5.8	5.4	4.5	4.6	5.3
Iowa	0.3	1.7	4.4	4.0	4.5	3.0
Oregon	1.4	4.2	4.1	5.0	4.1	3.8
Georgia	3.1	3.3	3.0	3.1	3.9	3.3
Michigan	2.2	4.9	6.4	4.3	3.7	4.3
Oklahoma	4.3	3.8	1.3	2.7	3.5	3.1
Maryland	5.2	3.9	5.4	4.7	2.8	4.4
South Dakota	3.1	3.9	3.3	3.4	2.8	3.3
Wisconsin	0.4	2.3	1.0	2.6	2.7	1.8
Vermont	5.4	4.1	5.0	3.2	2.6	4.1
Puerto Rico	2.5	2.5
Colorado	5.5	3.6	4.2	3.9	2.5	3.9
North Dakota	2.2	2.0	2.9	6.2	2.3	3.1
Utah	6.8	4.2	3.6	2.8	2.2	3.9
Indiana	3.4	3.4	1.8	3.2	2.1	2.8
Maine	3.1	-0.1	2.5	3.6	1.8	2.2
Minnesota	2.8	2.4	2.4	2.9	1.3	2.4
Arizona	4.6	5.8	9.1	5.2	-0.2	4.9

* Weighted probability of selection (number of phones, number of adults, and selection of telephone numbers by stratum)

TABLE 3: DISCREPANCY IN PERCENTAGE NON-WHITE BETWEEN SAMPLE AND POPULATION BY STATE OTHER HISPANICS ARE CODED AS NON-WHITE, 1997

RANK	STATE	SAMPLE				POPULATION		RATIO S/P	DIFFERENCE S-P
		UNWEIGHTED		WEIGHTED		N	%		
		N	%	N	%				
1	New Mexico	524.0	29.3	1013.9	31.7	140,101	11.4	2.8	20.3
2	Texas	707.0	28.4	1307.7	30.3	2,027,245	14.6	2.1	15.7
3	Nevada	340.0	13.6	12461.0	17.7	151,911	12.3	1.4	5.4
4	District of Columbia	1022.0	68.2	1373.5	68.6	269,970	63.4	1.1	5.2
5	Colorado	202.0	11.1	342.3	10.8	198,806	6.9	1.6	3.9
6	Hawaii	1378.0	63.8	8015.7	69.2	595,524	66.5	1.0	2.7
7	Idaho	247.0	5.0	737.8	5.2	22,417	2.6	2.0	2.6
8	Ohio	488.0	15.5	974.3	13.9	967,827	11.6	1.2	2.2
9	Oregon	240.0	7.3	775.5	7.8	137,636	5.7	1.4	2.1
10	Wyoming	119.0	4.9	232.6	5.2	10,949	3.2	1.6	2.1
11	North Carolina	863.0	23.9	1489.9	23.9	1,260,530	22.4	1.1	1.5
12	Vermont	72.0	2.3	150.0	2.7	5,939	1.3	2.0	1.3
13	South Dakota	138.0	6.3	290.5	7.6	35,333	6.7	1.1	1.0
14	Arizona	215.0	11.3	1688.2	10.8	324,802	9.8	1.1	0.9
15	Missouri	273.0	14.8	675.1	12.5	464,544	11.6	1.1	0.9
16	New Hampshire	35.0	2.3	67.8	2.5	14,888	1.7	1.5	0.8
17	Kansas	170.0	8.5	283.0	8.4	148,142	7.8	1.1	0.6
18	New Jersey	472.0	18.0	831.0	19.1	1,143,022	18.6	1.0	0.5
19	Nebraska	275.0	10.2	839.7	5.7	62,945	5.2	1.1	0.5
20	Utah	123.0	4.3	2771.8	4.8	60,669	4.6	1.0	0.2
21	Maine	25.0	1.5	41.0	1.4	11,790	1.3	1.1	0.2
22	Indiana	216.0	9.1	408.0	8.6	370,254	8.5	1.0	0.1
23	Wisconsin	131.0	5.9	18918.0	6.7	254,654	6.7	1.0	0.1
24	Rhode Island	118.0	6.4	212.5	6.7	50,340	6.6	1.0	0.1
25	Massachusetts	157.0	9.0	267.0	8.9	417,584	8.9	1.0	0.0
26	New York	706.0	20.9	1248.0	21.9	3,042,414	22.0	1.0	-0.1
27	Michigan	411.0	16.1	682.3	15.1	1,086,348	15.3	1.0	-0.2
28	Kentucky	273.0	7.6	438.9	7.1	210,444	7.2	1.0	-0.2
29	Minnesota	244.0	5.1	437.7	5.2	186,290	5.4	1.0	-0.2
30	Montana	93.0	5.2	166.0	5.3	36,248	5.6	0.9	-0.3
31	Iowa	100.0	2.8	171.0	2.6	63,955	3.0	0.9	-0.4
32	North Dakota	73.0	4.1	130.5	4.3	21,811	4.6	0.9	-0.4
33	Washington	304.0	8.5	608.0	9.5	409,377	9.9	1.0	-0.4
34	Connecticut	228.0	10.3	383.8	10.0	262,797	10.5	1.0	-0.5
35	Pennsylvania	369.0	10.3	626.2	9.9	963,250	10.5	0.9	-0.6
36	South Carolina	606.0	28.4	988.3	27.6	775,731	28.2	1.0	-0.7
37	Georgia	643.0	27.9	1072.3	27.1	1,526,172	27.8	1.0	-0.7
38	Tennessee	473.0	15.9	766.2	14.9	638,512	15.8	0.9	-0.9
39	Florida	476.0	13.7	782.5	13.8	1,662,667	14.7	0.9	-0.9
40	Delaware	476.0	18.7	1180.6	18.4	106,940	19.5	0.9	-1.0
41	West Virginia	66.0	2.7	111.0	2.5	49,906	3.6	0.7	-1.1
42	Arkansas	249.0	14.0	449.8	13.7	278,324	14.9	0.9	-1.1
43	Oklahoma	254.0	13.5	418.8	13.3	368,675	15.1	0.9	-1.7
44	Alabama	504.0	23.2	861.9	22.6	776,625	24.3	0.9	-1.8
45	Virginia	691.0	19.8	4542.5	20.3	1,123,896	22.1	0.9	-1.8
46	Alaska	412.0	27.1	2399.7	19.2	91,020	21.5	0.9	-2.2
47	Mississippi	490.0	30.7	893.2	30.8	649,761	33.2	0.9	-2.4
48	Louisiana	457.0	27.7	817.0	28.3	961,178	30.9	0.9	-2.6
49	Illinois	417.0	14.5	725.5	14.1	1,531,116	17.4	0.8	-3.3
50	Maryland	992.0	21.8	4274.2	26.0	1,154,956	30.1	0.9	-4.1
51	California	579.0	14.3	1056.2	14.7	4,677,953	19.8	0.7	-5.1

* Weighted probability of selection (number of phones, number of adults, and selection of telephone numbers by stratum)

TABLE 4: DISCREPANCY IN PERCENTAGE NON-WHITE BETWEEN SAMPLE AND POPULATION BY STATE OTHER HISPANICS ARE CODED AS WHITE, 1997

RANK	STATE	SAMPLE				POPULATION		RATIO S/P	DIFFERENCE S-P
		UNWEIGHTED		WEIGHTED		N	%		
		N	%	N	%				
1	District of Columbia	1015	67.8	1361.5	68.0	269,970	63.4	1.1	4.6
2	Ohio	481	15.2	955.8	13.6	967,827	11.6	1.2	2.0
3	Vermont	67	2.1	140.0	2.5	5,939	1.3	1.9	1.1
4	Idaho	170	3.5	502.2	3.6	22,417	2.6	1.3	0.9
5	North Carolina	841	23.3	1446.2	23.2	1,260,530	22.4	1.0	0.8
6	New Hampshire	31	2.1	59.8	2.2	14,888	1.7	1.3	0.5
7	South Dakota	129	5.9	270.5	7.1	35,333	6.7	1.1	0.4
8	Oregon	188	5.7	610.1	6.1	137,636	5.7	1.1	0.4
9	Missouri	261	14.1	646.6	12.0	464,544	11.6	1.0	0.4
10	Maine	24	1.4	40.0	1.4	11,790	1.3	1.1	0.1
11	Wyoming	72	3.0	143.1	3.2	10,949	3.2	1.0	0.0
12	Nevada	235	9.4	8677.9	12.3	151,911	12.3	1.0	0.0
13	Kentucky	271	7.5	432.9	7.0	210,444	7.2	1.0	-0.3
14	Kansas	153	7.7	252.0	7.5	148,142	7.8	1.0	-0.3
15	North Dakota	71	3.9	127.5	4.2	21,811	4.6	0.9	-0.5
16	Wisconsin	118	5.3	17204.0	6.1	254,654	6.7	0.9	-0.5
17	Colorado	120	6.6	200.5	6.3	198,806	6.9	0.9	-0.6
18	Washington	294	8.3	588.5	9.2	409,377	9.9	0.9	-0.7
19	Minnesota	223	4.6	394.7	4.7	186,290	5.4	0.9	-0.7
20	Montana	87	4.8	152.8	4.9	36,248	5.6	0.9	-0.8
21	Iowa	88	2.4	146.0	2.3	63,955	3.0	0.7	-0.8
22	Indiana	197	8.3	362.5	7.7	370,254	8.5	0.9	-0.9
23	Rhode Island	100	5.5	181.5	5.7	50,340	6.6	0.9	-0.9
24	Nebraska	239	8.9	625.2	4.2	62,945	5.2	0.8	-1.0
25	Hawaii	1299	60.1	7583.7	65.5	595,524	66.5	1.0	-1.0
26	Tennessee	468	15.7	757.2	14.8	638,512	15.8	0.9	-1.0
27	Pennsylvania	351	9.8	597.7	9.4	963,250	10.5	0.9	-1.0
28	Texas	354	14.2	582.3	13.5	2,027,245	14.6	0.9	-1.1
29	Arkansas	249	14.0	449.8	13.7	278,324	14.9	0.9	-1.1
30	West Virginia	64	2.6	106.0	2.4	49,906	3.6	0.7	-1.2
31	Michigan	390	15.3	634.8	14.1	1,086,348	15.3	0.9	-1.2
32	Massachusetts	132	7.5	229.0	7.6	417,584	8.9	0.9	-1.3
33	Delaware	468	18.4	1164.0	18.2	106,940	19.5	0.9	-1.3
34	South Carolina	594	27.8	962.8	26.9	775,731	28.2	1.0	-1.4
35	Utah	82	2.9	1857.0	3.2	60,669	4.6	0.7	-1.4
36	Georgia	627	27.2	1042.3	26.3	1,526,172	27.8	0.9	-1.5
37	Florida	452	13.0	745.8	13.2	1,662,667	14.7	0.9	-1.6
38	New Mexico	165	9.2	313.2	9.8	140,101	11.4	0.9	-1.6
39	Connecticut	197	8.9	330.0	8.6	262,797	10.5	0.8	-1.9
40	New York	640	19.0	1136.0	19.9	3,042,414	22.0	0.9	-2.0
41	Alabama	497	22.9	849.4	22.2	776,625	24.3	0.9	-2.1
42	Virginia	672	19.2	4411.1	19.7	1,123,896	22.1	0.9	-2.4
43	Oklahoma	239	12.7	392.8	12.5	368,675	15.1	0.8	-2.6
44	Alaska	407	26.8	2354.3	18.9	91,020	21.5	0.9	-2.6
45	Mississippi	486	30.4	886.2	30.6	649,761	33.2	0.9	-2.6
46	New Jersey	401	15.3	691.5	15.9	1,143,022	18.6	0.9	-2.7
47	Illinois	416	14.4	723.5	14.1	1,531,116	17.4	0.8	-3.3
48	Louisiana	442	26.8	790.0	27.3	961,178	30.9	0.9	-3.5
49	Arizona	148	7.8	907.0	5.8	324,802	9.8	0.6	-4.0
50	Maryland	974	21.4	4174.1	25.4	1,154,956	30.1	0.8	-4.7
51	California	579	14.3	1056.2	14.7	4,677,953	19.8	0.7	-5.1
1	District of Columbia	1015	67.8	1361.5	68.0	269,970	63.4	1.1	4.6
2	Ohio	481	15.2	955.8	13.6	967,827	11.6	1.2	2.0
3	Vermont	67	2.1	140.0	2.5	5,939	1.3	1.9	1.1
4	Idaho	170	3.5	502.2	3.6	22,417	2.6	1.3	0.9

* Weighted probability of selection (number of phones, number of adults, and selection of telephone numbers by stratum)

TABLE 5: DISCREPANCY IN PERCENTAGE HISPANIC BETWEEN SAMPLE AND POPULATION DATA BY STATE, 1997

RANK	STATE	HISPANICS RACE=WHITE		DIFF S-P	RATIO S/P	HISPANICS ALL RACES SAMPLE		HISPANICS RACE=OTHER SAMPLE	
		SAMPLE %	POPULATION %			N	%	N	%
1	Texas	30.0	14.6	15.5	2.1	575.0	27.2	353	61.5
2	Nevada	17.6	12.3	5.3	1.4	208.0	9.0	105	59.9
3	Nebraska	5.6	5.2	0.5	1.1	77.0	2.5	36	57.2
4	New Mexico	31.3	11.4	19.9	2.8	661.0	39.0	359	55.8
5	Oregon	7.7	5.7	2.1	1.4	104.0	3.7	52	45.4
6	Wyoming	5.2	3.2	2.0	1.6	107.0	4.9	47	41.0
7	Michigan	15.0	15.3	-0.3	1.0	65.0	2.8	21	37.8
8	Idaho	5.2	2.6	2.6	2.0	184.0	4.5	77	37.4
9	South Carolina	27.4	28.2	-0.9	1.0	36.0	1.9	12	37.2
10	New Jersey	18.8	18.6	0.2	1.0	203.0	9.0	71	35.5
11	Indiana	8.6	8.5	0.1	1.0	53.0	2.8	19	34.9
12	Colorado	10.7	6.9	3.8	1.6	218.0	13.0	82	34.2
13	Wisconsin	6.7	6.7	0.0	1.0	37.0	1.8	13	33.3
14	Georgia	27.0	27.8	-0.8	1.0	51.0	2.4	16	32.3
15	Arizona	10.8	9.8	0.9	1.1	244.0	16.0	67	31.2
16	North Carolina	23.8	22.4	1.4	1.1	82.0	2.3	22	31.0
17	Missouri	12.5	11.6	0.9	1.1	32.0	1.8	12	30.0
18	Rhode Island	6.6	6.6	0.0	1.0	55.0	3.3	18	29.5
19	Massachusetts	8.8	8.9	-0.1	1.0	75.0	4.5	25	27.9
20	Oklahoma	13.3	15.1	-1.7	0.9	54.0	3.0	15	27.2
21	Utah	4.8	4.6	0.2	1.0	142.0	6.2	41	25.7
22	Hawaii	69.0	66.5	2.5	1.0	300.0	15.5	79	24.3
23	Maryland	25.8	30.1	-4.3	0.9	88.0	2.6	18	23.7
24	South Dakota	7.6	6.7	0.9	1.1	47.0	2.3	9	22.6
25	New Hampshire	2.5	1.7	0.8	1.5	20.0	1.3	4	22.2
26	Kentucky	7.1	7.2	-0.2	1.0	13.0	0.4	2	22.2
27	Connecticut	9.9	10.5	-0.6	0.9	132.0	6.4	31	21.9
28	Pennsylvania	9.8	10.5	-0.7	0.9	81.0	2.1	18	21.7
29	Louisiana	28.2	30.9	-2.7	0.9	70.0	4.5	15	20.7
30	Minnesota	5.2	5.4	-0.3	1.0	109.0	2.5	21	20.6
31	New York	21.7	22.0	-0.3	1.0	312.0	9.5	66	20.5
32	District of Columbia	68.3	63.4	4.9	1.1	41.0	3.0	7	20.0
33	Iowa	2.6	3.0	-0.4	0.9	64.0	2.0	12	19.5
34	Ohio	13.8	11.6	2.2	1.2	41.0	1.4	7	18.2
35	Kansas	8.4	7.8	0.6	1.1	95.0	5.1	17	18.0
36	Alabama	22.5	24.3	-1.8	0.9	48.0	2.1	7	15.5
37	Mississippi	30.8	33.2	-2.4	0.9	26.0	1.6	4	15.2
38	Montana	5.3	5.6	-0.4	0.9	44.0	2.8	6	14.8
39	Virginia	20.1	22.1	-2.0	0.9	123.0	4.2	19	14.1
40	North Dakota	4.3	4.6	-0.4	0.9	13.0	0.8	2	12.8
41	Delaware	18.3	19.5	-1.1	0.9	51.0	2.2	8	11.7
42	Tennessee	14.9	15.8	-0.9	0.9	47.0	1.5	5	11.6
43	Vermont	2.6	1.3	1.3	2.0	52.0	1.6	5	11.0
44	Alaska	18.9	21.5	-2.5	0.9	66.0	4.6	5	7.8
45	West Virginia	2.5	3.6	-1.1	0.7	40.0	1.7	2	6.7
46	Washington	9.4	9.9	-0.5	0.9	152.0	4.7	10	6.4
47	Florida	13.7	14.7	-1.0	0.9	476.0	15.0	24	4.3
48	Maine	1.4	1.3	0.2	1.1	17.0	1.1	1	3.1
49	Illinois	14.1	17.4	-3.3	0.8	231.0	9.8	1	0.4
50	Arkansas	13.6	14.9	-1.3	0.9	47.0	3.1	.	.
51	California	14.7	19.8	-5.1	0.7	969.0	29.3	.	.

* Weighted probability of selection (number of phones, number of adults, and selection of telephone numbers by stratum)

TABLE 6: DISCREPANCY BETWEEN WEIGHTED*
SAMPLE AND POPULATION BY AGE CATEGORY AND STATE, 1997

STATE	PERCENTAGE POINT DIFFERENCE					
	18-24	25-34	35-44	45-54	55-64	65+
Alabama	-2.3	-3.0	2.1	2.6	1.7	-1.1
Alaska	0.2	-3.6	0.4	2.0	0.5	0.5
Arizona	-2.4	-0.7	-0.2	-0.6	0.8	3.1
Arkansas	1.4	-1.8	0.6	1.8	0.5	-2.5
California	-0.3	-0.7	0.3	-0.3	0.8	0.2
Colorado	-0.1	-2.0	0.3	0.5	0.6	0.7
Connecticut	-1.7	1.6	3.1	0.4	-2.2	-1.3
Delaware	-2.5	0.3	1.2	-0.4	0.0	1.5
District of Columbia	-1.7	5.6	-0.6	-1.3	-0.3	-1.6
Florida	0.0	-0.4	-1.1	1.3	-0.9	1.2
Georgia	-6.4	2.2	5.4	-0.5	0.3	-1.0
Hawaii	-0.3	-1.5	1.9	0.6	-0.4	-0.3
Idaho	0.5	0.1	1.1	1.0	0.6	-3.3
Illinois	-0.3	1.9	1.4	-0.4	0.6	-3.2
Indiana	-3.4	1.8	1.6	2.6	0.5	-3.1
Iowa	-3.1	-0.1	1.2	1.9	1.3	-1.2
Kansas	-2.3	1.8	1.4	1.0	-0.2	-1.6
Kentucky	-2.7	-1.7	0.2	0.9	2.1	1.1
Louisiana	-0.4	-1.0	-1.1	1.8	0.8	-0.1
Maine	-4.5	0.7	1.7	4.6	0.8	-3.3
Maryland	-1.1	-1.4	1.5	0.6	0.4	0.0
Massachusetts	-3.6	5.0	2.5	-0.5	-0.6	-2.7
Michigan	0.0	1.6	2.2	-0.5	0.3	-3.6
Minnesota	-1.6	-0.6	2.6	1.5	-0.1	-1.8
Mississippi	-3.9	-1.4	1.8	2.7	2.0	-1.3
Missouri	-3.4	-0.2	1.8	1.4	1.8	-1.4
Montana	-0.8	-0.1	1.8	0.1	-0.3	-0.6
Nebraska	-3.7	-1.0	0.7	2.7	0.1	1.3
Nevada	0.7	2.6	-2.8	2.1	2.1	-4.7
New Hampshire	-3.6	-2.4	5.1	0.8	-0.3	0.4
New Jersey	-2.2	1.6	3.0	-0.3	-1.0	-1.1
New Mexico	-1.9	-2.0	0.9	1.8	0.6	0.6
New York	-0.5	1.2	2.0	2.0	-1.4	-3.3
North Carolina	-3.0	0.0	1.5	0.0	0.4	1.1
North Dakota	-2.0	-0.4	0.6	-0.5	0.6	1.6
Ohio	-3.1	-1.5	-1.4	-0.3	1.3	4.9
Oklahoma	-4.3	-2.5	-0.8	-1.5	-0.9	10.0
Oregon	0.9	1.5	-0.7	-0.4	0.3	-1.6
Pennsylvania	-2.0	0.5	2.8	1.0	0.9	-3.1
Rhode Island	-2.7	0.1	1.6	3.6	0.1	-2.7
South Carolina	-2.1	-0.5	-1.6	-0.3	1.6	3.0
South Dakota	-3.0	-2.0	4.3	1.2	-1.0	0.4
Tennessee	-1.8	-0.2	0.4	0.6	2.2	-1.2
Texas	0.7	0.7	0.7	-0.1	0.1	-2.1
Utah	5.0	-0.2	-1.5	-0.4	-0.5	-2.5
Vermont	-4.2	0.6	1.5	3.7	0.0	-1.6
Virginia	-2.3	0.5	2.2	1.8	0.2	-2.4
Washington	-0.1	0.7	1.4	2.5	-1.6	-2.9
West Virginia	-2.5	0.0	0.8	1.3	1.5	-1.1
Wisconsin	-2.1	2.5	1.4	1.5	0.2	-3.6
Wyoming	-0.1	-0.6	1.8	0.9	0.8	-2.7

* Weighted probability of selection (number of phones, number of adults, and selection of telephone numbers by stratum)

SECTION 3

OTHER VARIABLES

TABLE 7: PERCENT COMPLETED INTERVIEWS MISSING INCOME BY STATE, 1997

STATE	PERCENT*	Z-SCORE	N
Oklahoma	26.8	3.7	505
Arizona	24.9	3.3	475
Maryland	15.4	1.5	704
New York	14.5	1.3	493
Massachusetts	14.0	1.2	247
Tennessee	13.3	1.1	396
Connecticut	13.1	1.0	294
Rhode Island	12.7	1.0	234
Kansas	12.5	0.9	251
New Jersey	12.4	0.9	332
Delaware	11.1	0.7	284
Pennsylvania	10.9	0.6	394
Montana	10.9	0.6	197
North Carolina	10.5	0.5	380
Vermont	9.8	0.4	314
Washington	9.2	0.3	331
Kentucky	7.9	0.0	285
South Carolina	7.7	0.0	166
Arkansas	7.6	0.0	137
Florida	7.4	-0.1	258
Ohio	7.1	-0.1	226
Texas	7.1	-0.1	178
Virginia	7.1	-0.1	250
Maine	7.0	-0.1	119
New Hampshire	6.9	-0.1	105
West Virginia	6.1	-0.3	148
Nebraska	6.1	-0.3	164
Alabama	6.0	-0.3	130
Missouri	5.8	-0.4	108
Colorado	5.5	-0.4	100
Michigan	5.4	-0.4	139
New Mexico	5.1	-0.5	92
Illinois	5.0	-0.5	145
Indiana	4.8	-0.6	115
Georgia	4.7	-0.6	109
Louisiana	4.7	-0.6	78
Wisconsin	4.4	-0.6	99
Mississippi	4.1	-0.7	66
Iowa	4.1	-0.7	148
Oregon	4.1	-0.7	136
South Dakota	4.0	-0.7	89
Wyoming	3.9	-0.7	93
Idaho	3.7	-0.8	184
Hawaii	3.7	-0.8	80
Utah	3.5	-0.8	101
Nevada	3.3	-0.8	83
Alaska	3.2	-0.9	49
North Dakota	2.9	-0.9	52
California	2.6	-1.0	106
Minnesota	2.3	-1.0	110
Puerto Rico	2.1	-1.1	47
District of Columbia	1.4	-1.2	21

* Weighted probability of selection (number of phones, number of adults, and selection of telephone numbers by stratum)

TABLE 8: PERCENT COMPLETED INTERVIEWS MISSING AGE BY STATE, 1997

STATE	PERCENT*	Z-SCORE	N
New Jersey	1.7	3.0	46
Connecticut	1.6	2.6	35
Massachusetts	1.5	2.5	27
Rhode Island	1.5	2.4	27
Maryland	1.3	2.0	60
Arkansas	1.0	1.2	18
Vermont	0.9	1.0	29
Virginia	0.9	0.9	31
Alaska	0.8	0.7	12
North Carolina	0.7	0.5	26
Kansas	0.6	0.4	13
Alabama	0.6	0.4	14
Mississippi	0.6	0.3	10
West Virginia	0.6	0.3	15
Texas	0.6	0.3	15
South Carolina	0.6	0.2	12
New York	0.5	0.1	18
New Hampshire	0.5	0.1	8
Pennsylvania	0.5	0.1	19
Louisiana	0.5	0.0	8
Ohio	0.4	-0.1	14
Tennessee	0.4	-0.1	13
Idaho	0.4	-0.2	21
Oklahoma	0.4	-0.2	8
Nevada	0.4	-0.2	10
Oregon	0.4	-0.2	13
Colorado	0.4	-0.3	7
Indiana	0.4	-0.3	9
Nebraska	0.4	-0.3	10
Michigan	0.4	-0.3	9
District of Columbia	0.3	-0.4	5
South Dakota	0.3	-0.4	7
Iowa	0.3	-0.4	11
Wyoming	0.3	-0.5	7
Utah	0.3	-0.5	8
New Mexico	0.3	-0.5	5
Missouri	0.3	-0.5	5
Wisconsin	0.3	-0.5	6
Arizona	0.3	-0.5	5
Georgia	0.3	-0.6	6
Washington	0.3	-0.6	9
Hawaii	0.2	-0.7	4
Kentucky	0.1	-0.8	5
Delaware	0.1	-0.9	3
Montana	0.1	-0.9	2
North Dakota	0.1	-0.9	2
Maine	0.1	-1.0	1
Illinois	0.0	-1.1	1
California	0.0	-1.2	0
Florida	0.0	-1.2	0
Minnesota	0.0	-1.2	0
Puerto Rico	0.0	-1.2	0

* Weighted probability of selection (number of phones, number of adults, and selection of telephone numbers by stratum)

TABLE 9: PERCENT COMPLETED INTERVIEWS MISSING RACE BY STATE, 1997

STATE	PERCENT*	Z-SCORE	N
New Jersey	1.4	3.3	37
Connecticut	1.1	2.2	24
Washington	1.0	1.9	35
Massachusetts	0.9	1.7	16
New York	0.9	1.6	30
Alaska	0.8	1.5	13
Arkansas	0.8	1.5	15
South Carolina	0.8	1.3	17
Virginia	0.7	0.9	24
Vermont	0.7	0.9	21
Michigan	0.6	0.7	16
New Mexico	0.6	0.5	10
Wisconsin	0.5	0.3	11
District of Columbia	0.5	0.2	7
Maryland	0.5	0.2	21
Florida	0.5	0.2	16
Puerto Rico	0.4	0.1	10
North Carolina	0.4	0.1	16
Texas	0.4	0.1	11
Rhode Island	0.4	0.1	8
Pennsylvania	0.4	0.0	15
Maine	0.4	0.0	7
Nebraska	0.4	0.0	11
Nevada	0.4	0.0	10
Delaware	0.4	0.0	10
Utah	0.4	-0.1	11
Oregon	0.3	-0.3	11
Colorado	0.3	-0.3	6
Hawaii	0.3	-0.3	7
Alabama	0.3	-0.3	7
Montana	0.3	-0.4	5
New Hampshire	0.3	-0.5	4
Ohio	0.3	-0.5	8
Kansas	0.3	-0.5	5
Wyoming	0.2	-0.5	6
Tennessee	0.2	-0.6	7
Idaho	0.2	-0.6	11
Arizona	0.2	-0.7	4
Minnesota	0.2	-0.7	10
Louisiana	0.2	-0.8	3
Georgia	0.2	-0.8	4
Indiana	0.2	-0.8	4
West Virginia	0.2	-0.8	4
Missouri	0.2	-0.8	3
Iowa	0.1	-0.9	5
Kentucky	0.1	-1.0	4
Illinois	0.1	-1.0	3
Mississippi	0.1	-1.2	1
North Dakota	0.1	-1.2	1
Oklahoma	0.1	-1.2	1
California	0.0	-1.4	0
South Dakota	0.0	-1.4	0

* Weighted probability of selection (number of phones, number of adults, and selection of telephone numbers by stratum)

TABLE 10: PERCENT COMPLETED INTERVIEWS MISSING NUMBER OF TELEPHONES
BY STATE, 1997

STATE	PERCENT*	Z-SCORE	N
Texas	3.2	4.1	16
Nevada	1.9	2.2	9
Tennessee	1.9	2.1	5
Michigan	1.6	1.7	6
South Dakota	1.4	1.5	2
Rhode Island	1.4	1.4	3
Connecticut	1.2	1.1	5
New York	1.1	1.0	5
District of Columbia	1.0	0.9	2
New Hampshire	1.0	0.8	2
New Mexico	1.0	0.8	2
Mississippi	0.8	0.5	1
West Virginia	0.8	0.5	1
New Jersey	0.7	0.3	5
Washington	0.5	0.1	3
Florida	0.5	0.0	3
Missouri	0.4	0.0	1
Nebraska	0.4	0.0	1
Maryland	0.4	-0.1	3
Idaho	0.4	-0.1	2
Alabama	0.4	-0.1	1
Alaska	0.4	-0.1	1
Wisconsin	0.4	-0.1	1
Pennsylvania	0.4	-0.1	2
Colorado	0.4	-0.1	1
Delaware	0.3	-0.3	1
Illinois	0.2	-0.3	1
Arizona	0.0	-0.7	0
Arkansas	0.0	-0.7	0
California	0.0	-0.7	0
Georgia	0.0	-0.7	0
Hawaii	0.0	-0.7	0
Indiana	0.0	-0.7	0
Iowa	0.0	-0.7	0
Kansas	0.0	-0.7	0
Kentucky	0.0	-0.7	0
Louisiana	0.0	-0.7	0
Maine	0.0	-0.7	0
Massachusetts	0.0	-0.7	0
Minnesota	0.0	-0.7	0
Montana	0.0	-0.7	0
North Carolina	0.0	-0.7	0
North Dakota	0.0	-0.7	0
Ohio	0.0	-0.7	0
Oklahoma	0.0	-0.7	0
Oregon	0.0	-0.7	0
Puerto Rico	0.0	-0.7	0
South Carolina	0.0	-0.7	0
Utah	0.0	-0.7	0
Vermont	0.0	-0.7	0
Virginia	0.0	-0.7	0
Wyoming	0.0	-0.7	0

* Weighted probability of selection (number of phones, number of adults, and selection of telephone numbers by stratum)

TABLE 11: PERCENT COMPLETED INTERVIEWS MISSING WEIGHT BY STATE, 1997

STATE	PERCENT*	Z-SCORE	N
Kansas	4.0	2.2	80
Massachusetts	4.0	2.2	70
Washington	3.7	1.9	133
North Carolina	3.6	1.8	131
Connecticut	3.4	1.7	77
Maryland	3.4	1.6	156
Arkansas	3.3	1.6	60
New Jersey	3.3	1.5	88
Vermont	2.9	1.2	94
Pennsylvania	2.6	0.8	93
Ohio	2.5	0.7	80
Oklahoma	2.4	0.7	46
New Hampshire	2.4	0.6	36
Louisiana	2.2	0.4	37
Tennessee	2.2	0.4	66
Delaware	2.2	0.4	56
Alaska	2.1	0.3	32
Texas	2.0	0.2	49
Nebraska	1.9	0.1	52
Rhode Island	1.9	0.1	35
Virginia	1.9	0.1	66
Kentucky	1.8	0.0	66
Maine	1.8	0.0	31
New York	1.8	0.0	61
Michigan	1.7	-0.1	44
Montana	1.7	-0.1	30
West Virginia	1.6	-0.2	39
Alabama	1.6	-0.2	34
Illinois	1.5	-0.4	42
South Carolina	1.4	-0.4	31
Indiana	1.4	-0.4	33
Florida	1.3	-0.6	44
Oregon	1.2	-0.6	41
Missouri	1.2	-0.6	22
South Dakota	1.2	-0.6	26
Wyoming	1.2	-0.7	28
Nevada	1.2	-0.7	29
New Mexico	1.1	-0.7	20
Idaho	1.1	-0.7	54
Utah	1.1	-0.7	31
Mississippi	1.1	-0.8	17
Minnesota	1.0	-0.8	50
Georgia	1.0	-0.8	23
Wisconsin	1.0	-0.8	22
Arizona	0.9	-0.9	18
Iowa	0.9	-0.9	33
Colorado	0.8	-1.1	14
Hawaii	0.7	-1.1	16
North Dakota	0.7	-1.1	13
District of Columbia	0.4	-1.4	6
California	0.3	-1.5	12
Puerto Rico	0.0	-1.8	0

* Weighted probability of selection (number of phones, number of adults, and selection of telephone numbers by stratum)

TABLE 12: PERCENT COMPLETED INTERVIEWS MISSING HIV TEST BY STATE, 1997

STATE	PERCENT*	Z-SCORE	N
Massachusetts	7.4	3.7	108
New Jersey	6.0	2.8	130
Rhode Island	5.2	2.3	76
Tennessee	4.5	1.9	107
Connecticut	3.5	1.2	63
Kansas	4.0	1.6	63
Pennsylvania	3.1	1.0	89
New Hampshire	3.1	1.0	38
Vermont	3.0	1.0	79
Nebraska	2.4	0.6	49
North Carolina	2.0	0.3	57
Kentucky	1.8	0.2	51
Alaska	1.8	0.2	25
Arkansas	1.8	0.2	25
Alabama	1.6	0.1	28
Delaware	1.5	0.0	30
Colorado	1.5	0.0	22
Iowa	1.4	-0.1	37
Maryland	1.3	-0.1	48
Arizona	1.2	-0.2	17
New Mexico	1.2	-0.2	17
Michigan	1.1	-0.2	24
Mississippi	1.0	-0.3	13
Missouri	1.0	-0.3	14
Maine	0.9	-0.3	13
Texas	0.9	-0.3	20
South Carolina	0.8	-0.4	14
Virginia	0.8	-0.4	24
Georgia	0.8	-0.4	15
North Dakota	0.7	-0.4	10
South Dakota	0.7	-0.5	11
Ohio	0.6	-0.5	15
West Virginia	0.6	-0.5	11
New York	0.6	-0.6	16
Florida	0.5	-0.6	13
Utah	0.5	-0.6	12
Wisconsin	0.5	-0.6	9
Washington	0.5	-0.6	14
Minnesota	0.4	-0.6	17
Montana	0.4	-0.6	6
District of Columbia	0.3	-0.7	4
Indiana	0.3	-0.7	5
Nevada	0.2	-0.8	5
Louisiana	0.2	-0.8	3
Hawaii	0.2	-0.8	3
Illinois	0.2	-0.8	4
Oklahoma	0.2	-0.8	2
Oregon	0.2	-0.8	4
Wyoming	0.1	-0.8	2
Idaho	0.1	-0.9	3
Puerto Rico	0.0	-0.9	0

* Weighted probability of selection (number of phones, number of adults, and selection of telephone numbers by stratum)

TABLE 13: PERCENT COMPLETED INTERVIEWS MISSING CHANCES OF GETTING HIV
BY STATE, 1997

STATE	PERCENT*	Z-SCORE	N
Massachusetts	7.4	3.7	108
New Jersey	6.0	2.9	130
Rhode Island	5.0	2.2	73
Tennessee	4.5	1.9	107
Kansas	4.1	1.6	64
Connecticut	3.5	1.2	63
New Hampshire	3.3	1.1	40
Pennsylvania	3.2	1.1	91
Vermont	2.9	0.9	76
Nebraska	2.5	0.6	51
North Carolina	1.9	0.3	56
Kentucky	1.8	0.2	50
Arkansas	1.8	0.2	25
Colorado	1.5	0.0	23
Delaware	1.5	0.0	30
Alaska	1.5	0.0	21
Alabama	1.5	0.0	26
Iowa	1.4	-0.1	38
New Mexico	1.4	-0.1	20
Michigan	1.3	-0.1	28
Arizona	1.3	-0.1	18
Maryland	1.2	-0.2	44
Texas	1.1	-0.3	23
Mississippi	1.0	-0.3	13
Georgia	1.0	-0.3	20
Missouri	1.0	-0.3	14
South Carolina	1.0	-0.3	16
Virginia	0.9	-0.4	26
North Dakota	0.7	-0.5	10
Maine	0.7	-0.5	10
West Virginia	0.7	-0.5	13
South Dakota	0.7	-0.5	11
New York	0.6	-0.6	17
Wisconsin	0.5	-0.6	10
Florida	0.5	-0.6	13
Ohio	0.5	-0.6	12
Illinois	0.5	-0.6	11
Montana	0.4	-0.7	6
Utah	0.4	-0.7	10
Washington	0.4	-0.7	12
District of Columbia	0.4	-0.7	5
Minnesota	0.4	-0.7	15
Indiana	0.3	-0.7	6
Louisiana	0.3	-0.7	4
Oklahoma	0.2	-0.8	3
Nevada	0.2	-0.8	5
Hawaii	0.2	-0.8	4
Idaho	0.1	-0.9	5
Oregon	0.1	-0.9	3
Puerto Rico	0.1	-0.9	2
Wyoming	0.1	-0.9	2

* Weighted probability of selection (number of phones, number of adults, and selection of telephone numbers by stratum)

TABLE 14: PERCENT COMPLETED INTERVIEWS MISSING PAP SMEAR BY STATE, 1997

STATE	PERCENT*	Z-SCORE	N
Massachusetts	4.6	3.5	48
New Hampshire	4.1	3.0	37
New Jersey	3.9	2.9	63
Pennsylvania	2.8	1.8	60
Rhode Island	2.5	1.5	27
Connecticut	2.4	1.4	33
Vermont	2.2	1.2	39
Kansas	1.8	0.9	22
North Carolina	1.3	0.4	28
Iowa	1.2	0.3	26
Nebraska	1.2	0.3	20
Tennessee	1.2	0.3	23
Arkansas	1.2	0.3	13
Alaska	1.1	0.2	9
Arizona	1.1	0.2	11
New Mexico	1.0	0.1	11
Colorado	0.9	0.0	9
Michigan	0.8	-0.1	12
Kentucky	0.8	-0.1	18
Maine	0.7	-0.1	7
Maryland	0.7	-0.1	19
South Dakota	0.6	-0.2	8
Wisconsin	0.6	-0.2	8
Virginia	0.6	-0.2	13
Missouri	0.6	-0.3	7
Mississippi	0.6	-0.3	6
West Virginia	0.5	-0.3	8
Alabama	0.5	-0.3	7
Utah	0.5	-0.4	8
Delaware	0.5	-0.4	7
Georgia	0.4	-0.4	6
South Carolina	0.4	-0.5	5
Florida	0.3	-0.5	7
District of Columbia	0.3	-0.5	3
Indiana	0.3	-0.5	4
Ohio	0.3	-0.6	5
Washington	0.2	-0.6	5
Minnesota	0.2	-0.7	4
Illinois	0.1	-0.7	2
Louisiana	0.1	-0.7	1
Montana	0.1	-0.7	1
Oklahoma	0.1	-0.7	1
Hawaii	0.1	-0.7	1
Nevada	0.1	-0.8	1
Wyoming	0.1	-0.8	1
Oregon	0.1	-0.8	1
New York	0.0	-0.8	1
Idaho	0.0	-0.8	1
California	0.0	-0.8	0
North Dakota	0.0	-0.8	0
Puerto Rico	0.0	-0.8	0
Texas	0.0	-0.8	0

* Weighted probability of selection (number of phones, number of adults, and selection of telephone numbers by stratum)

TABLE 15: PERCENT COMPLETED INTERVIEWS MISSING PROFESSIONAL BREAST EXAM
BY STATE, 1997

STATE	PERCENT*	Z-SCORE	N
Massachusetts	4.1	3.4	43
New Hampshire	4.0	3.2	36
New Jersey	3.6	2.9	58
Pennsylvania	2.6	1.9	57
Connecticut	2.1	1.4	29
Rhode Island	2.1	1.3	23
Vermont	1.9	1.1	34
Kansas	1.6	0.9	20
North Carolina	1.3	0.5	28
Nebraska	1.1	0.4	19
Arizona	1.1	0.3	11
Tennessee	1.1	0.3	21
Iowa	1.1	0.3	23
Arkansas	1.1	0.3	12
Alaska	0.8	0.0	7
Colorado	0.8	0.0	8
New Mexico	0.8	0.0	8
Kentucky	0.7	-0.1	17
Maine	0.7	-0.1	7
Michigan	0.7	-0.1	10
Maryland	0.7	-0.2	17
West Virginia	0.6	-0.2	9
Mississippi	0.6	-0.2	6
Wisconsin	0.6	-0.2	7
Missouri	0.5	-0.3	6
Alabama	0.5	-0.3	7
Utah	0.5	-0.3	8
South Dakota	0.5	-0.3	6
Delaware	0.5	-0.4	7
Georgia	0.4	-0.4	6
Virginia	0.4	-0.4	9
South Carolina	0.4	-0.4	5
Florida	0.3	-0.5	7
Texas	0.3	-0.5	4
Indiana	0.2	-0.6	3
Ohio	0.2	-0.6	4
Louisiana	0.2	-0.6	2
Washington	0.2	-0.6	4
Minnesota	0.2	-0.7	4
District of Columbia	0.1	-0.7	1
Montana	0.1	-0.7	1
Oklahoma	0.1	-0.7	1
Hawaii	0.1	-0.7	1
Illinois	0.1	-0.8	1
Oregon	0.1	-0.8	1
California	0.0	-0.8	0
Idaho	0.0	-0.8	0
Nevada	0.0	-0.8	0
New York	0.0	-0.8	0
North Dakota	0.0	-0.8	0
Puerto Rico	0.0	-0.8	0
Wyoming	0.0	-0.8	0

* Weighted probability of selection (number of phones, number of adults, and selection of telephone numbers by stratum)

TABLE 16: PERCENT COMPLETED INTERVIEWS MISSING MAMMOGRAM
BY STATE, 1997

STATE	PERCENT*	Z-SCORE	N
New Hampshire	4.0	3.7	36
Massachusetts	3.3	3.0	35
New Jersey	3.2	2.8	51
Pennsylvania	2.1	1.7	46
Rhode Island	1.9	1.4	21
Connecticut	1.8	1.2	24
Vermont	1.6	1.1	29
North Carolina	1.2	0.6	26
Kansas	1.1	0.5	14
Arizona	1.0	0.4	10
Nebraska	1.0	0.3	16
Iowa	0.9	0.3	20
Tennessee	0.9	0.3	18
Arkansas	0.9	0.3	10
Alaska	0.8	0.2	7
New Mexico	0.8	0.1	8
Kentucky	0.7	0.1	17
Maine	0.6	0.0	6
West Virginia	0.6	-0.1	9
Michigan	0.6	-0.1	9
Colorado	0.6	-0.1	6
Maryland	0.6	-0.1	15
Missouri	0.5	-0.2	6
Alabama	0.5	-0.2	7
South Dakota	0.4	-0.3	5
Virginia	0.3	-0.4	7
Delaware	0.3	-0.4	5
Wisconsin	0.3	-0.4	4
Utah	0.3	-0.4	5
Mississippi	0.3	-0.4	3
Indiana	0.2	-0.5	3
South Carolina	0.2	-0.5	3
Georgia	0.2	-0.5	3
Ohio	0.2	-0.6	3
Florida	0.1	-0.6	3
District of Columbia	0.1	-0.6	1
Louisiana	0.1	-0.6	1
Washington	0.1	-0.6	2
Minnesota	0.1	-0.7	2
Texas	0.1	-0.7	1
Illinois	0.1	-0.7	1
Oregon	0.1	-0.7	1
California	0.0	-0.8	0
Hawaii	0.0	-0.8	0
Idaho	0.0	-0.8	0
Montana	0.0	-0.8	0
Nevada	0.0	-0.8	0
New York	0.0	-0.8	0
North Dakota	0.0	-0.8	0
Oklahoma	0.0	-0.8	0
Puerto Rico	0.0	-0.8	0
Wyoming	0.0	-0.8	0

* Weighted probability of selection (number of phones, number of adults, and selection of telephone numbers by stratum)

TABLE 17: PERCENT COMPLETED INTERVIEWS MISSING PNEUMONIA VACCINATION
BY STATE, 1997

STATE	PERCENT*	Z-SCORE	N
Massachusetts	5.8	4.4	103
New Jersey	3.8	2.6	100
Rhode Island	3.4	2.3	63
New Hampshire	3.0	2.0	46
Pennsylvania	2.5	1.5	90
Connecticut	2.4	1.4	54
Vermont	1.8	0.9	57
Kansas	1.4	0.5	28
North Carolina	1.3	0.5	49
Texas	1.2	0.4	31
Iowa	1.2	0.3	42
Nebraska	0.9	0.1	25
Arkansas	0.9	0.1	16
Colorado	0.9	0.1	16
Tennessee	0.8	0.0	25
Kentucky	0.8	0.0	29
New Mexico	0.8	0.0	14
Alaska	0.7	-0.1	11
Arizona	0.7	-0.1	13
Mississippi	0.6	-0.2	10
Maryland	0.6	-0.2	28
Maine	0.6	-0.2	10
Missouri	0.5	-0.2	10
Delaware	0.5	-0.3	13
Alabama	0.5	-0.3	11
Michigan	0.5	-0.3	13
South Dakota	0.5	-0.3	11
Georgia	0.5	-0.3	11
Virginia	0.5	-0.3	16
West Virginia	0.4	-0.3	10
Wisconsin	0.4	-0.4	9
Utah	0.3	-0.4	10
Florida	0.2	-0.5	7
District of Columbia	0.2	-0.5	3
Ohio	0.2	-0.6	5
Washington	0.1	-0.6	5
South Carolina	0.1	-0.6	2
Indiana	0.1	-0.6	2
Nevada	0.1	-0.6	2
Oklahoma	0.1	-0.7	1
Oregon	0.0	-0.7	1
Minnesota	0.0	-0.7	1
California	0.0	-0.7	0
Hawaii	0.0	-0.7	0
Idaho	0.0	-0.7	0
Illinois	0.0	-0.7	0
Louisiana	0.0	-0.7	0
Montana	0.0	-0.7	0
New York	0.0	-0.7	0
North Dakota	0.0	-0.7	0
Puerto Rico	0.0	-0.7	0
Wyoming	0.0	-0.7	0

* Weighted probability of selection (number of phones, number of adults, and selection of telephone numbers by stratum)

TABLE 18: PERCENT COMPLETED INTERVIEWS MISSING INFLUENZA IMMUNIZATION
BY STATE, 1997

STATE	PERCENT*	Z-SCORE	N
Massachusetts	5.8	4.8	103
New Jersey	3.5	2.6	94
New Hampshire	3.2	2.3	48
Connecticut	2.4	1.6	55
Pennsylvania	2.3	1.5	84
Vermont	1.7	0.9	54
Kansas	1.4	0.6	28
North Carolina	1.3	0.6	49
Iowa	1.2	0.4	42
Arkansas	0.9	0.2	16
Nebraska	0.9	0.2	24
Colorado	0.8	0.1	15
Kentucky	0.8	0.1	29
Rhode Island	0.8	0.1	14
Alaska	0.8	0.0	12
New Mexico	0.8	0.0	14
Tennessee	0.8	0.0	23
Arizona	0.7	0.0	13
Mississippi	0.6	-0.1	10
Missouri	0.6	-0.1	11
Maryland	0.6	-0.1	27
Maine	0.6	-0.1	10
Alabama	0.6	-0.2	12
Delaware	0.5	-0.2	13
Michigan	0.5	-0.2	13
South Dakota	0.5	-0.2	11
Virginia	0.5	-0.2	17
Georgia	0.5	-0.2	11
Wisconsin	0.4	-0.3	9
West Virginia	0.4	-0.3	9
Utah	0.3	-0.4	10
Florida	0.2	-0.5	7
District of Columbia	0.2	-0.5	3
Ohio	0.2	-0.5	5
Washington	0.1	-0.6	5
Texas	0.1	-0.6	3
South Carolina	0.1	-0.6	2
Indiana	0.1	-0.6	2
Nevada	0.1	-0.6	2
Oklahoma	0.1	-0.6	1
Oregon	0.0	-0.7	1
Minnesota	0.0	-0.7	1
California	0.0	-0.7	0
Hawaii	0.0	-0.7	0
Idaho	0.0	-0.7	0
Illinois	0.0	-0.7	0
Louisiana	0.0	-0.7	0
Montana	0.0	-0.7	0
New York	0.0	-0.7	0
North Dakota	0.0	-0.7	0
Puerto Rico	0.0	-0.7	0
Wyoming	0.0	-0.7	0

* Weighted probability of selection (number of phones, number of adults, and selection of telephone numbers by stratum)

TABLE 19: PERCENT COMPLETED INTERVIEWS MISSING ALCOHOL CONSUMPTION
BY STATE, 1997

STATE	PERCENT*	Z-SCORE	N
Nebraska	0.3	3.7	8
Massachusetts	0.2	1.7	3
Tennessee	0.2	1.7	5
Arkansas	0.2	1.7	3
Texas	0.2	1.5	4
New Jersey	0.2	1.4	4
Pennsylvania	0.1	1.2	5
South Dakota	0.1	1.2	3
Connecticut	0.1	1.1	3
District of Columbia	0.1	1.1	2
North Carolina	0.1	0.8	4
Colorado	0.1	0.8	2
Kansas	0.1	0.6	2
South Carolina	0.1	0.5	2
New York	0.1	0.4	3
Indiana	0.1	0.4	2
Washington	0.1	0.4	3
Maryland	0.1	0.1	3
Alaska	0.1	0.1	1
Mississippi	0.1	0.0	1
Vermont	0.1	0.0	2
Louisiana	0.1	0.0	1
Maine	0.1	0.0	1
Virginia	0.1	-0.1	2
New Mexico	0.1	-0.1	1
North Dakota	0.1	-0.1	1
Rhode Island	0.1	-0.1	1
Alabama	0.0	-0.2	1
Michigan	0.0	-0.3	1
Oregon	0.0	-0.5	1
Florida	0.0	-0.5	1
Iowa	0.0	-0.5	1
Kentucky	0.0	-0.5	1
Idaho	0.0	-0.6	1
Arizona	0.0	-0.9	0
California	0.0	-0.9	0
Delaware	0.0	-0.9	0
Georgia	0.0	-0.9	0
Hawaii	0.0	-0.9	0
Illinois	0.0	-0.9	0
Minnesota	0.0	-0.9	0
Missouri	0.0	-0.9	0
Montana	0.0	-0.9	0
Nevada	0.0	-0.9	0
New Hampshire	0.0	-0.9	0
Ohio	0.0	-0.9	0
Oklahoma	0.0	-0.9	0
Puerto Rico	0.0	-0.9	0
Utah	0.0	-0.9	0
West Virginia	0.0	-0.9	0
Wisconsin	0.0	-0.9	0
Wyoming	0.0	-0.9	0

* Weighted probability of selection (number of phones, number of adults, and selection of telephone numbers by stratum)

TABLE 20: PERCENT COMPLETED INTERVIEWS MISSING SEAT BELT USE BY STATE, 1997

STATE	PERCENT*	Z-SCORE	N
Arkansas	2.6	7.0	47
Nebraska	0.2	0.3	6
Ohio	0.2	0.2	6
New Jersey	0.2	0.2	5
Iowa	0.2	0.2	6
Pennsylvania	0.1	0.1	5
North Carolina	0.1	0.1	5
Wisconsin	0.1	0.1	3
District of Columbia	0.1	0.1	2
Idaho	0.1	0.0	6
Maine	0.1	0.0	2
Missouri	0.1	0.0	2
Alabama	0.1	0.0	2
South Dakota	0.1	0.0	2
Connecticut	0.1	0.0	2
Indiana	0.1	-0.1	2
Wyoming	0.1	-0.1	2
Texas	0.1	-0.1	2
Tennessee	0.1	-0.1	2
Vermont	0.1	-0.1	2
North Dakota	0.1	-0.1	1
Washington	0.1	-0.1	2
Arizona	0.1	-0.1	1
South Carolina	0.0	-0.2	1
Georgia	0.0	-0.2	1
West Virginia	0.0	-0.2	1
Nevada	0.0	-0.2	1
Michigan	0.0	-0.2	1
Oregon	0.0	-0.2	1
New York	0.0	-0.2	1
Kentucky	0.0	-0.2	1
Virginia	0.0	-0.2	1
Maryland	0.0	-0.2	1
Alaska	0.0	-0.3	0
California	0.0	-0.3	0
Colorado	0.0	-0.3	0
Delaware	0.0	-0.3	0
Florida	0.0	-0.3	0
Hawaii	0.0	-0.3	0
Illinois	0.0	-0.3	0
Kansas	0.0	-0.3	0
Louisiana	0.0	-0.3	0
Massachusetts	0.0	-0.3	0
Minnesota	0.0	-0.3	0
Mississippi	0.0	-0.3	0
Montana	0.0	-0.3	0
New Hampshire	0.0	-0.3	0
New Mexico	0.0	-0.3	0
Oklahoma	0.0	-0.3	0
Puerto Rico	0.0	-0.3	0
Rhode Island	0.0	-0.3	0
Utah	0.0	-0.3	0

* Weighted probability of selection (number of phones, number of adults, and selection of telephone numbers by stratum)

TABLE 21: PERCENT COMPLETED INTERVIEWS MISSING SMOKE DETECTOR BY STATE, 1997

STATE	PERCENT*	Z-SCORE	N
Texas	3.1	7.0	77
Arkansas	0.3	0.4	5
North Carolina	0.2	0.3	8
New Mexico	0.2	0.2	3
Nebraska	0.1	0.1	4
Pennsylvania	0.1	0.1	5
District of Columbia	0.1	0.1	2
Maryland	0.1	0.0	5
Connecticut	0.1	0.0	2
Nevada	0.1	0.0	2
New Jersey	0.1	-0.1	2
Alaska	0.1	-0.1	1
Oregon	0.1	-0.1	2
Maine	0.1	-0.1	1
Rhode Island	0.1	-0.1	1
Kansas	0.1	-0.1	1
South Carolina	0.0	-0.1	1
South Dakota	0.0	-0.1	1
Indiana	0.0	-0.1	1
Michigan	0.0	-0.1	1
Utah	0.0	-0.1	1
Tennessee	0.0	-0.2	1
Iowa	0.0	-0.2	1
Alabama	0.0	-0.2	0
Arizona	0.0	-0.2	0
California	0.0	-0.2	0
Colorado	0.0	-0.2	0
Delaware	0.0	-0.2	0
Florida	0.0	-0.2	0
Georgia	0.0	-0.2	0
Hawaii	0.0	-0.2	0
Idaho	0.0	-0.2	0
Illinois	0.0	-0.2	0
Kentucky	0.0	-0.2	0
Louisiana	0.0	-0.2	0
Massachusetts	0.0	-0.2	0
Minnesota	0.0	-0.2	0
Mississippi	0.0	-0.2	0
Missouri	0.0	-0.2	0
Montana	0.0	-0.2	0
New Hampshire	0.0	-0.2	0
New York	0.0	-0.2	0
North Dakota	0.0	-0.2	0
Ohio	0.0	-0.2	0
Oklahoma	0.0	-0.2	0
Puerto Rico	0.0	-0.2	0
Vermont	0.0	-0.2	0
Virginia	0.0	-0.2	0
Washington	0.0	-0.2	0
West Virginia	0.0	-0.2	0
Wisconsin	0.0	-0.2	0
Wyoming	0.0	-0.2	0

* Weighted probability of selection (number of phones, number of adults, and selection of telephone numbers by stratum)

TABLE 22: PERCENT COMPLETED INTERVIEWS MISSING SIGMOIDSCOPY BY STATE, 1997

STATE	PERCENT*	Z-SCORE	N
Massachusetts	7.0	4.1	69
New Hampshire	4.4	2.3	41
Rhode Island	4.0	2.0	45
New Jersey	3.9	1.9	63
Pennsylvania	3.7	1.8	83
Maryland	3.2	1.4	87
Connecticut	3.0	1.3	41
Vermont	2.7	1.0	53
Kansas	2.3	0.7	27
North Carolina	2.1	0.7	47
Arkansas	2.1	0.6	24
Iowa	1.8	0.4	41
Tennessee	1.4	0.1	25
South Carolina	1.4	0.1	18
Alaska	1.3	0.1	12
Michigan	1.3	0.0	19
Wisconsin	1.3	0.0	17
Nebraska	1.2	0.0	21
New Mexico	1.1	-0.1	12
Missouri	1.1	-0.1	12
District of Columbia	1.0	-0.2	8
Colorado	1.0	-0.2	11
Alabama	0.9	-0.2	12
Kentucky	0.9	-0.3	20
Maine	0.8	-0.3	9
Florida	0.8	-0.3	19
Arizona	0.8	-0.3	10
Texas	0.8	-0.3	11
South Dakota	0.7	-0.4	10
Georgia	0.7	-0.4	9
Delaware	0.7	-0.4	11
Utah	0.6	-0.4	10
West Virginia	0.6	-0.5	9
Virginia	0.5	-0.5	11
Indiana	0.5	-0.5	7
Mississippi	0.4	-0.6	4
Washington	0.3	-0.6	7
Hawaii	0.3	-0.7	4
Nevada	0.3	-0.7	4
Ohio	0.2	-0.7	5
Louisiana	0.2	-0.7	2
Minnesota	0.1	-0.8	4
New York	0.1	-0.8	2
North Dakota	0.1	-0.8	1
Oklahoma	0.1	-0.8	1
Oregon	0.0	-0.8	1
Idaho	0.0	-0.9	1
California	0.0	-0.9	0
Illinois	0.0	-0.9	0
Montana	0.0	-0.9	0
Puerto Rico	0.0	-0.9	0
Wyoming	0.0	-0.9	0

* Weighted probability of selection (number of phones, number of adults, and selection of telephone numbers by stratum)