



**2015**

**Behavioral Risk Factor Surveillance System**

**Asthma Call-Back Survey**

**Summary Data Quality Report**



**National  
Asthma  
Control  
Program**

Version 1.0.0  
5/23/2018

## ACKNOWLEDGEMENT

The Asthma Call-Back Survey (ACBS) is funded by the National Asthma Control Program (NACP) in the Asthma and Climate Health Branch of the National Center for Environmental Health (NCEH). The ACBS is jointly administered with the National Center for Chronic Disease Prevention and Health Promotion (NCCDPHP), Division of Population Health (DPH).

NCEH and NCCDPHP greatly appreciate the efforts of the BRFSS staff in each ACBS participating state.

Josephine Malilay, Ph.D.  
Branch Chief  
Asthma and Climate Health Branch  
Division of Environmental Health Science and Practice  
National Center for Environmental Health  
Centers for Disease Control and Prevention  
4770 Buford Hwy, NE  
Mailstop F-60  
Atlanta, GA 30341

Phone: (770) 488-3465  
E-mail: [jym7@cdc.gov](mailto:jym7@cdc.gov)

Machell G. Town, Ph.D.  
Branch Chief  
Population Health Surveillance Branch  
Division of Population Health  
National Center for Chronic Disease Prevention and Health Promotion  
Centers for Disease Control and Prevention  
1600 Clifton Road NE  
Mail Stop E97  
Atlanta, GA 30333 USA

Phone: (404) 488-4681  
E-mail: [mpt2@cdc.gov](mailto:mpt2@cdc.gov)

## 2015 Asthma Call-Back Survey (ACBS) Summary Data Quality Report

### Introduction

Procedures for interview disposition and response rates for the Behavior Risk Factor Surveillance System (BRFSS) Asthma Call-Back Survey (ACBS) follow usual BRFSS procedures; however, some additions and adaptations are required for the call-back survey. Disposition codes, disposition code categories, and response rates are discussed in the sections below. Figure one (1) is a flow chart describes the eligibility paths BRFSS respondents with asthma follow through the ACBS process.

Because asthma characteristics vary by season, a seasonal analysis must take into account any state for which interviewing was not conducted throughout the year. States may have interrupted interviewing due to contract interruptions with their data collection company. In addition, some ACBS interviews are finalized in the first few months of the next calendar year. If a state is missing six (6) or more consecutive months of child or adult data or has less than 6 complete months of child or adult data, the data from that state are not considered sufficiently comparable to the data from other states and are excluded from the public release file and the response rate calculations. If a state has fewer than seventy-five (75) complete child interviews, reliable weights cannot be calculated and the child data from that state is excluded from the public release file.

Appendix A includes tables showing disposition code categories, response rates and interviews by month for each state participating in the ACBS each year. Appendix B includes additional instruction on assigning the ACBS specific disposition codes. Appendix C includes the ACBS nonresponse bias analysis plan and supporting tables showing demographic breakout and prevalence for each state. Details on BRFSS response rates and procedures can be found in the BRFSS Data Quality Report Handbook and the BRFSS Summary Data Quality Report for each survey year ([http://www.cdc.gov/brfss/annual\\_data/annual\\_data.htm](http://www.cdc.gov/brfss/annual_data/annual_data.htm)).

### Disposition Codes

The BRFSS disposition codes are used for the ACBS. However, a few additional codes are needed to account for situations specific to a call-back survey. In the list below, disposition codes added for the ACBS are underlined and bolded. There is no equivalent BRFSS code for ACBS specific codes. Detailed descriptions of the ACBS codes can be found in Appendix B.

The ACBS 4-digit disposition codes for 2015 are:

#### I. Eligible, contacted: complete interview

- 1100 Complete
- 1200 Partial complete (through the end of section 8)

#### II. Eligible, contacted: refusal or termination

- 4413** Refused to participate in the call-back during the BRFSS interview
- 2112** Refused to begin the ACBS interview after contacted
- 2120** Terminated within the questionnaire during the ACBS interview (before Section 9)
- 2211** Refused to allow combining ACBS responses with BRFSS responses
- 2212** Refused to answer the “ever had asthma” question during the ACBS interview

#### III. Eligible, lost to follow-up because unable to contact or communicate with the BRFSS respondent with asthma

- 2111 Hang up or termination before respondent contacted. Household contacted but ACBS respondent not contacted

- 2210 Selected respondent never reached or reached but did not begin interview during interviewing period. Selected respondent away from residence during the entire interviewing period.
- 2220 Telephone answering device, message confirming private residential status.
- 2320 Selected respondent physically or mentally unable to complete an interview during the entire interviewing period.
- 2330 Language problem after respondent selection
- 3100 Contact, hang-up or termination, unknown if private residence
- 3130 No answer
- 3140 Telephone answering device, unknown if private residence
- 3200 Hang-up or termination, known household. Household contact, eligibility undetermined
- 3322 Physical or mental impairment
- 3330 Language problem
- 4100 Household members away from residence during entire interviewing period
- 4900 Miscellaneous, non-eligible (for ACBS miscellaneous non-contact)
- 4306** Selected ACBS respondent no longer living in the BRFSS household

**Temporary codes: should be resolved prior to submission**

- 5050 Hang-up, unknown if housing unit
- 5100 Appointment
- 5111 Household level refusal
- 5112 Refusal: hang-up or termination
- 5120 Break off/ termination in questionnaire before Section 9
- 5130 No answer
- 5140 Answering machine, unknown if private residence
- 5220 Answering machine, message confirming residential status
- 5320 Physical or mental impairment
- 5330 Language problem
- 5550 Busy
- 5560 Unsafe location for interview

**IV. Eligible, lost to follow-up for technical reasons**

- 3150 Telecommunication technological barrier, unknown if private residence
- 3700 On never call list
- 4200 Dedicated fax/data/modem line with no human contact
- 4300 Telephone number no longer in service or changed. Non-working/disconnected number.
- 4400 Busy/Fast busy/Circuit busy
- 4430 Call forwarding/ pager
- 4450 Cellular telephone from landline sample
- 4460 Cell phone sample number connects to landline
- 4470 Cell phone respondent also has landline, less than 90% of all calls on cell phone.
- 4500 Not a private residence – business
- 4510 Not a private residence - group home

**Temporary codes: should be resolved prior to submission**

- 5150 Technological barrier other than answering machine, unknown if private residence
- 5200 Fax/data/modem
- 5300 Phone number temporarily out of service. Possible non-working number
- 5400 Technological barrier other than answering machine with message confirming residential status. Fast busy. Circuit busy

5599	Mistaken Ctrl-End
5700	Supervisor attention needed
5900	Null attempt
<b>9999</b>	Missing disposition code

#### **V. Ineligible: all codes specific to ACBS (no BRFSS equivalent)**

<b>2290</b>	Most knowledgeable person is not parent or guardian
<b>2291</b>	No parent or legal guardian in the household (child ineligible)
<b>4480</b>	Not recruited for call-back at BRFSS interview (excluded by state)
<b>4490</b>	Random child/adult selection: adult ineligible, child selected
<b>4491</b>	Random child/adult selection: child ineligible, adult selected
<b>4405</b>	Out-of-state when ACBS records are not transferred to state of residence
<b>4700</b>	Household, no eligible respondent (respondent does not have asthma)
<b>4411</b>	Selected respondent not eligible for follow-up
<b>4412</b>	Transferred from BRFSS but not attempted (excluded by state)
<b>4471</b>	Misdiagnosed asthma in respondent

### **Definitions and Labels for Disposition Code Categories**

Because the ACBS is a call-back interview, all those identified with asthma at the BRFSS interview are, with a few notable exceptions, eligible for the call-back survey. The ACBS eligibility flow chart (Figure 1) summarizes how BRFSS respondents are categorized for ACBS response rate calculation.

ACBS interviews are considered complete (COIN) if the respondents finish the entire interview or if they complete through section 8 of the ACBS interview. ACBS interviews are refusals if the respondent refuses participation at either the BRFSS interview or at the time of the ACBS interview. Terminations are ACBS interviews that start but are terminated during the interview before completing section 8.

The disposition codes that relate to contact problems or technology issues are considered “eligible, but lost to follow-up.” If they had been contacted, a small proportion of those eligible but lost to follow-up might actually be ineligible. All temporary disposition codes (numbered 5000 or higher) that should have been resolved but were not are treated as comparable 4000 level codes.

BRFSS respondents with asthma who are considered ineligible for the ACBS include those who are not asked to participate at the time of the BRFSS interview. Each year between 10% and 15% of those technically eligible are not asked to participate in the call-back survey. Respondents might not be asked for several reasons:

- States with split samples may only include respondents in the call-back if they are in specified splits of the BRFSS sample. Counts for states that exclude split-sample respondents are excluded from the following tables and rate calculations.
- The BRFSS respondent may partially complete the BRFSS interview but terminate before the call-back request.
- Specific state BRFSS call-back contracts may limit the number of call-back interviews due to budgetary constraints.
- States may stop conducting call-back interviews during contract negotiations.

BRFSS respondents with asthma who are asked to participate in the ACBS but are later classified as ineligible include:

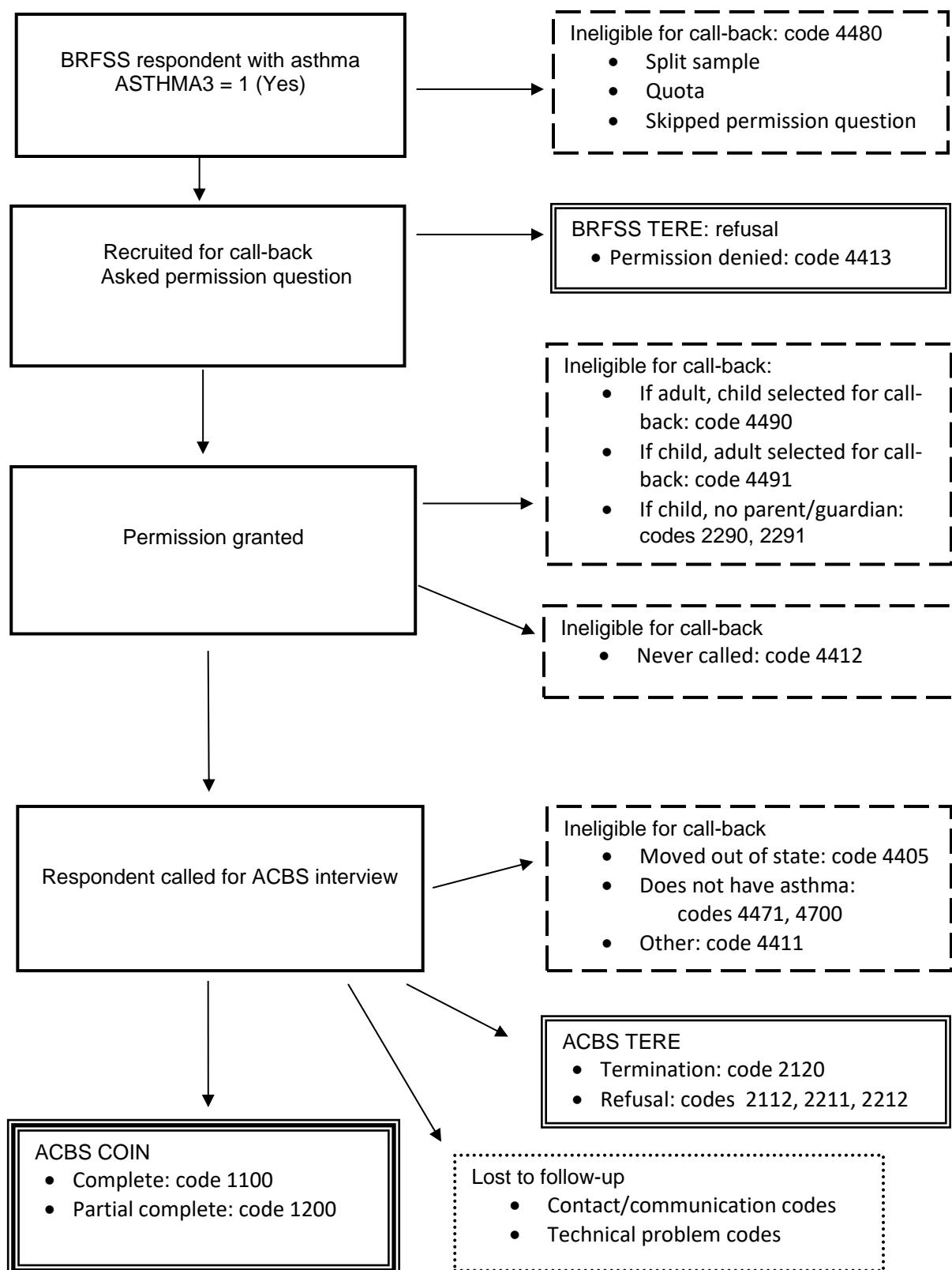
- Respondents in households where both the selected adult and selected child in the household have asthma. When both have asthma, only one is eligible for the ACBS.

- Respondents who move out-of-state between the BRFSS interview and the ACBS interview in states that are not transferring ACBS interview or to/from states not participating in the ACBS.
- Respondents who indicate, at the time of the ACBS interview, that the reported diagnosis of asthma was an error
- Child respondents for whom the adult BRFSS respondent is not the child's parent or guardian
- Some respondents in states that have reached a pre-specified quota for ACBS interviews

The following table indicates how disposition codes are grouped into response rate categories shown in the eligibility flow chart (Figure 1):

Category	Disposition Codes	Notes
Eligible COIN Completed interview	1100, 1200	Through section 8
Eligible TERE Terminations and refusals	<u><b>4413</b></u>	At BRFSS interview
	<u><b>2112, 2120, 2211, 2212,</b></u>	At ACBS
Eligible, lost to follow-up Not interviewed	2111, 2210, 2220, 2320, 2330, 3100, 3130, 3140, 3200, 3322, 3330, 4100, 4900, <u><b>4306</b></u> , 5050, 5100, 5111, 5112, 5120, 5130, 5140, 5220, 5320, 5330, 5550, 5560	Unable to contact or communicate with eligible respondent
	3150, 3700, 4200, 4300, 4400, 4430, 4450, 4460, 4470, 4500, 4510, 5400, 5150, 5200, 5300, 5599, 5700, 5900, <u><b>9999</b></u>	Technical problems
Ineligible	<u><b>2290, 2291, 4480, 4490, 4491</b></u>	At BRFSS interview
	<u><b>4405, 4700, 4411, 4471</b></u>	At ACBS
	<u><b>4412</b></u>	No ACBS attempt

**Figure 1: ACBS Eligibility Flow Chart:**





## ACBS Response Rates

The ACBS Interview Completion Rate is the proportion of completed interviews among eligible respondents who are actually contacted for and started the ACBS interview. Those who refuse at the initial BRFSS interview (4413), those ineligible, and those never contacted are excluded from the denominator. This rate is based on actual contacts with the eligible respondent at the time of the call-back interview. The numerator of the rate includes completed interviews (COIN). The denominator of the rate includes completed interviews (COIN) plus the number contacted later for the ACBS interview who refuse or terminated the interview (disposition codes 2112, 2120, 2211, and 2212).

The ACBS Cooperation Rate is the proportion of completed interviews among all eligible respondents who are recruited and actually contacted for the ACBS interview. Eligible respondents who refuse the call-back at the time of the BRFSS interview are included. Non-contacts are excluded from the denominator, but contacts with communication problems specific to the respondent with asthma are included. The numerator of the rate includes completed interviews (COIN). The denominator of the rate includes completed interviews (COIN) plus refusals and terminations (TERE) plus the number of non-interviews that involved language problems with the respondent with asthma (2330) or physical/mental impairment of the respondent with asthma (2320). A Cooperation Rate below sixty-five percent (65%) may indicate some problem with interviewing techniques.

The Refusal Rate is the percentage of all eligible respondents that refuse to be interviewed or terminate an interview early in the questionnaire. The numerator includes terminations and refusals (TERE). The denominator is the same as for the CASRO rate (below). The denominator includes completed interviews (COIN), terminations and refusals (TERE), and a proportion of those eligible, but lost to follow-up. The proportion represents an estimate of the number of those lost to follow-up who would be expected to remain eligible if they had been contacted. The proportion of cases lost to follow-up that are estimated to be eligible is the same as the proportion of cases not lost to follow-up that are eligible. A Refusal Rate above thirty-five percent (35%) indicates some problem with interviewing techniques.

The Council of American Survey Research Organizations (CASRO) rate is a measure of respondent cooperation and is generally defined as the proportion of all eligible respondents in the sample for whom an interview has been completed. The numerator of the CASRO rate includes completed interviews (COIN). The denominator includes completed interviews (COIN), terminations and refusals (TERE), and a proportion of those eligible, but lost to follow-up. The proportion represents an estimate of the number of those lost to follow-up who would be expected to remain eligible if they had been contacted. The proportion of cases lost to follow-up that are estimated to be eligible is the same as the proportion of cases not lost to follow-up that are eligible. A CASRO rate below forty percent should be cause for a review of data collection practices that could affect it, especially sample management and interviewer recruitment, retention, training, supervision, and monitoring.

Response rate formulae for the ACBS are specified below. Response rate tables for the ACBS, including response rates for each state/area participating in the ACBS, can be found in Appendix A. Detail on ACBS specific disposition codes can be found in Appendix B.

## Response Rate Formulae for the ACBS

### ACBS Interview Completion Rate:

$$\frac{1100 + 1200}{1100 + 1200 + \underline{2120} + \underline{2211} + \underline{2212} + \underline{2112}}$$

### ACBS Cooperation Rate:

$$\frac{1100 + 1200}{1100 + 1200 + \underline{2120} + \underline{2211} + \underline{2212} + \underline{2112} + \underline{4413} + 2320 + 2330}$$

### ACBS CASRO Rate:

$$\frac{1100 + 1200}{[1100 + 1200 + \underline{2120} + \underline{2211} + \underline{2212} + \underline{2112} + \underline{4413}] + P * [\text{Eligible lost}]}$$

### ACBS Refusal Rate:

$$\frac{\underline{2120} + \underline{2211} + \underline{2212} + \underline{2112} + \underline{4413}}{[1100 + 1200 + \underline{2120} + \underline{2211} + \underline{2212} + \underline{2112} + \underline{4413}] + P * [\text{Eligible lost}]}$$

Where:

P (Proportion) = (COIN + ACBS TERE) / (COIN + ACBS TERE + Ineligible)

$$\frac{[(1100+1200) + (\underline{2120} + \underline{2211} + \underline{2212} + \underline{2112}))]}{[(1100+1200)+(\underline{2120}+\underline{2211}+\underline{2212}+\underline{2112})+\underline{4405}+\underline{4700}+\underline{4411}+\underline{4471}+\underline{2291}+\underline{2290}+\underline{4480}+\underline{4490}+\underline{4491}+\underline{4412}]}$$

Eligible lost = 2111, 2210, 2220, 2320, 2330, 3100, 3130, 3140, 3200, 3322, 3330, 4100, 4900, 4306, 5050, 5100, 5111, 5112, 5120, 5130, 5140, 5220, 5320, 5330, 5550, 5560, 3150, 3700, 4200, 4300, 4400, 4430, 4450, 4460, 4470, 4500, 4510, 5400, 5150, 5200, 5300, 5599, 5700, 5900, 5999

## **ACBS Nonresponse Bias**

The Asthma Call Back Survey (ACBS) uses post-stratification weighting to ensure the sample conforms to the state estimated asthma population with respect to geography, age, sex, race, ethnicity and other characteristics. However, nonresponse bias cannot be completely removed. In order to communicate the potential impact of nonresponse bias on the ACBS analysis results, where two groups of tables are being provided (see Appendix C). The first group of tables were ACBS unweighted frequencies for respondents, non-respondents, and BRFSS eligible asthma respondents by age, sex, and race/ethnicity demographic categories for each state. The second group of tables will report current asthma prevalence (Appendix C). ACBS respondents are those respondents who completed or partially completed the interview. Nonresponse for the ACBS is influenced by eligible BRFSS respondents for which no interview was conducted such as: (1) refusals, terminations, and non-consent; (2) lost to follow-up due to non-contact or communication; and (3) lost to follow-up due to technological circumstances. BRFSS eligible respondents are respondents on the BRFSS survey who responded, "Yes" to the question, "Has a doctor, nurse, or other health professional EVER told you that you had any of the following?" A respondent classified as current prevalence if he or she also responded "yes" to the "Do you still have asthma" question.

## **Appendix A:**

### **List of Tables in the 2015 BRFSS ACBS Summary Data Quality Report**

#### **Landline and Cell Phone samples**

Table 1.1 ACBS 2015 Disposition Categories by State/Territory: Adult Landline and Cell Phone Sample

Table 1.2 ACBS 2015 Disposition Categories by State/Territory: Child Landline and Cell Phone Sample

Table 2.1 ACBS 2015 Response Rates by State/Territory: Adult Landline and Cell Phone Sample

Table 2.2 ACBS 2015 Response Rates by State/Territory: Child Landline and Cell Phone Sample

Table 3.1 ACBS 2015 Completed Interviews by State/Territory and Month: Adult Landline and Cell Phone Sample

Table 3.2 ACBS 2014 Completed Interviews by State/Territory and Month: Child Landline and Cell Phone Sample

Table 1.1 ACBS 2015 Disposition Categories by State/Territory: Adult Landline and Cell Phone Sample

STATE	BRFSS Asthma	Ineligible Not Recruited		Recruited for call-back				Ineligible		Total Called	Eligible				Ineligible
				Refused		Agreed		Child selected	Never Called		COIN	ACBS TERE	Lost to follow-up		
		BRFSS TERE		Contact	Technical										
Connecticut	1,821	289	15.87%	437	24.00%	1,095	60.13%	43	0	1,051	514	51	413	55	18
Florida* *****	1,079	235	21.78%	193	17.89%	651	60.33%	0	3	648	332	30	233	29	24
Georgia	605	167	27.60%	85	14.05%	353	58.35%	18	2	333	251	15	64	3	0
Hawaii	1,102	143	12.98%	343	31.13%	616	55.90%	27	70	519	260	25	228	5	1
Indiana	769	96	12.48%	158	20.55%	515	66.97%	8	0	507	300	10	172	16	9
Iowa*	671	87	12.97%	171	25.48%	413	61.55%	0	1	412	265	12	125	9	1
Kansas	2,963	386	13.03%	738	24.91%	1,839	62.07%	66	353	1,420	838	54	487	39	2
Maine**	806	69	8.56%	167	20.72%	570	70.72%	14	1	555	369	16	157	6	7
Massachusetts	1,423	235	16.51%	369	25.93%	819	57.55%	0	7	812	354	188	230	32	8
Michigan	1,282	108	8.42%	395	30.81%	779	60.76%	39	0	740	541	44	139	5	11
Minnesota	1,757	202	11.50%	371	21.12%	1,184	67.39%	40	0	1,144	834	27	271	8	4
Mississippi	643	43	6.69%	141	21.93%	459	71.38%	7	97	355	218	11	104	4	18
Missouri	901	92	10.21%	251	27.86%	558	61.93%	6	88	463	260	10	171	12	10
Montana	710	46	6.48%	195	27.46%	469	66.06%	5	115	349	201	11	121	12	4
Nebraska	1,951	199	10.20%	582	29.83%	1,170	59.97%	38	1	1,131	690	53	360	17	11
Nevada*	387	31	8.01%	103	26.61%	253	65.37%	0	3	250	148	9	81	7	5
New Hampshire	966	125	12.94%	294	30.43%	547	56.63%	13	0	532	283	22	191	29	7
New Jersey	1,300	208	16.00%	217	16.69%	875	67.31%	34	0	841	609	36	191	5	0
New Mexico	945	104	11.01%	243	25.71%	598	63.28%	21	1	576	355	27	170	19	5
New York**	854	117	13.70%	170	19.91%	567	66.39%	19	1	547	312	18	202	6	9
Ohio	1,494	591	39.56%	173	11.58%	730	48.86%	14	8	708	530	31	141	6	0
Oregon	856	129	15.07%	274	32.01%	453	52.92%	26	11	416	289	34	59	28	6
Pennsylvania	750	76	10.13%	157	20.93%	517	68.93%	20	0	497	287	16	189	4	1
Rhode Island	963	154	15.99%	253	26.27%	556	57.74%	19	0	537	267	26	217	20	7
Texas	1,770	336	18.98%	459	25.93%	975	55.08%	23	3	949	561	37	307	29	15
Utah	1,522	131	8.61%	409	26.87%	982	64.52%	42	5	934	544	51	305	22	12
Vermont	968	114	11.78%	224	23.14%	630	65.08%	23	0	606	356	9	205	26	10
Wisconsin	801	150	18.73%	117	14.61%	534	66.67%	18	9	507	348	44	97	14	4
Puerto Rico	904	26	2.88%	93	10.29%	785	86.84%	44	24	717	429	16	212	40	20
29 Areas Total	32,963	4,689	14.23%	7,782	23.61%	20,492	62.17%	627	803	19,056	11,545	933	5,842	507	229

**Notes**

\*States did not include children: Florida, Illinois, Iowa, and Nevada

\*\*States only included in version 1 of sample split: Maine, New York

\*\*\*States only included respondents in version 2 of the sample split: Oklahoma

\*\*\*\* California, Illinois, and Oklahoma was exclude because of less than 6 months data

\*\*\*\*\*Florida didn't collect the January - April cell phone data

Table 1.2 ACBS 2015 Disposition Categories by State/Territory: Child Landline and Cell Phone Sample

STATE	BRFSS Asthma	Ineligible Not Recruited		Recruited for call-back				Ineligible		Total Called	Eligible				Ineligible
				Refused BRFSS TERE		Agreed		Selected	Never Called		COIN	ACBS TERE	Lost to follow-up		
													Contact	Technical	
Connecticut	366	20	5.46%	80	21.86%	266	72.68%	0	0	231	100	15	91	15	10
Georgia*	129	23	17.83%	12	9.30%	94	72.87%	0	0	86	55	3	25	3	0
Hawaii*	286	50	17.48%	71	24.83%	165	57.69%	0	21	100	42	3	54	1	0
Indiana*	155	13	8.39%	35	22.58%	107	69.03%	0	0	88	43	4	40	1	0
Kansas	643	64	9.95%	124	19.28%	455	70.76%	0	26	358	166	9	171	11	1
Maine* **	151	16	10.60%	25	16.56%	110	72.85%	0	0	91	55	0	34	2	0
Massachusetts*	100	0	0.00%	26	26.00%	74	74.00%	0	0	45	10	20	15	0	0
Michigan	258	1	0.39%	74	28.68%	183	70.93%	0	0	162	90	14	36	0	22
Minnesota	358	44	12.29%	63	17.60%	251	70.11%	0	0	209	142	5	61	1	0
Mississippi*	159	34	21.38%	19	11.95%	106	66.67%	0	13	73	28	2	30	9	4
Missouri*	158	15	9.49%	37	23.42%	106	67.09%	0	24	62	28	3	28	1	2
Montana*	130	19	14.62%	20	15.38%	91	70.00%	0	22	61	29	0	27	3	2
Nebraska	358	36	10.06%	70	19.55%	252	70.39%	0	1	202	118	11	66	3	4
New Hampshire*	148	0	0.00%	50	33.78%	98	66.22%	0	0	79	29	2	45	3	0
New Jersey	360	55	15.28%	51	14.17%	254	70.56%	0	0	221	148	6	65	0	2
New Mexico*	200	30	15.00%	10	5.00%	160	80.00%	0	1	122	63	7	42	4	6
New York* **	176	17	9.66%	31	17.61%	128	72.73%	0	0	101	41	3	55	2	0
Ohio**	191	39	20.42%	26	13.61%	126	65.97%	0	0	109	75	4	28	1	1
Oregon*	133	39	29.32%	11	8.27%	83	62.41%	0	0	83	46	8	20	4	5
Pennsylvania*	177	26	14.69%	20	11.30%	131	74.01%	0	0	101	47	4	45	2	3
Rhode Island*	187	6	3.21%	50	26.74%	131	70.05%	0	0	107	39	1	61	2	4
Texas	401	69	17.21%	77	19.20%	255	63.59%	0	27	193	96	8	79	7	3
Utah	427	50	11.71%	98	22.95%	279	65.34%	0	0	226	119	14	77	10	6
Vermont*	204	5	2.45%	39	19.12%	160	78.43%	0	0	131	60	1	61	8	1
Wisconsin*	136	19	13.97%	17	12.50%	100	73.53%	0	2	73	44	11	15	3	0
Puerto Rico	329	34	10.33%	19	5.78%	276	83.89%	0	13	213	93	9	87	19	5
26 Areas Total	6320	724	11.46%	1,155	18.28%	4,441	70.27%	0	150	3,527	1,806	167	1,358	115	81

**Notes**

\*Child data for California, Georgia, Hawaii, Indiana, Maine, Massachusetts, Mississippi, Missouri, Montana, New Hampshire, New Mexico, New York, Oklahoma, Oregon, Pennsylvania, Rhode Island, Vermont, Wisconsin were not included in the public released data file because there were too few records (<75) to produce reliable weights

\*\*States only included in version 1 of sample split: Maine, New York, Ohio

\*\*\* California, Illinois, and Oklahoma was exclude because of less than 6 months data

**Table 2.1 ACBS 2015 Response Rates by State/Territory: Adult Landline and Cell Phone Sample**

<b>STATE</b>	<b>Completion Rate</b>	<b>Cooperation Rate</b>	<b>Refusal Rate</b>	<b>CASRO Rate</b>
Connecticut	90.97%	51.04%	37.78%	39.80%
Florida* ****	91.71%	59.39%	31.54%	46.96%
Georgia	94.36%	71.51%	25.62%	64.30%
Hawaii	91.23%	41.34%	48.79%	34.47%
Indiana	96.77%	63.97%	27.73%	49.52%
Iowa*	95.67%	59.02%	33.31%	48.23%
Kansas	93.95%	51.35%	41.55%	43.96%
Maine**	95.84%	66.73%	26.76%	53.96%
Massachusetts	65.31%	38.77%	51.09%	32.47%
Michigan	92.48%	54.98%	40.15%	49.48%
Minnesota	96.86%	67.69%	27.47%	57.56%
Mississippi	95.20%	58.92%	35.12%	50.37%
Missouri	96.30%	49.71%	41.59%	41.43%
Montana	94.81%	49.14%	42.84%	41.80%
Nebraska	92.87%	52.08%	39.51%	42.93%
Nevada*	94.27%	56.92%	33.89%	44.78%
New Hampshire	92.79%	47.25%	42.16%	37.76%
New Jersey	94.42%	70.65%	25.19%	60.63%
New Mexico	92.93%	56.44%	35.26%	46.36%
New York**	94.55%	62.40%	29.18%	48.43%
Ohio	94.47%	72.21%	25.37%	65.90%
Oregon	89.47%	48.41%	47.11%	44.21%
Pennsylvania	94.72%	62.26%	28.54%	47.34%
Rhode Island	91.13%	48.63%	40.27%	38.54%
Texas	93.81%	52.82%	39.27%	44.42%
Utah	91.43%	54.13%	36.72%	43.43%
Vermont	97.53%	60.34%	30.89%	47.19%
Wisconsin	88.78%	68.37%	27.52%	59.49%
Puerto Rico	96.40%	79.59%	14.76%	58.08%
<b>29 Areas Total</b>	<b>92.52%</b>	<b>56.87%</b>	<b>35.61%</b>	<b>47.18%</b>

\*States did not include children: Florida, Illinois, Iowa, and Nevada

\*\*States only included in version 1 of sample split: Maine and New York

\*\*\*California, Illinois, and Oklahoma was exclude because of less than 6 months data

\*\*\*\*Florida didn't collect the January - April cell phone data

**Table 2.2 ACBS 2015 Response Rates by State/Territory: Child Landline and Cell Phone Sample**

<b>STATE</b>	<b>Completion Rate</b>	<b>Cooperation Rate</b>	<b>Refusal Rate</b>	<b>CASRO Rate</b>
Connecticut	86.96%	51.28%	36.16%	38.06%
Georgia*	94.83%	78.57%	17.00%	62.32%
Hawaii*	93.33%	36.21%	56.29%	31.95%
Indiana*	91.49%	52.44%	36.66%	40.42%
Kansas	94.86%	55.52%	33.80%	42.18%
Maine* **	100.00%	68.75%	24.51%	53.92%
Massachusetts*	33.33%	17.86%	72.30%	15.72%
Michigan	86.54%	50.56%	43.29%	44.27%
Minnesota	96.60%	67.62%	27.30%	57.00%
Mississippi"	93.33%	57.14%	34.66%	46.22%
Missouri*	90.32%	41.18%	51.43%	36.00%
Montana*	100.00%	59.18%	33.40%	48.43%
Nebraska	91.47%	59.30%	33.80%	49.24%
New Hampshire*	93.55%	35.80%	46.95%	26.18%
New Jersey	96.10%	72.20%	23.17%	60.16%
New Mexico*	90.00%	78.75%	16.61%	61.55%
New York* **	93.18%	54.67%	32.85%	39.61%
Ohio**	94.94%	71.43%	24.62%	61.55%
Oregon*	85.19%	70.77%	24.29%	58.81%
Pennsylvania*	92.16%	66.20%	25.86%	50.65%
Rhode Island*	97.50%	43.33%	41.11%	31.44%
Texas	92.31%	53.04%	38.89%	43.92%
Utah	89.47%	51.52%	40.17%	42.68%
Vermont*	98.36%	60.00%	27.60%	41.39%
Wisconsin*	80.00%	61.11%	34.23%	53.79%
Puerto Rico	91.18%	76.86%	16.09%	53.45%
<b>26 Areas Total</b>	<b>91.54%</b>	<b>57.74%</b>	<b>33.76%</b>	<b>46.12%</b>

\*Child data for California, Georgia, Hawaii, Indiana, Maine, Massachusetts, Mississippi, Missouri, Montana, New Hampshire, New Mexico, New York, Oklahoma, Oregon, Pennsylvania, Rhode Island, Vermont, Wisconsin were not included in the public released data file because there were too few records (<75) to produce reliable weights

\*\*States only included in version 1 of sample split: Maine, New York, Ohio

\*\*\* California, Illinois, and Oklahoma was exclude because of less than 6 months data



**Table 3.1 ACBS 2015 Completed Interviews by State/Territory and Month: Adult Landline and Cell Phone Sample**

STATE	2015												2016			
	JAN	FEB	MAR	APR	MAY	JUN	JUL	AUG	SEP	OCT	NOV	DEC	JAN	FEB	MAR	TOTAL
California****	.	.	.	.	.	.	.	.	.	.	.	.	187	138	.	325
Connecticut	.	15	52	28	31	15	57	51	45	45	64	101	10	.	.	514
Florida*	.	.	.	.	.	.	15	77	107	35	38	47	13	.	.	332
Georgia	20	11	26	22	20	37	2	24	26	35	17	11	.	.	.	251
Hawaii	.	.	18	24	16	26	10	28	62	6	29	33	8	.	.	260
Illinois* ****	.	.	.	.	.	.	.	30	14	9	20	26	15	6	1	121
Indiana	19	26	32	20	18	26	31	24	15	22	30	28	9	.	.	300
Iowa*	.	23	49	13	3	39	29	10	35	25	7	8	24	.	.	265
Kansas	67	87	98	68	43	54	56	79	52	41	57	72	51	13	.	838
Maine**	26	36	32	22	26	34	26	17	22	31	38	48	11	.	.	369
Massachusetts	.	40	47	37	24	22	31	41	23	33	20	16	20	.	.	354
Michigan	6	72	40	32	49	31	43	81	55	46	52	22	10	2	.	541
Minnesota	66	93	114	79	70	145	107	55	22	33	24	24	2	.	.	834
Mississippi	.	.	.	.	31	36	1	21	43	8	32	5	41	.	.	218
Missouri	.	.	63	51	15	17	14	20	12	24	33	11	.	.	.	260
Montana	.	.	38	40	16	14	20	15	21	8	14	14	1	.	.	201
Nebraska	.	106	91	63	40	44	53	31	59	64	46	51	37	4	1	690
Nevada*	.	5	30	20	11	6	19	10	9	8	10	11	9	.	.	148
New Hampshire	.	14	51	16	30	18	29	13	23	11	36	36	6	.	.	283
New Jersey	4	50	78	39	51	14	89	71	16	107	53	28	9	.	.	609
New Mexico	.	.	41	32	13	44	34	34	30	33	38	14	21	21	.	355
New York**	29	63	33	21	21	27	20	16	22	18	17	18	7	.	.	312
Ohio	26	53	83	65	69	67	64	.	.	56	47	.	.	.	.	530
Oklahoma*** ****	.	.	.	23	9	7	15	3	4	.	.	20	12	.	6	99
Oregon	.	10	49	40	16	38	18	25	17	9	26	41	.	.	.	289
Pennsylvania	.	42	53	15	32	21	14	17	25	26	29	9	4	.	.	287
Rhode Island	.	17	44	17	29	11	29	22	23	11	26	33	5	.	.	267
Texas	20	56	44	39	30	67	58	42	44	45	46	40	30	.	.	561
Utah	.	.	.	.	17	125	27	77	4	37	11	70	7	120	49	544
Vermont	.	16	59	20	46	17	34	22	30	26	30	51	5	.	.	356
Wisconsin	.	.	42	44	8	.	64	50	19	23	31	7	45	15	.	348
Puerto Rico	.	.	48	44	44	34	29	.	.	4	133	70	22	1	.	429
<b>32 Areas Total</b>	<b>283</b>	<b>835</b>	<b>1,355</b>	<b>934</b>	<b>828</b>	<b>1,036</b>	<b>1,038</b>	<b>1,006</b>	<b>879</b>	<b>879</b>	<b>1,054</b>	<b>965</b>	<b>621</b>	<b>320</b>	<b>57</b>	<b>12,090</b>

**Notes**

\*States did not include children: Florida, Illinois, Iowa, and Nevada

\*\*States only included respondents in version 1 of the sample split: Maine, and New York

\*\*\*States only included respondents in version 2 of the sample split: Oklahoma

\*\*\*\* California, Illinois, and Oklahoma was exclude because of less than 6 months data

\*\*\*\*\*Florida didn't collect the January - April cell phone data

Table 3.2 ACBS 2015 Completed Interviews by State/Territory and Month: Child Landline and Cell Phone Sample

STATE	2015												2016			
	JAN	FEB	MAR	APR	MAY	JUN	JUL	AUG	SEP	OCT	NOV	DEC	JAN	FEB	MAR	TOTAL
California* ***	.	.	.	.	.	.	.	.	.	.	.	.	45	27	.	72
Connecticut	.	7	6	5	2	3	13	16	5	9	13	19	2	.	.	100
Georgia*	2	3	8	3	2	7	5	8	5	6	3	3	.	.	.	55
Hawaii*	.	.	5	5	1	5	5	2	10	.	.	1	4	4	.	42
Indiana*	1	4	4	6	4	3	1	5	2	4	6	3	.	.	.	43
Kansas	11	16	16	12	15	4	12	11	8	12	10	16	14	5	4	166
Maine*	8	3	5	6	4	2	5	5	5	4	3	.	5	.	.	55
Massachusetts*	.	5	.	2	.	.	1	.	1	.	.	1	.	.	.	10
Michigan	1	6	16	5	4	5	8	11	15	4	6	4	4	1	.	90
Minnesota	15	15	24	19	6	27	13	9	1	6	1	6	.	.	.	142
Mississippi*	.	.	.	.	4	7	1	2	2	.	.	3	2	7	.	28
Missouri*	.	.	4	6	4	7	.	6	.	1	.	.	.	.	.	28
Montana*	.	.	.	6	5	5	2	.	6	.	2	3	.	.	.	29
Nebraska	.	11	17	5	9	6	11	5	6	12	9	15	12	.	.	118
New Hampshire*	.	5	3	5	2	2	3	2	3	.	2	2	.	.	.	29
New Jersey	2	7	17	10	10	10	29	20	3	19	12	7	2	.	.	148
New Mexico*	.	.	3	10	.	3	12	4	10	4	4	10	2	1	.	63
New York*	3	10	5	1	2	6	3	3	3	1	1	1	2	.	.	41
Ohio**	.	8	12	3	2	10	9	9	6	12	4	.	.	.	.	75
Oklahoma* ***	.	.	.	2	1	1	2	1	.	.	.	1	4	.	.	12
Oregon*	.	.	5	8	8	10	2	2	2	2	1	6	.	.	.	46
Pennsylvania*	.	7	10	7	5	4	3	.	5	4	2	.	.	.	.	47
Rhode Island*	.	7	7	1	3	2	4	1	3	1	7	2	1	.	.	39
Texas	4	6	9	6	8	9	10	8	11	6	9	5	5	.	.	96
Utah	.	.	.	.	6	24	11	19	1	12	2	7	2	26	9	119
Vermont*	.	2	6	8	6	5	4	11	3	4	3	8	.	.	.	60
Wisconsin*	.	.	4	9	.	.	8	6	2	4	2	4	4	1	.	44
Puerto Rico	.	.	9	6	11	10	7	.	.	.	19	26	5	.	.	93
28 Areas Total	47	122	195	156	124	177	184	166	118	127	125	155	120	61	13	1,890

\*Child data for California, Georgia, Hawaii, Indiana, Maine, Massachusetts, Mississippi, Missouri, Montana, New Hampshire, New Mexico, New York, Oklahoma, Oregon, Pennsylvania, Rhode Island, Vermont, Wisconsin were not included in the public released data file because there were too few records (<75) to produce reliable weights

\*\*States only included in version 1 of sample split: Maine, New York, Ohio

\*\*\* California, Illinois, and Oklahoma was excluded because of less than 6 months data

## Appendix B: Instructions for Assigning Additional ACBS Disposition Codes

Following are descriptions of the ACBS disposition codes adapted from standard BRFSS disposition codes and the ACBS disposition codes added to the standard set of BRFSS disposition codes. For detailed definitions for the standard BRFSS disposition codes see the Data Quality Handbook for each survey year ([http://www.cdc.gov/brfss/annual\\_data/annual\\_data.htm](http://www.cdc.gov/brfss/annual_data/annual_data.htm)).

### I. Eligible, contacted: complete interview

#### 1100 Complete

*Definition:* Respondent completes the ACBS interview through the last question.

#### 1200 Partial complete

*Definition:* Respondent completes the ACBS interview at least through the end of Section 8 (medications).

### II. Eligible, contacted: refusal

#### 4413 Refused to participate in the call-back during the BRFSS interview

*Definition:* During the BRFSS interview, respondents who indicate they have ever been told by a doctor that they have asthma are asked if they will participate in an additional survey at a later date. Some state Institutional Review Boards (IRBs) require that the content of the additional survey (asthma) be disclosed; other state IRBs require that the specific content not be disclosed. Some states have multiple call-back surveys in the field and do not specify the content of any of the call-back interviews. If a respondent refuses to participate in the call-back survey, that record is assigned disposition code 9413.

#### 2112 Refused to begin the ACBS interview after contacted

*Definition:* If the selected respondent is contacted for the ACBS interview but refuses to begin the interview, then the record is assigned code 9220.

#### 2120 Terminated within the questionnaire during the ACBS interview

*Definition:* If the respondent is contacted for the ACBS and terminates after the interview begins (section 3) but before completing section 8, then record is considered incomplete and is assigned disposition code 9210.

#### 2211 Refused to allow combining ACBS responses with BRFSS responses

*Definition:* Some states require that the respondent provide active approval to combine their responses from the initial BRFSS interview with their responses from the ACBS interview. This approval may be requested at either the initial BRFSS interview or at the beginning of the ACBS interview. If the respondent does not approve combining data from the two interviews, the record is assigned disposition code 9211.

#### 2212 Refused to answer the “ever had asthma” question during the ACBS interview

*Definition:* The selected respondent is contacted for the ACBS interview but refuses to answer the initial asthma question. If the respondent answers "don't know" or "refused" to the ACBS question EVER-ASTH (2.1) “Have you ever been told by a doctor or other health professional that (you have/sample child has) asthma?”, then the record is assigned code 9212.

### III. Eligible, lost to follow-up because unable to contact or communicate with the BRFSS respondent

4306 Selected ACBS respondent no longer living in the BRFSS household

*Definition:* The BRFSS respondent with asthma left the BRFSS household between the BRFSS interview and the ACBS interview. If the selected respondent (from the BRFSS) no longer lives in the BRFSS household but did live in the household during the BRFSS interview, then attempts should be made to obtain new contact information for the selected respondent, and the follow-up should be conducted using the new telephone number. If this is not possible or the household refuses to provide new contact information, then the record is assigned disposition code 9306.

Refer to the Data Quality Handbook for each survey year for the definitions of all other codes in this category ([http://www.cdc.gov/brfss/technical\\_infodata/surveydata.htm](http://www.cdc.gov/brfss/technical_infodata/surveydata.htm)).

#### IV. Eligible, lost to follow-up for technical reasons

Refer to the Data Quality Handbook for each survey year for the definitions of all codes in this category ([http://www.cdc.gov/brfss/technical\\_infodata/surveydata.htm](http://www.cdc.gov/brfss/technical_infodata/surveydata.htm)).

#### V. Ineligible

**2290** The person the most knowledgeable about the selected child with asthma is not the parent or legal guardian (child ineligible)

*Definition:* This code applies only to the child ACBS interview. The child selected during the BRFSS interview is eligible for the ACBS (the BRFSS respondent indicated that the selected child has an asthma diagnosis). The ACBS child protocol allows a parent or guardian to transfer the interview to a more knowledgeable proxy respondent. If the BRFSS respondent is not the parent or guardian of the selected child with asthma, but the parent or guardian is present to transfer to the person most knowledgeable about the child's health, but the most knowledgeable person is not available, then the child is ineligible for the ACBS. The child record is assigned disposition code 2290.

**2291** No parent or legal guardian in the household (child ineligible)

*Definition:* This code applies only to the child ACBS interview. The child selected during the BRFSS interview is eligible for the ACBS (the BRFSS respondent indicated that the selected child has an asthma diagnosis). However, ACBS child protocol requires that the BRFSS respondent must be the parent or guardian of the child to provide proxy responses for the child or to approve transfer to a more knowledgeable proxy respondent. If there is no parent or guardian of the selected child with asthma in the household, the child is ineligible for the ACBS. The child record is assigned disposition code 2291.

**4405** Out-of-state

*Definition:* The BRFSS question that determines eligibility for the ACBS is "Have you ever been told by a doctor, nurse, or other health professional that (you have/the sample child has) asthma?" Respondents who answer "yes" are eligible for the ACBS. If the respondent is a state resident at the time of the BRFSS interview, but moves to an out-of-state residence between the BRFSS interview and the ACBS interview, the respondent is not eligible for the ACBS if either the new state or the old state is not participating in record transfers, and the record is assigned disposition code 4405.

**4700** Household, no eligible respondent (respondent does not have asthma)

*Definition:* The BRFSS question that determines eligibility for the ACBS is "Have you ever been told by a doctor, nurse, or other health professional that (you have/the sample child has) asthma?" Respondents who answer "yes" are eligible for the ACBS. If the respondent informs the ACBS interviewer that the recorded response from the BRFSS interview was in error and terminates the call, then the respondent is not eligible for the ACBS, and the record is assigned disposition code 4700.

**4411** Selected respondent not eligible for follow-up

*Definition:* If the respondent disagrees with the recorded response to the asthma question from the BRFSS interview and answers “no” to the ACBS question EVER-ASTH (2.1) “Have you ever been told by a doctor or other health professional that (you have/the sample child has) asthma?”, then the respondent is not eligible for the ACBS, and the record is assigned disposition code 4411.

**4412** Transferred from BRFSS but not attempted (excluded by state)

*Definition:* The BRFSS question that determines eligibility for the ACBS is “Have you ever been told by a doctor, nurse, or other health professional that (you have/the sample child has) asthma?” Respondents who answer “yes” are eligible for the ACBS. Eligible respondents are then asked for permission to call back. Those that agree should be called for the ACBS interview. However, if a respondent eligible to be called is transferred from BRFSS to the ACBS but never called, then the record is assigned disposition code 4412.

**4471** Misdiagnosed asthma in respondent (2008 and later)

*Definition:* The BRFSS question that determines eligibility for the ACBS is “Have you ever been told by a doctor, nurse, or other health professional that (you have/the sample child has) asthma?” Respondents who answer “yes” are eligible for the ACBS. However, the initial diagnosis could have been in error and changed. This misdiagnosis is not captured by the BRFSS or ACBS. If the respondent informs the interviewer of the misdiagnosis, the respondent is not eligible for the ACBS, and the record is assigned disposition code 4470.

**4480** Not recruited for call-back at BRFSS interview (excluded by state)

*Definition:* The BRFSS question that determines eligibility for the ACBS is “Have you ever been told by a doctor, nurse, or other health professional that (you have/the sample child has) asthma?” Respondents who answer “yes” are eligible for the ACBS. Eligible respondents are then asked for permission to call back. Those who agree should be called for the ACBS interview. However, if a respondent eligible to be called is not transferred from BRFSS to the ACBS and is never called, then the record is assigned disposition code 4480.

**4490** Random child/adult selection: adult ineligible, child selected

*Definition:* If both the BRFSS respondent and the randomly selected child in the household have asthma and the BRFSS respondent agrees to the call-back interview, one or the other is randomly selected to be eligible for the call-back. If the child is selected, the adult is ineligible, and the adult record is assigned disposition code 4490.

**4491** Random child/adult selection: child ineligible, adult selected

*Definition:* If both the BRFSS respondent and the randomly selected child in the household have asthma and the BRFSS respondent agrees to the call-back interview, one or the other is randomly selected to be eligible for the call-back. If the adult is selected, the child is ineligible, and the child record is assigned disposition code 4491.

## **Appendix C: Asthma Call-Back Survey (ACBS) nonresponse bias analysis**

Two tables reported. The first table reported ACBS unweighted frequencies for respondents, non-respondents, and BRFSS eligible asthma respondents by age, sex, and race/ethnicity demographic categories for each state. The second table reported estimated current asthma percent among ever diagnosed asthma people.

Table 1A. Percent of ACBS adult respondents, non-respondents and BRFSS eligible asthma respondents by demographic groups and state/territory

Table 1B. Percent of ACBS child respondents, non-respondents and BRFSS eligible asthma respondents by demographic groups and state/territory

Table 2A. Estimated percent of current asthma status among adult ever diagnosed with asthma by state/territory

Table 2B. Estimated percent of current asthma status among child ever diagnosed with asthma by state/territory

Table 1A. Percent of ACBS adult\*\* respondents, non-respondents and BRFSS eligible asthma respondents by demographic groups and state/territory

<i>Adult</i>		<i>BRFSS</i>				<i>ACBS</i>		<i>ACBS</i>			
		<i>Eligible Asthma Respondents</i>				<i>Non-Respondents</i>		<i>Respondents</i>			
<i>State</i>	<i>Demographics</i>	<i>Sample size</i>	<i>Percent unweighted</i>	<i>Weighted total</i>	<i>Percent weighted</i>	<i>Sample size</i>	<i>Percent unweighted</i>	<i>Sample size</i>	<i>Percent unweighted</i>	<i>Weighted total</i>	<i>Percent weighted</i>
States/areas total	Male	11,306	34.3	7,645,404	40.5	7,149	34.9	4,157	33.3	7,645,404	40.5
	Female	21,657	65.7	11,254,052	59.5	13,336	65.1	8,321	66.7	11,254,052	59.5
	Age 18 to 24	2,474	7.6	3,209,807	17.1	1,736	8.6	738	5.9	3,045,109	16.1
	Age 25 to 34	3,601	11.0	3,280,152	17.5	2,540	12.6	1,061	8.5	3,518,943	18.6
	Age 35 to 44	4,009	12.3	2,910,670	15.5	2,730	13.5	1,279	10.3	2,798,595	14.8
	Age 45 to 54	5,473	16.8	3,121,357	16.6	3,395	16.8	2,078	16.7	3,210,532	17.0
	Age 55 to 64	7,154	21.9	2,975,416	15.8	4,144	20.5	3,010	24.2	3,018,459	16.0
	Age 65 or older	9,936	30.4	3,275,350	17.4	5,660	28.0	4,276	34.4	3,279,310	17.4
	White - Non-Hispanic	24,587	75.7	12,144,504	65.3	14,936	74.2	9,651	78.2	13,222,885	70.8
	Black - Non-Hispanic	2,336	7.2	2,390,379	12.9	1,542	7.7	794	6.4	2,014,453	10.8
	Other race only, Non-Hispanic	1,329	4.1	743,694	4.0	916	4.5	413	3.3	572,746	3.1
	Multiracial, Non-Hispanic	1,054	3.2	377,201	2.0	701	3.5	353	2.9	484,337	2.6
	Hispanic	3,172	9.8	2,942,346	15.8	2,037	10.1	1,135	9.2	2,387,988	12.8
Connecticut	Male	586	32.2	175,580	38.5	382	30.4	204	36.1	175,580	38.5
	Female	1,235	67.8	280,571	61.5	874	69.6	361	63.9	280,571	61.5

	Age 18 to 24	123	6.8	87,214	19.3	96	7.8	27	4.8	75,687	16.7
	Age 25 to 34	166	9.2	76,223	16.9	126	10.2	40	7.1	87,750	19.4
	Age 35 to 44	231	12.9	70,643	15.7	178	14.4	53	9.4	70,643	15.6
	Age 45 to 54	289	16.1	67,493	15.0	202	16.4	87	15.5	68,606	15.1
	Age 55 to 64	411	22.9	69,765	15.5	261	21.1	150	26.7	72,334	16.0
	Age 65 or older	577	32.1	79,512	17.6	372	30.1	205	36.5	77,866	17.2
	White - Non-Hispanic	1,276	71.3	307,903	68.5	851	69.1	425	76.0	321,580	71.2
	Black - Non-Hispanic	187	10.4	47,310	10.5	147	11.9	40	7.2	29,305	6.5
	Other race only, Non-Hispanic	58	3.2	15,795	3.5	42	3.4	16	2.9	13,961	3.1
	Multiracial, Non-Hispanic	22	1.2	3,727	0.8	9	0.7	13	2.3	10,298	2.3
	Hispanic	247	13.8	74,878	16.7	182	14.8	65	11.6	76,460	16.9
Florida	Male	355	32.9	715,574	40.2	237	33.1	118	32.6	715,574	40.2
	Female	724	67.1	1,063,109	59.8	480	66.9	244	67.4	1,063,109	59.8
	Age 18 to 24	62	5.8	260,490	14.7	52	7.3	10	2.8	181,149	10.2
	Age 25 to 34	85	7.9	254,009	14.3	62	8.7	23	6.4	333,350	18.7
	Age 35 to 44	108	10.1	272,038	15.3	82	11.5	26	7.2	272,038	15.3
	Age 45 to 54	146	13.6	280,731	15.8	98	13.8	48	13.3	284,451	16.0
	Age 55 to 64	246	22.9	334,086	18.8	161	22.6	85	23.5	335,333	18.9
	Age 65 or older	427	39.8	372,095	21.0	257	36.1	170	47	372,362	20.9
	White - Non-Hispanic	747	70.9	973,114	55.8	471	67.7	276	77.3	1,108,927	62.9
	Black - Non-Hispanic	107	10.2	246,348	14.1	74	10.6	33	9.2	308,199	17.5
	Other race only, Non-Hispanic	33	3.1	55,878	3.2	25	3.6	8	2.2	14,144	0.8
	Multiracial, Non-Hispanic	19	1.8	22,075	1.3	18	2.6	1	0.3	16,770	1.0
	Hispanic	147	14.0	445,710	25.6	108	15.5	39	10.9	314,322	17.8



Georgia	Male	171	28.3	370,697	38.0	92	27.1	79	29.7	370,697	38.0
	Female	434	71.7	605,295	62.0	247	72.9	187	70.3	605,295	62.0
	Age 18 to 24	36	6.0	178,835	18.4	20	6.0	16	6.0	171,006	17.5
	Age 25 to 34	40	6.7	138,062	14.2	25	7.5	15	5.6	145,891	14.9
	Age 35 to 44	67	11.2	145,712	15.0	48	14.4	19	7.1	109,063	11.2
	Age 45 to 54	108	18.0	190,285	19.6	66	19.8	42	15.8	226,934	23.3
	Age 55 to 64	142	23.7	157,477	16.2	76	22.8	66	24.8	160,333	16.4
	Age 65 or older	207	34.5	162,765	16.7	99	29.6	108	40.6	162,765	16.7
	White - Non-Hispanic	392	65.8	547,330	56.5	202	61.0	190	71.7	596,545	61.1
	Black - Non-Hispanic	156	26.2	311,653	32.2	98	29.6	58	21.9	267,627	27.4
	Other race only, Non-Hispanic	24	4.0	39,352	4.1	17	5.1	7	2.6	35,861	3.7
	Multiracial, Non-Hispanic	10	1.7	24,487	2.5	6	1.8	4	1.5	34,710	3.6
	Hispanic	14	2.3	45,708	4.7	8	2.4	6	2.3	41,248	4.2
Hawaii	Male	427	38.7	80,140	43.1	319	39.0	108	37.9	80,140	43.1
	Female	675	61.3	105,653	56.9	498	61.0	177	62.1	105,653	56.9
	Age 18 to 24	133	12.2	35,951	19.4	110	13.6	23	8.1	36,270	19.5
	Age 25 to 34	147	13.4	36,793	19.9	125	15.4	22	7.7	36,474	19.6
	Age 35 to 44	147	13.4	29,511	16.0	114	14.1	33	11.6	27,950	15.0
	Age 45 to 54	147	13.4	23,111	12.5	114	14.1	33	11.6	25,486	13.7
	Age 55 to 64	251	22.9	31,232	16.9	174	21.5	77	27.1	31,233	16.8
	Age 65 or older	269	24.6	28,266	15.3	173	21.4	96	33.8	28,334	15.3
	White - Non-Hispanic	239	21.9	30,012	16.3	151	18.7	88	31.0	34,614	18.8
	Other race only, Non-Hispanic	362	33.2	72,638	39.4	281	34.8	81	28.5	58,781	32.0
	Multiracial, Non-Hispanic	374	34.2	54,585	29.6	278	34.4	96	33.8	65,489	35.6

	Hispanic	116	10.6	26,910	14.6	97	12.0	19	6.7	24,823	13.5
Indiana	Male	262	34.1	264,068	37.9	163	35.5	99	31.9	264,068	37.9
	Female	507	65.9	432,084	62.1	296	64.5	211	68.1	432,084	62.1
	Age 18 to 24	49	6.4	125,428	18.0	35	7.6	14	4.5	136,159	19.6
	Age 25 to 34	67	8.7	143,425	20.6	53	11.6	14	4.5	132,694	19.1
	Age 35 to 44	67	8.7	85,955	12.4	47	10.3	20	6.5	75,876	10.9
	Age 45 to 54	118	15.4	107,418	15.4	65	14.2	53	17.1	117,960	16.9
	Age 55 to 64	195	25.4	120,762	17.4	114	24.9	81	26.1	120,762	17.3
	Age 65 or older	272	35.4	112,701	16.2	144	31.4	128	41.3	112,701	16.2
	White - Non-Hispanic	653	86.1	554,946	81.1	393	86.9	260	85.0	512,127	75.6
	Black - Non-Hispanic	53	7.0	71,537	10.5	32	7.1	21	6.9	70,577	10.4
	Other race only, Non-Hispanic	11	1.5	14,484	2.1	4	0.9	7	2.3	29,860	4.4
	Multiracial, Non-Hispanic	22	2.9	20,189	3.0	12	2.7	10	3.3	40,756	6.0
	Hispanic	19	2.5	23,213	3.4	11	2.4	8	2.6	24,210	3.6
Iowa	Male	259	38.6	118,147	42.9	167	42.4	92	33.2	118,147	42.9
	Female	412	61.4	157,454	57.1	227	57.6	185	66.8	157,454	57.1
	Age 18 to 24	41	6.2	43,148	15.8	30	7.7	11	4.0	32,950	12.0
	Age 25 to 34	71	10.7	56,854	20.8	44	11.3	27	9.8	67,051	24.5
	Age 35 to 44	72	10.8	36,181	13.2	47	12.1	25	9.1	28,353	10.4
	Age 45 to 54	111	16.7	46,039	16.8	62	15.9	49	17.8	53,258	19.5
	Age 55 to 64	154	23.2	43,188	15.8	88	22.6	66	23.9	43,434	15.9
	Age 65 or older	216	32.5	48,364	17.7	118	30.3	98	35.5	48,665	17.8
	White - Non-Hispanic	609	91.6	239,007	87.5	354	91.0	255	92.4	252,975	91.8
	Black - Non-Hispanic	22	3.3	10,877	4.0	9	2.3	13	4.7	14,030	5.1

	Other race only, Non-Hispanic	13	2.0	7,879	2.9	10	2.6	3	1.1	4,125	1.5
	Multiracial, Non-Hispanic	11	1.7	6,920	2.5	7	1.8	4	1.4	4,300	1.6
<b>Kansas</b>	Male	1,158	39.1	131,355	45.0	810	39.1	348	39.0	131,355	45.0
	Female	1,805	60.9	160,716	55.0	1,261	60.9	544	61.0	160,716	55.0
	Age 18 to 24	244	8.3	52,207	18.0	181	8.8	63	7.1	52,207	17.9
	Age 25 to 34	388	13.2	54,668	18.8	303	14.8	85	9.6	54,753	18.8
	Age 35 to 44	360	12.3	44,509	15.3	262	12.8	98	11.0	44,509	15.3
	Age 45 to 54	478	16.3	46,782	16.1	335	16.4	143	16.1	47,706	16.3
	Age 55 to 64	619	21.1	44,769	15.4	411	20.1	208	23.4	45,322	15.5
	Age 65 or older	849	28.9	47,163	16.3	556	27.1	293	32.9	47,291	16.2
	White - Non-Hispanic	2,448	83.5	229,243	79.4	1,693	82.5	755	86.1	232,051	81.7
	Black - Non-Hispanic	160	5.5	21,137	7.3	116	5.7	44	5.0	19,310	6.8
	Other race only, Non-Hispanic	66	2.3	8,851	3.1	46	2.2	20	2.3	8,427	3.0
	Multiracial, Non-Hispanic	104	3.5	9,732	3.4	84	4.1	20	2.3	6,336	2.2
	Hispanic	152	5.2	19,615	6.8	114	5.6	38	4.3	17,739	6.2
<b>Maine</b>	Male	263	32.6	70,148	39.1	146	34.7	117	30.4	70,148	39.1
	Female	543	67.4	109,099	60.9	275	65.3	268	69.6	109,099	60.9
	Age 18 to 24	41	5.1	23,656	13.3	29	7.0	12	3.1	17,492	9.8
	Age 25 to 34	80	10.0	37,185	20.8	47	11.3	33	8.6	43,349	24.2
	Age 35 to 44	110	13.8	30,144	16.9	62	14.9	48	12.6	30,144	16.9
	Age 45 to 54	141	17.6	29,488	16.5	77	18.5	64	16.8	29,488	16.5
	Age 55 to 64	188	23.5	29,787	16.7	95	22.8	93	24.3	30,102	16.8
	Age 65 or older	239	29.9	28,169	15.8	107	25.7	132	34.6	28,309	15.8
	White - Non-Hispanic	761	95.0	165,417	92.8	405	96.9	356	93.0	160,982	90.0

	Black - Non-Hispanic	2	0.2	655	0.4	1	0.2	1	0.3	1,657	0.9
	Other race only, Non-Hispanic	13	1.6	4,430	2.5	5	1.2	8	2.1	4,595	2.6
	Multiracial, Non-Hispanic	17	2.1	4,889	2.7	5	1.2	12	3.1	7,449	4.2
	Hispanic	8	1.0	2,771	1.6	2	0.5	6	1.6	4,222	2.4
Massachusetts	Male	509	35.8	324,885	40.5	332	37.7	177	32.7	324,885	40.5
	Female	914	64.2	477,282	59.5	549	62.3	365	67.3	477,282	59.5
	Age 18 to 24	128	9.2	133,944	17.0	91	10.6	37	6.9	138,602	17.3
	Age 25 to 34	200	14.3	143,317	18.1	146	17.0	54	10.1	138,660	17.3
	Age 35 to 44	164	11.7	116,738	14.8	99	11.5	65	12.1	116,738	14.6
	Age 45 to 54	282	20.2	143,107	18.1	174	20.2	108	20.1	151,361	18.9
	Age 55 to 64	280	20.0	126,246	16.0	157	18.2	123	22.9	128,728	16.1
	Age 65 or older	343	24.6	126,701	16.0	194	22.5	149	27.8	126,668	15.8
	White - Non-Hispanic	1,095	78.4	602,040	76.5	665	76.7	430	81.3	577,391	74.8
	Black - Non-Hispanic	93	6.7	56,073	7.1	62	7.2	31	5.9	36,792	4.8
	Other race only, Non-Hispanic	39	2.8	32,222	4.1	25	2.9	14	2.6	51,544	6.7
	Multiracial, Non-Hispanic	40	2.9	22,636	2.9	27	3.1	13	2.5	18,698	2.4
	Hispanic	129	9.2	73,785	9.4	88	10.1	41	7.8	87,287	11.3
Michigan	Male	468	36.5	517,769	43.9	264	37.9	204	34.9	517,769	43.9
	Female	814	63.5	662,618	56.1	433	62.1	381	65.1	662,618	56.1
	Age 18 to 24	130	10.2	208,093	17.7	89	12.9	41	7.0	208,093	17.6
	Age 25 to 34	176	13.8	218,678	18.6	106	15.3	70	12.0	218,678	18.5
	Age 35 to 44	163	12.8	184,081	15.6	98	14.2	65	11.1	184,081	15.6
	Age 45 to 54	230	18.0	200,478	17.0	114	16.5	116	19.8	200,478	17.0
	Age 55 to 64	249	19.5	176,644	15.0	125	18.1	124	21.2	180,766	15.3

	Age 65 or older	328	25.7	188,291	16.0	159	23.0	169	28.9	188,291	16.0
	White - Non-Hispanic	1,002	79.3	878,675	75.6	527	76.8	475	82.2	919,664	78.6
	Black - Non-Hispanic	165	13.1	177,373	15.3	100	14.6	65	11.2	171,741	14.7
	Other race only, Non-Hispanic	30	2.4	38,302	3.3	17	2.5	13	2.2	27,588	2.4
	Multiracial, Non-Hispanic	39	3.1	18,343	1.6	24	3.5	15	2.6	18,873	1.6
	Hispanic	28	2.2	49,570	4.3	18	2.6	10	1.7	32,239	2.8
Minnesota	Male	614	34.9	171,924	37.7	323	36.0	291	33.8	171,924	37.7
	Female	1,143	65.1	283,878	62.3	573	64.0	570	66.2	283,878	62.3
	Age 18 to 24	161	9.3	77,657	17.2	84	9.6	77	8.9	77,657	17.0
	Age 25 to 34	235	13.5	90,314	20.0	129	14.7	106	12.3	91,036	20.0
	Age 35 to 44	227	13.1	73,259	16.2	119	13.6	108	12.5	73,698	16.2
	Age 45 to 54	313	18.0	73,708	16.3	167	19.0	146	17.0	75,826	16.6
	Age 55 to 64	323	18.6	60,092	13.3	142	16.2	181	21.0	61,273	13.4
	Age 65 or older	479	27.6	76,312	16.9	236	26.9	243	28.2	76,312	16.7
	White - Non-Hispanic	1,520	87.6	364,729	81.0	756	85.5	764	89.7	375,205	83.3
	Black - Non-Hispanic	80	4.6	34,211	7.6	51	5.8	29	3.4	27,528	6.1
	Other race only, Non-Hispanic	61	3.5	20,276	4.5	40	4.5	21	2.5	13,068	2.9
	Multiracial, Non-Hispanic	29	1.7	9,030	2.0	14	1.6	15	1.8	12,440	2.8
	Hispanic	46	2.6	22,042	4.9	23	2.6	23	2.7	22,028	4.9
Mississippi	Male	186	28.9	123,341	46.5	131	31.6	55	24.0	123,341	46.5
	Female	457	71.1	142,089	53.5	283	68.4	174	76	142,089	53.5
	Age 18 to 24	32	5.0	50,211	19.1	23	5.6	9	3.9	59,392	22.4
	Age 25 to 34	45	7.0	35,989	13.7	39	9.5	6	2.6	22,319	8.4
	Age 35 to 44	71	11.1	52,170	19.8	55	13.3	16	7.0	56,658	21.3

	Age 45 to 54	114	17.8	46,551	17.7	69	16.7	45	19.7	48,531	18.3
	Age 55 to 64	161	25.1	38,896	14.8	100	24.3	61	26.6	38,896	14.7
	Age 65 or older	218	34.0	39,592	15.0	126	30.6	92	40.2	39,632	14.9
	White - Non-Hispanic	369	57.5	145,652	55.0	234	56.7	135	59.0	150,103	56.6
	Black - Non-Hispanic	253	39.4	108,286	40.9	167	40.4	86	37.6	99,330	37.4
	Other race only, Non-Hispanic	8	1.2	1,403	0.5	6	1.5	2	0.9	481	0.2
	Multiracial, Non-Hispanic	6	0.9	1,955	0.7	4	1.0	2	0.9	794	0.3
	Hispanic	6	0.9	7,479	2.8	2	0.5	4	1.7	14,721	5.5
Missouri	Male	301	33.4	245,340	40.8	228	36.1	73	27	245,340	40.8
	Female	600	66.6	356,375	59.2	403	63.9	197	73	356,375	59.2
	Age 18 to 24	65	7.3	91,560	15.4	54	8.6	11	4.1	101,839	17.1
	Age 25 to 34	87	9.8	97,737	16.4	68	10.9	19	7.1	90,986	15.3
	Age 35 to 44	107	12.0	119,631	20.1	79	12.6	28	10.5	117,430	19.7
	Age 45 to 54	160	17.9	95,211	16.0	105	16.8	55	20.7	93,958	15.8
	Age 55 to 64	185	20.7	84,251	14.1	125	20.0	60	22.6	83,354	14
	Age 65 or older	288	32.3	107,424	18.0	195	31.2	93	35.0	107,576	18.1
	White - Non-Hispanic	725	81.7	473,170	80.4	501	80.8	224	83.9	502,268	85.6
	Black - Non-Hispanic	98	11.0	59,678	10.1	73	11.8	25	9.4	44,997	7.7
	Other race only, Non-Hispanic	21	2.4	10,927	1.9	14	2.3	7	2.6	13,745	2.3
	Multiracial, Non-Hispanic	21	2.4	10,818	1.8	14	2.3	7	2.6	17,268	2.9
	Hispanic	22	2.5	33,884	5.8	18	2.9	4	1.5	8,795	1.5
Montana	Male	254	35.8	39,522	39.8	182	36.5	72	34.0	39,522	39.8
	Female	456	64.2	59,870	60.2	316	63.5	140	66.0	59,870	60.2
	Age 18 to 24	43	6.1	13,585	13.8	34	6.9	9	4.2	14,606	14.7

	Age 25 to 34	65	9.2	15,682	15.9	57	11.6	8	3.8	7,095	7.1
	Age 35 to 44	71	10.1	15,847	16.1	50	10.2	21	9.9	23,413	23.6
	Age 45 to 54	110	15.6	16,388	16.6	81	16.5	29	13.7	16,388	16.5
	Age 55 to 64	179	25.4	20,638	20.9	115	23.4	64	30.2	21,406	21.5
	Age 65 or older	236	33.5	16,483	16.7	155	31.5	81	38.2	16,483	16.6
	White - Non-Hispanic	584	83.4	83,898	85.8	405	82.5	179	85.6	88,622	89.5
	Other race only, Non-Hispanic	85	12.1	8,549	8.7	60	12.2	25	12.0	8,970	9.1
	Multiracial, Non-Hispanic	16	2.3	1,067	1.1	13	2.6	3	1.4	587	0.6
	Hispanic	15	2.1	4,313	4.4	13	2.6	2	1.0	860	0.9
Nebraska	Male	736	37.7	74,611	43.9	448	37.1	288	38.8	74,611	43.9
	Female	1,215	62.3	95,508	56.1	760	62.9	455	61.2	95,508	56.1
	Age 18 to 24	166	8.6	32,312	19.1	114	9.5	52	7.0	32,312	19.0
	Age 25 to 34	235	12.1	31,933	18.9	178	14.9	57	7.7	31,933	18.8
	Age 35 to 44	247	12.8	27,853	16.5	172	14.4	75	10.1	27,853	16.4
	Age 45 to 54	273	14.1	22,795	13.5	159	13.3	114	15.3	23,081	13.6
	Age 55 to 64	414	21.4	25,582	15.1	223	18.7	191	25.7	26,157	15.4
	Age 65 or older	602	31.1	28,721	17.0	348	29.1	254	34.2	28,784	16.9
	White - Non-Hispanic	1,727	89.4	140,413	83.2	1,070	89.6	657	89.1	136,750	80.7
	Black - Non-Hispanic	58	3.0	10,526	6.2	37	3.1	21	2.8	12,105	7.1
	Other race only, Non-Hispanic	50	2.6	5,251	3.1	25	2.1	25	3.4	6,307	3.7
	Multiracial, Non-Hispanic	35	1.8	4,135	2.5	24	2.0	11	1.5	2,840	1.7
	Hispanic	61	3.2	8,454	5.0	38	3.2	23	3.1	11,497	6.8
Nevada	Male	113	29.2	89,302	36.0	68	29.6	45	28.7	89,302	36.0
	Female	274	70.8	158,862	64.0	162	70.4	112	71.3	158,862	64.0

	Age 18 to 24	25	6.5	36,056	14.7	17	7.5	8	5.1	26,203	10.7
	Age 25 to 34	43	11.2	46,061	18.8	30	13.2	13	8.3	45,558	18.6
	Age 35 to 44	48	12.5	46,943	19.1	31	13.6	17	10.9	57,299	23.4
	Age 45 to 54	61	15.9	32,108	13.1	33	14.5	28	17.9	30,023	12.3
	Age 55 to 64	80	20.8	47,124	19.2	43	18.9	37	23.7	48,138	19.7
	Age 65 or older	127	33.1	37,160	15.1	74	32.5	53	34.0	37,160	15.2
	White - Non-Hispanic	282	74.0	128,027	52.5	157	70.1	125	79.6	141,536	57.0
	Black - Non-Hispanic	23	6.0	38,183	15.7	13	5.8	10	6.4	53,761	21.7
	Other race only, Non-Hispanic	23	6.0	30,166	12.4	20	8.9	3	1.9	6,864	2.8
	Multiracial, Non-Hispanic	14	3.7	4,079	1.7	9	4.0	5	3.2	7,007	2.8
	Hispanic	39	10.2	43,295	17.8	25	11.2	14	8.9	38,997	15.7
New Hampshire	Male	304	31.5	62,119	40.1	196	29.7	108	35.4	62,119	40.1
	Female	662	68.5	92,935	59.9	465	70.3	197	64.6	92,935	59.9
	Age 18 to 24	41	4.3	22,954	14.9	33	5.0	8	2.6	15,938	10.3
	Age 25 to 34	69	7.2	26,831	17.4	51	7.8	18	5.9	33,847	21.9
	Age 35 to 44	104	10.9	27,601	17.9	77	11.8	27	8.9	27,601	17.8
	Age 45 to 54	183	19.1	27,525	17.8	133	20.3	50	16.4	27,963	18.1
	Age 55 to 64	246	25.7	24,530	15.9	163	24.9	83	27.3	24,643	15.9
	Age 65 or older	315	32.9	24,905	16.1	197	30.1	118	38.8	24,905	16.1
	White - Non-Hispanic	900	94.2	139,731	90.8	609	93.7	291	95.4	140,243	90.4
	Black - Non-Hispanic	11	1.2	2,765	1.8	6	0.9	5	1.6	5,973	3.9
	Other race only, Non-Hispanic	18	1.9	3,905	2.5	15	2.3	3	1.0	2,866	1.8
	Multiracial, Non-Hispanic	14	1.5	3,485	2.3	9	1.4	5	1.6	5,465	3.5
	Hispanic	12	1.3	4,077	2.6	11	1.7	1	0.3	507	0.3



New Jersey	Male	407	31.3	319,179	40.4	207	31.6	200	31.0	319,179	40.4
	Female	893	68.7	471,815	59.6	448	68.4	445	69.0	471,815	59.6
	Age 18 to 24	87	6.8	106,376	13.6	40	6.3	47	7.3	106,376	13.4
	Age 25 to 34	152	11.9	149,745	19.1	92	14.4	60	9.3	150,905	19.1
	Age 35 to 44	184	14.4	132,131	16.9	102	16.0	82	12.7	132,699	16.8
	Age 45 to 54	256	20.0	141,107	18	129	20.3	127	19.7	143,433	18.1
	Age 55 to 64	278	21.7	112,509	14.4	132	20.7	146	22.6	116,886	14.8
	Age 65 or older	325	25.4	140,695	18	142	22.3	183	28.4	140,695	17.8
	White - Non-Hispanic	800	62.9	422,093	54.4	388	60.9	412	65.0	470,803	60.1
	Black - Non-Hispanic	231	18.2	154,534	19.9	123	19.3	108	17.0	140,703	18.0
	Other race only, Non-Hispanic	52	4.1	47,986	6.2	25	3.9	27	4.3	39,020	5.0
	Multiracial, Non-Hispanic	23	1.8	15,376	2.0	10	1.6	13	2.1	15,889	2.0
	Hispanic	165	13.0	135,529	17.5	91	14.3	74	11.7	116,382	14.9
New Mexico	Male	327	34.6	94,252	41.2	191	33.9	136	35.6	94,252	41.2
	Female	618	65.4	134,307	58.8	372	66.1	246	64.4	134,307	58.8
	Age 18 to 24	64	6.8	42,262	18.7	47	8.5	17	4.5	37,987	16.7
	Age 25 to 34	89	9.5	39,865	17.6	54	9.7	35	9.2	53,229	23.4
	Age 35 to 44	105	11.2	33,925	15.0	70	12.6	35	9.2	24,835	10.9
	Age 45 to 54	138	14.7	30,311	13.4	87	15.6	51	13.4	30,924	13.6
	Age 55 to 64	239	25.5	38,865	17.2	130	23.4	109	28.6	39,235	17.3
	Age 65 or older	302	32.2	41,210	18.2	168	30.2	134	35.2	41,210	18.1
	White - Non-Hispanic	549	59.9	106,604	47.6	308	57.0	241	63.9	111,635	50.1
	Black - Non-Hispanic	12	1.3	4,084	1.8	6	1.1	6	1.6	3,957	1.8
	Other race only, Non-Hispanic	88	9.6	19,668	8.8	57	10.6	31	8.2	24,591	11.0

	Multiracial, Non-Hispanic	14	1.5	3,444	1.5	8	1.5	6	1.6	1,009	0.5
	Hispanic	254	27.7	90,007	40.2	161	29.8	93	24.7	81,809	36.7
New York	Male	273	32.0	945,218	40.7	170	32.4	103	31.2	945,218	40.7
	Female	581	68.0	1,378,503	59.3	354	67.6	227	68.8	1,378,503	59.3
	Age 18 to 24	47	5.6	394,680	17.1	37	7.2	10	3.0	234,242	10.1
	Age 25 to 34	86	10.2	403,853	17.5	57	11.0	29	8.8	564,291	24.3
	Age 35 to 44	117	13.8	372,572	16.2	84	16.2	33	10.1	380,652	16.4
	Age 45 to 54	163	19.3	376,478	16.3	114	22.1	49	14.9	377,153	16.3
	Age 55 to 64	171	20.2	332,792	14.4	87	16.8	84	25.6	337,117	14.5
	Age 65 or older	261	30.9	426,324	18.5	138	26.7	123	37.5	426,324	18.4
	White - Non-Hispanic	544	65.3	1,236,769	54.2	303	59.4	241	74.6	1,507,558	65.6
	Black - Non-Hispanic	108	13.0	344,612	15.1	75	14.7	33	10.2	317,379	13.8
	Other race only, Non-Hispanic	29	3.5	141,573	6.2	21	4.1	8	2.5	58,834	2.6
	Multiracial, Non-Hispanic	9	1.1	25,201	1.1	5	1.0	4	1.2	44,225	1.9
	Hispanic	143	17.2	534,447	23.4	106	20.8	37	11.5	370,598	16.1
Ohio	Male	460	30.8	449,358	37.4	293	31.4	167	29.8	449,358	37.4
	Female	1,034	69.2	750,894	62.6	640	68.6	394	70.2	750,894	62.6
	Age 18 to 24	69	4.7	215,925	18.1	48	5.2	21	3.7	221,699	18.5
	Age 25 to 34	109	7.4	178,832	15.0	75	8.2	34	6.1	173,058	14.4
	Age 35 to 44	149	10.1	169,311	14.2	97	10.6	52	9.3	169,311	14.1
	Age 45 to 54	259	17.5	218,827	18.3	157	17.1	102	18.2	219,413	18.3
	Age 55 to 64	369	25	203,085	17.0	232	25.3	137	24.4	208,062	17.3
	Age 65 or older	522	35.3	208,040	17.4	307	33.5	215	38.3	208,709	17.4
	White - Non-Hispanic	1,276	86.6	931,763	79.1	795	86.6	481	86.7	984,948	83.1

	Black - Non-Hispanic	116	7.9	166,938	14.2	80	8.7	36	6.5	103,567	8.7
	Other race only, Non-Hispanic	24	1.6	15,324	1.3	12	1.3	12	2.2	7,639	0.6
	Multiracial, Non-Hispanic	36	2.4	23,450	2.0	18	2.0	18	3.2	38,837	3.3
	Hispanic	21	1.4	40,911	3.5	13	1.4	8	1.4	49,934	4.2
Oregon	Male	309	36.1	212,590	41.1	196	36.8	113	35.0	212,590	41.1
	Female	547	63.9	304,574	58.9	337	63.2	210	65.0	304,574	58.9
	Age 18 to 24	50	5.9	58,574	11.4	38	7.2	12	3.7	44,099	8.5
	Age 25 to 34	90	10.6	99,463	19.4	61	11.6	29	9.0	113,937	22.1
	Age 35 to 44	114	13.4	90,441	17.6	84	16.0	30	9.3	90,441	17.5
	Age 45 to 54	140	16.5	93,895	18.3	92	17.5	48	14.9	94,981	18.4
	Age 55 to 64	171	20.2	81,161	15.8	98	18.6	73	22.7	81,562	15.8
	Age 65 or older	283	33.4	90,272	17.6	153	29.1	130	40.4	91,207	17.7
	White - Non-Hispanic	712	85.0	418,158	82.5	442	85.2	270	84.6	407,577	79.2
	Black - Non-Hispanic	10	1.2	12,377	2.4	5	1.0	5	1.6	20,390	4.0
	Other race only, Non-Hispanic	24	2.9	16,759	3.3	14	2.7	10	3.1	20,105	3.9
	Multiracial, Non-Hispanic	57	6.8	14,919	2.9	32	6.2	25	7.8	26,193	5.1
	Hispanic	35	4.2	44,841	8.8	26	5.0	9	2.8	40,524	7.9
Pennsylvania	Male	253	33.7	553,830	38.8	158	35.3	95	31.4	553,830	38.8
	Female	497	66.3	873,609	61.2	289	64.7	208	68.6	873,609	61.2
	Age 18 to 24	72	9.7	239,865	17	55	12.5	17	5.6	254,195	17.8
	Age 25 to 34	91	12.2	262,081	18.6	69	15.6	22	7.3	247,751	17.4
	Age 35 to 44	101	13.6	217,172	15.4	69	15.6	32	10.6	220,807	15.5
	Age 45 to 54	120	16.1	237,550	16.8	75	17.0	45	14.9	243,782	17.1
	Age 55 to 64	167	22.4	230,485	16.3	82	18.6	85	28.1	234,765	16.4

	Age 65 or older	193	25.9	225,608	16	91	20.6	102	33.7	226,139	15.8
	White - Non-Hispanic	606	82.3	1,069,520	76.8	347	79.6	259	86.3	1,234,227	87.4
	Black - Non-Hispanic	71	9.6	147,883	10.6	49	11.2	22	7.3	77,438	5.5
	Other race only, Non-Hispanic	10	1.4	16,528	1.2	6	1.4	4	1.3	12,824	0.9
	Multiracial, Non-Hispanic	20	2.7	26,136	1.9	12	2.8	8	2.7	44,788	3.2
	Hispanic	29	3.9	132,933	9.5	22	5.0	7	2.3	43,056	3.0
Rhode Island	Male	313	32.5	54,455	41.0	213	31.8	100	34.1	54,455	41.0
	Female	650	67.5	78,437	59.0	457	68.2	193	65.9	78,437	59.0
	Age 18 to 24	44	4.6	19,095	14.5	38	5.8	6	2.1	19,782	14.9
	Age 25 to 34	94	9.9	26,426	20.0	77	11.7	17	5.8	25,740	19.4
	Age 35 to 44	116	12.2	21,597	16.4	95	14.4	21	7.2	21,597	16.3
	Age 45 to 54	162	17.0	21,015	15.9	120	18.2	42	14.4	21,435	16.2
	Age 55 to 64	235	24.7	22,430	17.0	159	24.1	76	26.1	22,524	17.0
	Age 65 or older	300	31.5	21,441	16.2	171	25.9	129	44.3	21,518	16.2
	White - Non-Hispanic	794	83.9	100,215	76.6	533	81.3	261	90.0	106,797	80.7
	Black - Non-Hispanic	32	3.4	6,485	5.0	26	4.0	6	2.1	1,790	1.4
	Other race only, Non-Hispanic	34	3.6	6,759	5.2	28	4.3	6	2.1	6,694	5.1
	Multiracial, Non-Hispanic	15	1.6	2,025	1.5	14	2.1	1	0.3	87	0.1
	Hispanic	71	7.5	15,288	11.7	55	8.4	16	5.5	16,921	12.8
Texas	Male	561	31.7	891,380	43.0	377	32.2	184	30.8	891,380	43.0
	Female	1,209	68.3	1,183,321	57.0	795	67.8	414	69.2	1,183,321	57.0
	Age 18 to 24	126	7.2	396,029	19.2	90	7.8	36	6.1	486,537	23.5
	Age 25 to 34	154	8.8	375,741	18.2	110	9.5	44	7.4	367,413	17.7
	Age 35 to 44	174	10.0	272,960	13.2	142	12.3	32	5.4	192,733	9.3

	Age 45 to 54	252	14.4	328,930	15.9	168	14.6	84	14.1	330,591	15.9
	Age 55 to 64	383	21.9	317,967	15.4	236	20.5	147	24.7	319,980	15.4
	Age 65 or older	658	37.7	373,946	18.1	407	35.3	251	42.3	376,216	18.1
	White - Non-Hispanic	1,124	65.0	1,107,716	54.2	706	62.0	418	71.0	1,367,322	66.8
	Black - Non-Hispanic	185	10.7	302,221	14.8	135	11.9	50	8.5	158,487	7.7
	Other race only, Non-Hispanic	45	2.6	71,240	3.5	33	2.9	12	2.0	64,482	3.1
	Multiracial, Non-Hispanic	26	1.5	29,139	1.4	18	1.6	8	1.4	18,952	0.9
	Hispanic	348	20.1	532,991	26.1	247	21.7	101	17.1	439,047	21.4
Utah	Male	584	38.4	115,829	40.9	350	37.8	234	39.3	115,829	40.9
	Female	938	61.6	167,698	59.1	577	62.2	361	60.7	167,698	59.1
	Age 18 to 24	161	10.7	55,858	19.9	110	12.1	51	8.6	55,858	19.7
	Age 25 to 34	222	14.7	57,758	20.6	143	15.7	79	13.3	57,758	20.4
	Age 35 to 44	238	15.8	46,292	16.5	159	17.4	79	13.3	46,717	16.5
	Age 45 to 54	252	16.7	43,247	15.4	148	16.2	104	17.5	44,320	15.6
	Age 55 to 64	258	17.1	34,679	12.3	151	16.6	107	18.0	35,412	12.5
	Age 65 or older	375	24.9	43,196	15.4	201	22.0	174	29.3	43,196	15.2
	White - Non-Hispanic	1,334	88.6	231,189	82.8	803	87.7	531	90.2	233,897	83.7
	Black - Non-Hispanic	11	0.7	3,998	1.4	8	0.9	3	0.5	1,954	0.7
	Other race only, Non-Hispanic	47	3.1	13,506	4.8	33	3.6	14	2.4	9,860	3.5
	Multiracial, Non-Hispanic	18	1.2	5,007	1.8	7	0.8	11	1.9	10,458	3.7
	Hispanic	95	6.3	25,464	9.1	65	7.1	30	5.1	23,325	8.3
Vermont	Male	328	33.9	30,996	38.3	217	36.0	111	30.4	30,996	38.3
	Female	640	66.1	49,968	61.7	386	64.0	254	69.6	49,968	61.7
	Age 18 to 24	74	7.7	13,765	17.1	50	8.4	24	6.6	13,765	17.0

	Age 25 to 34	111	11.5	13,649	16.9	77	12.9	34	9.3	13,649	16.9
	Age 35 to 44	133	13.8	13,033	16.2	84	14.1	49	13.4	13,033	16.1
	Age 45 to 54	186	19.3	15,075	18.7	124	20.8	62	17.0	15,146	18.7
	Age 55 to 64	197	20.5	11,248	14.0	107	17.9	90	24.7	11,536	14.2
	Age 65 or older	261	27.1	13,834	17.2	155	26.0	106	29.0	13,834	17.1
	White - Non-Hispanic	877	91.9	73,894	92.5	542	91.9	335	92.0	70,863	88.0
	Other race only, Non-Hispanic	35	3.7	2,770	3.5	23	3.9	12	3.3	3,583	4.5
	Multiracial, Non-Hispanic	26	2.7	1,978	2.5	15	2.5	11	3.0	4,517	5.6
	Hispanic	13	1.4	814	1.0	7	1.2	6	1.6	1,528	1.9
Wisconsin	Male	272	34.0	216,079	38.7	147	35.9	125	31.9	216,079	38.7
	Female	529	66.0	342,062	61.3	262	64.1	267	68.1	342,062	61.3
	Age 18 to 24	69	8.7	112,475	20.3	41	10.1	28	7.2	111,404	20.0
	Age 25 to 34	90	11.3	91,343	16.5	61	15.1	29	7.4	92,154	16.6
	Age 35 to 44	104	13.1	90,575	16.3	54	13.4	50	12.8	90,575	16.3
	Age 45 to 54	137	17.3	95,364	17.2	60	14.9	77	19.7	95,335	17.1
	Age 55 to 64	171	21.5	75,608	13.6	77	19.1	94	24.1	76,945	13.8
	Age 65 or older	223	28.1	89,577	16.1	111	27.5	112	28.7	89,577	16.1
	White - Non-Hispanic	638	80.2	442,129	79.7	322	79.5	316	80.8	475,090	85.4
	Black - Non-Hispanic	88	11.1	50,196	9.0	45	11.1	43	11	25,856	4.6
	Other race only, Non-Hispanic	22	2.8	19,138	3.4	12	3	10	2.6	18,915	3.4
	Multiracial, Non-Hispanic	17	2.1	8,374	1.5	5	1.2	12	3.1	9,302	1.7
	Hispanic	31	3.9	35,057	6.3	21	5.2	10	2.6	27,322	4.9
Puerto Rico	Male	253	28.0	187,717	40.5	142	30.9	111	24.9	187,717	40.5
	Female	651	72.0	275,467	59.5	317	69.1	334	75.1	275,467	59.5

	<b>Age 18 to 24</b>	<b>91</b>	<b>10.2</b>	<b>81,603</b>	<b>17.8</b>	<b>50</b>	<b>11.2</b>	<b>41</b>	<b>9.2</b>	<b>81,603</b>	<b>17.6</b>
	<b>Age 25 to 34</b>	<b>114</b>	<b>12.8</b>	<b>77,634</b>	<b>17.0</b>	<b>75</b>	<b>16.7</b>	<b>39</b>	<b>8.8</b>	<b>77,634</b>	<b>16.8</b>
	<b>Age 35 to 44</b>	<b>110</b>	<b>12.3</b>	<b>71,849</b>	<b>15.7</b>	<b>70</b>	<b>15.6</b>	<b>40</b>	<b>9.0</b>	<b>71,849</b>	<b>15.5</b>
	<b>Age 45 to 54</b>	<b>144</b>	<b>16.1</b>	<b>70,340</b>	<b>15.4</b>	<b>67</b>	<b>15</b>	<b>77</b>	<b>17.3</b>	<b>72,521</b>	<b>15.7</b>
	<b>Age 55 to 64</b>	<b>192</b>	<b>21.5</b>	<b>79,518</b>	<b>17.4</b>	<b>80</b>	<b>17.9</b>	<b>112</b>	<b>25.2</b>	<b>82,221</b>	<b>17.8</b>
	<b>Age 65 or older</b>	<b>241</b>	<b>27.0</b>	<b>76,580</b>	<b>16.7</b>	<b>106</b>	<b>23.7</b>	<b>135</b>	<b>30.4</b>	<b>76,580</b>	<b>16.6</b>
	<b>White - Non-Hispanic</b>	<b>4</b>	<b>0.4</b>	<b>1,147</b>	<b>0.2</b>	<b>3</b>	<b>0.7</b>	<b>1</b>	<b>0.2</b>	<b>584</b>	<b>0.1</b>
	<b>Other race only, Non-Hispanic</b>	<b>4</b>	<b>0.4</b>	<b>2,132</b>	<b>0.5</b>	<b>.</b>	<b>.</b>	<b>4</b>	<b>0.9</b>	<b>5,012</b>	<b>1.1</b>
	<b>Hispanic</b>	<b>896</b>	<b>99.1</b>	<b>459,905</b>	<b>99.3</b>	<b>456</b>	<b>99.3</b>	<b>440</b>	<b>98.9</b>	<b>457,587</b>	<b>98.8</b>

\* Florida didn't collect the January - April cell phone data

\*\* adult: aged  $\geq 18$

Table 1B. Percent of ACBS child\* respondents, non-respondents and BRFSS eligible asthma respondents by demographic groups and state/territory

<i>Child</i>		<i>BRFSS</i>				<i>ACBS</i>		<i>ACBS</i>			
		<i>Eligible Asthma Respondents</i>				<i>Non-Respondents</i>		<i>Respondents</i>			
<i>State</i>	<i>Demographics</i>	<i>Sample size</i>	<i>Percent unweighted</i>	<i>Weighted total</i>	<i>Percent weighted</i>	<i>Sample size</i>	<i>Percent unweighted</i>	<i>Sample size</i>	<i>Percent unweighted</i>	<i>Weighted total</i>	<i>Percent weighted</i>
States/areas total	Boy	2,172	59.2	1,419,151	60.0	1,447	59.5	725	58.6	1,418,454	59.9
	Girl	1,497	40.8	947,072	40.0	984	40.5	513	41.4	949,289	40.1
	Age 0 to 4	341	10.1	303,124	13.9	230	10.6	111	9.2	273,810	11.5
	Age 5 to 9	778	23.1	615,452	28.3	512	23.6	266	22.1	761,087	32.0
	Age 10 to 14	1,207	35.8	775,136	35.6	746	34.3	461	38.4	847,209	35.6
	Age 15 to 17	1,048	31.1	483,174	22.2	684	31.5	364	30.3	499,692	21.0
	White only	2,744	76.3	1,534,192	66.6	1,799	75.6	945	77.8	1,538,150	67.7
	Black or African American only	397	11.0	439,512	19.1	278	11.7	119	9.8	456,758	20.1
	Other Races and Multiracial	455	12.7	329,607	14.3	304	12.8	151	12.4	278,492	12.3
Connecticut	Boy	214	58.8	69,465	58.1	148	59.4	66	57.4	69,902	58.2
	Girl	150	41.2	50,140	41.9	101	40.6	49	42.6	50,140	41.8
	Age 0 to 4	32	9.4	17,470	15.5	23	9.8	9	8.3	17,114	14.3
	Age 5 to 9	82	24.0	28,702	25.4	58	24.8	24	22.2	29,059	24.2
	Age 10 to 14	134	39.2	42,875	37.9	85	36.3	49	45.4	47,636	39.7
	Age 15 to 17	94	27.5	23,945	21.2	68	29.1	26	24.1	26,234	21.9
	White only	239	68.5	69,810	60.9	165	69.3	74	66.7	73,428	63.9
	Black or African American only	50	14.3	23,317	20.3	36	15.1	14	12.6	21,738	18.9
	Other Races and Multiracial	60	17.2	21,464	18.7	37	15.5	23	20.7	19,800	17.2
Kansas	Boy	371	57.9	50,056	58.8	273	58.5	98	56.3	50,118	59.0



	Girl	270	42.1	35,003	41.2	194	41.5	76	43.7	34,874	41.0
	Age 0 to 4	70	11.6	10,257	12.7	55	12.6	15	8.9	11,388	13.4
	Age 5 to 9	135	22.3	22,310	27.7	103	23.6	32	18.9	23,563	27.7
	Age 10 to 14	207	34.2	27,503	34.2	139	31.9	68	40.2	29,331	34.4
	Age 15 to 17	193	31.9	20,424	25.4	139	31.9	54	32.0	20,902	24.5
	White only	502	80.6	61,185	74.4	361	80.0	141	82.0	64,661	77.4
	Black or African American only	63	10.1	11,616	14.1	50	11.1	13	7.6	6,405	7.7
	Other Races and Multiracial	58	9.3	9,410	11.4	40	8.9	18	10.5	12,520	15.0
Michigan	Boy	167	65.2	159,606	64.9	98	64.5	69	66.3	160,861	65.1
	Girl	89	34.8	86,321	35.1	54	35.5	35	33.7	86,321	34.9
	Age 0 to 4	15	6.1	21,045	9.0	7	5.0	8	7.8	19,089	7.7
	Age 5 to 9	57	23.4	73,508	31.3	35	24.8	22	21.4	81,584	33.0
	Age 10 to 14	86	35.2	79,256	33.8	48	34.0	38	36.9	81,546	33.0
	Age 15 to 17	86	35.2	60,791	25.9	51	36.2	35	34.0	64,964	26.3
	White only	180	70.3	159,630	64.9	102	66.7	78	75.7	174,649	70.7
	Black or African American only	49	19.1	60,045	24.4	35	22.9	14	13.6	45,050	18.2
	Other Races and Multiracial	27	10.5	26,177	10.6	16	10.5	11	10.7	27,484	11.1
Minnesota	Boy	199	55.6	62,969	54.7	117	55.5	82	55.8	62,969	54.7
	Girl	159	44.4	52,098	45.3	94	44.5	65	44.2	52,098	45.3
	Age 0 to 4	33	10.4	11,196	10.8	15	8.8	18	12.2	12,948	11.3
	Age 5 to 9	60	18.9	28,360	27.4	35	20.6	25	17.0	33,397	29.0
	Age 10 to 14	119	37.5	34,281	33.1	61	35.9	58	39.5	38,947	33.8
	Age 15 to 17	105	33.1	29,776	28.7	59	34.7	46	31.3	29,776	25.9
	White only	278	77.9	74,590	65.7	160	76.2	118	80.3	75,540	65.6
	Black or African American only	29	8.1	17,208	15.2	19	9.0	10	6.8	16,351	14.2
	Other Races and Multiracial	50	14.0	21,737	19.1	31	14.8	19	12.9	23,177	20.1
Nebraska	Boy	215	60.1	25,886	58.7	135	59.0	80	62.0	25,886	58.7

	Girl	143	39.9	18,179	41.3	94	41.0	49	38.0	18,179	41.3
	Age 0 to 4	23	6.9	4,781	11.6	17	8.1	6	4.8	4,768	10.8
	Age 5 to 9	67	20.0	9,073	22.0	38	18.1	29	23.2	10,472	23.8
	Age 10 to 14	124	37.0	16,045	39.0	75	35.7	49	39.2	17,290	39.2
	Age 15 to 17	121	36.1	11,284	27.4	80	38.1	41	32.8	11,536	26.2
	White only	292	83.0	31,387	72.0	183	81.3	109	85.8	31,475	71.8
	Black or African American only	19	5.4	6,037	13.8	11	4.9	8	6.3	7,488	17.1
	Other Races and Multiracial	41	11.6	6,176	14.2	31	13.8	10	7.9	4,868	11.1
New Jersey	Boy	215	60.1	142,704	61.8	128	62.7	87	56.5	142,860	61.5
	Girl	143	39.9	88,291	38.2	76	37.3	67	43.5	89,333	38.5
	Age 0 to 4	30	9.4	32,612	15.7	19	11.4	11	7.2	31,910	13.7
	Age 5 to 9	81	25.3	49,819	24.0	43	25.7	38	24.8	66,609	28.7
	Age 10 to 14	117	36.6	82,221	39.6	59	35.3	58	37.9	88,994	38.3
	Age 15 to 17	92	28.8	42,971	20.7	46	27.5	46	30.1	44,680	19.2
	White only	191	55.4	114,446	52.5	103	52.0	88	59.9	126,554	57.4
	Black or African American only	95	27.5	60,436	27.7	62	31.3	33	22.4	53,428	24.2
	Other Races and Multiracial	59	17.1	43,016	19.7	33	16.7	26	17.7	40,610	18.4
Ohio	Boy	100	52.6	176,970	53.0	57	51.4	43	54.4	177,756	53.1
	Girl	90	47.4	156,821	47.0	54	48.6	36	45.6	156,821	46.9
	Age 0 to 4	19	11.1	32,918	11.0	9	9.8	10	12.7	48,637	14.5
	Age 5 to 9	41	24.0	95,543	31.9	23	25.0	18	22.8	103,472	30.9
	Age 10 to 14	53	31.0	99,558	33.3	31	33.7	22	27.8	110,401	33.0
	Age 15 to 17	58	33.9	71,281	23.8	29	31.5	29	36.7	72,067	21.5
	White only	144	76.6	183,814	55.7	81	74.3	63	79.7	238,589	71.3
	Black or African American only	25	13.3	91,344	27.7	17	15.6	8	10.1	62,550	18.7
	Other Races and Multiracial	19	10.1	55,006	16.7	11	10.1	8	10.1	33,437	10.0
Texas	Boy	251	63.9	556,981	63.0	184	63.2	67	65.7	553,132	62.8

	Girl	142	36.1	327,423	37.0	107	36.8	35	34.3	327,781	37.2
	Age 0 to 4	37	10.5	128,987	15.9	30	11.8	7	7.3	75,215	8.4
	Age 5 to 9	92	26.2	242,430	29.8	68	26.7	24	25.0	338,121	37.8
	Age 10 to 14	126	35.9	282,882	34.8	90	35.3	36	37.5	318,318	35.6
	Age 15 to 17	96	27.4	158,518	19.5	67	26.3	29	30.2	163,121	18.2
	White only	311	81.6	614,049	72	232	81.7	79	81.4	533,324	65.6
	Black or African American only	48	12.6	158,900	18.6	33	11.6	15	15.5	232,851	28.6
	Other Races and Multiracial	22	5.8	79,485	9.3	19	6.7	3	3.1	46,771	5.8
Utah	Boy	258	60.8	59,142	63.3	179	61.3	79	59.8	59,598	63.3
	Girl	166	39.2	34,220	36.7	113	38.7	53	40.2	34,523	36.7
	Age 0 to 4	29	7.5	8,130	9.8	19	7.3	10	7.9	8,651	9.2
	Age 5 to 9	93	24.0	22,007	26.6	60	23	33	26.2	27,751	29.5
	Age 10 to 14	141	36.4	27,083	32.7	92	35.2	49	38.9	31,002	32.9
	Age 15 to 17	124	32.0	25,660	31.0	90	34.5	34	27.0	26,717	28.4
	White only	387	92.6	77,006	86.1	261	90.6	126	96.9	80,961	94.1
	Black or African American only	7	1.7	2,774	3.1	5	1.7	2	1.5	4,083	4.7
	Other Races and Multiracial	24	5.7	9,620	10.8	22	7.6	2	1.5	1,019	1.2
Puerto Rico	Boy	182	55.7	115,371	53.9	128	56.9	54	52.9	115,371	53.8
	Girl	145	44.3	98,577	46.1	97	43.1	48	47.1	99,219	46.2
	Age 0 to 4	53	17.5	35,727	17.7	36	17.5	17	17.7	44,090	20.5
	Age 5 to 9	70	23.2	43,700	21.7	49	23.8	21	21.9	47,058	21.9
	Age 10 to 14	100	33.1	83,433	41.4	66	32.0	34	35.4	83,746	39.0
	Age 15 to 17	79	26.2	38,525	19.1	55	26.7	24	25.0	39,696	18.5
	White only	220	67.3	148,275	69.4	151	67.1	69	67.6	138,970	64.8
	Black or African American only	12	3.7	7,835	3.7	10	4.4	2	2.0	6,813	3.2
	Other Races and Multiracial	95	29.1	57,517	26.9	64.0	28.4	31	30.4	68,807	32.1

\*child: aged 0-17

Table 2A. Estimated percent of current asthma status among adult\*\* ever diagnosed with asthma by state/territory

<i>Adult</i>	<i>ACBS Respondents</i>				<i>BRFSS Eligible Asthma Respondents</i>			
<i>State</i>	<i>ACBS Sample size</i>	<i>Current Prevalence (weighted percent)</i>	<i>Standard Error</i>	<i>Confidence Interval</i>	<i>BRFSS Sample size</i>	<i>Current Prevalence (weighted percent)</i>	<i>Standard Error</i>	<i>Confidence Interval</i>
States/areas total	11,311	69.5	0.99	(67.5 - 71.4)	33,342	67.5	0.52	(66.5 - 68.6)
Connecticut	505	71.4	2.98	(65.2 - 76.9)	1,771	66.0	1.68	(62.6 - 69.2)
Florida	322	60.4	4.48	(51.3 - 68.8)	1,047	61.2	2.27	(56.7 - 65.5)
Georgia	249	67.0	4.55	(57.5 - 75.2)	590	67.7	2.76	(62.0 - 72.8)
Hawaii	254	58.0	4.89	(48.2 - 67.2)	1,080	60.5	2.06	(56.4 - 64.5)
Indiana	295	69.3	4.25	(60.4 - 77.0)	749	70.9	2.34	(66.1 - 75.3)
Iowa	262	65.1	4.09	(56.8 - 72.7)	660	62.5	2.60	(57.3 - 67.4)
Kansas	816	70.1	2.19	(65.7 - 74.2)	2,853	66.6	1.12	(64.4 - 68.7)
Maine	363	70.0	3.75	(62.2 - 76.8)	1,302	73.5	1.86	(69.7 - 77.0)
Massachusetts	343	70.2	3.58	(62.8 - 76.7)	1,380	67.9	1.72	(64.5 - 71.2)
Michigan	530	72.8	2.84	(66.9 - 78.0)	1,244	67.0	1.75	(63.5 - 70.4)
Minnesota	824	72.4	1.99	(68.3 - 76.1)	1,705	68.5	1.43	(65.6 - 71.2)
Mississippi	215	68.7	6.44	(55.0 - 79.8)	630	66.3	3.17	(59.9 - 72.2)
Missouri	254	67.8	5.81	(55.6 - 78.0)	878	67.4	2.40	(62.6 - 71.9)
Montana	194	71.8	5.36	(60.3 - 81.1)	688	72.5	2.43	(67.5 - 77.0)
Nebraska	671	61.5	3.53	(54.3 - 68.1)	1,895	61.8	1.91	(58.0 - 65.4)
Nevada	145	68.4	6.95	(53.6 - 80.3)	371	62.3	4.25	(53.7 - 70.2)
New Hampshire	279	68.9	4.85	(58.8 - 77.6)	932	68.1	2.38	(63.2 - 72.5)
New Jersey	603	66.0	3.38	(59.2 - 72.3)	1,256	65.2	2.22	(60.7 - 69.4)
New Mexico	350	75.1	3.67	(67.2 - 81.6)	923	68.3	2.63	(63.0 - 73.2)

New York	306	75.2	3.55	(67.6 - 81.5)	1,668	70.0	1.55	(66.8 - 72.9)
Ohio	521	71.6	3.49	(64.3 - 77.9)	1,454	72.9	2.04	(68.7 - 76.7)
Oregon	277	72.0	3.84	(63.9 - 78.8)	818	65.7	2.10	(61.5 - 69.7)
Pennsylvania	282	69.0	4.58	(59.4 - 77.2)	721	71.1	2.30	(66.4 - 75.4)
Rhode Island	258	77.7	4.65	(67.3 - 85.5)	927	70.7	2.26	(66.1 - 75.0)
Texas	542	69.0	3.62	(61.5 - 75.6)	1,703	66.5	2.15	(62.2 - 70.6)
Utah	533	70.5	2.59	(65.2 - 75.4)	1,478	66.8	1.56	(63.7 - 69.8)
Vermont	346	70.7	3.58	(63.2 - 77.2)	934	70.7	2.01	(66.6 - 74.5)
Wisconsin	343	77.5	3.80	(69.2 - 84.1)	781	74.6	2.34	(69.8 - 78.9)
Puerto Rico	429	63.7	3.57	(56.4 - 70.4)	904	61.7	2.08	(57.5 - 65.7)

\*Florida didn't collect the January - April cell phone data

\*\* adult: aged  $\geq 18$

///

Table 2B. Estimated percent of current asthma status among child\* ever diagnosed with asthma by state/territory

<i>Child</i>	<i>ACBS Respondents</i>				<i>BRFSS Eligible Asthma Respondents</i>			
<i>State</i>	<i>ACBS Sample size</i>	<i>Current Prevalence (weighted percent)</i>	<i>Standard Error</i>	<i>Confidence Interval</i>	<i>BRFSS Sample size</i>	<i>Current Prevalence (weighted percent)</i>	<i>Standard Error</i>	<i>Confidence Interval</i>
States/areas total	1,128	66.2	3.62	(58.7 - 72.9)	3,606	65.3	1.89	(61.5 - 68.9)
Connecticut	97	79.2	4.50	(69.0 - 86.7)	354	73.2	2.91	(67.2 - 78.5)
Kansas	164	76.6	3.63	(68.8 - 83.0)	623	74.5	1.95	(70.5 - 78.1)
Michigan	86	70.4	5.69	(58.2 - 80.2)	250	69.4	3.42	(62.3 - 75.7)
Minnesota	140	64.0	5.05	(53.7 - 73.2)	350	69.7	2.98	(63.5 - 75.2)
Nebraska	117	67.8	6.62	(53.7 - 79.2)	354	70.4	3.60	(62.9 - 77.0)
New Jersey	145	69.4	5.53	(57.7 - 79.1)	348	72.4	3.35	(65.3 - 78.5)
Ohio	75	61.1	7.18	(46.4 - 73.9)	189	53.9	5.70	(42.7 - 64.7)
Texas	94	63.0	8.79	(44.9 - 78.1)	386	62.8	4.30	(54.1 - 70.8)
Utah	117	55.5	5.86	(44.0 - 66.5)	423	67.8	2.86	(62.0 - 73.2)
Puerto Rico	93	73.2	5.24	(61.8 - 82.2)	329	68.1	3.10	(61.7 - 73.8)

\* child: aged 0-17