



Learn more about certified conditions and the
**World Trade Center
Health Program**



www.cdc.gov/wtc/conditions.html



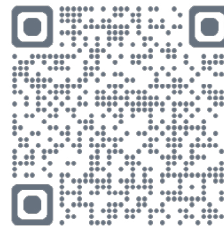
1-888-982-4748

Monday - Friday 8 a.m. to 5 p.m.



wtc@cdc.gov

Scan the QR code with your
mobile device to learn more.



**Do you have health symptoms
that could be related to your
9/11 exposure?**

Members enrolled as either a Survivor
or a Responder in the World Trade
Center (WTC) Health Program may
receive no-cost medical monitoring and
treatment for certified WTC-related
health conditions.



Certified Conditions





What is a certified condition?

A certified WTC-related health condition is a diagnosed condition that is approved for coverage by the WTC Health Program. The Program certifies WTC-related health conditions that are in 5 main categories:



Acute Traumatic Injuries



Musculoskeletal Disorders
(Responders only)



Airway/Digestive Disorders



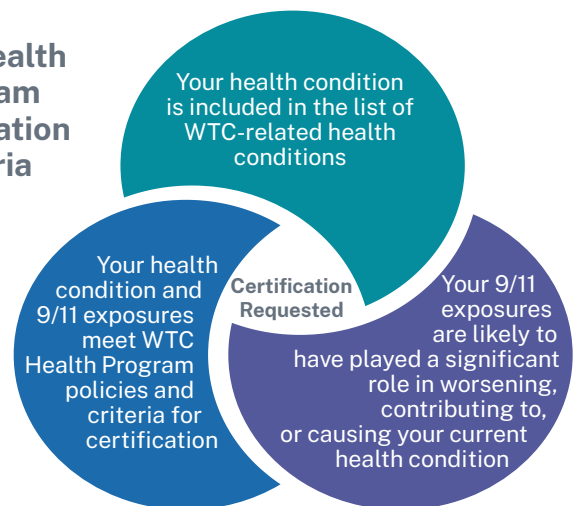
Cancer



Mental Health

The health condition must meet the Program criteria to be considered for certification.

WTC Health Program Certification Criteria



How does a condition get certified?

Step 1: Members receive a medical examination by a WTC Health Program Participating Provider. These examinations, often called Initial Health Evaluation or Annual Monitoring Exams, are covered for eligible members.

Step 2: If the participating provider finds a potential WTC-related health condition during your health evaluation, they may submit a certification request to the Program if all Program criteria are met.

Step 3: The Program reviews the request and makes a certification decision. Members are then notified about the certification decision.

