



Certified Conditions

Do you have health symptoms that could be related to your 9/11 exposure?

Members enrolled as either a Survivor or a Responder in the World Trade Center (WTC) Health Program may receive no-cost medical monitoring and treatment for certified WTC-related health conditions.

What is a certified condition?

A certified WTC-related health condition is a diagnosed condition that is approved for coverage by the WTC Health Program. The Program certifies WTC-related health conditions that are in 5 main categories:



The health condition must meet the Program criteria to be considered for certification.

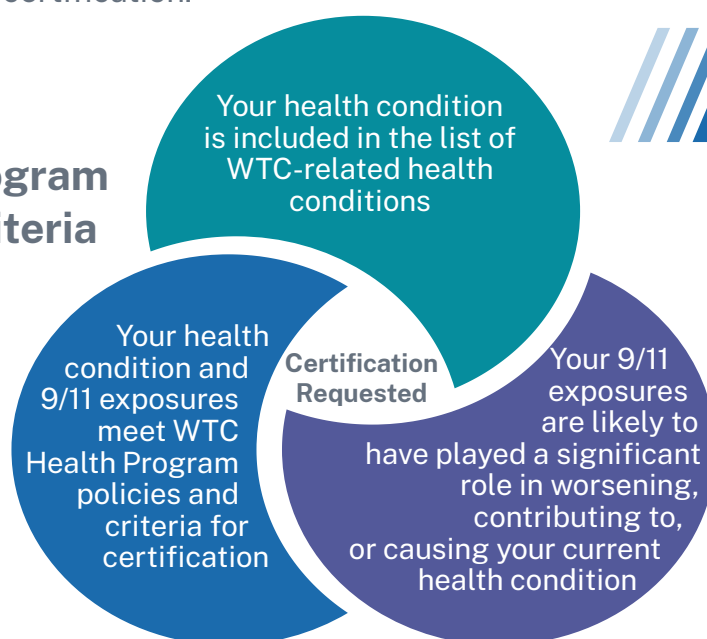
How does a condition get certified?

First, members receive a medical examination by a WTC Health Program Participating Provider. These examinations, often called Initial Health Evaluation or Annual Monitoring Exams, are covered for eligible members.

Next, if the participating provider finds a potential WTC-related health condition during your health evaluation, they may submit a **certification request** to the Program if all Program criteria are met (see below).

Finally, the Program reviews the request and makes a certification decision. Members are then notified about the certification decision.

WTC Health Program Certification Criteria



Find a detailed flow of the certification process on the back of this flyer.

Learn more about conditions the Program covers at www.cdc.gov/wtc/conditions.html





9.11 World Trade Center Health Program

Path to Certified Conditions

