

CDC Locations and Descriptions and Instructions for Mapping Patient Care Locations

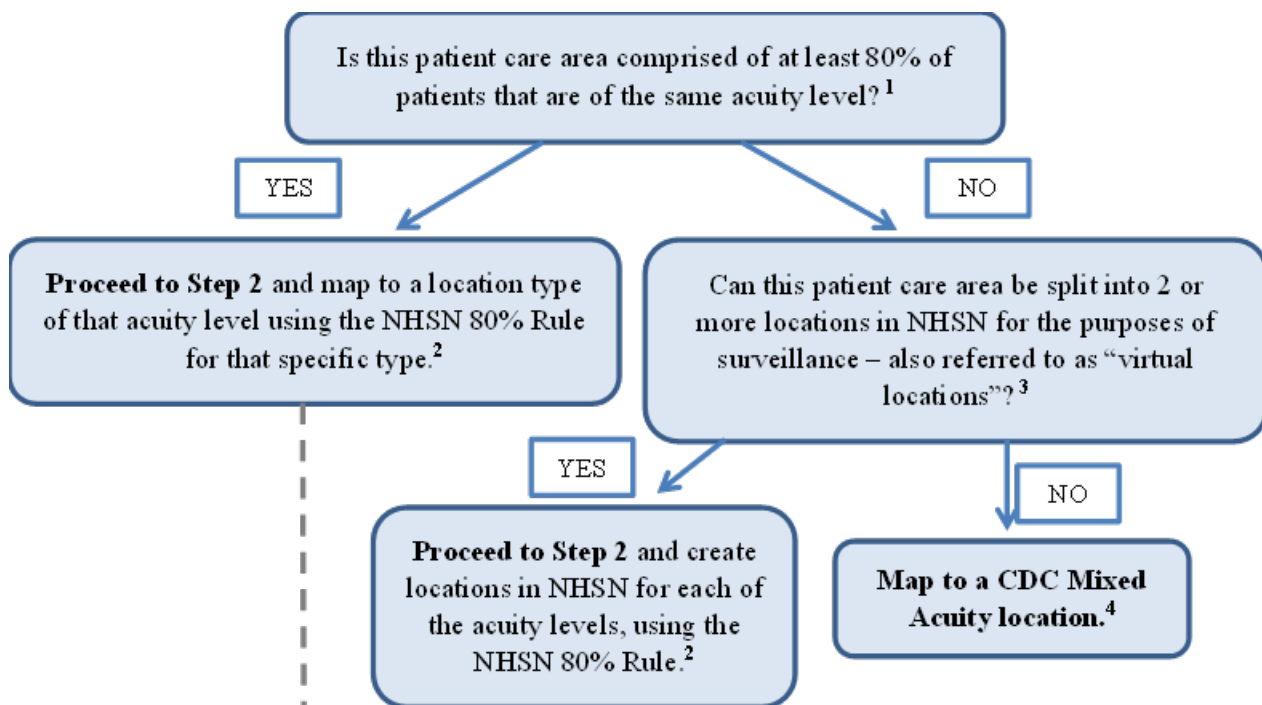
Table of Contents

Instructions for Mapping Patient Care Locations in NHSN	2
Appendix: Creation and Management of Locations in NHSN	7
Master CDC Locations and Descriptions	9
Inpatient Locations	9
Acute Care Facilities General	9
Adult Critical Care Units.....	9
Pediatric Critical Care Units.....	11
Neonatal Units.....	12
Specialty Care Areas (SCA).....	16
Adult Wards.....	16
Pediatric Wards.....	21
Step Down Units.....	23
Mixed Acuity Units.....	24
Operating Rooms.....	26
Chronic Care Units (Previously named Long Term Care).....	27
Long Term Care Facilities	28
Long Term Acute Care Facilities	29
Inpatient Rehabilitation Facilities	30
Oncology Facilities	31
Inpatient Psychiatric Facilities.....	34
Outpatient Locations	35
Outpatient Ambulatory Surgery Centers	35
Acute Care Facilities General	37
Acute Settings.....	37
Clinic (non-acute) Settings.....	39
Miscellaneous Outpatient Settings.....	48
Outpatient Dialysis Facilities	48
Miscellaneous Areas	48
Facility-Wide Locations	49
Community Locations	49
Non-Patient Care Locations	51

Instructions for Mapping Patient Care Locations in NHSN

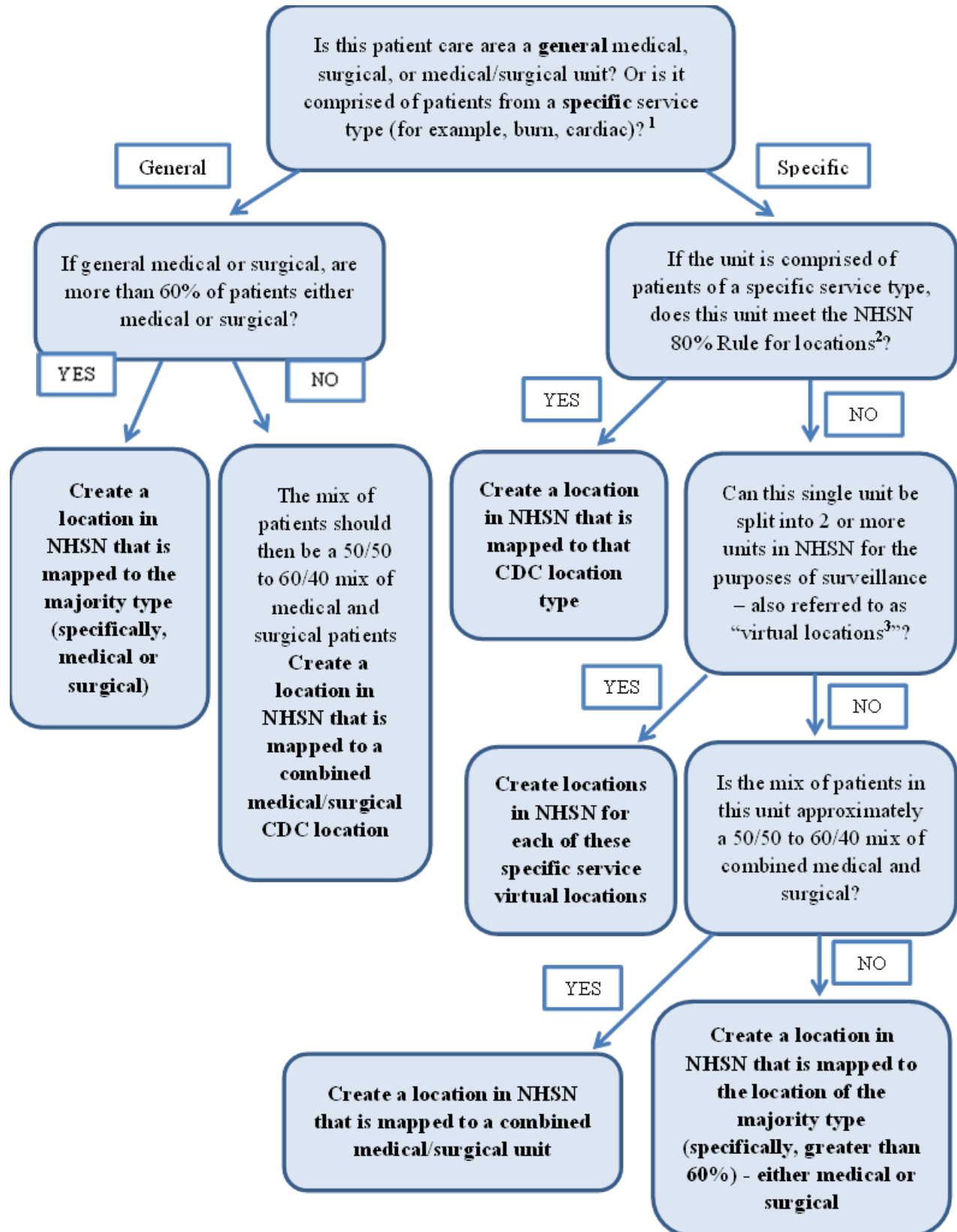
NHSN recommends facilities map each patient care area in their facility to a CDC location code defined by NHSN in order to report surveillance data collected from these areas. This document functions as a decision-making tool when determining the appropriate CDC location for NHSN surveillance, as defined in the NHSN Manual. This process should be followed when adding any new unit to NHSN for surveillance and should be repeated for any unit when there is a significant change in patient mix (for example, merging of units, taking on a new service).

Step 1: Define the acuity level for the location



- List of Acuity Levels:**
- | | |
|-------------------------------------|------------------------------|
| Adult Critical Care Units | Mixed Acuity Units |
| Pediatric Critical Care Units | Operating Rooms |
| Neonatal Critical Care Units | Chronic Care |
| Specialty Care Areas (SCA)/Oncology | Long Term Acute Care |
| Adult Wards | Rehabilitation |
| Pediatric Wards | Outpatient (ACUTE) Locations |
| Neonatal Wards | Clinic (Nonacute) Settings |
| Step Down Units | |

Step 2: Define the type of service for the location



Please see the [CDC Location descriptions](#) for definitions of each CDC Location used for NHSN surveillance in this chapter.

1. Patient mix: When determining the appropriate CDC Location mapping for a unit, facilities should review the patient mix in that unit for the last full calendar year using acuity billing data (if available). The acuity billing data is considered the most accurate depiction of the patient’s illness and reason for being admitted to a particular unit. Admission/transfer diagnosis or admitting service can also be used to determine location mapping if billing data is not available.

- Facilities should use 1 years’ worth of data to make this determination.
- If a full year of data is not available, a shorter period of at least 3 months is acceptable, but every effort should be made to collect and analyze greater periods of time in the future.
- If billing acuity data is not available, facilities should review patient mix based on the data they have available for that unit.

2. NHSN 80% Rule: Each patient care area in a facility is “mapped” to one CDC Location. The specific CDC Location code is determined by the type of patients cared for in that specific area according to the 80% Rule. If 80% of patients are of a certain type (for example, pediatric patients with orthopedic problems), the area is designated as that specific type of location (in this case, an Inpatient Pediatric Orthopedic Ward).

3. Virtual locations: Virtual locations are created in NHSN when a facility is unable to meet the 80% rule for location designation in a single physical unit but would like to report their NHSN surveillance data for each of the major, specific patient types in that unit. The use of virtual locations is recommended for those physical units that are geographically split by patient service, those in which beds are designated by service, or units where denominator data can be collected by patient type/service. Example: a facility has an ICU – called 5 West – comprised of approximately 50% neurology patients and 50% neurosurgery patients. The neurology patients are housed in beds 1 thru 10 and the neurosurgery patients are housed in beds 11 thru 20. Rather than map as a medical/surgical critical care unit, the facility decides to create 2 new locations in NHSN:

5WEST_N: Neurologic Critical Care (10 beds)

5WEST_NS: Neurosurgical Critical Care (10 beds)

This facility will collect and enter data for 5WEST_N and 5WEST_NS separately. The facility will also be able to obtain rates and standardized infection ratios (SIRs) for each location separately. Note that the data collected and reported for each virtual location will be limited to the designated 10 beds assigned (specifically, overflow from 5WEST_N into 5WEST_NS will be counted with **5WEST_NS**). For those facilities that use an electronic source for collecting data, discuss compatibility of virtual locations in NHSN with your facility’s EHR contact prior to reporting data for these locations.

4. Mixed Acuity Unit: This CDC location code is available for adult patient care areas only and is intended for those units comprised of patients with varying levels of acuity. NOTE: Mapping a location in NHSN to the CDC “Mixed Acuity” designation may have implications on data that your facility reports for CMS Programs and/or your state’s reporting mandate(s). Although a Mixed Acuity location may have ICU beds and ICU patients, it is not considered an ICU location type for the purposes of CMS reporting and therefore is not included in any ICU-specific reporting requirements. Mixed Acuity units are also excluded from ward-specific reporting requirements. For information about how this location designation may

impact your facility's compliance with your state mandate (if applicable), please contact your state HAI coordinator: www.cdc.gov/HAI/state-based/index.html.

5. Overflow Unit: This location is intended for areas previously not used for inpatient care which has been repurposed to care for critically or non-critically ill or injured patients.

Examples

Example 1: An ICU that is 85% Burn patients, 15% Trauma

CDC Location: Burn Critical Care (IN:ACUTE:CC:B)

Why? Meets 80% rule for critical care acuity level and 80% rule for specific service (burn)

Example 2: An ICU that is 55% medical and 45% surgical

CDC Location: Medical/Surgical Critical Care (IN:ACUTE:CC:MS)

Why? Meets 80% rule for critical care acuity level and does not meet the 60% rule for designation as either medical or surgical service level alone, therefore, use combined medical/surgical designation

Example 3: A unit that is comprised of 60% medical inpatients and 40% general observation patients

CDC Location: Medical Ward (IN:ACUTE:WARD:M)

Why? This is a special scenario due to the mix of inpatients and outpatients in this unit. A location where at least 51% of the patients have been formally admitted to the facility should be mapped as in inpatient unit, rather than an outpatient observation unit. The 60% rule for general service and the 80% rule for specific service still apply when deciding on the specific type of inpatient location to use; this location met the 60% rule for medical service. All patients housed in this unit should be included in the surveillance efforts for this location regardless of patient status.

Example 4: An ICU that is 40% Neurosurgical, 40% Surgical, and 20% Medical

Option 1 - Single CDC Location: Surgical Critical Care

Why? Meets 80% rule for critical care acuity level and does not meet the 80% rule for a specific service level alone, but when surgical patients are combined, that total does equal 80%.

Option 2 - Multiple CDC Virtual Locations: Neurosurgical Critical Care and Surgical Critical Care, with the medical patients reported with the Surgical Critical Care location since the general surgical designation is the least specific of the two

Why? By splitting this unit into 2 virtual locations, each meets the 80% rule for critical care acuity level, and one meets the 80% rule for designation as Neurosurgical Critical Care, while the other meets the 60% rule as general surgical service (when combining surgical and medical patients). This option requires denominator data be separated by virtual location.

Example 5: A unit that is comprised of 60% Medical ICU and 40% Step Down patients

Option 1 - Multiple CDC Virtual Locations: Medical Critical Care and Step Down Unit

Why? By splitting this unit into 2 virtual locations, each meets the 80% rule for the appropriate acuity level, and each meets the 80% rule for type of service. Preferred mapping if denominator data can be captured separately for each virtual location.

Option 2 - Single CDC Location: Mixed Acuity Unit

Why? This location is not comprised of at least 80% of the patients of the same acuity level and therefore meets the single location definition of a mixed acuity unit. Note that this location is not considered an ICU location type for the purposes of NHSN reporting and therefore, would not be included in any ICU-specific reporting requirements.

Example 6: A pediatric ward that is comprised of 70% neurosurgical patients and 30% orthopedic patients

Option 1 - Single CDC Location: Pediatric Surgical Ward

Why? Meets 80% rule for ward-level acuity and does not meet the 80% rule for a specific service level alone and meets the 60% rule for general surgical service.

Option 2 - Multiple CDC Virtual Locations: Pediatric Neurosurgical Ward and Pediatric Orthopedic Ward

Why? By splitting this unit into 2 virtual locations, each meets the 80% rule for the appropriate acuity level, and each meets the 80% rule for type of service.

Surge and/or overflow units, whether newly opened or repurposed from a previously mapped location, should follow the above guidance and be included in facility mapping. Examples of surge/overflow mapping can be found here: <https://www.cdc.gov/nhsn/pdfs/covid19/location-mapping-508.pdf>.

Appendix: Creation and Management of Locations in NHSN

Create New Locations:

If there are any operational locations in your hospital that are not already mapped in NHSN, you will need to create these locations for the purposes of NHSN surveillance and reporting.

Locations can be mapped by following these steps:

1. Go to Facility > Locations.
2. On the Locations screen, enter a location code ("Your Code") and location label ("Your Label").
3. Select a CDC Location Description from the drop-down menu. NOTE: When selecting a CDC Location Description, your location must meet the 80% Rule in order to be assigned as that CDC Location Description.
4. Make sure the Status is set to "Active" and then enter the number of beds that are set up and staffed in that location.
5. Once all information for this new location is entered, click 'Add'.

Manage Existing Locations:

Facilities should ensure locations with an "Active" status in NHSN are those that are operational units within the facility. The number of beds indicated for each location should also be checked for accuracy and, if necessary, updated to reflect the current number of beds set up and staffed.

Location information can be updated by following these steps:

1. Go to Facility > Locations.
2. On the Locations screen, click 'Find'.
3. Review the information that appears in the Location Table at the bottom of the screen. Review the Status of each location, as well as Bed size.
4. If a location's information needs to be updated, click the location code under the "Your Code" column; the location's information will auto-fill in the fields above the Location Table.
5. Make any modifications to the Status and/or Bed size, then click 'Save'.

Manage Physically Moved Locations

Units within a facility may physically move to another area of the same facility and be given a different name. If the staff are moving with these locations, and the type of patients remains the same (specifically, the only difference is the geographical location and/or Bed size), then it's recommended to change "Your Code" and "Your Label" (and Bed size, if appropriate) on the existing location record. These fields can be updated by following the instructions for "Manage Existing Locations" above. Updating the value of "Your Code" will also update all previously-entered records for the location, allowing for continuous analysis and reporting.

Inaccurate CDC Location Description

Please note that the CDC Location Description cannot be edited after a location is mapped in NHSN. If you believe that the CDC Location Description assigned to your existing location is incorrect, there are additional steps you will need to follow, depending on the scenario:

Scenario 1: The patient population in this unit has changed such that the current CDC Location Description, using the 80% rule, is inaccurate.

Solution: Due to patient population change, a new location is created in NHSN and mapped to a CDC Location Description that most accurately reflects the type of patients receiving care in that location, using the 80% rule. The existing location is placed into “Inactive” status. When creating a new location, a different “Your Code” and “Your Label” value must be used. Note: data reported from inactive locations can continue to be analyzed within NHSN for the months during which they appear in the Monthly Reporting Plans. Additionally, note inactive locations will not be linked to new, active locations.

The Master CDC Locations and Descriptions table (below starting pg. 15-9) will transition from the CDC maintained table to an online table based on standard location codes. NHSN encourages users to become familiar with the online table prior to December 2024 when the Locations transition to the online process is fully implemented. This transition does NOT mean a facility must ‘remap’ existing locations; the table will continue to provide reference for ‘new’ unit mappings or ‘remapping’ of existing units. The link below will point to the NHSN Terminology Browser, then select Locations to open the document with location mapping options.

<https://www.cdc.gov/nhsn/cdaportal/terminology/index.html>

Master CDC Locations and Descriptions

CDC Location Label	NHSN Healthcare Service Location Code	CDC Location Code	Location Description
INPATIENT LOCATIONS			
ACUTE CARE FACILITIES GENERAL			
Adult Critical Care Units			
Burn Critical Care	1026-4	IN:ACUTE:CC:B	Critical care area for the care of patients with significant/major burns.
Medical Cardiac Critical Care	1028-0	IN:ACUTE:CC:C	Critical care area for the care of patients with serious heart problems that DO NOT require heart surgery.
Medical Critical Care	1027-2	IN:ACUTE:CC:M	Critical care area for the care of patients who are being treated for nonsurgical conditions.
Medical-Surgical Critical Care	1029-8	IN:ACUTE:CC:MS	Critical care area for the care of patients with medical and/or surgical conditions.
Neurologic Critical Care	1035-5	IN:ACUTE:CC:N	Critical care area for the care of patients with life-threatening neurologic diseases.
Neurosurgical Critical Care	1031-4	IN:ACUTE:CC:NS	Critical care area for the surgical management of patients with severe neurologic diseases or those at risk for neurologic injury as a result of surgery.



CDC Location Label	NHSN Healthcare Service Location Code	CDC Location Code	Location Description
Oncology Medical Critical Care	1223-7	IN:ACUTE:CC:ONC_M	Critical care area for the care of oncology patients who are being treated for nonsurgical conditions related to their malignancy.
Oncology Surgical Critical Care	1224-5	IN:ACUTE:CC:ONC_S	Critical care area for the evaluation and management of oncology patients with serious illness before and/or after cancer-related surgery.
Oncology Medical-Surgical Critical Care	1225-2	IN:ACUTE:CC:ONC_MS	Critical care area for the care of oncology patients with medical and/or surgical conditions related to their malignancy.
Onsite Overflow Critical Care	1272-4	IN:ACUTE:CC:OF_ONSITE	Area previously used for non-patient care which has been repurposed to care for critically ill or injured patients.
Prenatal Critical Care	1034-8	IN:ACUTE:CC:PNATL	Critical care area for the care of pregnant patients with complex medical or obstetric problems requiring a high level of care to prevent the loss of the fetus and to protect the life of the mother.
Respiratory Critical Care	1033-0	IN:ACUTE:CC:R	Critical care area for the evaluation and treatment of patients with severe respiratory conditions.
Surgical Cardiothoracic Critical Care	1032-2	IN:ACUTE:CC:CT	Critical care area for the care of patients following cardiac and/or thoracic surgery.

CDC Location Label	NHSN Healthcare Service Location Code	CDC Location Code	Location Description
Surgical Critical Care	1030-6	IN:ACUTE:CC:S	Critical care area for the evaluation and management of patients with serious illness before and/or after surgery.
Trauma Critical Care	1025-6	IN:ACUTE:CC:T	Critical care area for the care of patients who require a high level of monitoring and/or intervention following trauma or during critical illness related to trauma.
Pediatric Critical Care Units			
ONC Pediatric Critical Care	1233-6	IN:ACUTE:CC:ONC_PED	Critical care area for the care of oncology patients ≤18 years old who are being treated for surgical or nonsurgical conditions related to their malignancy.
Pediatric Burn Critical Care	1042-1	IN:ACUTE:CC:B_PED	Critical care area for the care of patients ≤18 years old with significant/major burns.
Pediatric Surgical Cardiothoracic Critical Care	1043-9	IN:ACUTE:CC:CT_PED	Critical care area for the care of patients ≤18 years old following cardiac and thoracic surgery.
Pediatric Medical Critical Care	1044-7	IN:ACUTE:CC:M_PED	Critical care area for the care of patients ≤18 years old who are being treated for nonsurgical conditions.
Pediatric Medical-Surgical Critical Care	1045-4	IN:ACUTE:CC:MS_PED	Critical care area for the care of patients ≤18 years old with medical and/or surgical conditions.

CDC Location Label	NHSN Healthcare Service Location Code	CDC Location Code	Location Description
Pediatric Neurosurgical Critical Care	1046-2	IN:ACUTE:CC:NS_PED	Critical care area for the surgical management of patients ≤18 years old with severe neurologic diseases or those at risk for neurologic injury as a result of surgery.
Pediatric Respiratory Critical Care	1047-0	IN:ACUTE:CC:R_PED	Critical care area for the evaluation and treatment of patients ≤18 years old with severe respiratory conditions.
Pediatric Surgical Critical Care	1048-8	IN:ACUTE:CC:S_PED	Critical care area for the evaluation and management of patients ≤18 years old with serious illness before and/or after surgery.
Pediatric Trauma Critical Care	1049-6	IN:ACUTE:CC:T_PED	Critical care area for the care of patients ≤18 years old who require a high level of monitoring and/or intervention following trauma or during critical illness related to trauma.
Neonatal Units			
Well Newborn-- Nursery (Level I)	1038-9	IN:ACUTE:WARD:NURS	Hospital area for evaluation and postnatal care of healthy newborns. May include neonatal resuscitation and stabilization of ill newborns until transfer to a facility at which specialty neonatal care is provided.

CDC Location Label	NHSN Healthcare Service Location Code	CDC Location Code	Location Description
Special Care Nursery (Level II)	1041-3	IN:ACUTE:STEP:NURS	<p>The capabilities of Level II, listed below, are from the American Academy of Pediatrics definitions of levels of neonatal care.¹</p> <p><u>Level II special care nursery</u></p> <p>Level I capabilities plus:</p> <ul style="list-style-type: none"> • Provide care for infants born ≥ 32 wks. gestation and weighing ≥ 1500 g who have physiologic immaturity or who are moderately ill with problems that are expected to resolve rapidly and are not anticipated to need subspecialty services on an urgent basis • Provide care for infants convalescing after intensive care • Provide mechanical ventilation for brief duration (<24 h) or continuous positive airway pressure or both • Stabilize infants born before 32 wks. gestation and weighing less than 1500 g until transfer to a neonatal intensive care facility

CDC Location Label	NHSN Healthcare Service Location Code	CDC Location Code	Location Description
Neonatal Critical Care (Level II/III)	1039-7	IN:ACUTE:CC_STEP: NURS	<p>Combined nursery housing both Level II and III newborns and infants, as per the NHSN level definitions above and below. This is analogous to a mixed acuity unit specifically for Neonatal Critical Care patients.</p>
Neonatal Critical Care (Level III)	1040-5	IN:ACUTE:CC:NURS	<p>A hospital neonatal intensive care unit (NICU) organized with personnel and equipment to provide continuous life support and comprehensive care for extremely high-risk newborn infants and those with complex and critical illness.</p> <p>The capabilities of Level III, listed below, are from the American Academy of Pediatrics definitions of levels of neonatal care.¹</p> <p><u>Level III NICU</u></p> <p>Level II capabilities plus:</p> <ul style="list-style-type: none"> • Provide sustained life support • Provide comprehensive care for infants born < 32 wks. gestation and weighing <1500 g and infants born at all gestational ages and birth weights with critical illness • Provide prompt and readily available access to a full range of pediatric medical subspecialists, pediatric surgical specialists, pediatric

CDC Location Label	NHSN Healthcare Service Location Code	CDC Location Code	Location Description
			<p>anesthesiologists, and pediatric ophthalmologists</p> <ul style="list-style-type: none"> • Provide a full range of respiratory support that may include conventional and/or high-frequency ventilation and inhaled nitric oxide • Perform advanced imaging, with interpretation on an urgent basis, including computed tomography, MRI, and echocardiography
Neonatal Critical Care (Level IV)	1269-0	IN:ACUTE:CC:NURS_IV	<p>Critical care area for the care of newborns and infants with serious illness requiring Level IV care; area is supervised by a neonatologist</p> <p>Level IV</p> <p>Level III capabilities plus:</p> <ul style="list-style-type: none"> • Located within an institution with the capability to provide surgical repair of complex congenital or acquired conditions • Maintain a full range of pediatric medical subspecialists, pediatric surgical subspecialists, and pediatric subspecialists at the site • Facilitate transport and provide outreach education

CDC Location Label	NHSN Healthcare Service Location Code	CDC Location Code	Location Description
Specialty Care Areas (SCA)			
Dialysis Specialty Care Area	1198-1	IN:ACUTE:SCA:DIAL	Specialty care area for the care of patients who require acute dialysis as a temporary measure.
Pediatric Dialysis Specialty Care Area	1091-8	IN:ACUTE:SCA:DIAL_PED	Specialty care area for the care of patients ≤18 years old who require acute dialysis as a temporary measure.
Pediatric Solid Organ Transplant Specialty Care Area	1093-4	IN:ACUTE:SCA:SOTP_PED	Specialty care area for the postoperative care of patients ≤18 years old who have had a solid organ transplant (for example, heart/lung, kidney, liver, pancreas).
Solid Organ Transplant Specialty Care Area	1092-6	IN:ACUTE:SCA:SOTP	Specialty care area for the postoperative care of patients >18 years old who have had a solid organ transplant (for example, heart/lung, kidney, liver, pancreas).
Adult Wards			
Antenatal Care Ward	1205-4	IN:ACUTE:WARD: ANTENAT	Hospital area for observation, evaluation, treatment or surgery of high-risk pregnancy patients.
Behavioral Health/Psych Ward	1051-2	IN:ACUTE:WARD:BHV	Area for the evaluation and treatment of patients with acute psychiatric or behavioral disorders.
Burn Ward	1052-0	IN:ACUTE:WARD:B	Area for the evaluation and treatment of patients who have burns.



CDC Location Label	NHSN Healthcare Service Location Code	CDC Location Code	Location Description
Ear, Nose, Throat Ward	1053-8	IN:ACUTE:WARD:ENT	Area for the evaluation, treatment, or surgery of patients with ear, nose, or throat disorders.
Gastrointestinal Ward	1054-6	IN:ACUTE:WARD:GI	Area for the evaluation, treatment, or surgery of patients with disorders of the gastrointestinal tract.
Genitourinary Ward	1055-3	IN:ACUTE:WARD:GU	Area for the evaluation, treatment, or surgery of patients with disorders of the genitourinary system.
Gerontology Ward	1056-1	IN:ACUTE:WARD:GNT	Area for the evaluation, treatment, or surgery of patients with age-related diseases.
Gynecology Ward	1057-9	IN:ACUTE:WARD:GYN	Area for the evaluation, treatment, or surgery of female patients with reproductive tract disorders.
Jail Unit	1171-8	IN:ACUTE:WARD:JAL	Overnight stay patient care area of a hospital or correctional facility used only for those who are in custody of law enforcement during their treatment.
Labor and Delivery Ward	1058-7	IN:ACUTE:WARD:LD	Area where women labor and give birth.
Labor, Delivery, Recovery, Postpartum Suite	1059-5	IN:ACUTE:WARD:LD_PP	Suite used for labor, delivery, recovery and postpartum care -- all within the same suite.
Medical Ward	1060-3	IN:ACUTE:WARD:M	Area for the evaluation and treatment of patients with medical conditions or disorders.

CDC Location Label	NHSN Healthcare Service Location Code	CDC Location Code	Location Description
Medical-Surgical Ward	1061-1	IN:ACUTE:WARD:MS	Area for the evaluation of patients with medical and/or surgical conditions.
Neurology Ward	1062-9	IN:ACUTE:WARD:N	Area for the evaluation and treatment of patients with neurologic disorders.
Neurosurgical Ward	1063-7	IN:ACUTE:WARD:NS	Area for the care of patients whose primary reason for admission is to have neurosurgery or to be cared for by a neurosurgeon after head or spinal trauma.
Oncology Leukemia Ward	1226-0	IN:ACUTE:WARD:ONC_LEUK	Area for the evaluation and treatment of patients with leukemia.
Oncology Lymphoma Ward	1228-6	IN:ACUTE:WARD:ONC_LYMPH	Area for the evaluation and treatment of patients with lymphoma.
Oncology Leukemia/Lymphoma Ward	1229-4	IN:ACUTE:WARD:ONC_LL	Area for the evaluation and treatment of patients with leukemia and/or lymphoma.
Oncology Solid Tumor Ward	1230-2	IN:ACUTE:WARD:ONC_ST	Area for the evaluation and treatment of oncology patients with solid tumors.
Oncology Hematopoietic Stem Cell Transplant Ward	1231-0	IN:ACUTE:WARD:ONC_HSCT	Area for the care of patients who undergo stem cell transplant for the treatment of cancers, immune effector cell therapy, and/or blood or immune system disorders.

CDC Location Label	NHSN Healthcare Service Location Code	CDC Location Code	Location Description
Oncology General Hematology-Oncology Ward	1232-8	IN:ACUTE:WARD: ONC_HONC	Area for the evaluation and treatment of patients with cancer and/or blood disorders.
Ophthalmology Ward	1064-5	IN:ACUTE:WARD:OPH	Area for the care of patients whose primary reason for admission is to have eye surgery or to be cared for by an ophthalmologist after eye trauma.
Orthopedic Ward	1065-2	IN:ACUTE:WARD:ORT	Area for the evaluation, treatment, or surgery on bones, joints, and associated structures by an orthopedist.
Orthopedic Trauma Ward	1066-0	IN:ACUTE:WARD:T_ORT	Area for the evaluation and treatment of patients with orthopedic injuries or disorders.
Onsite Overflow Ward	1271-6	IN:ACUTE:WARD:OF_ONSITE	Area previously used for non-patient care which has been repurposed to care for non-critically ill or injured patients
Plastic Surgery Ward	1067-8	IN:ACUTE:WARD:PLS	Area for the care of patients who have reconstructive surgery performed by a plastic surgeon.
Postpartum Ward	1068-6	IN:ACUTE:WARD:PP	Area for the care of patients recovering from childbirth.
Pulmonary Ward	1069-4	IN:ACUTE:WARD:PULM	Area for the evaluation and treatment of patients with respiratory system conditions or disorders.

CDC Location Label	NHSN Healthcare Service Location Code	CDC Location Code	Location Description
Rehabilitation Ward (within Hospital)	1070-2	IN:ACUTE:WARD:REHAB	Area for the evaluation and restoration of function to patients who have lost function due to acute or chronic pain, musculoskeletal problems, stroke, or catastrophic events resulting in complete or partial paralysis.
School Infirmary	1172-6	IN:ACUTE:WARD:IFM	Overnight stay patient care area of a school infirmary or health center (for example, private residential school or college campus).
Stroke (Acute) Ward	1071-0	IN:ACUTE:WARD:STRK	Area for the evaluation, stabilization, and treatment of patients who have experienced an acute stroke.
Surgical Ward	1072-8	IN:ACUTE:WARD:S	Area for the evaluation and treatment of patients who have undergone a surgical procedure.
Telemetry Ward	1208-8	IN:ACUTE:WARD:TEL	Hospital area dedicated to providing evaluation and treatment of patients requiring continuous cardiac monitoring
Vascular Surgery Ward	1073-6	IN:ACUTE:WARD:VS	Area for the evaluation and treatment of patients who have undergone vascular surgery.
Chemical Dependency Ward	1270-8	IN:ACUTE:WARD:CD	Area for the evaluation and treatment of patients with chemical dependency.

CDC Location Label	NHSN Healthcare Service Location Code	CDC Location Code	Location Description
Pediatric Wards			
Adolescent Behavioral Health Ward	1075-1	IN:ACUTE:WARD: BHV_ADOL	Area for the evaluation and treatment of patients 13-18 years old with acute psychiatric or behavioral disorders.
Oncology Pediatric Hematopoietic Stem Cell Transplant Ward	1234-4	IN:ACUTE:WARD: ONC_HSCT_PED	Area for the care of patients ≤18 years old who undergo stem cell transplant for the treatment of cancers and/or blood or immune system disorders.
Oncology Pediatric General Hematology/Oncology Ward	1235-1	IN:ACUTE:WARD: ONC_HONC_PED	Area for the evaluation and treatment of patients ≤18 years old with cancer and/or blood disorders.
Pediatric Behavioral Health Ward	1077-7	IN:ACUTE:WARD:BHV_PED	Area for the evaluation and treatment of patients ≤18 years old with acute psychiatric or behavioral disorders.
Pediatric Burn Ward	1078-5	IN:ACUTE:WARD:B_PED	Area for the evaluation and treatment of patients ≤18 years old who have tissue injury caused by burns.
Pediatric Ear, Nose, Throat Ward	1079-3	IN:ACUTE:WARD: ENT_PED	Area for the evaluation and treatment of patients ≤18 years old with disorders of the ear, nose, and/or throat.
Pediatric Genitourinary Ward	1080-1	IN:ACUTE:WARD: GU_PED	Area for the evaluation and treatment of patients ≤18 years old with disorders of the genitourinary system.
Pediatric Medical Ward	1076-9	IN:ACUTE:WARD:M_PED	Area for the evaluation and treatment of patients ≤18 years old with medical conditions or disorders.

CDC Location Label	NHSN Healthcare Service Location Code	CDC Location Code	Location Description
Pediatric Medical-Surgical Ward	1081-9	IN:ACUTE:WARD:MS_PED	Area for the evaluation and treatment of patients ≤18 years old with medical and/or surgical conditions.
Pediatric Neurology Ward	1082-7	IN:ACUTE:WARD:N_PED	Area for the evaluation and treatment of patients ≤18 years old with neurologic disorders.
Pediatric Neurosurgical Ward	1083-5	IN:ACUTE:WARD:NS_PED	Area for care of patients ≤18 years old whose primary reason for admission is to have neurosurgery or to be cared for by a neurosurgeon after head or spinal trauma.
Pediatric Orthopedic Ward	1084-3	IN:ACUTE:WARD:ORT_PED	Area for the evaluation and treatment of patients ≤18 years old with orthopedic injuries or disorders.
Pediatric Rehabilitation Ward (within Hospital)	1085-0	IN:ACUTE:WARD:REHAB_PED	Area for the evaluation and restoration of function to patients ≤18 years old who have lost function due to acute or chronic pain, musculoskeletal problems, stroke, or catastrophic events resulting in complete or partial paralysis.
Pediatric Surgical Ward	1086-8	IN:ACUTE:WARD:S_PED	Area for the evaluation and treatment of patients ≤18 years old who have undergone a surgical procedure.

CDC Location Label	NHSN Healthcare Service Location Code	CDC Location Code	Location Description
Step Down Units			
Adult Step Down Unit	1099-1	IN:ACUTE:STEP	Area for adult patients who are hemodynamically stable and can benefit from close supervision and monitoring, such as frequent pulmonary toilet, vital signs, and/or neurologic and neurovascular checks.
Oncology Step Down Unit	1227-8	IN:ACUTE:STEP:ONC	Area for oncology patients who are hemodynamically stable and can benefit from close supervision and monitoring, such as frequent pulmonary toilet, vital signs, and/or neurologic and neurovascular checks.
Pediatric Step-Down Unit	1100-7	IN:ACUTE:STEP:PED	Area for patients ≤18 years old who are hemodynamically stable and can benefit from close supervision and monitoring, such as frequent pulmonary toilet, vital signs, and/or neurologic and neurovascular checks.

CDC Location Label	NHSN Healthcare Service Location Code	CDC Location Code	Location Description
Mixed Acuity Units			
Adult Mixed Acuity Unit	1210-4	IN:ACUTE:MIXED: ALL_ADULT	Hospital area for the evaluation and treatment of adult patients whose conditions are of varying levels of acuity (for example, critical care, ward-level care, step-down type care, etc.). Such a care area may be comprised of patients followed by different hospital services (for example, coronary, medical, surgical, etc.). This care area may or may not include "acuity adaptable" or "universal" beds (specifically, this model of patient care allows a patient to stay in same bed during all phases of his care, from critical care through lower levels of care).
Pediatric Mixed Acuity Unit	1211-2	IN:ACUTE:MIXED: ALL_PEDS	Hospital area for the evaluation and treatment of pediatric patients whose conditions are varying levels of acuity (for example, critical care, ward-level care, step down type care, etc.). Such a care area may be comprised of patients followed by different hospital services (for example, coronary, medical, surgical, etc.). This care area may or may not include "acuity adaptable" or "universal" beds (specifically, this model of patient care allows a patient to stay in the same bed during all phases of his care, from critical care through lower levels of care).



CDC Location Label	NHSN Healthcare Service Location Code	CDC Location Code	Location Description
Mixed Age Mixed Acuity Unit	1212-0	IN: ACUTE:MIXED:ALL	Hospital area for the evaluation and treatment of a mixture of adult and pediatric patients whose conditions are of varying levels of acuity (for example, critical care, ward-level care, step-down type care, etc.). Such a care area may be comprised of patients followed by different hospital services (for example, coronary, medical, surgical, etc.). This care area may or may not include "acuity adaptable" or "universal" beds (specifically, this model of patient care allows a patient to stay in same bed during all phases of his care, from critical care through lower levels of care).
Oncology Mixed Acuity Unit (all ages)	1236-9	IN: ACUTE:MIXED:ONC	Area for the evaluation and treatment of a mixture of adult and pediatric oncology patients whose conditions are of varying levels of acuity (for example, critical care, ward-level care, step-down type care, etc.). This care area may or may not include "acuity adaptable" or "universal" beds (specifically, this model of patient care allows a patient to stay in the same bed during all phases of care, from critical care through lower levels of care).

CDC Location Label	NHSN Healthcare Service Location Code	CDC Location Code	Location Description
Operating Rooms			
Cardiac Catheterization Room/Suite	1005-8	IN:ACUTE:OR:CATH	A room or rooms in a hospital equipped for the performance of heart catheterizations for diagnostic or therapeutic purposes. Operating Room requirements for air changes, temperature, humidity and surfaces must be met.
Cesarean Section Room/Suite	1095-9	IN:ACUTE:OR:LD	A room or suite in a hospital equipped for the performance of obstetric and gynecologic surgeries and for the care of the neonate immediately after birth. Operating Room requirements for air changes, temperature, humidity and surfaces must be met.
Interventional Radiology	1203-9	IN:ACUTE:OR:RAD	A room where diagnostic or therapeutic radiology procedures are done on outpatients or inpatients. Operating room requirements for air changes, temperature, humidity, and surfaces must be met.
Operating Room/Suite	1096-7	IN:ACUTE:OR	A room or suite in a hospital equipped for the performance of surgical operations. Requirements for air changes, temperature, humidity, and surfaces must be met.

CDC Location Label	NHSN Healthcare Service Location Code	CDC Location Code	Location Description
Post Anesthesia Care Unit/Recovery Room	1097-5	IN:ACUTE:OR_STEP	Area designated for monitoring patients for immediate effects of anesthesia before either going home or on to an in-patient care area.
<p>Chronic Care Units (Previously named Long Term Care)</p> <p><i>NOTE: These location descriptions should only be used to define chronic care units that share a CCN with the affiliated acute care hospital. NHSN does not specifically define “extended periods of time”, which is used to describe many of the chronic care units. NHSN leaves this to the facility’s discretion. Chronic care units are traditionally non-medical wards where dedicated care is given towards those patients with pre-existing or long-term illness, as opposed to acute care which is concerned with short term or severe illness. Skilled nursing facility (SNF) units located within a hospital that have a CCN that is different from the acute care hospital should be enrolled as a separate NHSN facility within the NHSN Long Term Care Facility Component and use the long-term care locations defined on pages 28-29.</i></p>			
Inpatient Hospice	1165-0	IN:NONACUTE:LTC:HSP	Area where palliative care is provided to the dying patient.
Chronic Alzheimer's Unit	1103-1	IN:NONACUTE:LTC:ALZ	Area where care is provided to persons diagnosed with Alzheimer's syndrome for extended periods of time.
Chronic Behavioral Health/Psych Unit	1104-9	IN:NONACUTE:LTC:BHV	Area where care is provided to patients with psychiatric or behavioral-disorder diagnoses for extended periods of time.



CDC Location Label	NHSN Healthcare Service Location Code	CDC Location Code	Location Description
Chronic Rehabilitation Unit	1105-6	IN:NONACUTE:LTC: REHAB	Area where evaluation and restoration of function is provided to patients who have lost function due to acute or chronic pain, musculoskeletal problems, stroke, or catastrophic events resulting in complete or partial paralysis.
Chronic Care Unit	1102-3	IN:NONACUTE:LTC	Area where care provided for patients with chronic disease or disabilities for extended periods of time.
Ventilator Dependent Unit	1164-3	IN:NONACUTE:LTC:R	Area where care is provided to patients whose respirations depend on the use of a ventilator for extended periods of time.
LONG TERM CARE FACILITIES			
Long Term Care Facility Inpatient Hospice Unit	1254-2	IN:NONACUTE:LTCF:HSP	A unit or designated area which provides palliative and supportive care services to individuals diagnosed with life limiting (terminal) conditions.
Long Term Care Facility Dementia Unit	1255-9	IN:NONACUTE:LTCF:DEM	A unit or designated area which provides specialized care for individuals diagnosed with dementia or related conditions, including Alzheimer's disease.
Long Term Care Facility Psychiatric Unit	1256-7	IN:NONACUTE:LTCF:PSY	Unit or designated area which provides specialized care for individuals diagnosed with psychiatric or behavioral disorders.



CDC Location Label	NHSN Healthcare Service Location Code	CDC Location Code	Location Description
Long Term Care Facility Skilled Nursing-Short Term Rehabilitation	1257-5	IN:NONACUTE:LTCF: REHAB	A unit or designated area which primarily provides short term (<90 days), medical, skilled nursing or rehabilitation services to individuals requiring restorative care following recent hospitalization.
Long Term Care Facility General Nursing Unit	1258-3	IN:NONACUTE:LTCF:GEN	A unit or designated area which primarily provides nursing, rehabilitative or custodial services to individuals with varying levels of chronic conditions or disability requiring long term (>90 days) support.
Long Term Care Facility Ventilator Dependent Unit	1259-1	IN:NONACUTE:LTCF:VEN	A unit or designated area which provides nursing and respiratory care to individuals who require mechanical ventilation.
Long Term Care Facility Bariatric Unit	1260-9	IN:NONACUTE:LTCF:BAR	A unit or designated area which provides specialized care for individuals who are preparing for or have undergone bariatric surgery.
LONG TERM ACUTE CARE FACILITIES			
Long Term Acute Care Intensive Care Unit	1220-3	IN:ACUTE:CC:LTAC	Critical care area specializing in the evaluation, treatment, and management of patients that require high observance/acuity and/or special care that are suffering medically complex conditions or who have suffered recent catastrophic illness or injury and require and extended stay in an acute care environment.

CDC Location Label	NHSN Healthcare Service Location Code	CDC Location Code	Location Description
Long Term Acute Care Ward	1221-1	IN:ACUTE:WARD:LTAC	Hospital area for the evaluation and treatment of patients suffering medically complex conditions or who have suffered recent catastrophic illness or injury and require an extended stay in an acute care environment.
Long Term Acute Care Intensive Care Unit	1222-9	IN:ACUTE:CC:LTAC_PED	Critical care area specializing in the evaluation, treatment, and management of patients ≤18 years old, that require high observation/acuity and/or special care that are suffering medically complex conditions or who have suffered recent catastrophic illness or injury and require an extended stay in an acute care environment.
Long Term Acute Care Pediatric Ward	1214-6	IN:ACUTE:WARD:LTAC_PED	Hospital area for the evaluation and treatment of patients ≤ 18 years old, suffering medically complex conditions or who have suffered recent catastrophic illness or injury, and require an extended stay in an acute care environment
INPATIENT REHABILITATION FACILITIES			
Rehabilitation Ward (within freestanding Inpatient Rehabilitation Facility)	1217-9	IN:ACUTE:IRF	Hospital area for evaluation, treatment, and restoration of function to patients have lost function due to acute or chronic pain, musculoskeletal problems, stroke, brain or spinal cord dysfunction, or catastrophic events resulting in complete or partial paralysis.

CDC Location Label	NHSN Healthcare Service Location Code	CDC Location Code	Location Description
Pediatric Rehabilitation Ward (within freestanding Inpatient Rehabilitation Facility)	1218-7	IN:ACUTE:IRF:PED	Hospital area for evaluation, treatment, and restoration of function to patients ≤18 years old who have lost function due to acute or chronic pain, musculoskeletal problems, stroke, brain or spinal cord dysfunction, or catastrophic events results in complete or partial paralysis.
ONCOLOGY FACILITIES			
Oncology Medical Critical Care	1223-7	IN:ACUTE:CC:ONC_M	Critical care area for the care of oncology patients who are being treated for nonsurgical conditions related to their malignancy.
Oncology Surgical Critical Care	1224-5	IN:ACUTE:CC:ONC_S	Critical care area for the evaluation and management of oncology patients with serious illness before and/or after cancer-related surgery.
Oncology Medical-Surgical Critical Care	1225-2	IN:ACUTE:CC:ONC_MS	Critical care area for the care of oncology patients with medical and/or surgical conditions related to their malignancy.
Oncology Pediatric Critical Care	1233-6	IN:ACUTE:CC:ONC_PED	Critical care area for the care of oncology patients ≤18 years old who are being treated for surgical or nonsurgical conditions related to their malignancy.
Oncology Leukemia Ward	1226-0	IN:ACUTE:WARD: ONC_LEUK	Area for the evaluation and treatment of patients with leukemia.



CDC Location Label	NHSN Healthcare Service Location Code	CDC Location Code	Location Description
Oncology Lymphoma Ward	1228-6	IN:ACUTE:WARD:ONC_LYMPH	Area for the evaluation and treatment of patients with lymphoma.
Oncology Leukemia-Lymphoma Ward	1229-4	IN:ACUTE:WARD: ONC_LL	Area for the evaluation and treatment of patients with leukemia and/or lymphoma.
Oncology Solid Tumor Ward	1230-2	IN:ACUTE:WARD:ONC_ST	Area for the evaluation and treatment of oncology patients with solid tumors.
Oncology Hematopoietic Stem Cell Transplant Ward	1231-0	IN:ACUTE:WARD: ONC_HSCT	Area for the care of patients who undergo stem cell transplant for the treatment of cancers and/or blood or immune system disorders.
Oncology General Hematology-Oncology Ward	1232-8	IN:ACUTE:WARD: ONC_HONC	Area for the evaluation and treatment of patients with cancer and/or blood disorders.
Oncology Pediatric Hematopoietic Stem Cell Transplant Ward	1234-4	IN:ACUTE:WARD: ONC_HSCT_PED	Area for the care of patients ≤18 years old who undergo stem cell transplant for the treatment of cancers and/or blood or immune system disorders.
Oncology Pediatric General Hematology-Oncology Ward	1235-1	IN:ACUTE:WARD: ONC_HONC_PED	Area for the evaluation and treatment of patients ≤18 years old with cancer and/or blood disorders.
Oncology Step Down Unit	1227-8	IN:ACUTE:STEP:ONC	Area for oncology patients who are hemodynamically stable and can benefit from close supervision and monitoring, such as frequent pulmonary toilet, vital signs, and/or neurologic and neurovascular checks.

CDC Location Label	NHSN Healthcare Service Location Code	CDC Location Code	Location Description
Oncology Mixed Acuity Unit (all ages)	1236-9	IN:ACUTE:MIXED:ONC	Area for the evaluation and treatment of a mixture of adult and pediatric oncology patients whose conditions are of varying levels of acuity (for example, critical care, ward-level care, step down type care, etc.). This care area may or may not include "acuity adaptable" or "universal" beds (specifically, this model of patient care allows a patient to stay in same bed during all phases of care, from critical care through lower levels of care).
<p>In addition to the 14 ONC specific locations, HOSP-ONC facilities can also use the following locations within NHSN (Location codes and descriptions can be found in the appropriate section of the master location table):</p> <p>Inpatient Locations</p> <ul style="list-style-type: none"> • Operating Rooms: <ul style="list-style-type: none"> • Cardiac Catheterization Room/Suite • Interventional Radiology • Inpatient Operating Room/Suite • Post-Anesthesia Care Unit/Recovery Room • Facility-wide Areas: <ul style="list-style-type: none"> • FACWIDEIN • Miscellaneous Areas: <ul style="list-style-type: none"> • Pulmonary Function Testing • Treatment Room • Transport Service • Float <p>Outpatient Locations</p> <ul style="list-style-type: none"> • Acute Care 			

CDC Location Label	NHSN Healthcare Service Location Code	CDC Location Code	Location Description
<ul style="list-style-type: none"> • 24-Hour Observation Area • Ambulatory Surgery Center • Emergency Department • Outpatient Pediatric Surgery Center • Outpatient Plastic Surgery Center • Outpatient Surgery Recovery Room/Post-Anesthesia Care Unit • Pediatric Emergency Department • Clinic (Nonacute) Settings <ul style="list-style-type: none"> • Infusion Center • Occupational Health Clinic • Outpatient Hematology/Oncology Clinic • Pediatric Hematology/Oncology Clinic • Radiology (includes Nuclear Medicine) • Specimen Collection Area (Healthcare) • Community Locations <ul style="list-style-type: none"> • Home Care • Home-based Hospice • Location outside facility • All Non-Patient Care Locations as designated on page 51 in the location table 			
<p>INPATIENT PSYCHIATRIC FACILITIES</p>			
<p>HOSP-PSYCH facilities can use the following locations within NHSN (Location codes and descriptions can be found in the appropriate section of the master location table):</p> <p>Inpatient Locations</p> <ul style="list-style-type: none"> • Adult Wards <ul style="list-style-type: none"> • Behavioral Health /Psych Ward • Jail Unit 			

CDC Location Label	NHSN Healthcare Service Location Code	CDC Location Code	Location Description
<ul style="list-style-type: none"> • Medical Ward • Medical/Surgical Ward • Pediatric Wards <ul style="list-style-type: none"> • Adolescent Behavioral Health/Psych Ward • Pediatric Behavioral Health/Psych Ward • Mixed Acuity Locations <ul style="list-style-type: none"> • Adult Mixed Acuity • Pediatric Mixed Acuity • Chronic Care Units <ul style="list-style-type: none"> • Chronic Alzheimer’s Unit • Chronic Behavioral Health/Psych Unit • Facility-wide Areas: <ul style="list-style-type: none"> • FACWIDEIN • FACWIDEOUT 			
<p>OUTPATIENT LOCATIONS</p>			
<p>OUTPATIENT AMBULATORY SURGERY CENTERS</p>			
Ambulatory Surgery Center	1243-5	OUT:ASC:OR	Area that is equipped for the performance of surgical operations; can be attached to an ACH or free-standing and has a separate ASC CCN. Operating Room requirements for air changes, temperature, humidity and surfaces must be met.

CDC Location Label	NHSN Healthcare Service Location Code	CDC Location Code	Location Description
Ambulatory Surgery Recovery Room	1245-0	OUT:ASC:OR_STEP	Area designated in an ASC for monitoring patients for the immediate effects of anesthesia.
Outpatient Ambulatory Pediatric Surgery Center	1246-8	OUT:ASC:OR:PED	Area, in an ASC, that is equipped for the performance of surgical operations for persons ≤18 years old; may be free-standing or part of a hospital. Operating Room requirements for air changes, temperature, humidity, and surfaces must be met. Patients do not stay overnight.
Outpatient Ambulatory Plastic Surgery Center	1247-6	OUT:ASC:OR:PLS	Area, in an ASC, that is equipped for the performance of plastic surgery operations; may be free-standing or part of a hospital. Operating Room requirements for air changes, temperature, humidity and surfaces must be met. Patients do not stay overnight.
Pediatric Outpatient Operating Room/Suite (Attached)	1248-4	OUT:ACUTE:OR:HOPD_A_PED	A room or suite equipped for the performance of pediatric surgical operations that is physically within the walls of the affiliated ACH. It is considered a hospital outpatient department used for outpatient pediatric surgical procedures. Requirements for air changes, temperature, humidity, and surfaces must be met.

CDC Location Label	NHSN Healthcare Service Location Code	CDC Location Code	Location Description
Pediatric Outpatient Operating Room/Suite (Detached)	1249-2	OUT:ACUTE:OR:HOPD_D_PED	A room or suite equipped for the performance of pediatric surgical operations that is not physically attached to the affiliated ACH (could be on the same campus or miles away). It is considered a hospital outpatient department used for outpatient pediatric surgical procedures. Requirements for air changes, temperature, humidity, and surfaces must be met.
Outpatient Hemodialysis Clinic - Acute Kidney Injury	1268-2	OUT:NONACUTE:CLINIC:DIAL_A KI	An outpatient setting where Acute Kidney Injury patients are evaluated and receive dialysis several times weekly.
ACUTE CARE FACILITIES GENERAL			
Acute Settings			
24-Hour Observation Area	1162-7	OUT:ACUTE:WARD	Area where patients are monitored for suspected or non-life-threatening conditions for 24 hours or less. More than 50% of patients in this location must be outpatients who are not expected to be admitted to an inpatient unit.
Emergency Department	1108-0	OUT:ACUTE:ED	Area that provides emergency medical services; top priority is given to those with life-threatening illness or injury.



CDC Location Label	NHSN Healthcare Service Location Code	CDC Location Code	Location Description
Mobile Emergency Services/EMS	1174-2	OUT:ACUTE:MOBILE:UE	Mobile unit that provides clinical and emergency medical services to patients who require them in the pre-hospital setting.
Post-Anesthesia Care Unit	1169-2	OUT:ACUTE:OR_STEP	Area designated for monitoring patients for the immediate effects of anesthesia before being sent home.
Outpatient Operating Room/Suite_(Attached)	1242-7	OUT:ACUTE:OR:HOPD_A	A room or suite equipped for the performance of surgical operations that is physically within the walls of the affiliated ACH. <i>It is considered a hospital outpatient department used for outpatient surgical procedures.</i> Requirements for air changes, temperature, humidity, and surfaces must be met.
Outpatient Operating Room/Suite(Detached)	1244-3	OUT:ACUTE:OR:HOPD_D	A room or suite equipped for the performance of surgical operations that is not physically attached to the affiliated ACH (could be on the same campus or miles away). <i>It is considered a hospital outpatient department used for outpatient surgical procedures.</i> Requirements for air changes, temperature, humidity, and surfaces must be met.
Pediatric Emergency Department	1109-8	OUT:ACUTE:ED:PED	Area that provides emergency medical services to patients ≤18 years old; top priority is given to those with life-threatening illness or injury.

CDC Location Label	NHSN Healthcare Service Location Code	CDC Location Code	Location Description
Urgent Care Center	1160-1	OUT:ACUTE:CLINIC:UE	Area that provides medical care services for illnesses and injuries that are not life-threatening.
Clinic (non-acute) Settings			
Allergy Clinic	1110-6	OUT:NONACUTE:CLINIC:ALRG	An outpatient setting for the purpose of providing services to patients with allergies.
Behavioral Health Clinic	1145-2	OUT:NONACUTE:CLINIC:BHV	An outpatient setting for the purpose of providing services to patients with psychiatric or behavior disorders.
Blood Collection Center	1147-8	OUT:NONACUTE:CLINIC:BLOOD	An outpatient setting where blood is collected from donors. This does not include donation centers temporarily set up in non-clinical settings (for example, schools, churches) or mobile blood collection centers.
Cardiac Rehabilitation Center	1112-2	OUT:NONACUTE:CLINIC:C_REHAB	An outpatient setting where patients with cardiac disease, in partnership with a multidisciplinary team of health professionals, are encouraged and supported to achieve and maintain optimal physical health through exercise, nutritional, and psychological counseling.
Cardiology Clinic	1113-0	OUT:NONACUTE:CLINIC:C	An outpatient setting for the evaluation and treatment of patients with cardiac problems.

CDC Location Label	NHSN Healthcare Service Location Code	CDC Location Code	Location Description
Continence Clinic	1148-6	OUT:NONACUTE:CLINIC:CON	An outpatient setting for the evaluation and treatment of patients with incontinence problems.
Dermatology Clinic	1115-5	OUT:NONACUTE:CLINIC:DERM	An outpatient setting for the evaluation and treatment of patients with dermatologic conditions by a dermatologist.
Diabetes-Endocrinology Clinic	1116-3	OUT:NONACUTE:CLINIC:DIAB	An outpatient setting for the evaluation, education, and treatment of persons with diabetes.
Ear, Nose, Throat Clinic	1126-2	OUT:NONACUTE:CLINIC:ENT	An outpatient setting for the evaluation and treatment of conditions related to the ear, nose, and/or throat.
Endoscopy Suite	1007-4	OUT:NONACUTE:DIAG:GI	An area where endoscopic procedures (for example, upper gastrointestinal, lower gastrointestinal endoscopies, bronchoscopy) are performed on outpatients and/or inpatients. Patient care and processing of equipment may take place in this location.
Family Medicine Clinic	1117-1	OUT:NONACUTE:CLINIC:FAM	An outpatient setting for patients who are managed by a family practice physician or group of physicians. Does not include private physician practice.
Genetics Clinic	1122-1	OUT:NONACUTE:CLINIC:GEN	An outpatient setting for testing and counseling of patients with genetic or hereditary disorders.

CDC Location Label	NHSN Healthcare Service Location Code	CDC Location Code	Location Description
Gynecology Clinic	1121-3	OUT:NONACUTE:CLINIC: GYN	An outpatient setting for the evaluation and treatment of women with reproductive tract conditions.
Holistic Medicine Center	1161-9	OUT:NONACUTE:CLINIC: HOL	An outpatient setting where alternative healthcare practices are used, focusing on the physical, mental, emotional, social and spiritual aspects of health.
Hyperbaric Oxygen Center	1017-3	OUT:NONACUTE:CLINIC: HBO	An outpatient setting where therapeutic hyperbaric oxygen is administered.
Infusion Center	1018-1	OUT:NONACUTE:CLINIC: FUS	An outpatient setting for the administration of fluids, blood products and medications.
Mobile Blood Collection Center	1176-7	OUT:NONACUTE:MOBILE: BLOOD	A self-contained mobile unit such as a bus or trailer that is specifically designed and equipped for the collection of blood and blood products from public donors. This unit typically moves from location to location.
Mobile MRI/CT	1175-9	OUT:NONACUTE: MOBILE_DIAG:RAD	A self-contained mobile unit such as a bus or trailer that is equipped with MRI or CT radiologic equipment and that may be moved between healthcare locations (for example, hospitals, clinics).
Neurology Clinic	1123-9	OUT:NONACUTE:CLINIC:N	An outpatient setting for the diagnosis, evaluation, and treatment of persons with neurologic disorders.

CDC Location Label	NHSN Healthcare Service Location Code	CDC Location Code	Location Description
Occupational Health Clinic	1151-0	OUT:NONACUTE:CLINIC: OCC	An outpatient setting where workplace physicals, workplace injury management and immunological evaluations take place
Occupational Therapy Clinic	1152-8	OUT:NONACUTE:CLINIC: OT_REHAB	An outpatient setting where persons with injury or disability are helped to resume activities of daily living with exercise, massage, and other therapies.
Ophthalmology Clinic	1124-7	OUT:NONACUTE:CLINIC: OPH	An outpatient setting for the diagnosis, evaluation and treatment of ophthalmologic disorders.
Orthopedic Clinic	1125-4	OUT:NONACUTE:CLINIC: ORT	An outpatient setting for the diagnosis, evaluation and treatment of orthopedic disorders.
Ostomy Clinic	1149-4	OUT:NONACUTE:CLINIC: OST	An outpatient setting for the management of persons who have had surgical procedure for removing normal bodily wastes through a surgical opening (stoma) on the abdominal wall.
Dental Clinic	1150-2	OUT:NONACUTE:CLINIC: DENT	An outpatient setting that provides dental services, including preventive teeth cleaning, emergency treatment, and comprehensive oral care. This may be a private or group practice or a teaching facility for dentists and/or dental hygienists.

CDC Location Label	NHSN Healthcare Service Location Code	CDC Location Code	Location Description
Gastrointestinal Clinic	1118-9	OUT:NONACUTE:CLINIC:GI	An outpatient setting for the diagnosis, evaluation, and treatment of conditions related to the gastrointestinal tract. Usually includes an endoscopy suite.
Hematology-Oncology Clinic	1200-5	OUT:NONACUTE:CLINIC:HONC	An outpatient setting for the diagnosis, evaluation, and treatment of persons with hematologic and/or oncologic disorders. This may include chemotherapy or blood/blood products infusion services.
Outpatient Hemodialysis Clinic *BV Component USE ONLY	1219-5	OUT:NONACUTE:CLINIC: HD (in inpatient facility)	An outpatient setting where chronic hemodialysis patients are evaluated and receive dialysis several times weekly. - IP facilities
HIV Clinic	1154-4	OUT:NONACUTE:CLINIC:HIV	An outpatient setting for the diagnosis, evaluation, and treatment of persons who are HIV positive or who have AIDS.
Medical Clinic	1120-5	OUT:NONACUTE:CLINIC:M	An outpatient setting for the diagnosis, evaluation and treatment of medical disorders.
Rehabilitation Clinic	1155-1	OUT:NONACUTE:CLINIC:REHAB	An outpatient setting where persons with injury or disability are evaluated and treated to resume activities of daily living, speech and language skills, and maximum physical function. This may include social and psychological evaluation and treatment

CDC Location Label	NHSN Healthcare Service Location Code	CDC Location Code	Location Description
Pain Clinic	1127-0	OUT:NONACUTE:CLINIC: PAIN	An outpatient setting for the evaluation and treatment of persons with chronic or intractable pain.
Pediatric Behavioral Health Clinic	1146-0	OUT:NONACUTE:CLINIC: BHV_PED	An outpatient setting for the evaluation and management of persons ≤18 years old with psychiatric or behavior disorders.
Pediatric Cardiology Center	1129-6	OUT:NONACUTE:CLINIC: PED_C	An outpatient setting for the evaluation and management of persons ≤18 years old with cardiac disorders.
Pediatric Clinic	1128-8	OUT:NONACUTE:CLINIC: PED	An outpatient setting for the evaluation and treatment of persons ≤18 years old.
Pediatric Dental Clinic	1130-4	OUT:NONACUTE:CLINIC: DENT_PED	An outpatient setting that provides dental services, including preventive teeth cleaning, emergency treatment, and comprehensive oral care to persons ≤18 years old. This may be a private or group practice or a teaching facility for dentists and/or dental hygienists.
Pediatric Dermatology Clinic	1131-2	OUT:NONACUTE:CLINIC: DERM_PED	An outpatient setting for the evaluation and management of persons ≤18 years old with dermatologic disorders.
Pediatric Diabetes-Endocrinology Clinic	1132-0	OUT:NONACUTE:CLINIC: DIAB_PED	An outpatient setting for the evaluation and management of persons ≤18 years old with diabetes or other endocrine disorders.

CDC Location Label	NHSN Healthcare Service Location Code	CDC Location Code	Location Description
Pediatric Gastrointestinal Clinic	1119-7	OUT:NONACUTE:CLINIC:GI_PED	An outpatient setting for the evaluation and treatment of persons ≤18 years old with gastrointestinal disorders.
Pediatric Hematology-Oncology Clinic	1136-1	OUT:NONACUTE:CLINIC:HONC_PED	An outpatient setting for the evaluation and treatment of persons ≤18 years old with cancer and/or blood disorders.
Pediatric Nephrology Clinic	1137-9	OUT:NONACUTE:CLINIC:PGU_PED	An outpatient setting for the evaluation and treatment of persons ≤18 years old with disorders of the genitourinary tract.
Pediatric Orthopedic Clinic	1133-8	OUT:NONACUTE:CLINIC:ORT_PED	An outpatient setting for the evaluation and treatment of persons ≤18 years old with fractures or other orthopedic disorders.
Pediatric Rheumatology Clinic	1138-7	OUT:NONACUTE:CLINIC:RHEUM_PED	An outpatient setting for the evaluation and treatment of persons ≤18 years old with rheumatology disorders.
Pediatric Scoliosis Clinic	1134-6	OUT:NONACUTE:CLINIC:SCOL_PED	An outpatient setting for the evaluation and treatment of persons ≤18 years old with scoliosis or other growth disorders of the spine.
Physical Therapy Clinic	1202-1	OUT:NONACUTE:CLINIC:PT_REHAB	An outpatient setting where persons with injury or disability are helped to obtain maximum physical function.
Physician's Office	1141-1	OUT:NONACUTE:CLINIC	A physician's office practice.



CDC Location Label	NHSN Healthcare Service Location Code	CDC Location Code	Location Description
Podiatry Clinic	1140-3	OUT:NONACUTE:CLINIC:POD	An outpatient setting for the evaluation and treatment of patients with conditions or disorders of the feet.
Prenatal Clinic	1156-9	OUT:NONACUTE:CLINIC:PNATL	An outpatient setting for the evaluation and treatment of pregnant women.
Pulmonary Clinic	1157-7	OUT:NONACUTE:CLINIC:PULM	An outpatient setting for the evaluation and treatment of persons with disorders of the respiratory tract.
Pulmonary Function Testing	1009-0	OUT:NONACUTE:DIAG:PULM	Area where the evaluation of a patient's respiratory status takes place.
Radiology	1008-2	OUT:NONACUTE:DIAG:RAD	An area where diagnostic or therapeutic radiologic procedures are done on outpatients and/or inpatients. Operating room requirements for air changes, temperature, humidity, and surfaces are NOT met. (includes Nuclear Medicine)
Rheumatology Clinic	1142-9	OUT:NONACUTE:CLINIC:RHEUM	An outpatient setting for the evaluation and treatment of persons with autoimmune disorders, primarily rheumatoid arthritis.
School or Prison Infirmary	1170-0	OUT:NONACUTE:CLINIC:IFM	Area in a school or correctional facility that provides medical care to students/inmates. This area is not staffed or equipped for overnight stay patients.

CDC Location Label	NHSN Healthcare Service Location Code	CDC Location Code	Location Description
Speech Therapy Clinic	1158-5	OUT:NONACUTE:CLINIC:ST_REHAB	An outpatient setting for the evaluation and treatment of persons with brain injury to maximize their speech, swallow, and language functions.
Surgical Services Clinic	1143-7	OUT:NONACUTE:CLINIC:S	An outpatient setting for the preoperative evaluation and the postoperative management of patients undergoing a surgical procedure.
Well Baby Clinic	1139-5	OUT:NONACUTE:CLINIC:NURS	An outpatient setting for the examination and treatment of normal newborns.
Wound Center	1144-5	OUT:NONACUTE:CLINIC:WND	An outpatient setting for the evaluation and treatment of persons with acute or chronic wounds.
Wound Ostomy Continence Clinic	1159-3	OUT:NONACUTE:CLINIC:WND_OST_CONT	An outpatient area that provides acute and rehabilitative care for people with selective disorders of the gastrointestinal, genitourinary, and integumentary (skin) systems.
Therapeutic Apheresis Clinic	1207-0	OUT:NONACUTE:CLINIC:THERAPHERSIS	Outpatient setting where blood is collected from patients and therapeutic apheresis procedures are performed.

CDC Location Label	NHSN Healthcare Service Location Code	CDC Location Code	Location Description
Miscellaneous Outpatient Settings			
Specimen Collection Area (Healthcare)	1019-9	OUT:NA:LAB:SPEC	An area within a healthcare facility where procedures are performed to collect blood, tissue, and other specimens for diagnostic purposes.
Transport Service	1178-3	OUT:NONACUTE:MOBILE	Mobile unit used to transport patients to their home or from one healthcare setting to another non-emergently.
OUTPATIENT DIALYSIS FACILITIES (Available for use in outpatient ambulatory hemodialysis facilities only)			
Outpatient Hemodialysis Clinic	1153-6	OUT:NONACUTE:CLINIC: DIAL	An outpatient setting for maintenance hemodialysis patients where they are evaluated and dialyzed in-center.
Home Hemodialysis	1262-1	COMM:NONACUTE: HOME:DIAL	Hemodialysis performed by an appropriately trained patient (and the patient’s caregiver) and at home.
MISCELLANEOUS AREAS (Mainly used for Healthcare Personnel Safety component)			
Float	1206-2	IN:ACUTE:FLOAT	VALID IN HPS COMPONENT ONLY
Morgue/Autopsy Room	1189-0	NONPTC:NA:LAB: PATH_MORG	An area within a facility that is used for the storage and/or postmortem examination of deceased persons.

CDC Location Label	NHSN Healthcare Service Location Code	CDC Location Code	Location Description
Sleep Study Unit	1020-7	IN:NONACUTE:CLINIC:SLEEP	Area where patients stay overnight and are evaluated for sleep disorders. (for inpatients and outpatients)
Treatment Room	1209-6	IN:ACUTE:SUPPORT:TREAT	A room in a patient care unit, in which various treatments or procedures requiring special equipment are performed, such as removing sutures, draining a hematoma, packing a wound, or performing an examination.
FACILITY-WIDE LOCATIONS (Available only for Laboratory Identified Event Reporting [LABID] and Antimicrobial Use and Resistance [AUR] Module)			
Facility-wide Inpatient (FacWideIN)	1250-0	FACWIDEIN	Facility-wide Inpatient (FacWIDEIn)
Facility-wide Outpatient (FacWideOUT)	1251-8	FACWIDEOUT	Facility-wide Outpatient (FacWIDEOut)
COMMUNITY LOCATIONS			
Blood Collection (Blood Drive Campaign)	1195-7	COMM:NONACUTE:CLINIC:BLO OD	A location not designed or equipped to perform healthcare functions (for example, school gym or shopping mall) that has been set up specifically to collect donations of blood and blood products from the public.

CDC Location Label	NHSN Healthcare Service Location Code	CDC Location Code	Location Description
Home Care	1192-4	COMM:NONACUTE: HOME	A patient's home location where medical services including routine noninvasive and other invasive procedures (for example, insertion of indwelling urinary catheter, insertion of IV line) are performed by healthcare workers and family members under the supervision of a licensed independent practitioner (for example, MD, CNP, PA).
Home-based Hospice	1194-0	COMM:NONACUTE:HOME:HSP	A patient's home location where end-of-life services are performed by healthcare workers, family members, and volunteers.
Location outside facility	1204-7	COMM:NOTFAC	A location outside this facility, including unknown outside location.
Specimen Collection Area (Community)	1196-5	COMM:NA:LAB:SPEC	A location not designed or equipped to perform healthcare functions (for example, school gym or shopping mall) that has been set up specifically to collect body fluids for healthcare testing. Examples would be blood sugar or cholesterol screening clinics.

CDC Location Label	NHSN Healthcare Service Location Code	CDC Location Code	Location Description
NON-PATIENT CARE LOCATIONS (Non-Patient Care Areas available for use in Biovigilance or Healthcare Personnel Safety Components only)			
Administrative Areas	1184-1	NONPTC:NA:SUPPORT: ADMIN	Areas within a healthcare facility where administrative functions take place. No patient care takes place in these areas.
Assisted Living Area	1106-4	NONPTC:NA:HOME	A location where persons live and have available to them housekeeping, meal preparation, transportation, and other non-medical services. Patient care is not done in this area.
Blood Bank	1185-8	NONPTC:NA:LAB:BLOOD	An area within a healthcare facility that may collect, store, and distribute blood and blood products, and performs diagnostic tests on blood/components to determine compatibilities.
Central Sterile Supply	1186-6	NONPTC:NA:SUPPORT: CSS	An area within a healthcare facility where durable medical equipment is cleaned/decontaminated, wrapped, sterilized, and stored in preparation for patient use.
Central Trash Area	1187-4	NONPTC:NA:SUPPORT: TRASH	An area adjacent to a healthcare facility where biohazardous and non-biohazardous wastes are collected in preparation for transport to a landfill or incineration.



CDC Location Label	NHSN Healthcare Service Location Code	CDC Location Code	Location Description
Centralized Transfusion Service	1261-7	NONPTC:NA:LAB:CTS	A location outside the facility that stores, manipulates, issues, and/or performs compatibility testing on blood and blood products (for example, a contracted transfusion service or a separate hospital that provides transfusion services for your facility).
Clinical Chemistry Laboratory	1011-6	NONPTC:NA:LAB:CHEM	An area within a diagnostic laboratory that performs general clinical chemistry analysis (clinical biochemistry), endocrinology, therapeutic substance monitoring, toxicology, blood pH and blood gas analysis, urinalysis and urine pregnancy testing.
Facility Grounds	1188-2	NONPTC:NA:SUPPORT:GRNDS	Any outdoor area adjacent to a healthcare facility that belongs to the facility (for example, sidewalks, parking ramps, lawns).
General Laboratory	1010-8	NONPTC:NA:LAB	An area that encompasses all clinical divisions within a diagnostic laboratory.
Hematology Laboratory	1012-4	NONPTC:NA:LAB:H	An area within a diagnostic laboratory that determines the specific properties of blood (for example, CBC, white blood count).
Histology-Surgical Pathology Laboratory	1013-2	NONPTC:NA:LAB: HIST_PATH	An area within a diagnostic laboratory that uses high-power microscopy to evaluate cells and tissues for the presence or absence of disease.

CDC Location Label	NHSN Healthcare Service Location Code	CDC Location Code	Location Description
Housekeeping/Environmental Services	1182-5	NONPTC:NA:SUPPORT: HSKP	An area within a healthcare facility where the activities of housekeeping/environmental services staff are coordinated, and supplies are stored.
Laundry Room	1183-3	NONPTC:NA:SUPPORT: LAUN	An area within a healthcare facility where laundry is sorted, washed, dried, and prepared for transport and use.
Microbiology Laboratory	1014-0	NONPTC:NA:LAB:MICRO	An area within a laboratory that performs diagnostic tests to determine the presence or absence of bacteria and their related properties.
Pharmacy	1179-1	NONPTC:NA:SUPPORT: PHARM	An area within a healthcare facility where medications are prepared and labeled for patient use.
Physical Plant Operations Center	1181-7	NONPTC:NA:SUPPORT: ENG	An area within a healthcare facility where construction, renovation, and maintenance staff activities and supplies are coordinated. They may also include areas of machinery and equipment.
Public Area in Facility	1180-9	NONPTC:NA:SUPPORT: PUB	Any indoor area within a healthcare facility that is not used for patient care and that is available to the public (for example, waiting rooms, cafeterias, hallways).
Serology Laboratory	1015-7	NONPTC:NA:LAB:SER	An area within a diagnostic laboratory that performs blood tests to determine the presence or absence of certain diseases or the levels of immunity.

CDC Location Label	NHSN Healthcare Service Location Code	CDC Location Code	Location Description
Soiled Utility Area	1190-8	NONPTC:NA:SUPPORT:SOILED	Area where used and/or soiled disposable or durable medical equipment is stored and/or cleaned in preparation for disposal or reprocessing/reuse.
Virology Laboratory	1016-5	NONPTC:NA:LAB:VIR	An area within a diagnostic laboratory that performs tests and/or culturing to determine the presence or absence of specific viruses.

References

1. American Academy of Pediatrics. Policy Statement Levels of Neonatal Care. *Pediatrics* 2012; 130 (3): 587-597.