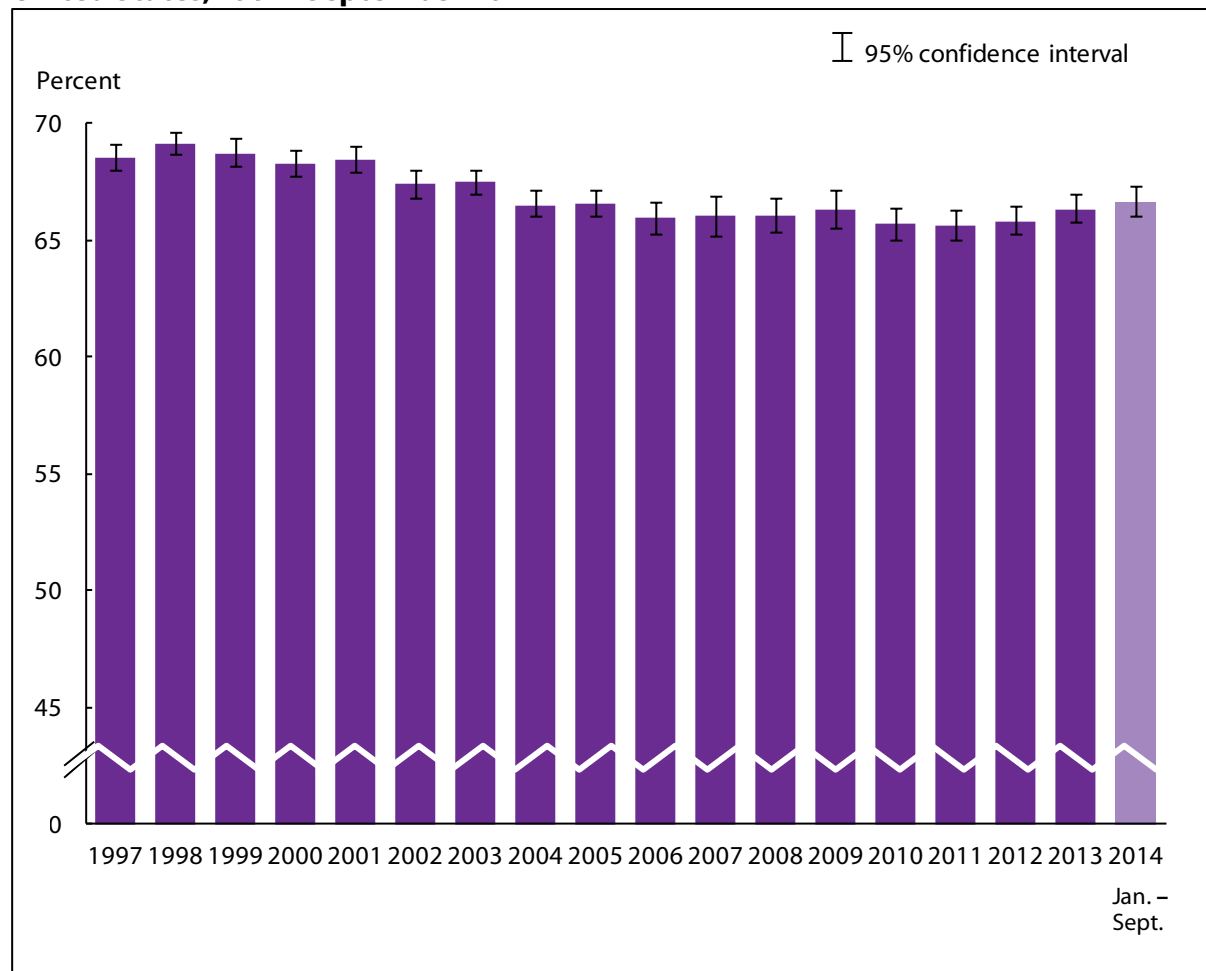


## General health status

**Figure 11.1. Percentage of persons of all ages who had excellent or very good health: United States, 1997–September 2014**

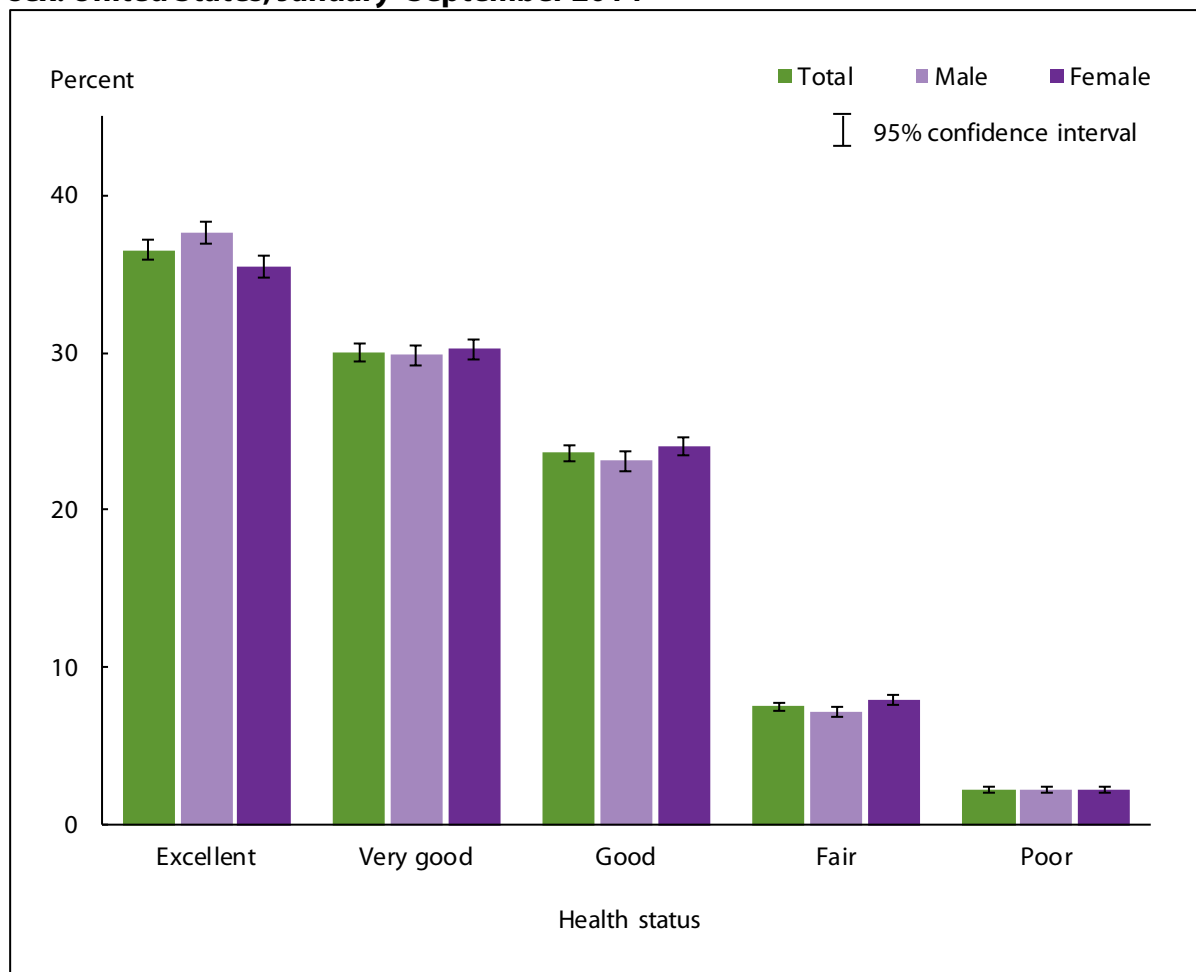


NOTES: Data are based on household interviews of a sample of the civilian noninstitutionalized population. Health status data were obtained by asking respondents to assess their own health and that of family members living in the same household as excellent, very good, good, fair, or poor. The analyses excluded persons with unknown health status (about 0.2% of respondents each year). See [Technical Notes](#) for more details.

DATA SOURCE: CDC/NCHS, National Health Interview Survey, 1997–September 2014, Family Core component.

- For January–September 2014, the percentage of persons who had excellent or very good health was 66.6% (95% confidence interval = 65.96%–67.24%), which was not significantly different from the 2013 estimate of 66.3%.
- The percentage of persons who had excellent or very good health decreased from 68.5% in 1997 to 65.9% in 2006.

**Figure 11.2. Percent distribution of respondent-assessed health status for all ages, by sex: United States, January–September 2014**

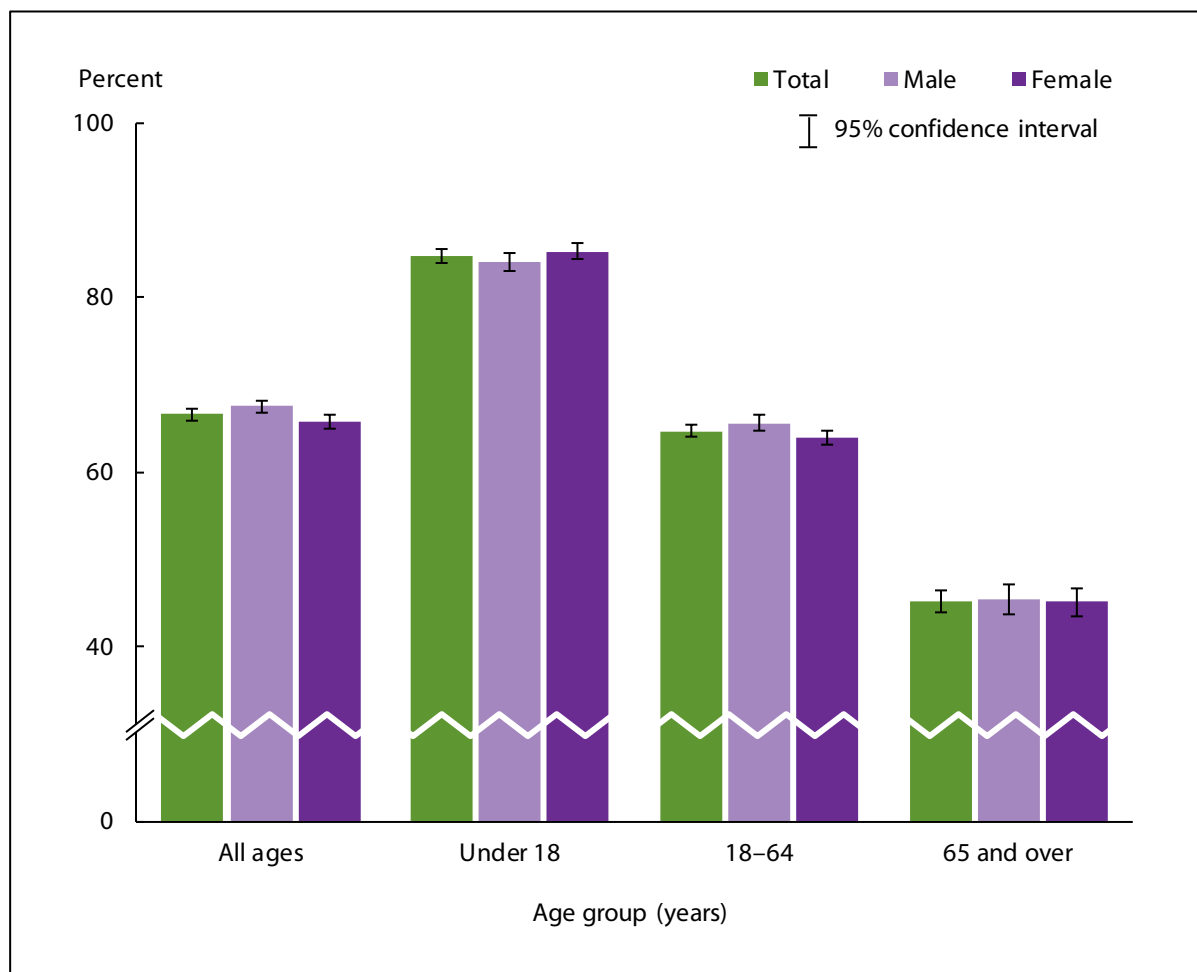


NOTES: Data are based on household interviews of a sample of the civilian noninstitutionalized population. Health status data were obtained by asking respondents to assess their own health and that of family members living in the same household as excellent, very good, good, fair, or poor. The analyses excluded the 0.1% of persons with unknown health status. See [Technical Notes](#) for more details.

DATA SOURCE: CDC/NCHS, National Health Interview Survey, January–September 2014, Family Core component.

- For both sexes combined, most persons' health was either excellent (36.5%) or very good (30.1%). Smaller percentages of persons had good (23.6%), fair (7.6%), or poor (2.2%) health.
- Men were more likely than women to have excellent health. Women were more likely than men to have good or fair health.

**Figure 11.3. Percentage of persons of all ages who had excellent or very good health, by age group and sex: United States, January–September 2014**

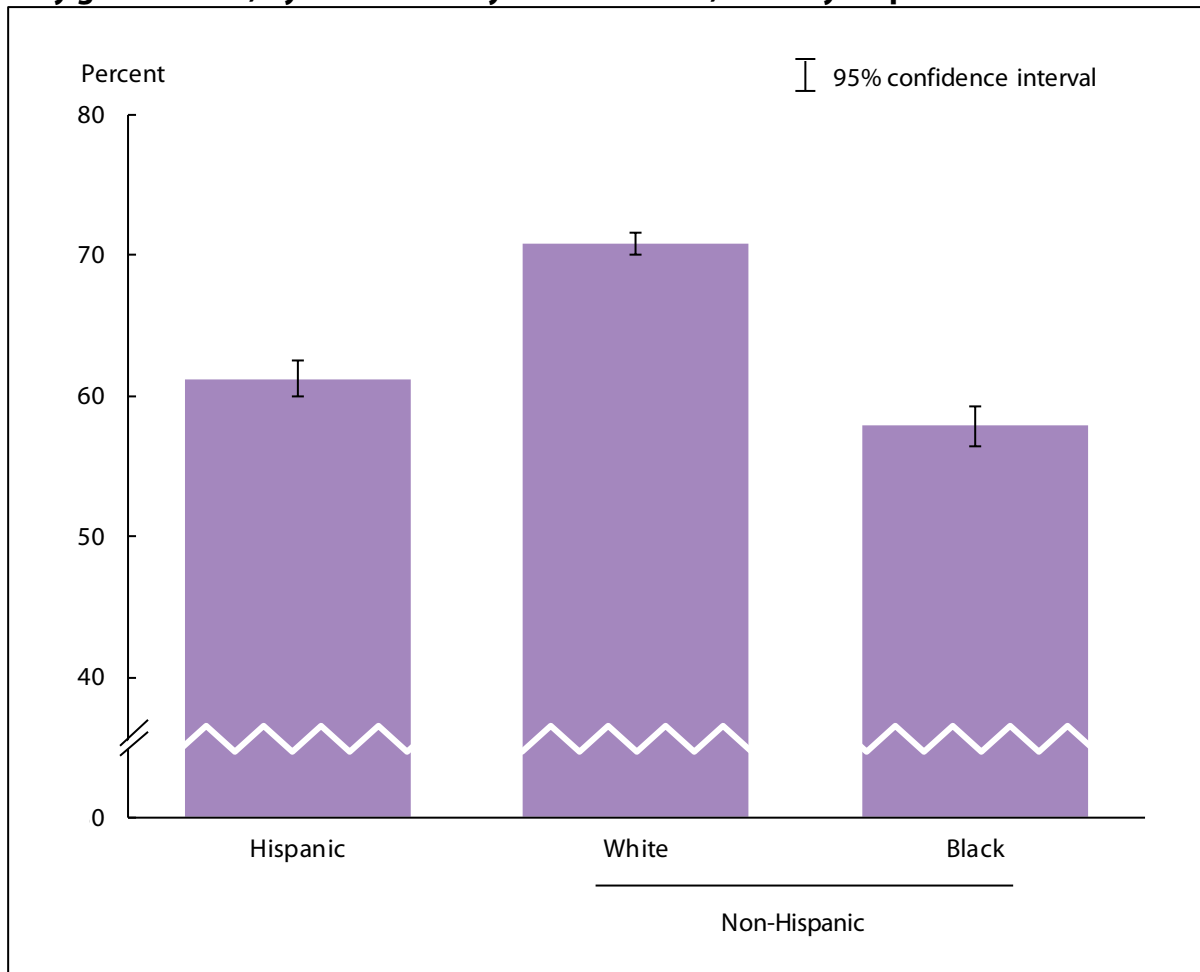


NOTES: Data are based on household interviews of a sample of the civilian noninstitutionalized population. Health status data were obtained by asking respondents to assess their own health and that of family members living in the same household as excellent, very good, good, fair, or poor. The analyses excluded the 0.1% of persons with unknown health status. See [Technical Notes](#) for more details.

DATA SOURCE: CDC/NCHS, National Health Interview Survey, January–September 2014, Family Core component.

- For both sexes combined, the percentage of persons with excellent or very good health decreased with age: 84.7% for those under age 18, 64.7% for those aged 18–64, and 45.2% for those aged 65 and over. This pattern was seen in both men and women.
- For persons of all ages combined and the age group 18–64, men were more likely than women to have excellent or very good health.

**Figure 11.4. Age-sex-adjusted percentage of persons of all ages who had excellent or very good health, by race/ethnicity: United States, January–September 2014**



NOTES: Data are based on household interviews of a sample of the civilian noninstitutionalized population. Health status data were obtained by asking respondents to assess their own health and that of family members living in the same household as excellent, very good, good, fair, or poor. The analyses excluded the 0.1% of persons with unknown health status. Estimates are age-sex adjusted using the projected 2000 U.S. population as the standard population and using three age groups: under 18, 18–64, and 65 and over. See [Technical Notes](#) for more details.

DATA SOURCE: CDC/NCHS, National Health Interview Survey, January–September 2014, Family Core component.

- After adjustment for age and sex, the percentages of persons who had excellent or very good health were 61.2% for Hispanic persons, 70.8% for non-Hispanic white persons, and 57.8% for non-Hispanic black persons.
- Of the three race/ethnicity groups, non-Hispanic white persons were most likely to have excellent or very good health followed by Hispanic and non-Hispanic black persons.

## Data tables for Figures 11.1–11.4:

### Data table for Figure 11.1. Percentage of persons of all ages who had excellent or very good health: United States, 1997–September 2014

Year	Percent	95% confidence interval
1997	68.5	68.0-69.1
1998	69.1	68.6-69.6
1999	68.7	68.1-69.3
2000	68.3	67.7-68.8
2001	68.4	67.9-69.0
2002	67.4	66.8-68.0
2003	67.5	66.9-68.0
2004	66.5	66.0-67.1
2005	66.5	65.98-67.11
2006	65.9	65.25-66.61
2007	66.0	65.18-66.88
2008	66.0	65.30-66.79
2009	66.3	65.46-67.10
2010	65.7	64.95-66.35
2011	65.6	64.98-66.24
2012	65.8	65.19-66.41
2013	66.3	65.70-66.93
January–September 2014	66.6	65.96-67.24

NOTES: Data are based on household interviews of a sample of the civilian noninstitutionalized population. Beginning with 2012 data, the National Health Interview Survey transitioned to weights derived from the 2010 census. For 2003–2011 data, weights were derived from the 2000 census. In this Early Release, estimates for 2000–2002 were recalculated using weights derived from the 2000 census. For 1997–1999 data, weights were derived from the 1990 census. See [Technical Notes](#) for more details.

DATA SOURCE: CDC/NCHS, National Health Interview Survey, 1997–September 2014, Family Core component.

**Data table for Figure 11.2. Percent distribution of respondent-assessed health status, by sex for all ages: United States, January–September 2014**

Health status and sex	Percent	95% confidence interval
Excellent, total	36.5	35.90-37.19
Excellent, male	37.6	36.90-38.38
Excellent, female	35.5	34.80-36.20
Very good, total	30.1	29.50-30.61
Very good, male	29.9	29.23-30.47
Very good, female	30.3	29.63-30.88
Good, total	23.6	23.09-24.14
Good, male	23.1	22.53-23.76
Good, female	24.1	23.47-24.65
Fair, total	7.6	7.28-7.82
Fair, male	7.1	6.82-7.46
Fair, female	7.9	7.62-8.27
Poor, total	2.2	2.09-2.38
Poor, male	2.2	2.02-2.42
Poor, female	2.2	2.08-2.41

NOTE: Data are based on household interviews of a sample of the civilian noninstitutionalized population.

DATA SOURCE: CDC/NCHS, National Health Interview Survey, January–September 2014, Family Core component.

**Data table for Figure 11.3. Percentage of persons of all ages who had excellent or very good health, by age group and sex: United States, January–September 2014**

Age (years) and sex	Percent	95% confidence interval
Under 18, total	84.7	83.84-85.53
Under 18, male	84.1	83.10-85.16
Under 18, female	85.3	84.31-86.20
18–64, total	64.7	63.93-65.43
18–64, male	65.5	64.62-66.45
18–64, female	63.9	63.07-64.64
65 and over, total	45.2	43.96-46.52
65 and over, male	45.5	43.80-47.11
65 and over, female	45.1	43.49-46.65
All ages (crude <sup>1</sup> ), total	66.6	65.96-67.24
All ages (crude <sup>1</sup> ), male	67.5	66.78-68.21
All ages (crude <sup>1</sup> ), female	65.8	65.05-66.45
All ages (age-adjusted <sup>2</sup> ), total	67.4	66.77-67.99
All ages (age-adjusted <sup>2</sup> ), male	67.8	67.10-68.49
All ages (age-adjusted <sup>2</sup> ), female	67.0	66.35-67.65

<sup>1</sup>Crude estimates are presented in the figure.

<sup>2</sup>Estimates are age adjusted using the projected 2000 U.S. population as the standard population and using three age groups: under 18, 18–64, and 65 and over.

NOTE: Data are based on household interviews of a sample of the civilian noninstitutionalized population.

DATA SOURCE: CDC/NCHS, National Health Interview Survey, January–September 2014, Family Core component.

**Data table for Figure 11.4. Age-sex-adjusted percentage of persons of all ages who had excellent or very good health, by race/ethnicity: United States, January–September 2014**

Race/ethnicity	Percent <sup>1</sup>	95% confidence interval
Hispanic or Latino	61.2	59.97-62.47
Not Hispanic or Latino, single race, white	70.8	70.07-71.56
Not Hispanic or Latino, single race, black	57.8	56.37-59.31

<sup>1</sup>Estimates are age-sex-adjusted using the projected 2000 U.S. population as the standard population and using three age groups: under 18, 18–64, and 65 and over.

NOTE: Data are based on household interviews of a sample of the civilian noninstitutionalized population.

DATA SOURCE: CDC/NCHS, National Health Interview Survey, January–September 2014, Family Core component.