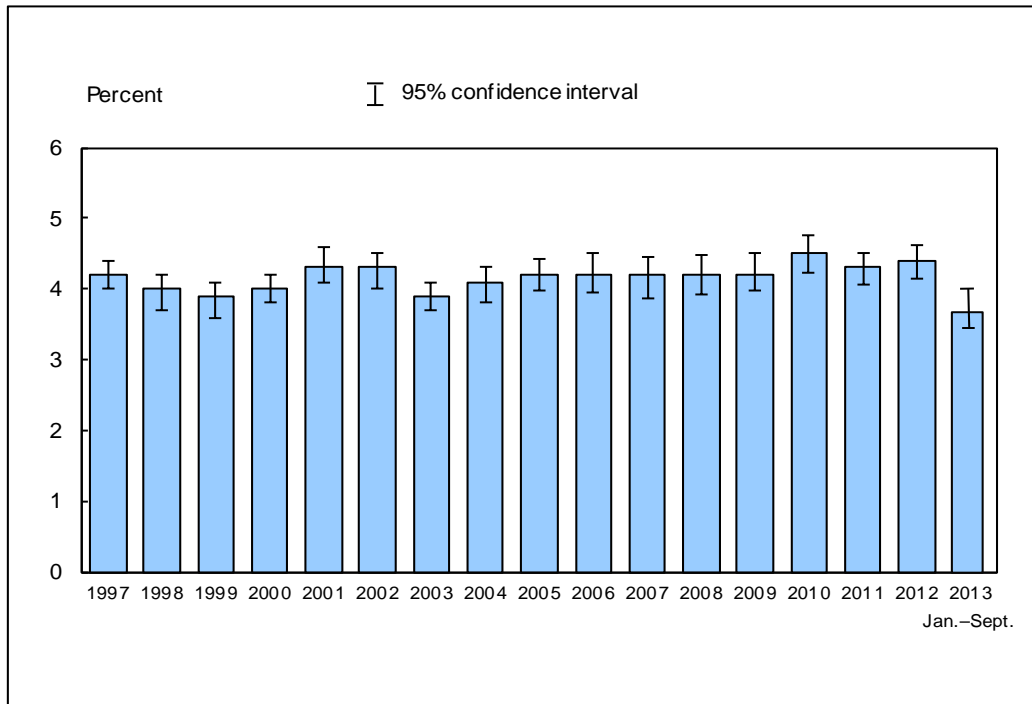


**Figure 15.1. Percentage of persons of all ages who experienced an asthma episode in the past 12 months: United States, 1997–September 2013**

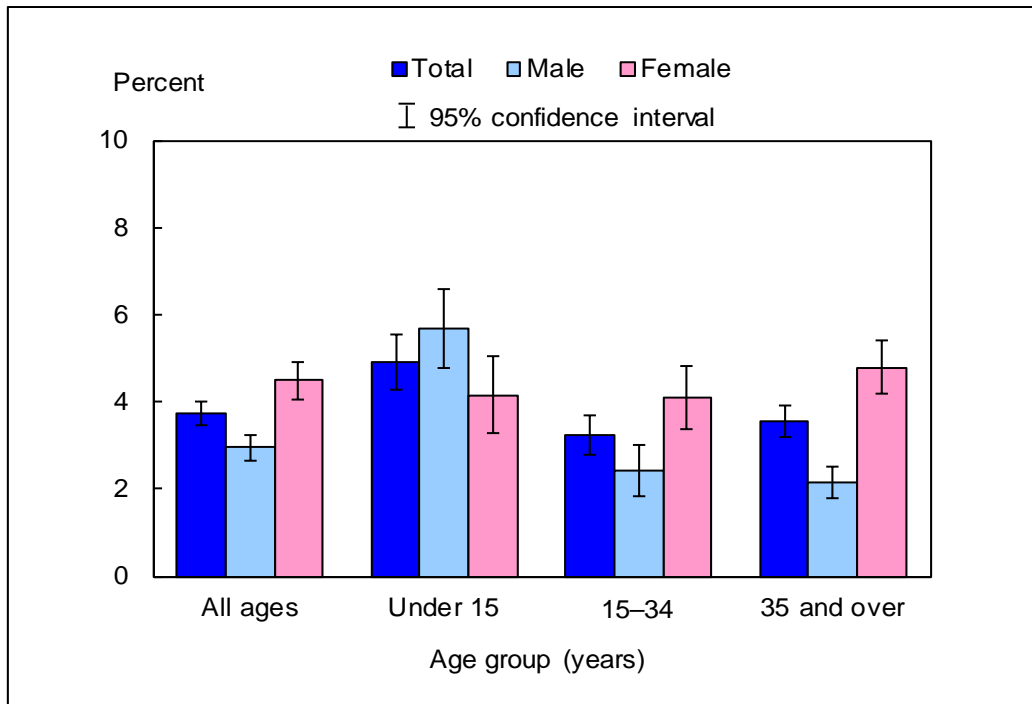


DATA SOURCE: CDC/NCHS, National Health Interview Survey, 1997–September 2013, combined Sample Adult and Sample Child Core components.

- For January–September 2013, the percentage of persons of all ages who experienced an asthma episode in the past 12 months was 3.7% (95% confidence interval = 3.47%–4.00%), which was lower than the 2012 estimate of 4.4%.
- The percentage of persons of all ages who experienced an asthma episode in the past 12 months was lowest in January–September 2013 (3.7%) and highest in 2010 (4.5%).

NOTES: Data are based on household interviews of a sample of the civilian noninstitutionalized population. • Information on an episode of asthma or asthma attack during the past 12 months is self-reported by adults aged 18 and over. For children under age 18, the information is collected from an adult family member, usually a parent, who is knowledgeable about the child's health. • The analyses excluded people with unknown asthma episode status (about 0.1% of respondents each year). • See [Technical Notes](#) for more details.

**Figure 15.2. Percentage of persons of all ages who experienced an asthma episode in the past 12 months, by age group and sex: United States, January–September 2013**

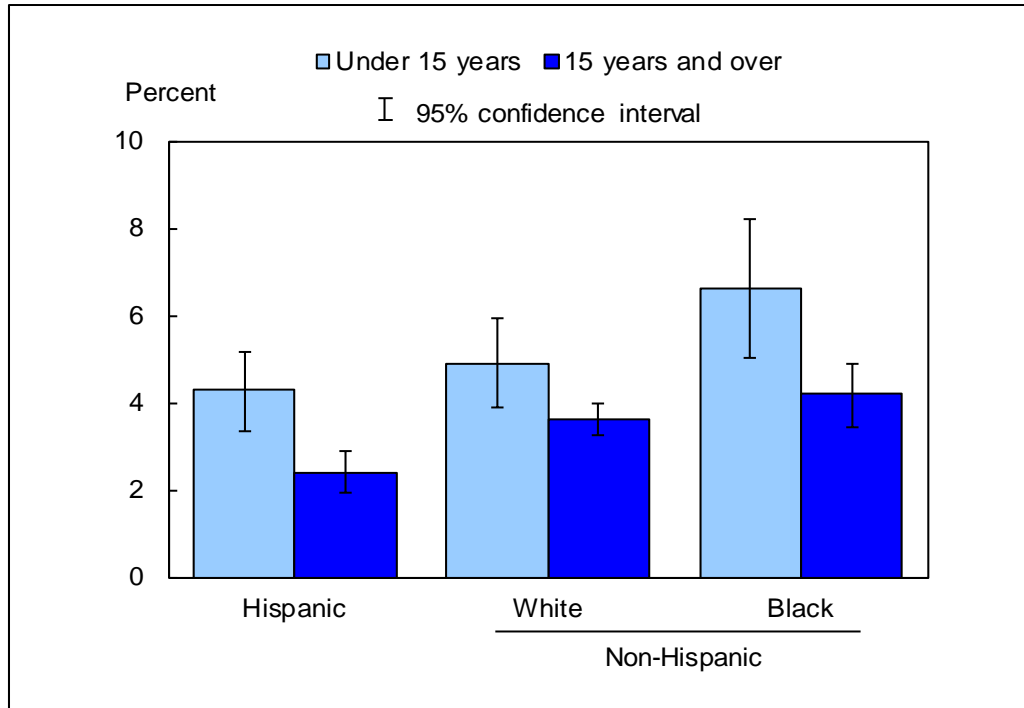


DATA SOURCE: CDC/NCHS, National Health Interview Survey, January–September 2013, combined Sample Adult and Sample Child Core components.

- For both sexes combined, the percentage of persons who had an asthma episode in the past 12 months was higher among children under age 15 than among persons aged 15–34 and 35 and over. This pattern was also found among males.
- For persons of all ages and for the age groups 15–34 and 35 and over, the percentage of persons who had an asthma episode in the past 12 months was higher among females than among males. For children under age 15, the percentage who had an asthma episode in the past 12 months was higher among boys than among girls.

NOTES: Data are based on household interviews of a sample of the civilian noninstitutionalized population. • Information on an episode of asthma or asthma attack during the past 12 months is self-reported by adults aged 18 and over. For children under age 18, the information is collected from an adult family member, usually a parent, who is knowledgeable about the child's health. • The analyses excluded the 0.1% of persons with unknown asthma episode status. • See [Technical Notes](#) for more details.

**Figure 15.3. Sex-adjusted percentage of persons of all ages who experienced an asthma episode in the past 12 months, by age group and race/ethnicity: United States, January–September 2013**

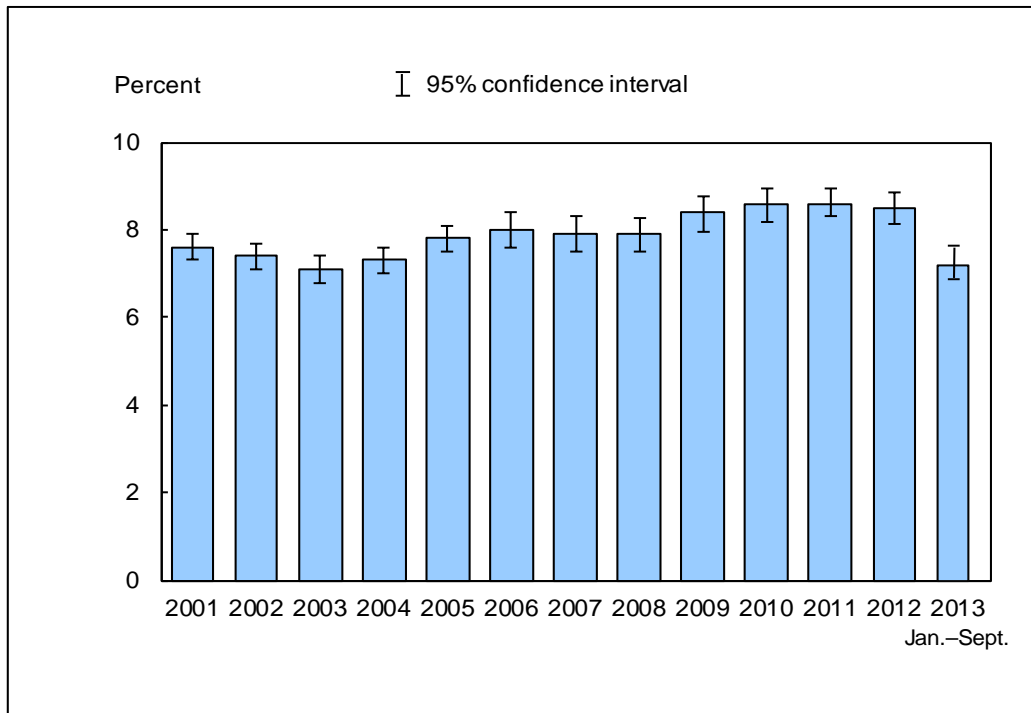


DATA SOURCE: CDC/NCHS, National Health Interview Survey, January–September 2013, combined Sample Adult and Sample Child Core components.

- For children under age 15, the sex-adjusted percentage who had an asthma episode in the past 12 months was 4.3% for Hispanic children, 4.9% for non-Hispanic white children, and 6.6% for non-Hispanic black children.
- For persons aged 15 and over, the sex-adjusted percentage who had an asthma episode in the past 12 months was 2.4% for Hispanic persons, 3.6% for non-Hispanic white persons, and 4.2% for non-Hispanic black persons.
- After adjustment for sex, Hispanic persons under age 15 were less likely to have had an asthma episode in the past 12 months than were non-Hispanic black persons. Hispanic persons aged 15 and over were less likely to have had an asthma episode in the past 12 months than were non-Hispanic white persons and non-Hispanic black persons.

NOTES: Data are based on household interviews of a sample of the civilian noninstitutionalized population. • Information on an episode of asthma or asthma attack during the past 12 months is self-reported by adults aged 18 years and over. For children under age 18, the information is collected from an adult family member, usually a parent, who is knowledgeable about the child's health. • The analyses excluded the 0.1% of persons with unknown asthma episode status. • Additional estimates of asthma episodes in the past 12 months among persons with current asthma are provided in the Data table for Figure 15.3. • See [Technical Notes](#) for more details.

**Figure 15.4. Prevalence of current asthma among persons of all ages: United States, 2001–September 2013**

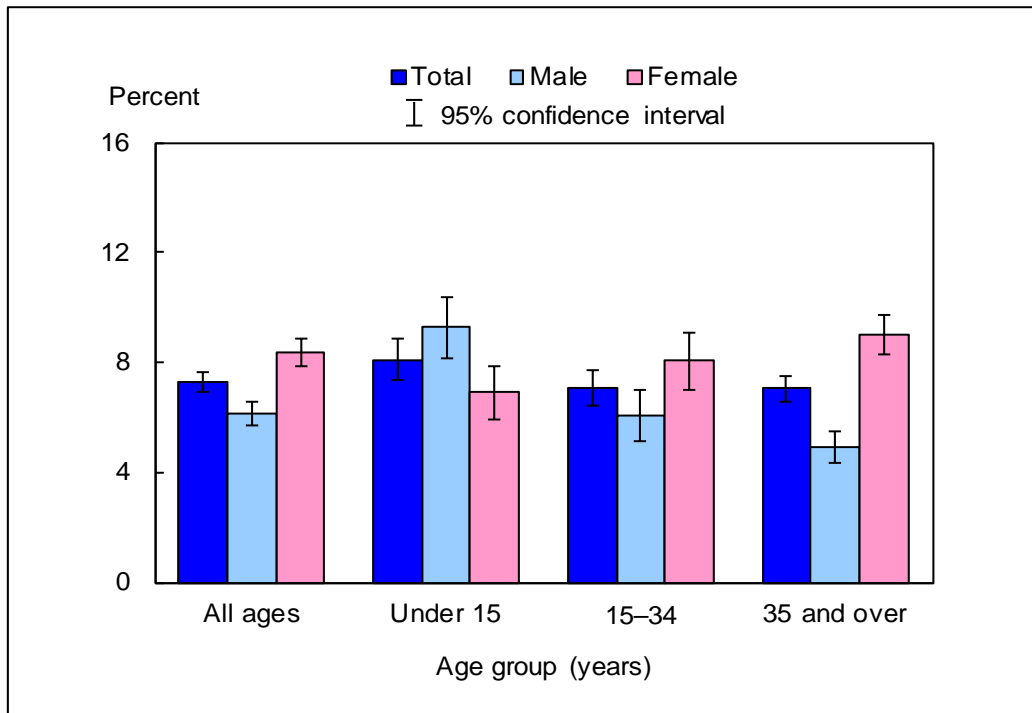


DATA SOURCE: CDC/NCHS, National Health Interview Survey, 2001–September 2013, combined Sample Adult and Sample Child Core components.

- For January–September 2013, 7.3% (95% confidence interval = 6.90%–7.63%) of persons of all ages currently had asthma. This was lower than the 2012 estimate of 8.5%.
- The percentage of current asthma among persons of all ages was lowest in 2003 (7.1%) and highest in 2010 and 2011 (8.6%).

NOTES: Data are based on household interviews of a sample of the civilian noninstitutionalized population. • Beginning in 2001, respondents were asked about current asthma in addition to the question regarding asthma episodes. Information on current asthma is self-reported by adults aged 18 and over. For children under age 18, the information is collected from an adult family member, usually a parent, who is knowledgeable about the child's health. • The analyses excluded people with unknown current asthma status (about 0.2% of respondents each year). • See [Technical Notes](#) for more details.

**Figure 15.5. Prevalence of current asthma among persons of all ages, by age group and sex: United States, January–September 2013**

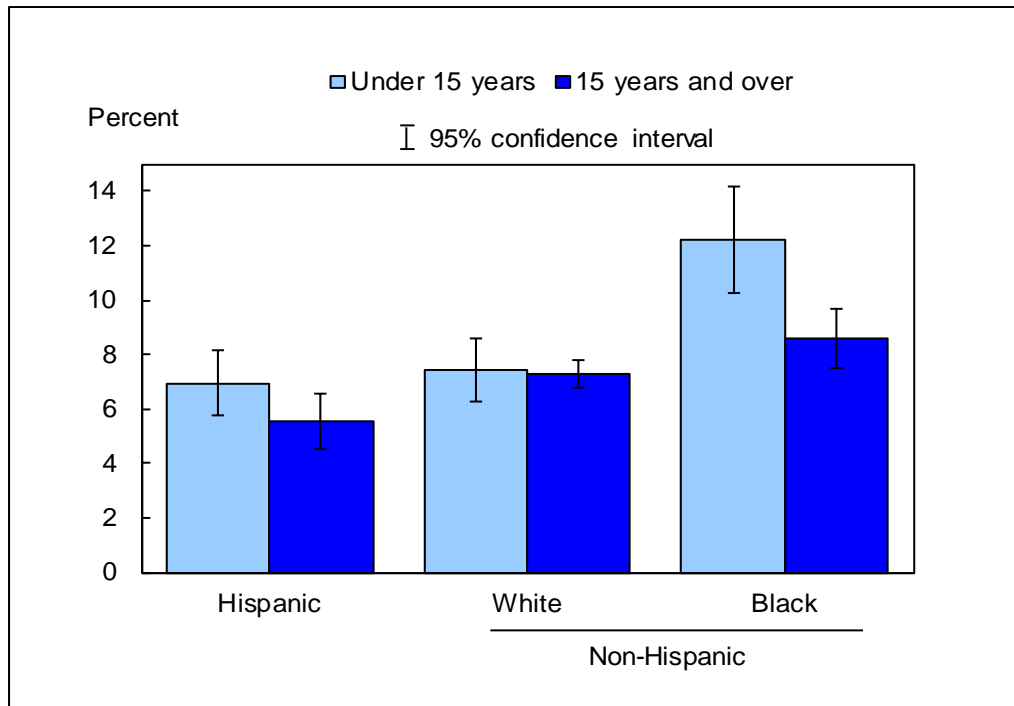


DATA SOURCE: CDC/NCHS, National Health Interview Survey, January–September 2013, combined Sample Adult and Sample Child Core components.

- For both sexes combined, persons aged 15–34 and 35 and over were less likely to currently have asthma than were persons under age 15.
- For persons of all ages, and for persons aged 15–34 and 35 and over, the prevalence of current asthma was higher among females than males. For persons under age 15, the prevalence of current asthma was higher among males than females.

NOTES: Data are based on household interviews of a sample of the civilian noninstitutionalized population. • Information on current asthma is self-reported by adults aged 18 and over. For children under age 18, the information is collected from an adult family member, usually a parent, who is knowledgeable about the child's health. • The analyses excluded the 0.2% of persons with unknown current asthma status. • See [Technical Notes](#) for more details.

**Figure 15.6. Sex-adjusted prevalence of current asthma among persons of all ages, by age group and race/ethnicity: United States, January–September 2013**



DATA SOURCE: CDC/NCHS, National Health Interview Survey, January–September 2013, combined Sample Adult and Sample Child Core components.

- For children under age 15, the sex-adjusted prevalence of current asthma was 7.0% for Hispanic children, 7.4% for non-Hispanic white children, and 12.2% for non-Hispanic black children.
- For persons aged 15 and over, the sex-adjusted prevalence of current asthma was lowest among Hispanic persons (5.5%), followed by non-Hispanic white persons (7.3%) and non-Hispanic black persons (8.6%).

NOTES: Data are based on household interviews of a sample of the civilian noninstitutionalized population. • Information on current asthma is self-reported by adults aged 18 and over. For children under age 18, the information is collected from an adult family member, usually a parent, who is knowledgeable about the child's health. • The analyses excluded the 0.2% of persons with unknown current asthma status. • See [Technical Notes](#) for more details.

## Data tables for Figures 15.1–15.6:

### Data table for Figure 15.1. Percentage of persons of all ages who experienced an asthma episode in the past 12 months: United States, 1997–September 2013

Year	Crude <sup>1</sup> percent (95% confidence interval)	Age-adjusted <sup>2</sup> percent (95% confidence interval)
1997	4.2 (4.0–4.4)	4.2 (3.9–4.4)
1998	4.0 (3.7–4.2)	3.9 (3.7–4.2)
1999	3.9 (3.6–4.1)	3.9 (3.6–4.1)
2000	4.0 (3.8–4.2)	4.0 (3.8–4.2)
2001	4.3 (4.1–4.6)	4.3 (4.1–4.5)
2002	4.3 (4.0–4.5)	4.3 (4.0–4.5)
2003	3.9 (3.7–4.1)	3.9 (3.7–4.1)
2004	4.1 (3.8–4.3)	4.1 (3.8–4.3)
2005	4.2 (3.99–4.43)	4.2 (4.00–4.44)
2006	4.2 (3.96–4.52)	4.3 (3.98–4.54)
2007	4.2 (3.87–4.46)	4.2 (3.88–4.47)
2008	4.2 (3.91–4.48)	4.2 (3.93–4.50)
2009	4.2 (3.97–4.52)	4.3 (3.99–4.54)
2010	4.5 (4.24–4.77)	4.5 (4.25–4.78)
2011	4.3 (4.06–4.52)	4.3 (4.08–4.54)
2012	4.4 (4.15–4.63)	4.4 (4.17–4.65)
January–September 2013	3.7 (3.47–4.00)	3.8 (3.49–4.03)

<sup>1</sup>Crude estimates are presented in the figure.

<sup>2</sup>Estimates are age adjusted using the projected 2000 U.S. population as the standard population and using three age groups: 0–14, 15–34, and 35 and over.

NOTES: Data are based on household interviews of a sample of the civilian noninstitutionalized population. Beginning with the 2012 data, the National Health Interview Survey transitioned to weights derived from the 2010 census. For 2003–2011 data, weights were derived from the 2000 census. In this Early Release, estimates for 2000–2002 were recalculated using weights derived from the 2000 census. For 1997–1999 data, weights were derived from the 1990 census. See [Technical Notes](#) for more details.

DATA SOURCE: CDC/NCHS, National Health Interview Survey, 1997–September 2013, combined Sample Adult and Sample Child Core components.

**Data table for Figure 15.2. Percentage of persons of all ages who experienced an asthma episode in the past 12 months, by age group and sex: United States, January–September 2013**

Age (years) and sex	Percent	95% confidence interval
Under 15, total	4.9	4.29–5.56
Under 15, male	5.7	4.76–6.58
Under 15, female	4.2	3.27–5.04
15–34, total	3.2	2.80–3.69
15–34, male	2.4	1.84–3.00
15–34, female	4.1	3.35–4.80
35 and over, total	3.5	3.19–3.90
35 and over, male	2.2	1.79–2.52
35 and over, female	4.8	4.20–5.39
All ages (crude <sup>1</sup> ), total	3.7	3.47–4.00
All ages (crude <sup>1</sup> ), male	3.0	2.66–3.24
All ages (crude <sup>1</sup> ), female	4.5	4.07–4.90
All ages (age-adjusted <sup>2</sup> ), total	3.8	3.49–4.03
All ages (age-adjusted <sup>2</sup> ), male	3.0	2.69–3.27
All ages (age-adjusted <sup>2</sup> ), female	4.5	4.04–4.88

<sup>1</sup>Crude estimates are presented in the figure.

<sup>2</sup>Estimates are age adjusted using the projected 2000 U.S. population as the standard population and using three age groups: 0–14, 15–34, and 35 and over.

NOTE: Data are based on household interviews of a sample of the civilian noninstitutionalized population.

DATA SOURCE: CDC/NCHS, National Health Interview Survey, January–September 2013, combined Sample Adult and Sample Child Core components.



**Data table for Figure 15.3. Sex-adjusted percentage of persons who experienced an asthma episode in the past 12 months, among all persons and among persons with current asthma, by age group and race/ethnicity: United States, January–September 2013**

<b>Age (years) and race/ethnicity</b>	<b>Percent<sup>1</sup> among all persons (95% confidence interval)</b>	<b>Percent<sup>1</sup> among persons with current asthma (95% confidence interval)</b>
Under 15, Hispanic or Latino	4.3 (3.35–5.18)	62.5 (54.85–70.15)
Under 15, not Hispanic or Latino, single race, white	4.9 (3.90–5.94)	66.0 (58.27–73.73)
Under 15, not Hispanic or Latino, single race, black	6.6 (5.01–8.20)	53.0 (43.65–62.31)
15 and over, Hispanic or Latino	2.4 (1.92–2.90)	41.5 (33.48–49.44)
15 and over, not Hispanic or Latino, single race, white	3.6 (3.23–3.96)	47.8 (44.31–51.33)
15 and over, not Hispanic or Latino, single race, black	4.2 (3.43–4.90)	48.5 (42.20–54.82)

<sup>1</sup>Estimates for all persons are presented in the figure. Estimates are sex adjusted using the projected 2000 U.S. population as the standard population.

NOTE: Data are based on household interviews of a sample of the civilian noninstitutionalized population.

DATA SOURCE: CDC/NCHS, National Health Interview Survey, January–September 2013, combined Sample Adult and Sample Child Core components.

**Data table for Figure 15.4. Prevalence of current asthma among persons of all ages:  
 United States, 2001–September 2013**

Year	Crude <sup>1</sup> percent (95% confidence interval)	Age-adjusted <sup>2</sup> percent (95% confidence interval)
2001	7.6 (7.3–7.9)	7.6 (7.3–7.9)
2002	7.4 (7.1–7.7)	7.4 (7.1–7.7)
2003	7.1 (6.8–7.4)	7.1 (6.8–7.4)
2004	7.3 (7.0–7.6)	7.3 (7.1–7.7)
2005	7.8 (7.50–8.10)	7.8 (7.51–8.11)
2006	8.0 (7.61–8.41)	8.0 (7.62–8.43)
2007	7.9 (7.50–8.31)	7.9 (7.51–8.33)
2008	7.9 (7.48–8.27)	7.9 (7.51–8.30)
2009	8.4 (7.97–8.76)	8.4 (7.99–8.78)
2010	8.6 (8.19–8.94)	8.6 (8.20–8.95)
2011	8.6 (8.31–8.93)	8.6 (8.32–8.95)
2012	8.5 (8.12–8.86)	8.5 (8.15–8.88)
January–September 2013	7.3 (6.90–7.63)	7.3 (6.91–7.64)

<sup>1</sup>Crude estimates are presented in the figure.

<sup>2</sup>Estimates are age adjusted using the projected 2000 U.S. population as the standard population and using three age groups: 0–14, 15–34, and 35 and over.

NOTES: Data are based on household interviews of a sample of the civilian noninstitutionalized population. Beginning with the 2012 data, the National Health Interview Survey transitioned to weights derived from the 2010 census. For 2003–2011 data, weights were derived from the 2000 census. In this Early Release, estimates for 2000–2002 were recalculated using weights derived from the 2000 census. For 1997–1999 data, weights were derived from the 1990 census. See [Technical Notes](#) for more details.

DATA SOURCE: CDC/NCHS, National Health Interview Survey, 2001–September 2013, combined Sample Adult and Sample Child Core components.

**Data table for Figure 15.5. Prevalence of current asthma among persons of all ages, by age group and sex: United States, January–September 2013**

Age (years) and sex	Percent	95% confidence interval
Under 15, total	8.1	7.36–8.85
Under 15, male	9.3	8.15–10.38
Under 15, female	6.9	5.90–7.89
15–34, total	7.1	6.40–7.71
15–34, male	6.1	5.12–6.99
15–34, female	8.0	6.98–9.10
35 and over, total	7.1	6.59–7.53
35 and over, male	4.9	4.34–5.47
35 and over, female	9.0	8.29–9.71
All ages (crude <sup>1</sup> ), total	7.3	6.90–7.63
All ages (crude <sup>1</sup> ), male	6.1	5.67–6.57
All ages (crude <sup>1</sup> ), female	8.3	7.83–8.87
All ages (age-adjusted <sup>2</sup> ), total	7.3	6.91–7.64
All ages (age-adjusted <sup>2</sup> ), male	6.2	5.71–6.60
All ages (age-adjusted <sup>2</sup> ), female	8.3	7.77–8.80

<sup>1</sup>Crude estimates are presented in the figure.

<sup>2</sup>Estimates are age adjusted using the projected 2000 U.S. population as the standard population and using three age groups: 0–14, 15–34, and 35 and over.

NOTE: Data are based on household interviews of a sample of the civilian noninstitutionalized population.

DATA SOURCE: CDC/NCHS, National Health Interview Survey, January–September 2013, combined Sample Adult and Sample Child Core components.

**Data table for Figure 15.6. Sex-adjusted prevalence of current asthma among persons of all ages, by age group and race/ethnicity: United States, January–September 2013**

Age (years) and race/ethnicity	Percent <sup>1</sup>	95% confidence interval
Under 15, Hispanic or Latino	7.0	5.76–8.14
Under 15, not Hispanic or Latino, single race, white	7.4	6.26–8.59
Under 15, not Hispanic or Latino, single race, black	12.2	10.27–14.18
15 and over, Hispanic or Latino	5.5	4.50–6.56
15 and over, not Hispanic or Latino, single race, white	7.3	6.80–7.78
15 and over, not Hispanic or Latino, single race, black	8.6	7.51–9.69

<sup>1</sup>Estimates are sex adjusted using the projected 2000 U.S. population as the standard population.

NOTE: Data are based on household interviews of a sample of the civilian noninstitutionalized population.

DATA SOURCE: CDC/NCHS, National Health Interview Survey, January–September 2013, combined Sample Adult and Sample Child Core components.