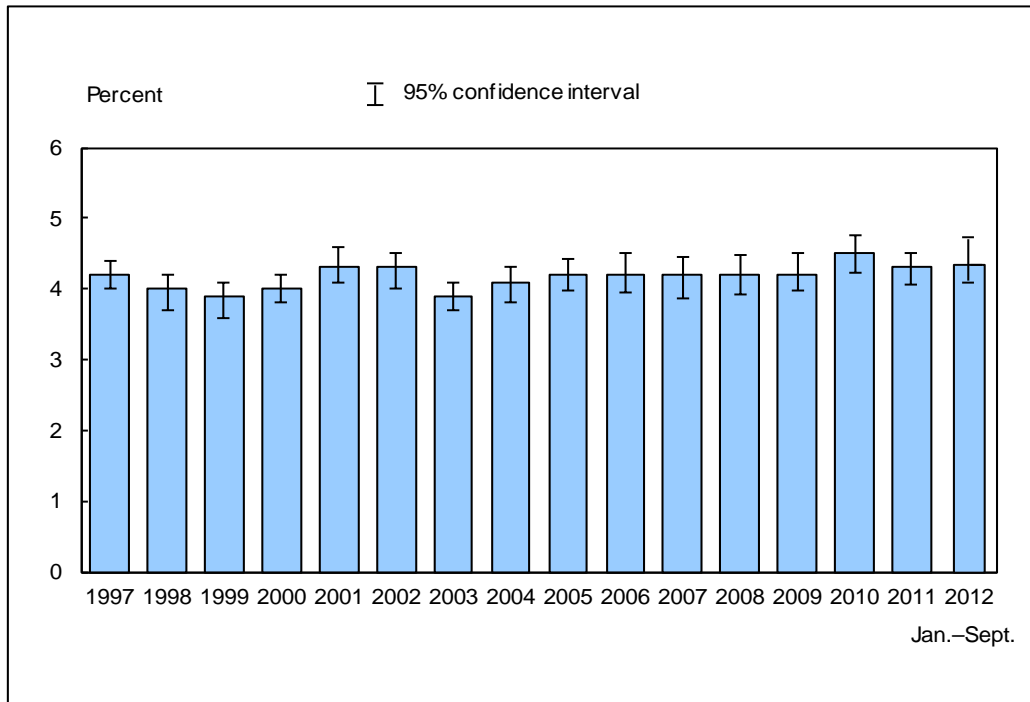


Figure 15.1. Percentage of persons of all ages who experienced an asthma episode in the past 12 months: United States, 1997–September 2012

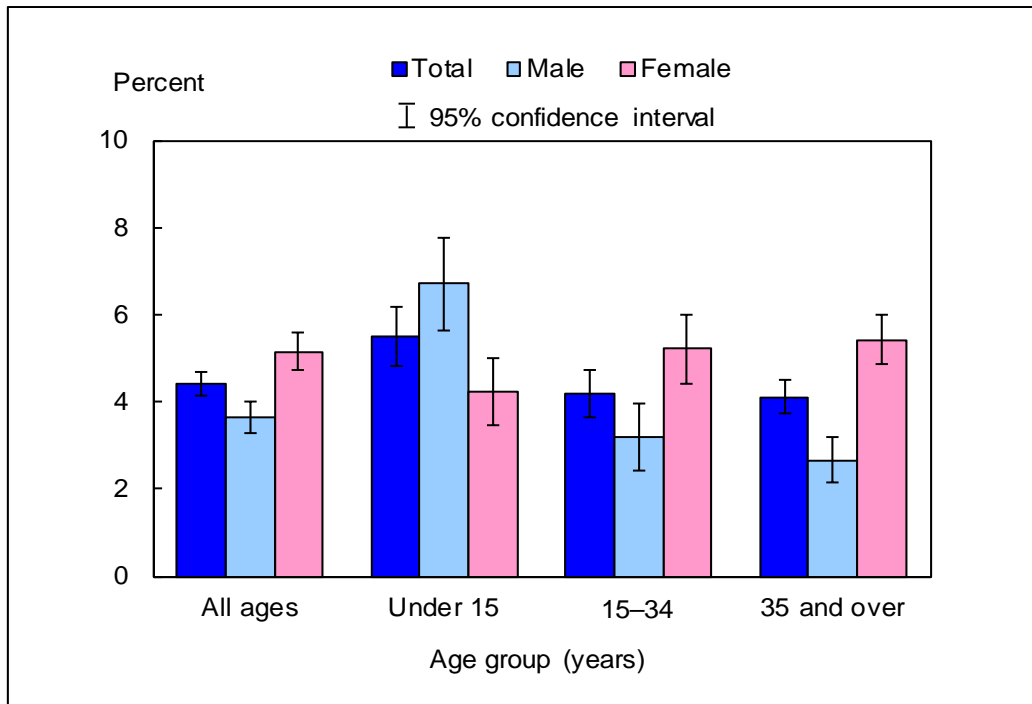


DATA SOURCE: CDC/NCHS, National Health Interview Survey, 1997–September 2012, combined Sample Adult and Sample Child Core components.

- For January–September 2012, the percentage of persons of all ages who experienced an asthma episode in the past 12 months was 4.4% (95% confidence interval = 4.13%–4.69%), which was not significantly different from the 2011 estimate of 4.3%.
- The percentage of persons of all ages who experienced an asthma episode in the past 12 months was lowest in 1999 and 2003 (3.9%) and highest in 2010 (4.5%).

NOTES: Data are based on household interviews of a sample of the civilian noninstitutionalized population. • Information on an episode of asthma or asthma attack during the past 12 months is self-reported by adults aged 18 and over. For children under age 18, the information is collected from an adult family member, usually a parent, who is knowledgeable about the child's health. • The analyses excluded people with unknown asthma episode status (about 0.1% of respondents each year). • See [Technical Notes](#) for more details.

Figure 15.2. Percentage of persons of all ages who experienced an asthma episode in the past 12 months, by age group and sex: United States, January–September 2012

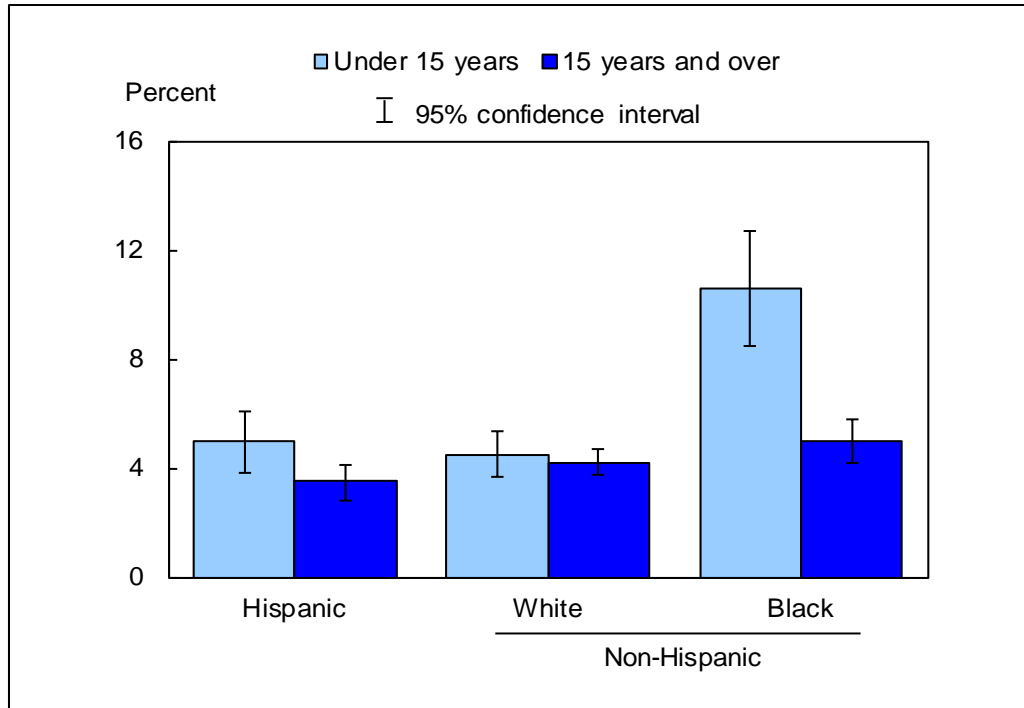


DATA SOURCE: CDC/NCHS, National Health Interview Survey, January–September 2012, combined Sample Adult and Sample Child Core components.

- For both sexes combined, the percentage of persons who had an asthma episode in the past 12 months was higher among children under age 15 than among persons aged 15–34 and 35 and over.
- For children under age 15, the percentage who had an asthma episode in the past 12 months was higher among boys (6.7%) than girls (4.2%). For persons of all ages, and for the age groups 15–34 and 35 and over, the percentage was higher among females than among males.

NOTES: Data are based on household interviews of a sample of the civilian noninstitutionalized population. • Information on an episode of asthma or asthma attack during the past 12 months is self-reported by adults aged 18 and over. For children under age 18, the information is collected from an adult family member, usually a parent, who is knowledgeable about the child's health. • The analyses excluded the 0.1% of persons with unknown asthma episode status. • See [Technical Notes](#) for more details.

Figure 15.3. Sex-adjusted percentage of persons of all ages who experienced an asthma episode in the past 12 months, by age group and race/ethnicity: United States, January–September 2012

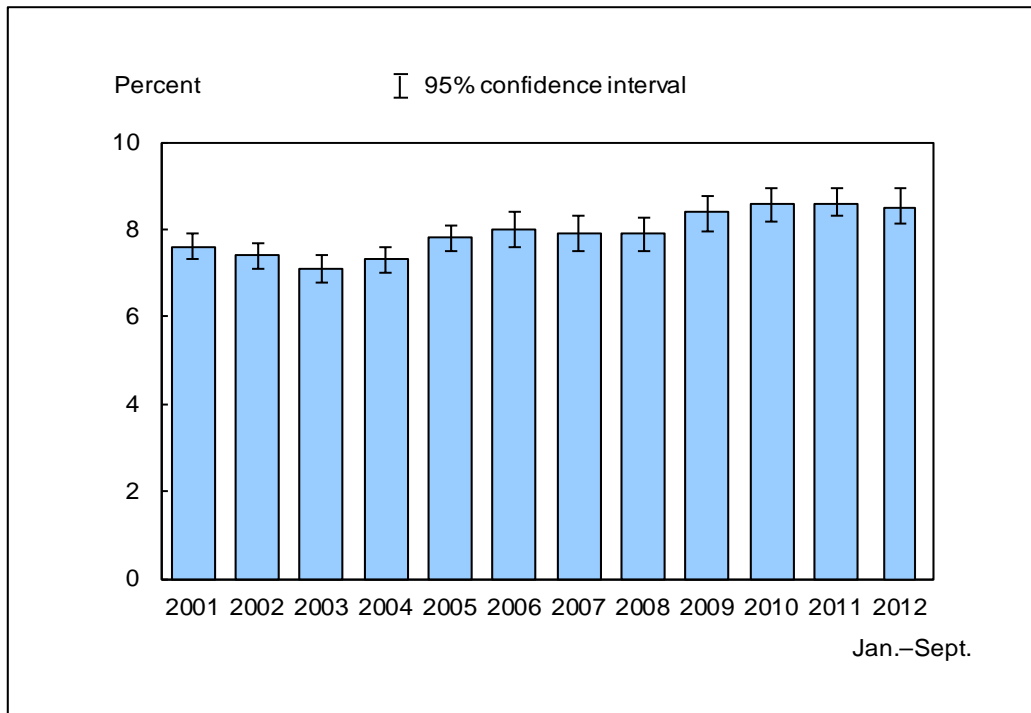


DATA SOURCE: CDC/NCHS, National Health Interview Survey, January–September 2012, combined Sample Adult and Sample Child Core components.

- For children under age 15, the sex-adjusted percentages who had an asthma episode in the past 12 months were 5.0% for Hispanic children, 4.5% for non-Hispanic white children, and 10.6% for non-Hispanic black children.
- For persons aged 15 and over, the sex-adjusted percentages who had an asthma episode in the past 12 months were 3.5% for Hispanic persons, 4.2% for non-Hispanic white persons, and 5.0% for non-Hispanic black persons.
- After adjustment for sex, non-Hispanic black children under age 15 had the highest percentage of having an asthma episode in the past 12 months compared with the other race/ethnicity and age groups.

NOTES: Data are based on household interviews of a sample of the civilian noninstitutionalized population. • Information on an episode of asthma or asthma attack during the past 12 months is self-reported by adults aged 18 years and over. For children under age 18, the information is collected from an adult family member, usually a parent, who is knowledgeable about the child's health. • The analyses excluded the 0.1% of persons with unknown asthma episode status. • Additional estimates of asthma episodes in the past 12 months among persons with current asthma are provided in the Data table for Figure 15.3. • See [Technical Notes](#) for more details.

Figure 15.4. Prevalence of current asthma among persons of all ages: United States, 2001–September 2012

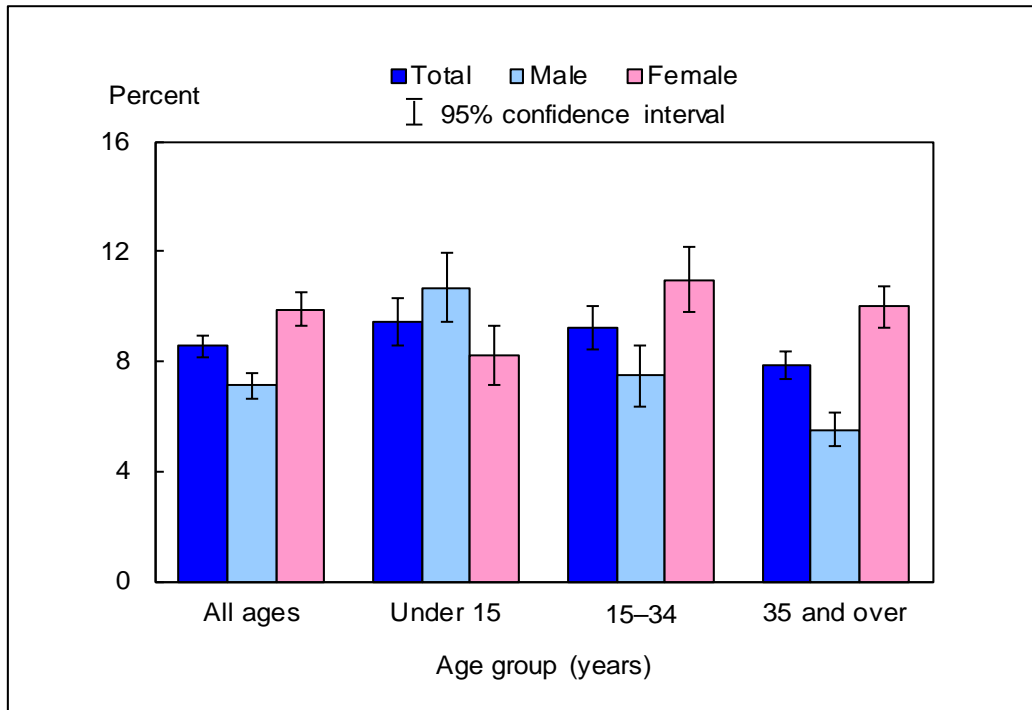


DATA SOURCE: CDC/NCHS, National Health Interview Survey, 2001–September 2012, combined Sample Adult and Sample Child Core components.

- For January–September 2012, 8.5% (95% confidence interval = 8.15%–8.94%) of persons of all ages currently had asthma. This was not significantly different from the 2011 estimate of 8.6%.
- The percentage of current asthma among persons of all ages generally increased from 7.1% in 2003 to 8.6% in 2010 and 2011.

NOTES: Data are based on household interviews of a sample of the civilian noninstitutionalized population. • Beginning in 2001, respondents were asked about current asthma in addition to the question regarding asthma episodes. Information on current asthma is self-reported by adults aged 18 and over. For children under age 18, the information is collected from an adult family member, usually a parent, who is knowledgeable about the child's health. • The analyses excluded people with unknown current asthma status (about 0.2% of respondents each year). • See [Technical Notes](#) for more details.

Figure 15.5. Prevalence of current asthma among persons of all ages, by age group and sex: United States, January–September 2012

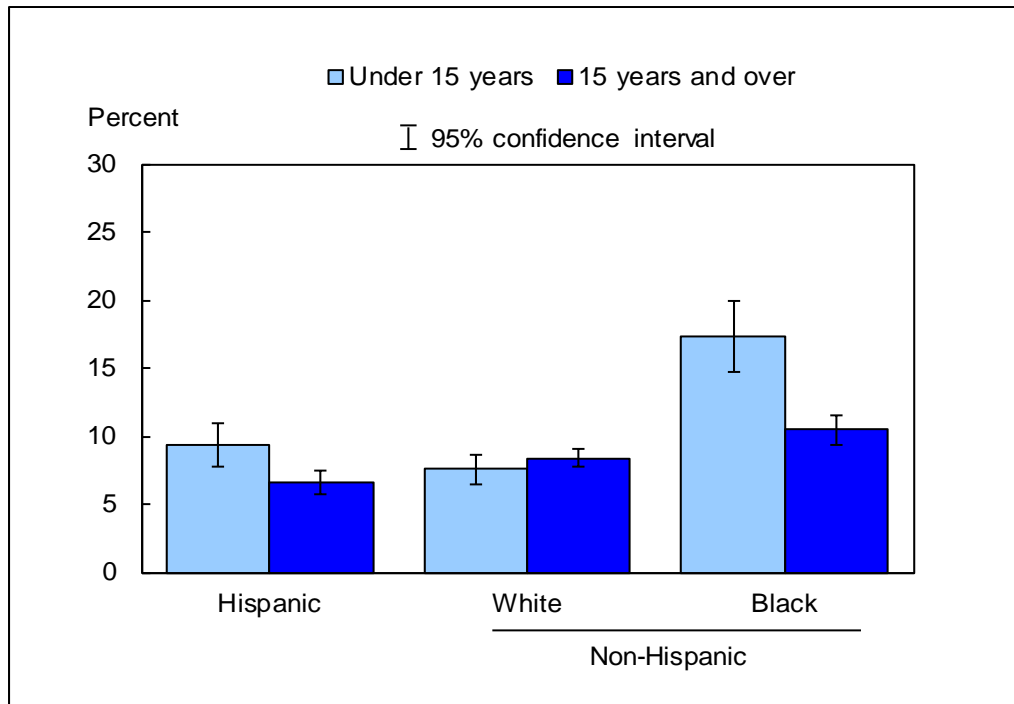


DATA SOURCE: CDC/NCHS, National Health Interview Survey, January–September 2012, combined Sample Adult and Sample Child Core components.

- Persons aged 35 and over were less likely to currently have asthma compared with persons under age 15 and those aged 15–34.
- For persons of all ages, and for persons aged 15–34 and 35 and over, the prevalence of current asthma was higher among females than among males. For persons under age 15, the prevalence of current asthma was higher among males than females.

NOTES: Data are based on household interviews of a sample of the civilian noninstitutionalized population. • Information on current asthma is self-reported by adults aged 18 and over. For children under age 18, the information is collected from an adult family member, usually a parent, who is knowledgeable about the child's health. • The analyses excluded the 0.2% of persons with unknown current asthma status. • See [Technical Notes](#) for more details.

Figure 15.6. Sex-adjusted prevalence of current asthma among persons of all ages, by age group and race/ethnicity: United States, January–September 2012



DATA SOURCE: CDC/NCHS, National Health Interview Survey, January–September 2012, combined Sample Adult and Sample Child Core components.

- For children under age 15, the sex-adjusted prevalence of current asthma was higher among non-Hispanic black children (17.3%) than among Hispanic children (9.3%) and non-Hispanic white children (7.5%).
- For persons aged 15 and over, the sex-adjusted prevalence of current asthma was lowest among Hispanic persons (6.6%), followed by non-Hispanic white persons (8.4%) and non-Hispanic black persons (10.5%).

NOTES: Data are based on household interviews of a sample of the civilian noninstitutionalized population. • Information on current asthma is self-reported by adults aged 18 and over. For children under age 18, the information is collected from an adult family member, usually a parent, who is knowledgeable about the child's health. • The analyses excluded the 0.2% of persons with unknown current asthma status. • See [Technical Notes](#) for more details.

Data tables for Figures 15.1–15.6:

Data table for Figure 15.1. Percentage of persons of all ages who experienced an asthma episode in the past 12 months: United States, 1997–September 2012

Year	Crude ¹ percent (95% confidence interval)	Age-adjusted ² percent (95% confidence interval)
1997	4.2 (4.0-4.4)	4.2 (3.9-4.4)
1998	4.0 (3.7-4.2)	3.9 (3.7-4.2)
1999	3.9 (3.6-4.1)	3.9 (3.6-4.1)
2000	4.0 (3.8-4.2)	4.0 (3.8-4.2)
2001	4.3 (4.1-4.6)	4.3 (4.1-4.5)
2002	4.3 (4.0-4.5)	4.3 (4.0-4.5)
2003	3.9 (3.7-4.1)	3.9 (3.7-4.1)
2004	4.1 (3.8-4.3)	4.1 (3.8-4.3)
2005	4.2 (3.99-4.43)	4.2 (4.00-4.44)
2006	4.2 (3.96-4.52)	4.3 (3.98-4.54)
2007	4.2 (3.87-4.46)	4.2 (3.88-4.47)
2008	4.2 (3.91-4.48)	4.2 (3.93-4.50)
2009	4.2 (3.97-4.52)	4.3 (3.99-4.54)
2010	4.5 (4.24-4.77)	4.5 (4.25-4.78)
2011	4.3 (4.06-4.52)	4.3 (4.08-4.54)
Jan.–Sept. 2012	4.4 (4.13-4.69)	4.4 (4.15-4.71)

¹Crude estimates are presented in the figure.

²Estimates are age adjusted using the projected 2000 U.S. population as the standard population and using three age groups: 0–14, 15–34, and 35 and over.

NOTES: Data are based on household interviews of a sample of the civilian noninstitutionalized population. Beginning with the 2012 data, the National Health Interview Survey transitioned to weights derived from the 2010 census. For 2003–2011 data, weights were derived from the 2000 census. In this Early Release, estimates for 2000–2002 were recalculated using weights derived from the 2000 census. For 1997–1999 data, weights were derived from the 1990 census. See [Technical Notes](#) for more details.

DATA SOURCE: CDC/NCHS, National Health Interview Survey, 1997–September 2012, combined Sample Adult and Sample Child Core components.

Data table for Figure 15.2. Percentage of persons of all ages who experienced an asthma episode in the past 12 months, by age group and sex: United States, January–September 2012

Age (years) and sex	Percent	95% confidence interval
Under 15, total	5.5	4.81-6.18
Under 15, male	6.7	5.62-7.78
Under 15, female	4.2	3.45-5.02
15-34, total	4.2	3.65-4.74
15-34, male	3.2	2.40-3.96
15-34, female	5.2	4.40-6.01
35 and over, total	4.1	3.74-4.49
35 and over, male	2.7	2.15-3.18
35 and over, female	5.4	4.86-5.99
All ages (crude ¹), total	4.4	4.13-4.69
All ages (crude ¹), male	3.6	3.27-4.02
All ages (crude ¹), female	5.1	4.72-5.57
All ages (age-adjusted ²), total	4.4	4.15-4.71
All ages (age-adjusted ²), male	3.7	3.30-4.05
All ages (age-adjusted ²), female	5.1	4.69-5.53

¹Crude estimates are presented in the figure.

²Estimates are age adjusted using the projected 2000 U.S. population as the standard population and using three age groups: 0–14, 15–34, and 35 and over.

NOTE: Data are based on household interviews of a sample of the civilian noninstitutionalized population.

DATA SOURCE: CDC/NCHS, National Health Interview Survey, January–September 2012, combined Sample Adult and Sample Child Core components.



Data table for Figure 15.3. Sex-adjusted percentage of persons who experienced an asthma episode in the past 12 months, among all persons and among persons with current asthma, by age group and race/ethnicity: United States, January–September 2012

Age (years) and race/ethnicity	Percent¹ among all persons (95% confidence interval)	Percent¹ among persons with current asthma (95% confidence interval)
Under 15, Hispanic or Latino	5.0 (3.84-6.08)	50.2 (41.53-58.93)
Under 15, not Hispanic or Latino, single race, white	4.5 (3.65-5.35)	59.4 (51.73-67.02)
Under 15, not Hispanic or Latino, single race, black	10.6 (8.47-12.67)	60.6 (53.04-68.15)
15 and over, Hispanic or Latino	3.5 (2.83-4.08)	52.0 (45.48-58.48)
15 and over, not Hispanic or Latino, single race, white	4.2 (3.77-4.68)	49.5 (45.48-53.44)
15 and over, not Hispanic or Latino, single race, black	5.0 (4.21-5.81)	47.0 (41.22-52.82)

¹Estimates for all persons are presented in the figure. Estimates are sex adjusted using the projected 2000 U.S. population as the standard population.

NOTE: Data are based on household interviews of a sample of the civilian noninstitutionalized population.

DATA SOURCE: CDC/NCHS, National Health Interview Survey, January–September 2012, combined Sample Adult and Sample Child Core components.

**Data table for Figure 15.4. Prevalence of current asthma among persons of all ages:
United States, 2001–September 2012**

Year	Crude ¹ percent (95% confidence interval)	Age-adjusted ² percent (95% confidence interval)
2001	7.6 (7.3-7.9)	7.6 (7.3-7.9)
2002	7.4 (7.1-7.7)	7.4 (7.1-7.7)
2003	7.1 (6.8-7.4)	7.1 (6.8-7.4)
2004	7.3 (7.0-7.6)	7.3 (7.1-7.7)
2005	7.8 (7.50-8.10)	7.8 (7.51-8.11)
2006	8.0 (7.61-8.41)	8.0 (7.62-8.43)
2007	7.9 (7.50-8.31)	7.9 (7.51-8.33)
2008	7.9 (7.48-8.27)	7.9 (7.51-8.30)
2009	8.4 (7.97-8.76)	8.4 (7.99-8.78)
2010	8.6 (8.19-8.94)	8.6 (8.20-8.95)
2011	8.6 (8.31-8.93)	8.6 (8.32-8.95)
Jan.–Sept. 2012	8.5 (8.15-8.94)	8.6 (8.18-8.97)

¹Crude estimates are presented in the figure.

²Estimates are age adjusted using the projected 2000 U.S. population as the standard population and using three age groups: 0–14, 15–34, and 35 and over.

NOTES: Data are based on household interviews of a sample of the civilian noninstitutionalized population. Beginning with the 2012 data, the National Health Interview Survey transitioned to weights derived from the 2010 census. For 2003–2011 data, weights were derived from the 2000 census. In this Early Release, estimates for 2000–2002 were recalculated using weights derived from the 2000 census. For 1997–1999 data, weights were derived from the 1990 census. See [Technical Notes](#) for more details.

DATA SOURCE: CDC/NCHS, National Health Interview Survey, 2001–September 2012, combined Sample Adult and Sample Child Core components.

Data table for Figure 15.5. Prevalence of current asthma among persons of all ages, by age group and sex: United States, January–September 2012

Age (years) and sex	Percent	95% confidence interval
Under 15, total	9.5	8.58-10.32
Under 15, male	10.7	9.40-11.93
Under 15, female	8.2	7.12-9.26
15-34, total	9.2	8.42-10.01
15-34, male	7.5	6.36-8.57
15-34, female	11.0	9.80-12.13
35 and over, total	7.9	7.36-8.36
35 and over, male	5.5	4.89-6.14
35 and over, female	10.0	9.21-10.74
All ages (crude ¹), total	8.5	8.15-8.94
All ages (crude ¹), male	7.1	6.65-7.60
All ages (crude ¹), female	9.9	9.28-10.51
All ages (age-adjusted ²), total	8.6	8.18-8.97
All ages (age-adjusted ²), male	7.2	6.69-7.63
All ages (age-adjusted ²), female	9.9	9.25-10.48

¹Crude estimates are presented in the figure.

²Estimates are age adjusted using the projected 2000 U.S. population as the standard population and using three age groups: 0–14, 15–34, and 35 and over.

NOTE: Data are based on household interviews of a sample of the civilian noninstitutionalized population.

DATA SOURCE: CDC/NCHS, National Health Interview Survey, January–September 2012, combined Sample Adult and Sample Child Core components.

Data table for Figure 15.6. Sex-adjusted prevalence of current asthma among persons of all ages, by age group and race/ethnicity: United States, January–September 2012

Age (years) and race/ethnicity	Percent ¹	95% confidence interval
Under 15, Hispanic or Latino	9.3	7.71-10.92
Under 15, not Hispanic or Latino, single race, white	7.5	6.50-8.59
Under 15, not Hispanic or Latino, single race, black	17.3	14.72-19.95
15 and over, Hispanic or Latino	6.6	5.74-7.47
15 and over, not Hispanic or Latino, single race, white	8.4	7.81-8.99
15 and over, not Hispanic or Latino, single race, black	10.5	9.34-11.59

¹Estimates are sex adjusted using the projected 2000 U.S. population as the standard population.

NOTE: Data are based on household interviews of a sample of the civilian noninstitutionalized population.

DATA SOURCE: CDC/NCHS, National Health Interview Survey, January–September 2012, combined Sample Adult and Sample Child Core components.