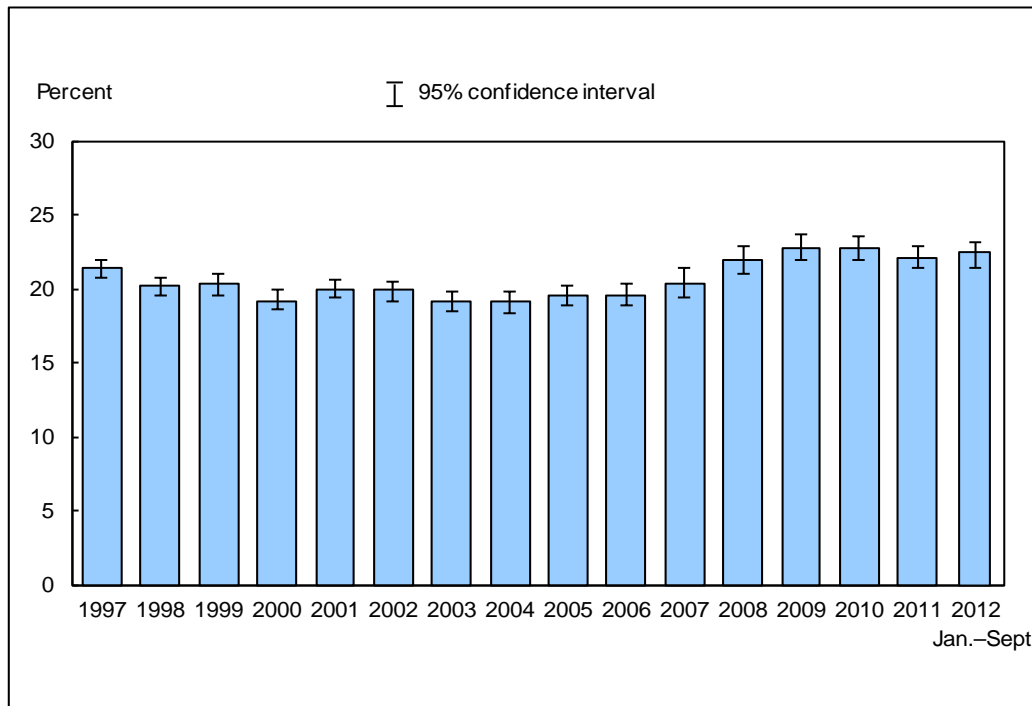


Figure 9.1. Percentage of adults aged 18 and over who had five or more drinks in 1 day at least once in the past year: United States, 1997–September 2012

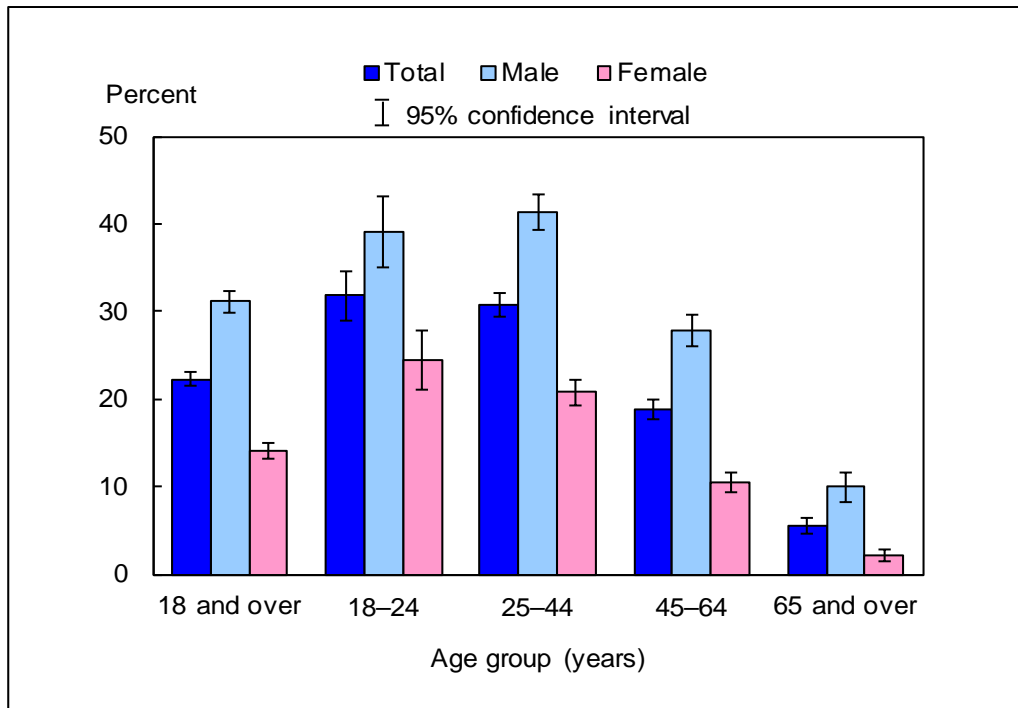


DATA SOURCE: CDC/NCHS, National Health Interview Survey, 1997–September 2012, Sample Adult Core component.

- For January–September 2012, the percentage of adults who had five or more drinks in 1 day at least once in the past year was 22.3% (95% confidence interval = 21.43%–23.11%), which was not significantly different from the 2011 estimate of 22.1%.
- The percentage of adults who had five or more drinks in 1 day at least once in the past year decreased from 21.4% in 1997 to 19.1% in 2004, and then increased to 22.8% in 2009.

NOTES: Data are based on household interviews of a sample of the civilian noninstitutionalized population. • The analyses excluded adults with unknown alcohol consumption (about 2% of respondents each year). • See [Technical Notes](#) for more details.

Figure 9.2. Percentage of adults aged 18 and over who had five or more drinks in 1 day at least once in the past year, by age group and sex: United States, January–September 2012

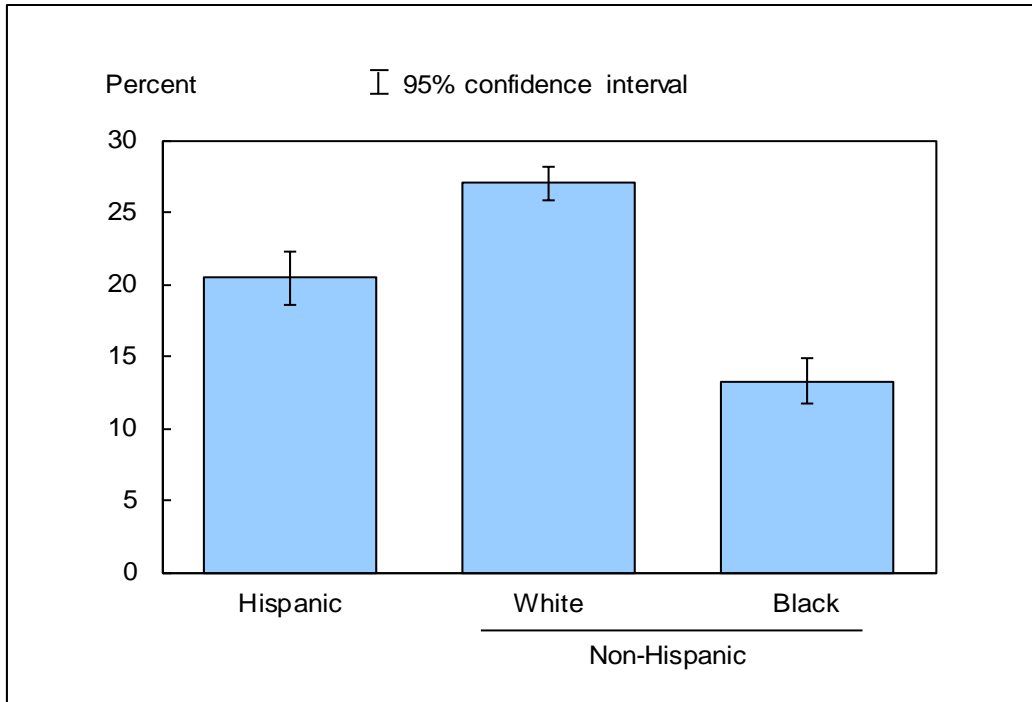


DATA SOURCE: CDC/NCHS, National Health Interview Survey, January–September 2012, Sample Adult Core component.

- Among adults aged 25 and over, the percentages of women and men who had five or more drinks in 1 day at least once in the past year decreased with age.
- For adults aged 18 and over, and for adults aged 18–24, 25–44, 45–64, and 65 and over, men were considerably more likely than women to have had five or more drinks in 1 day at least once in the past year.

NOTES: Data are based on household interviews of a sample of the civilian noninstitutionalized population. • The analyses excluded the 1.0% of adults with unknown alcohol consumption. • See [Technical Notes](#) for more details.

Figure 9.3. Age-sex-adjusted percentage of adults aged 18 and over who had five or more drinks in 1 day at least once in the past year, by race/ethnicity: United States, January–September 2012



DATA SOURCE: CDC/NCHS, National Health Interview Survey, January–September 2012, Sample Adult Core component.

- The age-sex-adjusted percentage of adults who had five or more drinks in 1 day at least once in the past year was 20.4% for Hispanic adults, 27.0% for non-Hispanic white adults, and 13.3% for non-Hispanic black adults.
- Non-Hispanic white adults were the most likely to have had five or more drinks in 1 day at least once in the past year, followed by Hispanic adults and non-Hispanic black adults.

NOTES: Data are based on household interviews of a sample of the civilian noninstitutionalized population. • The analyses excluded the 1.0% of adults with unknown alcohol consumption. • Estimates are age-sex adjusted using the projected 2000 U.S. population as the standard population and using four age groups: 18–24, 25–44, 45–64, and 65 and over. • See [Technical Notes](#) for more details.

Data tables for Figures 9.1–9.3:

Data table for Figure 9.1. Percentage of adults aged 18 and over who had five or more drinks in 1 day at least once in the past year: United States, 1997–September 2012

Year	Crude ¹ percent (95% confidence interval)	Age-adjusted ² percent (95% confidence interval)
1997	21.4 (20.8-22.0)	21.1 (20.5-21.6)
1998	20.2 (19.6-20.8)	19.9 (19.3-20.5)
1999	20.3 (19.6-21.0)	20.1 (19.5-20.7)
2000	19.2 (18.6-19.9)	19.2 (18.6-19.8)
2001	20.0 (19.4-20.6)	20.0 (19.4-20.6)
2002	19.9 (19.2-20.5)	20.0 (19.4-20.6)
2003	19.1 (18.5-19.8)	19.2 (18.6-19.9)
2004	19.1 (18.4-19.8)	19.2 (18.6-19.9)
2005	19.5 (18.89-20.18)	19.8 (19.20-20.49)
2006	19.6 (18.86-20.39)	19.9 (19.19-20.68)
2007	20.4 (19.44-21.34)	20.7 (19.79-21.68)
2008	22.0 (21.00-22.93)	22.4 (21.47-23.38)
2009	22.8 (21.87-23.67)	23.3 (22.41-24.21)
2010	22.7 (21.99-23.51)	23.4 (22.61-24.13)
2011	22.1 (21.34-22.87)	22.8 (22.07-23.58)
Jan.–Sept. 2012	22.3 (21.43-23.11)	23.1 (22.23-23.92)

¹Crude estimates are presented in the figure.

²Estimates are age adjusted using the projected 2000 U.S. population as the standard population and using four age groups: 18–24, 25–44, 45–64, and 65 and over.

NOTES: Data are based on household interviews of a sample of the civilian noninstitutionalized population. Beginning with the 2012 data, the National Health Interview Survey transitioned to weights derived from the 2010 census. For 2003–2011 data, weights were derived from the 2000 census. In this Early Release, estimates for 2000–2002 were recalculated using weights derived from the 2000 census. For 1997–1999 data, weights were derived from the 1990 census. See [Technical Notes](#) for more details.

DATA SOURCE: CDC/NCHS, National Health Interview Survey, 1997–September 2012, Sample Adult Core component.

Data table for Figure 9.2. Percentage of adults aged 18 and over who had five or more drinks in 1 day at least once in the past year, by age group and sex: United States, January–September 2012

Age (years) and sex	Percent	95% confidence interval
18-24, total	31.8	28.92-34.65
18-24, male	39.1	35.13-43.08
18-24, female	24.4	21.03-27.86
25-44, total	30.8	29.48-32.19
25-44, male	41.3	39.22-43.37
25-44, female	20.8	19.28-22.24
45-64, total	18.8	17.75-19.95
45-64, male	27.8	25.97-29.68
45-64, female	10.5	9.42-11.53
65 and over, total	5.6	4.69-6.51
65 and over, male	10.0	8.28-11.71
65 and over, female	2.2	1.50-2.84
18 and over (crude ¹), total	22.3	21.43-23.11
18 and over (crude ¹), male	31.2	29.94-32.41
18 and over (crude ¹), female	14.1	13.16-14.97
18 and over (age-adjusted ²), total	23.1	22.23-23.92
18 and over (age-adjusted ²), male	31.7	30.40-32.90
18 and over (age-adjusted ²), female	15.0	14.06-15.93

¹Crude estimates are presented in the figure.

²Estimates are age adjusted using the projected 2000 U.S. population as the standard population and using four age groups: 18–24, 25–44, 45–64, and 65 and over.

NOTE: Data are based on household interviews of a sample of the civilian noninstitutionalized population.

DATA SOURCE: CDC/NCHS, National Health Interview Survey, January–September 2012, Sample Adult Core component.

Data table for Figure 9.3. Age-sex-adjusted percentage of adults aged 18 and over who had five or more drinks in 1 day at least once in the past year, by race/ethnicity: United States, January–September 2012

Race/ethnicity	Percent ¹	95% confidence interval
Hispanic or Latino	20.4	18.56-22.26
Not Hispanic or Latino, single race, white	27.0	25.88-28.13
Not Hispanic or Latino, single race, black	13.3	11.70-14.83

¹Estimates are age-sex adjusted using the projected 2000 U.S. population as the standard population and using four age groups: 18–24, 25–44, 45–64, and 65 and over.

NOTE: Data are based on household interviews of a sample of the civilian noninstitutionalized population.

DATA SOURCE: CDC/NCHS, National Health Interview Survey, January–September 2012, Sample Adult Core component.