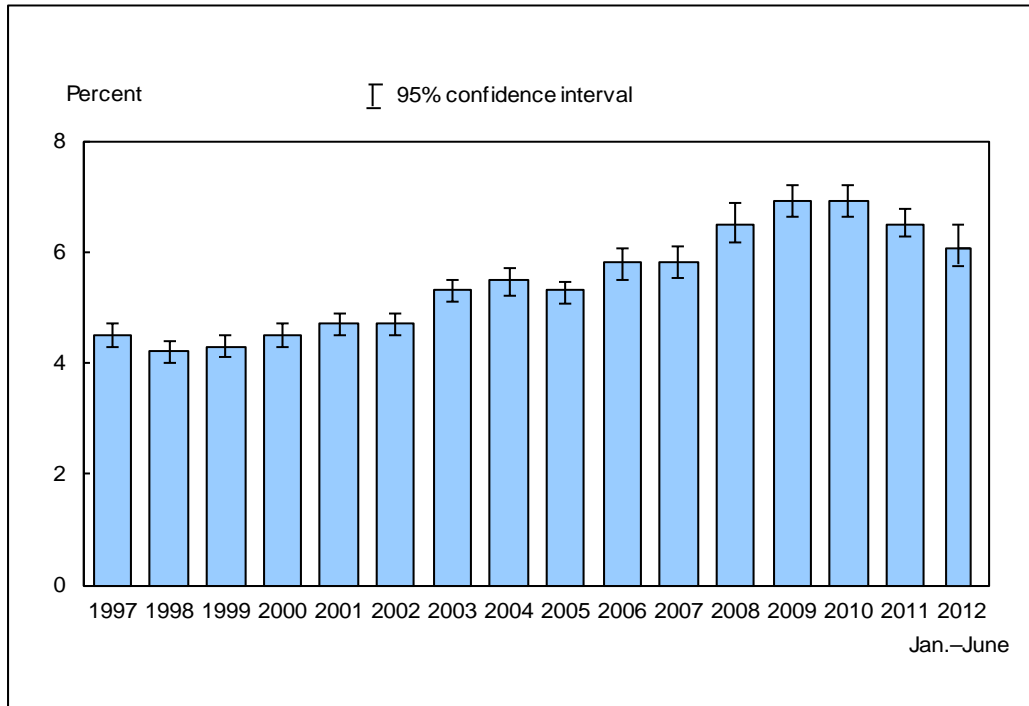


Figure 3.1. Percentage of persons of all ages who failed to obtain needed medical care due to cost at some time during the past 12 months: United States, 1997–June 2012

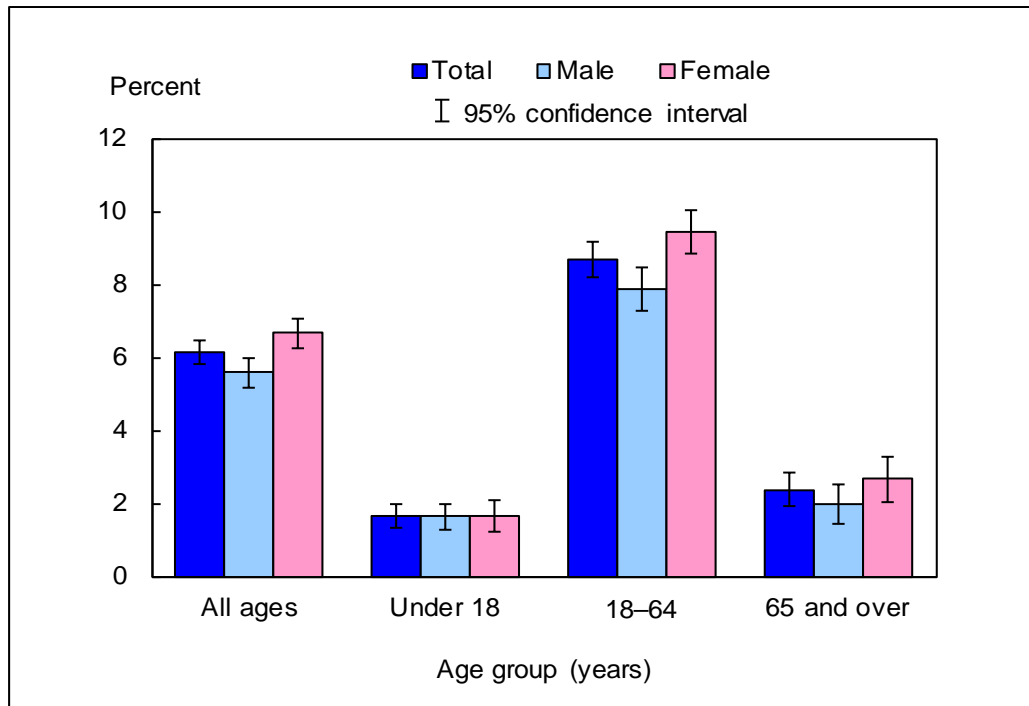


DATA SOURCE: CDC/NCHS, National Health Interview Survey, 1997–June 2012, Family Core component.

- For January–June 2012, 6.1% (95% confidence interval = 5.79%–6.48%) of the population failed to obtain needed medical care due to cost at some time during the past 12 months, which was not significantly different from the 2011 estimate of 6.5%.
- There was a generally increasing trend in the percentage of persons who failed to obtain needed medical care due to cost, from 4.3% in 1999 to 6.9% in 2009 and 2010.

NOTES: Data are based on household interviews of a sample of the civilian noninstitutionalized population. • The analyses excluded persons with unknown responses to the question on failure to obtain needed medical care due to cost (about 0.2% of respondents each year). • See [Technical Notes](#) for more details.

Figure 3.2. Percentage of persons of all ages who failed to obtain needed medical care due to cost at some time during the past 12 months, by age group and sex: United States, January–June 2012

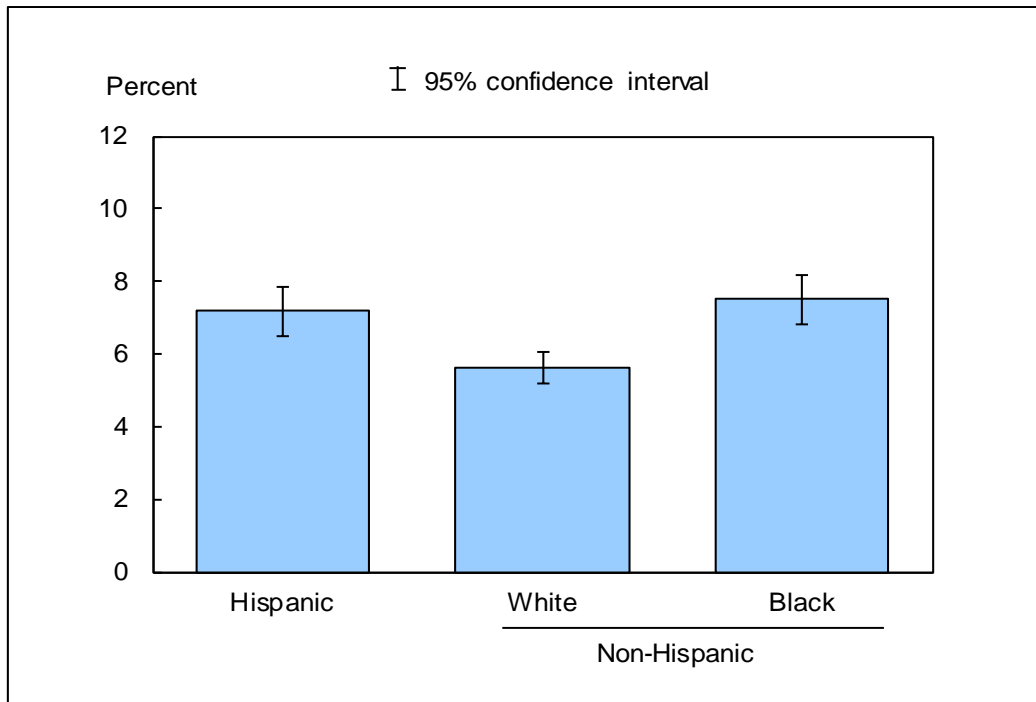


DATA SOURCE: CDC/NCHS, National Health Interview Survey, January–June 2012, Family Core component.

- For both sexes combined, the percentage of persons who failed to obtain needed medical care due to cost at some time during the past 12 months was 1.6% for those under age 18, 8.7% for those aged 18–64, and 2.4% for those aged 65 and over.
- For persons of all ages combined, and for adults aged 18–64, females were more likely than males to have failed to obtain needed medical care due to cost during the past 12 months.

NOTES: Data are based on household interviews of a sample of the civilian noninstitutionalized population. • The analyses excluded the 0.1% persons with unknown responses to the question on failure to obtain needed medical care due to cost. • See [Technical Notes](#) for more details.

Figure 3.3. Age-sex-adjusted percentage of persons of all ages who failed to obtain needed medical care due to cost at some time during the past 12 months, by race/ethnicity: United States, January–June 2012



DATA SOURCE: CDC/NCHS, National Health Interview Survey, January–June 2012, Family Core component.

- After adjustment for age and sex, 7.2% of Hispanic persons, 5.6% of non-Hispanic white persons, and 7.5% of non-Hispanic black persons failed to obtain needed medical care due to cost at some time during the year preceding the interview.
- Hispanic persons and non-Hispanic black persons were more likely than non-Hispanic white persons to have failed to obtain needed medical care due to cost.

NOTES: Data are based on household interviews of a sample of the civilian noninstitutionalized population. • The analyses excluded the 0.1% of persons with unknown responses to the question on failure to obtain needed medical care due to cost. • Estimates are age-sex adjusted using the projected 2000 U.S. population as the standard population and using three age groups: under 18, 18–64, and 65 and over. • See [Technical Notes](#) for more details.

Data tables for Figures 3.1–3.3:

Data table for Figure 3.1. Percentage of persons of all ages who failed to obtain needed medical care due to cost at some time during the past 12 months: United States, 1997–June 2012

Year	Crude ¹ percent (95% confidence interval)	Age-adjusted ² percent (95% confidence interval)
1997	4.5 (4.3-4.7)	4.5 (4.4-4.7)
1998	4.2 (4.0-4.4)	4.2 (4.0-4.4)
1999	4.3 (4.1-4.5)	4.3 (4.1-4.5)
2000	4.5 (4.3-4.7)	4.5 (4.2-4.7)
2001	4.7 (4.5-4.9)	4.7 (4.5-4.9)
2002	4.7 (4.5-4.9)	4.7 (4.5-4.9)
2003	5.3 (5.1-5.5)	5.2 (5.0-5.5)
2004	5.5 (5.2-5.7)	5.4 (5.2-5.6)
2005	5.3 (5.05-5.45)	5.2 (4.99-5.40)
2006	5.8 (5.49-6.07)	5.7 (5.42-6.00)
2007	5.8 (5.54-6.11)	5.8 (5.47-6.03)
2008	6.5 (6.17-6.87)	6.4 (6.09-6.78)
2009	6.9 (6.62-7.21)	6.8 (6.54-7.12)
2010	6.9 (6.64-7.20)	6.8 (6.56-7.10)
2011	6.5 (6.26-6.77)	6.4 (6.18-6.68)
January-June 2012	6.1 (5.79-6.48)	6.1 (5.73-6.39)

¹Crude estimates are presented in the figure.

²Estimates are age adjusted using the projected 2000 U.S. population as the standard population and using three age groups: under 18, 18–64, and 65 and over.

NOTES: Data are based on household interviews of a sample of the civilian noninstitutionalized population. Beginning with the 2003 data, the National Health Interview Survey transitioned to weights derived from the 2000 census. In this Early Release, estimates for 2000–2002 were recalculated using weights derived from the 2000 census. See [Technical Notes](#) for more details.

DATA SOURCE: CDC/NCHS, National Health Interview Survey, 1997–June 2012, Family Core component.

Data table for Figure 3.2. Percentage of persons of all ages who failed to obtain needed medical care due to cost at some time during the past 12 months, by age group and sex: United States, January–June 2012

Age (years) and sex	Percent	95% confidence interval
Under 18, total	1.6	1.34-1.95
Under 18, male	1.6	1.25-2.00
Under 18, female	1.7	1.23-2.08
18-64, total	8.7	8.17-9.16
18-64, male	7.8	7.26-8.44
18-64, female	9.4	8.86-10.04
65 and over, total	2.4	1.90-2.83
65 and over, male	2.0	1.44-2.54
65 and over, female	2.7	2.04-3.27
All ages (crude ¹), total	6.1	5.79-6.48
All ages (crude ¹), male	5.6	5.18-5.98
All ages (crude ¹), female	6.7	6.26-7.08
All ages (age-adjusted ²), total	6.1	5.73-6.39
All ages (age-adjusted ²), male	5.5	5.12-5.89
All ages (age-adjusted ²), female	6.6	6.19-6.97

¹Crude estimates are presented in the figure.

²Estimates are age adjusted using the projected 2000 U.S. population as the standard population and using three age groups: under 18, 18–64, and 65 and over.

NOTE: Data are based on household interviews of a sample of the civilian noninstitutionalized population.

DATA SOURCE: CDC/NCHS, National Health Interview Survey, January–June 2012, Family Core component.

Data table for Figure 3.3. Age-sex-adjusted percentage of persons of all ages who failed to obtain needed medical care due to cost at some time during the past 12 months, by race/ethnicity: United States, January–June 2012

Race/ethnicity	Percent ¹	95% confidence interval
Hispanic or Latino	7.2	6.50-7.84
Not Hispanic or Latino, single race, white	5.6	5.17-6.06
Not Hispanic or Latino, single race, black	7.5	6.84-8.17

¹Estimates are age-sex adjusted using the projected 2000 U.S. population as the standard population and using three age groups: under 18, 18–64, and 65 and over.

NOTE: Data are based on household interviews of a sample of the civilian noninstitutionalized population.

DATA SOURCE: CDC/NCHS, National Health Interview Survey, January–June 2012, Family Core component.