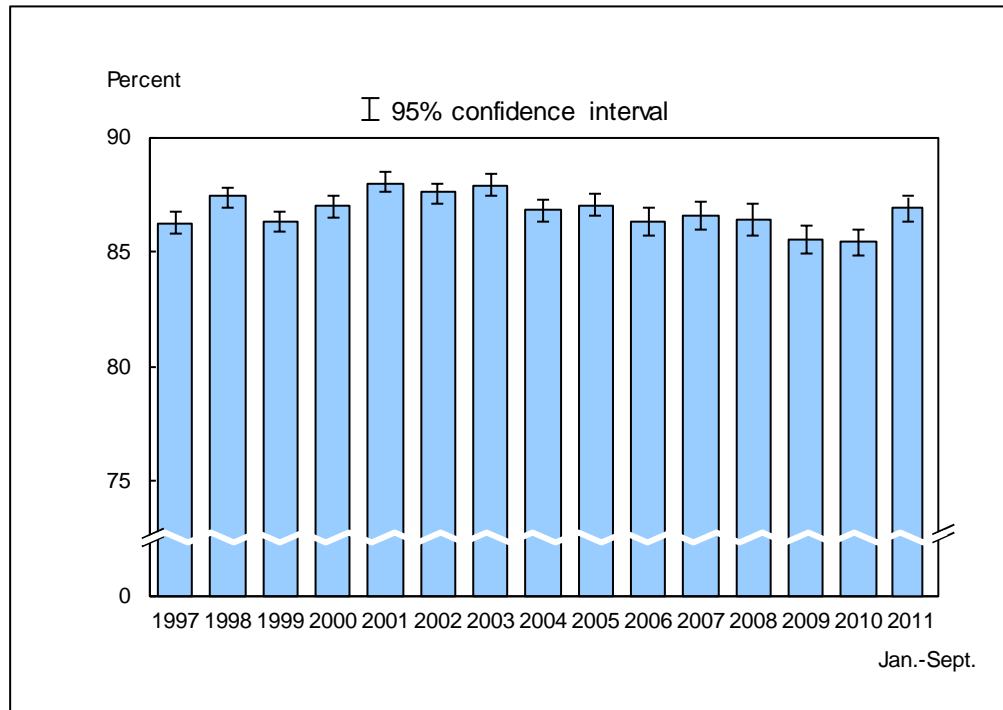


Figure 2.1. Percentage of persons of all ages with a usual place to go for medical care: United States, 1997–September 2011

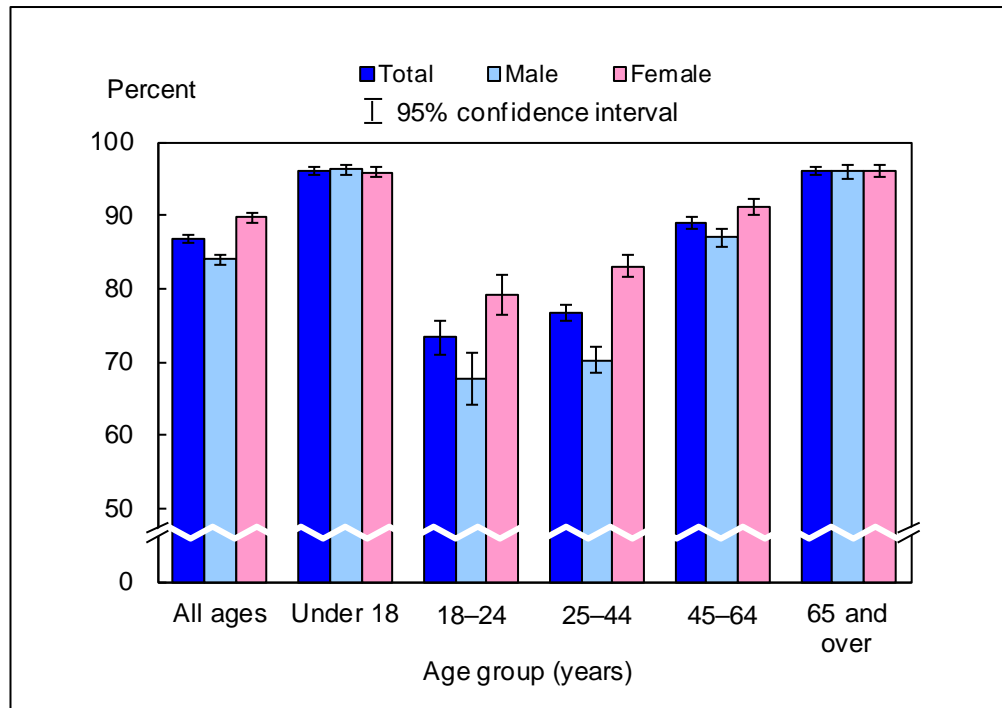


DATA SOURCE: CDC/NCHS, National Health Interview Survey, 1997–September 2011, combined Sample Adult and Sample Child Core components.

- For January–September 2011, the percentage of persons who had a usual place to go for medical care was 86.9% (95% confidence interval = 86.32%–87.40%), which was higher than the 2010 estimate of 85.4%.
- The percentage of persons of all ages who had a usual place to go for medical care generally decreased from 87.9% in 2003 to 85.4% in 2010.

NOTES: Data are based on household interviews of a sample of the civilian noninstitutionalized population. • The usual place to go for medical care does not include a hospital emergency room. • The analyses excluded persons with an unknown usual place to go for medical care (about 1.5% of respondents each year). • See "[Technical Notes](#)" for more details.

Figure 2.2. Percentage of persons of all ages with a usual place to go for medical care, by age group and sex: United States, January–September 2011

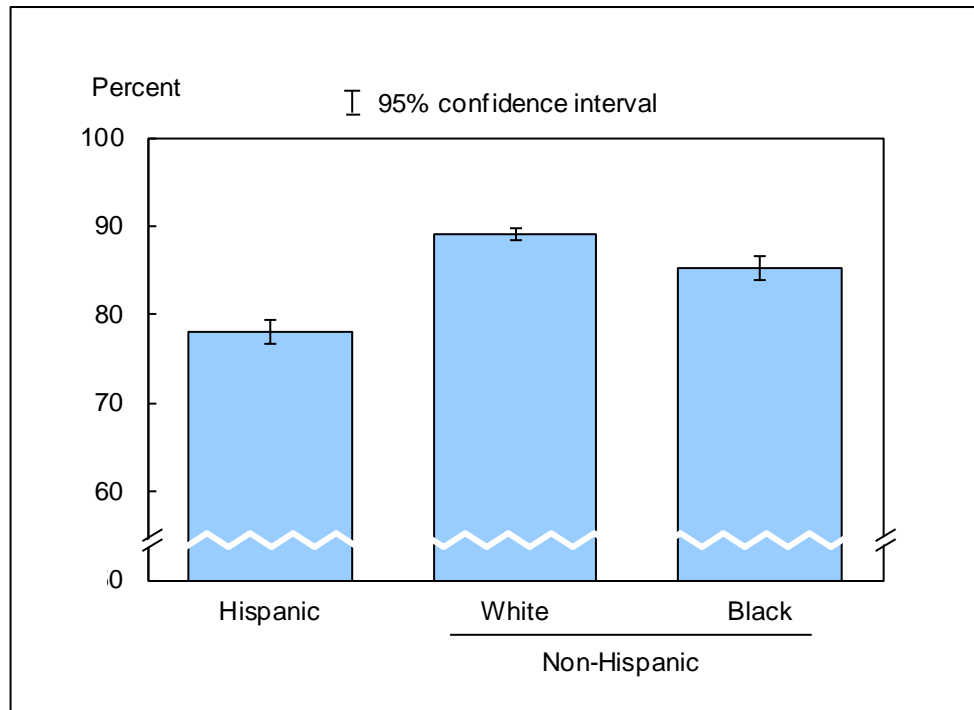


DATA SOURCE: CDC/NCHS, National Health Interview Survey, January–September 2011, combined Sample Adult and Sample Child Core components.

- Persons aged 18–24 were the least likely to have a usual place to go for medical care. Children under age 18 were more likely than adults in age groups 18–24, 25–44, and 45–64 to have a usual place to go for medical care.
- Among those aged 18 and over, the percentage of persons having a usual place to go for medical care increased with age.
- For adults aged 18–24, 25–44, and 45–64, women were more likely than men to have a usual place to go for medical care.

NOTES: Data are based on household interviews of a sample of the civilian noninstitutionalized population. • The usual place to go for medical care does not include a hospital emergency room. • The analyses excluded 0.3% of persons with an unknown usual place to go for medical care. • See "[Technical Notes](#)" for more details.

Figure 2.3. Age-sex-adjusted percentage of persons of all ages with a usual place to go for medical care, by race/ethnicity: United States, January–September 2011



DATA SOURCE: CDC/NCHS, National Health Interview Survey, January–September 2011, combined Sample Adult and Sample Child Core components.

- After adjustment for age and sex, the percentage of persons with a usual place to go for medical care was 78.0% for Hispanic persons, 89.1% for non-Hispanic white persons, and 85.3% for non-Hispanic black persons.
- Of the three race/ethnicity groups, Hispanic persons were the least likely to have a usual place to go for medical care, followed by non-Hispanic black persons and non-Hispanic white persons.

NOTES: Data are based on household interviews of a sample of the civilian noninstitutionalized population. • The usual place to go for medical care does not include a hospital emergency room. • The analyses excluded 0.3% of persons with an unknown usual place to go for medical care. • Estimates are age-sex-adjusted using the projected 2000 U.S. population as the standard population and using five age groups: under 18, 18–24, 25–44, 45–64, and 65 and over. • See "[Technical Notes](#)" for more details.

Data tables for Figures 2.1–2.3:

Data table for Figure 2.1. Percentage of persons of all ages with a usual place to go for medical care: United States, 1997–September 2011

Year	Crude ¹ percent (95% confidence interval)	Age-adjusted ² percent (95% confidence interval)
1997	86.2 (85.8-86.7)	86.3 (85.9-86.7)
1998	87.4 (86.9-87.8)	87.4 (87.0-87.9)
1999	86.3 (85.9-86.7)	86.4 (86.0-86.8)
2000	87.0 (86.5-87.4)	87.0 (86.6-87.4)
2001	88.0 (87.6-88.5)	88.0 (87.6-88.5)
2002	87.6 (87.1-88.0)	87.6 (87.1-88.0)
2003	87.9 (87.4-88.4)	87.9 (87.4-88.4)
2004	86.8 (86.3-87.3)	86.8 (86.3-87.2)
2005	87.0 (86.56-87.50)	86.9 (86.47-87.41)
2006	86.3 (85.68-86.92)	86.2 (85.56-86.80)
2007	86.6 (85.97-87.19)	86.5 (85.84-87.06)
2008	86.4 (85.73-87.09)	86.2 (85.54-86.88)
2009	85.5 (84.91-86.12)	85.3 (84.65-85.90)
2010	85.4 (84.85-85.99)	85.1 (84.55-85.66)
Jan.–Sept. 2011	86.9 (86.32-87.40)	86.6 (86.01-87.10)

¹Crude estimates are presented in the figure.

²Estimates are age adjusted using the projected 2000 U.S. population as the standard population and using five age groups: under 18, 18–24, 25–44, 45–64, and 65 and over.

NOTES: Data are based on household interviews of a sample of the civilian noninstitutionalized population. Beginning with the 2003 data, the National Health Interview Survey transitioned to weights derived from the 2000 census. In this Early Release, estimates for 2000–2002 were recalculated using weights derived from the 2000 census. See "[Technical Notes](#)" for more details.

DATA SOURCE: CDC/NCHS, National Health Interview Survey, 1997–September 2011, combined Sample Adult and Sample Child Core components.

Data table for Figure 2.2. Percentage of persons of all ages with a usual place to go for medical care, by age group and sex: United States, January–September 2011

Age (years) and sex	Percent	95% confidence interval
Under 18, total	96.0	95.55-96.49
Under 18, male	96.2	95.52-96.89
Under 18, female	95.8	95.16-96.49
18-24, total	73.4	71.07-75.71
18-24, male	67.8	64.17-71.36
18-24, female	79.1	76.46-81.80
25-44, total	76.7	75.52-77.87
25-44, male	70.2	68.46-71.99
25-44, female	83.1	81.70-84.47
45-64, total	89.1	88.26-89.86
45-64, male	86.9	85.74-88.12
45-64, female	91.1	90.01-92.15
65 and over, total	96.1	95.44-96.66
65 and over, male	96.0	95.04-96.91
65 and over, female	96.1	95.34-96.88
All ages (crude ¹), total	86.9	86.32-87.40
All ages (crude ¹), male	83.9	83.16-84.70
All ages (crude ¹), female	89.7	89.05-90.31
All ages (age-adjusted ²), total	86.6	86.01-87.10
All ages (age-adjusted ²), male	83.7	82.91-84.40
All ages (age-adjusted ²), female	89.4	88.78-90.05

¹Crude estimates are presented in the figure.

²Estimates are age adjusted using the projected 2000 U.S. population as the standard population and using five age groups: under 18, 18–24, 25–44, 45–64, and 65 and over.

NOTE: Data are based on household interviews of a sample of the civilian noninstitutionalized population.

DATA SOURCE: CDC/NCHS, National Health Interview Survey, January–September 2011, combined Sample Adult and Sample Child Core components.

Data table for Figure 2.3. Age-sex-adjusted percentage of persons of all ages with a usual place to go for medical care, by race/ethnicity: United States, January–September 2011

Race/ethnicity	Age-sex-adjusted¹ percent (95% confidence interval)	Age-adjusted² percent (95% confidence interval)
Hispanic or Latino	78.0 (76.78-79.31)	77.8 (76.51-79.08)
Not Hispanic or Latino, single race, white	89.1 (88.49-89.73)	89.1 (88.50-89.74)
Not Hispanic or Latino, single race, black	85.3 (83.99-86.71)	85.6 (84.24-86.91)

¹Age-sex-adjusted estimates are presented in the figure. Estimates are age-sex-adjusted using the projected 2000 U.S. population as the standard population and using five age groups: under 18, 18–24, 25–44, 45–64, and 65 and over.

²Estimates are age adjusted using the projected 2000 U.S. population as the standard population and using five age groups: under 18, 18–24, 25–44, 45–64, and 65 and over.

NOTE: Data are based on household interviews of a sample of the civilian noninstitutionalized population.

DATA SOURCE: CDC/NCHS, National Health Interview Survey, January–September 2011, combined Sample Adult and Sample Child Core components.