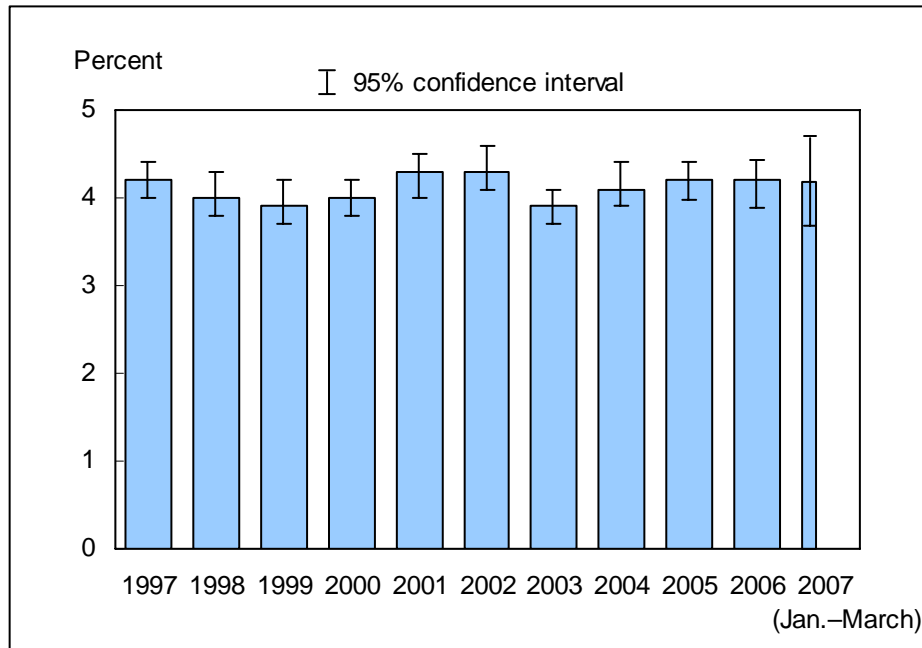


Figure 15.1. Percentage of persons of all ages who experienced an asthma episode in the past 12 months: United States, 1997–March 2007



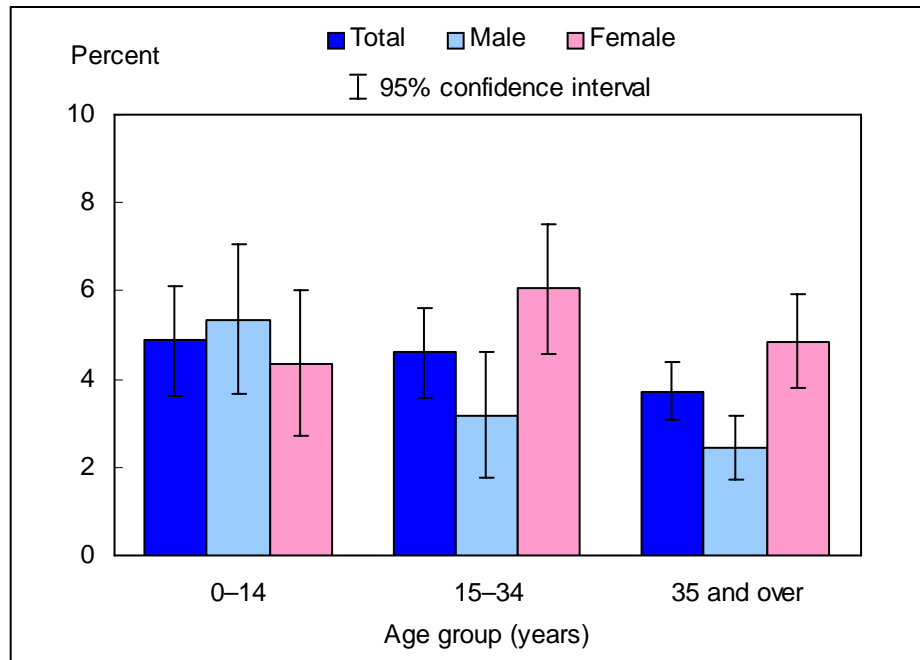
NOTES: Information on an episode of asthma or asthma attack during the past 12 months is self-reported by adults aged 18 years and over. For children under age 18 years, the information is collected from an adult family member, usually a parent, who is knowledgeable about the child's health. The analyses excluded people with unknown asthma episode status (about 0.3% of respondents each year). Beginning with the 2003 data, the National Health Interview Survey (NHIS) transitioned to weights derived from the 2000 census. In this Early Release, estimates for 2000–2002 were recalculated using weights derived from the 2000 census. See "About This Early Release" and Table III in the Appendix for more details.

DATA SOURCE: Combined Sample Adult and Sample Child Core components of the 1997–2007 NHIS. The estimate for 2007 was based on data collected from January through March. Data are based on household interviews of a sample of the civilian noninstitutionalized population.

■ In early 2007, the percentage of persons of all ages who experienced an asthma episode in the past 12 months was 4.2% (95% confidence interval = 3.71–4.70%), which was the same as the 2006 estimate of 4.2%.

■ Between 1997 and 2006, the annual percentage of persons of all ages who experienced an asthma episode in the past 12 months ranged from 3.9% to 4.3%.

Figure 15.2. Percentage of persons of all ages who experienced an asthma episode in the past 12 months, by age group and sex: United States, January–March 2007



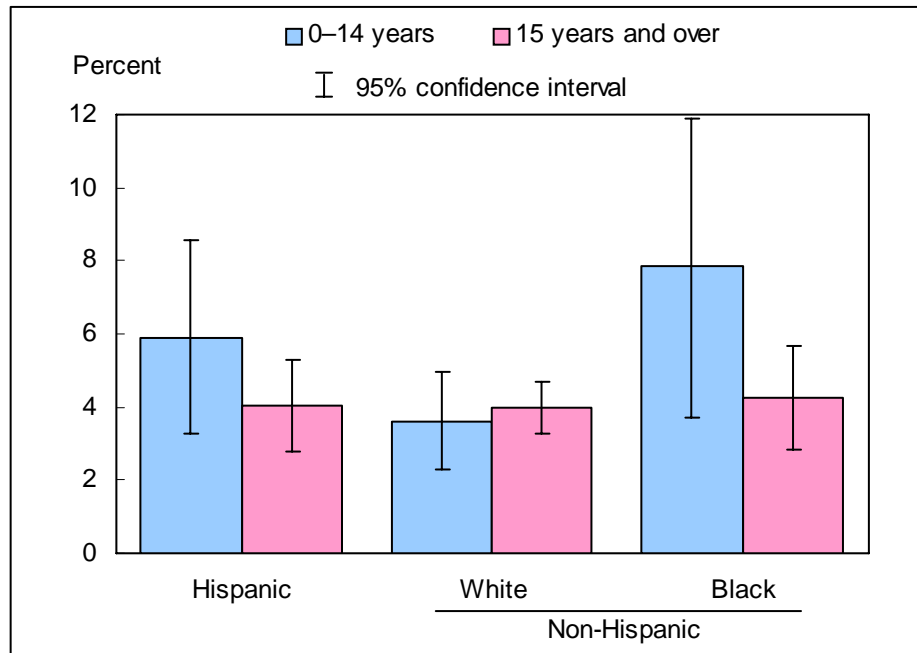
NOTES: Information on an episode of asthma or asthma attack during the past 12 months is self-reported by adults aged 18 years and over. For children under age 18 years, the information is collected from an adult family member, usually a parent, who is knowledgeable about the child's health. The analyses excluded 14 persons (0.2%) with unknown asthma episode status.

DATA SOURCE: Based on data collected from January through March in the Sample Adult and Sample Child Core components of the 2007 National Health Interview Survey. Data are based on household interviews of a sample of the civilian noninstitutionalized population.

■ For both sexes combined, the percentage of persons who had an asthma episode in the past 12 months was higher among children under age 15 years than among persons aged 15–34 years and 35 years and over, but the difference was not significant.

■ For age groups 15–34 years and 35 years and over, the percentage of persons who had an asthma episode in the past 12 months was higher among females than among males.

Figure 15.3. Sex-adjusted percentage of persons of all ages who experienced an asthma episode in the past 12 months, by age group and race/ethnicity: United States, January–March 2007



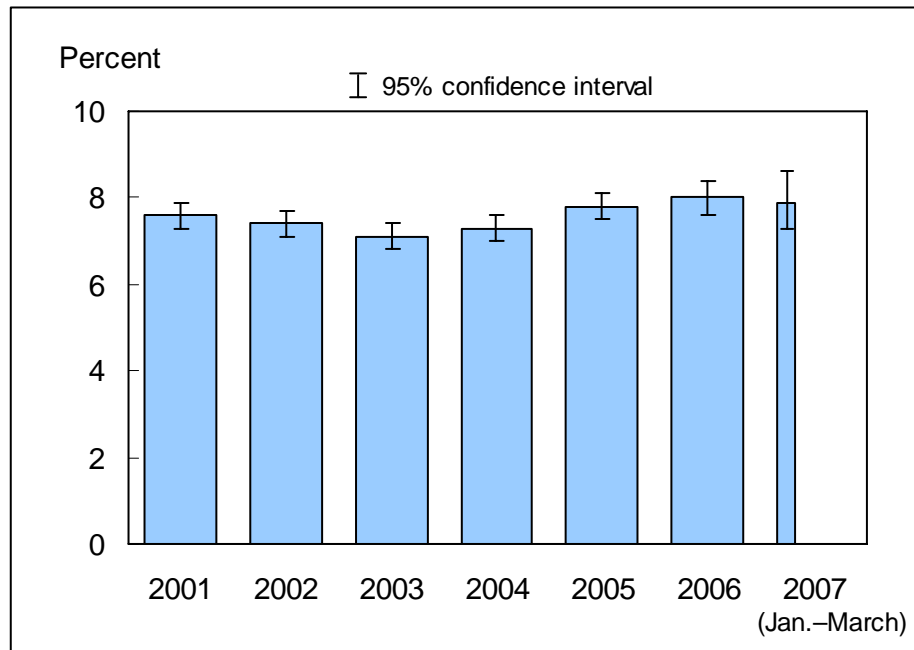
NOTES: Information on an episode of asthma or asthma attack during the past 12 months is self-reported by adults aged 18 years and over. For children under age 18 years, the information is collected from an adult family member, usually a parent, who is knowledgeable about the child's health. The analyses excluded 14 persons (0.2%) with unknown asthma episode status.

DATA SOURCE: Based on data collected from January through March in the Sample Adult and Sample Child Core components of the 2007 National Health Interview Survey. Data are based on household interviews of a sample of the civilian noninstitutionalized population.

■ For children under age 15 years, there was no significant difference in the sex-adjusted percentage of persons who had an asthma episode in the past 12 months between Hispanic persons, non-Hispanic white persons, and non-Hispanic black persons.

■ For persons 15 years and over, there was no significant difference in the sex-adjusted percentage of persons who had an asthma episode in the past 12 months between Hispanic persons, non-Hispanic white persons, and non-Hispanic black persons.

Figure 15.4. Prevalence of current asthma among persons of all ages: United States, 2001–March 2007



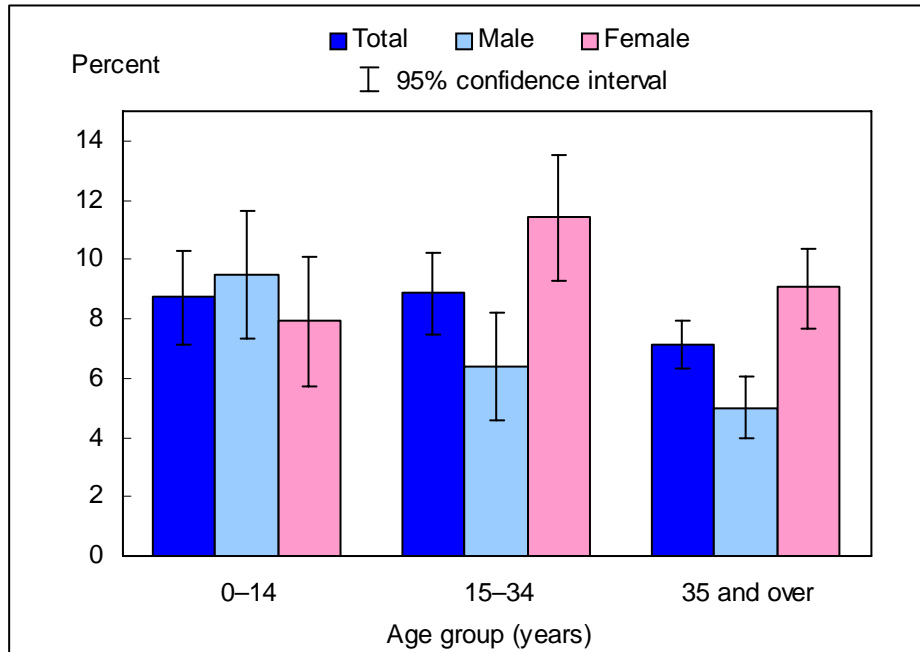
NOTES: Beginning in 2001, respondents were asked about current asthma in addition to the question regarding asthma episodes. Information on current asthma is self-reported by adults aged 18 years and over. For children under age 18 years, the information is collected from an adult family member, usually a parent, who is knowledgeable about the child's health. The analyses excluded people with unknown current asthma status (about 0.3% of respondents each year). Beginning with the 2003 data, the National Health Interview Survey (NHIS) transitioned to weights derived from the 2000 census. In this Early Release, estimates for 2001–2002 were recalculated using weights derived from the 2000 census. See "About This Early Release" and Table III in the Appendix for more details.

DATA SOURCE: Combined Sample Adult and Sample Child Core components of the 2001–2007 NHIS. The estimate for 2007 was based on data collected from January through March. Data are based on household interviews of a sample of the civilian noninstitutionalized population.

■ In early 2007, 7.9% (95% confidence interval = 7.28–8.60%) of persons of all ages currently had asthma, which was not significantly different from the 2006 estimate of 8.0%.

■ The annual prevalence of current asthma among persons of all ages was 7.6% in 2001, 7.4% in 2002, 7.1% in 2003, 7.3% in 2004, 7.8% in 2005 and 8.0% in 2006.

Figure 15.5. Prevalence of current asthma among persons of all ages, by age group and sex: United States, January–March 2007



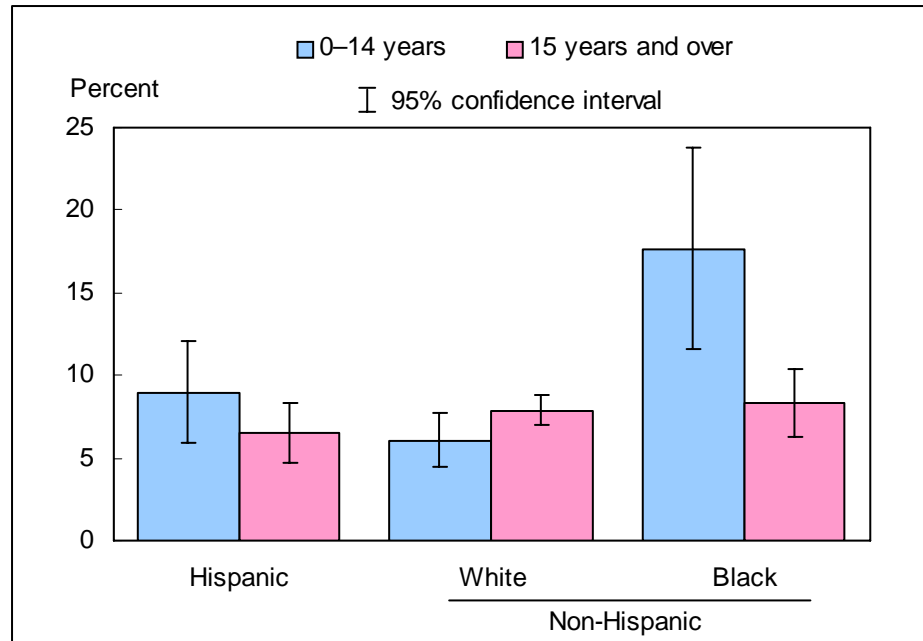
NOTES: Information on current asthma is self-reported by adults aged 18 years and over. For children under age 18 years, the information is collected from an adult family member, usually a parent, who is knowledgeable about the child's health. The analyses excluded 18 persons (0.2%) with unknown current asthma status.

DATA SOURCE: Based on data collected from January through March in the Sample Adult and Sample Child Core components of the 2007 National Health Interview Survey. Data are based on household interviews of a sample of the civilian noninstitutionalized population.

■ For both sexes combined, the prevalence of current asthma was higher among persons aged 15–34 years than among persons 35 years and over.

■ For age groups 15–34 years and 35 years and over, the prevalence of current asthma was higher among females than among males.

Figure 15.6. Sex-adjusted prevalence of current asthma among persons of all ages, by age group and race/ethnicity: United States, January–March 2007



NOTES: Information on current asthma is self-reported by adults aged 18 years and over. For children under age 18 years, the information is collected from an adult family member, usually a parent, who is knowledgeable about the child's health. The analyses excluded 18 persons (0.2%) with unknown current asthma status.

DATA SOURCE: Based on data collected from January through March in the Sample Adult and Sample Child Core components of the 2007 National Health Interview Survey. Data are based on household interviews of a sample of the civilian noninstitutionalized population.

- For children under age 15 years, the sex-adjusted prevalence of current asthma was higher among non-Hispanic black children than among Hispanic or non-Hispanic white children.
- For persons aged 15 years and over, there was no significant difference in the sex-adjusted prevalence of current asthma between Hispanic persons, non-Hispanic white persons and non-Hispanic black persons.

Data tables for Figures 15.1–15.6:

Data table for Figure 15.1. Percentage of persons of all ages who experienced an asthma episode in the past 12 months: United States, 1997–March 2007

| Year | Percent (95% confidence interval) | |
|---------------------------|-----------------------------------|---------------------------|
| | Crude ¹ | Age-adjusted ² |
| 1997 | 4.2 (4.0-4.4) | 4.2 (3.9-4.4) |
| 1998 | 4.0 (3.7-4.2) | 3.9 (3.7-4.2) |
| 1999 | 3.9 (3.6-4.1) | 3.9 (3.6-4.1) |
| 2000 | 4.0 (3.8-4.2) | 4.0 (3.8-4.2) |
| 2001 | 4.3 (4.1-4.6) | 4.3 (4.1-4.5) |
| 2002 | 4.3 (4.0-4.5) | 4.3 (4.0-4.5) |
| 2003 | 3.9 (3.7-4.1) | 3.9 (3.7-4.1) |
| 2004 | 4.1 (3.8-4.3) | 4.1 (3.8-4.3) |
| 2005 | 4.2 (3.99-4.43) | 4.2 (4.00-4.44) |
| 2006 | 4.2 (3.96-4.52) | 4.3 (3.98-4.54) |
| January–March 2007 | 4.2 (3.71-4.70) | 4.2 (3.71-4.71) |

¹Crude estimates are presented in the figure.

²Estimates are age adjusted using the projected 2000 U.S. population as the standard population and using three age groups: 0–14 years, 15–34 years, and 35 years and over.

NOTES: Beginning with the 2003 data, the National Health Interview Survey (NHIS) transitioned to weights derived from the 2000 census. In this Early Release, estimates for 2000–2002 were recalculated using weights derived from the 2000 census. See “About This Early Release” and Table III in the Appendix for more details.

DATA SOURCE: NHIS, 1997–March 2007. Data are based on household interviews of a sample of the civilian noninstitutionalized population.

Data table for Figure 15.2. Percentage of persons of all ages who experienced an asthma episode in the past 12 months, by age group and sex: United States, January–March 2007

| Age and sex | Percent | 95% confidence interval |
|---|---------|-------------------------|
| 0–14 years | | |
| Total | 4.9 | 3.64-6.11 |
| Male | 5.4 | 3.68-7.04 |
| Female | 4.4 | 2.72-6.00 |
| 15–34 years | | |
| Total | 4.6 | 3.59-5.63 |
| Male | 3.2 | 1.75-4.62 |
| Female | 6.0 | 4.56-7.53 |
| 35 years and over | | |
| Total | 3.7 | 3.06-4.38 |
| Male | 2.5 | 1.73-3.18 |
| Female | 4.9 | 3.79-5.94 |
| All ages: crude¹ | | |
| Total | 4.2 | 3.71-4.70 |
| Male | 3.3 | 2.61-3.97 |
| Female | 5.1 | 4.33-5.83 |
| All ages: age-adjusted² | | |
| Total | 4.2 | 3.71-4.71 |
| Male | 3.3 | 2.61-3.95 |
| Female | 5.1 | 4.33-5.82 |

¹Crude estimates are presented in the figure.

²Estimates are age adjusted using the projected 2000 U.S. population as the standard population and using three age groups: 0–14 years, 15–34 years, and 35 years and over.

DATA SOURCE: National Health Interview Survey, January–March 2007. Data are based on household interviews of a sample of the civilian noninstitutionalized population.

Data table for Figure 15.3. Sex-adjusted percentage of persons of all ages who experienced an asthma episode in the past 12 months, by age group and race/ethnicity: United States, January–March 2007

| Age and race/ethnicity | Percent ¹ | 95% confidence interval |
|--------------------------|----------------------|-------------------------|
| 0–14 years | | |
| Hispanic or Latino | 5.9 | 3.26-8.56 |
| Not Hispanic or Latino: | | |
| White, single race | 3.6 | 2.28-4.98 |
| Black, single race | 7.8 | 3.78-11.91 |
| 15 years and over | | |
| Hispanic or Latino | 4.0 | 2.78-5.30 |
| Not Hispanic or Latino: | | |
| White, single race | 4.0 | 3.30-4.70 |
| Black, single race | 4.3 | 2.85-5.66 |

¹Estimates are sex adjusted using the projected 2000 U.S. population as the standard population.

DATA SOURCE: National Health Interview Survey, January–March 2007. Data are based on household interviews of a sample of the civilian noninstitutionalized population.

Data for Figure 15.4. Prevalence of current asthma among persons of all ages: United States, 2001–March 2007

| Year | Percent (95% confidence interval) | |
|---------------------------|-----------------------------------|---------------------------|
| | Crude ¹ | Age-adjusted ² |
| 2001 | 7.6 (7.3-7.9) | 7.6 (7.3-7.9) |
| 2002 | 7.4 (7.1-7.7) | 7.4 (7.1-7.7) |
| 2003 | 7.1 (6.8-7.4) | 7.1 (6.8-7.4) |
| 2004 | 7.3 (7.0-7.6) | 7.3 (7.1-7.7) |
| 2005 | 7.8 (7.50-8.10) | 7.8 (7.51-8.11) |
| 2006 | 8.0 (7.61-8.41) | 8.0 (7.62-8.43) |
| January–March 2007 | 7.9 (7.28-8.60) | 8.0 (7.29-8.62) |

¹Crude estimates are presented in the figure.

²Estimates are age adjusted using the projected 2000 U.S. population as the standard population and using three age groups: 0–14 years, 15–34 years, and 35 years and over.

NOTES: Beginning in 2001, respondents were asked about current asthma in addition to the question regarding asthma episodes. Beginning with 2003 data, the National Health Interview Survey (NHIS) transitioned to weights derived from the 2000 census. In this Early Release, estimates for 2000–2002 were recalculated using weights derived from the 2000 census. See “About This Early Release” and Table III in the Appendix for more details.

DATA SOURCE: NHIS, 2001–March 2007. Data are based on household interviews of a sample of the civilian noninstitutionalized population.

Data table for Figure 15.5. Prevalence of current asthma among persons of all ages, by age group and sex: United States, January–March 2007

| Age and sex | Percent | 95% confidence interval |
|---|---------|-------------------------|
| 0–14 years | | |
| Total | 8.7 | 7.16-10.29 |
| Male | 9.5 | 7.35-11.64 |
| Female | 7.9 | 5.75-10.10 |
| 15–34 years | | |
| Total | 8.9 | 7.59-10.21 |
| Male | 6.4 | 4.55-8.23 |
| Female | 11.4 | 9.37-13.49 |
| 35 years and over | | |
| Total | 7.1 | 6.29-7.95 |
| Male | 5.0 | 3.94-6.03 |
| Female | 9.1 | 7.72-10.39 |
| All ages: crude¹ | | |
| Total | 7.9 | 7.28-8.60 |
| Male | 6.3 | 5.45-7.24 |
| Female | 9.5 | 8.47-10.46 |
| All ages: age-adjusted² | | |
| Total | 8.0 | 7.29-8.62 |
| Male | 6.3 | 5.45-7.23 |
| Female | 9.5 | 8.47-10.46 |

¹Crude estimates are presented in the figure.

²Estimates are age adjusted using the projected 2000 U.S. population as the standard population and using three age groups: 0–14 years, 15–34 years, and 35 years and over.

DATA SOURCE: National Health Interview Survey, January–March 2007. Data are based on household interviews of a sample of the civilian noninstitutionalized population.

Data table for Figure 15.6. Sex-adjusted prevalence of current asthma among persons of all ages, by age group and race/ethnicity: United States, January–March 2007

| Age and race/ethnicity | Percent ¹ | 95% confidence interval |
|--------------------------|----------------------|-------------------------|
| 0–14 years | | |
| Hispanic or Latino | 9.0 | 5.97-12.02 |
| Not Hispanic or Latino: | | |
| White, single race | 6.1 | 4.41-7.75 |
| Black, single race | 17.6 | 11.54-23.75 |
| 15 years and over | | |
| Hispanic or Latino | 6.5 | 4.72-8.31 |
| Not Hispanic or Latino: | | |
| White, single race | 7.9 | 7.02-8.77 |
| Black, single race | 8.3 | 6.27-10.37 |

¹Estimates are sex adjusted using the projected 2000 U.S. population as the standard population.

DATA SOURCE: National Health Interview Survey, January–March 2007. Data are based on household interviews of a sample of the civilian noninstitutionalized population.