

Interoperability between vital records and EHRs in Utah

Jeff Duncan, MS

Utah Department of Health



Timeline of events—UDOH-Intermountain Death Interface

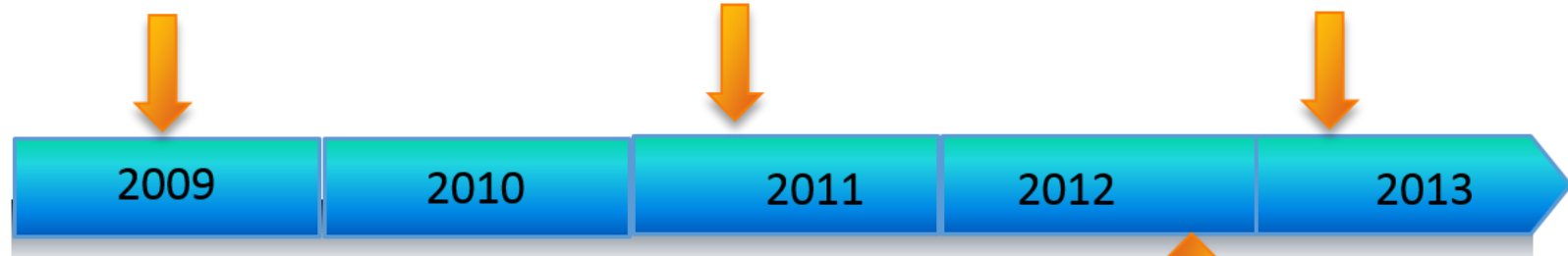
CDC Pan Flu Grant

UDOH received funding to create a death reporting interface with Intermountain.

Pilot testing

Implemented at one Intermountain Clinic

Pilot test expanded to Salt Lake City Metro Area



HL7 Version 2.3 Interface Planning and Development
Interface development and testing

Upgrade to DSTU Project begins

DSTU Implementation

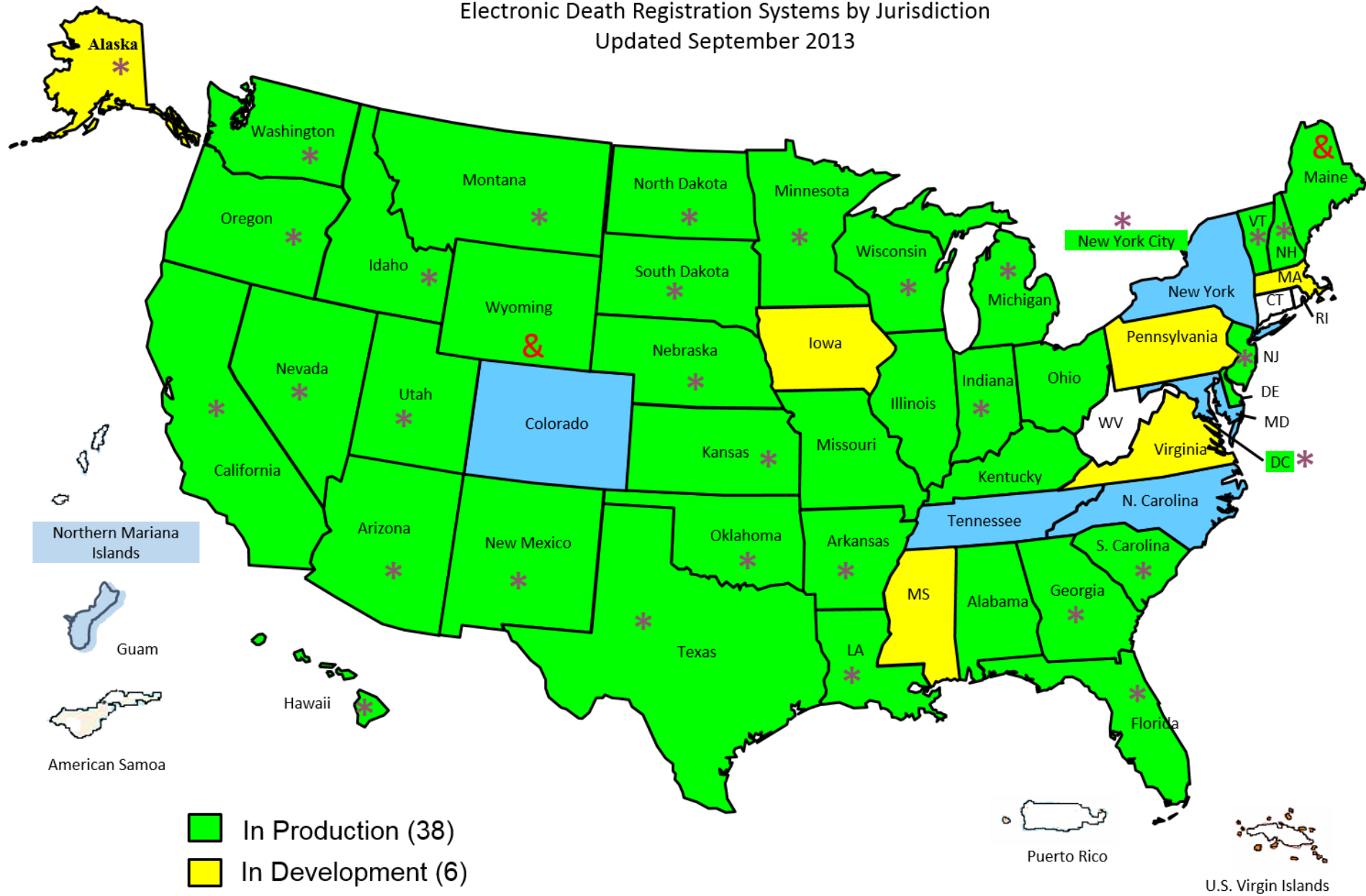


Death Registration in the US

- Death certificate is...
 - A legal document
 - A public health report
- A cooperation between funeral directors, physicians, coroners and medical examiners, and public health departments
- Electronic death registration
 - 38 states now have some form of EDR
 - Utah's Electronic Death Entry Network (EDEN) August 1, 2006

Electronic Death Registration Systems by Jurisdiction

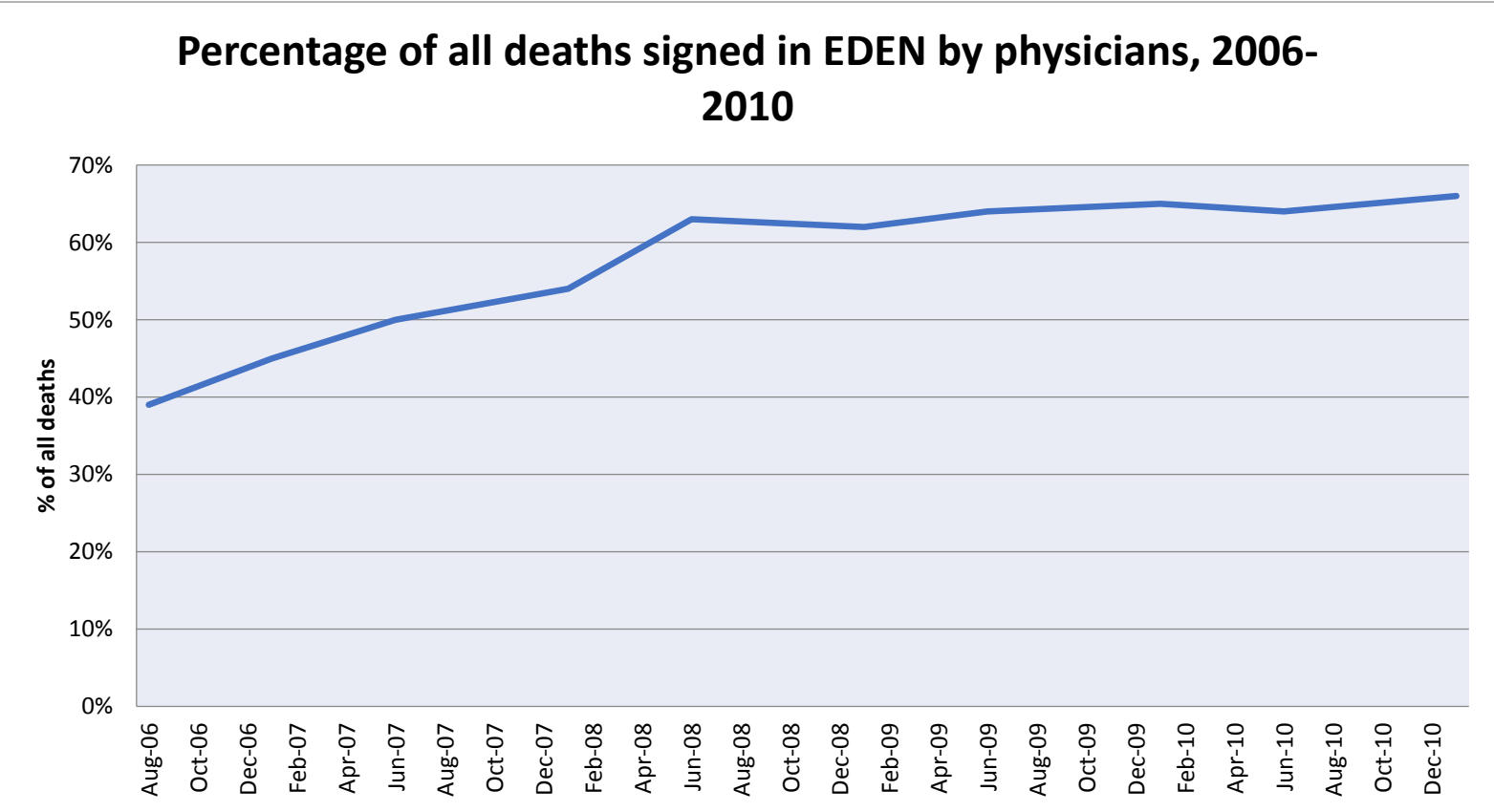
Updated September 2013



- In Production (38)
- In Development (6)
- Planning/Requirements Stage (5)
- Using STEVE-ER for death data entry(2)

- * Received SSA Funding
- & In Production/No SSN Verification

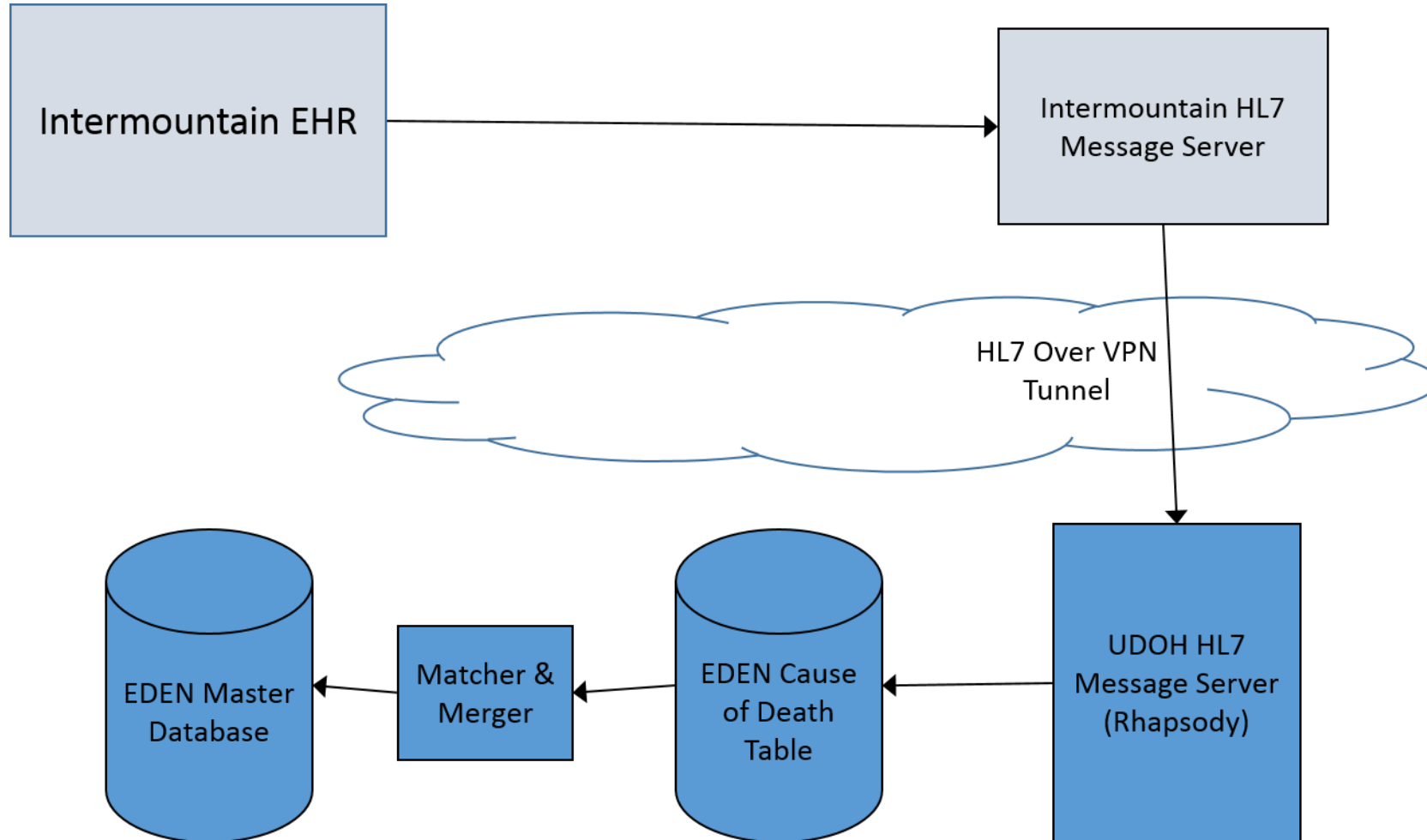
The Eden plateau



Reasons for low physician participation

- About 75 % of physicians that certify a death do <1 death certificate per year.
- They account for about 35 % of all DC's
- Difficult to maintain EDEN skills
- Lack of incentive to complete death certificates

From Intermountain to EDEN



Intermountain's EHR screen:

HELP2 Clinical Desktop (Version 2010.M05.3) - Microsoft Internet Explorer

File Edit View Favorites Tools Help

Back Forward Stop Refresh Home Search Favorites

Address https://clin-stage.co.ihc.com/ResultsReview/login?calledFrom=ResultsReview&closeLogonScreenOnExit=no&allowProximityCardLogon=no&name=core&method=logon&logging

HELP2 clinical desktop XTESTDQ, GLUCOSE NII Room: N908 DOB: 07/21/1978 Age: 31Y Sex: M EMPI: 548029408 MRN: 7293982

My Health v0.2.7

Select Patient
Clinic Schedule
Lab
Micro
Clinical Notes
Radiology
Allergies
Meds Review
Problems
Vital Signs
Height/Weight
Demographics
ECG
Insurance
Message Log
Lab Order Entry
Alert Review
Inpatient Reports
Web Forms
HELP/Tandem
POE - Ordersets
Report Manager
HotText
Population View
Encounters
DRT
USIS (WebKIDS)
Protocols
Image Acquisition
EDIS
Inbox
Rx
4Medica
CAC INR
MyLinks
Death Certs - EDEN
CAC

E-Resources
Need Help?
Password
What's New?

Suggestions

Death Certs - EDEN

Complete the following fields (*=Required field)

Deceased Patient Information

EMPI	548029408
*Patient Name	XTESTDQ, GLUCOSE NINE
Social Security Number	
*Gender	Male
*Date of Birth	7/21/1978
*Death Date	6/1/2010
*Last Seen by Certifier	5/30/2010

Cause of Death Information

[Detailed Instructions](#)

Part I:
Enter the **Chain of Events** - diseases, injuries or complications - that directly caused the death. DO NOT enter terminal events such as cardiac arrest, respiratory arrest or ventricular fibrillation without showing the etiology. DO NOT abbreviate. Enter only one cause on a line.

*Immediate Cause (Final disease or condition resulting in death)	Time Interval (Number, Unit Type)
Primary Cause of Death	2 Weeks
Sequentially list conditions, if any, leading to the cause listed above	
Secondary Cause of Death	3 Years
Enter the UNDERLYING CAUSE (disease or injury that initiated the events resulting in death)	
Underlying Cause of Death	12 Years

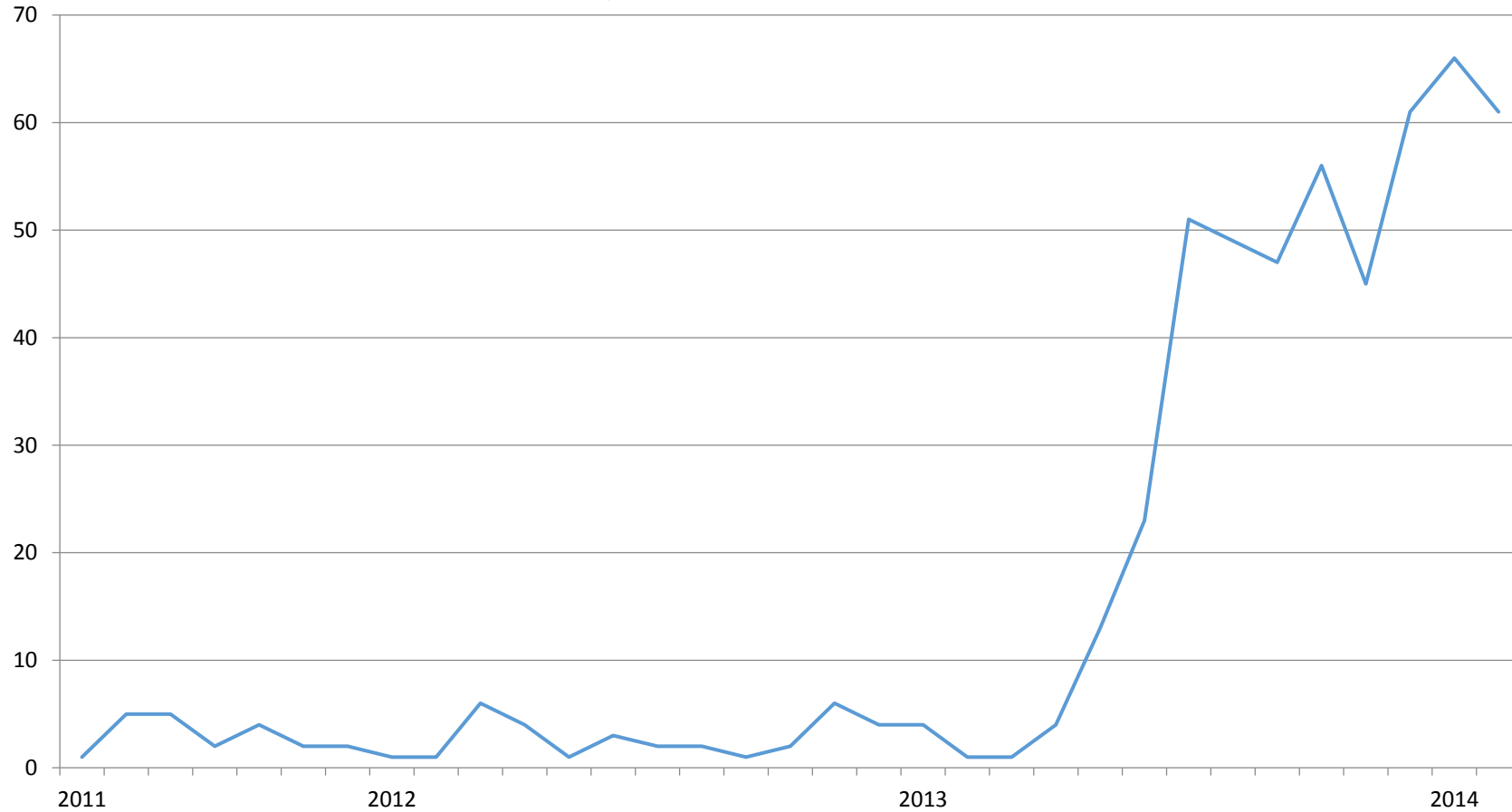
Part II : Enter other **significant conditions contributing to death** but not resulting in the underlying cause given in **PART I**

Contributing Conditions

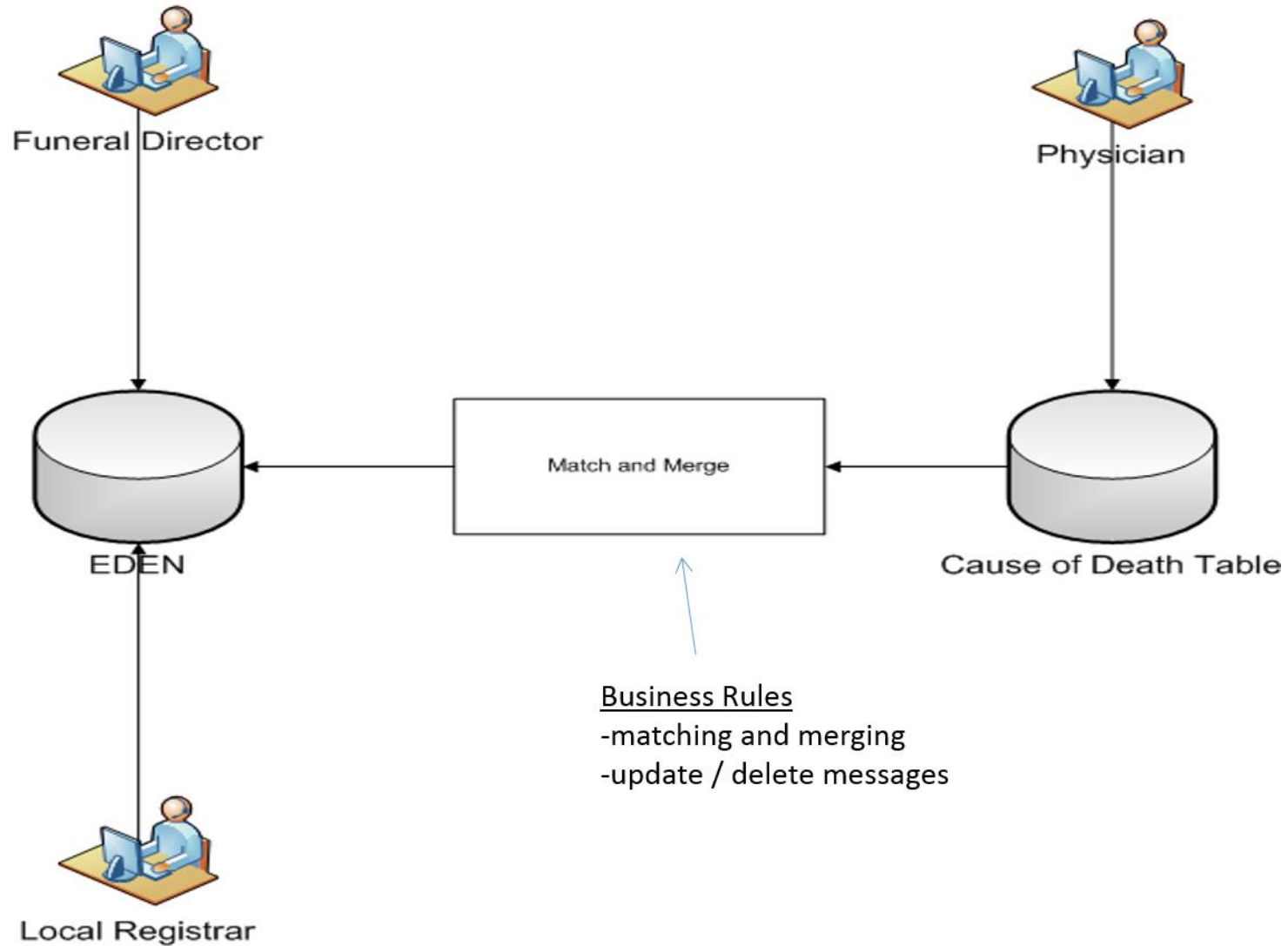
HL7 death message

- In 2009 UDOH and Intermountain created an HL7 v2.3.1 message using a lot of z-segments
- We used existing gateway for immunization records from Intermountain
- Began pilot testing in 2011 at a large family practice clinic
- In 2013, began work to implement a v2.5.1 draft standard death message

Death Certificates per Month

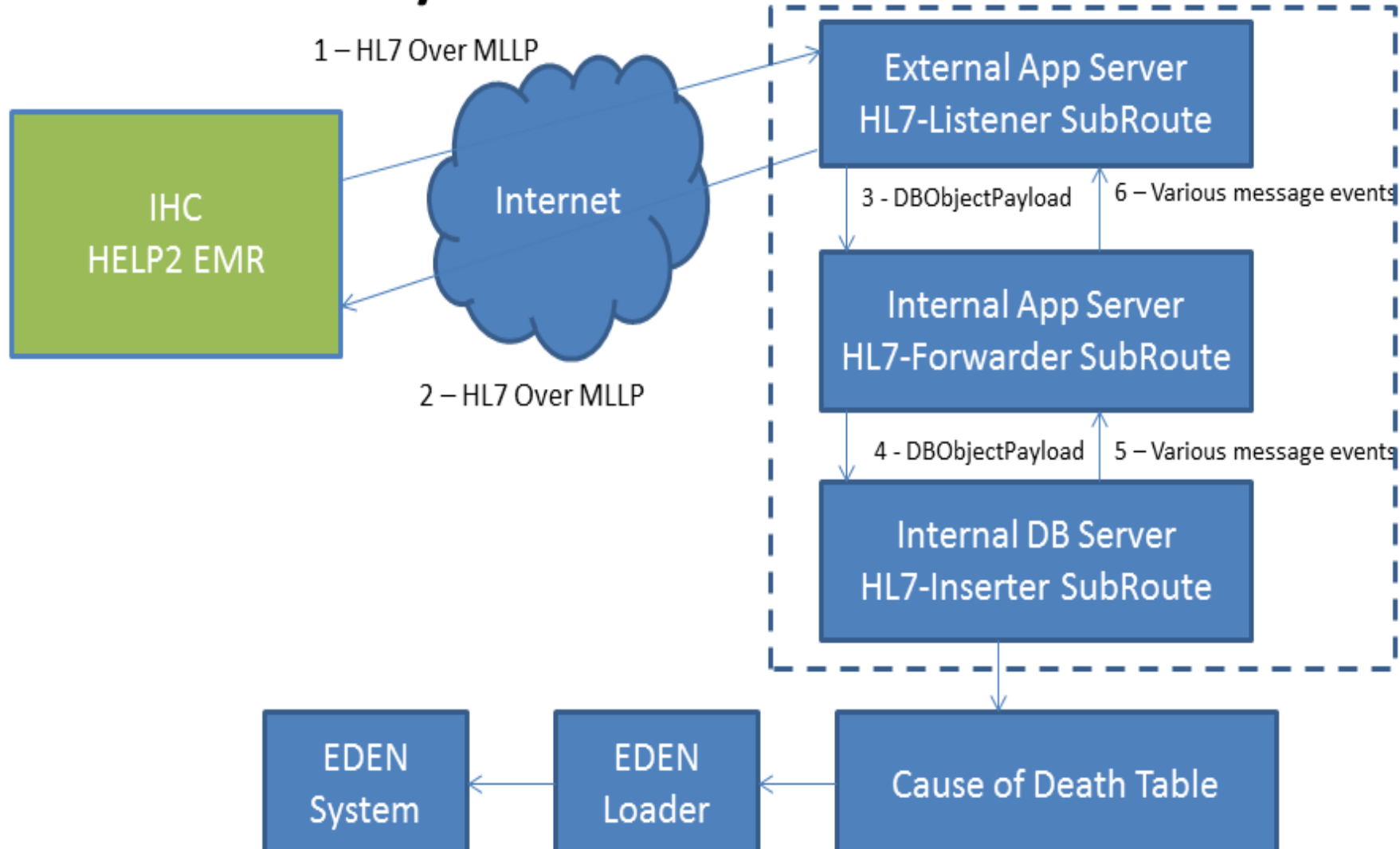


Death Certification Process

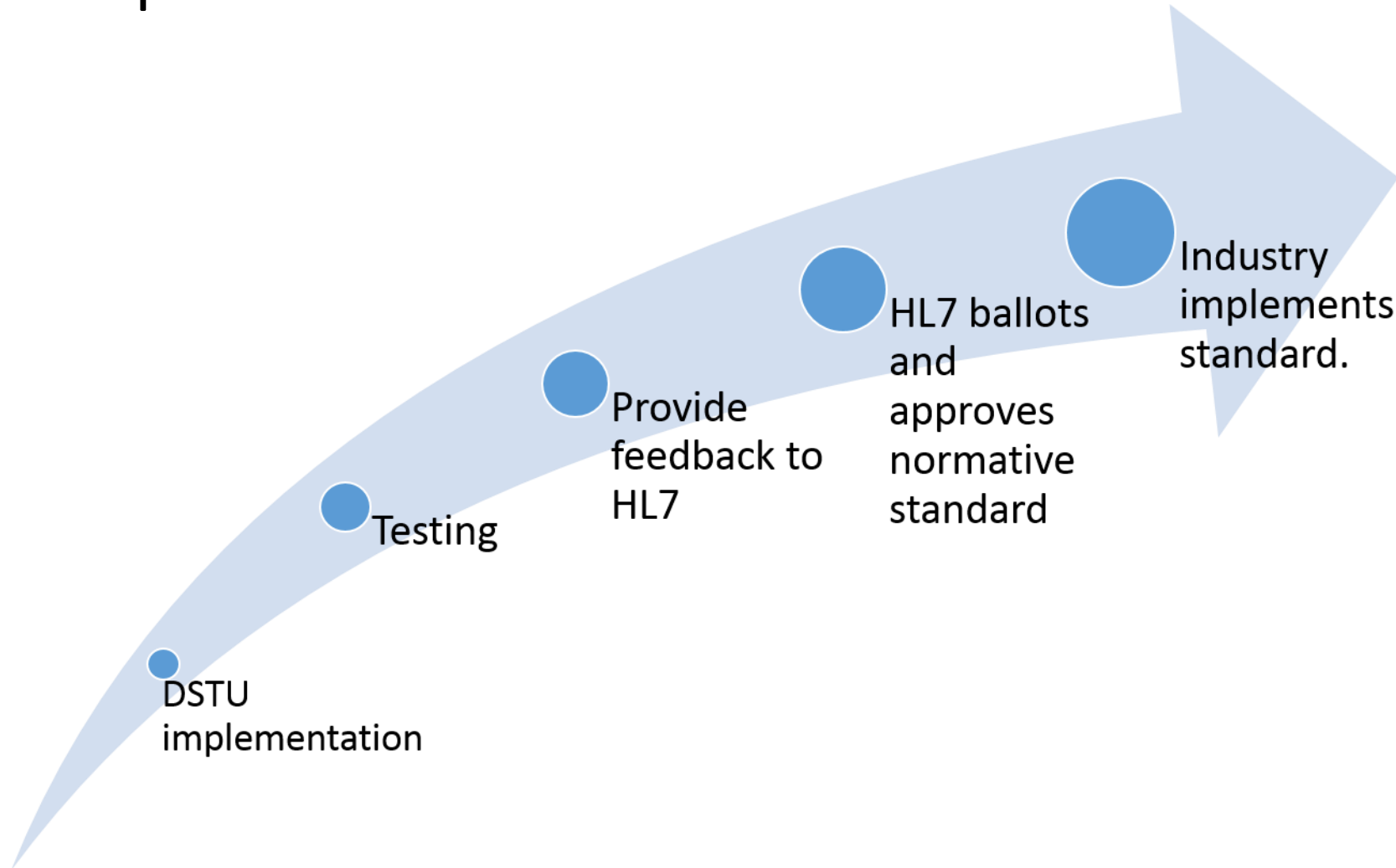


The

System Architecture



Next Steps



Acknowledgements

- NCHS
 - Michelle Williamson, Hetty Khan, Delton Atkinson
- Intermountain Healthcare Team
 - Jacob Tripp, PhD
- Utah Department of Health
 - Leisa Finch, EDR Coordinator
- Multidimensional Software Creations (MDSC)
 - Stephen Clyde, PhD
 - Mike Jolley, Project Manager