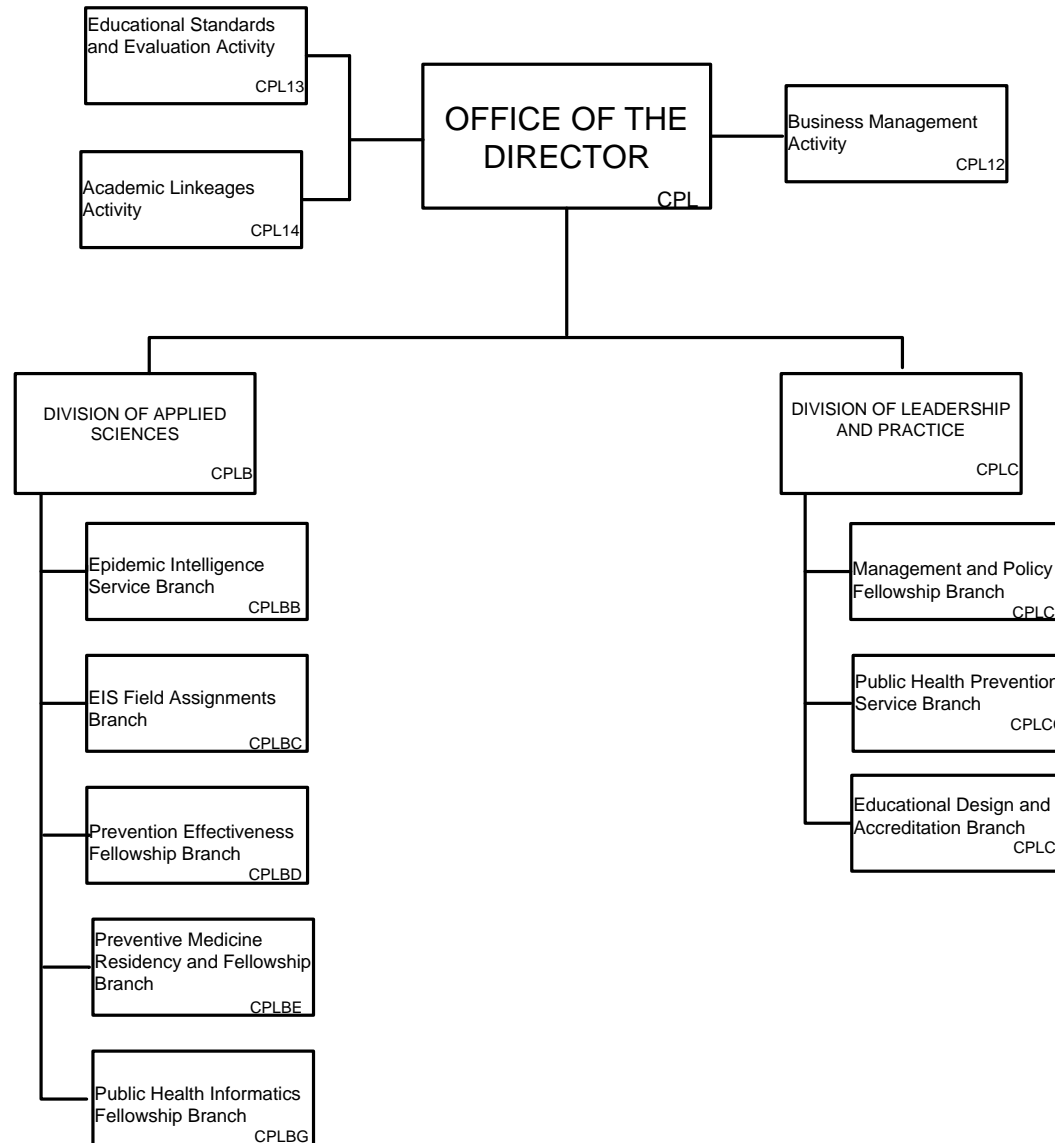


**DEPARTMENT OF HEALTH AND HUMAN SERVICES  
CENTERS FOR DISEASE CONTROL AND PREVENTION**

**OFFICE OF SURVEILLANCE, EPIDEMIOLOGY AND LABORATORY SERVICES (CP)**

**SCIENTIFIC EDUCATION AND PROFESSIONAL DEVELOPMENT PROGRAM OFFICE (CPL)**



APPROVED 03/10/2011