

HIV/AIDS

Surveillance Supplemental Report

==== Volume 14, Number 3 ====

Deaths Among Persons with AIDS through December 2006



DEPARTMENT OF HEALTH AND HUMAN SERVICES
Public Health Service
Centers for Disease Control and Prevention
Atlanta, Georgia 30333



The *HIV/AIDS Surveillance Supplemental Report* is published by the Division of HIV/AIDS Prevention, National Center for HIV/AIDS, Viral Hepatitis, STD, and TB Prevention, Coordinating Center for Infectious Diseases, Centers for Disease Control and Prevention (CDC), U.S. Department of Health and Human Services, Atlanta Georgia.

The *HIV/AIDS Surveillance Supplemental Report* is not copyrighted and may be used and copied without permission. Citation of the source is, however, appreciated.

Suggested citation

Centers for Disease Control and Prevention. Deaths among persons with AIDS through December 2006, *HIV/AIDS Surveillance Supplemental Report*, 2009. Vol. 14(No. 3): [inclusive page numbers]. <http://www.cdc.gov/hiv/topics/surveillance/resources/reports/>.

On the web: <http://www.cdc.gov/hiv/topics/surveillance/resources/reports/>

Confidential information, referrals, and educational material on HIV infection and AIDS

CDC-INFO (formerly, the CDC National AIDS Hotline)

1-800-232-4636 (in English, en Espanol)

1-888-232-6348 (TTY)

Email: cdcinfo@cdc.gov

Acknowledgements

Publication of this report would not have been possible without the contributions of the state and territorial health departments and the HIV/AIDS surveillance programs that provided surveillance data to CDC. We also acknowledge the National Center for Health Statistics for providing death certificate data on the leading causes of death, including HIV disease, in the general population of residents of the United States and the District of Columbia.

This report was prepared by the following staff and contractors of the Division of HIV/AIDS Prevention, National Center for HIV/AIDS, Viral Hepatitis, STD, and TB Prevention, CDC: William Adih, Michael Campsmith, Denise Hughes, Jianmin Li, Irene Hall, Marie Morgan (editing), Janet Brzuskiwicz (graphics), and Curt Wommack (desktop publishing).

The HIV/AIDS design element on the cover is used with the permission of the American Red Cross.

Contents

| | | |
|-----------|---|----|
| | Commentary | 4 |
| Figure 1a | Proportion of persons surviving, by months after AIDS diagnosis by AIDS-defining opportunistic illness (OI) at the time of AIDS diagnosis, 1994-2005, United States and dependent areas | 6 |
| Figure 1b | Proportion of persons surviving, by months after AIDS diagnosis by low CD4 only at the time of AIDS diagnosis, 1994-2005, United States and dependent areas | 7 |
| Figure 2 | Proportion of persons surviving, by months after AIDS diagnosis by CD4 only or by AIDS-defining opportunistic illness (OI) at the time of AIDS diagnosis, 1994-2005, United States and dependent areas | 8 |
| Table 1 | AIDS cases reported through 2007 by age at diagnosis, and persons reported to be living with AIDS as of December 2007, by area of residence at AIDS diagnosis, United States and dependent areas | 9 |
| Table 2 | Estimated number of deaths in persons with AIDS and death rates per 100,000 population in 2006, and cumulative deaths through December 2006, by age and area of residence at death, United States and dependent areas | 11 |
| Table 3 | Estimated number of deaths in adults/adolescents with AIDS and death rates per 100,000 population in 2006, and cumulative deaths through December 2006, by region of residence at death and race/ethnicity, United States and dependent areas | 13 |
| Table 4 | Estimated number of deaths in adults/adolescents with AIDS, by sex, transmission category, and region of residence at death, for deaths in 2006, and cumulative deaths through December 2006, United States and dependent areas | 14 |
| Table 5 | Estimated number of deaths in adults/adolescents with AIDS, by sex, race/ethnicity, and transmission category, for deaths in 2006 and cumulative deaths through December 2006, United States and dependent areas | 17 |
| Table 6 | Estimated number of deaths in persons with AIDS and death rates per 100,000 population for 2006, and cumulative deaths through December 2006, by race/ethnicity, sex, and age at death, United States and dependent areas | 19 |
| Figure 3 | Estimated cases and deaths among adults and adolescents with AIDS, by year of diagnosis or death, 1985-2006, United States and dependent areas | 21 |
| Figure 4 | Estimated deaths among adults and adolescents with AIDS, by race/ethnicity and year of death, 1985-2006, United States and dependent areas | 22 |
| Figure 5 | Estimated deaths among adult and adolescent American Indians/Alaska Natives, Asians, and Native Hawaiians/other Pacific Islanders with AIDS, by race/ethnicity and year of death, 1985-2006, United States and dependent areas | 23 |
| Figure 6 | Estimated cases and deaths among adults and adolescents with AIDS, by sex and year of diagnosis or death, 1985-2006, United States and dependent areas | 24 |
| Figure 7 | Estimated deaths among adult and adolescent males with AIDS, by transmission category and year of death, 1985-2006, United States and dependent areas | 25 |
| Figure 8 | Estimated deaths among adult and adolescent females with AIDS, by transmission category and year of death, 1985-2006, United States and dependent areas | 26 |
| Figure 9 | Estimated deaths among adults and adolescents with AIDS, by region of residence and year of death, 1985-2006, United States and dependent areas | 27 |
| Table 7 | Number of deaths, percent of total deaths, and death rates per 100,000 population for the 10 leading causes of deaths among persons 25-34 years of age, by race/ethnicity and sex, 2006, 50 states and the District of Columbia | 28 |
| Table 8 | Number of deaths, percent of total deaths, and death rates per 100,000 population for the 10 leading causes of deaths among persons 35-44 years of age, by race/ethnicity and sex, 2006, 50 states and the District of Columbia | 30 |
| Figure 10 | Trends in annual rates of death from leading causes of death among persons 25-44 years old, 1987-2006, 50 states and the District of Columbia | 33 |
| | Technical Notes | 34 |

Commentary

Through 2007, an estimated total of 1,051,875 persons in the United States and dependent areas were diagnosed with AIDS (Table 1). At the end of 2006, an estimated 446,098 persons in the United States and dependent areas were living with AIDS (Table 1).

Through the end of 2006, the CDC estimated that 568,737 deaths had occurred among persons with AIDS in the United States and dependent areas (Table 2). This report describes deaths among persons with AIDS by year of death, age group, geographic area, HIV transmission category, and race/ethnicity. The data in this supplement cover deaths occurring through the end of December 2006 and reported to CDC by June 30, 2008. This was done to allow sufficient time for the deaths to be reported. Deaths among persons with AIDS can be attributable to any cause of death, not necessarily HIV-related disease. Persons with AIDS may die from causes unrelated to HIV infection (such as lung cancer or motor vehicle accidents). This report also includes death certificate data compiled by the National Center for Health Statistics (NCHS) on the leading causes of death, including HIV disease, in the general population of residents of the United States and the District of Columbia.

The number of deaths in persons with AIDS increased each year from the beginning of the epidemic in 1981 until 1995, reflecting the increase in AIDS incidence through the 1980s and early 1990s. Decreases in the number of deaths in 1996 and 1997 were considerably greater than expected if based only on the decrease in incidence. The introduction of highly active antiretroviral therapy (HAART) in 1996 had a substantial positive effect on the survival time of persons with AIDS. Decreases over the past several years in the number of deaths among persons with AIDS are evident in all geographic and demographic groups in the United States.

Figures 1a and 1b illustrate the proportion of persons surviving by month among persons whose AIDS diagnoses were made during 1994–2005, by year of diagnosis, and based on either the presence of AIDS-defining opportunistic diseases or low CD4 count only, respectively. Figure 2 shows the proportion of persons surviving by month among persons who were diagnosed during 1994–2005, by method of diagnosis. Survival (the estimated proportion of persons surviving a given length of time after diagnosis) increased with advancing year of diagnosis (Figures 1a and 1b). Year to year survival differences were small during 1998–2005. Survival was better for persons diagnosed

with AIDS due to low CD4 count compared to persons diagnosed with AIDS due to an opportunistic illness (Figure 2).

With the introduction of HAART in 1996, AIDS diagnoses and the deaths of persons with AIDS declined dramatically until 1998, and then leveled off (Figure 3). The decrease in the number of estimated deaths among persons with AIDS was first evident in 1995 among whites and the following year among all other racial/ethnic groups (Figures 4 and 5), and for both men and women (Figure 6). Declines in deaths somewhat reflect differential declines in AIDS incidence among persons in the different HIV transmission categories. The number of estimated deaths among male adults and adolescents first began to decrease in 1994 among persons exposed through receipt of blood, blood components, or tissue; followed by decreases in 1996 among injection drug users (IDUs), men who have sex with men (MSM) who were also IDUs and males exposed through high-risk heterosexual contact (high-risk heterosexual contact is defined as heterosexual contact with a person known to have, or to be at high risk for, HIV infection, e.g., an injection drug user). In 1995, a decrease in deaths was seen among MSM (Figure 7). Among female adults and adolescents, the number of estimated deaths first began to decrease in 1991 among persons exposed through receipt of blood, blood components, or tissue; followed by decreases in 1996 among IDUs and females exposed through high-risk heterosexual contact (Figure 8). In all four geographic regions of the United States (Northeast, South, Midwest, and West), deaths began to decrease in 1996 (Figure 9).

Death certificate data compiled by the NCHS show that HIV disease was the leading cause of death among persons 24 to 44 years old in 1993, 1994 and 1995. In 2006, HIV disease was the 6th leading cause of death in this age group, after unintentional injury, cancer, heart disease, suicide, and homicide (Figure 10). In selected demographic groups, HIV disease remained a high ranking cause of death in 2006. In the group aged 25-34 years, HIV disease ranked as a cause of death as follows: Among males, HIV disease was the 4th leading cause of death in blacks/African Americans and the 6th leading cause of death in Hispanics/Latinos. Among white and American Indian/Alaska Native males, HIV disease was the 8th leading cause of death. HIV disease did not rank among the 10 leading causes of death among Asian and Native Hawaiian/other Pacific Islander males. Among females, HIV was the 4th and 7th leading cause of death in blacks/African Americans

and Hispanics/Latinos, respectively, and did not rank among the 10 leading causes of death in the other racial/ethnic categories (Table 7). In the group aged 35-44 years, HIV disease ranked as a cause of death as follows: Among males, HIV disease was the 3rd and 4th leading cause of death in blacks/African Americans and Hispanics/Latinos, respectively. HIV disease ranked as the 6th leading cause of death in Native Hawaiian/other Pacific Islander and white males, 7th among American Indian/Alaska Native and 8th among Asian males. Among females, HIV disease was the 3rd leading cause of death in blacks/African Americans, and 4th and 8th in Hispanics/Latinos and American Indians/Alaska Natives, respectively. HIV disease did not rank among the 10 leading causes of death among Asian, Native Hawaiian/other Pacific Islander and white females (Table 8).

Despite overall declines in mortality among persons with AIDS, mortality rates varied by region and race (Table 3) and age group and race (Table 6).

ADDITIONAL READING

1. CDC. Epidemiology of HIV/AIDS --- United States, 1981 – 2005. *MMWR* 2006; 55(21): 589-592.
2. Fleming PL, Ward JW, Karon JM, Hanson DL, De Cock KM. Declines in AIDS incidence and deaths in the USA: a signal change in the epidemic. *AIDS*. 1998; 112 (supp A): S55-SS61.
3. Karon JM, Fleming PL, Steketee RW, De Cock KM. HIV in the United States at the turn of the century: an epidemic in transition. *Am J Public Health*. 2001; 91: 1060-1068.
4. Lee LM, Karon JM, Selik R, Neal JJ, Fleming PL. Survival after AIDS diagnosis in adolescents and adults during the treatment era, United States, 1984-1997. *JAMA*. 2001; 285: 1308-15.
5. Selik RM, Byers, Jr., RH, Dworkin MS. Trends in Diseases Reported on U.S. Death Certificates That Mentioned HIV Infection, 1987-1999. *J Acquir Immune Defic Syndr*. 2002; 29(4): 378-387.
6. Hall HI, Song R, Rhodes P, et al. Estimation of HIV incidence in the United States. *JAMA*. 2008; 300(5): 520-529.
7. McDavid Harrison K, Kajese T, Hall HI, et al. Risk factor redistribution of the national HIV/AIDS surveillance data: an alternative approach. *Public Health Reports*. 2008; 123: 618-627
8. Public use slides on mortality among persons with HIV/AIDS are available at:
<http://www.cdc.gov/hiv/topics/surveillance/resources/slides/mortality/index.htm>
9. Information about cause-of-death data from death certificates is available at:
<http://www.cdc.gov/nchs/deaths.htm>
10. CDC. Revised surveillance case definitions for HIV infection among adults, adolescents, and children aged <18 months and for HIV infection and AIDS among children aged 18 months to <13 years --- United States. *MMWR* 2008; 57(RR-10):1-8.
11. CDC. *HIV/AIDS Surveillance Report*, 2007. Vol.19. Atlanta: U.S. Department of Health and Human Services, CDC; 2009. Also available at: <http://www.cdc.gov/hiv/topics/surveillance/resources/reports/>

Figure 1a. Proportion of persons surviving, by months after AIDS diagnosis by AIDS-defining opportunistic illness (OI) at the time of AIDS diagnosis, 1994-2005, United States and dependent areas

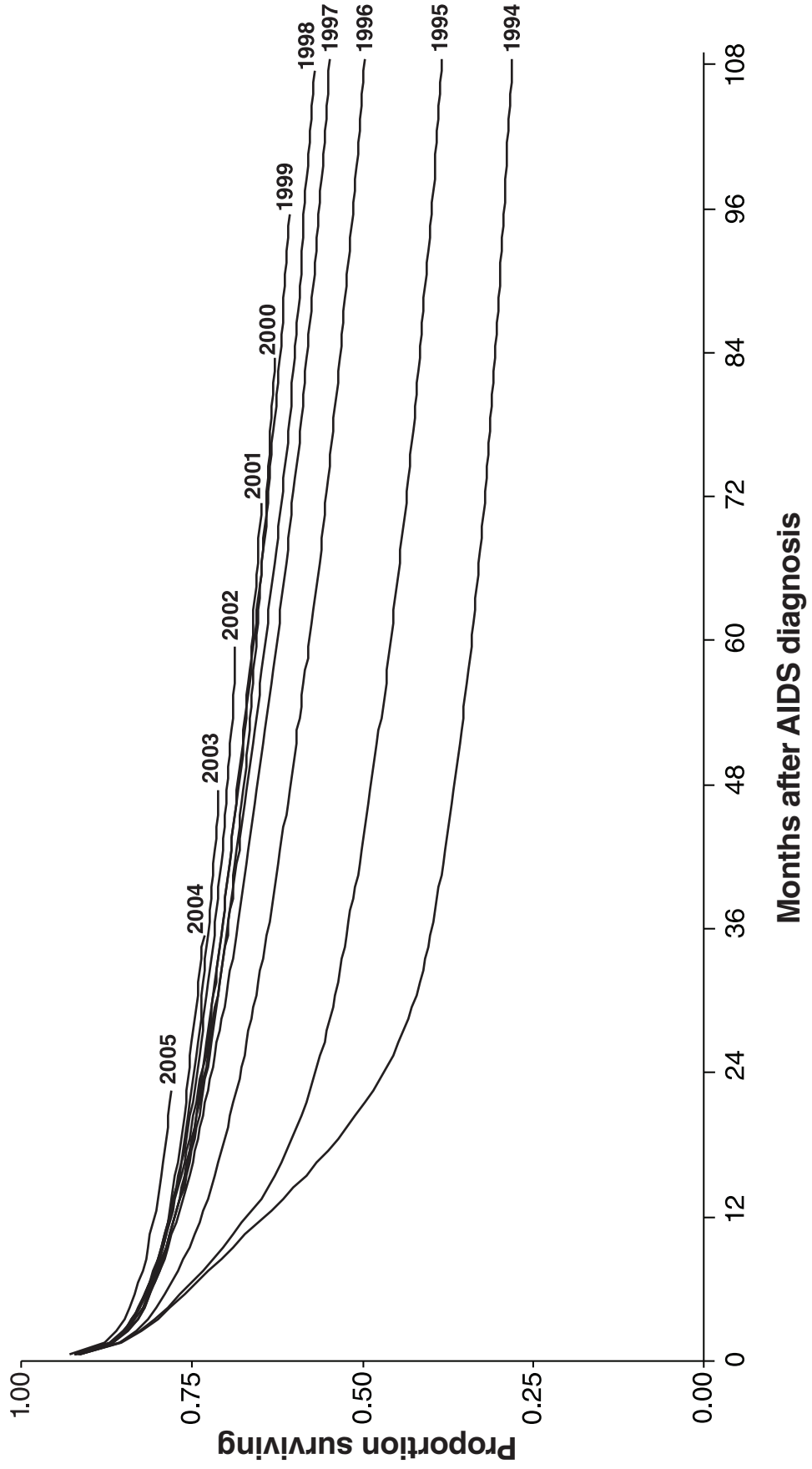


Fig 1b. Proportion of persons surviving, by months after AIDS diagnosis by low CD4 only at the time of AIDS diagnosis, 1994-2005, United States and dependent areas

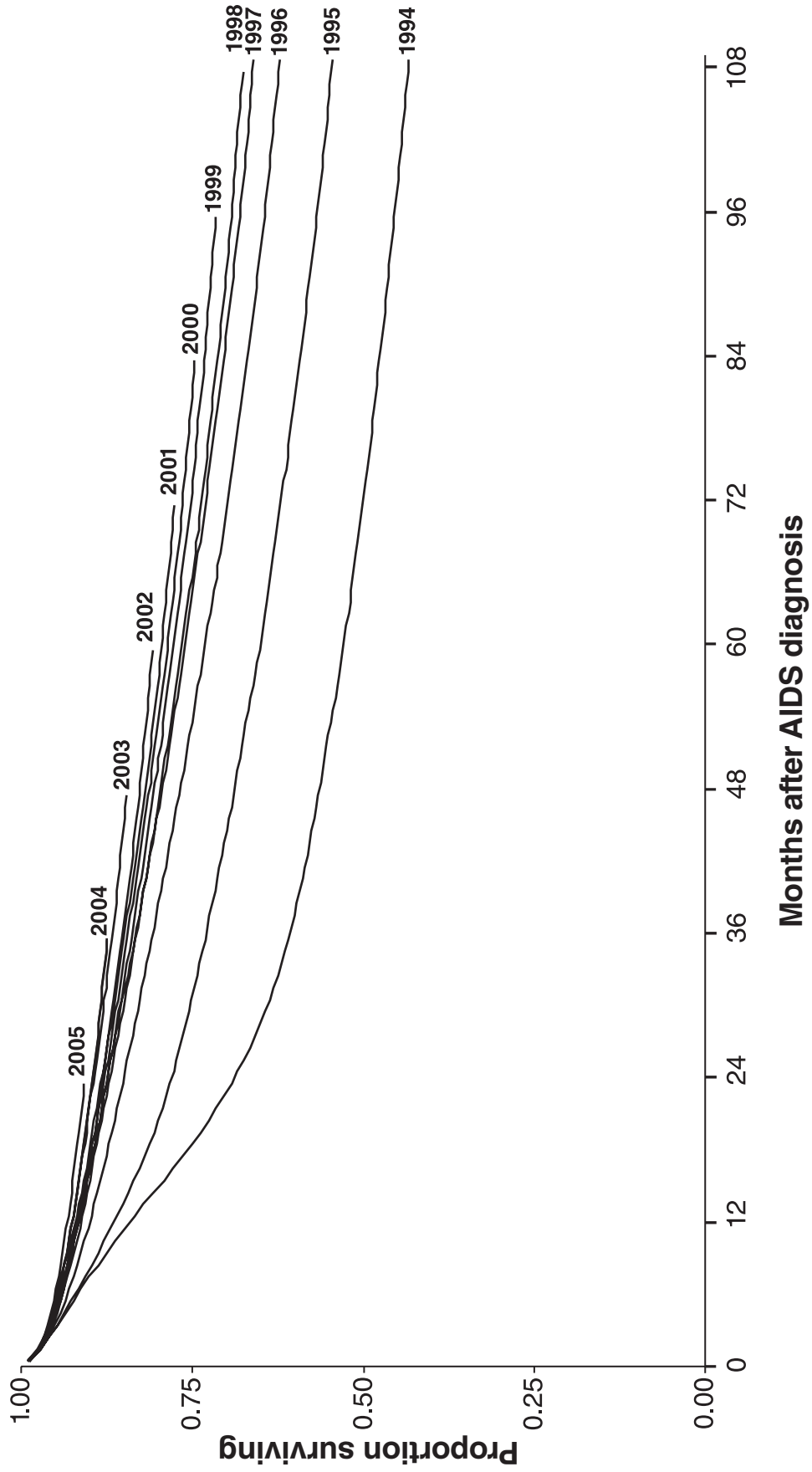


Fig 2. Proportion of persons surviving, by months after AIDS diagnosis by CD4 only or by an AIDS-defining opportunistic illness (OI) at the time of AIDS diagnosis, 1994-2005, United States and dependent areas

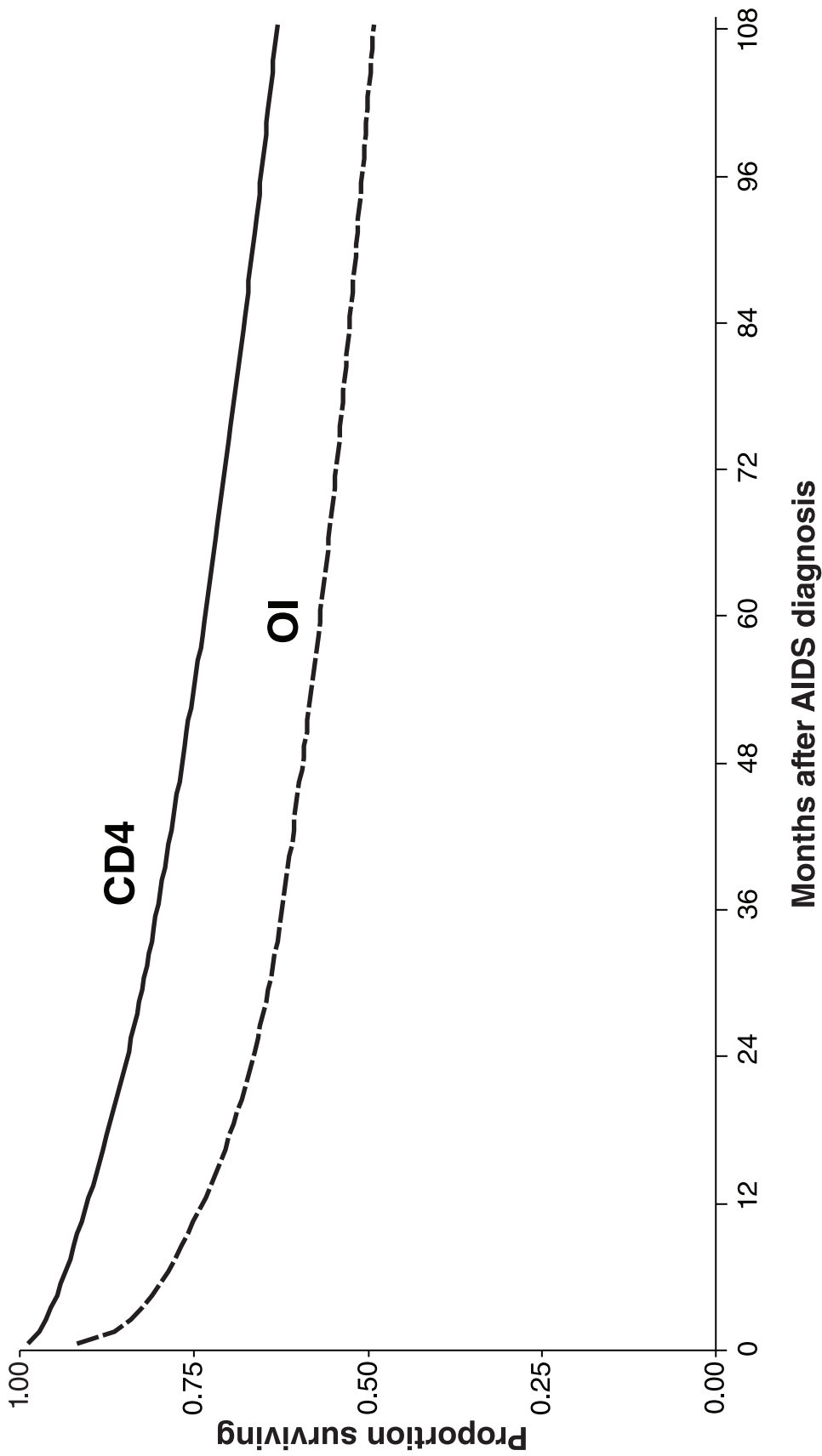


Table 1. Estimated numbers of AIDS cases through 2007, by age at diagnosis, and estimated numbers of persons living with AIDS at the end of 2006, by area of residence at AIDS diagnosis, United States and dependent areas

| Area of residence | AIDS cases through 2007, by age at diagnosis | | | Persons living with AIDS, by age at end of 2006 | | |
|----------------------|--|------------------------|--------------------|---|------------------------|--------------------|
| | Adults/ adolescents | Children <13 years old | Total ¹ | Adults/ adolescents | Children <13 years old | Total ² |
| Alabama | 9,149 | 76 | 9,225 | 3,830 | 11 | 3,841 |
| Alaska | 690 | 7 | 697 | 328 | 1 | 329 |
| Arizona | 11,030 | 46 | 11,076 | 4,714 | 7 | 4,721 |
| Arkansas | 4,127 | 36 | 4,163 | 2,155 | 6 | 2,161 |
| California | 152,016 | 681 | 152,698 | 62,740 | 106 | 62,846 |
| Colorado | 9,172 | 31 | 9,203 | 4,072 | 2 | 4,074 |
| Connecticut | 15,424 | 183 | 15,607 | 6,954 | 13 | 6,967 |
| Delaware | 3,772 | 27 | 3,799 | 1,763 | 7 | 1,770 |
| District of Columbia | 18,630 | 189 | 18,820 | 8,240 | 29 | 8,268 |
| Florida | 109,608 | 1,550 | 111,157 | 46,585 | 204 | 46,789 |
| Georgia | 34,825 | 244 | 35,068 | 17,217 | 49 | 17,266 |
| Hawaii | 3,093 | 17 | 3,110 | 1,259 | 3 | 1,262 |
| Idaho | 639 | 2 | 641 | 313 | 0 | 313 |
| Illinois | 35,851 | 286 | 36,136 | 16,084 | 47 | 16,131 |
| Indiana | 8,677 | 56 | 8,733 | 3,858 | 14 | 3,872 |
| Iowa | 1,819 | 13 | 1,832 | 859 | 3 | 862 |
| Kansas | 2,964 | 14 | 2,978 | 1,286 | 2 | 1,288 |
| Kentucky | 4,980 | 36 | 5,016 | 2,578 | 15 | 2,593 |
| Louisiana | 18,962 | 133 | 19,095 | 7,798 | 21 | 7,819 |
| Maine | 1,166 | 7 | 1,173 | 500 | 1 | 500 |
| Maryland | 32,521 | 320 | 32,841 | 14,740 | 41 | 14,781 |
| Massachusetts | 20,434 | 223 | 20,658 | 8,683 | 24 | 8,707 |
| Michigan | 15,814 | 114 | 15,928 | 6,673 | 12 | 6,685 |
| Minnesota | 5,065 | 28 | 5,093 | 2,336 | 9 | 2,345 |
| Mississippi | 7,063 | 56 | 7,119 | 3,206 | 13 | 3,219 |
| Missouri | 11,744 | 62 | 11,806 | 5,477 | 8 | 5,485 |
| Montana | 412 | 3 | 415 | 207 | 0 | 207 |
| Nebraska | 1,617 | 11 | 1,628 | 773 | 2 | 775 |
| Nevada | 6,152 | 29 | 6,181 | 2,885 | 3 | 2,888 |
| New Hampshire | 1,137 | 10 | 1,147 | 562 | 3 | 565 |
| New Jersey | 50,591 | 792 | 51,383 | 17,165 | 60 | 17,224 |
| New Mexico | 2,751 | 9 | 2,760 | 1,244 | 3 | 1,247 |
| New York | 182,426 | 2,350 | 184,776 | 72,019 | 154 | 72,174 |
| North Carolina | 17,508 | 123 | 17,631 | 8,101 | 13 | 8,114 |
| North Dakota | 153 | 2 | 155 | 72 | 1 | 73 |
| Ohio | 16,070 | 143 | 16,213 | 6,872 | 29 | 6,901 |
| Oklahoma | 5,123 | 26 | 5,149 | 2,116 | 3 | 2,119 |
| Oregon | 6,303 | 19 | 6,322 | 2,809 | 3 | 2,812 |

Data reported through June 30, 2008.

¹ Includes 1,393 persons whose area of residence at AIDS diagnosis is unknown and 3 persons who are residents of other areas; totals may not equal the sum of the rows or columns due to rounding.

² Includes 851 persons whose area of residence at AIDS diagnosis is unknown and 1 person who is a resident of another area; totals may not equal the sum of the rows or columns due to rounding.

Table 1. Estimated numbers of AIDS cases through 2007, by age at diagnosis, and estimated numbers of persons living with AIDS at the end of 2006, by area of residence at AIDS diagnosis, United States and dependent areas

| Area of residence | AIDS cases through 2007, by age at diagnosis | | | Persons living with AIDS, by age at end of 2006 | | |
|-----------------------------|--|------------------------|--------------------|---|------------------------|--------------------|
| | Adults/ adolescents | Children <13 years old | Total ¹ | Adults/ adolescents | Children <13 years old | Total ² |
| Pennsylvania | 35,957 | 370 | 36,327 | 17,730 | 71 | 17,801 |
| Rhode Island | 2,698 | 28 | 2,726 | 1,289 | 7 | 1,296 |
| South Carolina | 14,238 | 109 | 14,347 | 6,921 | 25 | 6,946 |
| South Dakota | 274 | 5 | 279 | 138 | 1 | 139 |
| Tennessee | 13,257 | 59 | 13,316 | 6,444 | 11 | 6,455 |
| Texas | 73,706 | 395 | 74,101 | 32,846 | 53 | 32,899 |
| Utah | 2,381 | 20 | 2,401 | 1,164 | 0 | 1,164 |
| Vermont | 473 | 6 | 479 | 237 | 2 | 239 |
| Virginia | 17,851 | 179 | 18,030 | 8,408 | 24 | 8,432 |
| Washington | 12,314 | 35 | 12,349 | 5,384 | 5 | 5,389 |
| West Virginia | 1,588 | 12 | 1,600 | 743 | 6 | 749 |
| Wisconsin | 4,759 | 33 | 4,792 | 2,161 | 12 | 2,173 |
| Wyoming | 245 | 2 | 247 | 102 | 1 | 103 |
| Subtotal | 1,009,219 | 9,209 | 1,018,428 | 432,641 | 1,142 | 433,783 |
| U.S. dependent areas | | | | | | |
| American Samoa | 1 | 0 | 1 | 1 | 0 | 1 |
| Guam | 74 | 1 | 75 | 36 | 0 | 36 |
| Northern Mariana Islands | 3 | 0 | 3 | 3 | 0 | 3 |
| Puerto Rico | 30,882 | 404 | 31,286 | 11,081 | 27 | 11,108 |
| Virgin Islands | 668 | 18 | 686 | 313 | 2 | 315 |
| Total | 1,042,230 | 9,645 | 1,051,875 | 444,920 | 1,178 | 446,098 |

Data reported through June 30, 2008.

¹ Includes 1,393 persons whose area of residence at AIDS diagnosis is unknown and 3 persons who are residents of other areas; totals may not equal the sum of the rows or columns due to rounding.

² Includes 851 persons whose area of residence at AIDS diagnosis is unknown and 1 person who is a resident of another area; totals may not equal the sum of the rows or columns due to rounding.

Table 2. Estimated numbers of deaths in persons with AIDS and death rates per 100,000 population in 2006, and cumulative deaths through December 2006, by age and area of residence at death, United States and dependent areas

| Area of residence | Deaths in 2006 by age at death | | | | Cumulative deaths through 2006 by age at death | | |
|----------------------|--------------------------------|------------------------|--------------------|------------------------|--|------------------------|--------------------|
| | Adults/ adolescents | Children <13 years old | Total ¹ | Death rate per 100,000 | Adults/ adolescents | Children <13 years old | Total ² |
| Alabama | 259 | 0 | 259 | 5.6 | 5,112 | 46 | 5,158 |
| Alaska | 14 | 0 | 14 | 2.1 | 319 | 3 | 322 |
| Arizona | 212 | 0 | 212 | 3.4 | 5,702 | 29 | 5,731 |
| Arkansas | 79 | 0 | 79 | 2.8 | 1,885 | 15 | 1,900 |
| California | 1,279 | 0 | 1,279 | 3.5 | 82,303 | 341 | 82,644 |
| Colorado | 131 | 0 | 131 | 2.8 | 4,763 | 19 | 4,782 |
| Connecticut | 289 | 3 | 292 | 8.3 | 8,198 | 101 | 8,299 |
| Delaware | 78 | 0 | 78 | 9.2 | 1,890 | 12 | 1,902 |
| District of Columbia | 323 | 1 | 324 | 55.3 | 10,752 | 129 | 10,881 |
| Florida | 2,538 | 3 | 2,541 | 14.1 | 57,985 | 788 | 58,774 |
| Georgia | 495 | 1 | 496 | 5.3 | 16,914 | 114 | 17,028 |
| Hawaii | 34 | 0 | 34 | 2.7 | 1,741 | 8 | 1,749 |
| Idaho | 8 | 0 | 8 | 0.5 | 362 | 2 | 364 |
| Illinois | 401 | 0 | 401 | 3.1 | 18,484 | 135 | 18,619 |
| Indiana | 191 | 0 | 191 | 3.0 | 4,647 | 21 | 4,668 |
| Iowa | 27 | 0 | 27 | 0.9 | 1,037 | 4 | 1,041 |
| Kansas | 47 | 0 | 47 | 1.7 | 1,618 | 6 | 1,624 |
| Kentucky | 38 | 0 | 38 | 0.9 | 2,333 | 9 | 2,342 |
| Louisiana | 468 | 1 | 469 | 11.1 | 10,345 | 67 | 10,412 |
| Maine | 18 | 1 | 19 | 1.4 | 741 | 3 | 744 |
| Maryland | 451 | 0 | 451 | 8.1 | 15,608 | 122 | 15,730 |
| Massachusetts | 364 | 0 | 364 | 5.7 | 10,955 | 118 | 11,073 |
| Michigan | 201 | 0 | 201 | 2.0 | 8,765 | 70 | 8,835 |
| Minnesota | 87 | 0 | 87 | 1.7 | 2,668 | 13 | 2,681 |
| Mississippi | 196 | 0 | 196 | 6.8 | 3,758 | 28 | 3,786 |
| Missouri | 170 | 0 | 170 | 2.9 | 6,070 | 38 | 6,108 |
| Montana | 10 | 0 | 10 | 1.1 | 233 | 4 | 237 |
| Nebraska | 34 | 0 | 34 | 1.9 | 845 | 7 | 852 |
| Nevada | 93 | 0 | 93 | 3.7 | 2,861 | 18 | 2,879 |
| New Hampshire | 19 | 0 | 19 | 1.4 | 558 | 3 | 561 |
| New Jersey | 807 | 1 | 809 | 9.3 | 31,692 | 426 | 32,117 |
| New Mexico | 51 | 0 | 51 | 2.6 | 1,444 | 1 | 1,445 |
| New York | 2,205 | 2 | 2,208 | 11.4 | 104,507 | 1,405 | 105,912 |
| North Carolina | 382 | 0 | 382 | 4.3 | 8,783 | 74 | 8,857 |
| North Dakota | 2 | 0 | 2 | --- | 117 | 0 | 117 |

Note. These numbers do not represent reported case counts. Rather, these numbers are point estimates, which result from adjustments of reported case counts.

The reported case counts have been adjusted for reporting delays, but not for incomplete reporting.

¹ Includes 16 persons whose area of residence at death and AIDS diagnosis is a foreign country or unknown; totals may not equal the sum of the rows or columns due to rounding.

² Includes 456 persons whose area of residence at death and AIDS diagnosis is a foreign country or unknown; totals may not equal the sum of the rows or columns due to rounding.

--- Rates based on fewer than five events in the numerator are not presented since rates based on small numbers are likely to be unstable.

Table 2. Estimated numbers of deaths in persons with AIDS and death rates per 100,000 population in 2006, and cumulative deaths through December 2006, by age and area of residence at death, United States and dependent areas

| Area of residence | Deaths in 2006 by age at death | | | | Cumulative deaths through 2006 by age at death | | |
|-----------------------------|--------------------------------|------------------------|--------------------|------------------------|--|------------------------|--------------------|
| | Adults/ adolescents | Children <13 years old | Total ¹ | Death rate per 100,000 | Adults/ adolescents | Children <13 years old | Total ² |
| Ohio | 284 | 1 | 285 | 2.5 | 9,252 | 82 | 9,334 |
| Oklahoma | 77 | 0 | 77 | 2.2 | 2,885 | 16 | 2,901 |
| Oregon | 98 | 0 | 98 | 2.6 | 3,510 | 8 | 3,518 |
| Pennsylvania | 350 | 1 | 351 | 2.8 | 17,613 | 165 | 17,778 |
| Rhode Island | 30 | 0 | 30 | 2.8 | 1,384 | 13 | 1,397 |
| South Carolina | 228 | 0 | 228 | 5.3 | 6,915 | 51 | 6,966 |
| South Dakota | 9 | 0 | 9 | 1.1 | 184 | 2 | 186 |
| Tennessee | 288 | 0 | 288 | 4.7 | 6,573 | 34 | 6,607 |
| Texas | 1,076 | 0 | 1,076 | 4.6 | 38,093 | 218 | 38,311 |
| Utah | 34 | 0 | 34 | 1.3 | 1,171 | 13 | 1,184 |
| Vermont | 7 | 0 | 7 | 1.2 | 269 | 4 | 273 |
| Virginia | 249 | 0 | 249 | 3.3 | 8,700 | 61 | 8,761 |
| Washington | 158 | 0 | 158 | 2.5 | 6,382 | 15 | 6,397 |
| West Virginia | 24 | 0 | 24 | 1.3 | 910 | 5 | 915 |
| Wisconsin | 63 | 0 | 63 | 1.1 | 2,638 | 16 | 2,654 |
| Wyoming | 4 | 0 | 4 | --- | 128 | 0 | 128 |
| Subtotal | 14,980 | 17 | 14,997 | 5.0 | 542,602 | 4,883 | 547,484 |
| U.S. dependent areas | | | | | | | |
| American Samoa | 1 | 0 | 1 | --- | 3 | 0 | 3 |
| Guam | 2 | 0 | 2 | --- | 44 | 1 | 45 |
| Northern Mariana Islands | 0 | 0 | 0 | --- | 0 | 0 | 0 |
| Puerto Rico | 538 | 0 | 538 | 13.6 | 20,218 | 226 | 20,445 |
| Virgin Islands | 10 | 0 | 10 | 8.9 | 296 | 8 | 304 |
| Total | 15,548 | 17 | 15,564 | 5.2 | 563,611 | 5,126 | 568,737 |

Note. These numbers do not represent reported case counts. Rather, these numbers are point estimates, which result from adjustments of reported case counts.

The reported case counts have been adjusted for reporting delays, but not for incomplete reporting.

¹ Includes 16 persons whose area of residence at death and AIDS diagnosis is a foreign country or unknown; totals may not equal the sum of the rows or columns due to rounding.

² Includes 456 persons whose area of residence at death and AIDS diagnosis is a foreign country or unknown; totals may not equal the sum of the rows or columns due to rounding.

--- Rates based on fewer than five events in the numerator are not presented since rates based on small numbers are likely to be unstable.

Table 3. Estimated numbers of deaths in adults/adolescents with AIDS and death rates per 100,000 population in 2006, and cumulative deaths through December 2006, by region of residence at death and race/ethnicity, United States and dependent areas

| Region of residence | Race/ethnicity | Deaths in 2006 ¹ | Death rate per 100,000 | Cumulative deaths through 2006 ² |
|-----------------------------------|--|-----------------------------|------------------------|---|
| Northeast | American Indian/Alaska Native | 1 | --- | 107 |
| | Asian ^a | 27 | 1.2 | 630 |
| | Black/African American | 1,921 | 39.1 | 76,606 |
| | Hispanic/Latino ^b | 1,071 | 22.7 | 39,995 |
| | Native Hawaiian/Other Pacific Islander | 0 | --- | 0 |
| | White | 916 | 2.7 | 57,242 |
| Midwest | American Indian/Alaska Native | 8 | 2.7 | 231 |
| | Asian ^a | 10 | 0.8 | 108 |
| | Black/African American | 754 | 14.3 | 21,469 |
| | Hispanic/Latino ^b | 105 | 3.7 | 3,207 |
| | Native Hawaiian/Other Pacific Islander | 0 | --- | 7 |
| | White | 612 | 1.4 | 31,042 |
| South | American Indian/Alaska Native | 22 | 3.9 | 431 |
| | Asian ^a | 14 | 0.6 | 275 |
| | Black/African American | 4,783 | 29.3 | 102,134 |
| | Hispanic/Latino ^b | 606 | 5.3 | 17,062 |
| | Native Hawaiian/Other Pacific Islander | 0 | --- | 4 |
| | White | 1,724 | 3.0 | 78,695 |
| West | American Indian/Alaska Native | 47 | 5.7 | 934 |
| | Asian ^a | 48 | 1.0 | 1,978 |
| | Black/ African American | 417 | 16.0 | 16,386 |
| | Hispanic/Latino ^b | 445 | 3.2 | 18,139 |
| | Native Hawaiian/Other Pacific Islander | 4 | --- | 265 |
| | White | 1,141 | 3.5 | 72,835 |
| U.S. dependent areas ³ | American Indian/Alaska Native | 0 | --- | 0 |
| | Asian ^a | 1 | --- | 31 |
| | Black/ African American | 4 | --- | 231 |
| | Hispanic/Latino ^b | 534 | --- | 20,159 |
| | Native Hawaiian/Other Pacific Islander | 1 | --- | 3 |
| | White | 4 | --- | 108 |
| Total | | 15,504 | 6.3 | 563,113 |

Note. These numbers do not represent reported case counts. Rather, these numbers are point estimates, which result from adjustments of reported case counts.

The reported case counts have been adjusted for reporting delays, but not for incomplete reporting.

^a Includes Asian/Pacific Islander legacy cases (see Technical Notes).

^b Hispanics/Latinos can be of any race.

¹ Includes 16 persons whose area of residence at death is a foreign country or unknown and 268 persons whose race/ethnicity is unknown or who are of multiple races.

² Includes 448 persons whose area of residence at death is a foreign country or unknown and 2,347 persons whose race/ethnicity is unknown or who are of multiple races.

³ Rates are not presented because race-specific denominators are not available for U.S. dependent areas.

--- Rates based on fewer than five events in the numerator are not presented since rates based on small numbers are likely to be unstable.

Table 4. Estimated numbers of deaths in adults/adolescents with AIDS, by sex, transmission category, and region of residence at death¹, for deaths in 2006, and cumulative deaths through December 2006, United States and dependent areas

| Region of residence | Transmission category | Male | | | Female | | |
|----------------------|--|----------------|---------------------|------|----------------|---------------------|------|
| | | Deaths in 2006 | Deaths through 2006 | (%) | Deaths in 2006 | Deaths through 2006 | (%) |
| Northeast | Male-to-male sexual contact | 906 | 56,947 | (42) | --- | --- | --- |
| | Injection drug use | 1,330 | 61,982 | (45) | 673 | 23,898 | (61) |
| | Male-to-male sexual contact and injection drug use | 203 | 8,996 | (7) | --- | --- | --- |
| | High-risk heterosexual contact ² | 360 | 6,457 | (5) | 560 | 14,565 | (37) |
| | Receipt of blood, blood components, or tissue ³ | 19 | 1,856 | (1) | 15 | 934 | (2) |
| | Other ⁴ | 7 | 41 | (0) | 3 | 37 | (0) |
| Midwest | Male-to-male sexual contact | 748 | 34,185 | (69) | --- | --- | --- |
| | Injection drug use | 199 | 7,641 | (15) | 124 | 3,340 | (49) |
| | Male-to-male sexual contact and injection drug use | 163 | 4,642 | (9) | --- | --- | --- |
| | High-risk heterosexual contact ² | 85 | 1,560 | (3) | 172 | 3,126 | (46) |
| | Receipt of blood, blood components, or tissue ³ | 17 | 1,412 | (3) | 3 | 367 | (5) |
| | Other ⁴ | 0 | 4 | (0) | 0 | 5 | (0) |
| South | Male-to-male sexual contact | 2,477 | 98,712 | (60) | --- | --- | --- |
| | Injection drug use | 1,053 | 30,684 | (19) | 654 | 14,325 | (40) |
| | Male-to-male sexual contact and injection drug use | 489 | 15,781 | (10) | --- | --- | --- |
| | High-risk heterosexual contact ² | 1,033 | 14,663 | (9) | 1,447 | 20,067 | (56) |
| | Receipt of blood, blood components, or tissue ³ | 40 | 3,379 | (2) | 31 | 1,597 | (4) |
| | Other ⁴ | 4 | 24 | (0) | 4 | 48 | (0) |
| West | Male-to-male sexual contact | 1,203 | 78,582 | (76) | --- | --- | --- |
| | Injection drug use | 234 | 8,942 | (9) | 142 | 3,537 | (46) |
| | Male-to-male sexual contact and injection drug use | 300 | 11,949 | (12) | --- | --- | --- |
| | High-risk heterosexual contact ² | 70 | 1,694 | (2) | 144 | 3,355 | (43) |
| | Receipt of blood, blood components, or tissue ³ | 13 | 1,920 | (2) | 16 | 855 | (11) |
| | Other ⁴ | 0 | 5 | (0) | 3 | 17 | (0) |
| U.S. dependent areas | Male-to-male sexual contact | 78 | 3,387 | (21) | --- | --- | --- |
| | Injection drug use | 207 | 9,005 | (56) | 58 | 1,820 | (41) |
| | Male-to-male sexual contact and injection drug use | 51 | 1,732 | (11) | --- | --- | --- |
| | High-risk heterosexual contact ² | 63 | 1,874 | (12) | 80 | 2,483 | (56) |
| | Receipt of blood, blood components, or tissue ³ | 2 | 122 | (1) | 2 | 105 | (2) |
| | Other ⁴ | 2 | 4 | (0) | 1 | 3 | (0) |

Note. These numbers do not represent reported case counts. Rather, these numbers are point estimates, which result from adjustments of reported case counts.

The reported case counts have been adjusted for reporting delays and missing risk factor information, but not for incomplete reporting.

¹ Excludes 363 men and 86 women whose region of residence at death and AIDS diagnosis is unknown.

² Heterosexual contact with a person known to have, or to be at high risk for, HIV infection.

³ Includes hemophilia/coagulation disorder, blood transfusion, blood components, or tissue.

⁴ Includes perinatal exposure, and risk factor not reported or not identified.

Table 5. Estimated numbers of deaths in adults/adolescents with AIDS, by sex, race/ethnicity, and transmission category, for deaths in 2006 and cumulative deaths through December 2006, United States and dependent areas

| Race/ethnicity | Transmission category | Male | | Female | |
|--|--|----------------|---------------------|----------------|---------------------|
| | | Deaths in 2006 | Deaths through 2006 | Deaths in 2006 | Deaths through 2006 |
| American Indian/ Alaskan Native | Male-to-male sexual contact | 34 | 824 | --- | --- |
| | Injection drug use | 16 | 233 | 11 | 167 |
| | Male-to-male sexual contact and injection drug use | 7 | 266 | --- | --- |
| | High-risk heterosexual contact ¹ | 1 | 45 | 7 | 129 |
| | Receipt of blood, blood components, or tissue ² | 1 | 24 | 0 | 14 |
| | Other ³ | 0 | 0 | 0 | 0 |
| | Total | 60 | 1,392 | 18 | 310 |
| Asian^a | Male-to-male sexual contact | 58 | 2,156 | --- | --- |
| | Injection drug use | 8 | 191 | 1 | 51 |
| | Male-to-male sexual contact and injection drug use | 5 | 123 | --- | --- |
| | High-risk heterosexual contact ¹ | 9 | 118 | 13 | 163 |
| | Receipt of blood, blood components, or tissue ² | 3 | 138 | 4 | 89 |
| | Other ³ | 0 | 0 | 0 | 0 |
| | Total | 82 | 2,725 | 17 | 303 |
| Black/ African American | Male-to-male sexual contact | 1,962 | 64,747 | --- | --- |
| | Injection drug use | 1,594 | 62,651 | 959 | 28,241 |
| | Male-to-male sexual contact and injection drug use | 461 | 14,911 | --- | --- |
| | High-risk heterosexual contact ¹ | 1,131 | 16,918 | 1,694 | 26,516 |
| | Receipt of blood, blood components, or tissue ² | 31 | 1,559 | 32 | 1,335 |
| | Other ³ | 7 | 51 | 8 | 58 |
| | Total | 5,186 | 160,836 | 2,693 | 56,150 |
| Hispanic/Latino^b | Male-to-male sexual contact | 831 | 35,415 | --- | --- |
| | Injection drug use | 815 | 32,692 | 317 | 8,645 |
| | Male-to-male sexual contact and injection drug use | 202 | 6,923 | --- | --- |
| | High-risk heterosexual contact ¹ | 257 | 5,018 | 323 | 8,566 |
| | Receipt of blood, blood components, or tissue ² | 7 | 891 | 15 | 542 |
| | Other ³ | 6 | 13 | 1 | 19 |
| | Total | 2,118 | 80,953 | 656 | 17,773 |

Note. These numbers do not represent reported case counts. Rather, these numbers are point estimates, which result from adjustments of reported case counts.

The reported case counts have been adjusted for reporting delays and missing risk factor information, but not for incomplete reporting. Columns may not sum to totals due to rounding.

^a Includes Asian/Pacific Islander legacy cases (see Technical Notes).

^b Hispanics/Latinos can be of any race.

¹ Heterosexual contact with a person known to have, or to be at high risk for, HIV infection.

² Includes hemophilia/coagulation disorder, blood transfusion, blood components, or tissue.

³ Includes perinatal exposure, and risk factor not reported or identified.

Table 5. Estimated numbers of deaths in adults/adolescents with AIDS, by sex, race/ethnicity, and transmission category, for deaths in 2006 and cumulative deaths through December 2006, United States and dependent areas

| Race/ethnicity | Transmission category | Male | | Female | |
|--|--|----------------|---------------------|----------------|---------------------|
| | | Deaths in 2006 | Deaths through 2006 | Deaths in 2006 | Deaths through 2006 |
| Native Hawaiian/ Other Pacific Islander | Male-to-male sexual contact | 2 | 195 | --- | --- |
| | Injection drug use | 0 | 16 | 0 | 10 |
| | Male-to-male sexual contact and injection drug use | 0 | 15 | --- | --- |
| | High-risk heterosexual contact ¹ | 1 | 8 | 1 | 24 |
| | Receipt of blood, blood components, or tissue ² | 0 | 8 | 0 | 5 |
| | Other ³ | 0 | 0 | 0 | 0 |
| | Total | 4 | 242 | 1 | 39 |
| White | Male-to-male sexual contact | 2,453 | 167,844 | --- | --- |
| | Injection drug use | 526 | 21,971 | 326 | 9,536 |
| | Male-to-male sexual contact and injection drug use | 511 | 20,723 | --- | --- |
| | High-risk heterosexual contact ¹ | 190 | 4,034 | 328 | 7,995 |
| | Receipt of blood, blood components, or tissue ² | 49 | 6,035 | 16 | 1,856 |
| | Other ³ | 0 | 14 | 2 | 30 |
| | Total | 3,728 | 220,622 | 672 | 19,417 |

Note. These numbers do not represent reported case counts. Rather, these numbers are point estimates, which result from adjustments of reported case counts.

The reported case counts have been adjusted for reporting delays and missing risk factor information, but not for incomplete reporting. Columns may not sum to totals due to rounding.

^a Includes Asian/Pacific Islander legacy cases (see Technical Notes).

^b Hispanics/Latinos can be of any race.

¹ Heterosexual contact with a person known to have, or to be at high risk for, HIV infection.

² Includes hemophilia/coagulation disorder, blood transfusion, blood components, or tissue.

³ Includes perinatal exposure, and risk factor not reported or identified.

Table 6. Estimated numbers of deaths in persons with AIDS and death rates per 100,000 population for 2006, and cumulative deaths through December 2006, by race/ethnicity, sex, and age at death, United States and dependent areas

| Race/ethnicity | Age at death (years) | Male | | Female | | Cumulative deaths through 2006 |
|------------------------------------|----------------------|----------------|------------------|----------------|------------------|--------------------------------|
| | | Deaths in 2006 | Rate per 100,000 | Deaths in 2006 | Rate per 100,000 | |
| American Indian/ Alaskan Native | <13 | 0 | --- | 0 | --- | 19 |
| | 13-14 | 0 | --- | 0 | --- | 0 |
| | 15-19 | 0 | --- | 0 | --- | 3 |
| | 20-24 | 0 | --- | 0 | --- | 27 |
| | 25-29 | 1 | --- | 1 | --- | 159 |
| | 30-34 | 4 | --- | 2 | --- | 353 |
| | 35-39 | 15 | 19.7 | 6 | 7.6 | 379 |
| | 40-44 | 16 | 19.9 | 3 | --- | 353 |
| | 45-49 | 10 | 12.6 | 3 | --- | 209 |
| | 50-54 | 8 | 12.1 | 1 | --- | 108 |
| | 55-59 | 2 | --- | 1 | --- | 49 |
| | 60-64 | 2 | --- | 0 | --- | 38 |
| | 65+ | 1 | --- | 1 | --- | 26 |
| | All ages | 60 | 5.4 | 18 | 1.6 | 1,722 |
| Asian ^a | <13 | 0 | --- | 0 | --- | 29 |
| | 13-14 | 0 | --- | 0 | --- | 1 |
| | 15-19 | 0 | --- | 0 | --- | 7 |
| | 20-24 | 0 | --- | 1 | --- | 29 |
| | 25-29 | 1 | --- | 0 | --- | 208 |
| | 30-34 | 2 | --- | 0 | --- | 467 |
| | 35-39 | 11 | 1.9 | 1 | --- | 648 |
| | 40-44 | 18 | 3.6 | 2 | --- | 592 |
| | 45-49 | 18 | 3.9 | 2 | --- | 438 |
| | 50-54 | 12 | 3.1 | 2 | --- | 271 |
| | 55-59 | 8 | 2.4 | 2 | --- | 159 |
| | 60-64 | 4 | --- | 1 | --- | 97 |
| | 65+ | 8 | 1.7 | 5 | 0.7 | 113 |
| | All ages | 82 | 1.3 | 17 | 0.3 | 3,059 |

Note. These numbers do not represent reported case counts. Rather, these numbers are point estimates, which result from adjustments of reported case counts.

The reported case counts have been adjusted for reporting delays, but not for incomplete reporting. Columns may not sum to totals due to rounding.

^a Includes Asian/Pacific Islander legacy cases (see Technical Notes).

^b Hispanics/Latinos can be of any race.

¹ Includes 2,380 persons whose race/ethnicity is unknown or who are of multiple races.

--- Rates based on fewer than five events in the numerator are not presented since rates based on small numbers are likely to be unstable.

Table 6. Estimated numbers of deaths in persons with AIDS and death rates per 100,000 population for 2006, and cumulative deaths through December 2006, by race/ethnicity, sex, and age at death, United States and dependent areas

| Race/ethnicity | Age at death (years) | Male | | Female | | Cumulative deaths through 2006 |
|------------------------------|----------------------|----------------|------------------|----------------|------------------|--------------------------------|
| | | Deaths in 2006 | Rate per 100,000 | Deaths in 2006 | Rate per 100,000 | |
| Black/African American | <13 | 6 | 0.2 | 5 | 0.1 | 2,921 |
| | 13-14 | 1 | --- | 2 | --- | 125 |
| | 15-19 | 14 | 0.9 | 17 | 1.1 | 539 |
| | 20-24 | 66 | 4.5 | 46 | 3.2 | 4,334 |
| | 25-29 | 155 | 11.7 | 137 | 9.8 | 17,572 |
| | 30-34 | 269 | 22.8 | 242 | 18.6 | 35,782 |
| | 35-39 | 581 | 47.4 | 388 | 28.1 | 45,041 |
| | 40-44 | 927 | 71.9 | 520 | 35.5 | 42,434 |
| | 45-49 | 1,052 | 84.3 | 548 | 38.2 | 30,237 |
| | 50-54 | 933 | 90.2 | 372 | 30.3 | 18,779 |
| | 55-59 | 588 | 70.7 | 213 | 21.1 | 10,398 |
| | 60-64 | 281 | 51.9 | 103 | 14.8 | 5,920 |
| | 65+ | 325 | 27.5 | 117 | 6.2 | 6,063 |
| | All ages | 5,199 | 29.8 | 2,709 | 14.1 | 220,144 |
| Hispanic/Latino ^b | <13 | 1 | --- | 1 | --- | 1,214 |
| | 13-14 | 2 | --- | 1 | --- | 58 |
| | 15-19 | 7 | 0.4 | 8 | 0.5 | 230 |
| | 20-24 | 22 | 1.1 | 14 | 0.8 | 1,935 |
| | 25-29 | 63 | 2.8 | 20 | 1.1 | 9,170 |
| | 30-34 | 146 | 6.9 | 44 | 2.5 | 18,755 |
| | 35-39 | 285 | 15.2 | 95 | 5.8 | 21,866 |
| | 40-44 | 392 | 24.0 | 160 | 10.8 | 18,294 |
| | 45-49 | 429 | 32.9 | 113 | 9.1 | 12,339 |
| | 50-54 | 333 | 34.2 | 95 | 9.7 | 7,255 |
| | 55-59 | 198 | 27.3 | 52 | 6.8 | 4,180 |
| | 60-64 | 123 | 25.2 | 26 | 4.7 | 2,375 |
| | 65+ | 125 | 12.3 | 36 | 2.6 | 2,383 |
| | All ages | 2,126 | 9.3 | 667 | 3.1 | 100,053 |

Note. These numbers do not represent reported case counts. Rather, these numbers are point estimates, which result from adjustments of reported case counts.

The reported case counts have been adjusted for reporting delays, but not for incomplete reporting. Columns may not sum to totals due to rounding.

^a Includes Asian/Pacific Islander legacy cases (see Technical Notes).

^b Hispanics/Latinos can be of any race.

¹ Includes 2,380 persons whose race/ethnicity is unknown or who are of multiple races.

--- Rates based on fewer than five events in the numerator are not presented since rates based on small numbers are likely to be unstable.

Table 6. Estimated numbers of deaths in persons with AIDS and death rates per 100,000 population for 2006, and cumulative deaths through December 2006, by race/ethnicity, sex, and age at death, United States and dependent areas

| Race/ethnicity | Age at death (years) | Male | | Female | | Cumulative deaths through 2006 |
|--|----------------------|----------------|------------------|----------------|------------------|--------------------------------|
| | | Deaths in 2006 | Rate per 100,000 | Deaths in 2006 | Rate per 100,000 | |
| Native Hawaiian/ Other Pacific Islander | <13 | 0 | --- | 0 | --- | 2 |
| | 13-14 | 0 | --- | 0 | --- | 0 |
| | 15-19 | 0 | --- | 0 | --- | 3 |
| | 20-24 | 0 | --- | 0 | --- | 4 |
| | 25-29 | 1 | --- | 0 | --- | 28 |
| | 30-34 | 0 | --- | 0 | --- | 67 |
| | 35-39 | 0 | --- | 0 | --- | 64 |
| | 40-44 | 1 | --- | 1 | --- | 44 |
| | 45-49 | 0 | --- | 0 | --- | 27 |
| | 50-54 | 0 | --- | 0 | --- | 17 |
| | 55-59 | 0 | --- | 0 | --- | 14 |
| | 60-64 | 1 | --- | 0 | --- | 5 |
| | 65+ | 0 | --- | 0 | --- | 7 |
| | All ages | 4 | --- | 1 | --- | 283 |
| White | <13 | 3 | --- | 0 | --- | 916 |
| | 13-14 | 0 | --- | 0 | --- | 97 |
| | 15-19 | 1 | --- | 2 | --- | 365 |
| | 20-24 | 13 | 0.2 | 7 | 0.1 | 2,821 |
| | 25-29 | 51 | 0.8 | 17 | 0.3 | 18,476 |
| | 30-34 | 119 | 2.0 | 37 | 0.6 | 43,514 |
| | 35-39 | 376 | 5.6 | 98 | 1.5 | 53,234 |
| | 40-44 | 759 | 10.1 | 135 | 1.8 | 46,210 |
| | 45-49 | 846 | 10.5 | 144 | 1.8 | 32,149 |
| | 50-54 | 656 | 8.8 | 113 | 1.5 | 19,292 |
| | 55-59 | 422 | 6.2 | 59 | 0.8 | 11,121 |
| | 60-64 | 256 | 5.1 | 32 | 0.6 | 6,384 |
| | 65+ | 235 | 1.8 | 31 | 0.2 | 6,515 |
| | All ages | 3,737 | 3.8 | 674 | 0.7 | 241,095 |

Note. These numbers do not represent reported case counts. Rather, these numbers are point estimates, which result from adjustments of reported case counts.

The reported case counts have been adjusted for reporting delays, but not for incomplete reporting. Columns may not sum to totals due to rounding.

^a Includes Asian/Pacific Islander legacy cases (see Technical Notes).

^b Hispanics/Latinos can be of any race.

¹ Includes 2,380 persons whose race/ethnicity is unknown or who are of multiple races.

--- Rates based on fewer than five events in the numerator are not presented since rates based on small numbers are likely to be unstable.

Table 6. Estimated numbers of deaths in persons with AIDS and death rates per 100,000 population for 2006, and cumulative deaths through December 2006, by race/ethnicity, sex, and age at death, United States and dependent areas

| Race/ethnicity | Age at death (years) | Male | | Female | | Cumulative deaths through 2006 |
|--------------------|----------------------|----------------|------------------|----------------|------------------|--------------------------------|
| | | Deaths in 2006 | Rate per 100,000 | Deaths in 2006 | Rate per 100,000 | |
| Total ¹ | <13 | 10 | 0.0 | 7 | 0.0 | 5,126 |
| | 13-14 | 3 | --- | 3 | --- | 285 |
| | 15-19 | 23 | 0.2 | 27 | 0.3 | 1,152 |
| | 20-24 | 103 | 1.0 | 71 | 0.7 | 9,184 |
| | 25-29 | 273 | 2.6 | 177 | 1.8 | 45,754 |
| | 30-34 | 550 | 5.5 | 328 | 3.4 | 99,279 |
| | 35-39 | 1,287 | 12.1 | 603 | 5.7 | 121,686 |
| | 40-44 | 2,155 | 19.3 | 837 | 7.4 | 108,391 |
| | 45-49 | 2,397 | 21.3 | 822 | 7.1 | 75,754 |
| | 50-54 | 1,977 | 19.7 | 593 | 5.7 | 45,972 |
| | 55-59 | 1,237 | 14.0 | 335 | 3.6 | 26,046 |
| | 60-64 | 677 | 10.6 | 167 | 2.4 | 14,909 |
| | 65+ | 705 | 4.5 | 197 | 0.9 | 15,198 |
| | All ages | 11,396 | 7.7 | 4,168 | 2.7 | 568,737 |

Note. These numbers do not represent reported case counts. Rather, these numbers are point estimates, which result from adjustments of reported case counts.

The reported case counts have been adjusted for reporting delays, but not for incomplete reporting. Columns may not sum to totals due to rounding.

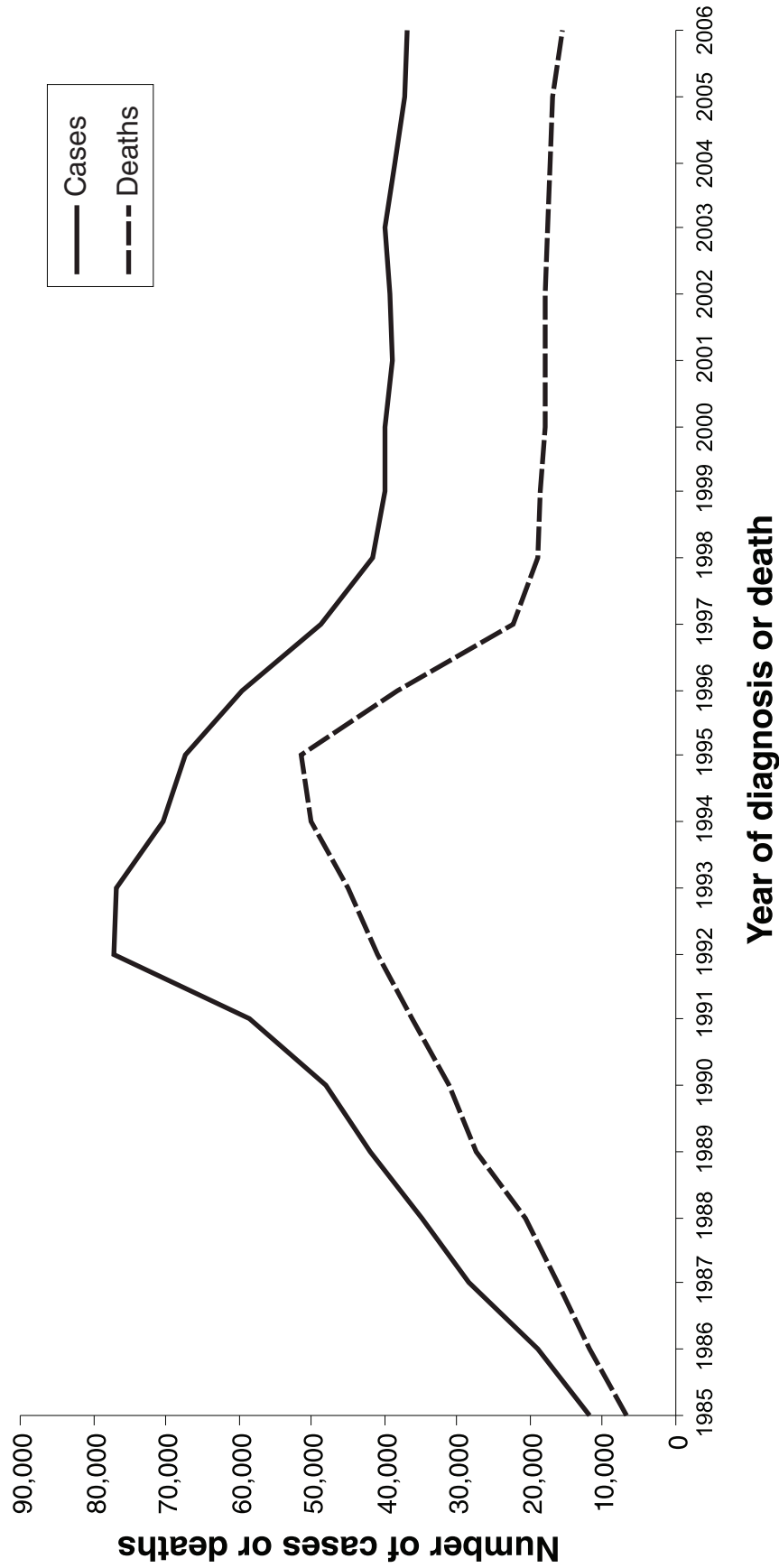
^a Includes Asian/Pacific Islander legacy cases (see Technical Notes).

^b Hispanics/Latinos can be of any race.

¹ Includes 2,380 persons whose race/ethnicity is unknown or who are of multiple races.

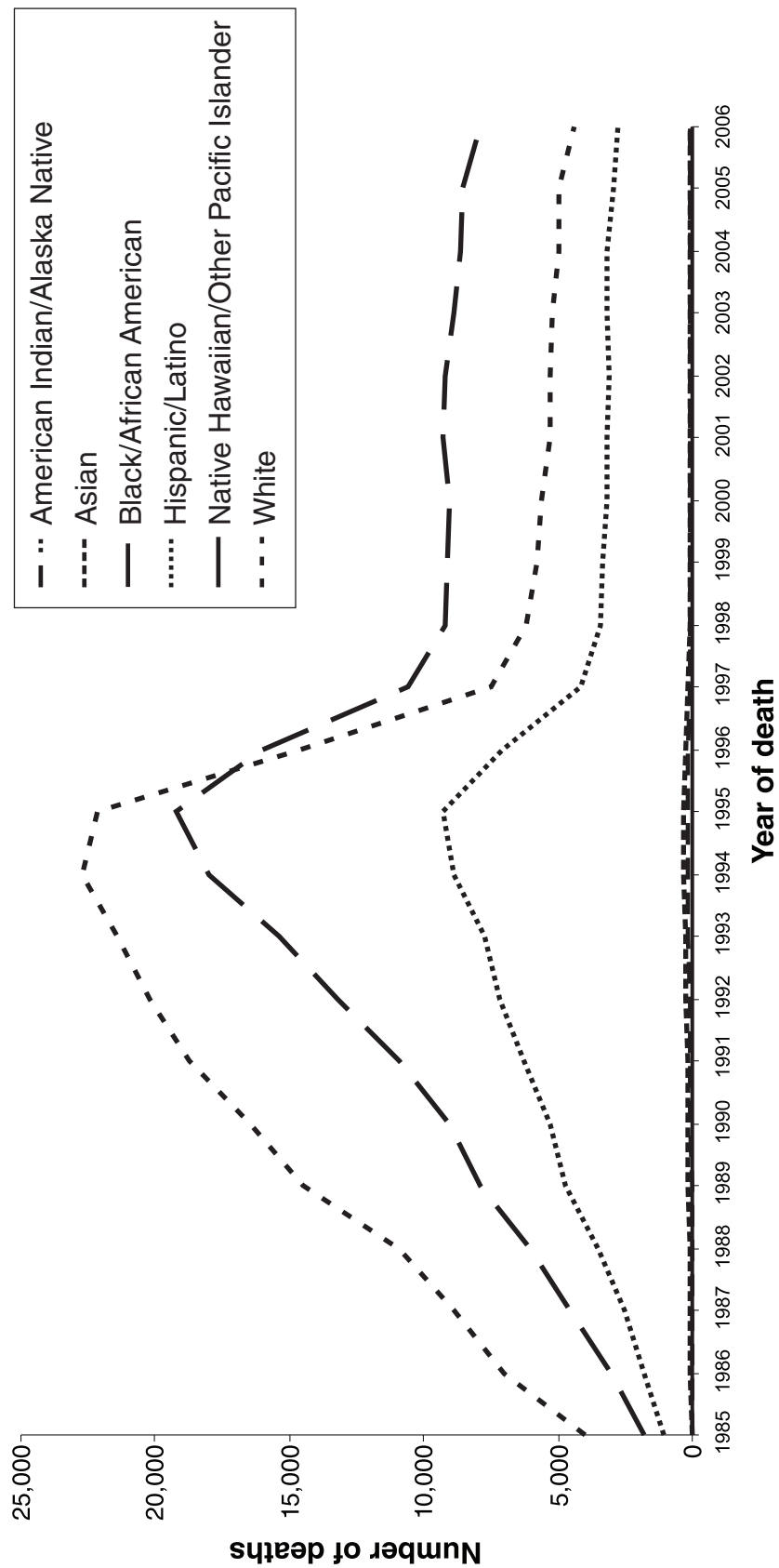
--- Rates based on fewer than five events in the numerator are not presented since rates based on small numbers are likely to be unstable.

Figure 3. Estimated cases and deaths among adults and adolescents with AIDS, by year of diagnosis or death, 1985-2006, United States and dependent areas



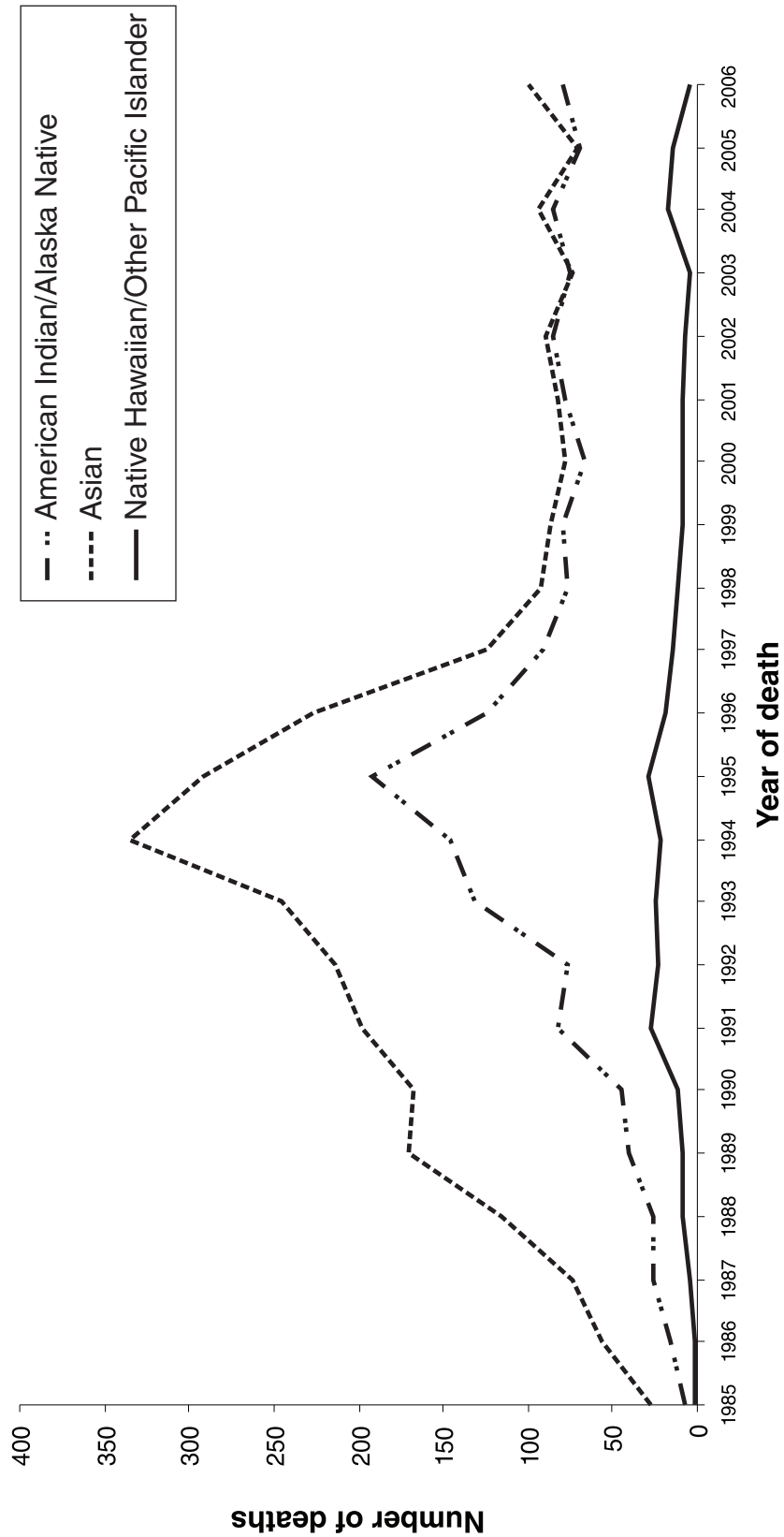
Note. Data have been adjusted for reporting delays of cases and deaths, but not for incomplete reporting.

Figure 4. Estimated deaths among adults and adolescents with AIDS, by race/ethnicity and year of death, 1985-2006, United States and dependent areas



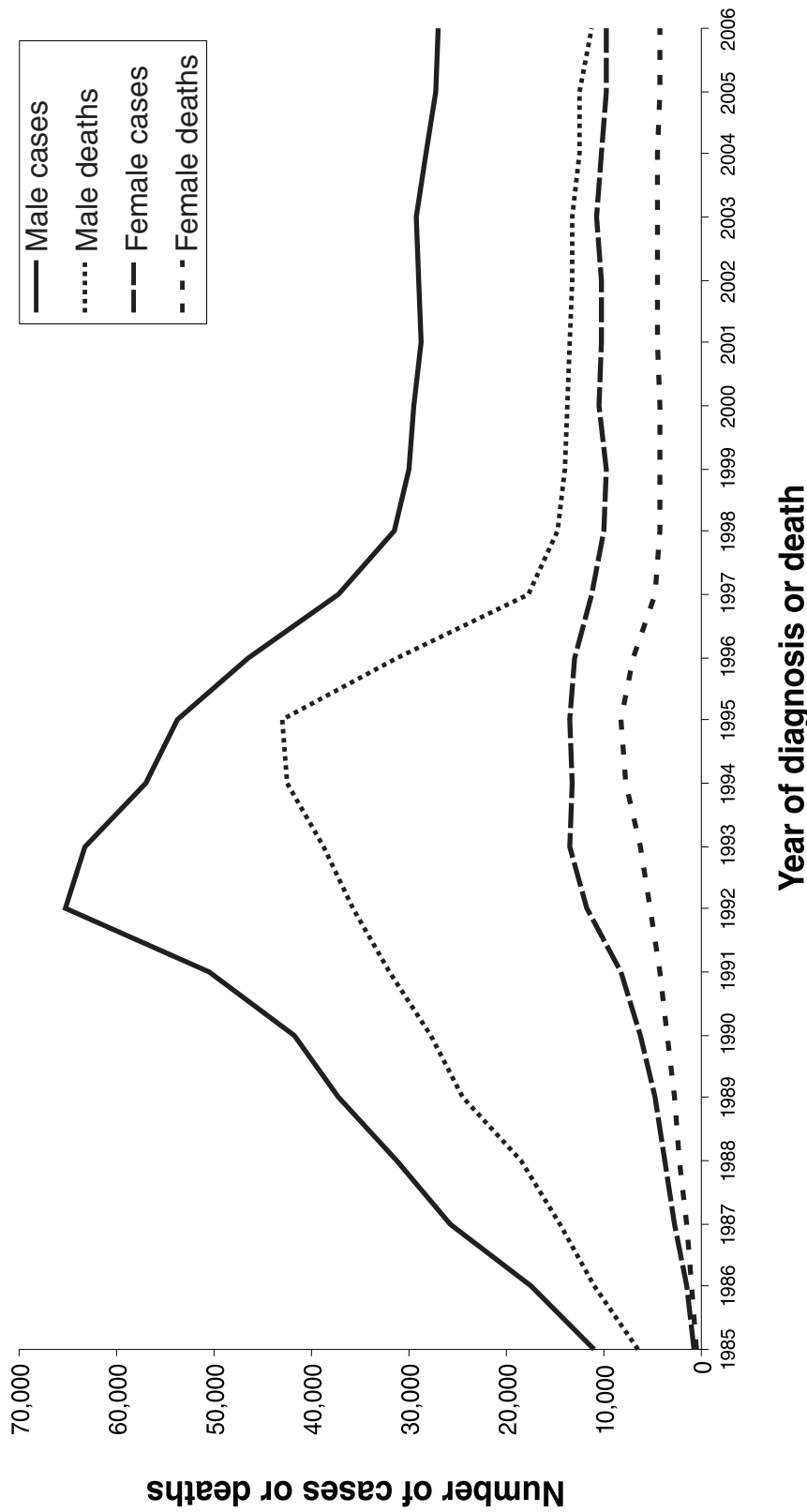
Note. Data have been adjusted for reporting delays of deaths, but not for incomplete reporting.

Figure 5. Estimated deaths among adult and adolescent American Indians/Alaska Natives, Asians, and Native Hawaiians/Other Pacific Islanders with AIDS, by race/ethnicity and year of death, 1985-2006, United States and dependent areas



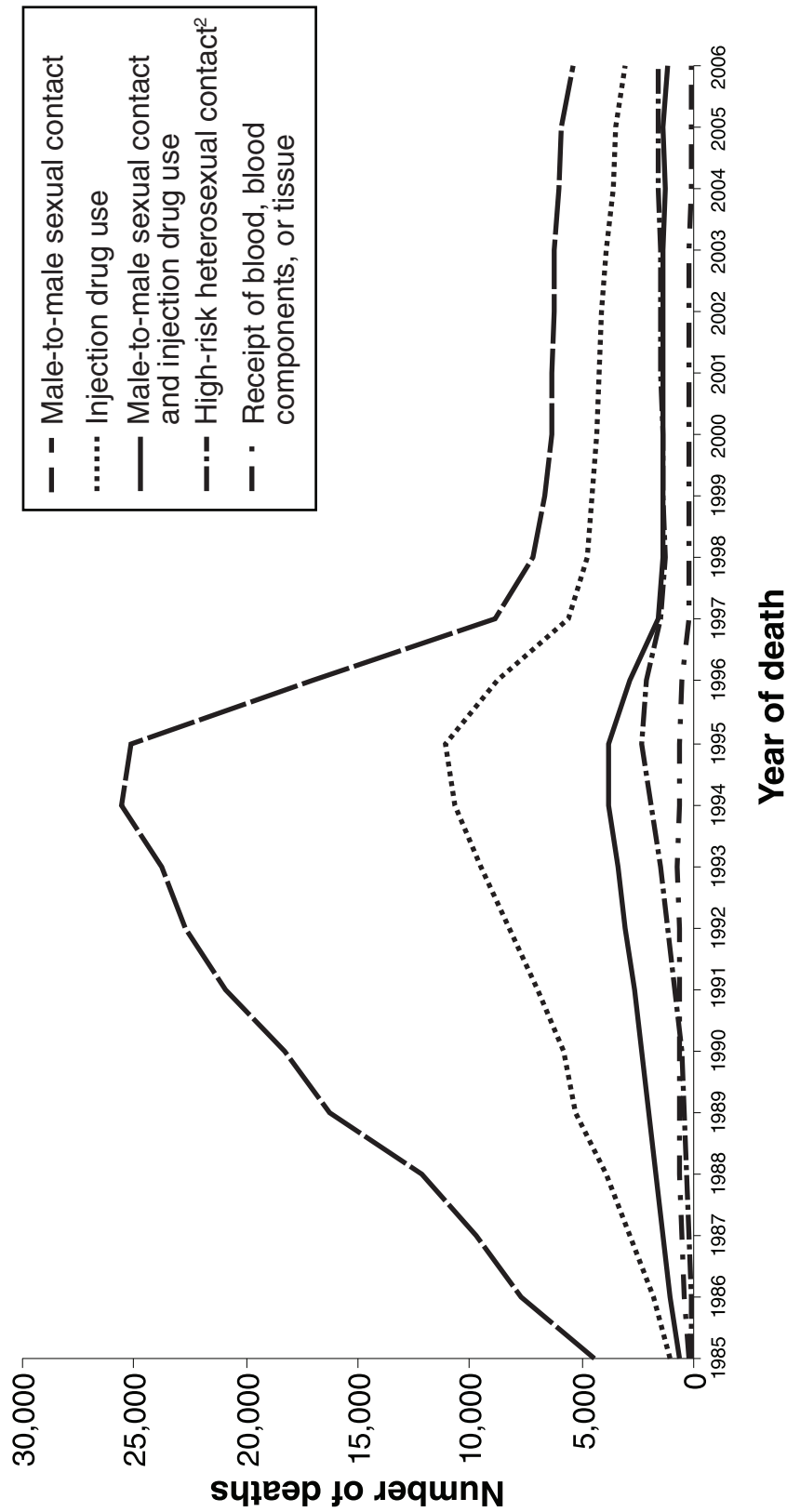
Note. Data have been adjusted for reporting delays of deaths, but not for incomplete reporting.

Figure 6. Estimated cases and deaths among adults and adolescents with AIDS, by sex and year of diagnosis or death, 1985-2006, United States and dependent areas



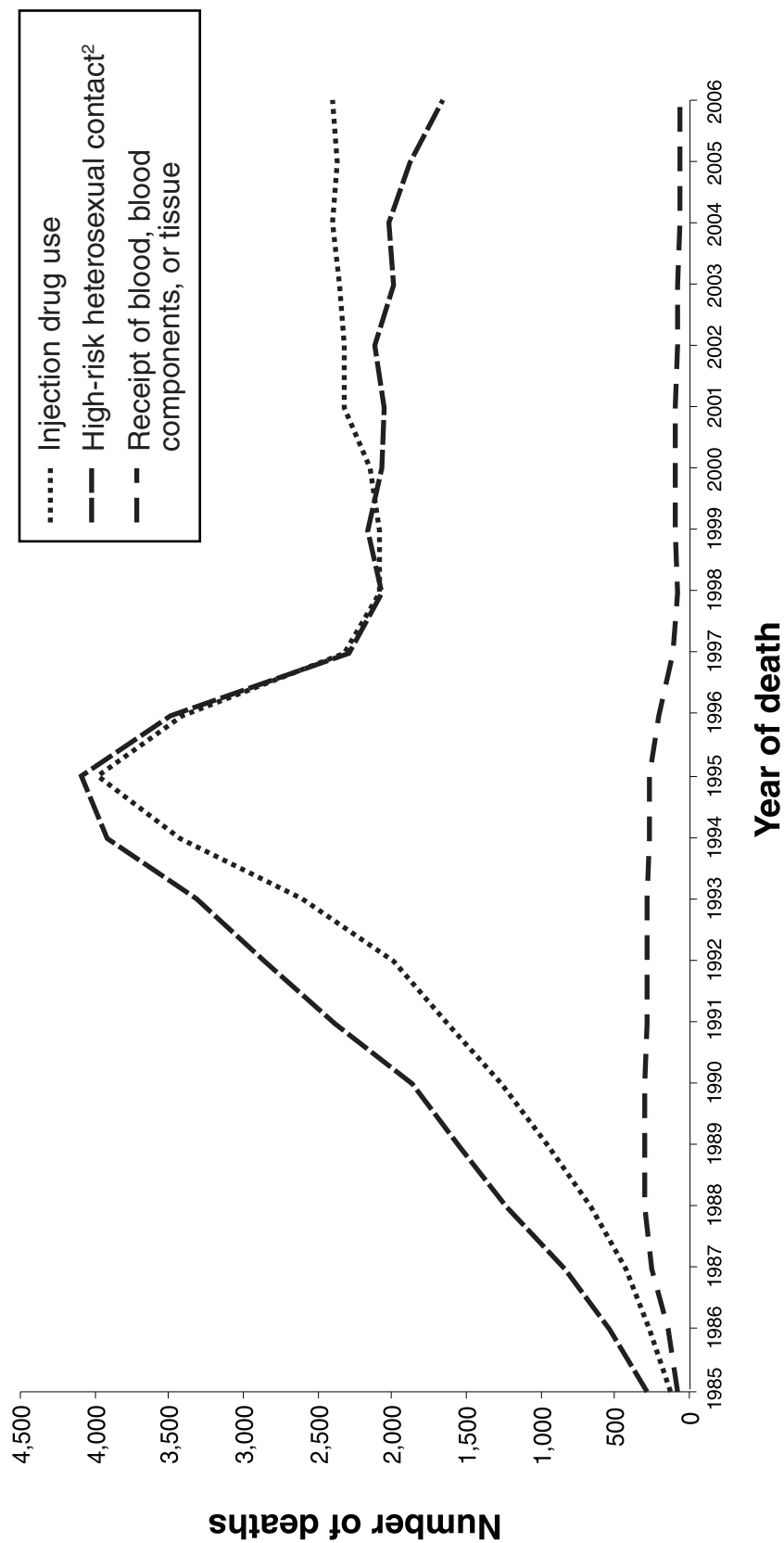
Note. Data have been adjusted for reporting delays of deaths, but not for incomplete reporting.

Figure 7. Estimated deaths among adult and adolescent males with AIDS, by transmission category¹ and year of death, 1985-2006, United States and dependent areas



Note. Data have been adjusted for reporting delays of deaths and missing risk-factor information, but not for incomplete reporting.
¹Excludes cases with other or unknown transmission category.
²Heterosexual contact with a person known to have, or to be at high risk for, HIV infection.

Figure 8. Estimated deaths among adult and adolescent females with AIDS, by transmission category¹ and year of death, 1985-2006, United States and dependent areas

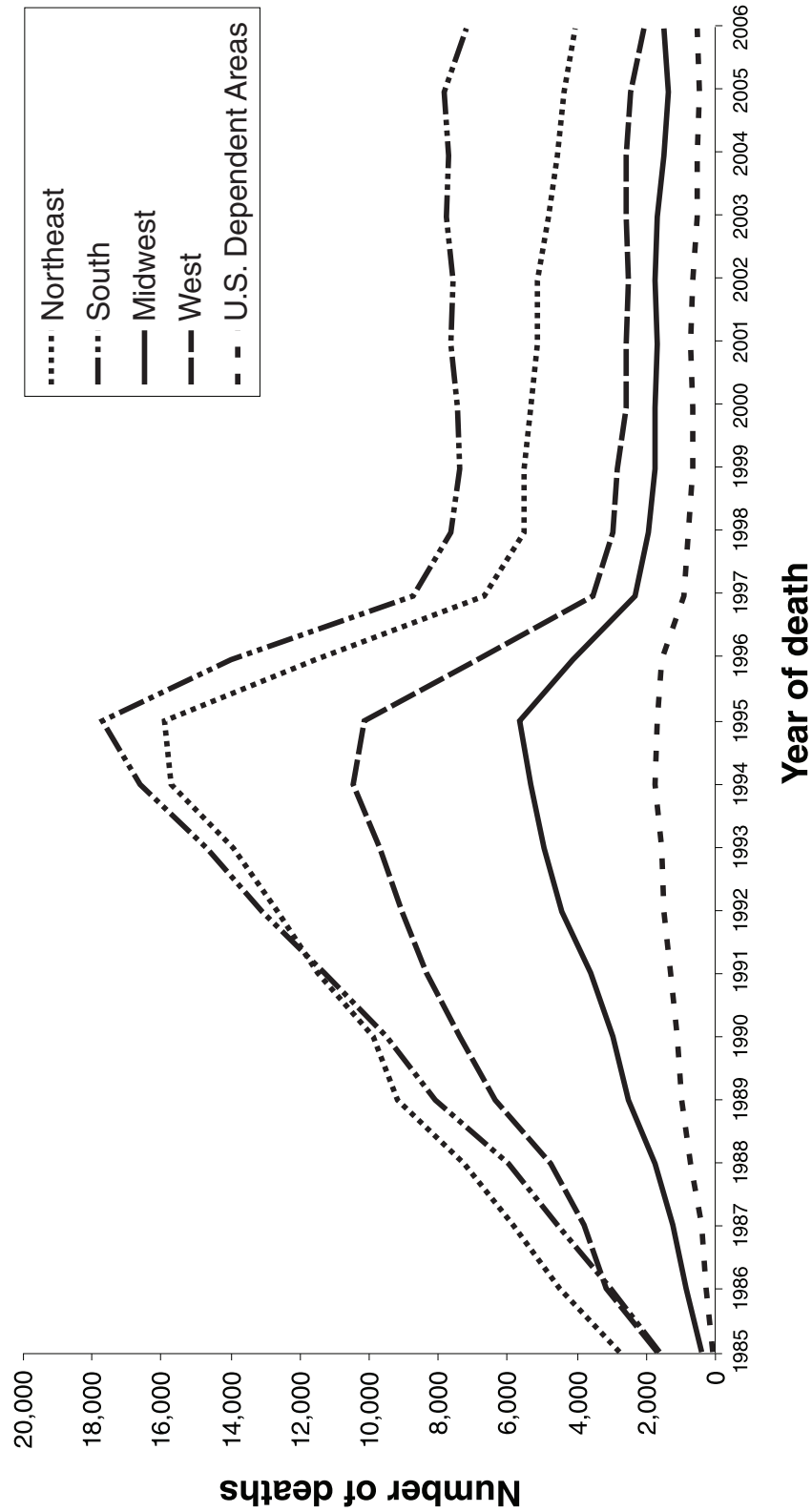


Note. Data have been adjusted for reporting delays of deaths and missing risk-factor information, but not for incomplete reporting.

¹Excludes cases with other or unknown transmission category.

²Heterosexual contact with a person known to have, or to be at high risk for, HIV infection.

Figure 9. Estimated deaths among adults and adolescents with AIDS, by region of residence and year of death, 1985-2006, United States and dependent areas



Note. Data have been adjusted for reporting delays of deaths, but not for incomplete reporting.

Table 7. Number of deaths, percent of total deaths, and death rates per 100,000 population for the 10 leading causes of deaths among persons 25-34 years of age, by race/ethnicity and sex, 2006, 50 states and the District of Columbia

| Male | | | | | Female | | | | |
|---------------------------------------|--|------------|-------------------------|-------------|--------|--|------------|-------------------------|-------------|
| Rank | Cause of death | Number | Percent of total deaths | Death rate | Rank | Cause of death | Number | Percent of total deaths | Death rate |
| American Indian/Alaskan Native | | | | | | | | | |
| 1 | Accidents (Unintentional injuries) | 212 | 40.1 | 110.4 | 1 | Accidents (Unintentional injuries) | 79 | 37.4 | 49.9 |
| 2 | Intentional self-harm | 61 | 13.1 | 38.0 | 2 | Malignant neoplasms | 17 | 8.1 | 10.7 |
| 3 | Assault (homicide) | 50 | 10.7 | 31.2 | 3 | Intentional self-harm | 14 | 6.6 | 8.9 |
| 4 | Diseases of heart | 23 | 4.9 | 14.3 | 3 | Assault (homicide) | 14 | 6.6 | 8.9 |
| 5 | Chronic liver disease | 19 | 4.1 | 11.8 | 5 | Diseases of heart | 12 | 5.7 | 7.6 |
| 6 | Malignant neoplasms | 11 | 2.5 | 6.9 | 6 | Diabetes mellitus | 9 | 4.3 | 5.7 |
| 7 | Diabetes mellitus | 6 | 1.3 | 3.7 | 6 | Chronic liver disease | 9 | 4.3 | 5.7 |
| 8 | Human immunodeficiency virus disease | 4 | 0.9 | --- | 8 | Septicemia | 6 | 2.8 | 3.8 |
| 9 | Cerebrovascular diseases | 3 | 0.6 | --- | 9 | Influenza and pneumonia | 5 | 2.4 | 3.2 |
| 9 | Nephritis, nephrotic syndrome and nephrosis | 3 | 0.6 | --- | 10 | Preganancy, childbirth and the puerperium | 4 | 1.9 | --- |
| Asian | | | | | | | | | |
| 1 | Accidents (Unintentional injuries) | 153 | 23.9 | 13.8 | 1 | Malignant neoplasms | 93 | 25.9 | 8.0 |
| 2 | Intentional self-harm | 124 | 19.4 | 11.1 | 2 | Accidents (Unintentional injuries) | 62 | 17.3 | 5.3 |
| 3 | Malignant neoplasms | 88 | 13.8 | 7.9 | 3 | Intentional self-harm | 47 | 13.1 | 4.1 |
| 4 | Diseases of heart | 71 | 11.1 | 6.4 | 4 | Assault (homicide) | 22 | 6.1 | 1.9 |
| 5 | Assault (homicide) | 56 | 8.8 | 5.0 | 5 | Diseases of heart | 21 | 5.8 | 1.8 |
| 6 | Cerebrovascular diseases | 14 | 2.2 | 1.3 | 6 | Preganancy, childbirth and the puerperium | 20 | 5.6 | 1.7 |
| 7 | Chronic liver disease | 11 | 1.7 | 1.0 | 7 | Cerebrovascular diseases | 8 | 2.2 | 0.7 |
| 8 | Septicemia | 8 | 1.3 | 0.7 | 8 | Congenital malformations, deformations and chromosomal abnormalities | 6 | 1.7 | 0.5 |
| 8 | Diabetes mellitus | 8 | 1.3 | 0.7 | 9 | Influenza and pneumonia | 5 | 1.4 | 0.4 |
| 10 | Influenza and pneumonia | 7 | 1.1 | 0.6 | 10 | Benign neoplasm | 3 | 0.8 | --- |
| 10 | Congenital malformations, deformations and chromosomal abnormalities | 7 | 1.1 | 0.6 | 10 | Nephritis, nephrotic syndrome and nephrosis | 3 | 0.8 | --- |
| Black/African American | | | | | | | | | |
| 1 | Assault (homicide) | 2,315 | 33.9 | 92.3 | 1 | Accidents (Unintentional injuries) | 423 | 13.7 | 15.6 |
| 2 | Accidents (Unintentional injuries) | 1,480 | 21.7 | 59.0 | 2 | Diseases of heart | 367 | 11.9 | 13.5 |
| 3 | Diseases of heart | 653 | 9.6 | 26.0 | 3 | Malignant neoplasms | 365 | 11.8 | 13.5 |
| 4 | Human immunodeficiency virus disease | 416 | 6.1 | 16.6 | 4 | Human immunodeficiency virus disease | 349 | 11.3 | 12.9 |
| 5 | Intentional self-harm | 414 | 6.1 | 16.5 | 5 | Assault (homicide) | 320 | 10.3 | 11.8 |
| 6 | Malignant neoplasms | 271 | 4.0 | 10.8 | 6 | Preganancy, childbirth and the puerperium | 115 | 3.7 | 4.2 |
| 7 | Diabetes mellitus | 135 | 2.0 | 5.4 | 7 | Diabetes mellitus | 102 | 3.3 | 3.8 |
| 8 | Cerebrovascular diseases | 75 | 1.1 | 3.0 | 8 | Cerebrovascular diseases | 74 | 2.4 | 2.7 |
| 9 | Chronic lower respiratory diseases | 61 | 0.9 | 2.4 | 9 | Anemias | 56 | 1.8 | 2.1 |
| 10 | Nephritis, nephrotic syndrome and nephrosis | 56 | 0.8 | 2.2 | 10 | Intentional self-harm | 52 | 1.7 | 1.9 |

--- Rates based on fewer than five events in the numerator are not presented since rates based on small numbers are likely to be unstable.

Table 7. Number of deaths, percent of total deaths, and death rates per 100,000 population for the 10 leading causes of deaths among persons 25-34 years of age, by race/ethnicity and sex, 2006, 50 states and the District of Columbia

| Male | | | | | Female | | | | |
|---|--|------------|-------------------------|------------|--------|---|-----------|-------------------------|------------|
| Rank | Cause of death | Number | Percent of total deaths | Death rate | Rank | Cause of death | Number | Percent of total deaths | Death rate |
| Hispanic/Latino | | | | | | | | | |
| 1 | Accidents (Unintentional injuries) | 2,000 | 38.5 | 45.8 | 1 | Accidents (Unintentional injuries) | 400 | 25.5 | 11.1 |
| 2 | Assault (homicide) | 880 | 17.5 | 20.1 | 2 | Malignant neoplasms | 309 | 19.7 | 8.6 |
| 3 | Intentional self-harm | 486 | 9.7 | 11.1 | 3 | Assault (homicide) | 115 | 7.3 | 3.2 |
| 4 | Diseases of heart | 291 | 5.8 | 6.6 | 4 | Intentional self-harm | 88 | 5.6 | 2.5 |
| 5 | Malignant neoplasms | 270 | 5.4 | 6.2 | 5 | Diseases of heart | 83 | 5.3 | 2.3 |
| 6 | Human immunodeficiency virus disease | 152 | 3.0 | 3.5 | 6 | Preganancy, childbirth and the puerperium | 70 | 4.5 | 2.0 |
| 7 | Chronic liver disease | 64 | 1.3 | 1.5 | 7 | Human immunodeficiency virus disease | 43 | 2.7 | 1.2 |
| 8 | Cerebrovascular diseases | 61 | 1.2 | 1.4 | 8 | Diabetes mellitus | 38 | 2.4 | 1.1 |
| 9 | Congenital malformations, deformations and chromosomal abnormalities | 39 | 0.8 | 0.9 | 9 | Cerebrovascular diseases | 33 | 2.1 | 0.9 |
| 10 | Diabetes mellitus | 36 | 0.7 | 0.8 | 10 | Chronic liver disease | 21 | 1.3 | 0.6 |
| Native Hawaiian/Other Pacific Islander | | | | | | | | | |
| 1 | Accidents (Unintentional injuries) | 10 | 38.5 | 27.1 | 1 | Accidents (Unintentional injuries) | 5 | 45.5 | 14.2 |
| 2 | Diseases of heart | 3 | 11.5 | --- | 2 | Malignant neoplasms | 2 | 18.2 | --- |
| 2 | Cerebrovascular diseases | 3 | 11.5 | --- | 2 | Preganancy, childbirth and the puerperium | 2 | 18.2 | --- |
| 4 | Assault (homicide) | 2 | 7.7 | --- | 4 | Cerebrovascular diseases | 1 | 9.1 | --- |
| 5 | Benign neoplasm | 1 | 3.8 | --- | | | | | |
| 5 | Diabetes mellitus | 1 | 3.8 | --- | | | | | |
| 5 | Nephritis, nephrotic syndrome and nephrosis | 1 | 3.8 | --- | | | | | |
| 5 | Intentional self-harm | 1 | 3.8 | --- | | | | | |
| White | | | | | | | | | |
| 1 | Accidents (Unintentional injuries) | 7,578 | 44.3 | 63.2 | 1 | Accidents (Unintentional injuries) | 2,507 | 33.5 | 21.2 |
| 2 | Intentional self-harm | 2,960 | 17.3 | 24.7 | 2 | Malignant neoplasms | 1,100 | 14.7 | 9.3 |
| 3 | Diseases of heart | 1,250 | 7.3 | 10.4 | 3 | Intentional self-harm | 729 | 9.7 | 6.2 |
| 4 | Malignant neoplasms | 1,126 | 6.6 | 9.4 | 4 | Diseases of heart | 524 | 7.0 | 4.4 |
| 5 | Assault (homicide) | 664 | 3.9 | 5.5 | 5 | Assault (homicide) | 267 | 3.6 | 2.3 |
| 6 | Diabetes mellitus | 189 | 1.1 | 1.6 | 6 | Diabetes mellitus | 145 | 1.9 | 1.2 |
| 7 | Congenital malformations, deformations and chromosomal abnormalities | 173 | 1.0 | 1.4 | 7 | Congenital malformations deformations and chromosomal abnormalities | 119 | 1.6 | 1.0 |
| 8 | Human immunodeficiency virus disease | 152 | 0.9 | 1.3 | 8 | Cerebrovascular diseases | 117 | 1.6 | 1.0 |
| 9 | Cerebrovascular diseases | 134 | 0.8 | 1.1 | 9 | Preganancy, childbirth and the puerperium | 113 | 1.5 | 1.0 |
| 10 | Chronic liver disease | 121 | 0.8 | 1.0 | 10 | Influenza and pneumonia | 93 | 1.2 | 0.8 |

--- Rates based on fewer than five events in the numerator are not presented since rates based on small numbers are likely to be unstable.

Table 8. Number of deaths, percent of total deaths, and death rates per 100,000 population for the 10 leading causes of deaths among persons 35-44 years of age, by race/ethnicity and sex, 2006, 50 states and the District of Columbia

| Male | | | | | Female | | | | |
|---------------------------------------|---|-----------|-------------------------|-------------|--------|---|-----------|-------------------------|------------|
| Rank | Cause of death | Number | Percent of total deaths | Death rate | Rank | Cause of death | Number | Percent of total deaths | Death rate |
| American Indian/Alaskan Native | | | | | | | | | |
| 1 | Accidents (Unintentional injuries) | 194 | 26.1 | 124.0 | 1 | Accidents (Unintentional injuries) | 86 | 19.2 | 53.3 |
| 2 | Diseases of heart | 102 | 13.7 | 65.2 | 2 | Chronic liver disease | 60 | 13.4 | 37.2 |
| 3 | Intentional self-harm | 62 | 8.3 | 39.6 | 3 | Malignant neoplasms | 54 | 12.1 | 33.5 |
| 4 | Chronic liver disease | 58 | 7.8 | 37.1 | 4 | Diseases of heart | 35 | 7.8 | 21.7 |
| 5 | Malignant neoplasms | 34 | 4.6 | 21.7 | 5 | Intentional self-harm | 23 | 5.1 | 14.3 |
| 6 | Assault (homicide) | 31 | 4.2 | 19.8 | 6 | Diabetes mellitus | 20 | 4.5 | 12.4 |
| 7 | Human immunodeficiency virus disease | 21 | 2.8 | 13.4 | 7 | Assault (homicide) | 14 | 3.1 | 8.7 |
| 8 | Cerebrovascular diseases | 18 | 2.4 | 11.5 | 8 | Human immunodeficiency virus disease | 11 | 2.5 | 6.8 |
| 9 | Diabetes mellitus | 17 | 2.3 | 10.9 | 9 | Cerebrovascular diseases | 9 | 2.0 | 5.6 |
| 10 | Viral hepatitis | 15 | 2.0 | 9.6 | 10 | Septicemia | 8 | 1.8 | 5.0 |
| Asian | | | | | | | | | |
| 1 | Malignant neoplasms | 225 | 23.1 | 20.1 | 1 | Malignant neoplasms | 299 | 44.6 | 24.2 |
| 2 | Diseases of heart | 167 | 17.2 | 15.4 | 2 | Accidents (Unintentional injuries) | 73 | 10.9 | 6.4 |
| 3 | Accidents (Unintentional injuries) | 127 | 14.1 | 12.6 | 3 | Cerebrovascular diseases | 52 | 7.7 | 4.5 |
| 4 | Intentional self-harm | 95 | 9.8 | 8.8 | 4 | Diseases of heart | 40 | 6.0 | 3.5 |
| 5 | Cerebrovascular diseases | 51 | 5.2 | 4.7 | 5 | Intentional self-harm | 39 | 5.8 | 3.4 |
| 6 | Assault (homicide) | 32 | 3.3 | 3.0 | 6 | Assault (homicide) | 20 | 3.0 | 1.7 |
| 7 | Chronic liver disease | 28 | 2.9 | 2.6 | 7 | Preganancy, childbirth and the puerperium | 14 | 2.1 | 1.2 |
| 8 | Human immunodeficiency virus disease | 19 | 2.0 | 1.8 | 8 | Diabetes mellitus | 8 | 1.2 | 0.7 |
| 9 | Diabetes mellitus | 18 | 1.9 | 1.7 | 8 | Chronic lower respiratory diseases | 8 | 1.2 | 0.7 |
| 10 | Viral hepatitis | 17 | 1.7 | 1.6 | 8 | Chronic liver disease | 8 | 1.2 | 0.7 |

--- Rates based on fewer than five events in the numerator are not presented since rates based on small numbers are likely to be unstable.

Table 8. Number of deaths, percent of total deaths, and death rates per 100,000 population for the 10 leading causes of deaths among persons 35-44 years of age, by race/ethnicity and sex, 2006, 50 states and the District of Columbia

| Male | | | | | Female | | | | |
|-------------------------------|---|--------------|-------------------------|-------------|--------|---|------------|-------------------------|-------------|
| Rank | Cause of death | Number | Percent of total deaths | Death rate | Rank | Cause of death | Number | Percent of total deaths | Death rate |
| Black/African American | | | | | | | | | |
| 1 | Diseases of heart | 1,864 | 18.0 | 74.1 | 1 | Malignant neoplasms | 1,522 | 20.7 | 53.5 |
| 2 | Accidents (Unintentional injuries) | 1,637 | 15.8 | 65.1 | 2 | Diseases of heart | 1,173 | 16 | 41.3 |
| 3 | Human immunodeficiency virus disease | 1,336 | 12.9 | 53.1 | 3 | Human immunodeficiency virus disease | 823 | 11.2 | 29.0 |
| 4 | Assault (homicide) | 1,052 | 10.2 | 41.8 | 4 | Accidents (Unintentional injuries) | 670 | 9.1 | 23.6 |
| 5 | Malignant neoplasms | 973 | 9.4 | 38.7 | 5 | Cerebrovascular diseases | 352 | 4.8 | 12.4 |
| 6 | Diabetes mellitus | 343 | 3.3 | 13.6 | 6 | Assault (homicide) | 279 | 3.8 | 9.8 |
| 7 | Intentional self-harm | 342 | 3.3 | 13.6 | 7 | Diabetes mellitus | 235 | 3.2 | 8.3 |
| 8 | Cerebrovascular diseases | 339 | 3.3 | 13.5 | 8 | Nephritis, nephrotic syndrome and nephrosis | 152 | 2.1 | 5.4 |
| 9 | Nephritis, nephrotic syndrome and nephrosis | 181 | 1.7 | 7.2 | 9 | Septicemia | 138 | 1.9 | 4.9 |
| 10 | Chronic liver disease | 151 | 1.5 | 6.0 | 10 | Chronic lower respiratory diseases | 122 | 1.7 | 4.3 |
| Hispanic/Latino | | | | | | | | | |
| 1 | Accidents (Unintentional injuries) | 1,691 | 27.2 | 48.3 | 1 | Malignant neoplasms | 875 | 32.1 | 28.1 |
| 2 | Diseases of heart | 709 | 11.4 | 20.3 | 2 | Accidents (Unintentional injuries) | 411 | 15.1 | 13.2 |
| 3 | Malignant neoplasms | 565 | 9.1 | 16.1 | 3 | Diseases of heart | 221 | 8.1 | 7.1 |
| 4 | Human immunodeficiency virus disease | 456 | 7.3 | 13.0 | 4 | Human immunodeficiency virus disease | 128 | 4.7 | 4.1 |
| 5 | Assault (homicide) | 440 | 7.1 | 12.6 | 5 | Cerebrovascular diseases | 115 | 4.2 | 3.7 |
| 6 | Intentional self-harm | 373 | 6.0 | 10.1 | 6 | Assault (homicide) | 97 | 3.6 | 3.1 |
| 7 | Chronic liver disease | 350 | 5.6 | 10.0 | 7 | Chronic liver disease | 94 | 3.4 | 3.0 |
| 8 | Cerebrovascular diseases | 190 | 3.2 | 5.9 | 8 | Intentional self-harm | 68 | 2.5 | 2.2 |
| 9 | Diabetes mellitus | 118 | 1.9 | 3.4 | 9 | Diabetes mellitus | 67 | 2.5 | 2.2 |
| 10 | Viral hepatitis | 88 | 1.4 | 2.5 | 10 | Septicemia | 36 | 1.3 | 1.2 |

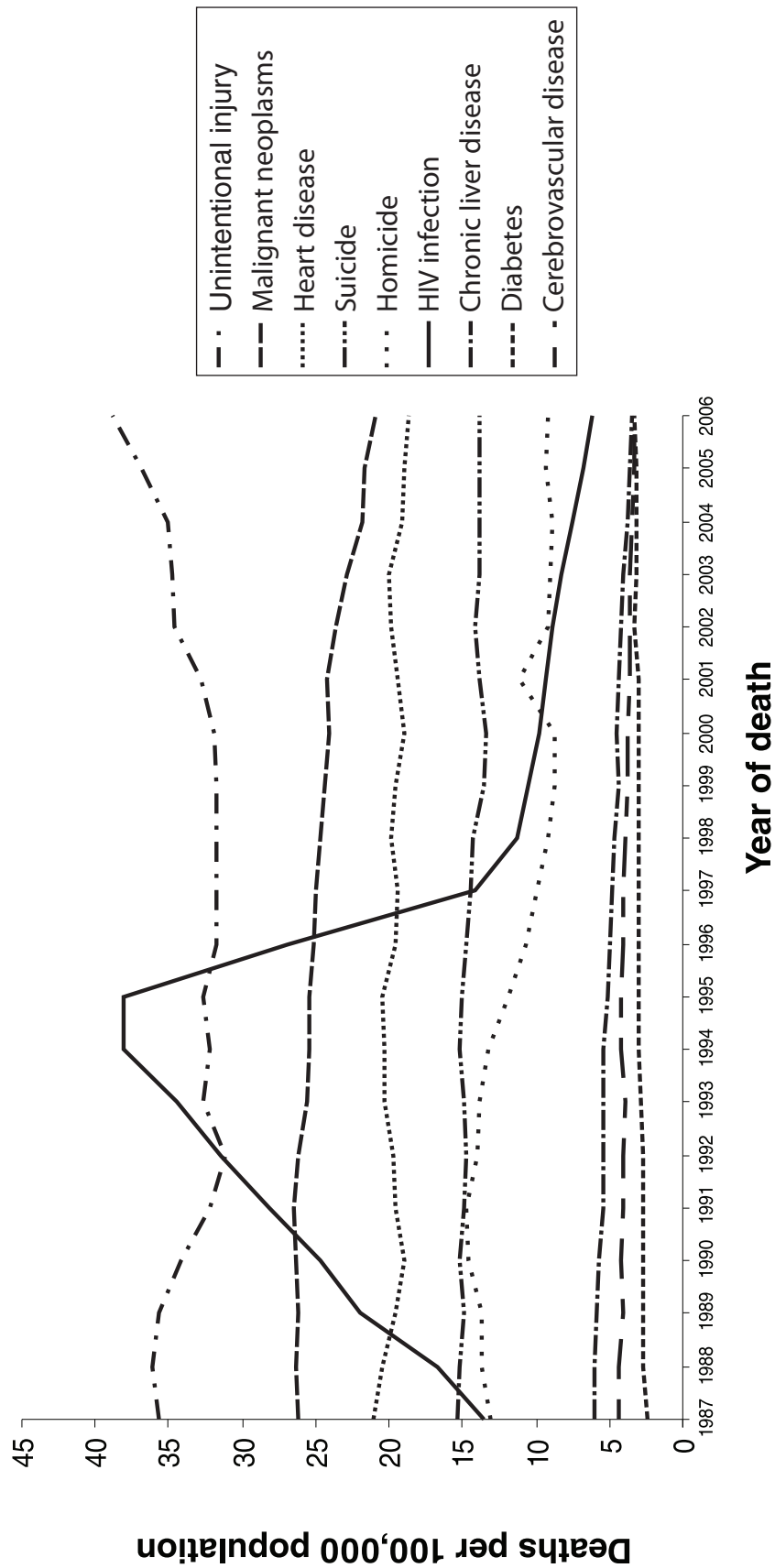
--- Rates based on fewer than five events in the numerator are not presented since rates based on small numbers are likely to be unstable.

Table 8. Number of deaths, percent of total deaths, and death rates per 100,000 population for the 10 leading causes of deaths among persons 35-44 years of age, by race/ethnicity and sex, 2006, 50 states and the District of Columbia

| Male | | | | | Female | | | | |
|---|---|--------|-------------------------|------------|--------|--|--------|-------------------------|------------|
| Rank | Cause of death | Number | Percent of total deaths | Death rate | Rank | Cause of death | Number | Percent of total deaths | Death rate |
| Native Hawaiian/Other Pacific Islander | | | | | | | | | |
| 1 | Diseases of heart | 19 | 29.7 | 59.3 | 1 | Malignant neoplasms | 12 | 32.4 | 37.8 |
| 2 | Malignant neoplasms | 10 | 15.6 | 31.2 | 2 | Diseases of heart | 9 | 24.3 | 28.4 |
| 2 | Accidents (Unintentional injuries) | 10 | 15.6 | 31.2 | 3 | Accidents (Unintentional injuries) | 4 | 10.8 | --- |
| 4 | Viral hepatitis | 3 | 4.7 | --- | 4 | Diabetes mellitus | 2 | 5.4 | --- |
| 4 | Intentional self-harm | 3 | 4.7 | --- | 5 | Meningitis | 1 | 2.7 | --- |
| 6 | Human immunodeficiency virus disease | 2 | 3.1 | --- | 5 | Influenza and pneumonia | 1 | 2.7 | --- |
| 6 | Diabetes mellitus | 2 | 3.1 | --- | 5 | Nephritis, nephrotic syndrome and nephrosis | 1 | 2.7 | --- |
| 6 | Assault (homicide) | 2 | 3.1 | --- | 5 | Congenital malformations, deformations and chromosomal abnormalities | 1 | 2.7 | --- |
| 9 | Tuberculosis | 1 | 1.6 | --- | 5 | Pregnancy, childbirth and the puerperium | 1 | 2.7 | --- |
| 9 | Septicemia | 1 | 1.6 | --- | | | | | |
| 9 | Influenza and pneumonia | 1 | 1.6 | --- | | | | | |
| White | | | | | | | | | |
| 1 | Accidents (Unintentional injuries) | 8,714 | 23.1 | 56.8 | 1 | Malignant neoplasms | 5,162 | 26.4 | 36.2 |
| 2 | Diseases of heart | 5,738 | 17.1 | 40.1 | 2 | Accidents (Unintentional injuries) | 3,845 | 19.6 | 27.0 |
| 3 | Intentional self-harm | 4,179 | 12.4 | 29.2 | 3 | Diseases of heart | 2,222 | 11.3 | 15.6 |
| 4 | Malignant neoplasms | 4,165 | 12.4 | 29.1 | 4 | Intentional self-harm | 1,329 | 6.8 | 9.3 |
| 5 | Chronic liver disease | 1,072 | 3.2 | 7.5 | 5 | Chronic liver disease | 621 | 3.2 | 4.4 |
| 6 | Human immunodeficiency virus disease | 981 | 2.9 | 6.9 | 6 | Cerebrovascular diseases | 528 | 2.7 | 3.7 |
| 7 | Diabetes mellitus | 777 | 2.3 | 5.4 | 7 | Diabetes mellitus | 480 | 2.5 | 3.4 |
| 8 | Assault (homicide) | 700 | 2.1 | 4.9 | 8 | Assault (homicide) | 339 | 1.7 | 2.4 |
| 9 | Cerebrovascular diseases | 558 | 1.7 | 3.9 | 9 | Chronic lower respiratory diseases | 285 | 1.5 | 2.0 |
| 10 | Influenza and pneumonia | 297 | 0.9 | 2.1 | 10 | Influenza and pneumonia | 252 | 1.3 | 1.8 |

--- Rates based on fewer than five events in the numerator are not presented since rates based on small numbers are likely to be unstable.

Figure 10. Trends in annual rates of death from leading causes of death among persons 25-44 years old, 1987-2006, 50 states and the District of Columbia



Technical Notes

HIV and AIDS cases are reported to the Centers for Disease Control and Prevention (CDC) by all 50 states, the District of Columbia, and U.S. dependent areas by the use of a standardized surveillance case definition and case report form. The original case definition of AIDS was modified in 1985 and 1987 (MMWR 1985; 34: 376-375, and MMWR 1987; 36[SS-1]: 1s-15s). The case definition was modified again in 1993 (MMWR 1992; 41 [RR-17]: 1-19). Effective January 1, 2000, the surveillance case definition for HIV infection was revised to incorporate the reporting criteria for HIV infection and AIDS into a single case definition for adults and children (MMWR 1999; 48 [RR-13]: 29-31). In 2008, the surveillance case definition for HIV infection was revised to require laboratory-confirmed evidence of HIV infection to meet the case definition among adults, adolescents, and children (MMWR 2008; 57 [RR-10]: 1-8). A case may be reported upon the initial diagnosis of AIDS or HIV and later updated when the disease or the vital status changes. Some cases may be first reported at death, either from surveillance activities at a hospital or other places where death may occur, or from a review of death certificates or a death registry. Health departments routinely review death registries to ascertain deaths of persons who were reported with HIV or AIDS. In this report, new racial categories have been used for presentation of the data. The Asian or Pacific Islander category displayed in previous HIV/AIDS surveillance reports has been split into 2 categories: (1) Asian and (2) Native Hawaiian or other Pacific Islander. The Asian category includes the cases in Asians/Pacific Islanders (referred to as legacy cases) that were reported before the implementation of the new racial categories in 2003 and a small percentage of cases in Asians/Pacific Islanders that were reported after 2003 but that were reported according to the old racial category (Asian/Pacific Islander). Persons categorized as white or black/African American were not Hispanic or Latino.

Data in this report include persons with AIDS who died through the end of December 2006 and were reported to CDC by June 30, 2008. Data presented in Tables 1 through 6 and Figures 3 through 9 are estimates of AIDS cases and deaths in persons with AIDS and not actual counts of persons reported to the surveillance system. The numbers of AIDS cases and deaths reported to CDC are statistically adjusted for delays in the reporting of cases and deaths.

The survival analysis presented in Figures 1a, 1b and 2 used the Kaplan-Meier method. The analysis included persons with an AIDS diagnosis based on: 1) CD4+ T-lymphocyte counts of fewer than 200 cells/ μ L only or a CD4+ percentage of less than 14, or 2) an AIDS-defining opportunistic illness. Survival was determined among persons diagnosed with AIDS during 1994–2005 and followed through December 31, 2006 and reported by June 30, 2008. This was done to allow at least 1 year after AIDS diagnosis, and to allow at least 18 months for a death to be reported by June 30, 2008. Survival was censored at 108 months. Persons who were diagnosed with AIDS and died in the same month were included in the survival analysis. Figure 2 summarizes the survival data, illustrating a comparison of survival by method of AIDS diagnosis.

For decedents reported to CDC with a missing date of death, this data element was imputed by subtracting the estimated median number of months required to report deaths (3 months) from the date the death was reported to CDC. If AIDS diagnosis occurred after the imputed date, then the date of AIDS diagnosis was used as the date of death. Where age at death was missing we calculated this by subtracting date of birth from date of death.

Data are presented by area of residence at death in Tables 2, 3, and 4 and Figure 9. Through 2006, an estimated 89,009 deaths were missing information on area of residence at death (16% of the total deaths). An additional 310 cases reported “foreign country” as the area of residence at death. For the 459,155 deaths with information on area of residence at death within the United States and its dependent areas (230 cases were missing information on area of residence at diagnosis), the concordance between the area of residence at death and the area of residence at AIDS diagnosis was 93%. Therefore, for deaths reported without an area of residence, we substituted the area of residence at AIDS diagnosis. Forty-six cases had no area of residence at death or area of residence at diagnosis reported.

Table 1 includes persons whose vital status is reported as “alive” and excludes those with an unknown vital status. The report, based on Tables 2 through 6 and Figures 1 through 9, includes deaths in persons with AIDS regardless of the cause of death. Data in Tables 2 and 6 are enumerated by age at death; Tables 3, 4 and 5 present data for adults and adolescents (i.e., age 13 years and older) based on the age at AIDS diagnosis.

Region of residence included in this report is defined as follows:

Northeast: Connecticut, Maine, Massachusetts, New Hampshire, New Jersey, New York, Pennsylvania, Rhode Island, and Vermont

Midwest: Illinois, Indiana, Iowa, Kansas, Michigan, Minnesota, Missouri, Nebraska, North Dakota, Ohio, South Dakota, and Wisconsin

South: Alabama, Arkansas, Delaware, District of Columbia, Florida, Georgia, Kentucky, Louisiana, Maryland, Mississippi, North Carolina, Oklahoma, South Carolina, Tennessee, Texas, Virginia, and West Virginia

West: Alaska, Arizona, California, Colorado, Hawaii, Idaho, Montana, Nevada, New Mexico, Oregon, Utah, Washington, and Wyoming

U.S. dependent areas: American Samoa, Guam, the Northern Mariana Islands, Puerto Rico, and the U.S. Virgin Islands

Tables 7 and 8, and Figure 10 present data compiled by the National Center for Health Statistics (NCHS) from death certificates of residents in the 50 states and the District of Columbia. For these data, each death is attributed to one underlying cause, based on information on the death certificate. The underlying cause of death was selected according to the International Classification of Diseases, 10th revision (ICD-10). Deaths due to HIV disease, as reported on death certificates, are not necessarily the same as deaths of persons with AIDS reported to the HIV surveillance systems of health departments. Persons with AIDS may die from causes unrelated to HIV infection (such as lung cancer or motor vehicle accidents). Because of improved treatment, survival after a diagnosis of AIDS has become longer, allowing a greater proportion of deaths of persons with AIDS to result from other causes. Some deaths attributed to HIV disease may not meet the surveillance case definition for AIDS. The AIDS case definition requires documentation of a low CD4 T-lymphocyte count or diagnosis of one of the approximately two dozen AIDS-defining illnesses. If information on the CD4 count is missing or no AIDS-defining illness was diagnosed, these persons cannot be counted as AIDS cases despite the fact that their deaths were attributed to HIV disease on their death certificates.