

# Enhanced Perinatal Surveillance (EPS) Data Collection System

Suzanne Whitmore, DrPH  
Shavonne Porter (Northrop Grumman Contractor)  
HIV Incidence and Case Surveillance Branch  
Division of HIV/AIDS Prevention  
Centers for Disease Control and Prevention

2007 Perinatal Hepatitis B & HIV Grantees' Meeting  
April 30<sup>th</sup>- May 2<sup>nd</sup>  
Doubletree Hotel, Atlanta, GA

*“The findings and conclusions in this report are those of the author and do not necessarily represent the views of the Centers for Disease Control and Prevention/the Agency for Toxic Substances and Disease Registry.”*



# EPS Data Collection System Update

- **Data collection and submission were manual processes**
  - Requiring a data collection form to be mailed to CDC (except for NYS).
  - CDC staff entered the forms into an Access application.
- **In 2006, the Access application was retired**
  - Technical issues
  - DHAP requirement to standardize application platforms
- **Interim Solution: Access database developed by Texas**
  - Several sites are utilizing the Texas application
  - Other sites are holding the forms until CDC deploys an application



# EPS Data Collection Solution: Customized Application

- **Advantages**
  - Can design the user interface to support the structure of the form
  - Can import common fields
    - eHARS → EPS
    - PRODAS → EPS
  - Can produce a SAS dataset
  - On-going application support can be done in-house and is easy to access
  - Institutional development knowledge will stay in house
  - Flexibility in unanticipated changes to requirements
- **Disadvantages**
  - Longer system development life cycle than other systems such as QDS



# EPS Data Collection Solution: Overview

- **Development Platform:**
  - MS Windows, Visual Basic and SQL Express or MDSE
- **Application and database**
  - Resides at surveillance site
  - Windows based
  - Will output SAS dataset

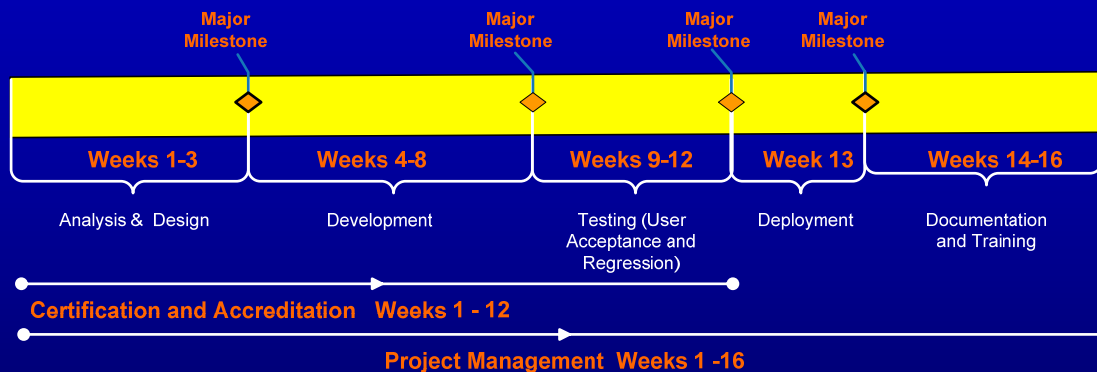


# EPS Data Collection Solution: Program and Support

- **Training, documentation, and help desk support provided**
  - Training: Net Meeting
  - Documentation: On-line Help, User's Guide, Installation Procedures, Change Management Plan
- **Programmatic Support**
  - Protocol required
    - Data entry
    - Monthly transfer of data



# Estimated Project Timeline and Project Phases



# Project Team Composition

- **CDC and Contract Project Staff:**
  - ❖ **EPS Epidemiologist**
  - ❖ **EPS Scientific Data Analyst**
  - ❖ **Project Manager**
  - ❖ **Business Analyst**
  - ❖ **System Architect**
  - ❖ **2 Developers**
  - ❖ **Technical Writer**
  - ❖ **Tester**
  - ❖ **Trainer**



# Thank You

- **Suzanne Whitmore, DrPH**
  - 404.639.1556
  - [SWhitmore@CDC.gov](mailto:SWhitmore@CDC.gov)
  
- **Shavonne Porter**
  - 404.639.6453
  - [SPorter1 @CDC.gov](mailto:SPorter1@CDC.gov)

