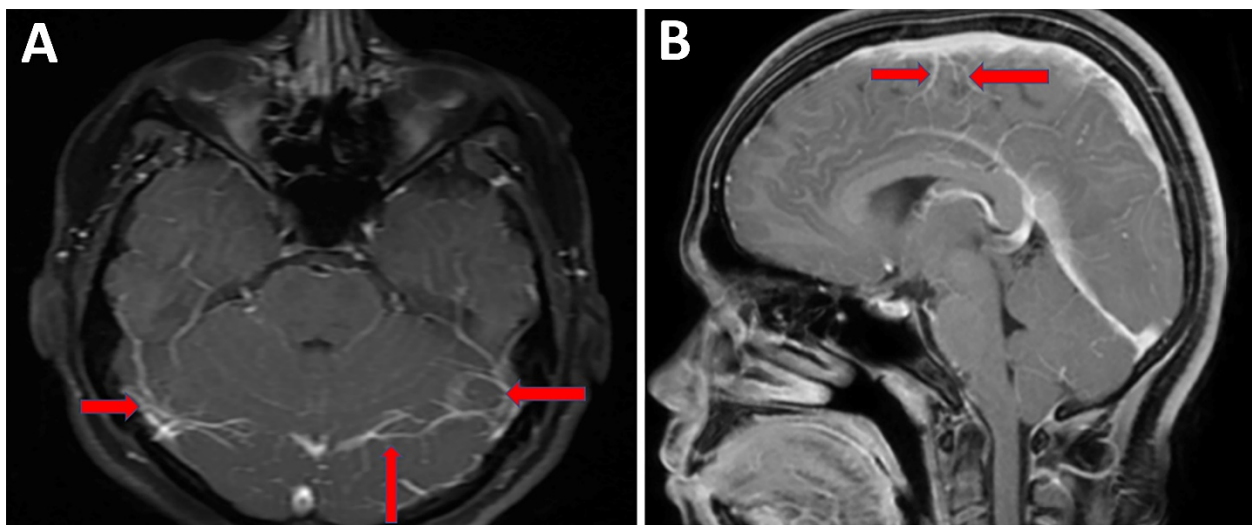
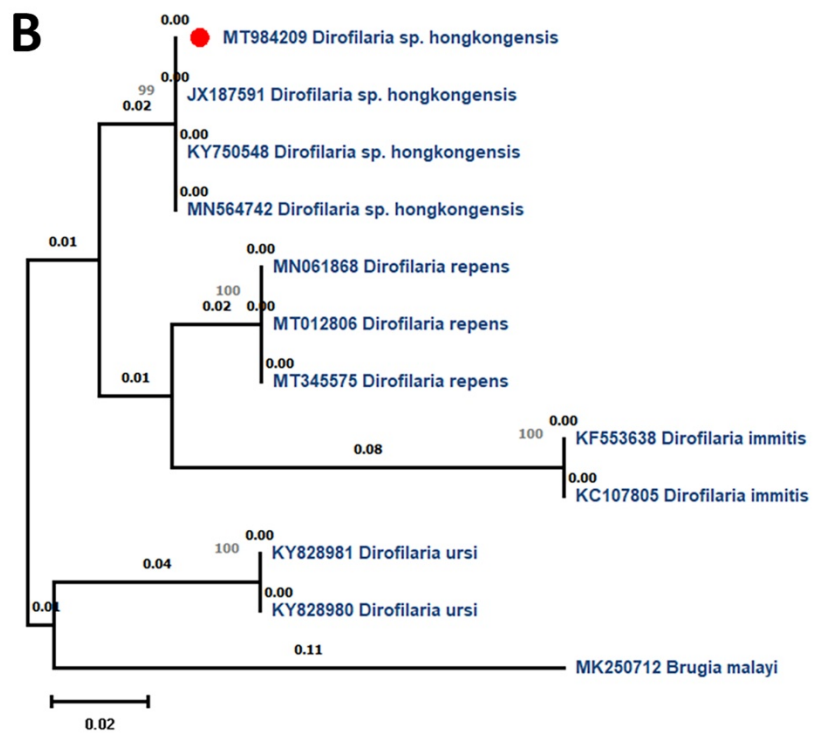
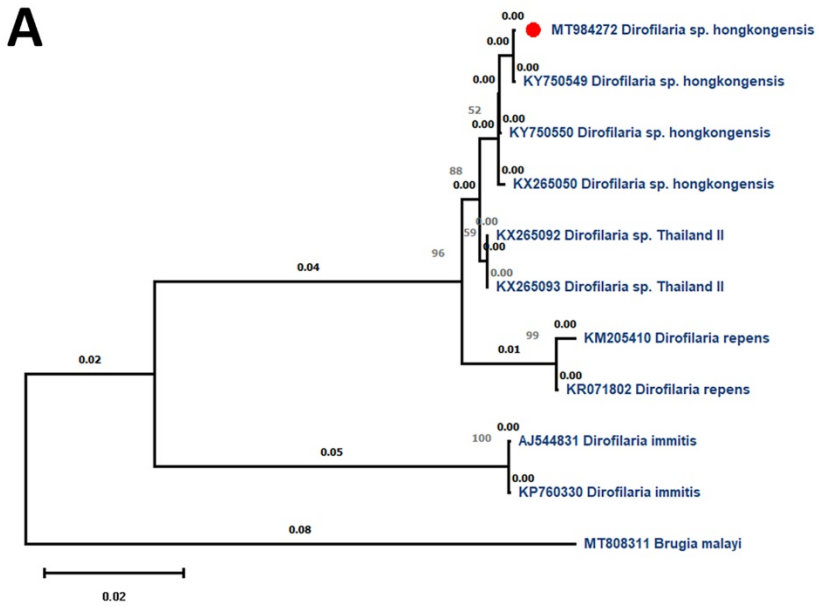


Eosinophilic Meningitis and Intraocular Infection Caused by *Dirofilaria* sp. Genotype Hongkong

Appendix



Appendix Figure 1. Magnetic resonance imaging of brain of patient infected with *Dirofilaria* sp. genotype Hongkong. A) Post contrast, axial T1 image and B) sagittal image show diffuse leptomeningeal enhancement.



Appendix Figure 2. Phylogenetic analysis of *Dirofilaria* sp. genotype Hongkong worm isolated from the patient. A) 12S rRNA gene sequences of the *Dirofilaria* species. *Dirofilaria* sp. genotype Hongkong. B) Phylogenetic tree of cytochrome c oxidase subunit 1 gene sequences of the *Dirofilaria* species. *Brugia malayi* was used as the outgroup. Numbers along branches are bootstrap values. Red dots indicate *Dirofilaria* isolated in the present study. Scale bars indicate nucleotide substitutions per site.