

of transmission across the countries is thought to be ASF virus-contaminated pork products (2). The outbreak in Vietnam was confirmed in the northern part of the country, near China, where many instances of illegal movement of animals and meat products across the China–Vietnam border have been reported (<http://www.fao.org/3/i8805en/I8805EN.pdf>). Therefore, it is likely that the virus originated in China.

Although the p30, p54, and p72 sequences were 100% identical to those from China and Georgia, whole genomes must be monitored for possible changes and further spread of the ASF virus. Since the 2018 outbreak in China, the subsequent ASF outbreak in Vietnam (February 1, 2019) increases the possibility of virus spread to nearby swine-raising Southeast Asia countries, including Laos, Thailand, Cambodia, and Myanmar. Although ASF has occurred in many countries, including Russia and Europe, its outbreak in Asia is far more critical because 60% of the world's pig population is concentrated in that area and the socioeconomic effects of swine disease would be greater than that in other regions. Therefore, to avoid great economic losses worldwide, we highly recommend that preventive and control measures be developed and implemented through international collaboration.

This research was supported by the Vietnam National University of Agriculture, Vietnam, and by BioNano Health Guard Research Center, funded by the Ministry of Science and Information and Communications Technology of South Korea, as a Global Frontier Project (2013M3A6B2078954).

About the Author

Dr. Le is a veterinarian and associate professor at Vietnam National University of Agriculture, with a main research interest in virology, including viruses of swine and birds.

References

1. Ge S, Li J, Fan X, Liu F, Li L, Wang Q, et al. Molecular characterization of African swine fever virus, China, 2018. *Emerg Infect Dis.* 2018;24:2131–3. <http://dx.doi.org/10.3201/eid2411.181274>
2. Kolbasov D, Titov I, Tsybanov S, Gogin A, Malogolovkin A. African swine fever virus, Siberia, Russia, 2017. *Emerg Infect Dis.* 2018;24:796–8. <http://dx.doi.org/10.3201/eid2404.171238>
3. Bastos ADS, Penrith M-L, Crucière C, Edrich JL, Hutchings G, Roger F, et al. Genotyping field strains of African swine fever virus by partial p72 gene characterisation. *Arch Virol.* 2003;148:693–706.
4. Malogolovkin A, Burmakina G, Titov I, Sereda A, Gogin A, Baryshnikova E, et al. Comparative analysis of African swine fever virus genotypes and serogroups. *Emerg Infect Dis.* 2015;21:312–5. <http://dx.doi.org/10.3201/eid2102.140649>
5. Guinat C, Gogin A, Blome S, Keil G, Pollin R, Pfeiffer DU, et al. Transmission routes of African swine fever virus to domestic pigs: current knowledge and future research directions. *Vet Rec.* 2016;178:262–7. <http://dx.doi.org/10.1136/vr.103593>

Address for correspondence: Van Phan Le, Vietnam National University of Agriculture, Hanoi, Vietnam; email: letranphan@gmail.com; and Daesub Song, Korea University, College of Pharmacy, 2511, Sejong-ro Sejong 30019, South Korea; email: sds1@korea.ac.kr

Low-Grade Endemicity of Opisthorchiasis, Yangon, Myanmar

Woon-Mok Sohn, Bong-Kwang Jung, Sung-Jong Hong, Keon-Hoon Lee, Jong-Bok Park, Hyun-Seung Kim, Seon Cho, Thi Thi Htoon, Htay Htay Tin, Jong-Yil Chai

Author affiliations: Gyeongsang National University College of Medicine, Jinju, South Korea (W.-M. Sohn); Korea Association of Health Promotion, Seoul, South Korea (B.-K. Jung, K.-H. Lee, J.-B. Park, H.-S. Kim, S. Cho, J.-Y. Chai); Chung-Ang University, Seoul (S.-J. Hong); National Health Laboratory, Yangon, Myanmar (T.T. Htoon, H.H. Tin)

DOI: <https://doi.org/10.3201/eid2507.190495>

We performed an epidemiologic survey of opisthorchiasis in Yangon, Myanmar. The fecal egg-positive rate of residents was 0.7%, and we recovered an adult fluke after chemotherapy and purging of an egg-positive resident. We detected *Opisthorchis viverrini* metacercariae in freshwater fish. We found the Yangon area to have low-grade endemicity of opisthorchiasis.

The liver fluke *Opisthorchis viverrini*, a well-known cause of cholangiocarcinoma, is distributed predominantly in Southeast Asia countries (1,2). In Myanmar, health officials thought that opisthorchiasis might not occur because the population traditionally does not consume raw or undercooked fish. However, 2 recent reports have documented the presence of *O. viverrini* eggs or flukes in Myanmar (3,4). In 2017, a molecular study detected a mitochondrial cytochrome *c* oxidase subunit I (*cox1*) gene of *O. viverrini* from the fecal samples of persons in a rural area near Yangon (3); however, adult flukes were not recovered from the egg-positive persons. Another study in 2018 detected *O. viverrini* metacercariae from freshwater fish (*Puntius brevis*) caught in central

Table. Rates of helminth egg infection, by species, among 2,057 persons in 3 districts of Yangon, Myanmar

District	No. persons examined	No. (%) positive					Total
		<i>Ascaris lumbricoides</i>	<i>Trichuris trichiura</i>	<i>Enterobius vermicularis</i>	<i>Opisthorchis viverrini</i>	Other*	
Hlaing-Thayar	682	17 (2.5)	90 (13.2)	2 (0.3)	2 (0.3)	2 (0.3)	113 (16.6)
South Dagon	672	83 (13.2)	90 (14.4)	11 (1.8)	8 (1.3)	4 (0.6)	196 (31.3)
North Dagon	748	66 (8.8)	94 (12.6)	6 (0.8)	4 (0.5)	5 (0.7)	175 (23.4)
Total	2,057	166 (8.1)	274 (13.3)	19 (0.9)	14 (0.7)	11 (0.5)	484 (23.5)

*Includes 2 cases of hookworm infection and 1 case each of *Taenia* sp. and *Trichostrongylus* sp. infection.

Myanmar and obtained adult flukes from experimentally infected hamsters (4).

We recently observed a low-grade endemicity of *O. viverrini* infection among residents in the Yangon area. We also recovered an adult fluke (Appendix Figure, panel A, <https://wwwnc.cdc.gov/EID/article/25/7/19-0495-App1.pdf>) from an egg-positive resident and detected metacercariae in freshwater fish caught in Yangon.

In December 2015, we performed fecal examinations on 2,057 residents in 3 districts of Yangon (North Dagon, South Dagon, and Hlaing-Thayar) by using the Kato-Katz technique. The total number of helminth egg-positive cases was 484 (23.5%); we recovered eggs of *Trichuris trichiura* whipworms (13.3%), *Ascaris lumbricoides* roundworms (8.1%), *Enterobius vermicularis* pinworms (0.9%), *O. viverrini* flukes (0.7%), and other helminth species (0.5%) (Table).

Among the 14 residents positive for *O. viverrini* eggs (some possibly having mixed infections with minute intestinal fluke species such as *Haplorchis* spp.) (Table; Appendix Figure, panel B), 2 agreed to undergo worm recovery after treatment with praziquantel (40 mg/kg in a single dose) and purging with 25–30 g of MgSO₄. Fecal examination and anthelmintic treatment of the residents were officially approved by Myanmar's Ministry of Health and Sport, under the agreement of the South Korea-Myanmar International Collaboration on Intestinal Parasite Control for Schoolchildren in Myanmar (Ethics Review Committee approval no. 005117). Informed consent was received from each person.

The procedure of the worm recovery was as described previously (5). One adult fluke that looked like a liver fluke was recovered from 1 of these 2 residents. Minute intestinal fluke species, including *Haplorchis* spp., were not recovered. The adult fluke (Appendix Figure, panel A) was slender (11.1 × 1.5 mm) and had a small oral sucker (0.20 × 0.29 mm), large ventral sucker (0.51 × 0.59 mm), lobed ovary, 2 lobed testes, and a well-developed uterus with numerous eggs (25 × 14 μm). We confirmed the fluke to be an adult specimen of *O. viverrini*.

We also examined 10 species of freshwater fish (n = 160) purchased in a local market of North Dagon to detect *O. viverrini* metacercariae. The fish were transported on ice to Gyeongsang National University College of Medicine (Jinju, South Korea), and examined by using the artificial digestion method (6). We detected *O. viverrini* metacercariae in 4 species of fish (forest snakehead [*Channa lucius*],

5/5, 100%; striped snakehead [*C. striata*] 1/29, 3.5%; climbing perch [*Anabas testudineus*] 1/14, 7.1%; and unspecified *Puntioplites* sp., 1/15, 6.7%) (Appendix Figure, panels C, D). In forest snakehead fish, the average metacercarial density per fish was 24.4 (range 1–52). The metacercariae were round to elliptical and were 150–188 μm (average 165 μm) × 98–140 μm (average 122 μm) in size.

The metacercariae were fed orally to 2 golden hamsters (*Mesocricetus auratus*) to recover adult flukes. At day 50 postinfection, 20 adult flukes were recovered from the biliary tracts of the hamsters. The animal experiment was performed in accordance with the guidelines of Gyeongsang National University College of Medicine. The adult flukes were slender (average size 5.1 × 1.2 mm) and had the characteristic features of *O. viverrini* (Appendix Figure, panel F).

Opisthorchiasis is one of the most prevalent food-borne helminthiases in Thailand, Laos, Cambodia, and Vietnam (2,5–9). For example, in Laos, opisthorchiasis is prevalent in the central and southern lowlands along the Mekong River, including Vientiane Municipality and Savannakhet Province, where the rates of *O. viverrini* egg recovery (mixed with some minute intestinal flukes) among residents along rivers were 53.3% (Vientiane) and 67.1% (Savannakhet) (5,7). In Cambodia, eastern localities (e.g., Kratie Province, 4.6% egg-positive rate) and southern localities (Kampong Cham Province, 24.0% egg-positive rate, and Takeo Province, 23.8%–47.5% egg-positive rates) along the Mekong River were found to be endemic foci (8,9). From 2 egg-positive residents in Takeo Province, 34 adult *O. viverrini* flukes were recovered (10).

In our study, the *O. viverrini* egg-positive rate of residents in surveyed areas of Myanmar was 0.7%, much lower than the 4.6%–67.1% rates in Laos and Cambodia (5–9). Also, only 1 adult fluke was recovered in 1 egg-positive case, whereas 34 adult specimens were recovered in 2 residents in Cambodia (10). Thus, we concluded that the Yangon area of Myanmar has low-grade endemicity of *O. viverrini*.

Acknowledgments

We appreciate the kind help of the staff of the National Health Laboratory of the Ministry of Health and Sport, Yangon, Myanmar, in the collection of fecal samples of the residents. We also appreciate the staff of the Korea

Association of Health Promotion, Seoul, South Korea, who participated in this survey. Special thanks to the staff of Department of Parasitology and Tropical Medicine, Gyeongsang National University College of Medicine, for their help in experimental studies with hamsters.

About the Author

Dr. Sohn is a professor of parasitology and tropical medicine at Gyeongsang National University College of Medicine, Jinju, South Korea. His primary research interests are fishborne parasites and parasite fauna.

References

1. Fürst T, Keiser J, Utzinger J. Global burden of human food-borne trematodiasis: a systematic review and meta-analysis. *Lancet Infect Dis*. 2012;12:210–21. [http://dx.doi.org/10.1016/S1473-3099\(11\)70294-8](http://dx.doi.org/10.1016/S1473-3099(11)70294-8)
2. Sripa B, Echaubard P. Prospects and challenges towards sustainable liver fluke control. *Trends Parasitol*. 2017;33:799–812. <http://dx.doi.org/10.1016/j.pt.2017.06.002>
3. Aung WPP, Htoon TT, Tin HH, Thinn KK, Sanpool O, Jongthawin J, et al. First report and molecular identification of *Opisthorchis viverrini* infection in human communities from lower Myanmar. *PLoS One*. 2017;12:e0177130 <http://dx.doi.org/10.1371/journal.pone.0177130>
4. Sanpool O, Aung WPP, Rodpai R, Maleewong W, Intapan PM. Human liver fluke *Opisthorchis viverrini* (Trematoda, Opisthorchiidae) in central Myanmar: new records of adults and metacercariae identified by morphology and molecular analysis. *Acta Trop*. 2018;185:149–55. <http://dx.doi.org/10.1016/j.actatropica.2018.05.009>
5. Chai JY, Park JH, Han ET, Guk SM, Shin EH, Lin A, et al. Mixed infections with *Opisthorchis viverrini* and intestinal flukes in residents of Vientiane Municipality and Saravane Province in Laos. *J Helminthol*. 2005;79:283–9. <http://dx.doi.org/10.1079/JOH2005302>
6. Sohn WM, Yong TS, Eom KS, Pyo KH, Lee MY, Lim H, et al. Prevalence of *Opisthorchis viverrini* infection in humans and fish in Kratie Province, Cambodia. *Acta Trop*. 2012;124:215–20. <http://dx.doi.org/10.1016/j.actatropica.2012.08.011>
7. Chai JY, Han ET, Guk SM, Shin EH, Sohn WM, Yong TS et al. High prevalence of liver and intestinal fluke infections among residents of Savannakhet Province in Laos. *Korean J Parasitol*. 2007;45:213–8.
8. Yong TS, Shin EH, Chai JY, Sohn WM, Eom KS, Lee DM, et al. High prevalence of *Opisthorchis viverrini* infection in a riparian population in Takeo Province, Cambodia. *Korean J Parasitol*. 2012;50:173–6. <http://dx.doi.org/10.3347/kjp.2012.50.2.173>
9. Yong TS, Chai JY, Sohn WM, Eom KS, Jeoung HG, Hoang EH, et al. Prevalence of intestinal helminths among inhabitants of Cambodia (2006–2011). *Korean J Parasitol*. 2014;52:661–6. <http://dx.doi.org/10.3347/kjp.2014.52.6.661>
10. Sohn WM, Shin EH, Yong TS, Eom KS, Jeoung HG, Sinuon M, et al. Adult *Opisthorchis viverrini* flukes in humans, Takeo, Cambodia. *Emerg Infect Dis*. 2011;17:1302–4. <http://dx.doi.org/10.3201/eid1707.102071>

Address for correspondence: Jong-Yil Chai, Korea Association of Health Promotion, Institute of Parasitic Diseases, 333 Hwagok-ro, Seoul 07649, South Korea; email: cjy@snu.ac.kr

LETTERS

Nontoxigenic *Corynebacterium diphtheriae* Infections, Europe

Aleksandra A. Zasada, Magdalena Rzeczowska

Author affiliation: National Institute of Public Health–National Institute of Hygiene, Warsaw, Poland

DOI: <https://doi.org/10.3201/eid2507.180995>

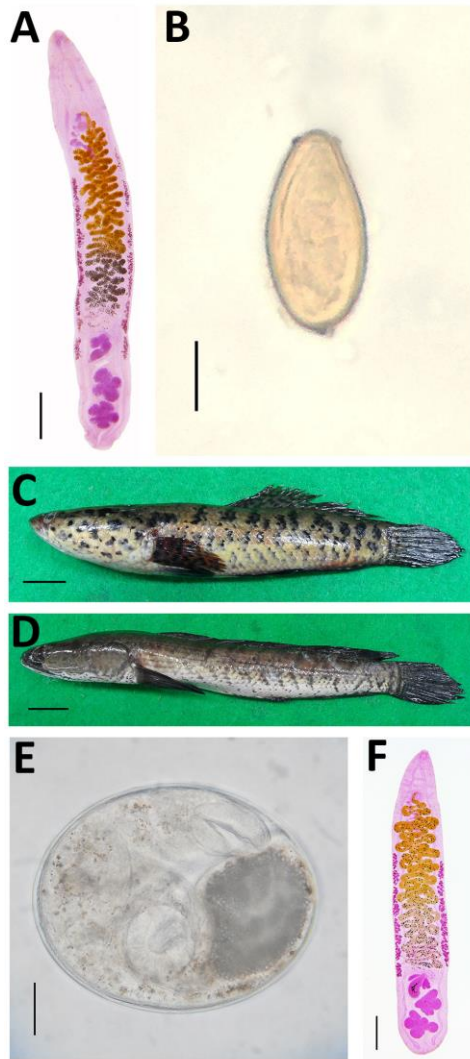
To the Editor: We read with interest the article by Dangel et al. analyzing nontoxigenic *Corynebacterium diphtheriae* infections in northern Germany during 2016–2017 (1). Among the cases, 2 patients originated from Poland; each experienced an invasive disease, 1 endocarditis and 1 sepsis. Poland and Germany are neighboring countries. In Poland, we also observed an accumulation of nontoxigenic *C. diphtheriae* infections during 2016–2017. In both countries, most infections were caused by isolates belonging to

sequence type (ST) 8 biotype gravis, which we previously suspected of having increased pathogenic properties (2).

ST8 has been causing infection in Poland since 2004 and was isolated in Russia before that (2,3). However, the first ST8 isolate was not obtained in northern Germany until 2015, suggesting spread of pathogenic ST8 from eastern to western Europe. Comparing epidemiologic data from Poland during 2012–2017, we confirmed 48 cases of nontoxigenic *C. diphtheriae*, increasing from 3 cases in 2012 to 20 in 2017. As seen in northern Germany, most affected patients in Poland were male (>80%), and ≈30% of patients were homeless, alcohol addicted, or both. We did not identify HIV as a risk factor. We saw a sharp increase in cases during the time of the Dangel et al. report as well, from 10 cases in 2016 to 20 in 2017. Nevertheless, in Poland, 40% of isolates (19/48) during 2012–2017 were obtained from invasive infections, whereas in Germany only 9 isolates (≈12%) were obtained from cases with severe invasive complications. None of the cases in Poland were related epidemiologically.

Low-Grade Endemicity of Opisthorchiasis, Yangon, Myanmar

Appendix



Appendix Figure. *Opisthorchis viverrini* from a human case and an experimental hamster, fish hosts, and a metacercaria. A) Adult fluke of *O. viverrini* recovered from a human case (scale bar = 1 mm). B) Egg of *Opisthorchis viverrini* detected by formalin-ether sedimentation of a surveyed resident (scale bar = 10 μm). C– D) Fish hosts. *Channa lucius* (C) (scale bar = 2 cm); *Channa striata* (D) (scale bar = 2 cm). E) Metacercaria of *O. viverrini* from a fish purchased in Yangon (scale bar = 50 μm). F) Adult fluke of *O. viverrini* recovered from an experimentally infected hamster (scale bar = 0.5 mm).