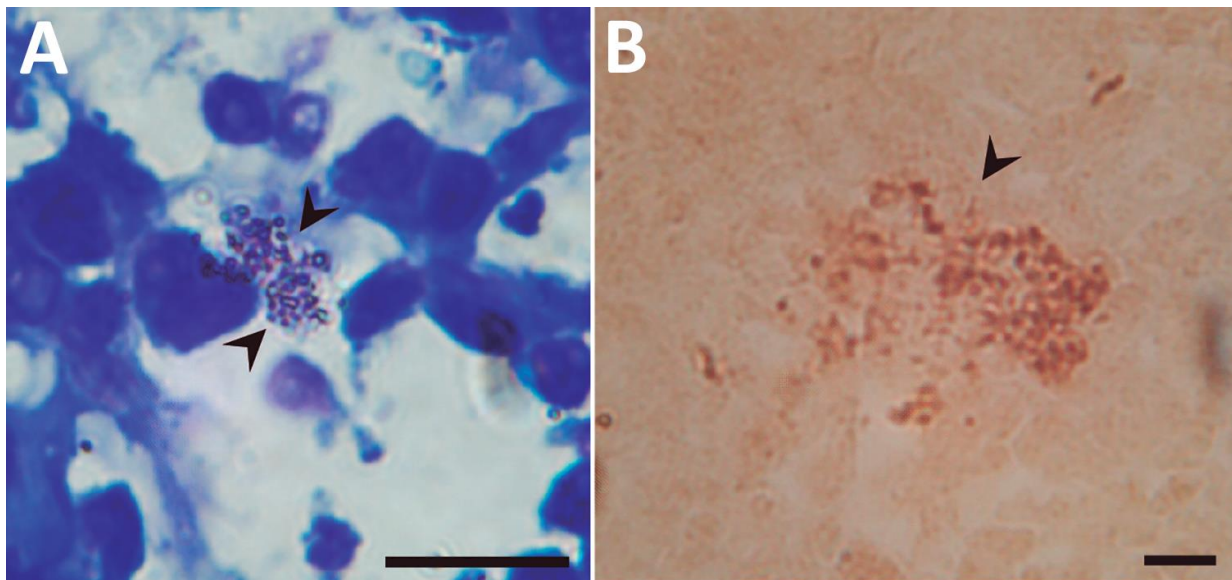


# Leishmaniasis in Norway Rats in Sewers, Barcelona, Spain

## Appendix



**Appendix Figure.** Histological sections of naturally infected rat spleens with *Leishmania* (arrows). A) Giemsa stain. B) Immunolabeled amastigotes by the streptavidin–biotin peroxidase complex method (1). Scale bars represent 10  $\mu\text{m}$ .

## Reference

1. Tafuri WL, Santos RL, Arantes RM, Gonçalves R, de Melo MN, Michalick MS, et al. An alternative immunohistochemical method for detecting *Leishmania* amastigotes in paraffin-embedded canine tissues. *J Immunol Methods*. 2004;292:17–23. <http://dx.doi.org/10.1016/j.jim.2004.05.009>