

- products, Minnesota and Wisconsin, 2002–2004. *Emerg Infect Dis.* 2007;13:838–46. <http://dx.doi.org/10.3201/eid1306.061576>
6. Overdeest I, Willemsen I, Rijnsburger M, Eustace A, Xu L, Hawkey P, et al. Extended-spectrum  $\beta$ -lactamase genes of *Escherichia coli* in chicken meat and humans, the Netherlands. *Emerg Infect Dis.* 2011;17:1216–22. <http://dx.doi.org/10.3201/eid1707.110209>
  7. Dutil L, Irwin R, Finley R, Ng LK, Avery B, Boerlin P, et al. Ceftiofur resistance in *Salmonella enterica* serovar Heidelberg from chicken meat and humans, Canada. *Emerg Infect Dis.* 2010;16:48–54. <http://dx.doi.org/10.3201/eid1601.090729>
  8. US Food and Drug Administration. Cephalosporin order of prohibition goes into effect. April 6, 2012 [cited 2012 Apr 20]. <http://www.fda.gov/Animal-Veterinary/NewsEvents/CVMUpdates/ucm299054.htm>

---

Address for correspondence: Peter Collignon, Infectious Diseases and Microbiology, Canberra Hospital, PO Box 11, Woden. ACT 2607, Australia; email: [peter.collignon@act.gov.au](mailto:peter.collignon@act.gov.au)

---

## Autochthonous Human Schistosomiasis, Malaysia

**To the Editor:** In Malaysia, the only histologically diagnosed autochthonous cases of human schistosomiasis were reported in the 1970s, all in rural aborigine (Orang Asli) populations (1–3) (online Technical Appendix Figure 1, [wwwnc.cdc.gov/EID/article/19/8/12-1710-Techapp1.pdf](http://wwwnc.cdc.gov/EID/article/19/8/12-1710-Techapp1.pdf)). The fact that the infection had been found only among aborigines had led to the proposal of a distinct unknown schistosome with an animal reservoir causing sylvatic infections (2,3). Consequently, during the 1980s, *Schistosoma malayensis* n. sp. was described from intermediate snail (*Robertsiella* sp.) and final mammalian hosts (*Rattus muelleri* and *R. tiomanicus* [4]). *S. malayensis* is closely related to *S.*

*mekongi* and differs genetically from the latter by  $\approx 10\%$ . Both species differ from *S. japonicum* by 25% (5), and adult and ova morphologies are similar (4). Few transmission sites for this new *S. japonicum*–complex schistosome species were identified in rural areas (4). We report after 30 years the histologic finding of *S. malayensis*–like eggs in the liver of a Malay man and discuss public health implications.

A 29-year-old male nonaboriginal Malay from Subang Jaya in Selangor State, Peninsular Malaysia, had died suddenly of an intoxication in 2011. According to his mother, he had reported hematuria and dysuria during adolescence. Similar symptoms had reoccurred 10 years later, accompanied by constipation. The patient had never been outside of Malaysia, and he had gone bomb fishing for many years in Sungai Lepar Utara, a river near his village (Felda Tekam Utara, Jerantut, Pahang; 3°52'30"N, 102°49'2"E). No tests on blood or feces were performed before his death. An autopsy was conducted in Sungai Buloh Hospital, and gross pathology showed a normal heart, kidneys, and brain. The lungs were edematous and congested. The liver also was congested, but no macroscopic lesions were seen. Toxicology investigations showed methadone and a derivative in his blood and urine. During a routine histologic examination, several granulomas with intensive lymphocyte, monocyte, and eosinophil infiltration surrounding clusters of ovoidal eggs were found in the liver (Figure; online Technical Appendix Figure 2). Serial sectioning showed that the eggs contained miracidia and had the overall appearance of *S. malayensis*–like ova 50  $\mu\text{m}$  long  $\times$  28  $\mu\text{m}$  wide. The ova were not operculated and had no bipolar plugs; the thin yellowish shell was not striated, but a knob-like structure was seen laterally. Morphologic differential diagnoses included eggs of *Capillaria hepatica* (bipolar striated ova in liver), *Dicrocoelium* (slightly

smaller operculated ova typically found in feces or bile), and the similar *Eurytrema* (thick-walled operculated ova in feces).

Schistosomiasis is endemic in many developing countries and infects >207 million persons living in rural agricultural areas (6). In Asia, *S. japonicum*, *S. mekongi*, and *S. malayensis* cause human infection (7), with *S. japonicum* being the most dangerous. In Malaysia, *S. malayensis*, in addition to *S. spindale*, *S. nasale*, *S. incognitum*, *Trichobilhazia brevis*, and *Pseudobilharziella lonchurae*, is known to occur in wildlife (8). The first known case of human schistosomiasis in Malaysia was discovered in 1973 during an autopsy of an aborigine. *Schistosoma* eggs resembling those of *S. japonicum* were found in liver tissue (1). A subsequent retrospective autopsy study revealed additional cases with these *Schistosoma japonicum*–like ova in the rural aboriginal population, resulting in an overall prevalence of 3.9% (2). Several attempts to recover eggs from feces from the Orang Asli population in peninsular Malaysia (3), a biopsy-positive Orang Asli (3), and serologically positive persons (9, and others) were unsuccessful, however, which was attributed to the zoonotic nature of *S. malayensis* and thus missing adaptation to the human host. Whether hematuria, a typical sign of *S. haematobium* infection, as seen in the patient reported here also was caused by *S. malayensis* disease remains unclear because symptoms of the latter have not been reported. Serologic surveys for schistosomiasis in peninsular Malaysia showed prevalences of 4%–25% in selected rural populations (9). Because infected *Robertsiella* snails had been found almost exclusively in small rivers (4,9–habitats like the Sungai Lepar Utara River in our current report—we suspect that the patient most likely became infected while fishing. The travel history may not be accurate

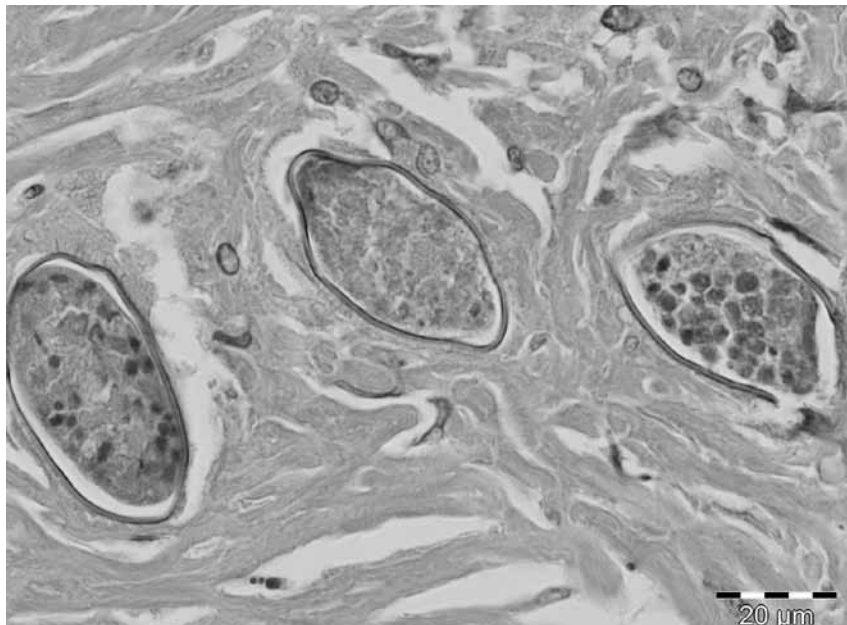


Figure. Close-up of liver granuloma with section through 3 *Schistosoma malayensis*-like ova embedded in dense fibrous tissue. The thin-walled, nonstriated helminth ova are not operculated and contain nonvital miracidial cells. Hematoxylin and eosin stain; original magnification  $\times 100$ .

because it was obtained from a relative, and possible unreported drug-related travel by the patient to neighboring countries cannot be fully excluded. *R. muelleri*, the jungle rat and definitive host for *S. malayensis*, is often seen at river banks (4), and rodent feces could have contaminated the water with schistosome eggs.

Future field studies are needed to identify focal hot spots of sylvatic transmission by snail examination and seroprevalence studies of persons living in rural areas, especially the Orang Asli population. Moreover, in light of growing ecotourism, which also encompasses stays at remote Orang Asli villages and canoeing on small streams (10), appropriate public health measures, such as rodent and snail control near tourist sites, should be implemented.

#### Acknowledgements

We express our gratitude to Khalid Yusoff for his support in providing the research facilities. We also thank the Hospital Sungai Buloh for the cooperation in preparing the slides and specimens.

#### Baha Latif, Chong Chin Heo, Rahimi Razuin, Devi V. Shamalaa, and Dennis Tappe

Author affiliations: Universiti Teknologi MARA, Shah Alam, Malaysia (B. Latif, C.C. Heo); Hospital Sungai Buloh, Sungai Buloh, Malaysia (R. Razuin, D.V. Shamalaa); and University of Würzburg, Würzburg, Germany (D. Tappe)

DOI: <http://dx.doi.org/10.3201/eid1908.121710>

#### References

1. Murugasu R, Dissanaik AS. First case of schistosomiasis in Malaysia. *Trans R Soc Trop Med Hyg.* 1973;67:880. [http://dx.doi.org/10.1016/0035-9203\(73\)90017-5](http://dx.doi.org/10.1016/0035-9203(73)90017-5)
2. Leong SH, Murugasu R, Chong KC. Schistosomiasis in the Orang Asli (report of 9 cases). In: *Proceeding of the 10th Malaysian-Singapore Congress of Medicine*. Singapore: Stamford College Press; 1975; p.184-6.
3. Murugasu R, Wang F, Dissanaik AS. *Schistosoma japonicum*-type infection in Malaysia—report of the first living case. *Trans R Soc Trop Med Hyg.* 1978;72:389-91. [http://dx.doi.org/10.1016/0035-9203\(78\)90133-5](http://dx.doi.org/10.1016/0035-9203(78)90133-5)
4. Greer GJ, Ow-Yang CK, Yong HS. *Schistosoma malayensis* n. sp.: a *Schistosoma japonicum*-complex schistosome from Peninsular Malaysia. *J Parasitol.* 1988;74:471-80. <http://dx.doi.org/10.2307/3282058>
5. Le TH, Blair D, McManus DP. Revisiting the question of limited genetic variation within *Schistosoma japonicum*. *Ann Trop Med Parasitol.* 2002;96:155-64. <http://dx.doi.org/10.1179/000349802125000268>
6. Oliveira G, Rodrigues NB, Romanha AJ, Bahia D. Genome and genomics of schistosomes. *Can J Zool.* 2004;82:375-90. <http://dx.doi.org/10.1139/z03-220>
7. Leshem E, Meltzer E, Marva E, Schwartz E. Travel-related schistosomiasis acquired in Laos. *Emerg Infect Dis.* 2009;15:1823-6. <http://dx.doi.org/10.3201/eid1511.090611>
8. Krishnasamy M, Chong NL, Ambu S, Jeffery J, Oothuman P, Edariah AB. Schistosomiasis in Malaysia, with special reference to *Schistosoma spindale*, the causative agent of cercarial dermatitis. *Trop Biomed.* 2001;18:51-64.
9. Greer GJ, Anuar H. Serological evidence of schistosomiasis among Orang Asli from three areas of Peninsular Malaysia. *Southeast Asian J Trop Med Public Health.* 1984;15:303-12.
10. Sejvar J, Bancroft E, Winthrop K, Bettinger J, Bajani M, Bragg S, et al. Leptospirosis in "Eco-Challenge" athletes, Malaysian Borneo, 2000. *Emerg Infect Dis.* 2003;9:702-7. <http://dx.doi.org/10.3201/eid0906.020751>

Address for correspondence: Baha Latif, Faculty of Medicine, Universiti Teknologi, MARA, Jalan Hospital, 47000, Sungai Buloh, Selangor, Malaysia; email: bahalatif@yahoo.com

## Asian Musk Shrew as a Reservoir of Rat Hepatitis E Virus, China

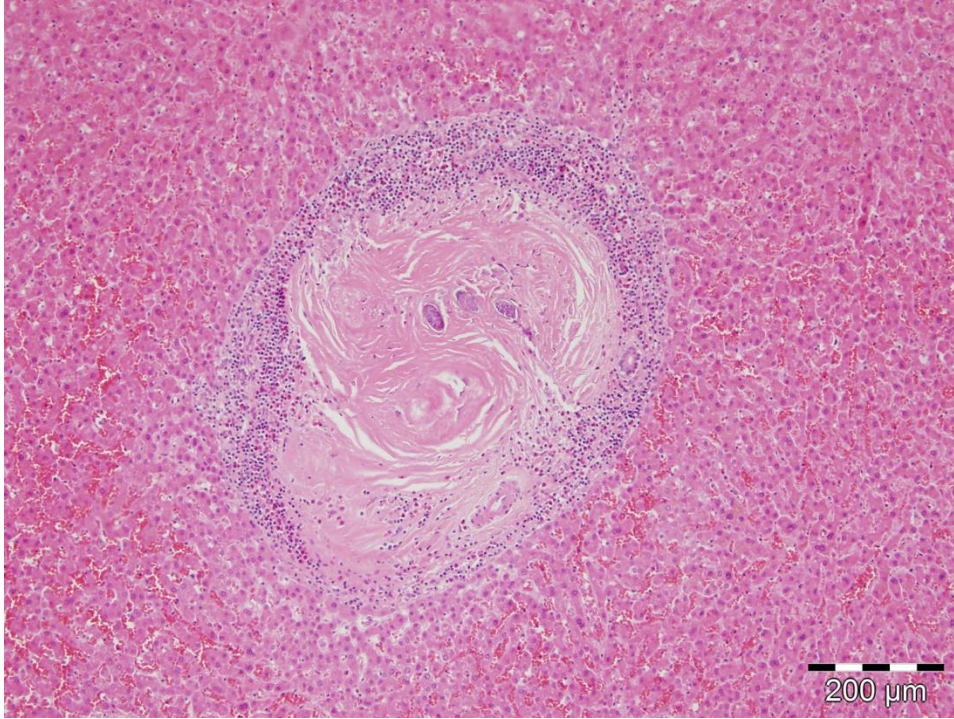
**To the Editor:** Rat hepatitis E virus (HEV), a member of genus *Hepevirus* in the family *Hepeviridae*, was first detected in Norway rats in Germany in 2010 (1, 2). Since then, this rat HEV has been detected in multiple wild rat species in the United States, Vietnam, Germany, and Indonesia (3-7). Studies have shown that rat HEV failed to infect rhesus monkeys and pigs,

# Autochthonous Human Schistosomiasis, Malaysia

## Technical Appendix



Technical Appendix Figure 1. Places of residence in Peninsular Malaysia (left) of the schistosomiasis-infected Orang Asli from the 1970s. The origin of the patient from the current report is marked with a red X in a circle; previous cases are marked with green Xs without circles. Three cases in persons also infected with *Schistosoma japonicum*-like eggs in Sabah, Malaysian Borneo (right), were immigrants and thus not considered autochthonous.



Technical Appendix Figure 2. Section of liver showing a helminth egg granuloma. The ova are embedded in fibrous tissue surrounded by a wall of eosinophils, lymphocytes, and monocytes. Hematoxylin and eosin stain, original magnification  $\times 10$ .