

**Da-Yan Wang,<sup>1</sup> Shun-Xiang Qi,<sup>1</sup>  
Xi-Yan Li, Jun-Feng Guo,  
Min-Ju Tan, Guang-Yue Han,  
Yan-Fang Liu, Yu Lan,  
Lei Yang, Wei-Juan Huang,  
Yan-Hui Cheng, Xiang Zhao,  
Tian Bai, Zhao Wang,  
He-Jiang Wei, Ning Xiao,  
and Yue-Long Shu**

Authors affiliations: National Institute for Viral Disease Control and Prevention, China CDC, Beijing, People's Republic of China (D.-Y. Wang, X.-Y. Li, J.-F. Guo, M.-J. Tan, Y. Lan, L. Yang, W.-J. Huang, Y.-H. Cheng, X. Zhao, T. Bai, Z. Wang, N. Xiao, H.-J. Wei, Y.-L. Shu); and Hebei Center for Disease Control and Prevention, Hebei Province, People's Republic of China (S.-X. Qi, G.-Y. Han, Y.-F. Liu)

DOI: <http://dx.doi.org/10.3201/eid1910.130420>

## References

1. World Health Organization. Standardization of terminology for the variant A(H3N2) virus recently infecting humans [cited 2013 Mar 12]. [http://www.who.int/influenza/gisrs\\_laboratory/terminology\\_ah3n2v/en/indexhtml](http://www.who.int/influenza/gisrs_laboratory/terminology_ah3n2v/en/indexhtml).
2. Myers KP, Olsen CW, Gray GC. Cases of swine influenza in humans: a review of the literature. *Clin Infect Dis*. 2007;44:1084–8. <http://dx.doi.org/10.1086/512813>
3. Adiego Sancho B, Omenaca Teres M, Martínez Cuenca S, Rodrigo Val P, Sanchez Villanueva P, Casas I, et al. Human case of swine influenza A (H1N1), Aragon, Spain, November 2008. *Euro Surveill*. 2009;14: pi.19120.
4. Qi X, Cui L, Jiao Y, Pan Y, Li X, Zu R, et al. Antigenic and genetic characterization of a European avian-like H1N1 swine influenza virus from a boy in China in 2011. *Arch Virol*. 2013; 158: 39–53.
5. Yang H, Qiao C, Tang X, Chen Y, Xin X, Chen H. Human infection from swine-like influenza A (H1N1) viruses in pigs, China. *Emerg Infect Dis*. 2012;18:1144–6. <http://dx.doi.org/10.3201/eid1807.120009>
6. Matrosovich M, Tuzikov A, Bovin N, Gambaryan A, Klimov A, Castrucci MR, et al. Early alterations of the receptor-binding properties of H1, H2, and H3 avian influenza virus hemagglutinins after their introduction into mammals. *J Virol*. 2000;74:8502–12. <http://dx.doi.org/10.1128/JVI.74.18.8502-8512.2000>
7. Vijaykrishna D, Smith GJ, Pybus OG, Zhu H, Bhatt S, Poon LL, et al. Long-term

- evolution and transmission dynamics of swine influenza A virus. *Nature*. 2011;473:519–22. <http://dx.doi.org/10.1038/nature10004>
8. Vijaykrishna D, Poon LL, Zhu HC, Ma SK, Li OT, Cheung CL, et al. Reassortment of pandemic H1N1/2009 influenza A virus in swine. *Science*. 2010;328:1529. <http://dx.doi.org/10.1126/science.1189132>
  9. Zhu H, Zhou B, Fan X, Lam TT, Wang J, Chen A, et al. Novel reassortment of Eurasian Avian-like and pandemic/2009 influenza viruses in swine: infectious potential to humans. *J Virol*. 2011; 85:10432–9. <http://dx.doi.org/10.1128/JVI.05352-11>

Address for correspondence: Yue-long Shu, National Institute for Viral Disease Control and Prevention, Chinese Centre for Disease Control and Prevention, Beijing, 102206, People's Republic of China; email: [yshu@cnic.org.cn](mailto:yshu@cnic.org.cn).

## Novel Bat Coronaviruses, Brazil and Mexico

**To the Editor:** Bats are now recognized as natural reservoirs for many families of viruses that can cross species barriers and cause emerging diseases of humans and animals. Protecting humans against emerging diseases relies on identifying natural reservoirs for such viruses and surveillance for host-jumping events. The emergence of the Middle East respiratory syndrome coronavirus (MERS-CoV) on the Arabian Peninsula (1) further justifies increased surveillance for coronaviruses (CoVs) in bats. MERS-CoV most likely is a zoonotic virus from a bat reservoir and is associated with high case-fatality rates among humans. The existence of a diverse array of alphacoronaviruses in bats in the United States, Canada, and Trinidad has been reported (2–6). Recently, a possible new alphacoronavirus was detected in an urban roost of bats in southern Brazil (7), and a survey of bats in southern Mexico reported 8 novel alphacoronaviruses and 4 novel

betacoronaviruses, 1 with 96% similarity to MERS-CoV (8). These findings expand the diversity and range of known bat coronaviruses and increase the known reservoir for potential emerging zoonotic CoVs.

Expanding on our previous work (2,3), we analyzed samples from 97 bats from Brazil and 75 bats from Mexico (Technical Appendix, [wwwnc.cdc.gov/EID/article/19/10/13-0525-Techapp1.pdf](http://wwwnc.cdc.gov/EID/article/19/10/13-0525-Techapp1.pdf)). During 2007–2010, intestinal samples were collected from bats of 10 species in northwest São Paulo state in southeastern Brazil. These bats had been submitted to the University Estadual Paulista for rabies testing as a result of epidemiologic surveillance or, in some cases, because of possible or known contact with humans. During 2011–2012, as part of an ongoing rabies surveillance project, intestinal samples were collected from bats of 12 species in their usual habitats in Jalisco state in midwestern Mexico. Bats from a variety of species, including insectivorous, nectarivorous, frugivorous, and hematophagous bats, were included in this study for the purpose of obtaining a diverse array of potential exposures. Intestines were collected and stored, and RNA was purified as described (2). CoV RNA was detected by using a pancoronavirus PCR selective for the RNA-dependent RNA polymerase gene, and amplicons were sequenced as described (3). Virus isolation was not attempted as part of this study.

From 1 of 17 *Molossus rufus* bats and 1 of 8 *Molossus molossus* bats, an identical novel alphacoronavirus was detected (BatCoV-*M.rufus*28/Brazil/2010, GenBank accession no. KC886321). Both specimens were collected in Brazil during 2010 from adult male bats that had been found in urban areas on residential property. The 412-nt sequence of this virus was most closely related to alphacoronaviruses detected in *Eptesicus fuscus* bats in North America (82% nt

<sup>1</sup>These authors contributed equally to this article.

identity), *Myotis australis* bats in Australia (77% nt identity), *Miniopterus* bats in Kenya (77% nt identity), and *Rhinolophus* bats in Hong Kong (77% nt identity) (Figure). Bats of the genus *Molossus* are insectivorous; their geographic range is restricted to the New World, from northern Mexico to northern Argentina.

A novel betacoronavirus (presumably group C) was detected in a specimen from 1 of 4 *Pteronotus davyi* bats (BatCoV-*P.davyi*49/Mexico/2012, GenBank accession no. KC886322). This specimen was collected in 2012 from an adult male bat roosting in a cave in La Huerta, Mexico. The 439-nt sequence of this virus has 71% nt identity to the novel human group C betacoronavirus MERS-CoV and 72% nt identity

to various group D betacoronaviruses detected in *Rousettus*, *Pipistrellus*, and *Tylonycteris* bats in the Philippines, China, and Kenya (Figure). Bats of the species *P. davyi* (Davy's naked-backed bat) are insectivorous and are found from southern Mexico to the northern parts of South America. They prefer to roost in caves and man-made structures, such as mines.

In summary, we found a novel alphacoronavirus in bats from Brazil and a novel betacoronavirus in a bat from Mexico. Both viruses were detected in bats with known or potential contact with humans. Because the bats we sampled were mostly adult males, the prevalence of CoVs that we identified is probably an underestimation of the true incidence of CoVs in these

bat populations. For bats of other species, incidence of CoVs among juvenile and female bats is higher (2,9). Furthermore, we used a non-nested, broadly conserved CoV PCR, which might have limited the sensitivity of CoV RNA detection. The finding of a novel betacoronavirus in insectivorous bats in the New World is noteworthy. Three human CoVs (229E, SARS-CoV, and MERS-CoV) all have animal reservoirs of closely related viruses in Old World insectivorous bats (10) from which they most likely emerged, either directly or indirectly, into the human population. Ongoing surveillance for CoVs in wildlife and increased research efforts to better understand the factors associated with CoV host-switching events are warranted.

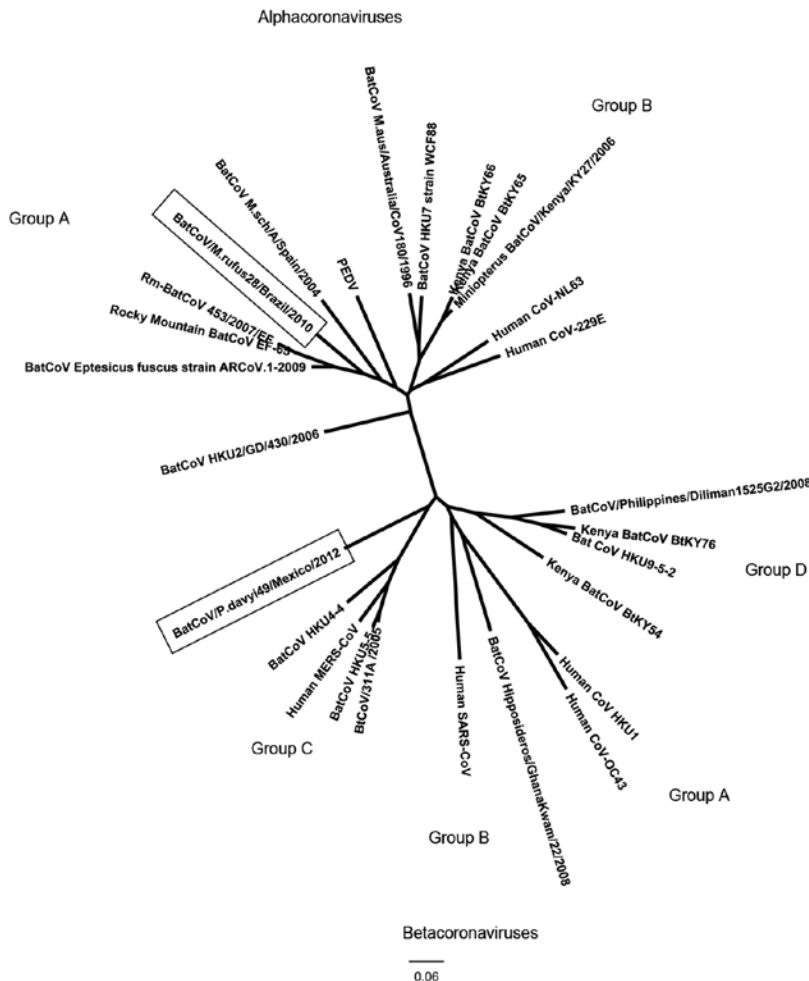


Figure. Phylogenetic tree showing relationships based on 412-nt and 439-nt sequences of a conserved region of gene 1b of BatCoV/Molossus rufus28/Brazil/2010 (alphacoronavirus) and BatCoV/Pteronotus davyi49/Mexico/2012 (betacoronavirus) to other known coronaviruses. Sequences were aligned by using ClustalW ([www.clustal.org/](http://www.clustal.org/)), phylogenetic analyses were conducted by using the neighbor-joining method and BioEdit ([www.mbio.ncsu.edu/BioEdit/BioEdit.html](http://www.mbio.ncsu.edu/BioEdit/BioEdit.html)), and trees were constructed by using FigTree version 1.4.0 (<http://tree.bio.ed.ac.uk/software/figtree/>). Boxes surround the novel alphacoronavirus detected in *Molossus rufus* and *M. molossus* bat specimens from São Paulo state in southeastern Brazil, and the novel betacoronavirus detected in a specimen from a *Pteronotus davyi* bat from Jalisco state in midwestern Mexico. GenBank accession numbers are AB539081.1, DQ648808.1, GU065420.1, HM211099.1, EF065512.1, EF065512.1, JX869059.2, GU065398.1, EF507794.1, FJ710054.1, JX537914.1, EF544566.1, EU834956.1, EF203064.1, GU065410.1, HQ728484.1, GU065409.1, HQ184049.1, DQ666339.1, HQ336974.1, DQ445911.1, KC210147.1, AY278741, NC\_002645.1, and NC\_005147.1. PEDV, porcine epidemic diarrhea virus. Scale bar indicates nucleotide substitutions per site.

## Acknowledgments

We thank Anaís Ruesga, Heriberto Verduzco M., Adrian Gutierrez A., Edgar Gómez, Carol Alexis, Jazmín Osorio, and Jansen de Araujo for help with capturing and dissecting bats. We thank Kathryn Holmes and Thomas M. Yuill for critically reviewing this manuscript and advising and facilitating this collaboration.

This study was funded by National Institutes of Health grant no. K08 AI-073525 (S.R.D.), by a fellowship from the Consejo Nacional para Ciencia y Tecnología of the Mexican federal government (S.G.R.), and by a fellowship from the Brazilian government agencies Coordenação de Aperfeiçoamento de Pessoal de Nível Superior and Conselho Nacional de Desenvolvimento Científico e Tecnológico (L.G.B.G.).

**Luiz Gustavo Bentim Góes,<sup>1</sup>  
 Sicilene Gonzalez Ruvalcaba,<sup>1</sup>  
 Angélica Almeida Campos,  
 Luzia Helena Queiroz,  
 Cristiano de Carvalho,  
 José Antonio Jerez,  
 Edison Luiz Durigon,  
 Luis Ignacio Iñiguez Dávalos,  
 and Samuel R. Dominguez**

Author affiliations: Universidade de São Paulo, São Paulo, Brazil (L.G.B. Góes, A.A. Campos, J.A. Jerez, E.L. Durigon); Universidad de Guadalajara, Jalisco, Mexico (S.G. Ruvalcaba, L.I. Iñiguez Dávalos); University Estadual Paulista, Araçatuba, Brazil (L.H. Queiroz, C. de Carvalho); and University of Colorado School of Medicine, Aurora, Colorado, USA (S.R. Dominguez)

DOI: <http://dx.doi.org/10.3201/eid1910.130525>

## References

- Zaki AM, van Boheemen S, Bestebroer TM, Osterhaus AD, Fouchier RA. Isolation of a novel coronavirus from a man with pneumonia in Saudi Arabia. *N Engl J Med*. 2012;367:1814–20. <http://dx.doi.org/10.1056/NEJMoa1211721>
- Osborne C, Cryan PM, O’Shea TJ, Oko LM, Ndaluca C, Calisher CH, et al. Alphacoronaviruses in New World bats:

- prevalence, persistence, phylogeny, and potential for interaction with humans. *PLoS ONE*. 2011;6:e19156. <http://dx.doi.org/10.1371/journal.pone.0019156>
- Dominguez SR, O’Shea TJ, Oko LM, Holmes KV. Detection of group 1 coronaviruses in bats in North America. *Emerg Infect Dis*. 2007;13:1295–300. <http://dx.doi.org/10.3201/eid1309.070491>
  - Carrington CV, Foster JE, Zhu HC, Zhang JX, Smith GJ, Thompson N, et al. Detection and phylogenetic analysis of group 1 coronaviruses in South American bats. *Emerg Infect Dis*. 2008;14:1890–3. <http://dx.doi.org/10.3201/eid1412.080642>
  - Donaldson EF, Haskew AN, Gates JE, Huynh J, Moore CJ, Frieman MB. Metagenomic analysis of the virome of three North American bat species: viral diversity between different bat species that share a common habitat. *J Virol*. 2010;84:13004–18. <http://dx.doi.org/10.1128/JVI.01255-10>
  - Misra V, Dumonceaux T, Dubois J, Willis C, Nadin-Davis S, Severini A, et al. Detection of polyoma and corona viruses in bats of Canada. *J Gen Virol*. 2009;90:2015–22. <http://dx.doi.org/10.1099/vir.0.010694-0>
  - Lima FE, Campos FS, Filho H, Batista HB, Junior P, Cibulski SP, et al. Detection of *Alphacoronavirus* in velvety free-tailed bats (*Molossus molossus*) and Brazilian free-tailed bats (*Tadarida brasiliensis*) from urban areas of southern Brazil. *Virus Genes*. 2013 Mar 16. Epub ahead of print. <http://dx.doi.org/10.1007/s11262-013-0899-x>
  - Anthony SJ, Ojeda-Flores R, Rico-Chavez O, Navarrete-Macias I, Zambana-Torrelío C, Rostal MK, et al. Coronaviruses in bats from Mexico. *J Gen Virol*. 2013;94:1028–38. <http://dx.doi.org/10.1099/vir.0.049759-0>
  - Gloza-Rausch F, Ipsen A, Seebens A, Gottsche M, Panning M, Felix Drexler J, et al. Detection and prevalence patterns of group 1 coronaviruses in bats, northern Germany. *Emerg Infect Dis*. 2008;14:626–31. <http://dx.doi.org/10.3201/eid1404.071439>
  - Annan A, Baldwin H, Corman V, Klöse S, Owusu M, Enkrumah E, et al. Human betacoronavirus 2C EMC/2012-related viruses in bats, Ghana and Europe. *Emerg Infect Dis*. 2013;19:456–9. <http://dx.doi.org/10.3201/eid1903.121503>

Address for correspondence: Samuel R. Dominguez, Department of Pediatrics, University of Colorado School of Medicine, Children’s Hospital Colorado, 13123 E 16th Ave, Aurora, CO 80045, USA; email: samuel.dominguez@ucdenver.edu

## **Vibrio cholerae O1 El Tor and O139 Bengal Strains Carrying *ctxB<sup>ET</sup>*, Bangladesh**

**To the Editor:** Cholera, caused by *Vibrio cholerae*, continues to affect millions of persons in disease-endemic areas where safe drinking water is scarce and sanitation is poor. Of 7 cholera pandemics recorded since 1817, *V. cholerae* serogroup O1 classical (CL) biotype was associated with the sixth, whereas the seventh (ongoing) pandemic was initiated by *V. cholerae* O1 biotype El Tor (ET), which displaced CL in the early 1960s (1). During 1992–1993, a *V. cholerae* non-O1 serogroup, designated *V. cholerae* O139 synonym Bengal, initiated cholera epidemics in India and Bangladesh by transiently displacing *V. cholerae* O1 ET biotype (2). *V. cholerae* O139 was less frequently associated with cholera in Bangladesh than *V. cholerae* ET in 1994 and the years following, until 2005 (3); it has been undetected since then. Meanwhile, *V. cholerae* ET has shown genetic changes since 2001, and isolates carry the *ctxB* gene of the CL biotype (*ctxB<sup>CL</sup>*) in Bangladesh (4). Although the genetic transition from *ctxB<sup>ET</sup>* to *ctxB<sup>CL</sup>* was observed during 1998–1999 for *V. cholerae* O139 (5), *V. cholerae* strains carrying *ctxB<sup>ET</sup>* were considered extinct, i.e., undetected for about a decade.

During June 2010–December 2012, the International Centre for Diarrheal Disease Research, Bangladesh (ICDDR,B) systematically conducted ongoing epidemiologic ecologic surveillance in Dhaka, Chhatak, and Mathbaria and isolated *V. cholerae* strains (n = 500 [clinical/environmental]: Dhaka [n = 110/94], Mathbaria [n = 90/79], Chhatak [n = 111/16]). Of the 500 *V. cholerae* isolates, 496 were confirmed as O1 and 4 as O139 Bengal, on the basis of serologic, phenotypic, and genetic properties (3,6–8).

<sup>1</sup>These authors contributed equally to this article.

# Novel Bat Coronaviruses, Brazil and Mexico

## Technical Appendix

Technical Appendix Table. Results of reverse transcription PCR analysis of coronaviruses in bats from Brazil and Mexico\*

Country, bat species	Diet type	Male, no. (%)	Adult, no. (%)	No. positive/no. sampled (% positive)
<b>Brazil</b>				
<i>Artibeus lituratus</i>	Frugivorous	10 (63)	15 (94)	0/16
<i>Carollia perspicillata</i>	Frugivorous	6 (35)	17 (100)	0/17
<i>Desmodus rotundus</i>	Hematophagous	9 (45)	1 (5)	0/20
<i>Eumops glaucinus</i>	Insectivorous	2 (18)	9 (82)	0/11
<i>Eumops perotis</i>	Insectivorous	0 (0)	1 (100)	0/1
<i>Glossophaga soricina</i>	Nectivorous	4 (100)	4 (100)	0/4
<b><i>Molossus molossus</i></b>	<b>Insectivorous</b>	<b>5 (63)</b>	<b>8 (100)</b>	<b>1/8 (13)</b>
<b><i>Molossus rufus</i></b>	<b>Insectivorous</b>	<b>11 (65)</b>	<b>16 (94)</b>	<b>1/17 (6)</b>
<i>Myotis nigricans</i>	Insectivorous	1 (100)	1 (100)	0/1
<i>Noctilio albiventris</i>	Insectivorous	2 (100)	2 (100)	0/2
<b>Mexico</b>				
<i>Artibeus jamaicensis</i>	Frugivorous	1 (50)	Unknown	0/2
<i>Artibeus phaeotis</i>	Frugivorous	1 (50)	Unknown	0/2
<i>Balantiopteryx plicata</i>	Insectivorous	4 (50)	Unknown	0/8
<i>Desmodus rotundus</i>	Hematophagous	21 (81)	Unknown	0/26
<i>Glossophaga soricina</i>	Nectivorous	6 (67)	Unknown	0/9
<i>Lasiurus cinereus</i>	Insectivorous	6 (100)	Unknown	0/6
<i>Mormoops megalophylla</i>	Insectivorous	4 (67)	Unknown	0/6
<b><i>Pteronotus davyi</i></b>	<b>Insectivorous</b>	<b>2 (50)</b>	<b>Unknown</b>	<b>1/4 (25)</b>
<i>Pteronotus parnellii</i>	Insectivorous	3 (50)	Unknown	0/6
<i>Pteronotus personatus</i>	Insectivorous	4 (100)	Unknown	0/4
<i>Sturnira lilium</i>	Frugivorous	0 (0)	Unknown	0/1
<i>Sturnira ludovici</i>	Frugivorous	0 (0)	Unknown	0/1
<b>Total</b>		<b>102 (59)</b>	<b>75 (76)</b>	<b>3/172 (2)</b>

\***Boldface** indicates the novel alphacoronavirus detected in bat specimens from São Paulo state in southeastern Brazil and the novel betacoronavirus detected in a specimen from a bat from Jalisco state in midwestern Mexico.