
Landscape Epidemiology of Tularemia Outbreaks in Sweden

Kerstin Svensson, Erik Bäck, Henrik Eliasson, Lennart Berglund, Malin Granberg, Linda Karlsson, Pär Larsson, Mats Forsman, and Anders Johansson

Summer outbreaks of tularemia that occurred from 1995 through 2005 in 2 locations in Sweden affected 441 persons. We performed an epidemiologic investigation of these outbreaks using a novel strategy, involving high-resolution genotyping of *Francisella tularensis* isolates obtained from 136 patients (using 18 genetic markers developed from 6 *F. tularensis* genome sequences) and interviews with the patients. Strong spatial associations were found between *F. tularensis* subpopulations and the places of disease transmission; infection by some subpopulations occurred within areas as small as 2 km², indicating unidentified environmental point sources of tularemia. In both locations, disease clusters were associated with recreational areas beside water, and genetic subpopulations were present throughout the tularemia season and persisted over years. High-resolution genotyping in combination with patients' statements about geographic places of disease transmission provided valuable indications of likely sources of infection and the causal genotypes during these tularemia outbreaks.

Traditional objectives of investigations of infectious disease outbreaks are to identify ways to control ongoing outbreaks and to prevent future outbreaks. However, a paucity of epidemiologic and ecologic knowledge hampers the investigation of tularemia outbreaks caused by the intracellular bacterium *Francisella tularensis*, although it is one of the most virulent pathogens known. The Centers for Disease Control and Prevention lists this pathogen as

one of the most potentially dangerous bioterrorism bacteria (1). Little is known about natural reservoirs of tularemia, *F. tularensis* transmission mechanisms to humans, and factors influencing the often irregular pattern of outbreaks. Because tularemia is a zoonosis and little ecologic information exists about the causal organism, its prevention and control may require the development of novel outbreak investigation strategies.

In nature, *F. tularensis* is associated with an extremely wide range of hosts and arthropod vectors; a recent review listed 304 susceptible species (2). Transmission to humans may occur through a number of routes; skin inoculation by blood-feeding arthropod vectors is one of the most common routes (3). The infectious dose can be as low as 10 bacterial cells (4). Human tularemia naturally occurs only in biotopes in the Northern Hemisphere. We describe an investigation of a large number of *F. tularensis* isolates from humans. Patients were infected mainly from mosquito bites and had an influenza-like illness, a primary skin ulcer, and enlargement of lymph nodes, the ulceroglandular form of tularemia (5,6). Tularemia is endemic in Sweden, with seasonal outbreaks and a patchy geographic distribution. The number of infected humans ranged from 27 to 698 per year from 1998 through 2007 in a population of ≈9.1 million (annual incidence rate 0.30–7.78/100,000 persons) (7). For comparison, 20–64 humans were reported with tularemia from 2000 through 2006 in the tularemia-endemic US states of Arkansas and Missouri, from a population of ≈8.3 million (annual incidence rate 0.23–0.76/100,000 persons) (8). *F. tularensis* subsp. *holarctica* causes tularemia all over the Northern Hemisphere. This is a severe febrile disease but does not generally result in death. A more virulent variety, *F. tularensis* subsp. *tularensis*, exists in North America. It was associated with a human mortality rate of 5%–15% before the advent of effective antimicrobial drug

Author affiliations: Swedish Defense Research Agency, Umeå, Sweden (K. Svensson, M. Granberg, L. Karlsson, P. Larsson, M. Forsman, A. Johansson); Umeå University, Umeå (K. Svensson, A. Johansson); Örebro University Hospital, Örebro, Sweden (E. Bäck, H. Eliasson); Ljusdal Healthcare Centre, Ljusdal, Sweden (L. Berglund); and Umeå University Hospital, Umeå (A. Johansson)

DOI: 10.3201/eid1512.090487

treatments (4). *F. tularensis* has a clonal genetic structure, a property that should facilitate tracking the spread of tularemia by genotyping (9,10).

We demonstrate a strategy to enhance epidemiologic investigations of tularemia by combining geographic data collected from patient interviews and high-resolution genotyping of *F. tularensis* subsp. *holarctica* isolates recovered from tularemia patients. We found that geographic distributions of specific *F. tularensis* subsp. *holarctica* subpopulations were highly localized during outbreaks (infections by some genotypes were restricted to areas as small as 2 km²), indicating distinct point sources of infection.

Materials and Methods

Study Locations

We studied tularemia, which must be reported under Swedish law, in 2 locations 364 km apart: the Municipality of Ljusdal and the County of Örebro (19,384 and 273,956 inhabitants, respectively, in 2005) (11) (Figure 1). The human tularemia incidence rates in Ljusdal and Örebro cited here were based on the annual number of human tularemia cases reported to the County Medical Officer for Communicable Diseases. Tularemia has been endemic for several decades in Ljusdal with repeated outbreaks (12), whereas in Örebro, incidence of tularemia has been low since the disease was first reported in Sweden in the 1930s (5). From 1990 through 1999, Örebro reported only 8 cases.

Study Period, Isolate Information, and Preparation of DNA

From 1995 through 2005, clinicians in Ljusdal and Örebro sent patient specimens for tularemia serologic analysis, *F. tularensis* culture, and PCR detection to the laboratories at the Swedish Defense Research Agency, Umeå, Sweden; Umeå University Hospital, Umeå; or Örebro University Hospital, Örebro. Culture and PCR diagnostics of ulcer specimens were performed as described elsewhere (13). Blood culture was performed by using the instrumented BD Bactec Plus system (Becton Dickinson, Franklin Lakes, NJ, USA). All *Francisella* culture work was performed under BioSafety level 3 laboratory conditions. A tube agglutination test or an ELISA measuring immunoglobulin (Ig) M and IgG was used for serologic analysis, as previously described (14). For DNA preparation, *F. tularensis* isolates were recultured, then a loopful of bacteria was suspended in phosphate-buffered saline and heat-killed, and a chaotropic salt method was applied (6).

Identification and Selection of Markers

We used 3 types of genetic markers to provide high-typing resolution and robust categorization of *F. tularensis* subsp. *holarctica* into genetic subpopulations. As described



Figure 1. Locations of the 2 tularemia outbreak areas in Sweden, showing Ljusdal and Örebro 364 km apart.

elsewhere, we previously identified 280 insertion/deletion (INDEL) and variable number of tandem repeat (VNTR) markers by multiple alignments of the *Francisella* genomes U112, FSC147, SCHU S4, OSU18, and LVS (15). For the current study, we selected 20 of these 280 markers (17 INDELS and 3 VNTRs) that were polymorphic among *F. tularensis* subsp. *holarctica* isolates from Europe and North America. We then added 11 VNTR markers showing polymorphism among subsp. *holarctica* isolates of worldwide origin, and 1 INDEL (Ft-M19) shown to be specific to subsp. *holarctica* (9). Finally, we added 2 single nucleotide polymorphism (SNP) markers identified in a comparative BLAST analysis (<http://blast.ncbi.nlm.nih.gov/Blast.cgi>) of *F. tularensis* subsp. *holarctica* genomes of a worldwide origin including FSC200 (human, Ljusdal, 1998), LVS, RC530, FSC022, FTA, OR96-0246, and OSU18. The 2 SNP markers were selected to be phylogenetically informative while lacking homoplasy among 67 *Francisella* strains of diverse origin. Collectively, the selection process yielded a set of 34 genetic markers that were applied to 48 of the 136 study isolates (24 each from Örebro and Ljusdal). Markers found to be polymorphic among the 48 selected isolates were finally used to genotype all 136 isolates.

DNA Fragment Analysis and Real-time PCR SNP Assay

DNA fragment analysis of INDELs and VNTRs were performed on a Genetic Analysis System CEQ 8800 (Beckman Coulter Inc., Fullerton, CA, USA) machine, as previously described (15). Genomic positions for SNPs and their corresponding PCR amplification primers are presented in Table 1. The SNP states were determined by real-time PCR by using a set of 2 forward primers with different single nucleotide extensions at the 3' end, and a common reverse primer (16). We could read the SNP state by a differential PCR amplification efficiency.

Genetic Groups, Subgroups, and Cluster Analysis

We assigned isolates to genotypes by using the binary character output for each INDEL marker, the repeat copy number at each VNTR marker, and the results of the SNP assay. We analyzed the associations among genotypes by their degree of genetic character sharing by using the eBURST algorithm (17). Genetic groups were defined as genotypes sharing 16 of 18 characters and subgroups sharing 17 of 18 characters. In addition, the genetic associations between the isolates were assessed by cluster analysis by using the unweighted pair group m with arithmetic mean (18) algorithm implemented in BioNumerics version 5.1 (Applied Maths NV, Sint-Martens-Latem, Belgium) using the categorical coefficient.

Patient Interviews and Geographic Mapping

To obtain geographic data on likely places of disease transmission in Ljusdal, all patients in whom *F. tularensis* subsp. *holarctica* was diagnosed from 1995 through 2005 completed a questionnaire distributed during 2007 and marked on an accompanying map the location of the site where they believed they had been infected. In Örebro, patients admitted to hospital with tularemia from 2000 through 2004 were interviewed on admission, interviewed by telephone, or issued questionnaires, as previously described (5). All patients were asked for alternative places

of disease transmission and to self-estimate the spatial data quality on a 3-category scale. A pair of RT-90 cartographic coordinates (19) was then assigned to each patient and the corresponding *F. tularensis* subsp. *holarctica* isolate, specifying the locations of first-choice place of transmission with the highest self-estimated quality. RT 90 is a standardized 2-dimensional Swedish map reference coordinate system. For patients who indicated multiple places of infection with identical data quality estimates, the coordinates of the place closest to the spatial mean center of tularemia in Ljusdal or Örebro were used (online Appendix Table 1, available from www.cdc.gov/EID/content/15/12/1937-appT1.htm, and online Appendix Table 2, available from www.cdc.gov/EID/content/15/12/1937-appT2.htm). If no geographic information was available for a patient, the residential address was used.

We visualized and analyzed geographic and genotype data by using ArcView software in ArcGIS version 9.3 (ESRI, Redlands, CA, USA), and calculated spatial mean centers of disease occurrence (the average x and y values for the input coordinates) for all genetic groups and subgroups of isolates. The directional trend was examined by using the directional distribution tool in ArcGIS Spatial Statistics Tools (ESRI) and an ellipse size of 1 standard deviation.

Results

Descriptive Epidemiology

We isolated *F. tularensis* from 136 of 441 patients with laboratory-verified tularemia in the Municipality of Ljusdal during 1995–2005 (n = 56) and in the County of Örebro during 2000–2004 (n = 80). This finding constituted 34% (56/163) and 29% (80/278) of all patients with laboratory-verified tularemia during the outbreak years in Ljusdal (1995, 1998, 2002, 2005) and Örebro (2000, 2002–2004), respectively (Figure 1).

Analysis per outbreak year showed that the number of patients with culture-verified tularemia were proportional

Table 1. Attributes of 7 novel typing markers for *Francisella tularensis* subsp. *holarctica**

Marker category	Marker name	Genomic position†	Size, bp	Forward primer sequence (5' → 3')	Reverse primer sequence (5' → 3')
INDEL	Ftind39	798173-4	11	ATAATTACTATCAAATGCCCAAC	CAAGATTTACCTCAAGAAATGGAT
	Ftind40	1502502-821	73	ATATGATTGCTCCAGTATTATTTC	TTGTAAGGTGATCGGAGTATTT
	Ftind41	1494030-328	20	CCAAGAGCAGAGCATAATTCTAA	GCCTGACRCAATGACATATTTAC
	Ftind42	1849905-1850278	187	AGTAATAACGGTACGATCACAAAG	GGCTTTAGCTTACCAACASAAAC
VNTR	Ft-M26	1833026-37	6‡	AATACTCGCTTCTATCTTTCTGGT	AATCTTTTGGAGAGGTTTTATTCA
SNP	Ft-SNP1	927939	1	ATCCCTGTTGGGATATCCTCGACTAA	ACCAAGGTAGATTTGCAGCTACA§ ACCAAGGTAGATTTGCAGCTACG§
	Ft-SNP2	1044580	1	ATCAGACTTAGGTGTTAGATCAGAGTT	TGAATACTCTACGCGATAAGATA§ TGAATACTCTACGCGATAAGATG§

*INDEL, insertion/deletion; VNTR, variable number tandem repeat; SNP, single nucleotide polymorphism.

†GenBank accession no. AM233362.1 (complete genome of *F. tularensis* subsp. *holarctica* LVS).

‡There were two 6-bp repeats in the genome sequence of LVS.

§The 2 SNP states are in **boldface**, an adenosine nucleotide represent a derived state for both markers.

to the total number of tularemia patients. The ages of patients from whom positive cultures were obtained ranged from 1 to 90 years, distributed evenly among age groups: 20%, 18%, 34%, and 28% in persons 0–20, 21–40, 41–60, and >60 years of age, respectively, with a male:female ratio of 1.2:1 (online Appendix Tables 1, 2). No apparent correlations were found between genotypes and either the gender or age of the patients. The annual incidence rates of tularemia were 21–423 per 100,000 persons in the Municipality of Ljusdal and 12–55 per 100,000 persons in the County of Örebro in outbreak years, but disease-free years were interspersed between outbreaks. Generally, tularemia patients reported that they were infected at places used for outdoor activities, e.g., on walking paths, at bathing places, at golf courses, or in an allotment garden (parcels of land for cultivation) assigned to individuals or families (Figures 2–4; online Technical Appendix, available from www.cdc.gov/EID/content/15/12/1937-Techapp.pdf). A statement of a likely arthropod transmission vector was available for patients from Örebro; indicating mosquitoes ($n = 101$), ticks (4), horse flies (8), mosquitoes or ticks (2), mosquitoes or horse flies (19); 144 patients reported not knowing (the vectors reported by the 80 patients with culture-verified tularemia are listed in online Appendix Table 2). A presumed place of tularemia acquisition was pinpointed by 120 (88%) of 136 of patients and self-estimates of the quality of spatial data were available for 44 of 56 patients in Ljusdal and 76 of 80 patients in Örebro (online Appendix Tables 1, 2) with culture-verified tularemia. Overall, patients felt confident about where they had acquired tularemia; 92 of 136 patients indicated that their place of disease acquisition was certain or probable (Table 2).

Genetic Analysis of Outbreak Isolates

We first identified 34 genetic markers that were polymorphic among *F. tularensis* subsp. *holarctica* isolates of worldwide origin. Among these, 18 markers (6/14 VNTRs, 10/18 INDELs, and both SNPs) were polymorphic among the 136 study isolates. Seven of these polymorphic markers have not been previously described (Table 1); 11 (Ftind30–34, Ftind37, Ft-M3, Ft-M6, Ft-M20, Ft-M22, Ft-M24) have been previously published (9,15). By applying the 18-marker system to the 136 isolates, we identified 19 genotypes. The 136 isolates were assigned to 3 genetic groups (denoted 1, 2, and 3) corresponding to previously described genetic groups (9,15,20) and 5 subgroups (denoted 1a–e), on the basis of their degree of character sharing (Figure 5). Most isolates from Ljusdal (55/56) and Örebro (68/80) belonged to genetic group 1. In pairwise comparisons, genetic groups 1, 2, and 3 differed at 6–13 of the 18 characters. A mutation at marker Ft-SNP2 was distinctive to the large genetic subgroup 1e from Ljusdal (53 isolates). Cluster analysis based on a distance matrix showed an identical grouping

of isolates (Figure 5). Only 1 genotype was represented in both study locations; an isolate from Ljusdal obtained in 2005 was identical to an isolate from Örebro in 2003 (see genotype ID 9; Figure 5). In both study locations, genetic subgroups and genotypes were present throughout a tularemia season and persisted over years (Figures 5, 6).

Phylogeographic Analysis in Ljusdal

The *F. tularensis* isolates recovered from 1995 through 2005 from patients in Ljusdal were genetically monomorphic. The 53 of 56 isolates that belonged to genetic sub-

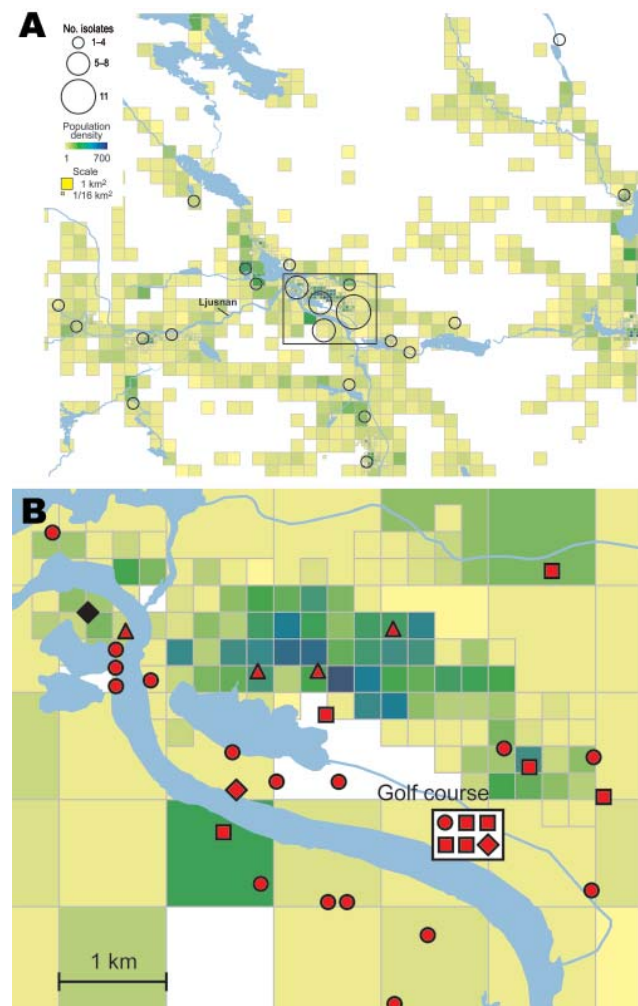


Figure 2. A) Spatial distribution of 56 places of tularemia transmission in Ljusdal, Sweden, 1995–2005, overlaid on a map with color-coded demographic data based on residential addresses. B) Disease cluster in an area of 25 km² along the Ljusnan River in Ljusdal. Reported places of disease transmission and corresponding bacterial genotypes are shown. The 33 *Francisella tularensis* isolates belong to genetic group 1e and are of genotype ID 15 (red) or genotype ID 16 (black). Place of disease transmission was reported to be certain (circle), probable (square), or possible (diamond); patient residency was used when transmission data was unavailable (triangle).

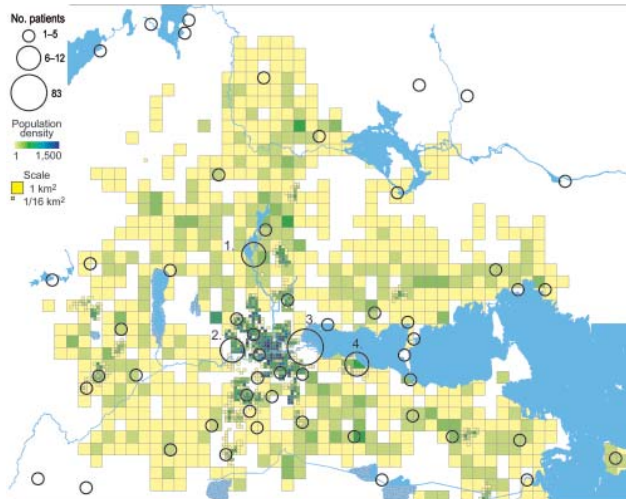


Figure 3. Geographic distribution of 202/240 places of tularemia transmission in Örebro, Sweden, 2000–2004. Four recreational areas were disease cluster sites for tularemia transmission: 1) Lake Längen, 2) Karslundsskogen/Hästhagen, 3) Oset/Rynningevikens nature reserve, and 4) Ekeby-Almby.

group 1e were circumscribed by a 150-km² ellipse (Figure 7, panel A). All 56 isolates were circumscribed by a 230-km² ellipse. Analysis per outbreak year showed that the infection area of 1e isolates was stable, with an east–west distribution along the river Ljusnan (Figure 7). The places of disease transmission for 3 isolates of genetic subgroups 1b, 1c, and 3 were peripheral to the infection area of 1e isolates (Figure 7, panel D). Many patients reported acquiring tularemia from restricted geographic areas, e.g., 33 of 56 isolates were from a 25-km² stretch along the river Ljusnan, with a disease cluster at a golf course (Figure 2).

Phylogeographic Analysis in Örebro

In Örebro, the places of disease transmission for genetic groups 1 and 2 were within 2 partially overlapping geographic areas with distinctly separate mean centers of occurrence (Figure 8, panel A). Closer examination of the areas of genetic group 1 showed that those of subgroups 1a, 1b, and 1d had similar spatial centers but different directional distributions (Figure 8, panels B–D). Infection locations of genetic subgroups 1a and 1b were oriented in an east-west direction along the Svartån River, whereas those of subgroup 1d were oriented in a north-south direction along the Lillån River. The places of disease transmission of genetic group 1 were circumscribed by a concatenated 272-km² ellipse area (Figure 8, panel A); those of genetic group 2 were circumscribed by a 645-km² ellipse (Figure 8, panel E). The proportions of isolates transmitted within the elliptic infection areas of genetic subgroups 1a, 1b, 1d, and 2 were 7 of 12, 9 of 16, 30 of 37, and 7 of 12, respec-

tively (Figure 8, panels B–E). The geographic distribution of genetic subgroup 1a’s places of transmission was most restricted, spanning an elliptic area of only 16 km². Seven of 12 transmission locations of genetic subgroup 1a could alternatively be enclosed in a rectangular area of just 2 km² (Figure 8, panel B). The genetic subgroup 1c comprised only 3 isolates with 3 distinct genotypes; places of disease transmission spanned a distance of 58 km (not shown).

In total, 240 of 278 patients in Örebro reported places of tularemia transmission. A spatial distribution plot of the locations reported by 202 of these patients is shown in Figure 3 (those of 38 patients are not shown because they were outside the map area), indicating the existence of 4 tularemia transmission clusters. Two clusters are further detailed in Figure 4. Eighty-three patients reportedly acquired tularemia in the Oset/Rynningeviken nature reserve 2 km from Örebro City center. Twenty-six of 27 cultured *F. tularensis* isolates from this area belonged to genetic group 1. Seventeen patients reported transmission at Lake Längen, 5 km north of Örebro City. Here, multiple patient reports verified that bacteria of genetic groups 1d and 2 coexisted. However, the centers of occurrence were geographically distinct (Figure 8, panel A).

Discussion

In this study of natural outbreaks of human tularemia in 2 locations in Sweden, genetic techniques developed for high-resolution typing of *F. tularensis* were used in con-

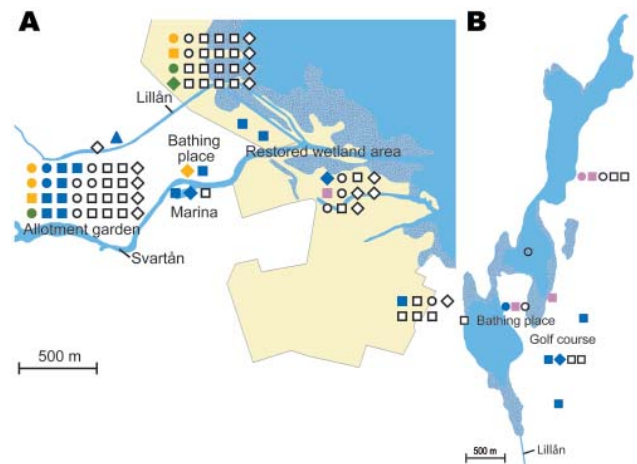


Figure 4. A) Cluster site for tularemia transmission at Oset/Rynningeviken nature reserve in Örebro, Sweden, with 83 patient reports. Twenty-seven *Francisella tularensis* isolates were recovered from these patients. B) Cluster site for tularemia transmission at Lake Längen, Örebro, Sweden, with 17 patient reports. Nine *F. tularensis* isolates were recovered from these patients. Place of disease transmission were reported to be certain (circle), probable (square), or possible (diamond); patient residency (triangle) was used if no such data were available. Genetic groups are indicated by color: yellow (1a), green (1b), blue (1d), or purple (2); white indicates no *F. tularensis* culture.

Table 2. Patient self-estimates of data quality for places of tularemia transmission, Sweden*

Location	Certain	Probable	Possible	Residential address	Total
Örebro	15	38	23	4	80
Ljusdal	23	16	5	12	56
Total	38	54	28	16	136

*Values summarize the information in the column "Patient self-estimate" found in online Appendix Tables 1 and 2 (available from www.cdc.gov/EID/content/15/12/1937-appT1.htm and www.cdc.gov/EID/content/15/12/1937-appT2.htm).

junction with information obtained from patient surveys and interviews to investigate the epidemiology and geographic spread of disease. Places of transmission of specific *F. tularensis* genotypes (Figure 5) were highly localized and restricted to areas as low as 2 km², pinpointing likely point sources of infection (Figures 7, 8). The results demonstrate the capability of enhancing epidemiologic investigations of tularemia by combining data from patient interviews with high-resolution genotyping of *F. tularensis* isolates recovered from the same patients.

A recent study in Utah of 5 patients and 11 rabbit carcasses infected with *F. tularensis* indicated that multiple *F. tularensis* subspecies and genetic subgroups may cause tularemia in a localized outbreak (21). Other studies have demonstrated that genetic subgroups of *F. tularensis* have distinct frequencies at continental scales throughout the Northern Hemisphere (20,22–24). Our study, in which 136 *F. tularensis* subsp. *holarctica* isolates from 2 localized human outbreaks were examined, shows the phylogeographic structure in *F. tularensis* subsp. *holarctica* populations involved in local outbreaks.

Why is there a phylogeographic structure? We found high genetic diversity and limited spatial distribution of ge-

netic group 1 isolates in Örebro, which suggested recent expansion of local *F. tularensis* subsp. *holarctica* populations. The number of genotypes in genetic group 1 was notably greater than among genetic group 2 isolates from Örebro or among all the isolates recovered in the long-term tularemia-endemic area of Ljusdal (Figure 5). Because previous genotyping data have demonstrated that homoplastic SNP mutations are virtually nonexistent in *F. tularensis* (20,25), a common mutation at Ft-SNP1 (Figure 5) indicates that the isolates in genetic subgroup 1d in Örebro and 1e in Ljusdal share a more recent common ancestor than they do with isolates of subgroups 1a, 1b, or 1c in Örebro. However, genetic distances among all the group 1 isolates are likely to be small because Ft-SNP1 could be identified only by comparison of complete genome sequences, including a genetic subgroup 1e genome (strain FSC200 from Ljusdal) (26,27). Altogether, the data imply that genetic groups 1a, 1b, and 1c isolates have a local evolutionary history rather than a recent local disease introduction (as verified by high genetic variation at VNTR markers) and that the 1d isolates appear genetically related with isolates from Ljusdal (as verified by a SNP mutation).

Restoration of a wetland area between 1993 and 2006 (Figure 4) in Örebro may have been a factor in expansion of these genetic subgroups. Because *F. tularensis* subsp. *holarctica* is known to be associated with natural waters, favorable conditions for its replication may have resulted. The large genetic distance between genetic groups 1 and 2 in Örebro (they are consistently distinct at 9 of 18 markers; Figure 5), where tularemia recently has reemerged, compares with distances previously found among *F. tularensis* subsp. *holarctica* isolates of worldwide origin (9) and excludes a recent local common origin. The existence of

Clustering tree	Genetic group	Location	No. isolates	Years	INDEL (FtInd)										SNP (Ft-SNP)		VNTR (Ft-M)					Genotype ID		
					37	40	41	42	30	31	32	33	34	39	1	2	22	24	26	20	6		3	
	1a	Örebro	7	2003–2004	1	1	1	1	0	0	0	0	0	0	0	G	G	4	2	2	4	4	16	1
			5	2003	1	1	1	1	0	0	0	0	0	0	G	G	4	2	2	4	4	19	2	
	1b	Örebro	1	2004	1	1	1	1	0	0	0	0	0	0	G	G	4	2	2	3	4	13	3	
			1	2000	1	1	1	1	0	0	0	0	0	0	G	G	4	2	2	3	4	14	4	
	1b	Örebro	11	2003–2004	1	1	1	1	0	0	0	0	0	0	G	G	4	2	2	3	4	18	5	
			2	2003–2004	1	1	1	1	0	0	0	0	0	0	G	G	4	2	2	3	4	22	6	
	1c	Ljusdal	1	2003	1	1	1	1	0	0	0	0	0	0	G	G	4	2	2	3	4	28	7	
			1	2005	1	1	1	1	0	0	0	0	0	0	G	G	4	2	2	3	4	17	8	
	1c	Lj./Ör.	1	2005/2003	1	1	1	1	0	0	0	0	0	0	G	G	4	2	2	3	6	9	9	
			1	2003	1	1	1	1	0	0	0	0	0	0	G	G	4	2	2	3	6	10	10	
	1d	Örebro	1	2003	1	1	1	1	0	0	0	0	0	0	G	G	4	2	2	3	7	10	11	
			10	2002, 2003, 2004	1	1	1	1	0	0	0	0	0	0	A	G	4	2	2	3	5	20	12	
	1d	Örebro	26	2002, 2003, 2004	1	1	1	1	0	0	0	0	0	0	A	G	4	2	2	3	5	21	13	
			1	2003	1	1	1	1	0	0	0	0	0	0	A	G	4	2	2	3	5	22	14	
	1e	Ljusdal	49	1995, 1998, 2002, 2005	1	1	1	1	0	0	0	0	0	0	A	A	4	2	2	3	5	10	15	
			4	1998, 2005	1	1	1	1	0	0	0	0	0	0	A	A	4	2	2	3	5	11	16	
	2	Örebro	11	2000, 2002, 2003, 2004	1	1	1	1	1	1	1	1	1	1	G	G	3	1	3	3	4	12	17	
			1	2003	1	1	1	1	1	1	1	1	1	1	G	G	3	1	3	3	4	14	18	
	3	Ljusdal	1	2005	0	0	0	0	1	1	1	1	1	1	G	G	3	2	3	3	4	15	19	

Figure 5. Attributes of 19 genotypes of *Francisella tularensis* subsp. *holarctica* identified in this study, and their genetic associations as assessed by a phylogenetic method (the clustering tree) or by an allele-based method (the genetic group designations). The letter and number designations in the clustering tree refer to nomenclatures of *F. tularensis* genetic clades as described by Johansson et al. (9). Gray shading indicates the derived genetic marker states. INDEL, insertion/deletion; SNP, single nucleotide polymorphism; VNTR, variable number of tandem repeats; ID, identification.

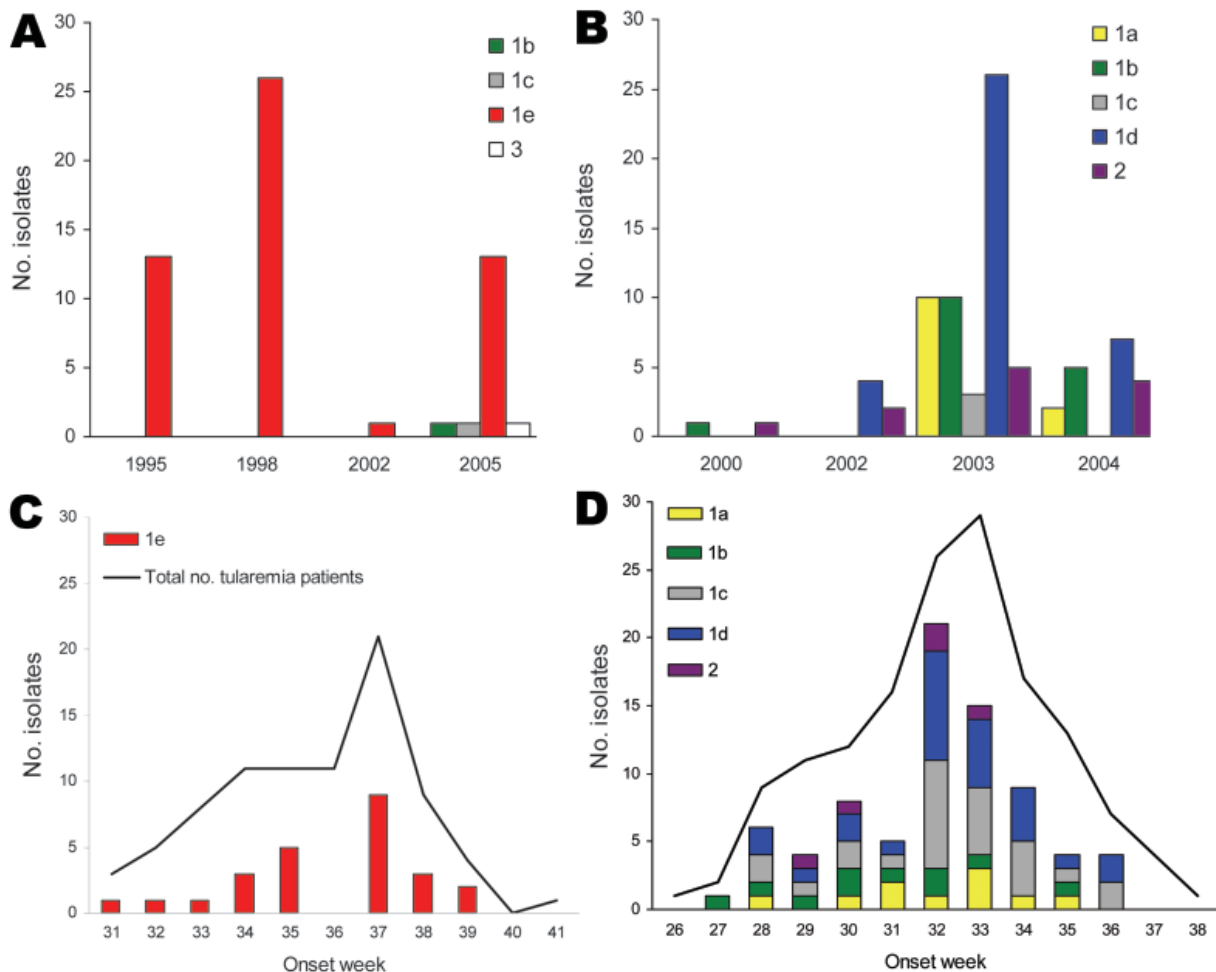


Figure 6. Proportional representation of genetic groups among isolated recovered per year for Ljusdal (A) and Örebro (B) and seasonal distribution of genetic groups of *Francisella tularensis* subsp. *holarctica* in 1998 in Ljusdal (C) and in 2003 in Örebro (D), Sweden. The week of disease onset was available for 84/87 patients in Ljusdal and 148/152 patients in Örebro.

several distinct *F. tularensis* populations active within a single tularemia outbreak is further demonstrated by comparing data of this study with data from previous work by Johansson et al. (9) and Kugeler et al. (24). All of the group 1 isolates belong to clades named B1/B3 or B.Br.013/014, respectively in these previous publications; group 2 isolates belong to clade B4 or B.Br.007/008 (or a nearby clade), and group 3 isolates to clade B2 or B.Br.OSU18. Kugeler et al. demonstrated the large numbers of SNPs separating group 1 from groups 2 and 3 isolates, thus verifying very distinct genetic populations.

The geographically widely distributed genetic group 2 in Örebro, the subgroup 1d in Örebro, or the subgroup 1e in Ljusdal, may be results of past temporary reductions of population sizes (genetic bottlenecks) or selective events (selective sweeps) that have eliminated genetic variation in originally more diverse populations. The selective sweep hypothesis is particularly attractive; a highly fit genotype

over time will increase its frequency relative to other genotypes and may occupy larger geographic areas. This scenario would explain previous findings of low genetic diversity among isolates recovered from areas of Sweden with a long history of tularemia infections (9).

The genetic differences of genetic groups and subgroups were mirrored spatially. The genetic groups 1 and 2 in Örebro showed distinct mean centers of occurrence (Figure 8, panel A), and genetic group 1d isolates were the only isolates of group 1 found along the whole stretch of the river Lillån, resulting in a distribution area oriented north-south, opposite to subgroups 1a and 1b, which showed an east-west direction of their distribution areas (Figure 8, panels B–D). Similar pattern of separated disease occurrence center for genetic groups were found in Ljusdal (Figure 7, panel D). Collectively, these observations indicate distinct replication foci and dispersal areas of different *F. tularensis* subsp. *holarctica* populations.

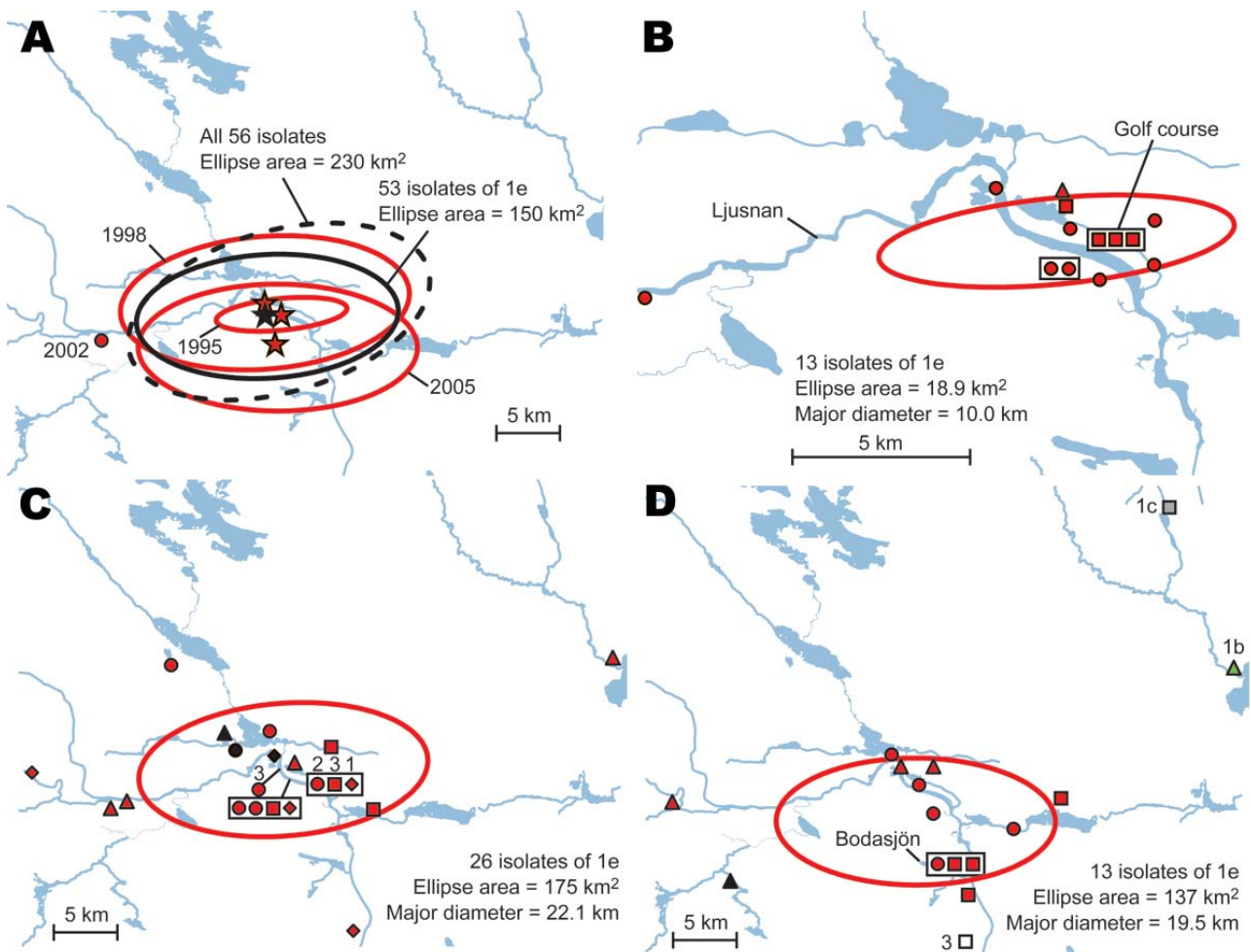


Figure 7. A) Directional distributions of tularemia transmission sites in Ljusdal, Sweden, by outbreak year (red ellipses). The *Francisella tularensis* isolates recovered from patients in Ljusdal were genetically monomorphic, with 53/56 isolates belonging to genetic subgroup 1e (solid black ellipse). The dashed black ellipse represents the distributions of all 56 isolates. Each ellipse represents a 1 standard deviation distribution around the mean centers of occurrence (starred). B) Distributions of 13 isolates of genetic group 1e, genotype identification (ID) 15 (red), Ljusdal, 1995. C) Distributions of 26 isolates of genetic group 1e, genotype ID 15 (red) and genotype ID 16 (black), Ljusdal, 1998. Numbers above symbols indicate multiple data points. D) Distributions of 13 isolates of genetic group 1e, genotype ID 15 (red) and genotype ID 16 (black); genetic group 1b (green); genetic group 1c (gray); and genetic group 3 (white), Ljusdal, 2005. Spatial data quality assessment for each pair of coordinates is shown as certain (circle), probable (square), or possible (diamond); patient residency (triangle) was used when transmission data were unavailable.

Many reasons are likely for a clustering of human tularemia. First, tularemia occurrence depends on the number of persons at risk, i.e., those who visit or live in areas where *F. tularensis* foci exists (Figures 2, 3). Second is the effect of vector ecology. Most of the 134 (91%) patients in Örebro who specified a disease transmission vector reported it to be mosquitoes. Thus, the distance that mosquitoes disperse, 200–2,000 m for most species in Sweden (28,29), probably strongly influences the infection patterns. Third, local factors affect the persistence and distribution of *F. tularensis* in nature. We found identical genotypes over different years, indicating that tularemia overwinters at the disease cluster sites. Genetic groups also were present during the

whole tularemia season from July to September, indicating that no particular temporal patterns were associated with specific bacterial genotypes (Figures 5, 6).

Although uneven distributions of persons at risk and transmission vectors, as well as a general association of tularemia with streaming waters, may explain geographic disease clustering in humans, only different spatial distributions of *F. tularensis* populations can explain clustering of genetic groups and subgroups. Our observations are consistent with Pavlovsky's theory of "natural nidity of transmissible diseases," i.e., a connection of the vector-borne disease with a definite geographic landscape (30). In the case of tularemia, a recent study on dog ticks carry-

ing *F. tularensis* subsp. *tularensis* on Martha's Vineyard (Massachusetts, USA) showed persistence in a microfocus in nature over 4 years (31). Supporting the existence of a landscape epidemiology of tularemia, we found that different *F. tularensis* subsp. *holarctica* populations are locally present near certain bodies of water where they apparently stably perpetuate.

A major limitation of this study is a retrospective design that may have caused recall bias regarding the locations at which tularemia was contracted. The patient recall

time in Ljusdal sometimes was up to 12 years; in Örebro patients were approached at admission to hospital. It is our impression, however, from many patient interviews, that the short incubation time of tularemia (2–5 days), the distinct clinical expression, its occurrence in restricted geographic areas, and a transmission route by blood-feeding arthropods, did facilitate patient recalls.

Ljusdal and Örebro in Sweden have comparatively high tularemia incidence rates. The results of this study suggest that genotyping coupled with global imaging satel-

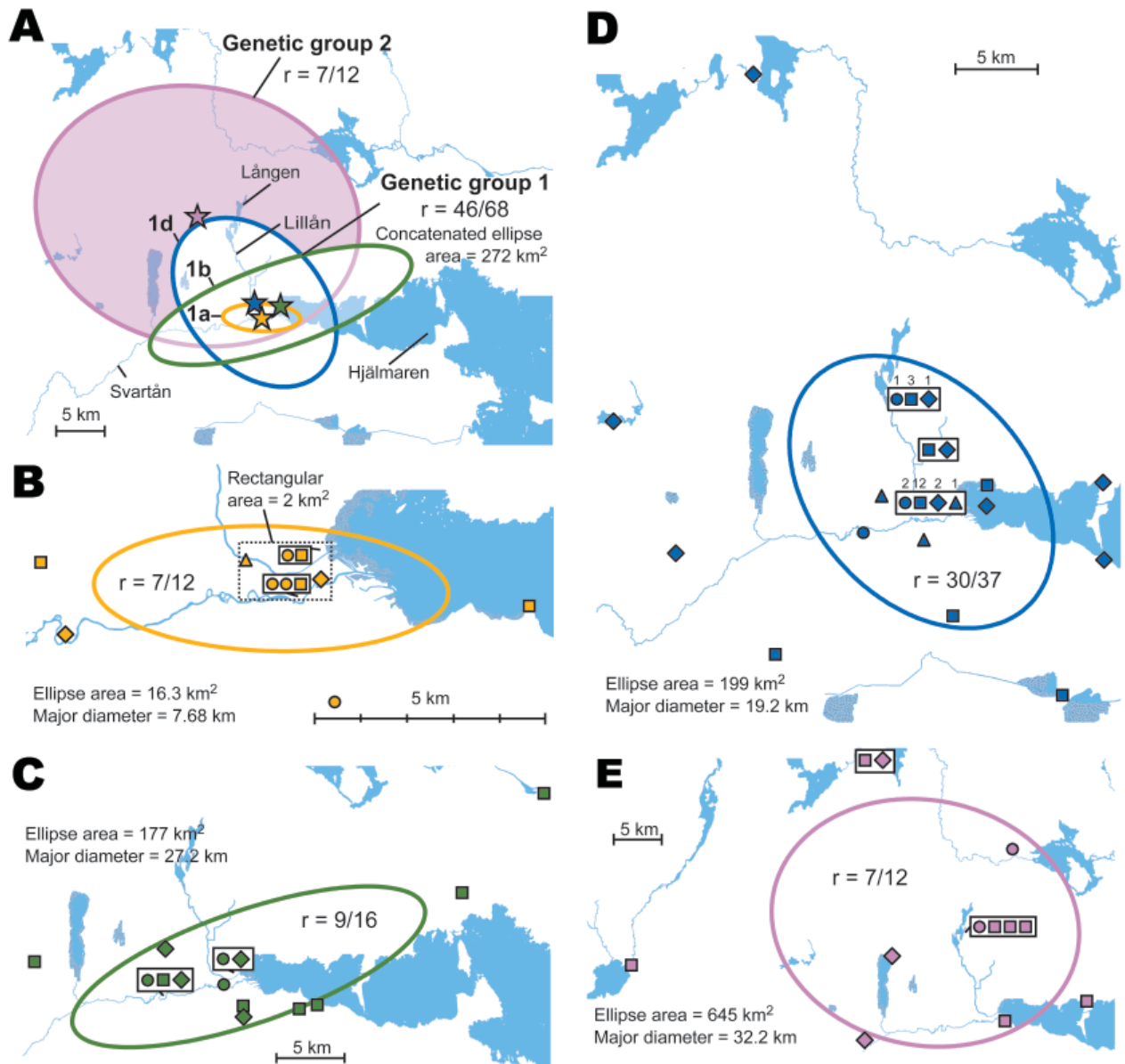


Figure 8. A) Directional distributions and spatial mean centers for 80 *Francisella tularensis* isolates of 4 different genetic groups, Örebro, Sweden. Each colored ellipse represents a 1 standard deviation distribution around the mean centers of occurrence (starred) for a genetic group. B–E) Details on transmission sites in Örebro for genetic groups of *F. tularensis* isolates: B) genetic group 1a; C) genetic group 1b; D) genetic group 1d; E) genetic group 2. Patient self-estimates of the spatial data quality are shown as certain (circle), probable (square), or possible (diamond); patient residency (triangle) was used if no such data were available. Proportions (r) of transmission sites within/outside an ellipse are indicated. Numbers above symbols in panel D indicate multiple data points at the same place.

lite mapping can help identify local environmental sources of tularemia, which is essential for effective infection control. This study also shows that pathogen genome sequencing efforts can contribute to the design of genotyping schemes tailored to a specific outbreak investigation. By combining high-resolution genotyping with patient interviews, we found *F. tularensis* populations to have strong spatial associations in 2 localized tularemia outbreaks. In future investigations, we believe that application of parallel mass-sequencing technologies to *F. tularensis* will be highly valuable for identifying additional genetic markers that, in turn, will facilitate tracking of the zoonotic pathogen through environmental sources, blood-feeding arthropods, and mammals. In addition to a more detailed genetic analysis, we need to identify ecologic correlates to the local areas of *F. tularensis* persistence and replication. Ultimately, the goal is to gain knowledge enabling future focused interventions directed at reducing the risk for tularemia acquisition by humans visiting or living in areas in which tularemia is highly endemic.

Acknowledgments

We thank Ulla Eriksson for handling isolates from the *Francisella* Strain Collection, and Mitchell Brittnacher and Rajinder Kaul for genome sequencing of the FSC200 isolate and allowing access to the development version of the now public website, www.francisella.org. We also thank the tularemia patients for their assistance.

This study was supported by the Swedish Ministry of Foreign Affairs (FOI project no. A4952); the Swedish Research Council Formas (project no. 209-2006-1311); the County Council of Västerbotten; the Medical Faculty, Umeå University, Umeå; and the Örebro County Council Research Foundation.

Dr Svensson has been a bioinformatician at the Swedish Defense Research Agency in Umeå, Sweden, since 2001. Her research interests focus on improving genetic methods for identifying and tracing the origin of *Francisella* isolates to gain a better understanding of the epidemiology and ecology of tularemia in Scandinavia.

References

- Centers for Disease Control and Prevention. Emergency preparedness and response. Bioterrorism [cited 2009 Mar 31]. Available from <http://www.bt.cdc.gov/agent/agentlist-category.asp>
- Keim P, Johansson A, Wagner DM. Molecular epidemiology, evolution, and ecology of *Francisella*. *Ann N Y Acad Sci*. 2007;1105:30–66. DOI: 10.1196/annals.1409.011
- Penn RL. *Francisella tularensis* (tularemia). In: Mandell GL, Bennett JE, Dolin R, editors. *Mandell, Douglas and Bennett's principles and practice of infectious diseases*. 6th ed. Edinburgh (Scotland): Churchill Livingstone Ltd; 2005. p. 2674–85.
- Dennis DT, Inglesby TV, Henderson DA, Bartlett JG, Ascher MS, Eitzen E, et al. Tularemia as a biological weapon: medical and public health management. *JAMA*. 2001;285:2763–73. DOI: 10.1001/jama.285.21.2763
- Eliasson H, Bäck E. Tularaemia in an emergent area in Sweden: an analysis of 234 cases in five years. *Scand J Infect Dis*. 2007;39:880–9. DOI: 10.1080/00365540701402970
- Johansson A, Berglund L, Eriksson U, Göransson I, Wollin R, Forsman M, et al. Comparative analysis of PCR versus culture for diagnosis of ulceroglandular tularemia. *J Clin Microbiol*. 2000;38:22–6.
- Swedish Institute for Infectious Disease Control. Data and statistics. Tularaemia [cited 2009 Mar 31]. Available from [http://www.smittskyddsinstitutet.se/in-english/statistics/tularaemia](http://www.smittskyddsinstytutet.se/in-english/statistics/tularaemia)
- Centers for Disease Control and Prevention. Summary of notifiable diseases—United States, 2000–2006. *MMWR Morb Mortal Wkly Rep* [cited 2009 Mar 10]. Available from <http://www.cdc.gov/mmwr/summary.html>
- Johansson A, Farlow J, Larsson P, Dukerich M, Chambers E, Byström M, et al. Worldwide genetic relationships among *Francisella tularensis* isolates determined by multiple-locus variable-number tandem repeat analysis. *J Bacteriol*. 2004;186:5808–18. DOI: 10.1128/JB.186.17.5808-5818.2004
- Achtman M. Evolution, population structure, and phylogeography of genetically monomorphic bacterial pathogens. *Annu Rev Microbiol*. 2008;62:53–70. DOI: 10.1146/annurev.micro.62.081307.162832
- Statistics Sweden. Population statistics database [cited 2009 Mar 31]. Available from <http://www.ssd.scb.se>
- Olin G. The occurrence and mode of transmission of tularemia in Sweden. *Acta Pathol Microbiol Scand*. 1942;19:220–47.
- Eliasson H, Sjöstedt A, Bäck E. Clinical use of a diagnostic PCR for *Francisella tularensis* in patients with suspected ulceroglandular tularaemia. *Scand J Infect Dis*. 2005;37:833–7. DOI: 10.1080/00365540500400951
- World Health Organization. WHO guidelines on tularemia. Geneva: The Organization; 2007 [cited 2009 Mar 31]. Available from http://www.who.int/csr/resources/publications/WHO_CDS_EPR_2007_7.pdf
- Larsson P, Svensson K, Karlsson L, Guala D, Granberg M, Forsman M, et al. Canonical insertion-deletion markers for rapid DNA typing of *Francisella tularensis*. *Emerg Infect Dis*. 2007;13:1725–32.
- Germer S, Higuchi R. Homogeneous allele-specific PCR in SNP genotyping. *Methods Mol Biol*. 2003;212:197–214.
- Feil EJ, Enright MC. Analyses of clonality and the evolution of bacterial pathogens. *Curr Opin Microbiol*. 2004;7:308–13. DOI: 10.1016/j.mib.2004.04.002
- Sneath PH, Sokal RR, eds. *Numerical taxonomy: the principles and practice of numerical classification*. San Francisco: W.H. Freeman and Company; 1973.
- Lantmäteriet—the Swedish mapping, cadastral and land registration authority. RT 90 Coordinate system [cited 2009 Mar 31]. Available from <http://www.lantmateriet.se>
- Vogler AJ, Birdsell D, Price LB, Bowers JR, Beckstrom-Sternberg SM, Auerbach RK, et al. Phylogeography of *Francisella tularensis*: global expansion of a highly fit clone. *J Bacteriol*. 2009;191:2474–84. DOI: 10.1128/JB.01786-08
- Petersen JM, Carlson JK, Dietrich G, Eisen RJ, Coombs J, Janusz AM, et al. Multiple *Francisella tularensis* subspecies and clades, tularemia outbreak, Utah. *Emerg Infect Dis*. 2008;14:1928–30. DOI: 10.3201/eid1412.080482
- Farlow J, Wagner DM, Dukerich M, Stanley M, Chu M, Kubota K, et al. *Francisella tularensis* in the United States. *Emerg Infect Dis*. 2005;11:1835–41.
- Staples JE, Kubota KA, Chalcraft LG, Mead PS, Petersen JM. Epidemiologic and molecular analysis of human tularemia, United States, 1964–2004. *Emerg Infect Dis*. 2006;12:1113–8.

24. Kugeler KJ, Mead PS, Janusz AM, Staples JE, Kubota KA, Chalcraft LG, et al. Molecular epidemiology of *Francisella tularensis* in the United States. *Clin Infect Dis*. 2009;48:863–70. DOI: 10.1086/597261
25. Larsson P, Elfsmark D, Svensson K, Wikström P, Forsman M, Bretin T, et al. Molecular evolutionary consequences of niche restriction in *Francisella tularensis*, a facultative intracellular pathogen. *PLoS Pathog*. 2009;5:e1000472. DOI: 10.1371/journal.ppat.1000472
26. Alland D, Whittam TS, Murray MB, Cave MD, Hazbon MH, Dix K, et al. Modeling bacterial evolution with comparative-genome-based marker systems: application to *Mycobacterium tuberculosis* evolution and pathogenesis. *J Bacteriol*. 2003;185:3392–9. DOI: 10.1128/JB.185.11.3392-3399.2003
27. Pearson T, Busch JD, Ravel J, Read TD, Rhoton SD, U'Ren JM, et al. Phylogenetic discovery bias in *Bacillus anthracis* using single-nucleotide polymorphisms from whole-genome sequencing. *Proc Natl Acad Sci U S A*. 2004;101:13536–41. DOI: 10.1073/pnas.0403844101
28. Becker N, Petric D, Zgomba M, Boase C, Dahl C, Lane J, et al. Mosquitoes and their control. London: Kluwer Academic/Plenum Publishers; 2003.
29. Schäfer ML, Lundström JO, Petersson E. Comparison of mosquito (Diptera: *Culicidae*) populations by wetland type and year in the lower river Dalälven region, Central Sweden. *J Vector Ecol*. 2008;33:150–7. DOI: 10.3376/1081-1710(2008)33[150:COMDCP]2.0.CO;2
30. Pavlovsky E. Natural nidity of transmissible diseases. Urbana (IL): University of Illinois Press; 1966.
31. Goethert HK, Telford SR III. Nonrandom distribution of vector ticks (*Dermacentor variabilis*) infected by *Francisella tularensis*. *PLoS Pathog*. 2009;5:e1000319. DOI: 10.1371/journal.ppat.1000319

Address for correspondence: Anders Johansson, Department of Clinical Microbiology, Infectious Diseases, Umeå University Hospital, SE-901 85 Umeå, Sweden; email: anders.johansson@climi.umu.se

EMERGING INFECTIOUS DISEASES®

www.cdc.gov/eid



To subscribe online:

<http://www.cdc.gov/ncidod/EID/subscribe.htm>

Return:

Email:
eideditor@cdc.gov

Fax: 404-639-1954

or mail to:

EID Editor
CDC/NCID/MS D61
1600 Clifton Rd, NE
Atlanta, GA 30333
USA

- Subscribe to print version
 Unsubscribe from print version
 Update mailing address

Number on mailing label: _____

Name: _____

Full mailing address: (BLOCK LETTERS)

Appendix Table 1. Isolate and patient information, *Francisella tularensis* infections, Ljusdal, Sweden

Year	Onset week	Genetic group	Genotype identification	Age, y/sex	Patient self-estimate*	FSC no.†	
1995	32	1e	15	13/M	1	173	
		1e	15	22/F	2	174	
		1e	15	32/F	1	325	
		1e	15	13/F	1	326	
	33	1e	15	52/M	1	328	
		1e	15	12/F	2	329	
		1e	15	50/M	2	179	
		1e	15	47/F	1	244	
		1e	15	25/M	4	245	
		1e	15	4/M	1	330	
		1e	15	15/F	1	165	
	34	1e	15	37/F	2	167	
		1e	15	64/F	1	171	
	1998	31	1e	15	4/F	2‡	200§
		32	1e	15	4/M	2‡	201
33		1e	15	7/M	1	202	
34		1e	15	53/F	1	204	
		1e	15	51/F	1	203	
		1e	15	21/M	3	205	
35		1e	15	36/M	3	206	
		1e	16	31/M	4	207	
		1e	16	54/F	1	208	
		1e	15	54/F	2	209	
		1e	15	52/F	1	210	
37		1e	16	48/M	3‡¶	211	
		1e	15	4/M	4	212	
		1e	15	6/F	2‡	213	
		1e	15	10/F	2‡	218	
		1e	15	59/M	1	226	
		1e	15	83/M	4	214	
		1e	15	68/M	4	215	
		1e	15	34/F	1	216	
		1e	15	34/M	3	217	
		1e	15	78/F	3	219	
38		1e	15	59/F	1	224	
		1e	15	1/F	1‡	222	
		1e	15	66/M	2	225	
39		1e	15	27/M	4	223	
		1e	15	38/F	1	227	
2002		33	1e	15	31/F	4	346
2005	28	1e	15	9/M	4	626	
	29	1e	15	44/M	2‡	627	
	31	1e	15	58/M	1	629	
		1e	15	11/M	4	630	
		1e	15	69/M	2	631	
		1e	15	41/F	1	636	
	32	1e	15	69/M	1	645	
		1e	15	53/F	2‡	634	
	34	1c	9	52/F	2‡	638	
		3	19	44/M	2‡	641	
		1e	15	90/M	1	648	
	35	1e	15	36/M	4	646	
		1e	15	12/M	1	649	
		1e	15	58/M	2	650	
	39	1b	8	59/M	4	661	
		1e	16	13/F	4	662	

*Patient self-estimate of spatial data quality: 1, certain; 2, probable; 3, possible; 4, only residential address was available.

†FSC, *Francisella* Strain Collection (FOI, Umeå, Sweden).

‡The patient indicated multiple places of infection.

§A draft genome sequence of isolate FSC200 is available at GenBank with accession no. AASP00000000.

¶The patient indicated multiple places of infection with identical data quality estimates.

Appendix Table 2. Isolate and patient information, *Francisella tularensis* infections, Örebro, Sweden

Year	Onset week	Genetic group	Genotype identification	Age, y/sex	Vector*	Patient self-estimate†	FSC no.‡
2000	33	2	17	74/F	–	1	285
	37	1b	4	11/M	m	2	279
2002	33	1d	12	59/F	–	2§	348
		2	17	40/F	m	2§	345
	35	2	17	67/F	m	2	347
		1d	13	45/M	–	3§¶	343
	37	1d	13	10/M	m	2§	341
	38	1d	13	60/M	–	2	351
2003	27	1b	5	84/M	t	1	371
		1d	13	3/M	m	1	362
	28	1b	5	37/F	h,m	2	369
		1d	13	64/M	–	3	432
		1a	2	53/M	m	1	401
		1c	10	75/M	h,m	1	364
	29	2	18	64/M	–	2	366
		1b	5	5/M	t	2§	363
		1d	13	58/F	m	2	361
		1d	13	61/F	m	1	377
	30	2	17	40/M	–	3	397
		1a	2	68/F	m	2	396
		1d	13	69/M	–	2§	398
		1b	5	16/M	–	3§¶	399
	31	1b	5	52/M	m	2	400
		1d	13	65/F	h,m	3§¶	380
		1b	6	16/F	–	3§¶	391
		1c	9	57/F	m	1	378
	32	1a	2	17/F	–	3§¶	379
			1a	1	45/M	–	2§
		2	17	42/M	–	3§¶	376
		1d	13	70/F	m	2	389
		1b	5	65/M	m	3	430
		1d	13	30/M	m	2§	393
		1d	12	37/M	–	3§¶	394
		1d	13	14/M	–	4	421
		1d	13	3/F	–	2	372
		1c	11	76/M	–	2	408
		1d	13	11/M	–	4	424
		1d	13	69/M	h,m	2§	406
		1b	5	49/M	–	3§¶	405
		33	1a	1	47/F	m	2§
	2			17	53/M	m	3§¶
	1d		13	54/F	–	1	420
	1d		13	43/M	h,m	3§¶	384
	1d		13	37/M	m	3§¶	449
	1d		13	51/M	m	3	419
	1a		2	25/M	m	3§¶	423
	1d		13	27/F	–	3	443
	2		17	75/M	m	1	426
	1d		13	63/M	m	2§	410
	1a		2	36/M	m	2	416
	34		1b	7	73/F	m	1
		1d	13	35/F	m	2	412
		1d	12	57/M	–	2	409
		1d	14	55/M	m	2§	429
1a		1	79/F	m	1	434	
1d		12	52/M	–	3§¶	438	

		1d	13	66/F	–	3§¶	442
	35	1b	5	52/F	h	1	440
		1d	12	43/M	–	4	446
		1a	1	39/F	m	1	444
	36	1d	12	83/F	m	1	447
		1d	12	51/M	m	3§¶	448
2004	31	2	17	52/F	h,m	2	519
	32	1a	1	67/F	h	1	521
	33	1b	5	63/F	m	2	523
		1a	1	74/F	–	4	527
		1d	13	71/F	m	2§	538
		2	17	36/F	m	2	535
	34	2	17	69/F	–	2	529
		1b	6	47/M	–	3	532
		1d	12	69/F	–	2	542
		1b	5	57/F	m	2	526
		2	17	12/M	–	2	540
		1d	13	81/M	m	2	531
		1d	12	62/F	m	2	534
	35	1d	13	55/M	m	2§	533
		1b	3	56/F	h,m	2	548
	36	1b	5	72/M	–	3§¶	546
		1d	12	66/F	m	2	547
	38	1d	13	55/M	–	2	549

*Tularemia transmission vectors pinpointed by the patient were mosquitoes (m), ticks (t), horse flies (h), and unknown (–).

†Patient self-estimate of spatial data quality: 1, certain; 2, probable; 3, possible; 4, only residential address was available.

‡FSC, *Francisella* Strain Collection (FOI, Umeå, Sweden).

§The patient indicated multiple places of infection.

¶The patient indicated multiple places of infection with identical data quality estimates.

Landscape Epidemiology of Tularemia Outbreaks in Sweden

Technical Appendix

Satellite overviews and photos of tularemia foci in Ljusdal and Örebro, Sweden, to illustrate the local environmental conditions.

Appendix Figures 1-2 correspond to Figure 2 in article.

Figure 1. Central parts of Ljusdal municipality. © Lantmäteriet Gävle 2009. Grant I 2009/0301.



Figure 2. The golf course in Ljusdal.



Appendix Figures 3-6 correspond to Figure 4 in article.

Figure 3. Eastern parts of Örebro city and the Oset/Rynningeviken nature reserve. **a)** Oset/Rynningeviken waterpark recreational area in Örebro, a restored wetland area established between 1993 and 2006 on a former waste disposal site. **b)** The Örebro marina and Alnängarna bathing place. **c)** Alnängarna allotment garden in central parts of Örebro with approximately 300 cottages. © Lantmäteriet Gävle 2009. Grant I 2009/0301.



Figure 4. The Örebro marina and Alnängarna bathing place. © Lantmäteriet Gävle 2009. Grant I 2009/0301.



Figure 5. Alnängarna allotment garden in central parts of Örebro with approximately 300 cottages.



Figure 6. Lake Lången, 5 km N. Örebro. © Lantmäteriet Gävle 2009. Grant I 2009/0301.

