

# Pandemic Influenza and Excess Intensive-Care Workload

Raoul E. Nap, Maarten P.H.M. Andriessen, Nico E.L. Meessen, Dinis dos Reis Miranda, and Tjip S. van der Werf

In the Netherlands a major part of preparedness planning for an epidemic or pandemic consists of maintaining essential public services, e.g., by the police, fire departments, army personnel, and healthcare workers. We provide estimates for peak demand for healthcare workers, factoring in healthcare worker absenteeism and using estimates from published epidemiologic models on the expected evolution of pandemic influenza in relation to the impact on peak surge capacity of healthcare facilities and intensive care units (ICUs). Using various published scenarios, we estimate their effect in increasing the availability of healthcare workers for duty during a pandemic. We show that even during the peak of the pandemic, all patients requiring hospital and ICU admission can be served, including those who have non-influenza-related conditions. For this rigorous task differentiation, clear hierarchical management, unambiguous communication, and discipline are essential and we recommend informing and training non-ICU healthcare workers for duties in the ICU.

In the Netherlands a major part of preparedness planning for an epidemic or pandemic, e.g., avian influenza A, consists of maintaining essential services provided by the police, fire departments, army personnel, and healthcare workers (HCWs). Even if an effective vaccine against avian influenza (H5N1) would be available (1), preparation for a pandemic is still vital to maintain optimal care for acute-care patients and those with influenza-like illness (ILI). The preparation for excess workloads among HCWs becomes even more important with the emergence of highly pathogenic avian influenza strains.

We present a model to show the impact of the increased demand in HCWs with the increase in the number of hospi-

talized patients. We factor in the notion that the number of HCWs will be reduced because of increased absenteeism, which in turn affects the utilization of intensive-care beds and mechanical ventilation capacity. We present scenarios aiding in temporarily increasing the work force of HCWs in the intensive-care unit (ICU) environment using different additive strategies. Because the surge capacity of intensive-care resources is typically limited (2), we explore what training and preparation HCWs and managers at different levels will need to face the challenges posed by pandemic influenza.

## Methods

### Setting

The University Medical Center Groningen (UMCG) is a tertiary-care university hospital covering  $\approx 12\%$  of the total Dutch population and  $\approx 30\%$  of the total surface area of the Netherlands. Under Dutch law, UMCG plays a dominant role in the region to organize and coordinate healthcare surge capacity during a catastrophe such as an avian influenza pandemic. With regional and municipal health authorities, general practitioners, and medical and managerial representatives of all 15 hospitals in the northern Netherlands region, training courses were organized for pandemic influenza. These courses emphasized the need for enhanced collaboration, sharing of information, and communication. Part of this training course was the development of an epidemiologic model to assess the regional impact of a pandemic and the extent of possible preparations (3) at both managerial and medical domains.

### Basic Model

We used FluSurge 2.0 (4) and a computer model in an Excel (Microsoft, Redmond, WA, USA) file developed by one of the authors to calculate the impact of an influenza

Author affiliation: University of Groningen, Groningen, the Netherlands

DOI: 10.3201/eid1410.080440

pandemic in the Netherlands on hospital admission and occupancy rate of all ICU beds (i.e., those with facilities for mechanical ventilation) (3,5). Data on population (slightly >1.7 million) and age distribution were obtained from publicly available sources. Because age distribution in the Dutch population data was provided in blocks of 5 years, we converted these data to an even distribution to enable calculations with the FluSurge program (6). Data on total hospital beds, ICU beds, and number of nurses and their fulltime equivalents were obtained from publicly available sources (7). Information on ICU capacity was also obtained from reports from hospital administrators during the training sessions. These data on reported ICU capacity were discussed during a semistructured telephone interview with intensive-care specialists (usually anesthetists or internists) in August 2006. On the basis of these data, we estimated the regular bed capacity and maximal surge capacity. Numbers on the effects of pandemic influenza on healthcare services were adopted from the National Institute for Public Health and the Environment (RIVM) (5,8). RIVM presented tables for 25% and 50% disease attack rates (ARs) that represented best and worst case scenarios. From these tables, we calculated the 30% AR by linear transformation. A 30% AR is the most likely scenario according to the Centers for Disease Control and Prevention and RIVM. The AR was defined as the percentage of the population that became ill.

We also calculated within the model the total number of patients admitted to the hospitals at each point in time during the pandemic. We defined the first day (day 0) as the moment the World Health Organization (WHO) declares effective human-to-human transmission (phase IV or V in the current WHO phase of pandemic alert). We assume the pandemic would reach the Netherlands  $\approx$ 15 days after this first confirmed, effective human-to-human transmission.

We took into account the time each patient would occupy a hospital or ICU bed (range 8–15 days), based on experience with patients admitted to ICU with diagnoses of pneumonia or sepsis. Finally, we incorporated estimated risk for death per patient, a rate that in turn would reduce the number of admitted patients at any 1 time. Because RIVM data are in weekly blocks, we evenly distributed the number of hospital admissions and deaths during weekdays. We also factored in our calculations the effect of treatment (within 48 hours of infection) with antiviral medication on the spread and impact of the pandemic, although the exact effect size is still uncertain (6,9). Antiviral medication is assumed to reduce the total number of hospital admissions by 50% and death by  $\approx$ 30%.

In the basic model we incorporated the probable absenteeism of HCWs attributable to illness. We assumed that HCWs will become ill at a similar rate as the normal population. We used the total number of HCWs and linearly

transformed the ratios of illness and death of the population over time on the HCW database. We focused our preparedness plan on adults and assumed a pattern in the outbreak similar to that for Spanish flu (10) and severe acute respiratory syndrome, in which adolescents and adults accounted for most patients.

### Modeling Nursing Workload

We developed an extension to this model that showed the effects of increased demand in the HCW force because of an increased number of hospitalized patients with ILI. In this model, we factored in the notion that the number of available key HCWs (e.g., physicians, intensive-care nurses) would be reduced because of ILI absenteeism, which affects the use of ICU beds and mechanical ventilation capacity.

Furthermore, using different additive strategies reported in the literature, we present several alternatives to increase the number of available HCWs. All 3 scenarios were adopted because of their inherent ease of use in daily hospital practice.

We used the basic model (3,5) for peak hospital and ICU occupancy rates during a pandemic of influenza. A major part of preparation encompasses clearing all 15 regional hospitals of general surgical and medical patients, leaving  $\approx$ 30% of acute-care capacity for non-influenza-related illness. In these 15 hospitals, the total ICU capacity is 200 beds. The predominant use of ICU beds in Europe is for postoperative care (instead of recovery rooms or post-anesthesia special-care units) (11). Of these, 60 ICU beds (30%) need to be reserved for acute care for non-influenza-related illness, leaving  $\approx$ 140 ICU beds for influenza-related patients. The mean ICU length of stay for postoperative and general medical care patients is 3.4 (median 1 day, standard deviation [SD] 7.4) days. Therefore, it follows that  $\approx$ 96% of these 140 ICU beds occupied by postoperative and general medical care patients at the beginning of the pandemic can be made available within a 14-day period for patients ill from flu.

Even though we assume HCWs will become ill at the same rate as the general population, we also assume that morale and professionalism will be high and that undue absenteeism will not occur. That is, adherence to professional standards of HCWs reporting for duty will be high, although some unavailability of HCWs might be expected because of care duties within families or among neighbors who may become ill (12). This erosion has not been taken into account in the model we present.

To model the available number of HCWs in relation to the maximum number needed in a pandemic, we translated the peak ICU occupancy rate into a severity of illness and workload scoring system. A variety of validated scoring systems for patient severity and workload exist for use in the ICU environment and are widely used (13–18).

We used data derived from the databases of the European Research in Intensive Care Units (EURICUS) projects, a multicenter project designed to study the ICUs of the European Union (EU), to project severity of illness, diagnosis, and workload data in the ICU. A description of the methods, objectives, and results of these projects have been reported (11,15,19,20). These projects were developed from 1994 through 2000 and included 137 ICUs from 14 different EU states with a total of 43,027 individual patient records and 227,209 nursing days. Many study variables were analyzed, including age, diagnosis, length of stay, Simplified Acute Physiology Score (SAPS-II) (14), Sequential Organ Dysfunction Score (SOFA-II) (21), ICU mortality rate, hospital mortality rate, and Glasgow Coma Score. Part of this research was the measurement of nursing workload in ICUs (15–17). Nursing workload per intensive-care patient was calculated by using the Nine Equivalents of Nursing Manpower use score (NEMS) (16). NEMS is a therapeutic index to measure nursing workload at the ICU level. The use of NEMS has been developed and validated for multicenter ICU studies; management purposes in the general (macro) evaluation and comparison of workload at the ICU level; and prediction of workload and planning of nursing staff allocation at the individual patient level. NEMS correlates highly with all currently used severity of illness scoring systems such as Acute Physiology, Age, Chronic Health Evaluation III, SAPS-II, and SOFA-II (16,20). The major advantage of all these scoring systems is that they are an objective and reproducible measure of nursing workload related to the various activities performed in the ICU, without considering the appropriateness of standing policies of medical care.

We attributed scores on the basis of a specific diagnostic category (13) to the corresponding NEMS points from the EURICUS projects database. We used the medical diagnostic category “bacterial/viral pneumonia” (diagnosis category 15) as an indicator for nursing care requirements of ILI patients, as this closely matches the medical condition typical for influenza patients. Furthermore, we used the average NEMS points for all patients (minus the patients with diagnosis 15) in the EURICUS database as an indicator for the nursing workload necessary for the non-ILI acute-care patients. We modeled the available HCWs with a 30% AR, 25% and 50% ICU admission rate, and mean length of stay of 8 days and 15 days without antiviral medication (AVM) (pandemic period 9 weeks) and 30% AR, 25% and 50% ICU admission rate, and mean length of stay of 8 days or 15 days with AVM (pandemic period 14 weeks).

## Scenarios

### Scenario 1

Increasing the number of HCWs by expanding the work shift from 8 to 12 hours would increase the number of

operational HCWs by  $\approx 50\%$ . The huge strain on personnel is justified, when one considers the relatively short peak surge period, and we expect HCWs to comply.

### Scenario 2

HCWs will become sick with ILI at the same rate as the general population. Lee and Chen (22) showed that 8 weeks' prophylactic use of neuraminidase inhibitors decreased peak absenteeism among HCWs from 10% to 2%. We translated this in our model by reducing the number of lost NEMS points (e.g., number of lost HCWs) by 80% for the entire pandemic period.

### Scenario 3

In an international ICU workload study, Miranda et al. (17) showed that tasks performed in normal ICU environment by ICU nurses are only 30% dedicated to technical and specific ICU tasks for which ICU nurses are trained. This result means 70% of all tasks in ICU are regular nursing tasks performed daily in non-ICU, standard healthcare hospital environments. In this scenario, we mathematically decreased the number of NEMS points to be covered by ICU nurses to 30%. Non-ICU nurses and other hospital personnel (communication advisors, psychologists, physicians, administrative staff, and the like) have to be prepared and trained to take over, for a relatively short period, the 70% of nontechnical duties regularly performed by ICU nurses. We assume that there will be substantial numbers of HCWs in wards and ancillary facilities available because all hospitals involved will stop admitting postoperative care and non-influenza-related medical patients when WHO declares the pandemic alert. This will free  $\approx 70\%$  of all HCWs in the 15 hospitals.

### Scenario 4

Finally, we combined the effects of all 3 scenarios in an overall model of available HCWs. This final model gives the opportunity to study the effect of 3 easy-to-implement scenarios.

## Results

The Table shows the result of our baseline calculations. For the 30% non-ILI acute-care patients, we attributed 24.8 (SD 9.9) mean NEMS points; for the ILI patients, we attributed 28.6 (SD 9.8) mean NEMS points. We assume that an ICU nurse can deliver 46.3 NEMS points in 24 hours. Because HCWs will become ill as the population does, the number of NEMS points available will be reduced as the pandemic period progresses; the lowest number will occur at 28 days, when the pandemic period is assumed to be at its highest point (online Appendix Table 1, available from [www.cdc.gov/EID/content/14/10/1518-appT1.htm](http://www.cdc.gov/EID/content/14/10/1518-appT1.htm)). The lowest number of NEMS points will occur at day 43, when AVM

Table. Study population characteristics from EURICUS projects\*

| Characteristic                | Study population | Diagnosis category 15† |
|-------------------------------|------------------|------------------------|
| Total no.                     | 39,158           | 1,413                  |
| ICU length of stay, mean (SD) | 5.2 (10.4)       | 10.5 (13)              |
| Age, no. (%)                  | 59.3 (19.8)      | 57.7 (21.8)            |
| SAPS-II, no. (%)              | 31.9 (17.8)      | 39.5 (18.8)            |
| NEMS, no. (%)                 | 24.8 (9.9)       | 28.6 (9.8)             |
| ICU deaths, %                 | 13               | 27                     |
| Overall deaths, %             | 19               | 36                     |

\*ICU, intensive care unit; SAPS, Simplified Acute Physiology Score; NEMS, Nine Equivalents of Nursing Manpower use score.

†Values are given as mean (SD).

is available for the population (online Appendix Table 2, available from [www.cdc.gov/EID/content/14/10/1518-appT2.htm](http://www.cdc.gov/EID/content/14/10/1518-appT2.htm)). As can be seen from both online Appendix Tables, HCW shortage will occur if the ICU admission rate increases to 50% (mean length of stay 8 days or 15 days without AVM). However, if AVM is available, no HCW shortage will occur, under the premises that all general medicine and surgery have been temporarily stopped.

## Scenarios

### Scenario 1

In Figure 1, panels A and B, the results are given for the model length of stay of 15 days, with 25% and 50% ICU admission rates with and without AVM. Even in the worst case scenario, a 15-day length of stay without availability of AVM for the individual patient (Figure 1, panel A), no staff shortage appears. The models for a length of stay of 8 days, 25% and 50% ICU admission with and without AVM (not shown), show no staff shortage over time.

### Scenario 2

If the number of HCWs who become ill from ILI is reduced by 80%, a similar increase of deliverable NEMS points is achieved. This increase is irrespective of the number of patients admitted to the hospital and ICU. In Figure 2, panels A and B, results are given for the models with a 15-day length of stay, 25% and 50% ICU admission rate, with and without AVM. In this model, the effect of potential HCW staff shortage is most profound at a 50% ICU admission rate. Even decreasing the number of ill HCWs because of 8 weeks' prophylactic use of neuraminidase inhibitors (22) does not solve staff shortage when it is most needed.

### Scenario 3

Transfer of tasks to other HCWs than ICU nurses decreases the number of NEMS points needed by 70%. We assume acute-care and ILI patients admitted to the ICU will require the 30% technical ICU-related work of ICU nurses. This decrease in the number of NEMS points needed has a

direct effect on the necessary workload in the different AR and length-of-stay models. Figure 3, panels A and B, shows that decreasing the number of required NEMS in the ICU results in sufficient numbers of HCWs being available for care of ILI patients.

### Scenario 4

We combined all 3 scenarios to assess the impact of the 3 relatively easy to implement scenarios on HCW availability. Figure 4, panels A and B, shows the effects of all 3 scenarios on the NEMS points availability.

## Discussion

We provide calculations, which incorporate HCW absenteeism, for the surge capacity in HCWs in case of an influenza pandemic. In our model, we have shown that business continuity is maintainable when strict, clear, and disciplined hierarchical structures are in place.

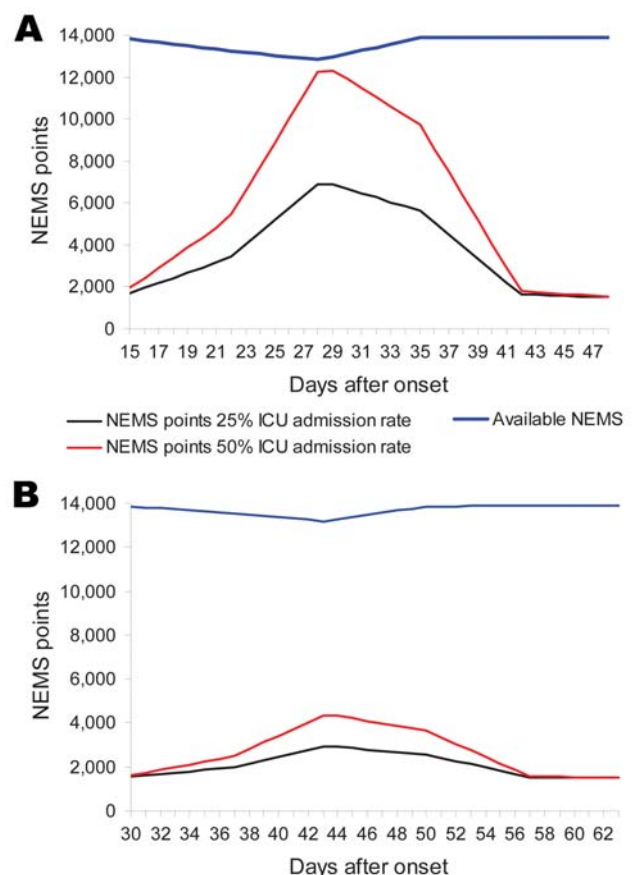


Figure 1. A) Amount of Nine Equivalents of Nursing Manpower use (NEMS) points needed and available by 25% and 50% admission rate in the intensive care unit (ICU) scenario 1, expanding healthcare worker (HCW) work hours from 8 to 12 h per 24 h (pandemic period 9 wk). B) Amount of NEMS points needed and available by 25% and 50% admission rate in ICU scenario 1, expanding HCW work hours from 8 to 12 h per 24 h (pandemic period 14 wk).



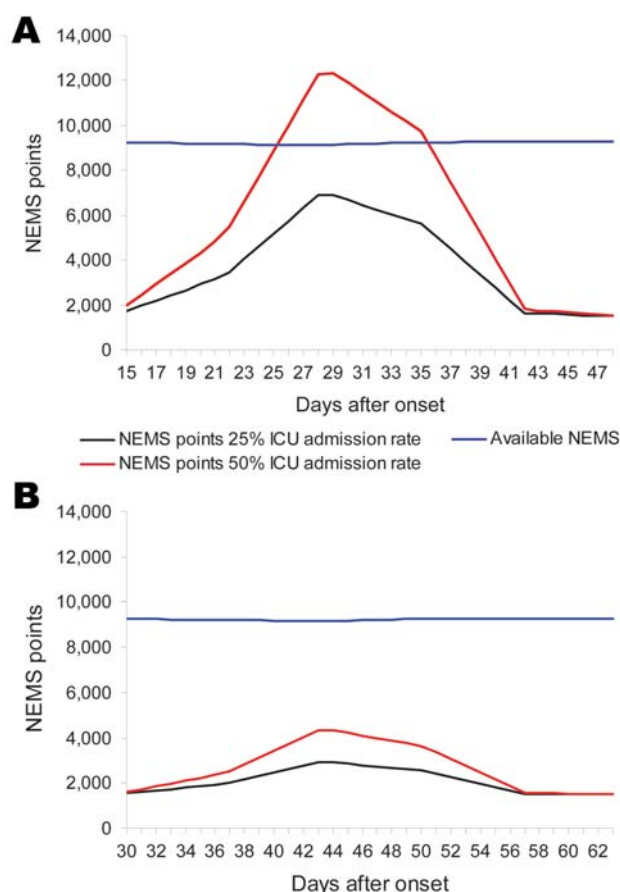


Figure 2. A) Amount of Nine Equivalents of Nursing Manpower use (NEMS) points needed and available by 25% and 50% admission rate in the intensive care unit (ICU) scenario 2, healthcare worker (HCW) 8 wk prophylactic use of neuraminidase inhibitors (pandemic period 9 wk). B) Amount of NEMS points needed and available by 25% and 50% admission rate in the ICU scenario 2, HCW 8 wk prophylactic use of neuraminidase inhibitors (pandemic period 14 wk).

### Recommendation 1

Start preparations in time. When WHO declares phase IV, stop admitting all general patients, clear hospital beds, and free up HCWs. If hospitals are not cleared from responsibility for postoperative and general medical patients and if admitting general patients is not stopped, not only will there not be enough hospital and ICU beds available for ILI patients but also unnecessary risk for exposure to ILI will be placed on these patients. This step is mandatory in all hospital preparedness planning.

### Recommendation 2

Implement a simple nursing workload measurement system for scarce resources. This will provide valuable information on the current workload and will aid in planning for a pandemic (23–26).

### Recommendation 3

Gain insight, per hospital, about general and acute-care populations. This will provide information about the number of hospital and ICU beds and the number of HCWs capable of being cleared for work with ILI patients.

Length of stay for individual ICU patients is the predominant factor in capacity planning for a pandemic. We show in our results, for a worst case scenario of patients kept in ICU for 15 days, that demand for workload and ICU beds exceeds capacity (3). Reducing the length of stay of some patients will increase the capability of hospitals to serve most ILI patients. Therefore, we propose that a strong distinction be made between cure and care. During a pandemic, elderly patients with severe co-existing conditions may opt for supportive care without hospital and/or ICU admission, in consultation with their loved ones and their general practitioners. These patients may die because of ILI.

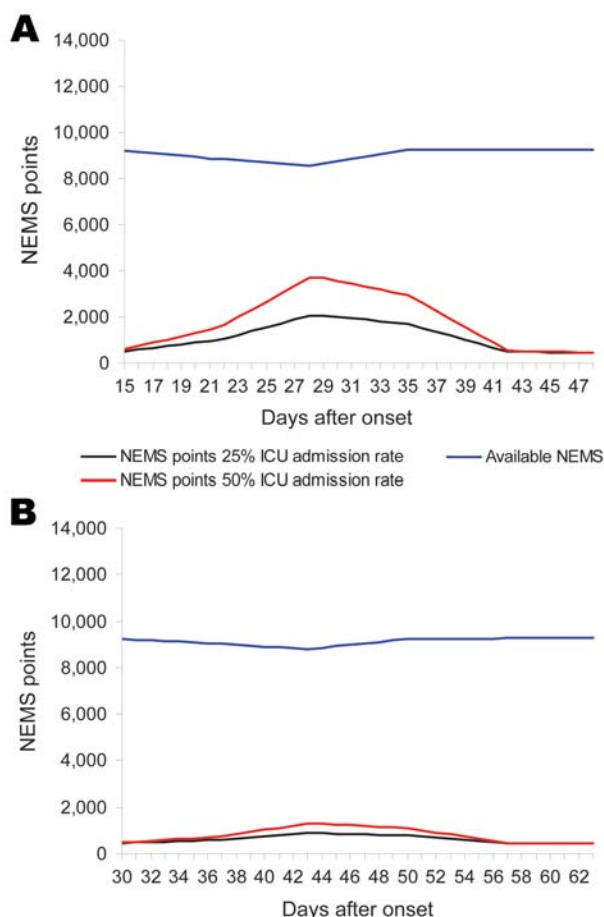


Figure 3. A) Amount of Nine Equivalents of Nursing Manpower use (NEMS) points needed and available by 25% and 50% admission rate in intensive-care unit (ICU) scenario 3, task differentiation in healthcare workers (HCWs) (pandemic period 9 wk). B) Amount of NEMS points needed and available by 25% and 50% admission rate in ICU scenario 3, task differentiation in HCWs (pandemic period 14 wk).

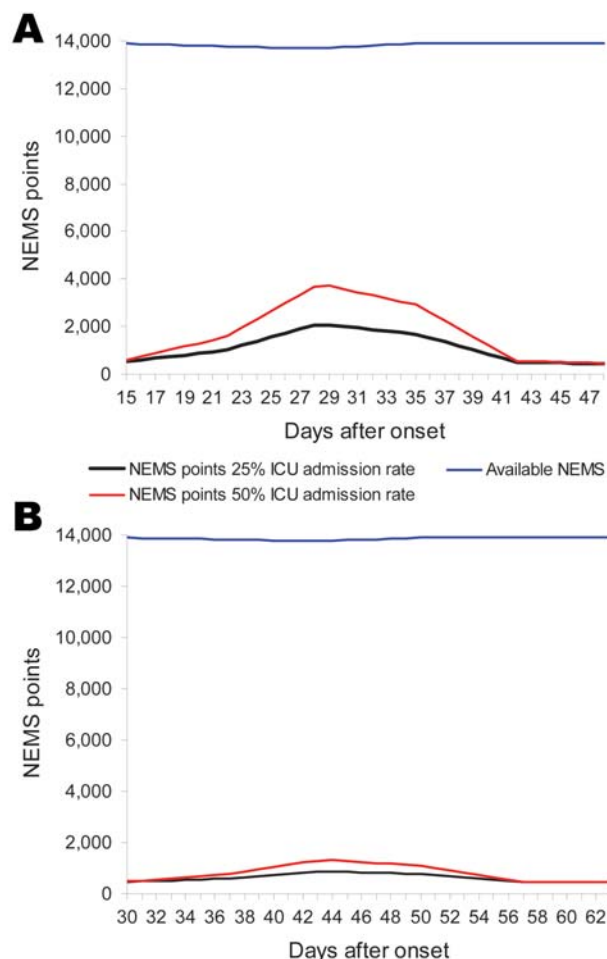


Figure 4. A) Amount of Nine Equivalents of Nursing Manpower use (NEMS) points needed and available by 25% and 50% admission rate in intensive care unit (ICU) scenarios 1, 2, and 3, combined effect of all 3 scenarios (pandemic period 9 wk). B: Amount of NEMS points needed and available by 25% and 50% admission rate in ICU scenario 1, 2, and 3, combined effect of all 3 scenarios (pandemic period 14 wk)

The smallest gain in available NEMS points occurred with scenario 2, i.e., 8 weeks' prophylactic use of neuraminidase inhibitors for HCWs. Although prophylactic use of neuraminidase inhibitors serves an important role in staff protection (27) and will most likely enhance HCW compliance, it serves its role specifically at the individual HCW level instead of at the workload level. The largest effect on availability of NEMS points is with scenario 3. Through insight about workload of ICU nurses and other HCWs, rigorous task differentiation can be obtained, and even specific tasks can be delegated to non-HCW specialists (for example, communication with family members of deceased patients can be done by hospital spokespersons and communications experts).

Furthermore, if all general medical and surgical patients are cleared from all hospitals in the northern part of the Netherlands, 932 medical specialists (anesthesiologists, surgeons, internal medicine, cardiologists, and cardiothoracic surgeons) can be used to provide care for acute-care and influenza patients. This strategy would greatly enhance the number of HCWs for pandemic influenza per hospital.

Finally, UMCG has 2,470 undergraduate and graduate medical students, 367 dentistry students, and 423 students' behavioral and social sciences in 2006. There are also 1,240 nursing science students and 2,391 health science students at the Hanze University Groningen of Applied Sciences. If indeed 44.3% (28) (226 of 510 medical students) of healthcare-related students were to report for duty in case of a HCW shortage, 3,053 extra HCWs could be recruited for duty during a pandemic to fill the potential gaps in healthcare delivery. These students would be distributed among all 15 hospitals in the region, giving each  $\approx 203$  extra HCWs.

There are several limitations to our analysis. The report by the Writing Committee of the Second World Health Organization Consultation on Clinical Aspects of Human Infection with Avian Influenza (29) prompts us to discuss the impact these findings have on preparedness planning of healthcare organizations. The case-fatality rate of 61% in total, especially among persons 10 to 19 years of age, and the much lower rate in persons  $\geq 50$  years of age are different from the reported rates of past pandemics (30–32). This increased case-fatality rate in the 10- to 19-year age group will have a tremendous effect on pandemic preparedness planning and the model presented here for hospital and healthcare institutions. Until now, we assumed persons 10–19 years of age made up only a small percentage of potential hospitalized persons (3). The question that has not been answered by the Writing Committee is whether this age group's particular risk is because this age group is mainly responsible for handling poultry and poultry products in reports on avian influenza. In the Netherlands, there are  $\approx 2$  million persons (12%) in this age category among the country's 16.4 million inhabitants. The same proportion holds for the 27 countries of the European Union (494 million inhabitants, 57 million persons 10–19 years of age [11.7%]).

In affluent countries, preparation for a pandemic is mostly supported and financed at the national level, and the overall belief is that hospital and intensive-care capacity will suffice. Less affluent countries might have more difficulties with pandemic preparation. The Writing Committee does not provide guidelines for preparation. For affluent countries, the economic ramifications of "losing" the younger generation struck by avian influenza might be even more dramatic than a pandemic itself because affluent countries are dealing with an increasing older population and lower birth rates.

The model used also has several limitations. The datasets of the EURICUS projects were constructed almost a decade ago. Because of changes in ICU technology and ICU nursing, decreasing emphasis on technical procedures, increased emphasis on communication within the ICU team, and communication with the patients' relatives and loved ones, some variables like NEMS (change in workload), length of stay, and ICU mortality rate (change in technical procedures) may have changed. We expect that our model presents a worst-case scenario for workload. In addition, our basic model is based on incomplete and sometimes conflicting or inconsistent information on the effects of an influenza pandemic. We assume that more reliable data will only become available in the early stages of a pandemic.

Rigorous task differentiation, clear hierarchical management, unambiguous communication, and discipline are essential. We recommend informing and training non-ICU HCWs for possible duties at the ICU. Training should address HCW needs as well as those of family and loved ones of patients with ILI admitted to the ICU. It should also incorporate the potential difficulties for HCWs in communicating with family members and loved ones if patients die after intensified treatment decisions (3,33,34).

### Acknowledgments

We thank all the colleagues from the Groningen Regional Influenza Pandemic Working Group for helpful discussions on national and local preparedness planning for influenza pandemic situation.

This study was supported by the EURICUS projects and European commission grants BMH1-CT93-1340, BMH4-CT96-0817, and BMH4-CT98-3461.

Mr Nap is pursuing a PhD degree in hospital and intensive-care capacity planning, including for infectious diseases surge capacity. His research interests include infectious disease epidemiology, disasters, and application of mathematical modeling to hospital and intensive-care resource planning.

### References

- Baras B, Stittelaar KJ, Simon JH, Thoolen RJMM, Mossman SP, Pistor FHM, et al. Cross-protection against lethal H5N1 challenge in ferrets with an adjuvanted pandemic influenza vaccine. *PLoS One*. 2008;3:e1401. DOI: 10.1371/journal.pone.0001401
- Bartlett JG. Planning for avian influenza. *Ann Intern Med*. 2006;145:141–4.
- Nap RE, Andriessen MPH, Meessen NEL, van der Werf TS. Pandemic influenza and hospital resources. *Emerg Infect Dis*. 2007;13:1714–9.
- Zhang X, Meltzer MI, Wortley P. FluSurge2.0: a manual to assist state and local public health officials and hospital administrators in estimating the impact of an influenza pandemic on hospital surge capacity (Beta test version). Atlanta: Centers for Disease Control and Prevention; 2005.
- Van Genugten MLL, Heijnen MLA, Jager JC. Pandemic influenza and healthcare demand in the Netherlands: scenario analysis. *Emerg Infect Dis*. 2003;9:531–8.
- Menon DK, Taylor BL, Ridley SA. Modelling the impact of an influenza pandemic on critical care services in England. *Anaesthesia*. 2005;60:952–4. DOI: 10.1111/j.1365-2044.2005.04372.x
- Centraal Bureau voor de Statistiek. Statistisch jaarboek 2006. Heerlen (the Netherlands): Centraal Bureau voor de Statistiek; 2006.
- Hagenaars TJ, Van Genugten ML, Wallinga J. Scenario analysis of transmission dynamics, healthcare demand and mortality. Brief report to the Health Inspectorate of the Netherlands. Bilthoven (the Netherlands): RIVM; 2003.
- Nordstrom BL, Sung I, Suter P, Szeke P. Risk of pneumonia and other complications of influenza-like illness in patients treated with oseltamivir. *Curr Med Res Opin*. 2005;21:761–8. DOI: 10.1185/030079905X46214
- Kash JC, Tumpey T, Proll S, Carter V, Perwitasari O, Thomas M, et al. Genomic analysis of increased host immune and cell death responses induced by 1918 influenza virus. *Nature*. 2006;443:578–81.
- Miranda DR, Rivera-Fernandez R, Nap RE. Critical care medicine in the hospital: lessons from the EURICUS-studies. *Med Intensiv*. 2007;31:194–203.
- Loeb M, McGeer A, Henry B, Ofner M, Rose D, Hlywka T, et al. SARS among critical care nurses, Toronto. *Emerg Infect Dis*. 2004;10:251–5.
- Knaus WA, Wagner DP, Draper EA, Zimmerman JE, Bergner M, Bastos PG, et al. The APACHE III prognostic system. Risk prediction of hospital mortality for critically ill hospitalized adults. *Chest*. 1991;100:1619–36. DOI: 10.1378/chest.100.6.1619
- Le Gall JR, Lemeshow S, Saulnier F. A new Simplified Acute Physiology Score (SAPS II) based on a European/North American multicenter study. *JAMA*. 1993;270:2957–63. DOI: 10.1001/jama.270.24.2957
- Miranda DR, de Rijk A, Schaufeli W. Simplified Therapeutic Intervention Scoring System: the TISS-28 items—results from a multicenter study. *Crit Care Med*. 1996;24:64–73. DOI: 10.1097/00003246-199601000-00012
- Reis Miranda D, Moreno R, Iapichino G. Nine equivalents of nursing manpower use score (NEMS). *Intensive Care Med*. 1997;23:760–5. DOI: 10.1007/s001340050406
- Miranda DR, Nap R, de Rijk A, Schaufeli W, Iapichino G. Nursing Activities Score. *Crit Care Med*. 2003;31:374–82. DOI: 10.1097/01.CCM.0000045567.78801.CC
- Moreno R, Miranda DR. Nursing staff in intensive care in Europe: the mismatch between planning and practice. *Chest*. 1998;113:752–8. DOI: 10.1378/chest.113.3.752
- Iapichino G, Radrizzani D, Bertolini G, Ferla L, Pasetti G, Pezzi A, et al. Daily classification of the level of care. A method to describe clinical course of illness, use of resources and quality of intensive care assistance. *Intensive Care Med*. 2001;27:131–6. DOI: 10.1007/s001340000776
- Miranda DR, Ryan D, Schaufeli WB, Fidler V. Organisation and management of intensive care: a prospective study in 12 European countries. Berlin: Springer Verlag; 1997.
- Vincent JL, de Mendonca A, Cantraine F, Moreno R, Takala J, Suter PM, et al. Use of the SOFA score to assess the incidence of organ dysfunction/failure in intensive care units: results of a multicenter, prospective study. *Crit Care Med*. 1998;26:1793–800.
- Lee VJ, Chen MI. Effectiveness of neuraminidase inhibitors for preventing staff absenteeism during pandemic influenza. *Emerg Infect Dis*. 2007;13:449–56.
- Christian MD, Hawryluck L, Wax R, Cook T, Lazar N, Herridge M, et al. Development of a triage protocol for critical care during an influenza pandemic. *CMAJ*. 2006;175:1377–81. DOI: 10.1503/cmaj.060911



24. Hick JL, O'Laughlin DT. Concept of operations for triage of mechanical ventilation in an epidemic. *Acad Emerg Med*. 2006;13:223–9. DOI: 10.1111/j.1553-2712.2006.tb01677.x
25. Iapichino G, Mistraretti G, Corbella D, Bassi G, Borotto E, Miranda DR, et al. Scoring system for the selection of high-risk patients in the intensive care unit. *Crit Care Med*. 2006;34:1039–43. DOI: 10.1097/01.CCM.0000206286.19444.40
26. Miranda DR. Management of resources in intensive-care. *Intensive Care Med*. 1991;17:127–8. DOI: 10.1007/BF01691440
27. Swaminathan A, Martin R, Gamon S, Aboltins C, Athan E, Braitberg G, et al. Personal protective equipment and antiviral drug use during hospitalization for suspected avian or pandemic influenza. *Emerg Infect Dis*. 2007;13:1541–7.
28. Herman B, Rosychuk RJ, Bailey T, Lake R, Yonge O, Marrie TJ. Medical students and pandemic influenza. *Emerg Infect Dis*. 2007;13:1781–3.
29. Writing Committee of the Second World Health Organization Consultation on Clinical Aspects of Human Infection with Avian Influenza A (H5N1) Virus. Update on avian influenza A (H5N1) virus infection in humans. *N Engl J Med*. 2008;358:261–73. DOI: 10.1056/NEJMr0707279
30. Armstrong GL, Conn L, Pinner R. Trends in infectious disease mortality in the United States during the 20th century. *JAMA*. 1999;281:61–6. DOI: 10.1001/jama.281.1.61
31. Langford C. The age pattern of mortality in the 1918–19 influenza pandemic: an attempted explanation based on data for England and Wales. *Med Hist*. 2002;46:1–20.
32. Viboud C, Tam T, Fleming D, Handel A, Miller M, Simonsen L. Transmissibility and mortality impact of epidemic and pandemic influenza, with emphasis on the unusually deadly 1951 epidemic. *Vaccine*. 2006;24:6701–7. DOI: 10.1016/j.vaccine.2006.05.067
33. Bulow HH, Sprung C, Reinhart K, Prayag S, Du B, Armaganidis A, et al. The world's major religions' points of view on end-of-life decisions in the intensive care unit. *Intensive Care Med*. 2008;34:423–30. DOI: 10.1007/s00134-007-0973-8
34. Sprung CL, Ledoux D, Bulow HH, Lippert A, Wennberg E, Baras M, et al. Relieving suffering or intentionally hastening death: Where do you draw the line? *Crit Care Med*. 2008;36:8–13.

Address for correspondence: Raoul E. Nap, University Medical Center Groningen, Directorate Medical Affairs, Quality and Safety, PO Box 30.001, Groningen 9700 RB, the Netherlands; email: r.e.nap@rvb.umcg.nl

# EMERGING INFECTIOUS DISEASES

A Peer Reviewed Journal Tracking and Analyzing Disease Trends

Vol.7, No.2, Mar–Apr 2001



Decennial Conference on Healthcare-Associated Infections

**Search  
past issues**

**EID**

*Online*

[www.cdc.gov/eid](http://www.cdc.gov/eid)



Appendix Table 1. Total NEMS points needed for ICU surge capacity and difference with HCWs available, ICU length of stay of 8 d or of 15 d without antiviral medication, ICU admission rate of 25% and 50% inclusive of acute-care demand\*

| Days after onset | Mean ICU length of stay 8 d |                                                |                        |                                                | Mean ICU length of stay 15 d |                                                |                        |                                                |
|------------------|-----------------------------|------------------------------------------------|------------------------|------------------------------------------------|------------------------------|------------------------------------------------|------------------------|------------------------------------------------|
|                  | ICU admission rate 25%      |                                                | ICU admission rate 50% |                                                | ICU admission rate 25%       |                                                | ICU admission rate 50% |                                                |
|                  | NEMS points needed          | Difference between points needed and available | NEMS points needed     | Difference between points needed and available | NEMS points needed           | Difference between points needed and available | NEMS points needed     | Difference between points needed and available |
| 15               | 1,724                       | 7,481                                          | 1,960                  | 7,245                                          | 1,717                        | 7,488                                          | 1,974                  | 7,230                                          |
| 16               | 1,960                       | 7,189                                          | 2,432                  | 6,718                                          | 1,974                        | 7,175                                          | 2,432                  | 6,718                                          |
| 17               | 2,196                       | 6,898                                          | 2,904                  | 6,190                                          | 2,203                        | 6,891                                          | 2,918                  | 6,176                                          |
| 18               | 2,432                       | 6,607                                          | 3,376                  | 5,663                                          | 2,432                        | 6,607                                          | 3,376                  | 5,663                                          |
| 19               | 2,668                       | 6,316                                          | 3,848                  | 5,136                                          | 2,661                        | 6,323                                          | 3,862                  | 5,122                                          |
| 20               | 2,904                       | 6,024                                          | 4,319                  | 4,609                                          | 2,918                        | 6,010                                          | 4,319                  | 4,609                                          |
| 21               | 3,140                       | 5,733                                          | 4,791                  | 4,082                                          | 3,147                        | 5,726                                          | 4,806                  | 4,067                                          |
| 22               | 3,472                       | 5,354                                          | 5,456                  | 3,370                                          | 3,461                        | 5,364                                          | 5,463                  | 3,362                                          |
| 23               | 3,805                       | 4,974                                          | 6,121                  | 2,658                                          | 4,033                        | 4,745                                          | 6,607                  | 2,171                                          |
| 24               | 4,137                       | 4,595                                          | 6,786                  | 1,946                                          | 4,605                        | 4,126                                          | 7,723                  | 1,009                                          |
| 25               | 4,470                       | 4,215                                          | 7,451                  | 1,234                                          | 5,177                        | 3,507                                          | 8,867                  | -182                                           |
| 26               | 4,802                       | 3,836                                          | 8,116                  | 522                                            | 5,749                        | 2,888                                          | 10,011                 | -1,373                                         |
| 27               | 5,135                       | 3,456                                          | 8,781                  | -190                                           | 6,321                        | 2,269                                          | 11,155                 | -2,564                                         |
| 28               | 5,467                       | 3,077                                          | 9,446                  | -902                                           | 6,893                        | 1,650                                          | 12,270                 | -3,726                                         |
| 29               | 4,920                       | 3,723                                          | 8,352                  | 291                                            | 6,893                        | 1,750                                          | 12,327                 | -3,684                                         |
| 30               | 4,373                       | 4,369                                          | 7,258                  | 1,484                                          | 6,693                        | 2,049                                          | 11,898                 | -3,156                                         |
| 31               | 3,826                       | 5,016                                          | 6,164                  | 2,678                                          | 6,464                        | 2,377                                          | 11,469                 | -2,628                                         |
| 32               | 3,279                       | 5,662                                          | 5,070                  | 3,871                                          | 6,264                        | 2,677                                          | 11,040                 | -2,099                                         |
| 33               | 2,732                       | 6,308                                          | 3,976                  | 5,064                                          | 6,035                        | 3,005                                          | 10,611                 | -1,571                                         |
| 34               | 2,185                       | 6,955                                          | 2,882                  | 6,258                                          | 5,835                        | 3,305                                          | 10,182                 | -1,043                                         |
| 35               | 1,638                       | 7,601                                          | 1,788                  | 7,451                                          | 5,606                        | 3,633                                          | 9,753                  | -514                                           |
| 36               | 1,617                       | 7,625                                          | 1,745                  | 7,497                                          | 5,063                        | 4,179                                          | 8,609                  | 633                                            |
| 37               | 1,595                       | 7,650                                          | 1,703                  | 7,543                                          | 4,491                        | 4,754                                          | 7,465                  | 1,780                                          |
| 38               | 1,574                       | 7,674                                          | 1,660                  | 7,588                                          | 3,919                        | 5,329                                          | 6,350                  | 2,898                                          |
| 39               | 1,552                       | 7,699                                          | 1,617                  | 7,634                                          | 3,347                        | 5,904                                          | 5,206                  | 4,045                                          |
| 40               | 1,531                       | 7,723                                          | 1,574                  | 7,680                                          | 2,775                        | 6,479                                          | 4,062                  | 5,192                                          |
| 41               | 1,509                       | 7,748                                          | 1,531                  | 7,726                                          | 2,203                        | 7,054                                          | 2,918                  | 6,339                                          |
| 42               | 1,488                       | 7,772                                          | 1,488                  | 7,772                                          | 1,631                        | 7,629                                          | 1,803                  | 7,457                                          |
| 43               | 1,488                       | 7,772                                          | 1,488                  | 7,772                                          | 1,631                        | 7,629                                          | 1,745                  | 7,515                                          |

\*NEMS, Nine Equivalents of Nursing Manpower use score; HCWs, healthcare workers; ICU, intensive care unit.

Appendix Table 2. Total NEMS points needed for ICU surge capacity and difference with HCW available NEMS points, ICU length of stay 8 d and 15 d with antiviral medication, ICU admission rate 25% and 50% inclusive of acute-care demand\*

| Days after onset | Mean ICU length of stay 8 d |                                                |                        |                                                | Mean ICU length of stay 15 d |                                                |                        |                                                |
|------------------|-----------------------------|------------------------------------------------|------------------------|------------------------------------------------|------------------------------|------------------------------------------------|------------------------|------------------------------------------------|
|                  | ICU admission rate 25%      |                                                | ICU admission rate 50% |                                                | ICU admission rate 25%       |                                                | ICU admission rate 50% |                                                |
|                  | NEMS points needed          | Difference between points needed and available | NEMS points needed     | Difference between points needed and available | NEMS points needed           | Difference between points needed and available | NEMS points needed     | Difference between points needed and available |
| 30               | 1,550                       | 7,680                                          | 1,612                  | 7,618                                          | 1,550                        | 7,680                                          | 1,612                  | 7,618                                          |
| 31               | 1,612                       | 7,588                                          | 1,736                  | 7,464                                          | 1,612                        | 7,588                                          | 1,736                  | 7,464                                          |
| 32               | 1,674                       | 7,496                                          | 1,860                  | 7,311                                          | 1,674                        | 7,496                                          | 1,860                  | 7,311                                          |
| 33               | 1,736                       | 7,405                                          | 1,983                  | 7,157                                          | 1,736                        | 7,405                                          | 1,983                  | 7,157                                          |
| 34               | 1,798                       | 7,313                                          | 2,107                  | 7,003                                          | 1,798                        | 7,313                                          | 2,107                  | 7,003                                          |
| 35               | 1,860                       | 7,221                                          | 2,231                  | 6,849                                          | 1,860                        | 7,221                                          | 2,231                  | 6,849                                          |
| 36               | 1,921                       | 7,129                                          | 2,355                  | 6,696                                          | 1,921                        | 7,129                                          | 2,355                  | 6,696                                          |
| 37               | 2,008                       | 7,005                                          | 2,529                  | 6,484                                          | 2,008                        | 7,005                                          | 2,529                  | 6,484                                          |
| 38               | 2,095                       | 6,880                                          | 2,702                  | 6,273                                          | 2,157                        | 6,818                                          | 2,826                  | 6,149                                          |
| 39               | 2,182                       | 6,756                                          | 2,876                  | 6,062                                          | 2,306                        | 6,632                                          | 3,123                  | 5,814                                          |
| 40               | 2,269                       | 6,631                                          | 3,049                  | 5,850                                          | 2,454                        | 6,445                                          | 3,421                  | 5,479                                          |
| 41               | 2,356                       | 6,507                                          | 3,223                  | 5,639                                          | 2,603                        | 6,259                                          | 3,718                  | 5,144                                          |
| 42               | 2,442                       | 6,382                                          | 3,397                  | 5,428                                          | 2,752                        | 6,073                                          | 4,016                  | 4,809                                          |
| 43               | 2,529                       | 6,258                                          | 3,570                  | 5,217                                          | 2,901                        | 5,886                                          | 4,313                  | 4,474                                          |
| 44               | 2,386                       | 6,464                                          | 3,284                  | 5,566                                          | 2,906                        | 5,944                                          | 4,324                  | 4,526                                          |
| 45               | 2,243                       | 6,671                                          | 2,997                  | 5,916                                          | 2,850                        | 6,063                                          | 4,211                  | 4,702                                          |
| 46               | 2,099                       | 6,877                                          | 2,711                  | 6,265                                          | 2,793                        | 6,183                                          | 4,099                  | 4,878                                          |
| 47               | 1,956                       | 7,083                                          | 2,424                  | 6,615                                          | 2,737                        | 6,303                                          | 3,986                  | 5,054                                          |
| 48               | 1,813                       | 7,290                                          | 2,138                  | 6,965                                          | 2,680                        | 6,422                                          | 3,873                  | 5,230                                          |
| 49               | 1,670                       | 7,496                                          | 1,851                  | 7,314                                          | 2,624                        | 6,542                                          | 3,760                  | 5,406                                          |
| 50               | 1,526                       | 7,702                                          | 1,565                  | 7,664                                          | 2,568                        | 6,661                                          | 3,647                  | 5,582                                          |
| 51               | 1,521                       | 7,712                                          | 1,554                  | 7,679                                          | 2,419                        | 6,814                                          | 3,350                  | 5,884                                          |
| 52               | 1,515                       | 7,722                                          | 1,543                  | 7,695                                          | 2,270                        | 6,968                                          | 3,052                  | 6,185                                          |
| 53               | 1,510                       | 7,732                                          | 1,532                  | 7,710                                          | 2,121                        | 7,121                                          | 2,755                  | 6,487                                          |
| 54               | 1,504                       | 7,742                                          | 1,521                  | 7,726                                          | 1,973                        | 7,274                                          | 2,457                  | 6,789                                          |
| 55               | 1,499                       | 7,752                                          | 1,510                  | 7,741                                          | 1,824                        | 7,427                                          | 2,160                  | 7,091                                          |
| 56               | 1,493                       | 7,762                                          | 1,499                  | 7,757                                          | 1,675                        | 7,580                                          | 1,862                  | 7,393                                          |
| 57               | 1,488                       | 7,772                                          | 1,488                  | 7,772                                          | 1,526                        | 7,734                                          | 1,565                  | 7,695                                          |
| 58               | 1,488                       | 7,772                                          | 1,488                  | 7,772                                          | 1,521                        | 7,739                                          | 1,554                  | 7,706                                          |

\*NEMS, Nine Equivalents of Nursing Manpower use score; HCWs, healthcare workers; ICU, intensive care unit.

# Pandemic Influenza and Excess Intensive-Care Workload

## Technical Appendix

### Models for estimating health care demands, incidence and prevalence in different scenarios and intervention strategies

In the models the following assumptions were made:

- Attack rates of 25%, 30% and 50%;
- The age specific attack and complication rates are as in a normal influenza epidemic;
- Health care including application of antibiotics will be equal to a normal influenza epidemic;
- Therapeutic use of one treatment of neuraminidase inhibitors (applied within 48 hours after onset of symptoms) gives 50% reduction in hospital admissions and mortality;
- No upper limit inhibitors shortage has been incorporated in models;
- Total high risk group per 100,000 inhabitants is based on registrations from the general practitioners databases;
- Duration of the pandemic period is based on historical data, although local and regional differences in duration can occur;
- Basic reproductive number  $R_0$  was set on 1.4

#### Formulae (adapted from Hagenaars et al (1) and Van Genugten et al (2))

TotPop = Total Population divided in age and risk groups

PopatRisk = Population at risk

HCcmr Influenza-like illness = Number of general practitioner consultations per 100,000 inhabitants

ZHObaltussen = Number of hospital admissions per 100,000 inhabitants (adapted from Baltussen(3))

Ssprenger = Mortality attributable to influenza per 100,000 inhabitants (adapted from Sprenger(4))

HCrate = General practitioners consultation rate for influenza-like illness

ZHOrate = Hospital admission rate for influenza

Srate = Mortality rate as a result from influenza

AR\_Pandemic / Normal Epidemic = Rate attack rates pandemic versus 'normal' epidemic

#### Formulae 'non-intervention scenario'

**HCrate** = HCcmr Influenza-like illness

**ZHOrate** = ZHObaltussen

**Srate** = Ssprenger

**PopatRisk** = TotPop



**Number of general practitioner consultations** = HCrate \* PopatRisk \* AR\_Pandemic / NormaleEpidemic

**Number of Hospital admission** = ZHOrate \* PopatRisk \* AR\_Pandemic / Normal Epidemic

**Mortality** = Srate \* PopatRisk \* AR\_Pandemic / NormaleEpidemic

Table 1. Input values for the model:

A) High risk proportion of the population for the three Northern provinces of the Netherlands.

| Age groups, y | Low risk proportion of the population | High risk proportion of the population* |
|---------------|---------------------------------------|-----------------------------------------|
| 0–18          | 97.6%                                 | 2.4%                                    |
| 19–64         | 93.8%                                 | 6.2%                                    |
| ≥65           | 65.0%                                 | 35.0%                                   |

\*High risk proportion of the population consists of a number of diseases identified as contributors to influenza-related excess mortality. These include pneumonia, cerebral-vascular accident, chronic heart disease and diabetes mellitus (3).

B) Age specific attack rates (2) by age group and 30% attack rate.

| Age groups, y | Attack rate, % |
|---------------|----------------|
| 0–18          | 37.4           |
| 19–64         | 28.6           |
| ≥65           | 23.1           |

C) Death rates (4) per 100,000 population by age and risk group and 30% attack rate

| Age groups, y | Low risk population | High risk population |
|---------------|---------------------|----------------------|
| 0–18          | 1.83                | 89.25                |
| 19–64         | 1.83                | 89.25                |
| ≥65           | 78.72               | 254.76               |

D) Hospitalization rates (3) per 100,000 population by age and risk group and 30% attack rate.

| Age groups, y | Low risk population | High risk population |
|---------------|---------------------|----------------------|
| 0–18          | 1.2                 | 300                  |
| 19–64         | 1.2                 | 300                  |
| ≥65           | 120                 | 555                  |

E) Absolute number of outpatient visits† (2) by 30% attack rate for the three Northern provinces in the Netherlands.

| Age groups, y | No. outpatient visits |
|---------------|-----------------------|
| 0–18          | 36,921                |
| 19–64         | 72,044                |
| ≥65           | 12,572                |
| <b>Total</b>  | <b>121,537</b>        |

†Outpatient visits were set to zero in our model. Part of the preparedness plan encompasses that outpatient visits will be covered by GPs. GPs in the region have trained and prepared for this task.

F) Avian influenza impact for the three Northern provinces in the Netherlands, 25% attack rate and pandemic period 9 weeks

| Week         | Days  | No. patients   | General practitioner consultations | Hospital admissions | Deaths     |
|--------------|-------|----------------|------------------------------------|---------------------|------------|
| 0            | 1–7   | 0              | 0                                  | 0                   | 0          |
| 1            | 8–14  | 85             | 9                                  | 0                   | 0          |
| 2            | 15–21 | 3,811          | 418                                | 0                   | 0          |
| 3            | 22–28 | 118,198        | 13,415                             | 255                 | 17         |
| 4            | 29–35 | 281,381        | 36,216                             | 800                 | 340        |
| 5            | 36–42 | 21,013         | 2,994                              | 68                  | 51         |
| 6            | 43–49 | 459            | 67                                 | 0                   | 0          |
| 7            | 50–56 | 17             | 0                                  | 0                   | 0          |
| 8            | 57–63 | 17             | 0                                  | 0                   | 0          |
| 9            | 64–70 | 0              | 0                                  | 0                   | 0          |
| <b>Total</b> |       | <b>424,981</b> | <b>53,119</b>                      | <b>1,123</b>        | <b>408</b> |

G) Avian influenza impact for the three Northern provinces in the Netherlands, 30% attack rate and pandemic period 9 weeks

| Week         | Days  | No. patients   | General practitioner consultations | Hospital admissions | Deaths     |
|--------------|-------|----------------|------------------------------------|---------------------|------------|
| 0            | 1–7   | 0              | 0                                  | 0                   | 0          |
| 1            | 8–14  | 105            | 11                                 | 0                   | 0          |
| 2            | 15–21 | 4,694          | 515                                | 11                  | 0          |
| 3            | 22–28 | 145,898        | 16,559                             | 315                 | 84         |
| 4            | 29–35 | 347,288        | 44,699                             | 977                 | 420        |
| 5            | 36–42 | 25,935         | 3,696                              | 95                  | 74         |
| 6            | 43–49 | 578            | 84                                 | 0                   | 0          |
| 7            | 50–56 | 11             | 0                                  | 0                   | 0          |
| 8            | 57–63 | 0              | 0                                  | 0                   | 0          |
| 9            | 64–70 | 0              | 0                                  | 0                   | 0          |
| <b>Total</b> |       | <b>524,507</b> | <b>65,562</b>                      | <b>1,397</b>        | <b>578</b> |

H) Avian influenza impact for the three Northern provinces in the Netherlands, 50% attack rate and pandemic period 9 weeks

| Week         | Days  | No. patients   | General practitioner consultations | Hospital admissions | Deaths     |
|--------------|-------|----------------|------------------------------------|---------------------|------------|
| 0            | 1–7   | 0              | 0                                  | 0                   | 0          |
| 1            | 8–14  | 170            | 18                                 | 0                   | 0          |
| 2            | 15–21 | 7,605          | 834                                | 17                  | 0          |
| 3            | 22–28 | 236,412        | 26,832                             | 510                 | 136        |
| 4            | 29–35 | 562,744        | 72,430                             | 1,582               | 681        |
| 5            | 36–42 | 42,025         | 5,989                              | 153                 | 119        |
| 6            | 43–49 | 936            | 136                                | 0                   | 0          |
| 7            | 50–56 | 17             | 0                                  | 0                   | 0          |
| 8            | 57–63 | 0              | 0                                  | 0                   | 0          |
| 9            | 64–70 | 0              | 0                                  | 0                   | 0          |
| <b>Total</b> |       | <b>849,909</b> | <b>106,239</b>                     | <b>2,262</b>        | <b>936</b> |

Table 2A. estimated peak hospital occupancy rate related to mean length of stay range 8 to 15 days for 25, 30 and 50% attack rates and pandemic period 9 weeks, **without** antiviral medication

| Mean length of stay, d | Attack rate, % |     |       |
|------------------------|----------------|-----|-------|
|                        | 25             | 30  | 50    |
| 8                      | 459            | 557 | 902   |
| 9                      | 493            | 590 | 955   |
| 10                     | 527            | 623 | 1,009 |
| 11                     | 561            | 656 | 1,062 |
| 12                     | 595            | 689 | 1,116 |
| 13                     | 630            | 722 | 1,169 |
| 14                     | 664            | 755 | 1,223 |
| 15                     | 666            | 758 | 1,227 |

Table 2B. Estimated peak critical care occupancy rate by **25%** critical care admission rate\*, related to mean length of stay range 8 to 15 days for 25, 30 and 50% attack rates and pandemic period 9 weeks, **without** antiviral medication

| Mean length of stay, d | Attack rate, % |     |     |
|------------------------|----------------|-----|-----|
|                        | 25             | 30  | 50  |
| 8                      | 115            | 139 | 225 |
| 9                      | 123            | 147 | 239 |
| 10                     | 132            | 156 | 252 |
| 11                     | 140            | 164 | 266 |
| 12                     | 149            | 172 | 279 |
| 13                     | 157            | 180 | 292 |
| 14                     | 166            | 189 | 306 |
| 15                     | 166            | 189 | 307 |

\*Critical care admission rate, number of persons admitted to hospital with influenza likely to require admission to a critical care unit (% based on number of extra hospital admissions) (5)

Table 2C. Estimated peak critical care occupancy rate by **50%** critical care admission rate, related to mean length of stay range 8 to 15 days for 25, 30 and 50% attack rates and pandemic period 9 weeks, **without** antiviral medication

| Mean length of stay, d | Attack rate, % |     |     |
|------------------------|----------------|-----|-----|
|                        | 25             | 30  | 50  |
| 8                      | 230            | 278 | 451 |
| 9                      | 247            | 295 | 478 |
| 10                     | 264            | 311 | 504 |
| 11                     | 281            | 328 | 531 |
| 12                     | 298            | 344 | 558 |
| 13                     | 315            | 361 | 585 |
| 14                     | 332            | 377 | 611 |
| 15                     | 333            | 379 | 614 |

Table 2D. Estimated peak hospital occupancy rate related to mean length of stay range 8 to 15 days for 25, 30 and 50% attack rates and pandemic period 14 weeks, **with** antiviral medication

| Mean length of stay, d | Attack rate, % |     |     |
|------------------------|----------------|-----|-----|
|                        | 25             | 30  | 50  |
| 8                      | 119            | 146 | 243 |
| 9                      | 128            | 154 | 257 |
| 10                     | 137            | 163 | 272 |
| 11                     | 147            | 172 | 286 |
| 12                     | 156            | 180 | 300 |
| 13                     | 165            | 189 | 315 |
| 14                     | 174            | 198 | 329 |
| 15                     | 175            | 198 | 331 |



Table 2E. Estimated peak critical care occupancy rate by **25%** critical care admission rate, related to mean length of stay range 8 to 15 days for 25, 30 and 50% attack rates and pandemic period 14 weeks, **with** antiviral medication

| Mean length of stay, d | Attack rate, % |    |    |
|------------------------|----------------|----|----|
|                        | 25             | 30 | 50 |
| 8                      | 30             | 36 | 61 |
| 9                      | 32             | 39 | 64 |
| 10                     | 34             | 41 | 68 |
| 11                     | 37             | 43 | 71 |
| 12                     | 39             | 45 | 75 |
| 13                     | 41             | 47 | 79 |
| 14                     | 44             | 49 | 82 |
| 15                     | 44             | 50 | 83 |

Table 2F. Estimated peak critical care occupancy rate by **50%** critical care admission rate, related to mean length of stay range 8 to 15 days for 25, 30 and 50% attack rates and pandemic period 14 weeks, **with** antiviral medication

| Mean length of stay, d | Attack rate, % |    |     |
|------------------------|----------------|----|-----|
|                        | 25             | 30 | 50  |
| 8                      | 59             | 73 | 121 |
| 9                      | 64             | 77 | 129 |
| 10                     | 69             | 81 | 136 |
| 11                     | 73             | 86 | 143 |
| 12                     | 78             | 90 | 150 |
| 13                     | 83             | 94 | 157 |
| 14                     | 87             | 99 | 165 |
| 15                     | 87             | 99 | 165 |

All models are based on 0.3% hospital admission rate for infected patients. Changing this rate will have a significant impact on the peak demand for hospital beds and ICU beds. The maximum number of regular hospital beds in the 15 hospitals in the three Northern provinces of the Netherlands equals 5,629 of which 3,940 could be washed out for influenza related hospital admissions (30% of all admissions is acute, non-influenza related care). The maximum number of intensive care beds which could be washed out for influenza related care equals 136.

Table 3A1. Hospital bed peak demand for different hospital admissions rates **without** antiviral medication (at day 28 after onset of the pandemic) (pandemic period 9 weeks)

| Hospital admission rate, % | Attack rate, %         |       |       |       |       |       |
|----------------------------|------------------------|-------|-------|-------|-------|-------|
|                            | 25                     |       | 30    |       | 50    |       |
|                            | Mean length of stay, d |       |       |       |       |       |
|                            | 8                      | 15    | 8     | 15    | 8     | 15    |
| 0.1                        | 152                    | 206   | 186   | 252   | 301   | 409   |
| 0.2                        | 304                    | 412   | 371   | 505   | 601   | 818   |
| 0.3                        | 459                    | 666   | 557   | 758   | 902   | 1,227 |
| 0.4                        | 608                    | 824   | 742   | 1,009 | 1,203 | 1,635 |
| 0.5                        | 760                    | 1,030 | 928   | 1,261 | 1,503 | 2,044 |
| 0.6                        | 912                    | 1,236 | 1,113 | 1,514 | 1,804 | 2,453 |
| 0.7                        | 1,064                  | 1,441 | 1,299 | 1,766 | 2,105 | 2,861 |
| 0.8                        | 1,216                  | 1,647 | 1,484 | 2,018 | 2,405 | 3,270 |
| 0.9                        | 1,367                  | 1,853 | 1,670 | 2,270 | 2,706 | 3,679 |
| 1.0                        | 1,519                  | 2,059 | 1,855 | 2,523 | 3,006 | 4,088 |

Table 3A2. Hospital bed peak demand for different hospital admissions rates **with** antiviral medication (at day 43 after onset of the pandemic) (pandemic period 14 weeks).

| Hospital admission rate, % | Attack rate, %         |     |     |     |     |       |
|----------------------------|------------------------|-----|-----|-----|-----|-------|
|                            | 25                     |     | 30  |     | 50  |       |
|                            | Mean length of stay, d |     |     |     |     |       |
|                            | 8                      | 15  | 8   | 15  | 8   | 15    |
| 0.1                        | 41                     | 56  | 49  | 66  | 81  | 111   |
| 0.2                        | 83                     | 112 | 98  | 133 | 163 | 221   |
| 0.3                        | 119                    | 175 | 146 | 198 | 243 | 331   |
| 0.4                        | 166                    | 225 | 195 | 266 | 326 | 443   |
| 0.5                        | 207                    | 281 | 244 | 332 | 407 | 553   |
| 0.6                        | 249                    | 337 | 293 | 398 | 488 | 664   |
| 0.7                        | 290                    | 393 | 342 | 465 | 570 | 775   |
| 0.8                        | 332                    | 449 | 391 | 531 | 651 | 885   |
| 0.9                        | 373                    | 505 | 439 | 598 | 732 | 996   |
| 1.0                        | 414                    | 562 | 488 | 664 | 814 | 1,107 |

In the next tables we present the **difference** (i.e. surplus or deficit) between demand and capacity for ICU beds at the peak of the pandemic for a mean length of stay of 8 and 15 days with a maximum of 136 available ICU beds for different hospital admission rates and 30% attack rate.

Table 3B1. ICU bed difference **without** antiviral medication (pandemic period 9 weeks).

| Hospital admission rate, % | ICU admission, %       |      |      |        |        |        |
|----------------------------|------------------------|------|------|--------|--------|--------|
|                            | 25                     |      | 50   |        | 75     |        |
|                            | Mean length of stay, d |      |      |        |        |        |
|                            | 8                      | 15   | 8    | 15     | 8      | 15     |
| 0.1                        | 90                     | 73   | 43   | 10     | −4     | −53    |
| 0.2                        | 43                     | 10   | −50  | −117   | −142   | −243   |
| 0.3                        | −3                     | −54  | −143 | −243   | −282   | −433   |
| 0.4                        | −50                    | −116 | −235 | −369   | −421   | −621   |
| 0.5                        | −96                    | −179 | −328 | −495   | −560   | −810   |
| 0.6                        | −142                   | −243 | −421 | −621   | −699   | −1,000 |
| 0.7                        | −189                   | −306 | −514 | −747   | −838   | −1,189 |
| 0.8                        | −235                   | −369 | −606 | −873   | −977   | −1,378 |
| 0.9                        | −282                   | −432 | −699 | −999   | −1,117 | −1,567 |
| 1.0                        | −328                   | −495 | −792 | −1,126 | −1,255 | −1,756 |

Table 3B2. ICU bed difference **with** antiviral medication (pandemic period 14 weeks).

| Hospital admission rate, % | ICU admission, %       |     |      |      |      |      |
|----------------------------|------------------------|-----|------|------|------|------|
|                            | 25                     |     | 50   |      | 75   |      |
|                            | Mean length of stay, d |     |      |      |      |      |
|                            | 8                      | 15  | 8    | 15   | 8    | 15   |
| 0.1                        | 124                    | 120 | 112  | 103  | 99   | 87   |
| 0.2                        | 112                    | 103 | 87   | 70   | 63   | 36   |
| 0.3                        | 100                    | 87  | 63   | 37   | 27   | −13  |
| 0.4                        | 87                     | 70  | 39   | 3    | −10  | −64  |
| 0.5                        | 75                     | 53  | 14   | −30  | −47  | −113 |
| 0.6                        | 63                     | 37  | −11  | −63  | −84  | −163 |
| 0.7                        | 51                     | 20  | −35  | −97  | −121 | −213 |
| 0.8                        | 38                     | 3   | −60  | −130 | −157 | −262 |
| 0.9                        | 26                     | −14 | −84  | −163 | −193 | −313 |
| 1.0                        | 14                     | −30 | −108 | −196 | −230 | −362 |

For example: with 0.3% hospital admission rate, 50% ICU admission rate and a mean length of stay of 8 days and no intervention with antiviral medication (table 3B1), a shortage of 143 ICU beds will occur at the peak of the pandemic. Dividing these 143 beds over 15 hospitals will leave every hospital with a shortage around 10 ICU beds. For a short period of time this shortage can be bridged by utilizing any form of respiratory support available in the hospitals (operating room ventilators, medical specialist and nurses, medical students etc.)



## References

1. Hagenaars TJ, Van Genugten MLL, Wallinga J. Scenario analysis of transmission dynamics, health-care demand and mortality. Brief report to the Health Inspectorate of the Netherlands. 2003.
2. Van Genugten MLL, Heijnen MLA, Jager JC. Scenario ontwikkeling zorgvraag bij een influenzapandemie. RIVM rapport 217617 004. 2001.
3. Baltussen RM, Reinders A, Sprenger MJW, Postma MJ, Jager JC, Ament AJHA, et al. Estimating influenza-related hospitalization in the Netherlands. *Epidemiol Infect.* 1998;121:129–38.
4. Sprenger MJ, Mulder PG, Beyer WE, van Strik R, Masurel N. Impact of influenza on mortality in relation to age and underlying disease, 1967-1989. *Int J Epidemiol.* 1993;22:334–40.
5. Anderson TA, Hart GK, Kainer MA. Pandemic influenza-implications for critical care resources in Australia and New Zealand. *J Crit Care.* 2003;18:173–80.