



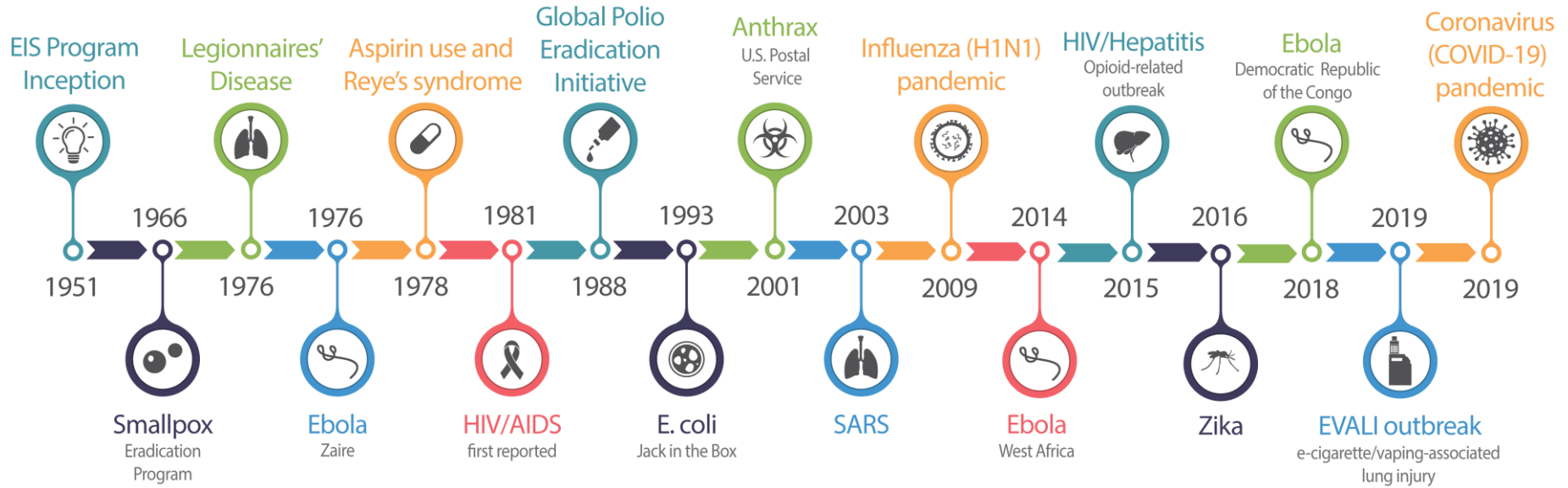
U.S. Department of  
Health and Human Services  
Centers for Disease  
Control and Prevention

# EPIDEMIC INTELLIGENCE SERVICE

---

**CDC's Disease Detective Training Program**

# WE WERE THERE

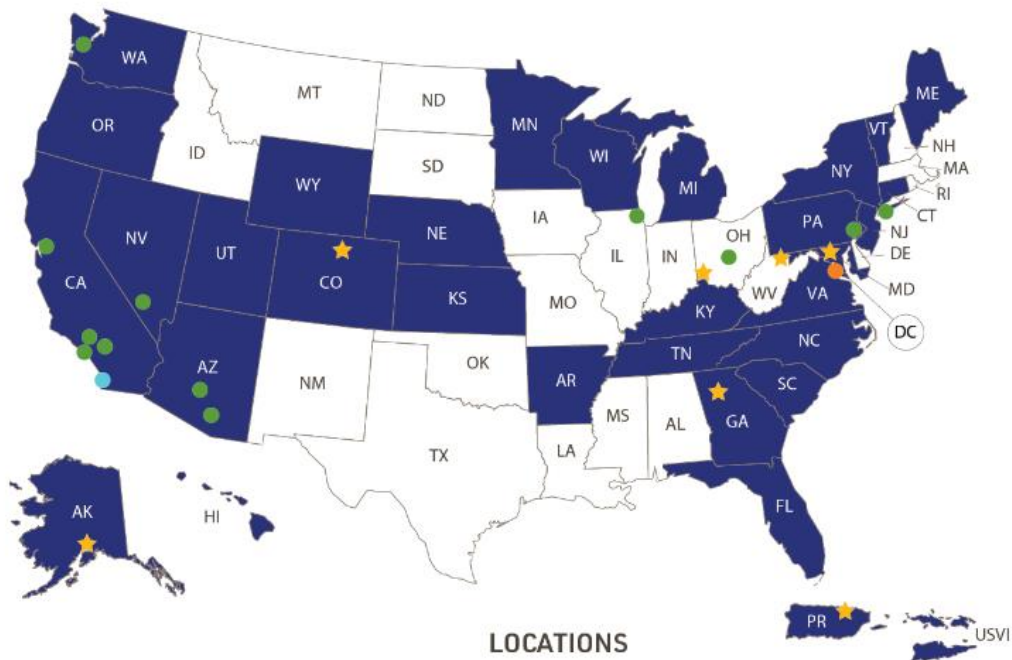


A photograph of two healthcare workers, a man and a woman, sitting at a desk in a control room. They are looking at a large computer monitor that displays a software interface with a grid of patient information. The man is wearing a blue scrub top and glasses, and the woman is wearing a light-colored scrub top. They are both wearing lanyards. The desk has a keyboard, a mouse, and a large bottle of water. A window in the background shows a white ambulance and other vehicles parked outside. The text "ON THE FRONT LINES" is overlaid in the center of the image.

**ON THE FRONT LINES**

# 2022 & 2023 EIS CLASSES

86 in class of 2022 | 86 in class of 2023



**2022 and 2023 EIS classes (172 officers)**  
86 in class of 2022 | 86 in class of 2023

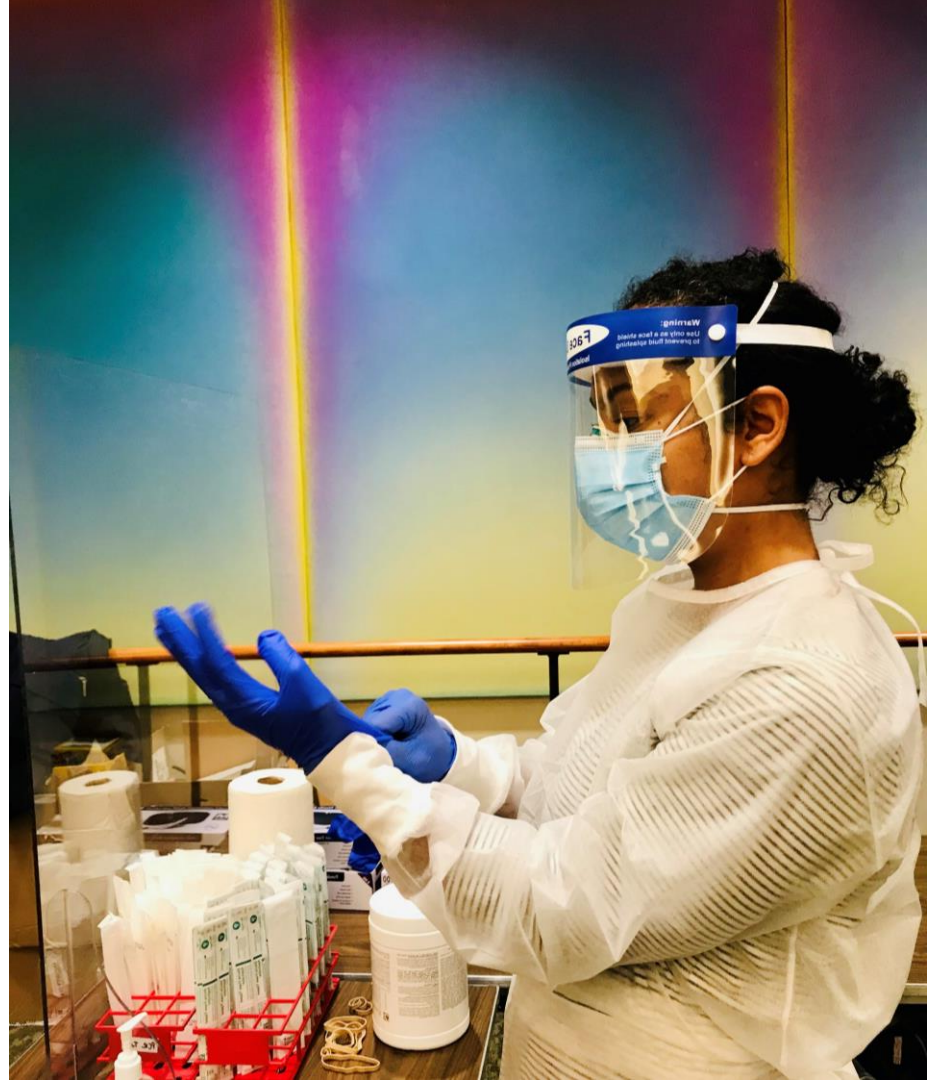
Effective July 2023

- LOCATIONS**
- State or territorial health departments (38 officers)
  - City, county, tribal, and other partners (19 officers)
  - CDC headquarters and campuses (113 officers)
  - Combined local and federal positions (1 officer)
  - Other federal agency (1 officer)



**EIS  
OFFICERS  
ARE...**

**WHY  
EIS?**






**THERE'S  
NOTHING  
LIKE IT**

Add  
Your  
Photo  
Here

Add your name and  
EIS story here





**WHERE  
COULD  
EIS  
TAKE  
YOU?**



**900+**

**peer-reviewed scientific publications  
authored by EIS officers from classes of 2015-2020**



**97%**

**of recent EIS graduates continue  
in public health-related positions**



**4 of the last 12  
CDC Directors are EIS alumni**

# 24

CDC Country & Regional Office Directors **are EIS alumni**

11 in  
AFRICA



8 in  
ASIA



2 in  
EUROPE



2 in  
NORTH  
AMERICA



1 in  
SOUTH  
AMERICA





**Ready to make  
a difference?**

# HOW TO APPLY

[cdc.gov/eis](https://cdc.gov/eis)

## SPRING 2024

### Epidemic Intelligence Service

CDC > EIS

- 🏠 EIS
- What EIS Officers Do +
- Applying to EIS -**
  - Check Eligibility
  - Review Salary/Benefits
  - Informational Webinars
  - Prepare Application Info
  - Complete Online Application
- Applying to Host an Officer +
- Requesting EIS Services +
- Attending EIS Conference +
- Who We Are +
- Media and Publications +
- About Our Program +
- Promotion and Recruitment Tools

The host site application period is now open through **January 26, 2024**.  
For questions about the EIS program, please contact us.

## Applying to EIS

[Print](#)

### Steps to Apply to Epidemic Intelligence Service

- ▶ **Applying to EIS**
  - 1. Check Eligibility
  - 2. Review Salary and Benefits Information
  - 3. Informational Webinars for Fellowship Applicants
  - 4. Prepare Application Information and Materials
  - 5. Complete Online Application

To join EIS, you must be willing to commit to this 2-year, full-time fellowship (beginning in July) and relocate to your assignment. Follow these five steps to apply to EIS.

✉ For EIS application questions, contact us at [eisapplication@cdc.gov](mailto:eisapplication@cdc.gov).

### Class of 2025 Deadlines & Decision Dates

\*Dates are subject to change\*

<b>March 1, 2024</b>	Application period opens at 9:00 a.m. (ET).
<b>April 23-26, 2024</b>	Interested candidates are invited to attend the <a href="#">EIS conference</a> in-person in Atlanta (at own expense) or via event livestream. Event registration is free.
<b>June 5, 2024</b>	Application period closes at 5:00 p.m. (ET). All applications and supporting materials must be received by the deadline. Late applications will not be considered.



[EIS Recruitment Flyer](#)

# LEARN MORE

[cdc.gov/eis](https://cdc.gov/eis)  
[cdc.gov/fellowships](https://cdc.gov/fellowships)

