



Tiffany J. Brown, JD MPH

Deputy Chief of Staff

Spelman College, BS Biochemistry; MPH University of Alabama at Birmingham, and JD University of Maryland Francis King Carey School of Law

"If you see something that is not right, not fair, not just, you have a moral obligation to do something about it." ~ Congressman John Lewis

Tiffany J. Brown, JD MPH

Deputy Chief of Staff

Spelman College, BS Biochemistry; MPH University of Alabama at Birmingham, and JD University of Maryland Francis King Carey School of Law



Special Recognition Award from the FDA Commissioner for leading a team during the global marketing suspension of an approved drug at FDA's Center for Drug Evaluation and Research



Post-undergraduate research at the University of Alabama at Birmingham School of Medicine, Neurobiology program where I conducted research related to malignant glioblastomas (brain tumors)



ORISE fellowship to work at the US Food and Drug Administration (FDA) to monitor adverse events related to Gene Therapy Clinical Trial



NIH/Coca Cola Summer Scholar at Brown University School of Medicine to study smoking cessation programs



Associate Director for Policy for the Office of Safety, Security and Asset Management during the onset of the COVID-19 pandemic



Deputy Chief of Staff to the CDC Director during the beginning of a new Administration and on-going global pandemic



Graduating from the University of Maryland Law School with a certificate in health law which allowed me to serve as a Senior Regulatory Counsel at FDA's Center for Biologics Evaluation and Research





Leonard Jack, Jr, PhD, MSc

Editor in Chief, Preventing Chronic Disease:
Public Health Research, Practice, and Policy Journal

Virginia State University

Leonard Jack, Jr, PhD, MSc

Editor in Chief, Preventing Chronic Disease:
Public Health Research, Practice, and Policy Journal

Virginia State University



Exposure to phenomenal mentoring and support systems from high school, undergraduate, graduate, and professional career.



Seeking opportunity to generate peer reviewed papers that would help me to shape future directions in public health research and practice



Taking advantage of opportunity to share ideal/ thinking about research and evaluation efforts no matter how develop they were. School of Public Health.



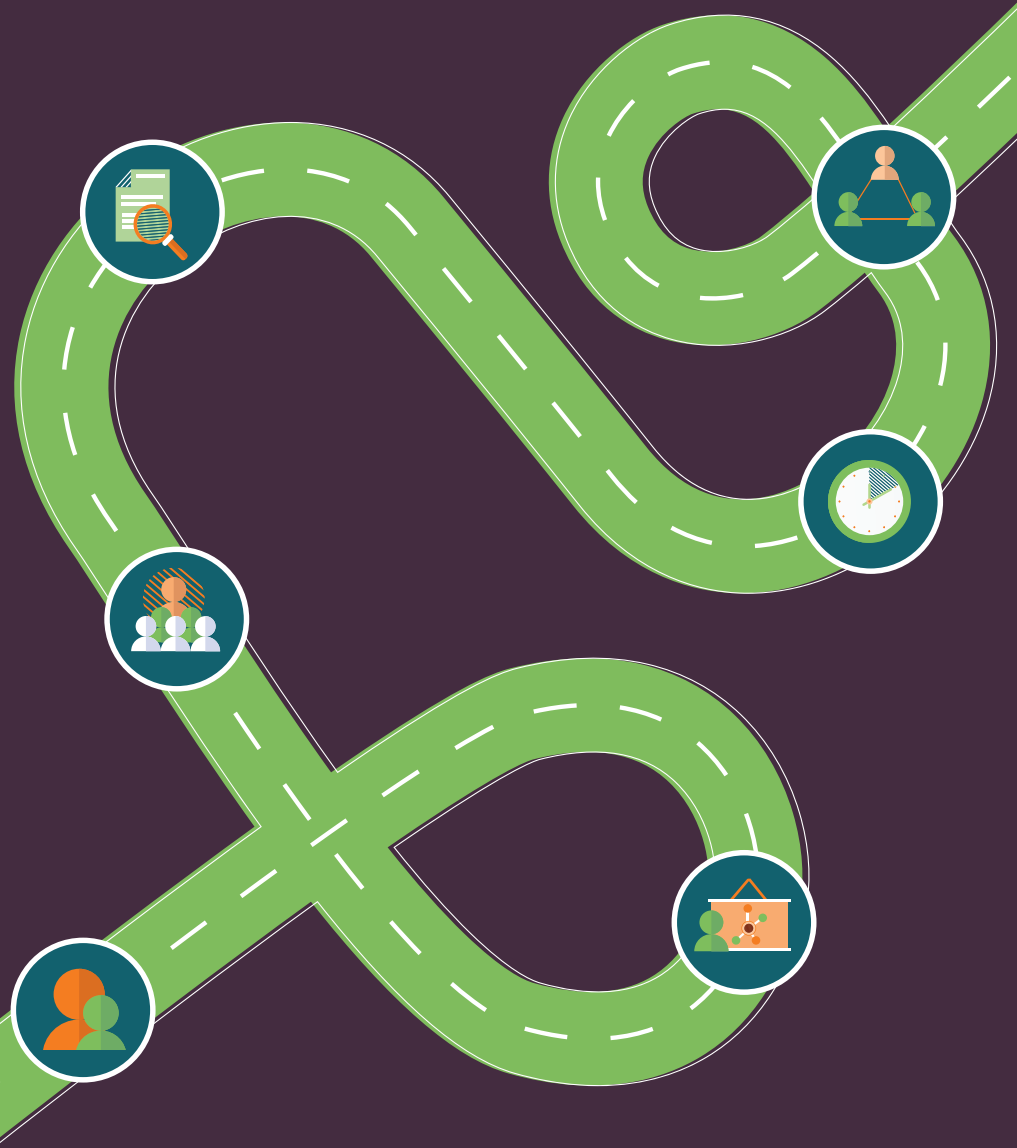
Learning how to take necessary breaks to recharge and refocus. It is ok to say 'no'.



Accepting opportunity to lead discussion and provide presentations in front of audience familiar and unfamiliar in order to develop communication skills and the ability to community complex public health information to diverse audience.



Celebrate the contribution of others and seek ways to work collaboratively with other (especially those that don't think the same as I do).





**Donna Hubbard McCree,
PhD, MPH, RPh**

Associate Director for Health Equity, National Center for
HIV, Viral Hepatitis, STD, and TB Prevention (NCHHSTP)

Howard University

Donna Hubbard McCree, PhD, MPH, RPh

Associate Director for Health Equity, National Center for HIV, Viral Hepatitis, STD, and TB Prevention (NCHHSTP)

Howard University



Practiced pharmacy during a time when the first cases of what became known as HIV were identified.



Led an intervention research team of 22 scientists, postdoctoral fellows, EIS officers, and contractors.



Completed MPH (1987) and PhD (1997) degrees at The Johns Hopkins University School of Public Health.



Served as lead and mentor for the CDC Division of HIV Prevention, HIV Prevention in Communities of Color Postdoctoral Fellowship Program.



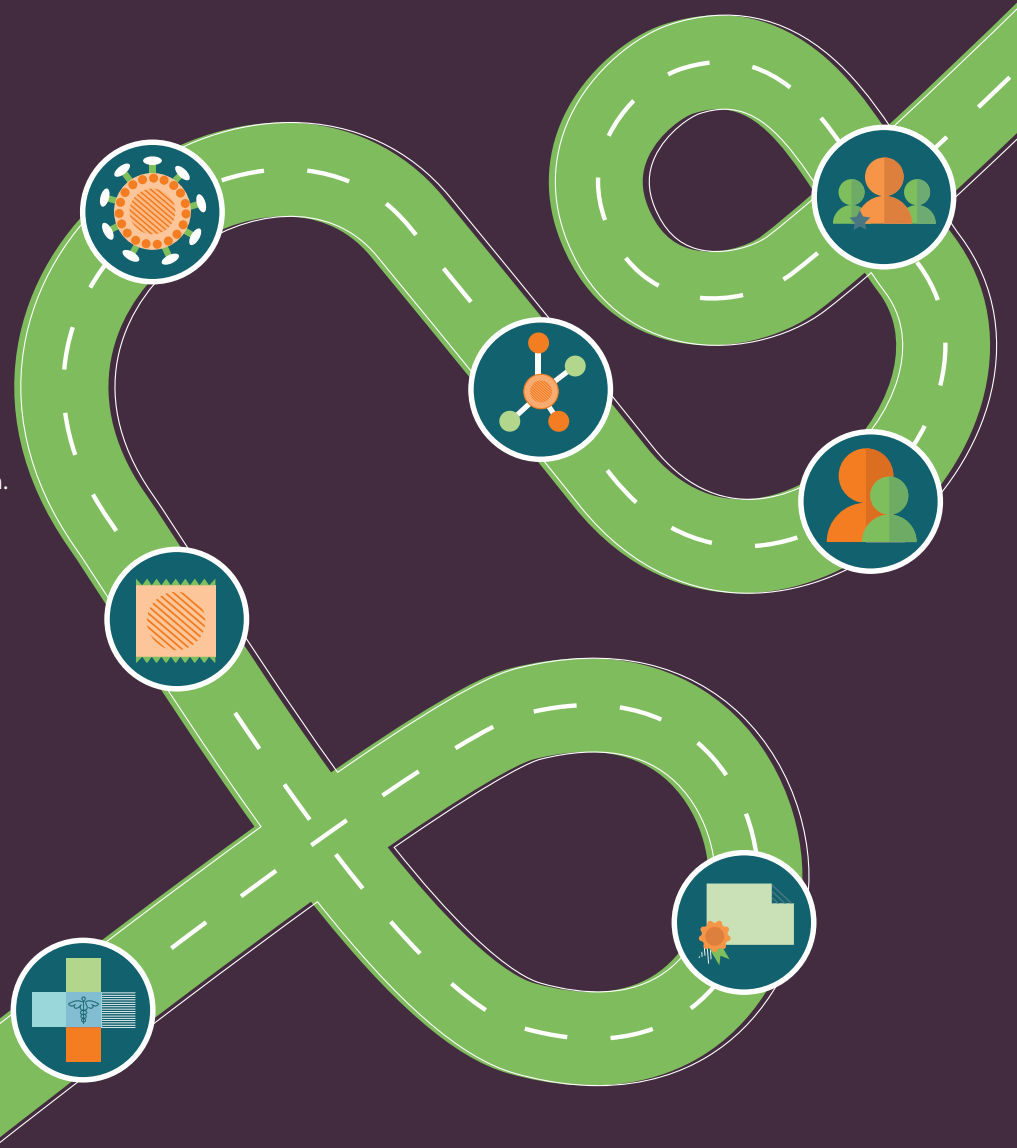
Completed an ATPM (former) postdoctoral fellowship in preventive medicine / STD prevention at Emory University School of Public Health.



Served as the inaugural CDC Division of HIV Prevention Associate Director for Health Equity (10 years) and then successfully competed for the NCHHSTP Associate Director for Health Equity position.



Served as project director for an HIV behavioral intervention trial for women with HIV at the Grady Ponce Infectious Disease Clinic.





Celeste Philip, MD, MPH

Deputy Director for Non-Infectious Diseases

Howard University

Celeste Philip, MD, MPH

Deputy Director for Non-Infectious Diseases
Howard University



Worked at HU Hospital and NIH during college



Participated in applied public health experiences during college, med school, and residency



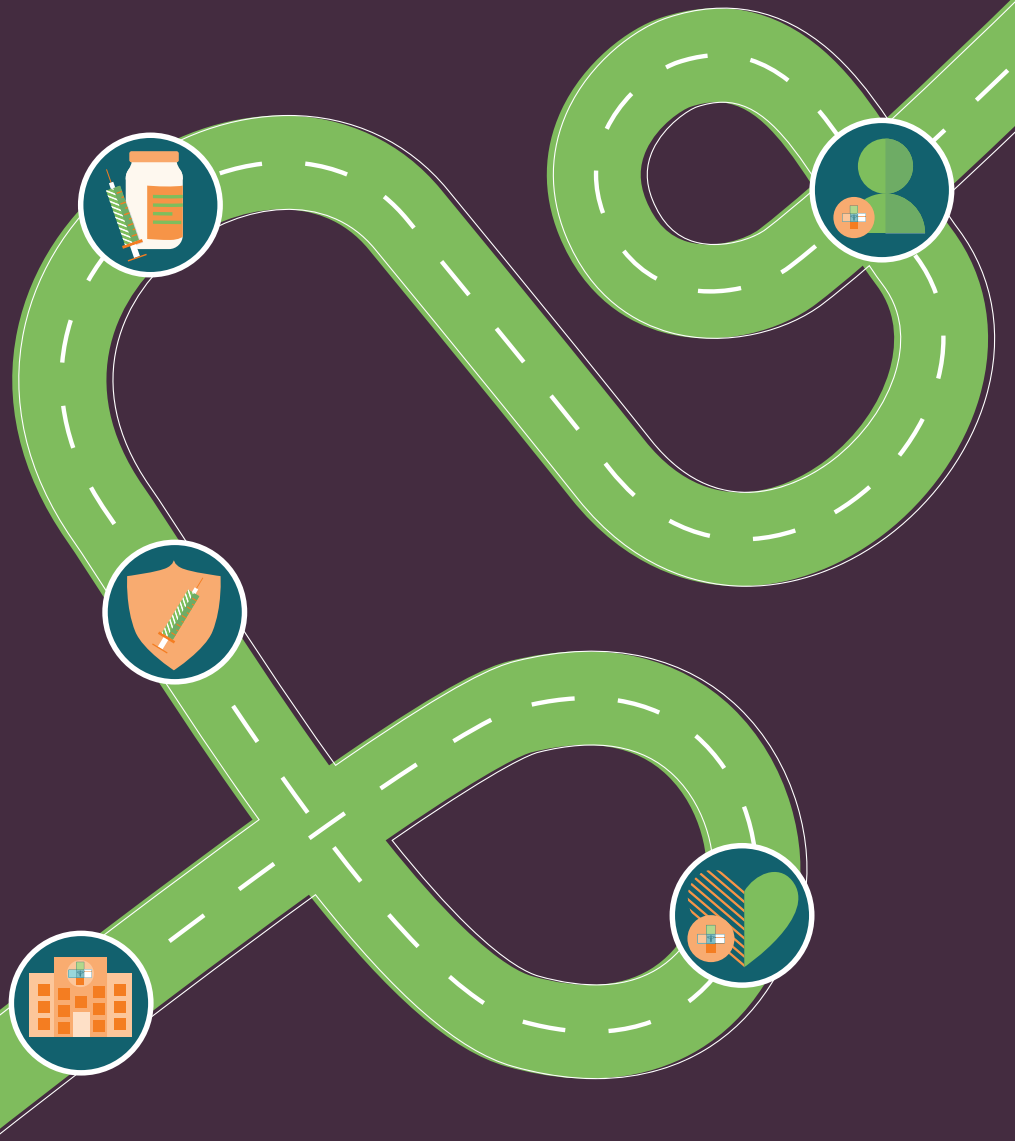
Trained at CDC – EIS and preventive medicine residency



Spent 10 years at Florida Dept of Health – being promoted to several roles, finally serving as state health officer



Joined CDC as a deputy director





Mike Underwood, PhD

Chief, School-based Surveillance Branch

Tuskegee University, BS, Biology, 2004

"Healthcare is a right, not a privilege."

Mike Underwood, PhD

Chief, School-based Surveillance Branch

Tuskegee University, BS, Biology, 2004



Studied biology, medical research, and bioethics at Tuskegee University. Support from dedicated mentors and professors helped lay the groundwork for a career in science.



Helped develop a national cancer registry in South Africa, and collaborated with WHO to monitor disease burden in Latin America and the Caribbean.



Introduced to public health (including epidemiology, surveillance, and evaluation) as a graduate student in the University of Minnesota's School of Medicine.



Led a team of multidisciplinary researchers to track vaccination coverage among school children and Pacific Island jurisdictions for CDC's Immunization Services Division.



Began CDC career as an Epidemic Intelligence Service (EIS) Officer assigned to the Division of Cancer Prevention and Control.



Direct CDC surveillance programs (YRBS, Profiles, ABES) to monitor trends in adolescent health behaviors and school health policy in the Division of Adolescent and School Health.

